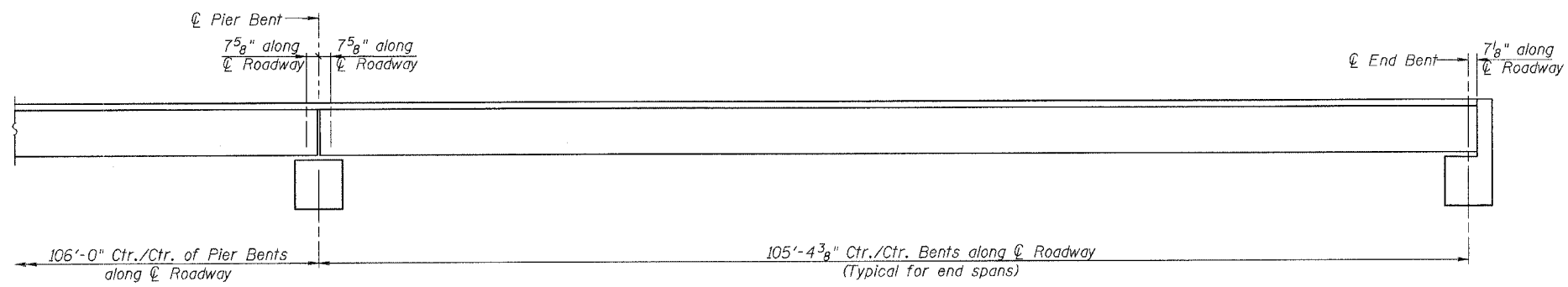
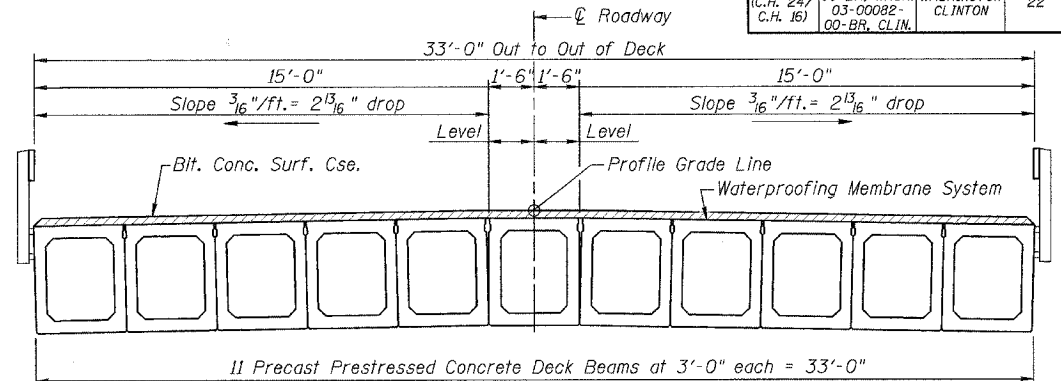


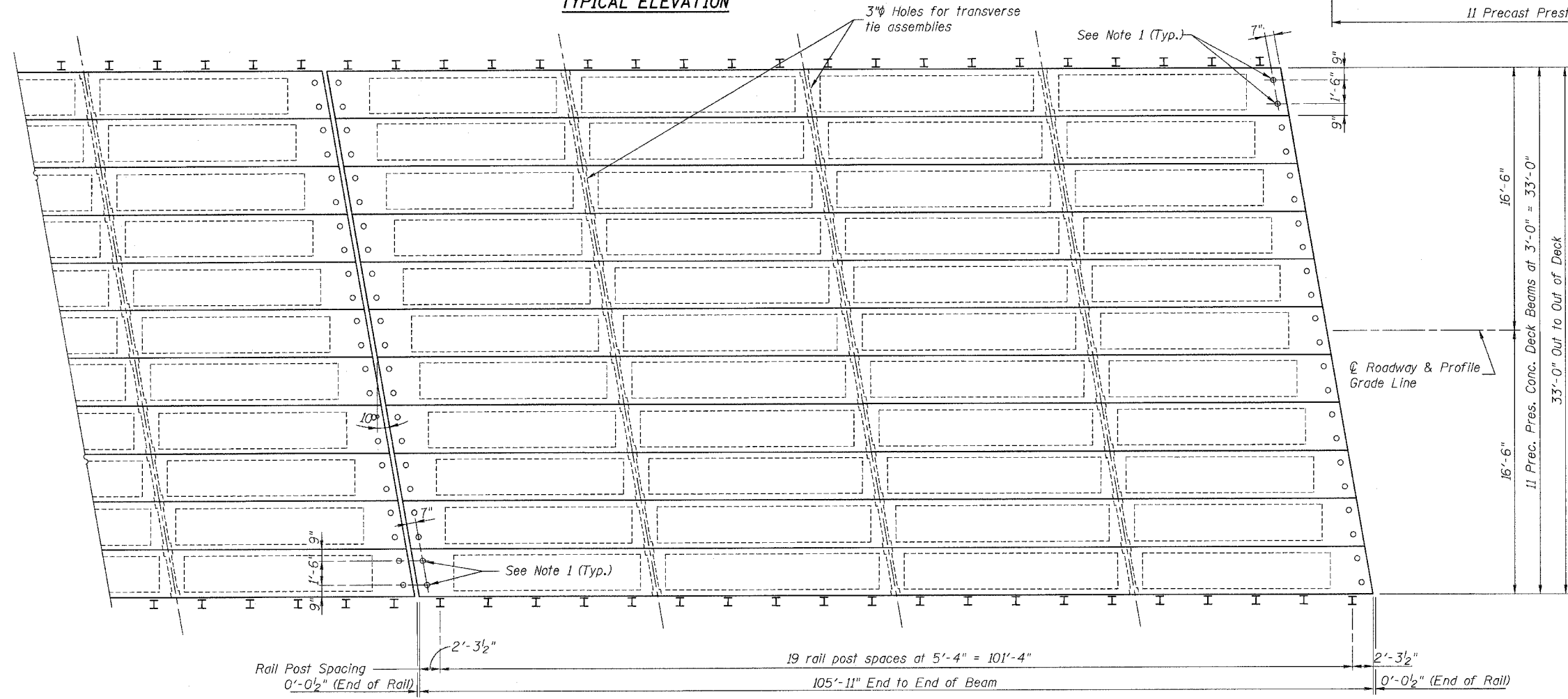
ROUTE NO.	SECTION	COUNTY	TOTAL SHEETS	SHEET NO.
FAS 788 (C.H. 24/C.H. 16)	03-00075-00-BR, WASH. 03-00082-00-BR, CLIN.	WASHINGTON CLINTON	22	13



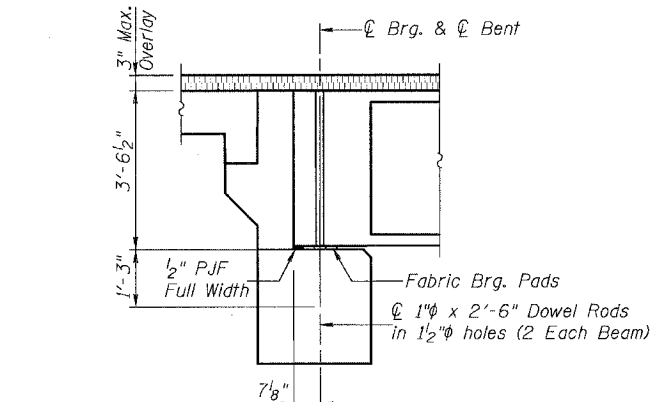
TYPICAL ELEVATION



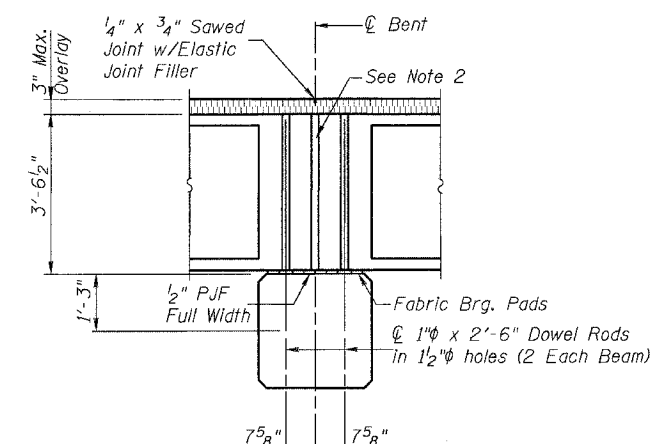
CROSS SECTION



PLAN



SECTION AT ABUTS. (Along Roadway)



SECTION AT PIERS (Along Roadway)

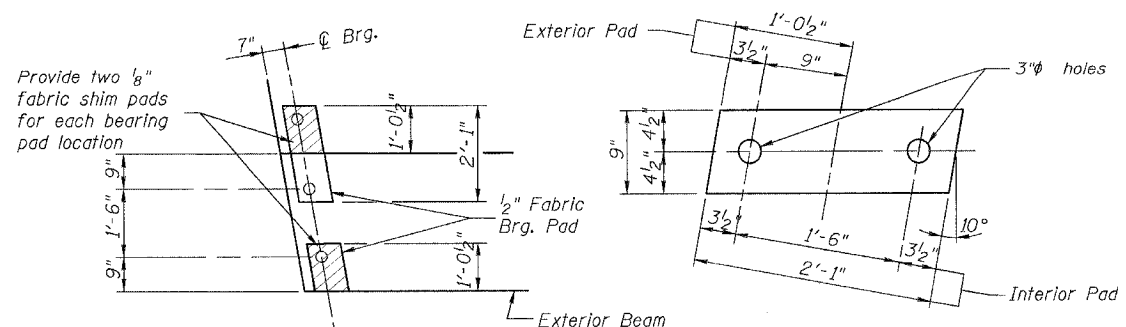
BILL OF MATERIAL-ONE SPAN

P.P. Conc. Dk. Bm. 42" Dp.	3,498 sq. ft.
Blt. Conc. Surf. Cse. Super "C" N50	54.2 tons
Waterproofing Membrane System	389 sq. yds.
Portland Cement Mortar Fairing Cse.	1,060 lin. ft.

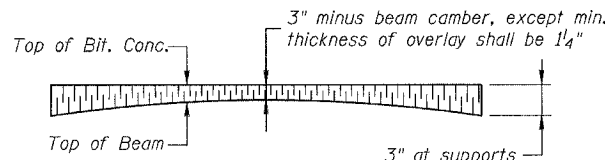
NOTES

- After beams have been erected, holes shall be drilled into substructure and anchor dowels placed. Dowel holes shall be filled with non-shrink grout to top of beam and allowed to cure min. 24 hrs. prior to grouting the shear key.
- Nominal 1" joint at Pier shall be filled with non-shrink grout.
- Longitudinal keys shall be grouted.
- All transverse tie assemblies (nuts, bolts, washers) shall be hot dipped galvanized in accordance with A.S.T.M. A-153.
- The 1" rods in the transverse tie assembly shall be tightened to a snug fit and the threads set. Pockets that receive transverse tie bars outside shall be filled with grout after transverse tie assembly is in place.

DESIGNED:	L.D.G.
CHECKED:	B.G.H.
DRAWN:	K.H.L.
CHECKED:	L.D.G.



1/2" FABRIC BRG. PAD DETAILS



PROFILE OF OVERLAY

SUPERSTRUCTURE DETAILS
F.A.S. 788 (C.H. 24/C.H. 16)
OVER CROOKED CREEK
SECTION 03-00075-00-BR
WASHINGTON COUNTY
SECTION 03-00082-00-BR
CLINTON COUNTY

13551R5213.DGN FEB. 21, 2006