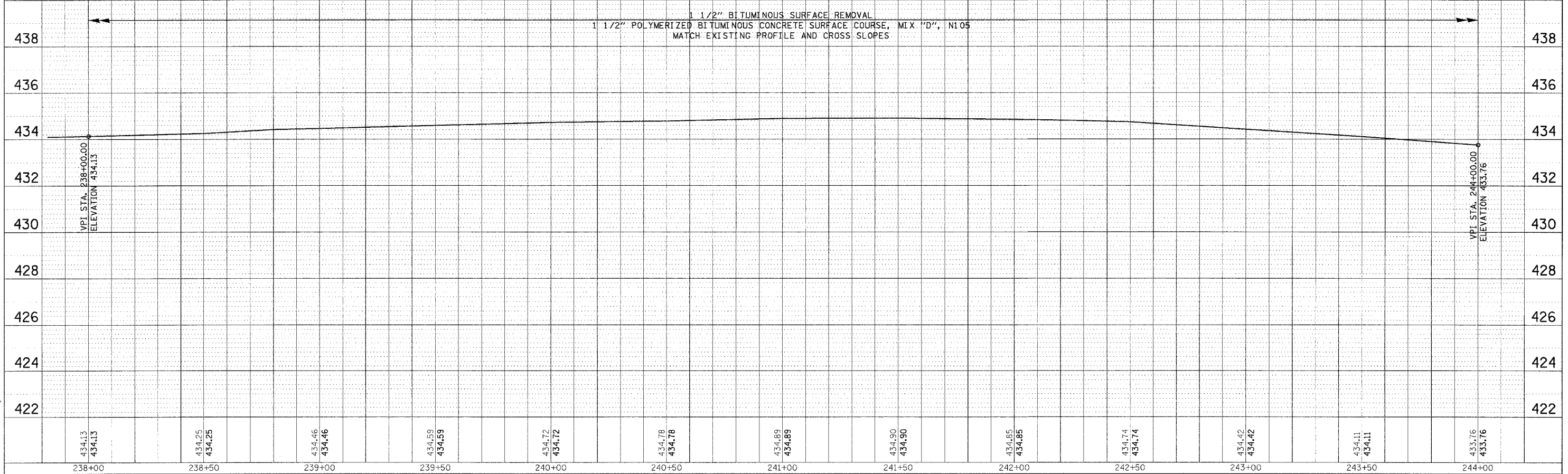
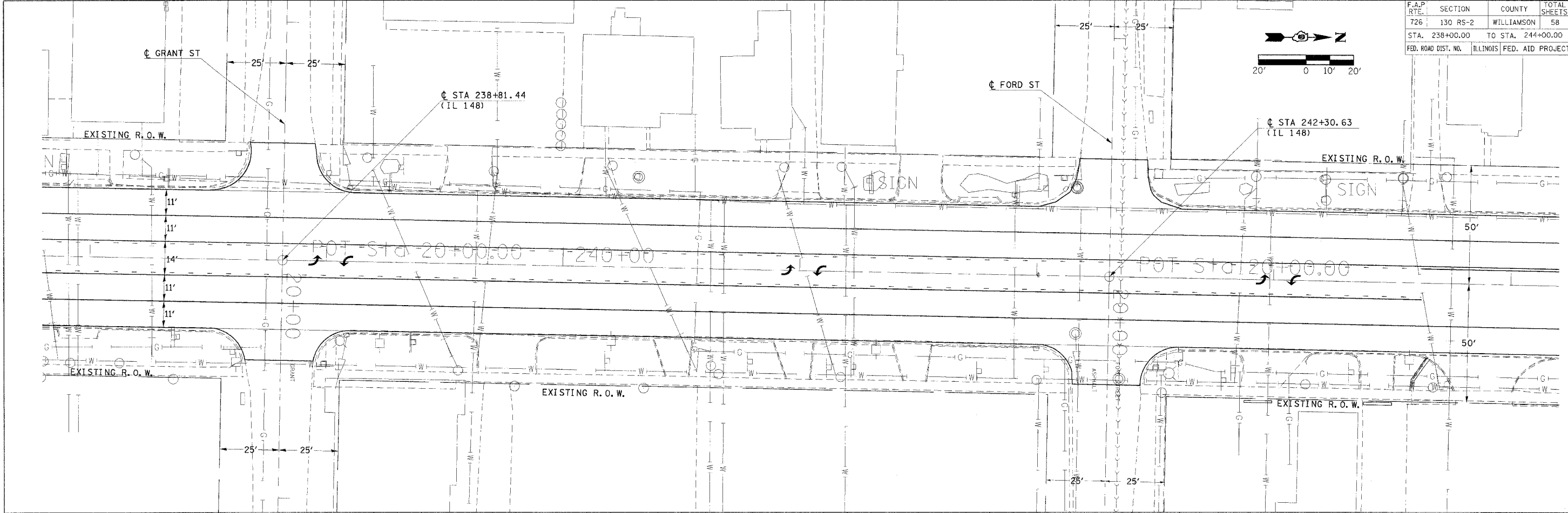
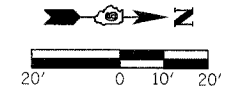


F.A.P. RTE.	SECTION	COUNTY	TOTAL SHEETS	SHEET NO.
726	130 RS-2	WILLIAMSON	58	10
STA. 238+00.00		TO STA. 244+00.00		
FED. ROAD DIST. NO.	ILLINOIS	FED. AID PROJECT		



1 1/2" BITUMINOUS SURFACE REMOVAL
 1 1/2" POLYMERIZED BITUMINOUS CONCRETE SURFACE COURSE, MIX "D", N105
 MATCH EXISTING PROFILE AND CROSS SLOPES

PLAN	DATE
BY	
DATE	
BY	
DATE	
BY	
DATE	

PROFILE	DATE
BY	
DATE	
BY	
DATE	
BY	
DATE	

PLOT DATE = 2/16/2006
 FILE NAME = c:\proje\sta\98912\98912.dwg
 PLOT SCALE = 20.0000' / 1" / IN.
 USER NAME = carlsonj

PLAN/PROFILE DRAINAGE IL 148 STA 238+00 TO STA 244+00