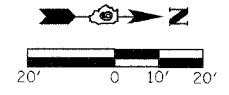
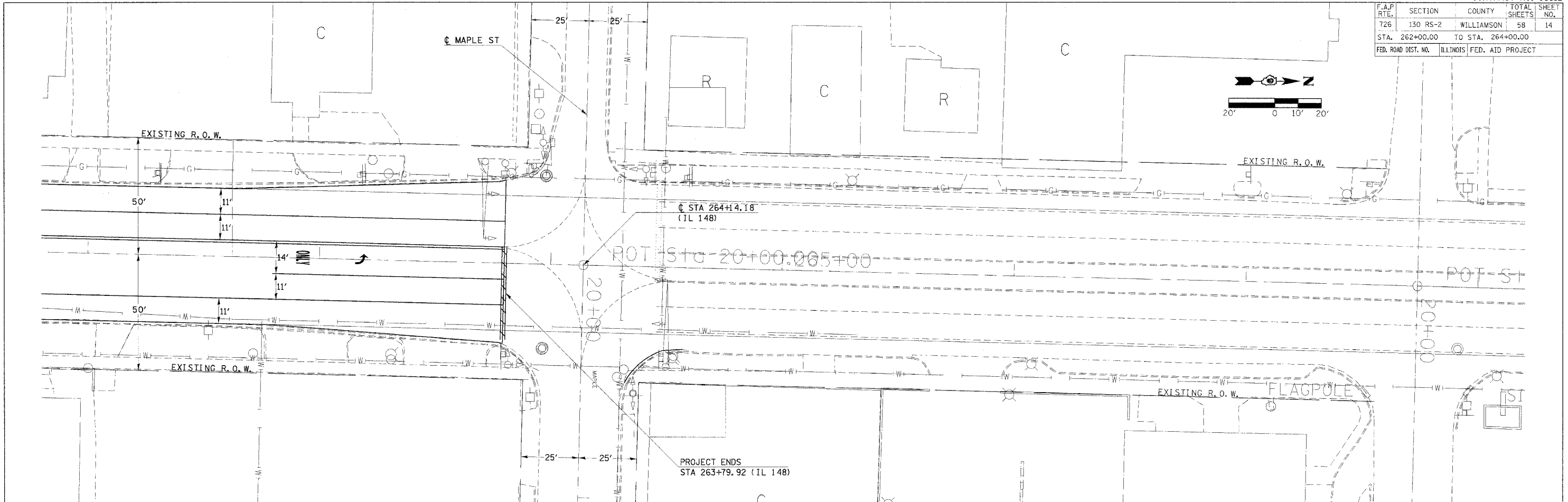


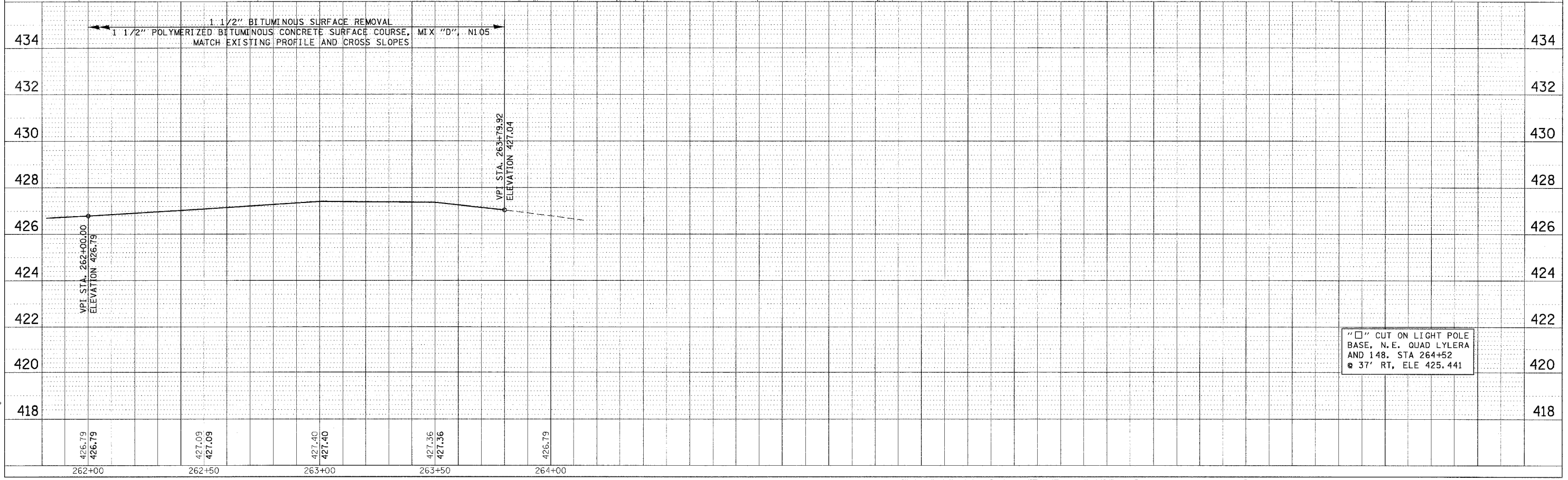
F.A.P. RTE.	SECTION	COUNTY	TOTAL SHEETS	SHEET NO.
726	130 RS-2	WILLIAMSON	58	14
STA. 262+00.00		TO STA. 264+00.00		
FED. ROAD DIST. NO.		ILLINOIS FED. AID PROJECT		



PLAN	SURVEYED	DATE
	PLOTTED	
	NOTED	
	BY	
	NO. OF BOOK	
	NO. OF SHEETS	
	NO. OF PAGES	
	NO. OF FIGS.	
	NO. OF VIEWS	
	NO. OF PLANS	
	NO. OF SECTIONS	
	NO. OF DETAILS	
	NO. OF ENDS	
	NO. OF CUTS	
	NO. OF ELEVATIONS	
	NO. OF DISTANCES	
	NO. OF ANGLES	
	NO. OF BEARINGS	
	NO. OF CURVES	
	NO. OF SLOPES	
	NO. OF GRADES	
	NO. OF PROFILES	
	NO. OF SECTIONS	
	NO. OF DETAILS	
	NO. OF ENDS	
	NO. OF CUTS	
	NO. OF ELEVATIONS	
	NO. OF DISTANCES	
	NO. OF ANGLES	
	NO. OF BEARINGS	
	NO. OF CURVES	
	NO. OF SLOPES	
	NO. OF GRADES	
	NO. OF PROFILES	



PROFILE	SURVEYED	DATE
	PLOTTED	
	NOTED	
	BY	
	NO. OF BOOK	
	NO. OF SHEETS	
	NO. OF PAGES	
	NO. OF FIGS.	
	NO. OF VIEWS	
	NO. OF PLANS	
	NO. OF SECTIONS	
	NO. OF DETAILS	
	NO. OF ENDS	
	NO. OF CUTS	
	NO. OF ELEVATIONS	
	NO. OF DISTANCES	
	NO. OF ANGLES	
	NO. OF BEARINGS	
	NO. OF CURVES	
	NO. OF SLOPES	
	NO. OF GRADES	
	NO. OF PROFILES	



"□" CUT ON LIGHT POLE
BASE, N.E. QUAD LYLER
AND 148, STA 264+52
@ 37' RT, ELE 425.441

DATE = 2/16/2006
FILE NAME = c:\proj\sect\98912\98912.dwg
PLOT SCALE = 28.8/1000 / IN.
USER NAME = cam1000j

PLAN/PROFILE DRAINAGE IL 148 STA 262+00 TO STA 264+00