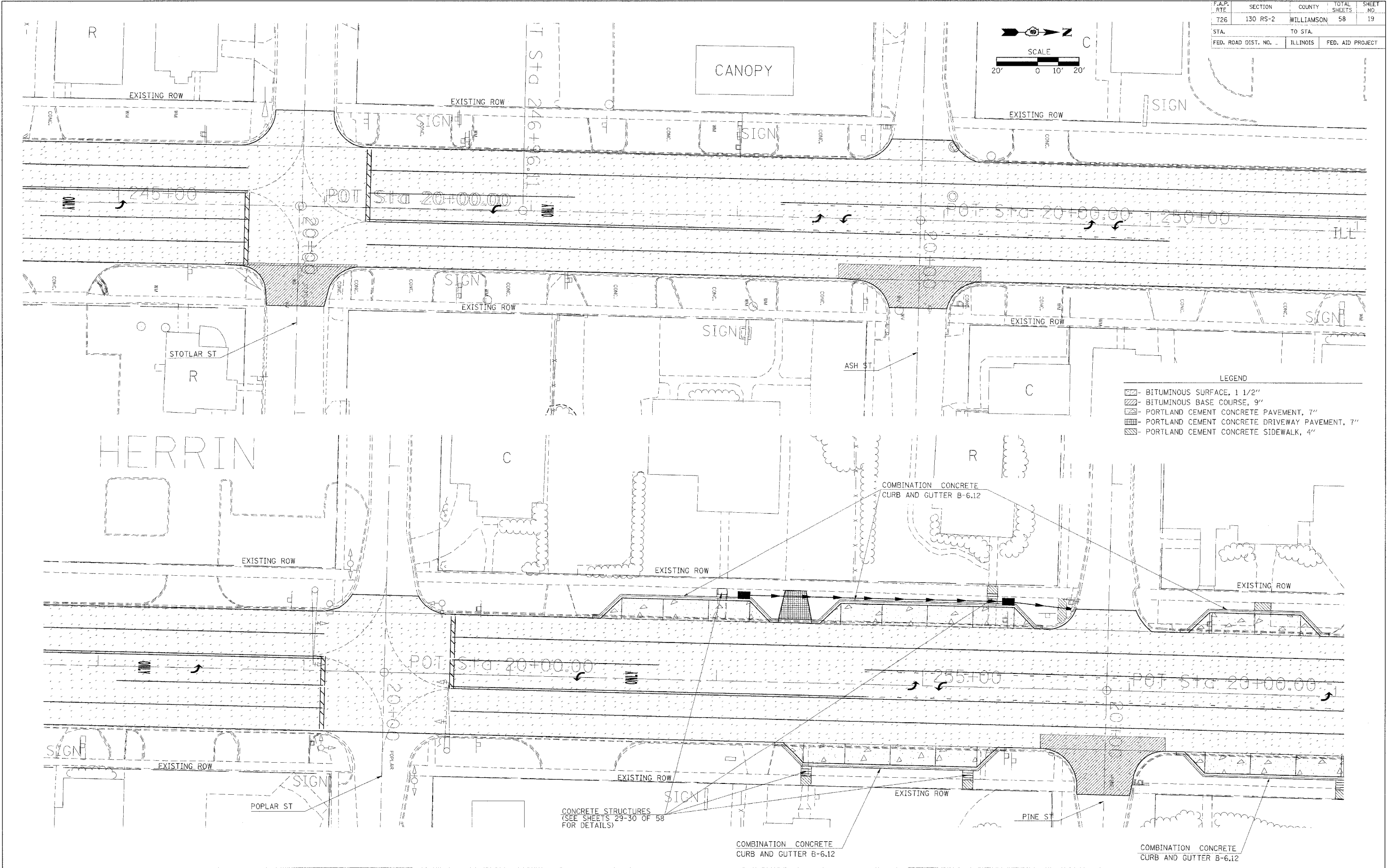
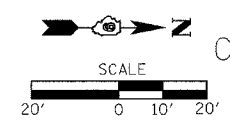


F.A.P. RTE	SECTION	COUNTY	TOTAL SHEETS	SHEET NO.
726	130 RS-2	WILLIAMSON	58	19
STA.		TO STA.		
FED. ROAD DIST. NO.		ILLINOIS	FED. AID PROJECT	



- LEGEND
- [Pattern] BITUMINOUS SURFACE, 1 1/2"
 - [Pattern] BITUMINOUS BASE COURSE, 9"
 - [Pattern] PORTLAND CEMENT CONCRETE PAVEMENT, 7"
 - [Pattern] PORTLAND CEMENT CONCRETE DRIVEWAY PAVEMENT, 7"
 - [Pattern] PORTLAND CEMENT CONCRETE SIDEWALK, 4"

CONCRETE STRUCTURES
(SEE SHEETS 29-30 OF 58
FOR DETAILS)

COMBINATION CONCRETE
CURB AND GUTTER B-6.12

COMBINATION CONCRETE
CURB AND GUTTER B-6.12

DATE = 2/16/78
FILE NAME = c:\pcc\mca\p98912\p98912.dwg
PLOT SCALE = 28.8000' / IN.
USER NAME = car-18096

PROPOSED CONSTRUCTION