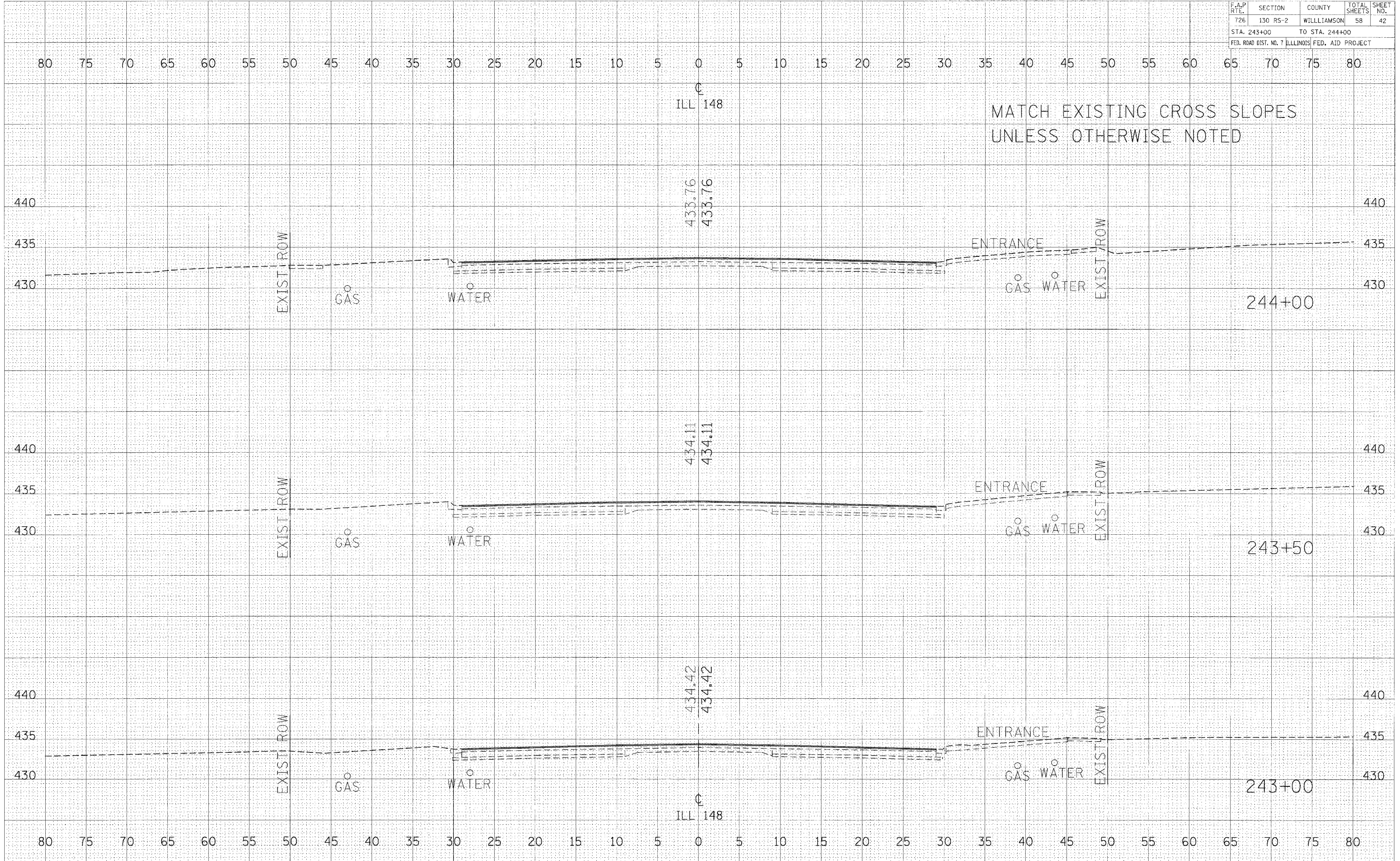


F.A.P. RTE.	SECTION	COUNTY	TOTAL SHEETS	SHEET NO.
726	130 RS-2	WILLIAMSON	58	42
STA. 243+00		TO STA. 244+00		
FED. ROAD DIST. NO. 7 ILLINOIS FED. AID PROJECT				

DATE	
BY	
NO.	
AREAS CHECKED	
FINAL SURVEY	
PLOTTED	
TEMPLATE	
NOTF BOOK	

DATE	
BY	
NO.	
AREAS CHECKED	
ORIGINAL SURVEY	
PLOTTED	
TEMPLATE	
NOTF BOOK	

PLOT DATE = 2/16/2006
 PLOT SCALE = 1" = 40.0000' IN
 USER NAME = kalleghd



MATCH EXISTING CROSS SLOPES
UNLESS OTHERWISE NOTED

CROSS SECTIONS - IL RTE 148 STA 243+00 TO STA 244+00