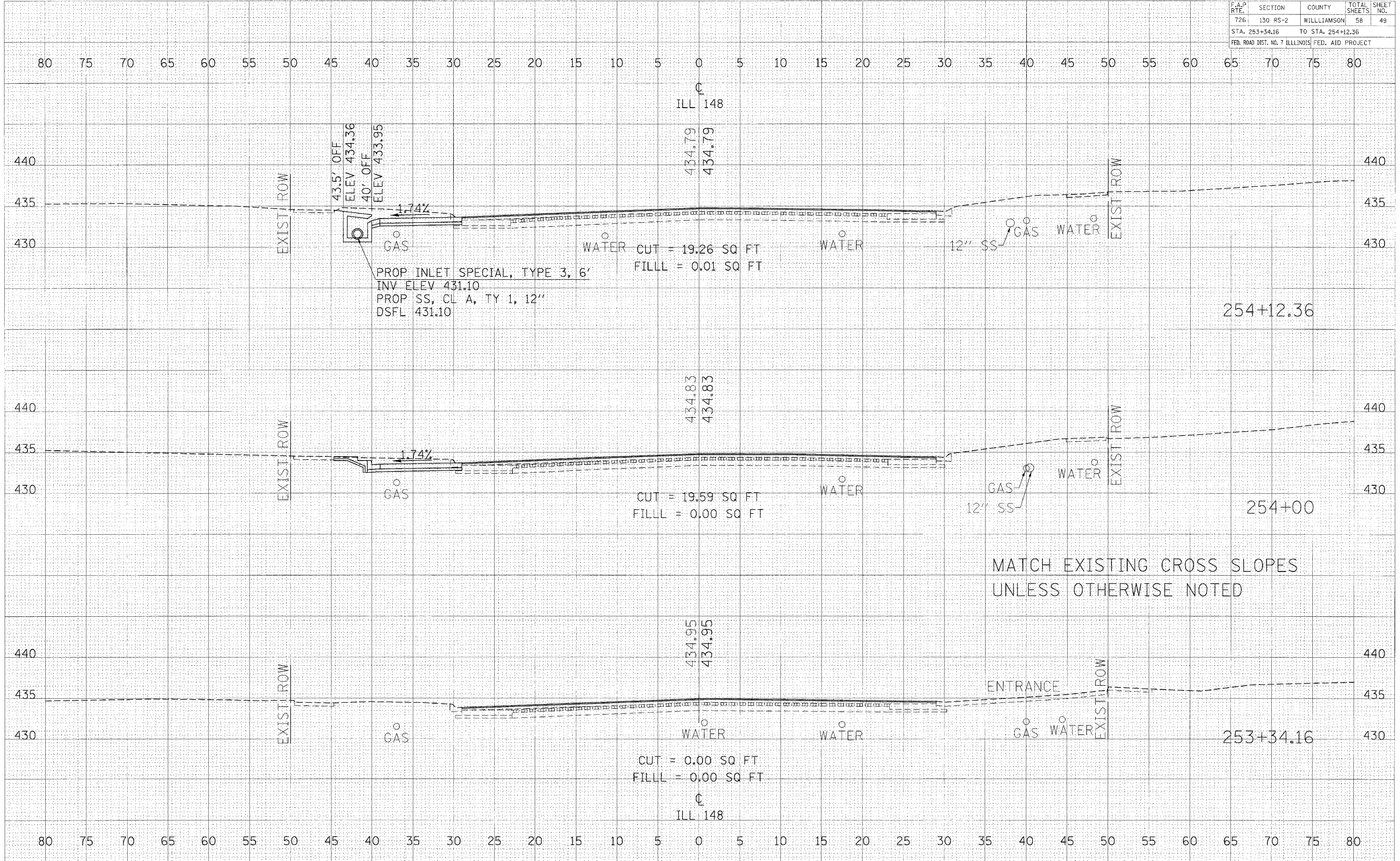


F.A.P. RTE.	SECTION	COUNTY	TOTAL SHEETS	SHEET NO.
726	130 RS-2	WILLIAMSON	58	49
STA. 253+34.16		TO STA. 254+12.36		
FED. ROAD DIST. NO. 7 ILLINOIS FED. AID PROJECT				

DATE	BY

DATE	BY

PLOT DATE = 2/16/2006  
 PLOT NAME = #111111  
 USER NAME = krallegard



CROSS SECTIONS - IL RTE 148 STA 243+34.16 TO STA 254+12.36