

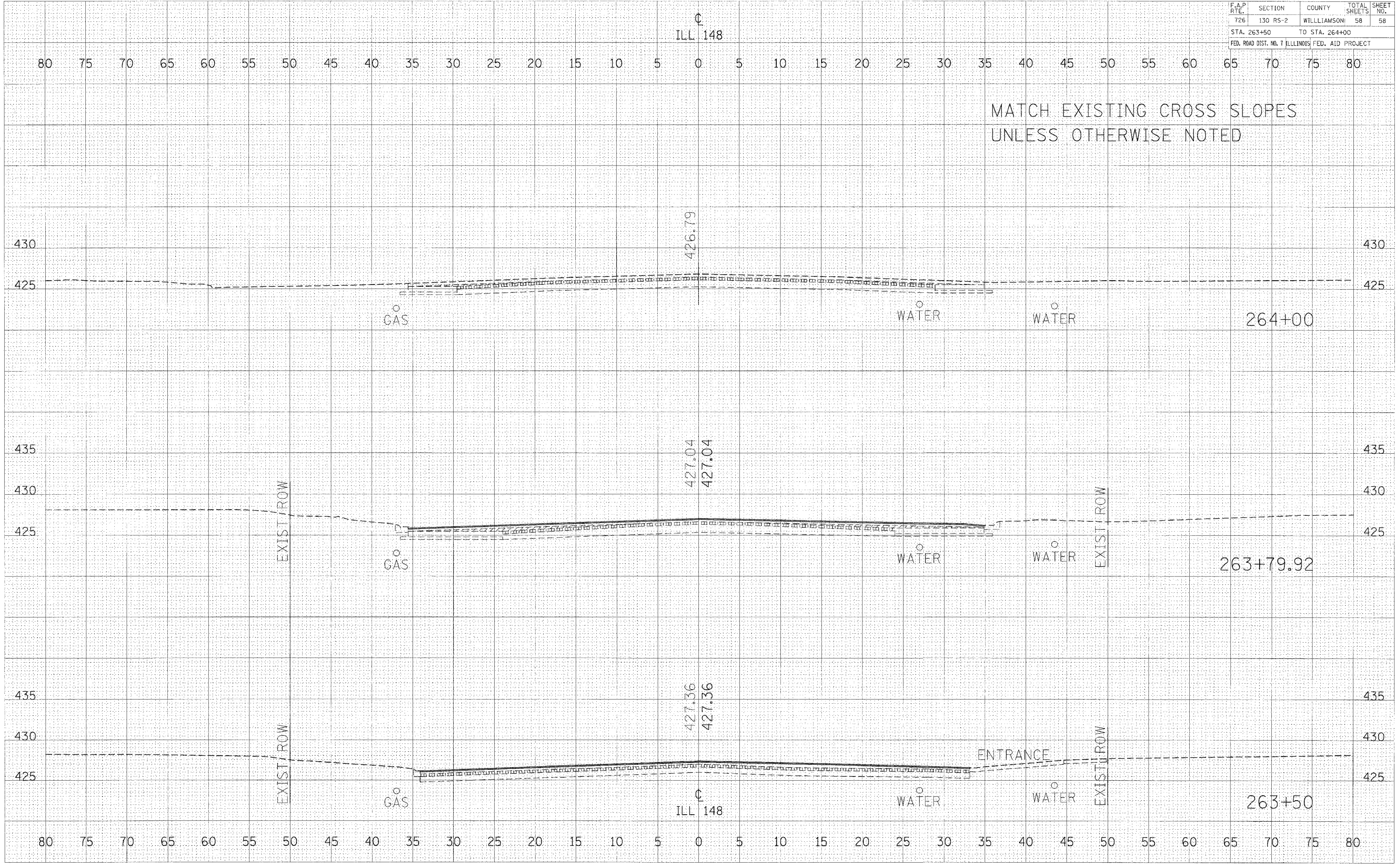
F.A.P. RTE.	SECTION	COUNTY	TOTAL SHEETS	SHEET NO.
726	130 RS-2	WILLIAMSON	58	58

STA. 263+50 TO STA. 264+00  
 FED. ROAD DIST. NO. 7 ILLINOIS FED. AID PROJECT

DATE	3/
BY	
NO.	
DATE	
BY	
NO.	
DATE	
BY	
NO.	

DATE	
BY	
NO.	
DATE	
BY	
NO.	
DATE	
BY	
NO.	

PLOT DATE = 2/16/2006  
 PLOT SCALE = 1/4" = 10'  
 USER NAME = kballgk



CROSS SECTIONS - IL RTE 148 STA 263+50 TO STA 264+00