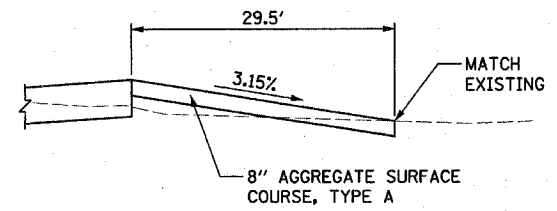
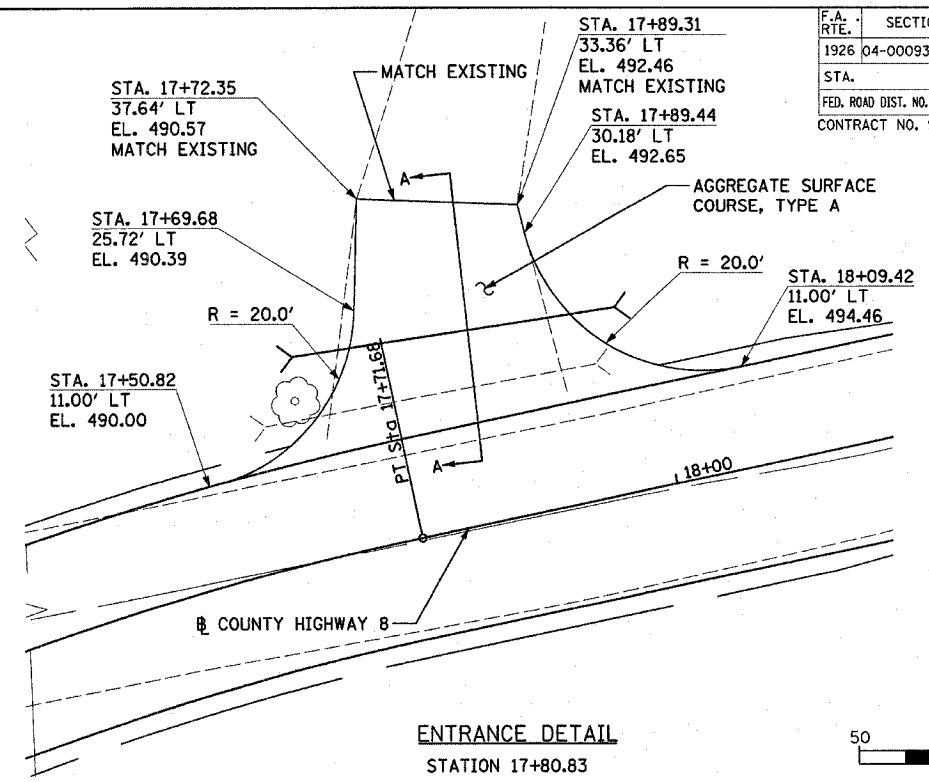


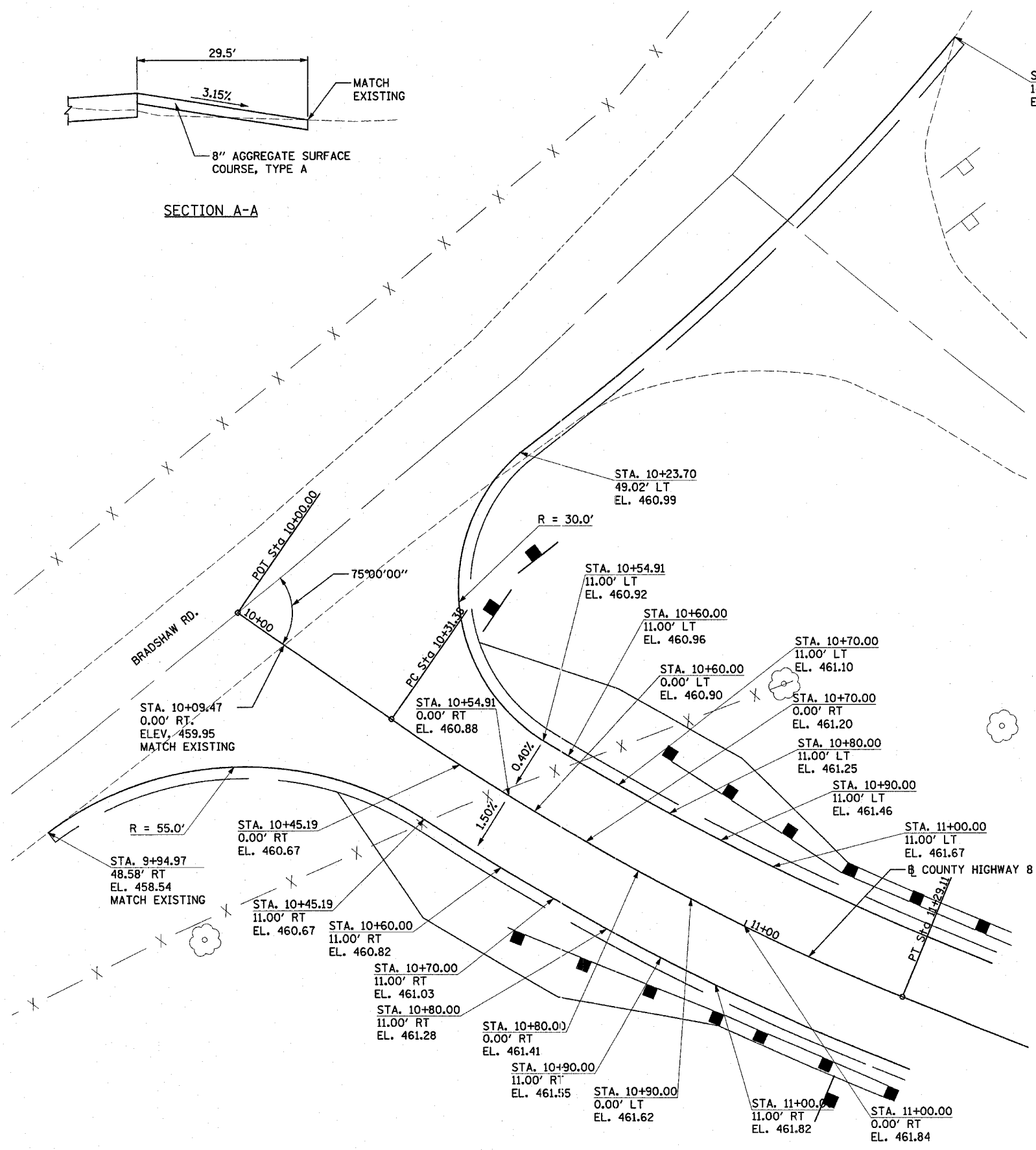
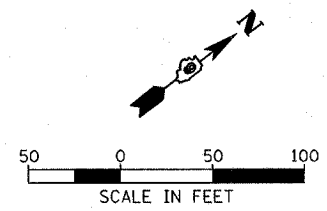
F.A. RTE.	SECTION	COUNTY	TOTAL SHEETS	SHEET NO.
1926	04-00093-00-BR	UNION	22	9
STA.	TO STA.			
FED. ROAD DIST. NO.	ILLINOIS	FED. AID PROJECT		
CONTRACT NO. 99236				



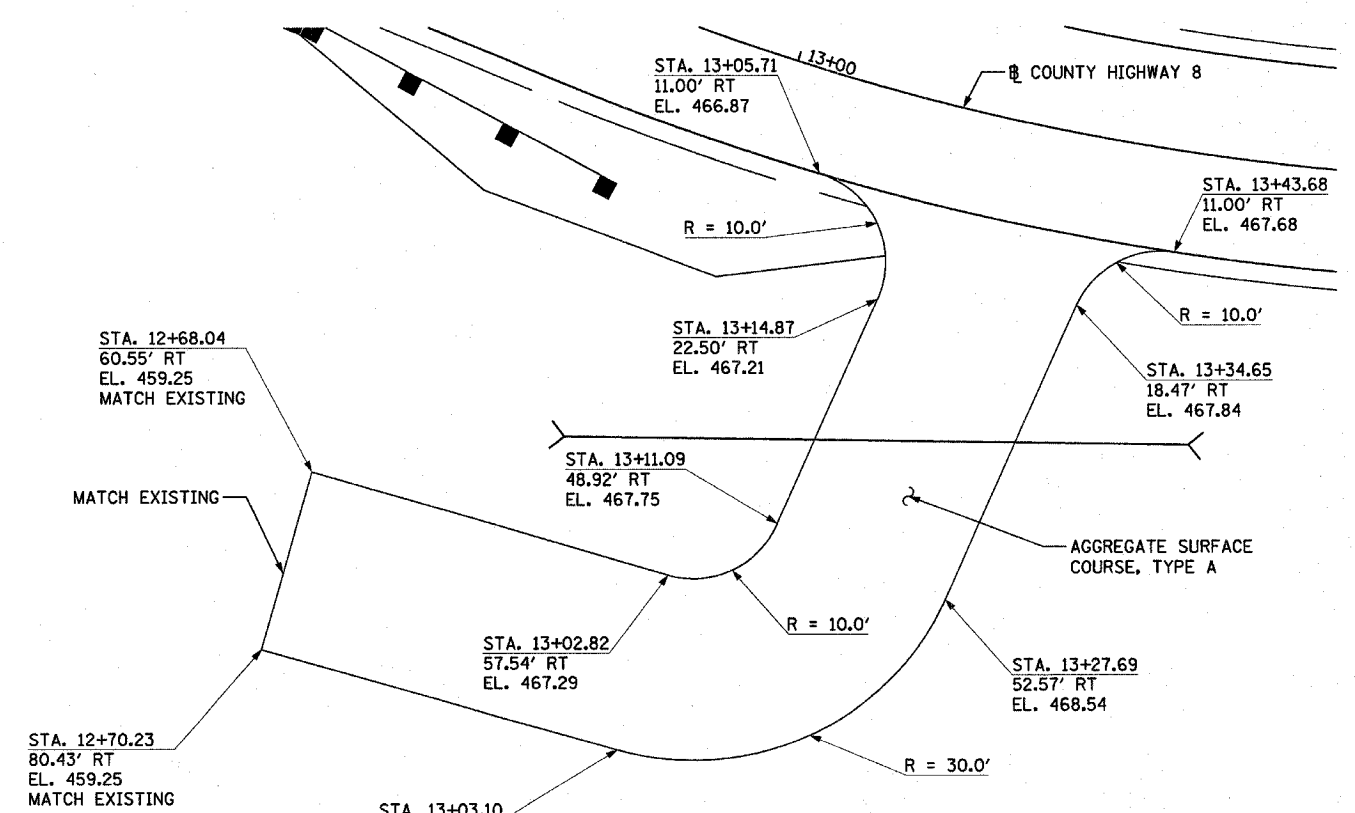
SECTION A-A



ENTRANCE DETAIL
STATION 17+80.83



INTERSECTION DETAIL
BRADSHAW RD. & C.H. 8



ENTRANCE DETAIL
STATION 13+25.00

REVISIONS	
NAME	DATE

ILLINOIS DEPARTMENT OF TRANSPORTATION
F.A.S. 1926
SECTION 04-00093-00-BR
UNION COUNTY
COUNTY HIGHWAY 8 OVER BRADSHAW CREEK

INTERSECTION AND
ENTRANCE DETAILS

SCALE: VERT. DRAWN BY RLA
 HORIZ. CHECKED BY JDS
 DATE 02/03/06

HANSON
 Hanson Professional Services Inc.
 Copyright Hanson Professional Services Inc. 2006
 LAYOUT RLA 10/07/05 rld
 DRAWN RLA 10/24/05 rld
 REVIEWED JDS 10/24/05 rld