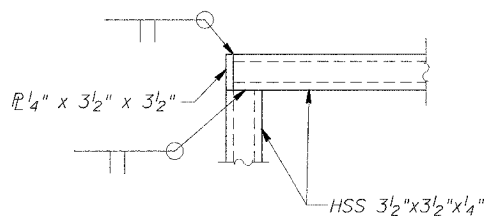
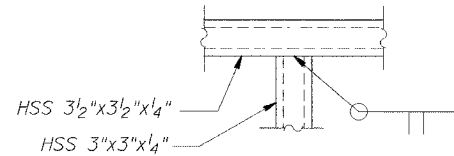


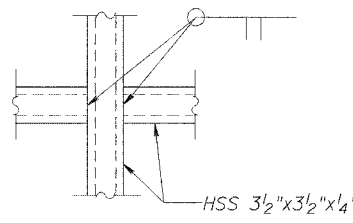
SECTION A-A



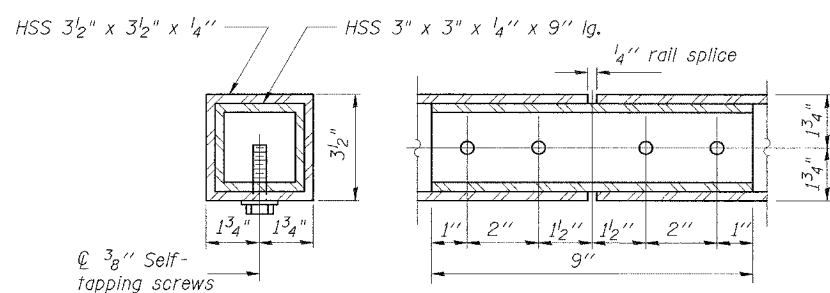
DETAIL A



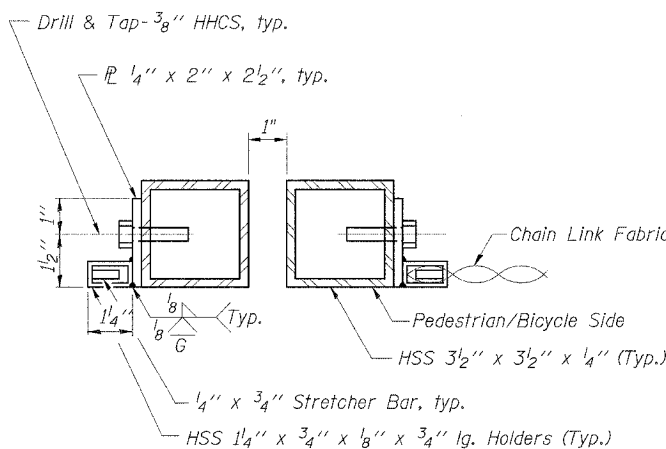
DETAIL B



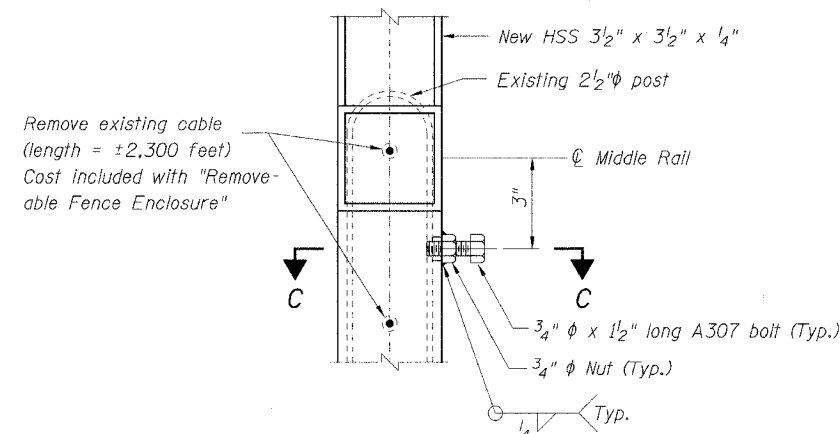
DETAIL C



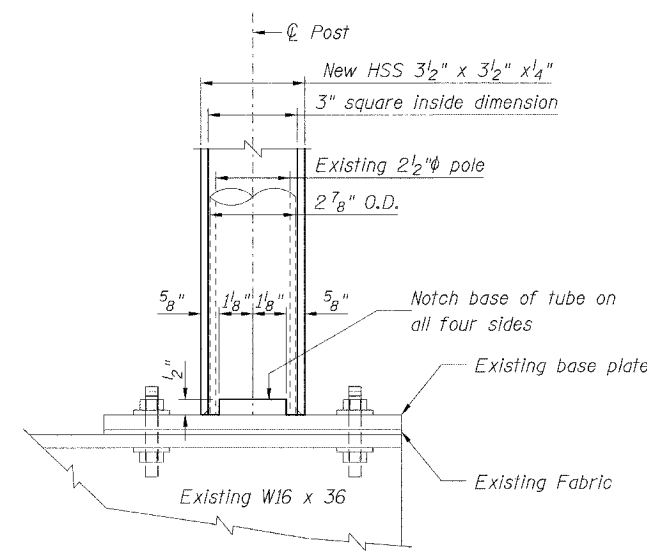
RAIL SPLICE



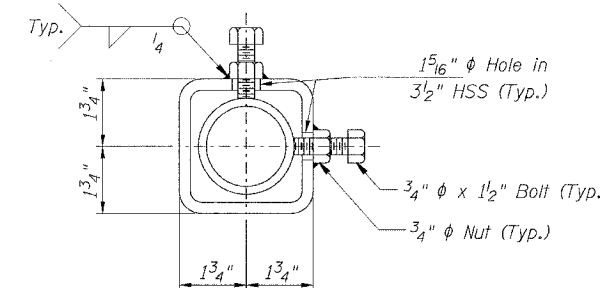
SECTION B-B



DETAIL "2"



DETAIL "1"



SECTION C-C

NOTES

Railing shall be according to Section 509 of the Standard Specifications, except as noted, and will be paid for at the Contract Unit Price per foot for Bicycle Railing.

The 9 gauge Fabric ties shall be according to Article 1006.27 (d) of the Standard Specifications.

Installation of the chain link fabric shall be according to Section 664 of the Standard Specifications.

Hollow structural sections shall conform to the requirements of ASTM designation A 500, Grade B, structural steel tubing.

All other steel shapes and plates shall conform to the requirements of AASHTO M 270 Grade 36.

The chain link fabric shall be placed along Pedestrian/Bicycle side as shown on Section B-B.

Stretcher bars shall be used at all four sides of each panel.

All posts, railing, splices, anchor devices, and bent plates shall be galvanized after shop fabrication according to AASHTO M 111 and ASTM A 385. All bolts, nuts, washers, and anchor rods shall be galvanized according to AASHTO M 232 except stainless steel bolts as noted.

Vent holes for galvanizing shall be placed in the posts and rails at locations that will not allow the accumulation of moisture in the members.

The chain link fabric shall conform to the requirements of Article 1006.27(a)(1)a, b or c of the Standard Specifications.

BILL OF MATERIAL

Item	Unit	Quantity
Removable Access Bridge Railing	Foot	1,133

Designed By TMM Checked By RLP
 Drawn By JUF Checked By TMM
 03/24/2006 01:53:31 PM G:\Work\Projects\Whiteside\SSinissippi FR-420\Plans\Access Bridge Railing Logn