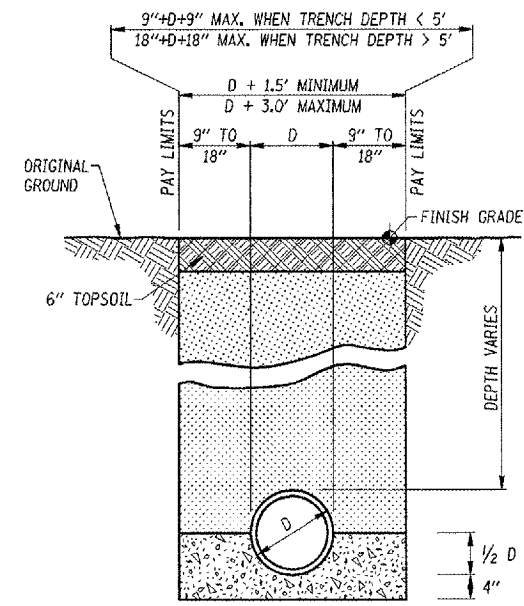
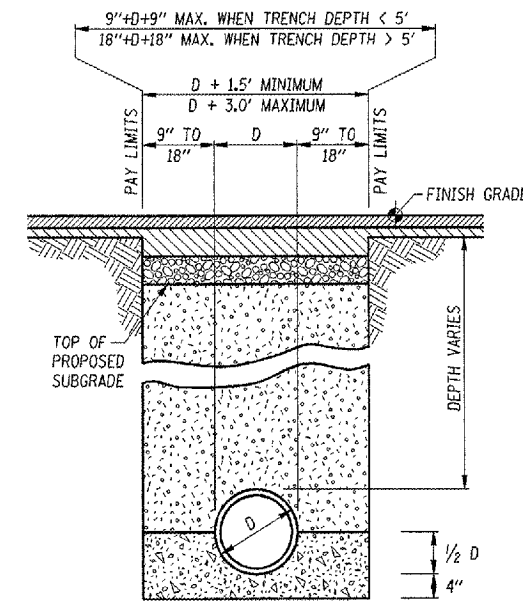


CONTRACT NUMBER	COUNTY	TOTAL SHEETS	SHEET NO.
GROO2	BOND	29	10

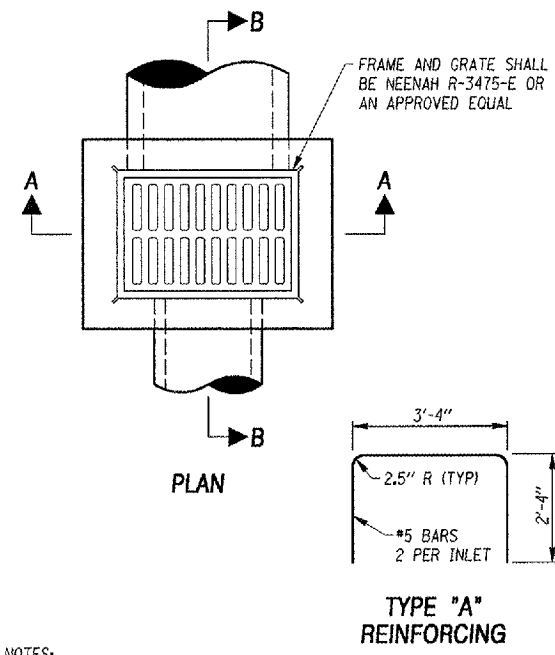


**TRENCHING DETAIL
UNDER UNPAVED AREAS**

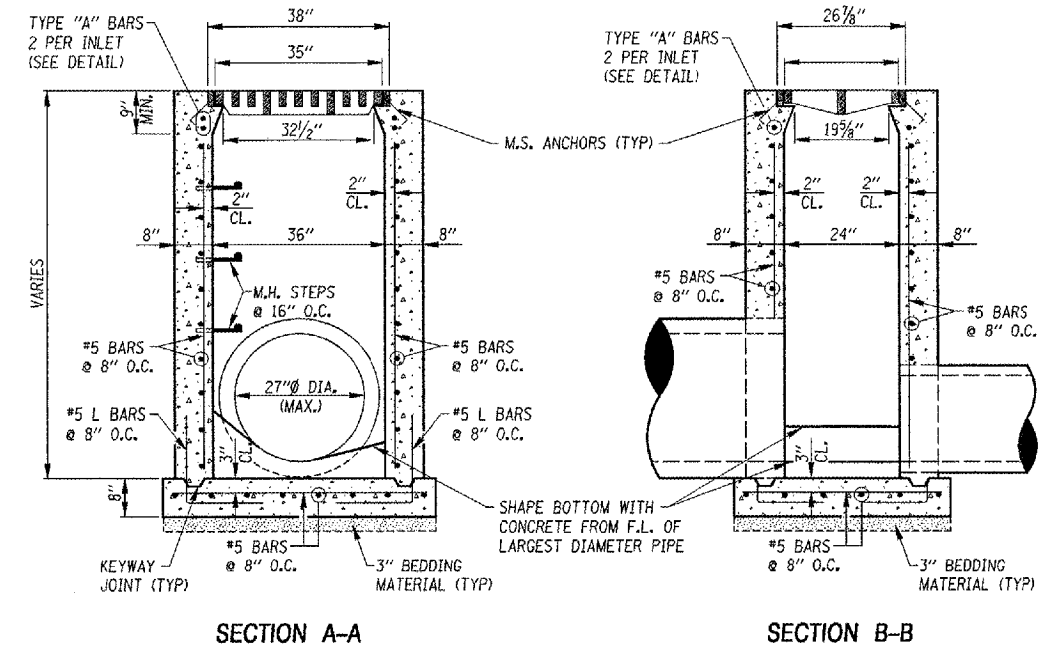


**TRENCHING DETAIL
UNDER PAVEMENT AREAS**

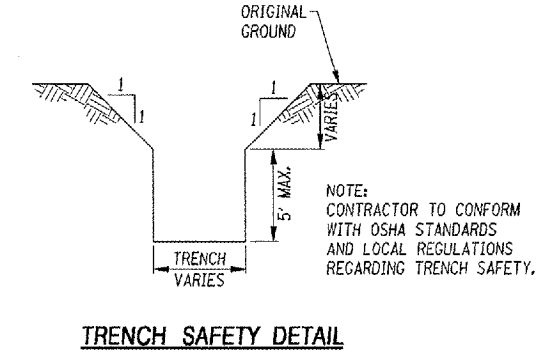
- LEGEND**
- FINAL BACKFILL**
EXCAVATED MATERIAL IN OTHER LOCATIONS
(INCIDENTAL TO COSTS OF PIPE)
 - FINAL BACKFILL**
SELECT GRANULAR BACKFILL (IDOT-CA 6) UNDER PAVEMENT AND 3' MIN.
OUTSIDE EDGE OF PAVEMENT, COMPACTED TO 95% MODIFIED PROCTOR DENSITY
(ASTM D-1557) (INCIDENTAL TO COST OF PIPE)
 - HAUNCHING**
SELECT GRANULAR BACKFILL (IDOT-CA 6)
(INCIDENTAL TO COST OF PIPE)



**TYPE "A"
REINFORCING**



**SECTION A-A
SECTION B-B
SPECIAL INLET DETAIL**



TRENCH SAFETY DETAIL

- NOTES:**
- SPECIAL INLET WALLS SHALL BE CONSTRUCTED OF PRECAST OR CAST-IN-PLACE CONCRETE IN ACCORDANCE WITH SECTION 751 OF THE STANDARD SPECIFICATIONS. THE MINIMUM WALL THICKNESS SHALL BE 8".
 - STEPS SHALL BE REQUIRED FOR ALL INLETS AND MANHOLES. STEPS SHALL BE IN ACCORDANCE WITH STANDARD 602701 HEREIN AND ARTICLE 751-2.7 OF THE STANDARD SPECIFICATIONS.
 - REINFORCEMENT BARS SHALL CONFORM TO THE REQUIREMENTS OF AASHTO M-31, M-42, OR M-53 GRADE 60.
 - THE CONTRACT UNIT PRICE PER EACH SPECIAL INLET SHALL INCLUDE THE INLET, FRAME, GRATE, STEPS, AND ALL REINFORCEMENT BARS IN PLACE AND COMPLETE PER UNIT.

DATE	DESCRIPTION OF THE REVISIONS	BY

GREENVILLE AIRPORT AUTHORITY GREENVILLE, ILLINOIS

HENRY, MEIBENHEIMER & GENDE, INC.
ENGINEERS
CARLYLE, ILLINOIS 62201
www.hmgeng.com
(618) 504-3711 Fax (618) 504-8217

DRAINAGE DETAILS

ILL. PROJ. NO.	GRE-3215
A.I.P. PROJ. NO.	3-17-0049-B4
FILE NAME	GA-DRAINDET
DATE	03-24-2006

H.M.G. NO. 6636