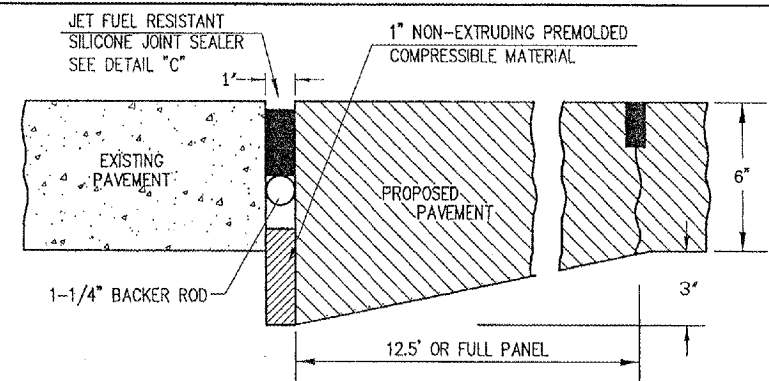
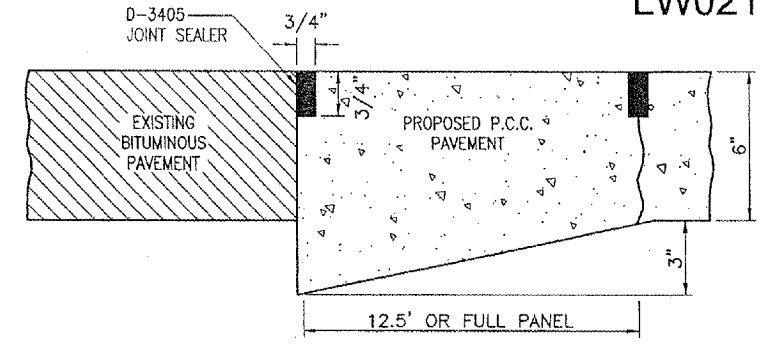


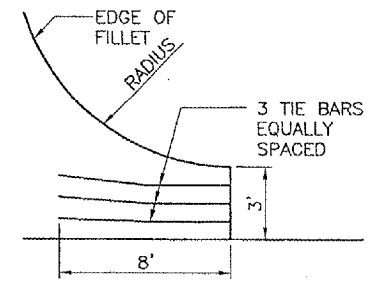
CONSTRUCTION JOINTS
CONTRACTION JOINTS



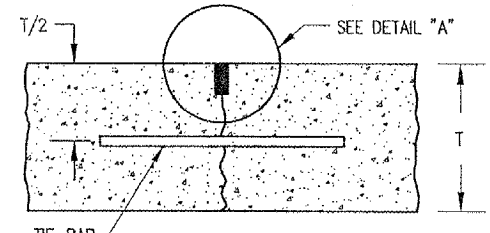
TYPE-E THICKENED EDGE EXPANSION JOINTS



TYPE-A THICKENED EDGE EXPANSION JOINTS



FILLET DETAIL
 "NOT TO SCALE"



CONTRACTION JOINTS
TYPE G HINGED

JOINTING NOTES

ALL EXPOSED JOINT EDGES SHALL BE EDGED WITH AN APPROVED TOOL HAVING A RADIUS OF 1/4" OR STONED TO PRODUCE THE 1/8" CHAMFER.

ALL LONGITUDINAL AND TRANSVERSE CONTRACTION AND CONSTRUCTION JOINTS SHALL BE SAWED.

ALL DOWEL BARS SHALL BE SECURELY HELD IN PLACE BY MEANS OF A DOWEL BAR ASSEMBLY WHICH WILL INSURE THAT THEY WILL REMAIN PARALLEL TO THE SURFACE OF THE PAVEMENT AND TO THE CENTERLINES OF THE PAVEMENT LANES. THE DOWEL BAR ASSEMBLIES SHALL BE APPROVED BY THE ENGINEER PRIOR TO INSTALLATION. DOWELS SHALL BE 3/4" DIA., 18" LENGTH AND 12" SPACING.

THE DOWEL BARS SHALL BE SECURELY HELD IN PLACE BY SUPPORT PINS OR OTHER METHODS TO PREVENT SHIFTING DURING AND AFTER CONCRETE PLACEMENT. SUPPORT PINS SHALL BE OF SUFFICIENT LENGTH TO PENETRATE AT LEAST 6" INTO THE SUBGRADE.

ALLOWABLE TOLERANCES FOR GROOVE DEPTH WILL BE +1/8" FOR CONSTRUCTION JOINTS AND +1/4" FOR CONTRACTION JOINTS.

THE COST OF ALL DOWEL BARS, TIE-BARS, SAWING AND SEALING SHALL BE INCLUDED IN THE COST OF THE P.C.C. PAVEMENT.

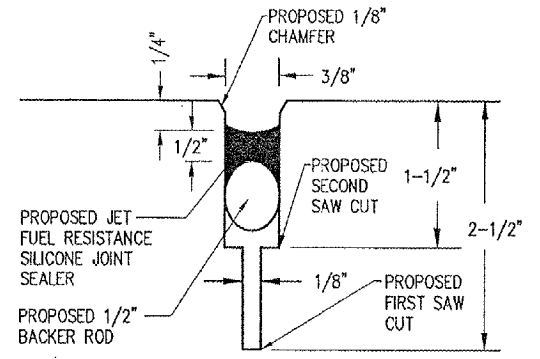
PRIOR TO PLACING ADJACENT PAVEMENT SECTIONS, THE VERTICAL EDGE SHALL BE CHECKED FOR TRUENESS, IF THE FACE IS BURRED OR IRREGULAR, THE CONTRACTOR SHALL GRIND, STONE, OR SAW THE FACE A MINIMUM OF 2" IN DEPTH TO PRODUCE A SMOOTH AND STRAIGHT EDGE.

WHEN CONSTRUCTING "FILL-IN" PAVEMENT LANES THE CONTRACTOR SHALL USE BELTING OR OTHER PROTECTIVE MATERIAL FOR THE PAVING MACHINE TO TRAVEL ON AND WILL ROPE THE TRANSVERSE JOINTS.

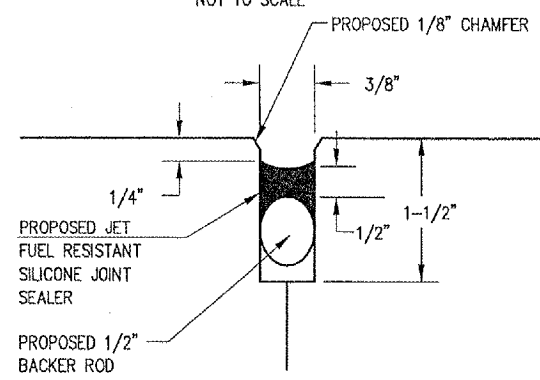
JOINT SEALANT SHALL BE AS SPECIFIED IN THE RECURRING SPECIAL PROVISIONS ITEM AR605000.

CURING COMPOUND WILL BE AS SPECIFIED IN THE SPECIFICATIONS, AND SHALL BE APPROVED PRIOR TO THE PAVING OPERATION BY THE ENGINEER.

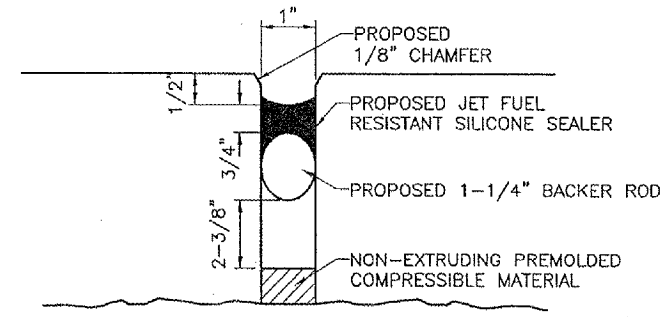
ALL NON-ALIGNED EDGES WILL BE SAWED FULL DEPTH.



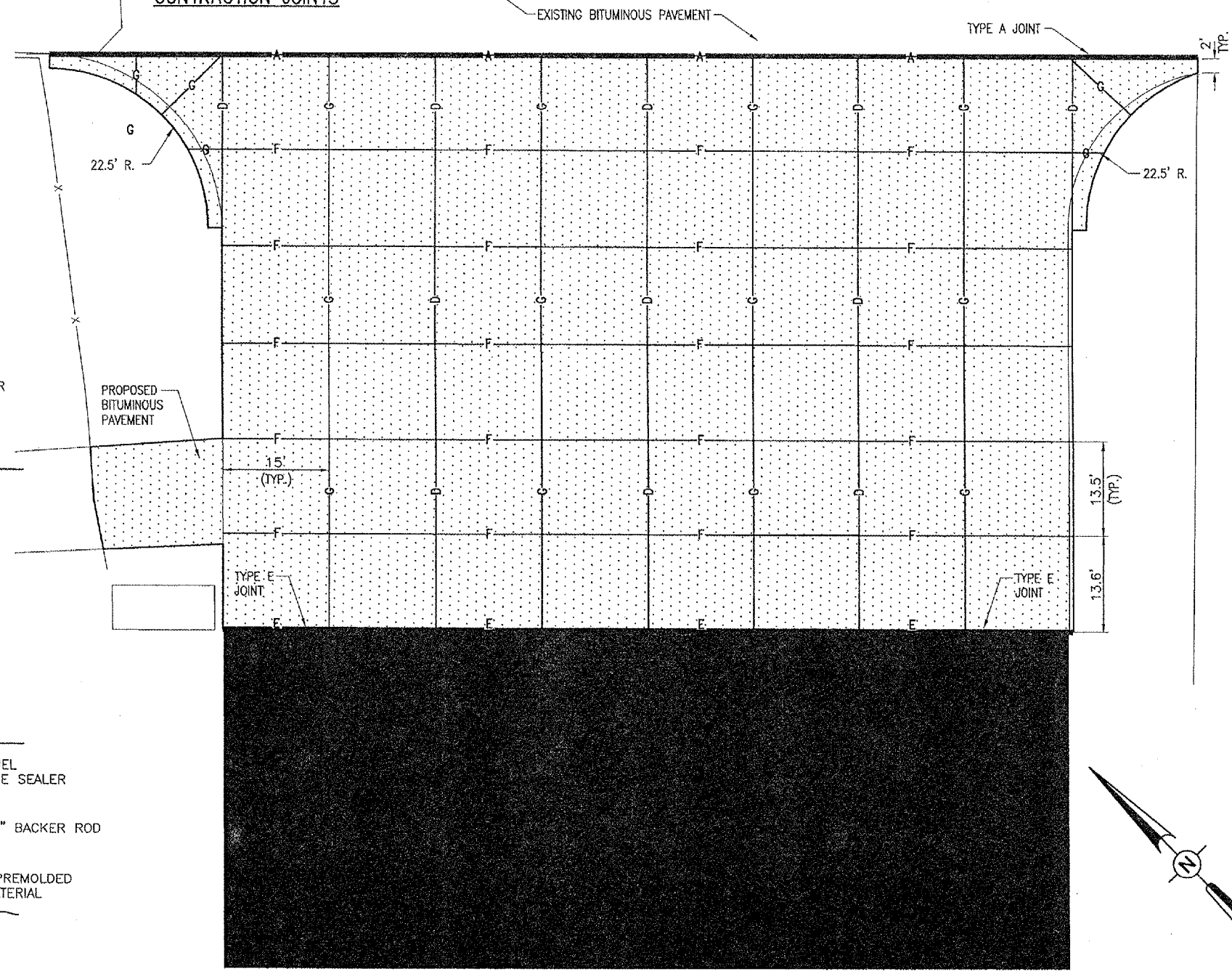
DETAIL "A"
 NOT TO SCALE



DETAIL "B"
 NOT TO SCALE

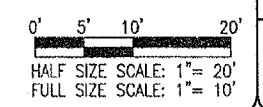
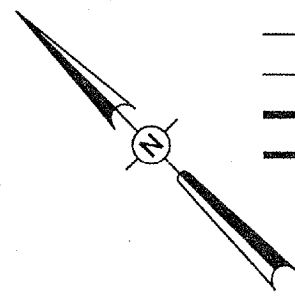


DETAIL "C"
 "NOT TO SCALE"



LEGEND

- EXISTING PAVEMENT
- EXISTING BUILDING
- EXISTING FENCE
- PROPOSED IMPROVEMENTS
- PROPOSED TYPE D LONGITUDINAL CONSTRUCTION JOINT
- PROPOSED TYPE G LONGITUDINAL CONTRACTION JOINT
- PROPOSED TYPE F TRANSVERSE CONTRACTION JOINT
- PROPOSED TYPE A THICKENED EDGE EXPANSION JOINT
- PROPOSED TYPE E THICKENED EDGE EXPANSION JOINT



MAR 29, 2006 10:35 AM CAH I:\AIRPORTS\LAURENCE\812-06\APN\AIRPORT\ SHEETS\R-161\JNT.DWG - VINCENNES U. AREA

BY	
REVISION	
DATE	

MID-AMERICAN AIR CENTER
 LAWRENCEVILLE-VINCENNES AIRPORT
 LAWRENCEVILLE, ILLINOIS

IFB Project No. 812-06APND-0800	
Revision R-161JNT.DWG	
Scale 1" = 10'	
Date 12/12/05	
LAYOUT 12/12/05	
DRAWN B.A.K.	12/12/05
REVIEWED C.A.H.	1/12/06



RECONSTRUCTION OF
 TWO APRON AREAS
 PROPOSED
 JOINTING PLAN FOR
 VINCENNES UNIVERSITY AREA