

STATE OF ILLINOIS
DEPARTMENT OF TRANSPORTATION

F.A. RTE.	SECTION	COUNTY	TOTAL SHEETS	SHEET NO.
		**	18	1
ILLINOIS			CONTRACT NO. 74783	

•D7 GUARDRAIL IMPROVEMENTS 2017
•COLES & CUMBERLAND

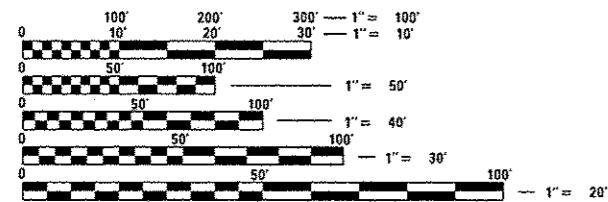
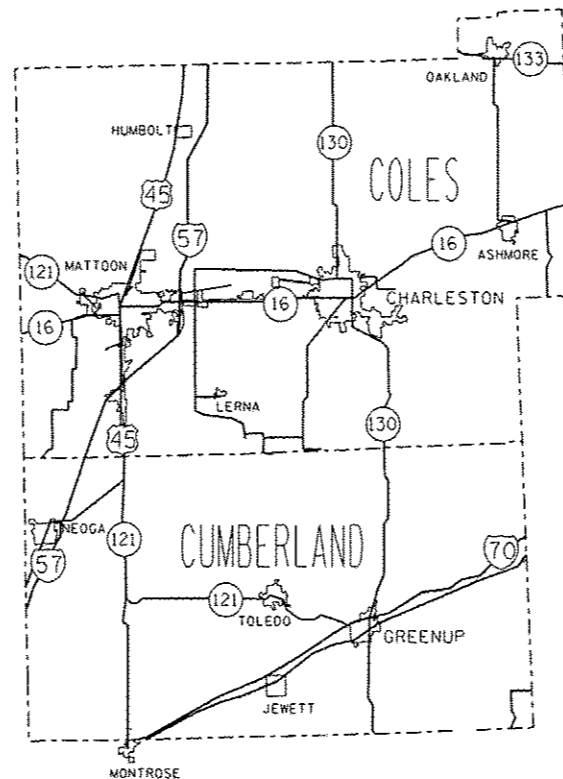
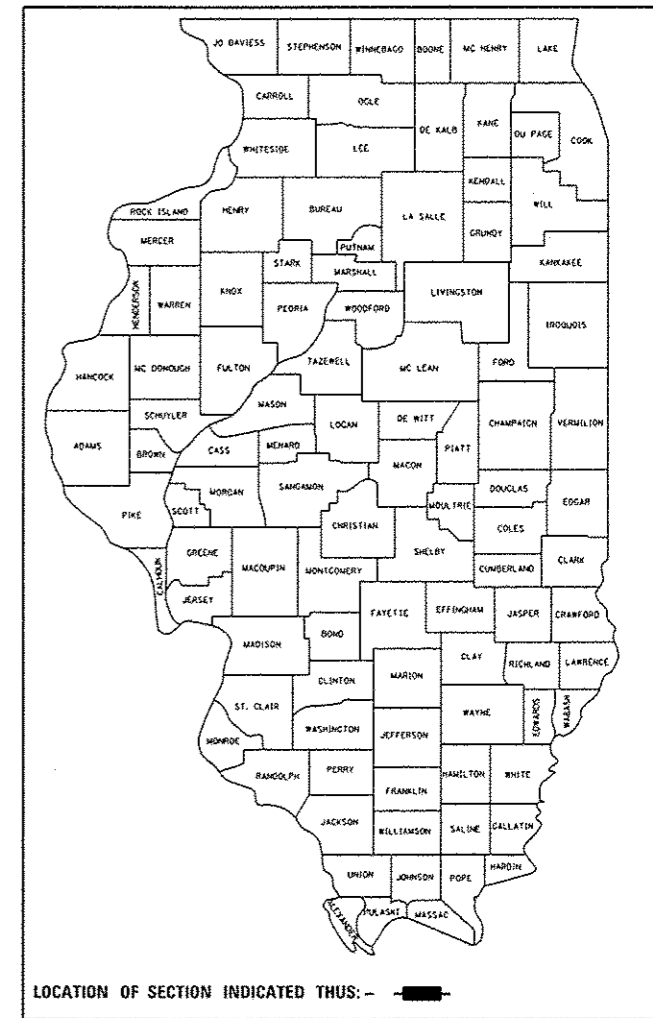
D-97-006-17

FOR INDEX OF SHEETS, SEE SHEET NO. 2

PROPOSED HIGHWAY PLANS

VARIOUS ROUTE
SECTION D7 GUARDRAIL IMPROVEMENTS 2017
PROJECT HSIP-000V(099)
TYPE of IMPROVEMENT-SAFETY
COLES & CUMBERLAND COUNTY

C-97-010-17



FULL SIZE PLANS HAVE BEEN PREPARED USING STANDARD ENGINEERING SCALES. REDUCED SIZED PLANS WILL NOT CONFORM TO STANDARD SCALES. IN MAKING MEASUREMENTS ON REDUCED PLANS, THE ABOVE SCALES MAY BE USED.

J.U.L.I.E.
JOINT UTILITY LOCATION INFORMATION FOR EXCAVATION
1-800-892-0123
OR 811

PROJECT ENGINEER ROB MACKLIN
PROJECT MANAGER LYNN McCLELLAN

CONTRACT NO. 74783

GROSS LENGTH = x.xx FT. = x.xxx MILE
NET LENGTH = x.xx FT. = x.xxx MILE

STATE OF ILLINOIS
DEPARTMENT OF TRANSPORTATION

SUBMITTED JANUARY 27 20 17
Jeffrey M. South
REGIONAL FOUR ENGINEER

Mar 24 20 17
Maureen M. Addis P.E.
ENGINEER OF DESIGN AND ENVIRONMENT

Mar 24 20 17
Maureen M. Addis
DIRECTOR OF PROGRAM DEVELOPMENT

PRINTED BY THE AUTHORITY
OF THE STATE OF ILLINOIS

GENERAL NOTES

THIS PROJECT IS LOCATED ON VARIOUS ROUTES IN COLES OR CUMBERLAND COUNTIES ALL LOCATED WITHIN REGION 4-DISTRICT 7. THE WORK INCLUDED IN THIS SECTION CONSISTS OF VARIOUS TYPES OF GUARDRAIL REMOVAL, REPLACEMENT AND ALL OTHER WORK NECESSARY TO COMPLETE THIS SECTION.

THE LOCATIONS AS SHOWN ON THE LOCATION MAPS ARE FOR INFORMATION ONLY. CONTRACTOR AND RESIDENT ENGINEER SHOULD FIND SPECIFIC LOCATIONS USING THE LATITUDE AND LONGITUDE ON THE END SECTION LOCATION SPREAD SHEETS.

REMOVAL OF DAMAGED MATERIALS SHALL INCLUDE DISMANTLING, LOADING, HAULING AND DISPOSAL. THE WORK SITE SHALL BE LEFT IN A SAFE AND ORDERLY CONDITION.

NO MATERIAL SHALL BE LEFT ON OR NEAR THE ROADWAY DURING NON-WORKING HOURS.

ANY NECESSARY TRAFFIC CONTROL SHALL BE PROVIDED BY THE CONTRACTOR; APPROPRIATE STANDARDS ARE LISTED AT RIGHT.

REMOVED GUARDRAIL THAT IS NOT REPLACED ON THE SAME DAY MUST BE DELINEATED WITH LIGHTED BARRICADES. NO LOCATIONS SHALL BE LEFT WITHOUT EITHER LIGHTED BARRICADES OR RESTORED GUARDRAIL AT ANY TIME.

GUARDRAIL MARKERS SHALL NOT BE ATTACHED TO TERMINAL SECTIONS.

ILLINOIS STATE LAW REQUIRES A 48-HOUR NOTICE TO BE GIVEN TO UTILITIES BEFORE DIGGING. FIELD MARKING OF FACILITIES MAY BE OBTAINED BY CONTACTING J.U.L.I.E. (PH. 800-892-0123) OR FOR NON-MEMBER, THE UTILITY COMPANY DIRECTLY.

FURNISHED EXCAVATION, AS SHOWN, IS FOR CONSTRUCTING THE PROPOSED SHOULDER WIDENING TRANSITION FOR TYPE 1 (SPECIAL) GUARDRAIL TERMINALS (STANDARD 630301), AS NEEDED. QUANTITIES SHOWN ARE APPROXIMATE.

NO OVERNIGHT LANE CLOSURES WILL BE ALLOWED.

THE CONTRACTOR IS ADVISED THAT THE GUARDRAIL PAY ITEMS INCLUDED IN THE PLANS MAY BE USED TO REPLACE SPBGR AND TRAFFIC BARRIER TERMINALS FOR THE NEW MIDWEST STANDARD AS SHOWN IN THE HIGHWAY STANDARDS AS WELL AS SPBGR AND TRAFFIC BARRIER TERMNAL INSTALLED PRIOR TO JAN. 1, 2007. NO ADDITIONAL COMPENSATION WILL BE ALLOWED FOR UTILIZING THE CURRENT MIDWEST STANDARDS.

THE PAY ITEM "TERMINAL MARKER-DIRECT APPLIED" SHALL BE ATTACHED TO THE TRAFFIC BARRIER TERMINAL IN A WAY THE MEETS OR EXCEEDS THE MANUFACTURER'S SPECIFICATIONS.

INDEX OF SHEETS

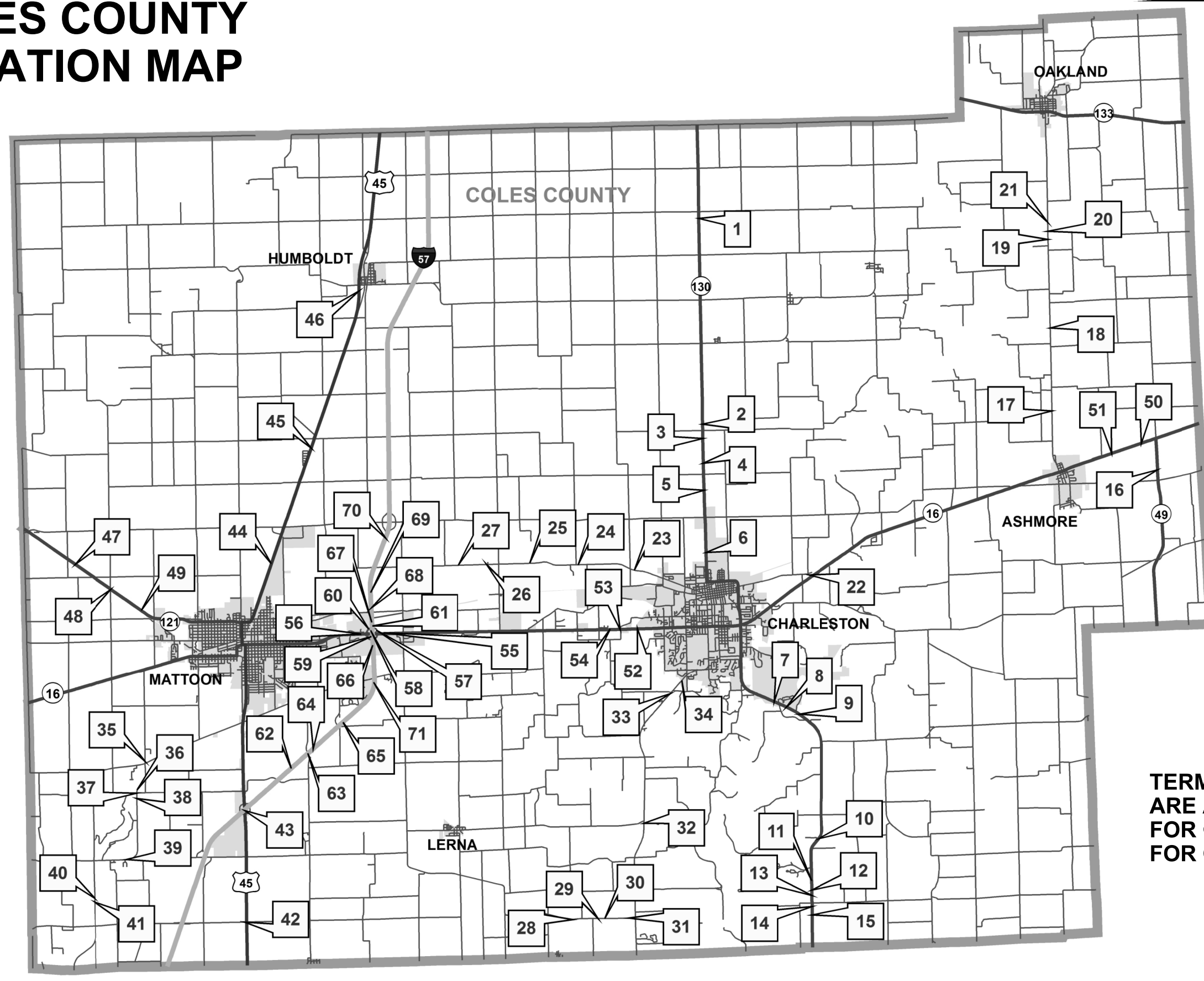
- 1 COVER SHEET
- 2 INDEX OF SHEETS AND GENERAL NOTES
- 3 SUMMARY OF QUANTITIES
- 4 MAP OF COLES COUNTY LOCATIONS
- 5-14 COLES COUNTY REPLACEMENTS
- 15 MAP OF CUMBERLAND COUNTY LOCATIONS
- 16-18 CUMBERLAND COUNTY REPLACEMENTS

THE FOLLOWING STANDARDS ARE A PART OF THESE PLANS AND ARE INCLUDED AFTER SHEET NO. 18:

- 000001-06 STANDARD SYMBOLS, ABBREVIATIONS AND PATTERNS
- 630001-11 STEEL PLATE BEAM GUARDRAIL
- 630301-07 SHOULDER WIDENING FOR TYPE 1 (SPECIAL) GUARDRAIL TERMINALS
- 631011-10 TRAFFIC BARRIER TERMINAL, TYPE 2
- 701001-02 OFF-ROAD OPERATIONS, 2L, 2W, MORE THAN 15' AWAY
- 701006-05 OFF-ROAD OPERATIONS, 2L, 2W, 15' TO 24" FROM PAVEMENT EDGE
- 701011-04 OFF-ROAD MOVING OPERATION, 2L, 2W, DAY ONLY
- 701101-05 OFF-ROAD OPERATIONS, MULTILANE, 15' TO 24" FROM PAVEMENT EDGE
- 701106-02 OFF-ROAD OPERATIONS, MULTILANE, MORE THAN 15' AWAY
- 701201-04 LANE CLOSURE, 2L, 2W, DAY ONLY, FOR SPEEDS >= 45 MPH
- 701301-04 LANE CLOSURE, 2L, 2W, SHORT TIME OPERATIONS
- 701400-09 APPROACH TO LANE CLOSURE, FREEWAY/EXPRESSWAY
- 701406-11 LANE CLOSURE, FREEWAY/EXPRESSWAY, DAY OPERATIONS ONLY
- 701411-09 LANE CLOSURE, MULTILANE, AT ENTRANCE OR EXIT RAMP, FOR SPEED >= 45 MPH
- 701421-08 LANE CLOSURE, MULTILANE, DAY OPERATIONS ONLY, FOR SPEEDS >=45 MPH TO 55 MPH
- 701428-01 TRAFFIC CONTROL, SETUP AND REMOVAL, FREEWAY/EXPRESSWAY
- 701456-04 PARTIAL EXIT RAMP CLOSURE FREEWAY/EXPRESSWAY
- 701501-06 URBAN LANE CLOSURE, 2L, 2W UNDIVIDED
- 701502-07 URBAN LANE CLOSURE, 2L, 2W, WITH BIDIRECTIONAL LEFT TURN LANE
- 701601-09 URBAN LANE CLOSURE, MULTILANE, 1W OR 2W WITH NONTRAVERSABLE MEDIAN
- 701602-08 URBAN LANE CLOSURE, MULTILANE, 2W WITH BIDIRECTIONAL LEFT TURN LANE
- 701606-10 URBAN SINGLE LANE CLOSURE MULTILANE, 2W WITH MOUNTABLE MEDIAN
- 701611-01 URBAN HALF ROAD CLOSURE, MULTILANE, 2W WITH MOUNTABLE MEDIAN
- 701701-10 URBAN LANE CLOSURE, MULTILANE INTERSECTION
- 701901-06 TRAFFIC CONTROL DEVICES
- 725001-01 OBJECT AND TERMINAL MARKERS
- 782006 GUARDRAIL AND BARRIER WALL REFLECTOR MOUNTING DETAILS

FILE NAME =	USER NAME = steffenmk	DESIGNED -	REVISED -	STATE OF ILLINOIS DEPARTMENT OF TRANSPORTATION	INDEX OF SHEETS & GENERAL NOTES				F.A. RTE.	SECTION	COUNTY	TOTAL SHEETS	SHEET NO.	
pw:\IL\084EBIDINTEG\illinois.gov\PIDOT\Documents\DOT Offices\District 7\Projects\74783\Drawings\CAD\Sheets\0774783-sht-gennoted		CHECKED -	REVISED -									18	2	
Default	PLOT SCALE = 60.0000' / in.	CHECKED -	REVISED -			SCALE:	SHEET	OF	SHEETS	STA.	TO	STA.	CONTRACT NO. 74783	
	PLOT DATE = 1/30/2017	DATE -	REVISED -										ILLINOIS FED. AID PROJECT	

COLES COUNTY LOCATION MAP



**TERMINAL LOCATIONS SHOWN
ARE APPROXIMATE AND ARE
FOR GENERAL INFORMATION
FOR CONSTRUCTION.**

FILE NAME =	USER NAME = steffenmk	DESIGNED -	REVISED -	STATE OF ILLINOIS DEPARTMENT OF TRANSPORTATION	COLES COUNTY LOCATION MAP				F.A. RTE.	SECTION	COUNTY	TOTAL SHEETS	SHEET NO.
pw:\IL\084EBIDINTEG.illinois.gov\PWIDOT\Documents\DOT Offices\District 7\Projects\74783\Drawings\CAD\Sheets\0774783-sht-schedule		DRAWN -	REVISED -		SCALE:	SHEET	OF	SHEETS	STA.	TO	STA.	18	4
Default		CHECKED -	REVISED -		CONTRACT NO. 74783								
		DATE -	REVISED -		ILLINOIS FED. AID PROJECT								

COLES COUNTY

Map Location	GIS Guardrail ID	Route	Terminal Location	Structure No/Intersection	Latitude	Longitude	Guardrail Removal (Foot)	Traffic Barrier Terminal Type 1 (Special) Tangent (Each)	Furnished Excavation (Cu Yd)	Steel Plate Beam Guardrail, Type A, 6 Foot Posts (Foot)	Traffic Barrier Terminal Type 2 (Each)	Vertical Adjustment of Guardrail (Foot)
1	0150005	IL 130	NW QUAD	015-8312	39.62108044	-88.17714032	50	1	10			37.5
1	0150006	IL 130	NE QUAD	015-8312	39.62086576	-88.17700387	50	1	10			25
1	0150007	IL 130	SW QUAD	015-8312	39.62028384	-88.17714785	50	1	10			37.5
2	0150012	IL 130	NW QUAD	Box N of 1200N	39.55207561	-88.17744334	50	1	10			25
2	0150014	IL 130	SW QUAD	Box N of 1200N	39.55152101	-88.17744190	50	1	10			25
3	0150017	IL 130	NE QUAD	015-8660	39.54786140	-88.17732770	50	1	10			0
3	0150018	IL 130	SW QUAD	015-8660	39.54728474	-88.17745146	50	1	10			0
3	0150019	IL 130	SE QUAD	015-8660	39.54727332	-88.17732974	50	1	10			0
4	0150020	IL 130	NW QUAD	Triple Culvert N of 1100N	39.53916474	-88.17747102	62.5	-			-	0
4	0150021	IL 130	NE QUAD	Triple Culvert N of 1100N	39.53917572	-88.17734913	50	1				0
4	0150022	IL 130	SW QUAD	Triple Culvert N of 1100N	39.53898496	-88.17746682	-	-			-	0
4	0150025	IL 130	NE QUAD	N of 1100N	39.53872517	-88.17735533	-	-			-	0
4	0150026	IL 130	SE QUAD	N of 1100N	39.53857951	-88.17734939	50	-			-	0
5	0150028	IL 130	NE QUAD	Box S of 1100N	39.52997704	-88.17729266	50	1	10			25
5	0150029	IL 130	NW QUAD	Box S of 1100N	39.52999442	-88.17741333	50	1	10			25
5	0150030	IL 130	SW QUAD	Box S of 1100N	39.52940323	-88.17741280	50	1	10			25
5	0150031	IL 130	SE QUAD	Box S of 1100N	39.52938802	-88.17728725	50	1	10			25
6	0150032	IL 130	SE QUAD	Box N of Adkins Dr	39.50859377	-88.17702221	50	1	10			25
6	0150033	IL 130	NE QUAD	Box N of Adkins Dr	39.50918487	-88.17702729	50	1	10			25
6	0150034	IL 130	NW QUAD	Box N of Adkins Dr	39.50920112	-88.17714686	50	1	10			25
6	0150035	IL 130	SW QUAD	Box N of Adkins Dr	39.50861652	-88.17714348	50	1	10			25

COLES COUNTY cont.

Map Location	GIS Guardrail ID	Route	Terminal Location	Structure No/Intersection	Latitude	Longitude	Guardrail Removal (Foot)	Traffic Barrier Terminal Type 1 (Special) Tangent (Each)	Furnished Excavation (Cu Yd)	Steel Plate Beam Guardrail, Type A, 6 Foot Posts (Foot)	Traffic Barrier Terminal Type 2 (Each)	Vertical Adjustment of Guardrail (Foot)
7	0150037	IL 130	NW QUAD	Box W of Blakeman Bridge Rd	39.45931216	-88.15090048	50	1				0
7	0150039	IL 130	SE QUAD	Box W of Blakeman Bridge Rd	39.45854570	-88.14916882	50	1				25
7	0150043	IL 130	NW QUAD	015-0067	39.45816145	-88.14711461	12.5				1	25
8	0150042	IL 130	SE QUAD	015-8601	39.45670839	-88.14400669	50	1				12.5
8	0150044	IL 130	NE QUAD	015-8601, E end	39.45638433	-88.14290413	50	1				75
9	0150049	IL 130	SE QUAD	Box E of 1800E	39.45373770	-88.13781337	50	1				37.5
9	0150050	IL 130	NE QUAD	Box E of 1800E	39.45422900	-88.13838626	50	1				50
10	0150053	IL 130	N END	N of 250N, E of IL 130	39.41296131	-88.13085090	50	1				25
10	0150054	IL 130	S END	N of 250N, E of IL 130	39.41245333	-88.13138951	50	1				25
11	0150056	IL 130	S END	S of Canoe Access to Fox River, E of IL 130	39.39839690	-88.13476658	50	1				25
12	0150058	IL 130	NW QUAD	Box N of 015-8659	39.39531948	-88.13490020	50	1	10			50
12	0150059	IL 130	NE QUAD	Box N of 015-8659	39.39532124	-88.13477223	50	1	10			50
12	0150060	IL 130	SE QUAD	Box N of 015-8659	39.39476558	-88.13477265	25	1				50
13	0150061	IL 130	NW QUAD	015-8659	39.39394697	-88.13491668	50	1				12.5
13	0150062	IL 130	NE QUAD	015-8659	39.39400725	-88.13476157	50	1	10			12.5
13	0150063	IL 130	SE QUAD	015-8659	39.39348299	-88.13476418	50	1				75
13	0150064	IL 130	SW QUAD	015-8659	39.39328410	-88.13491998	50	1				0
14	0150065	IL 130	NW QUAD	015-8658	39.38978299	-88.13496231	50	1	10			25
14	0150066	IL 130	SW QUAD	015-8658	39.38923034	-88.13497429	50	1	10			25
14	0150067	IL 130	SE QUAD	015-8658	39.38933366	-88.13482882	50	1	10			25
14	0150068	IL 130	NE QUAD	015-8658	39.38988591	-88.13481929	50	1	10			25

COLES COUNTY cont.

Map Location	GIS Guardrail ID	Route	Terminal Location	Structure No/Intersection	Latitude	Longitude	Guardrail Removal (Foot)	Traffic Barrier Terminal Type 1 (Special) Tangent (Each)	Furnished Excavation (Cu Yd)	Steel Plate Beam Guardrail, Type A, 6 Foot Posts (Foot)	Traffic Barrier Terminal Type 2 (Each)	Vertical Adjustment of Guardrail (Foot)
15	0150069	IL 130	SE QUAD	Box S of 015-8658	39.38699928	-88.13488796	50	1	10			25
15	0150070	IL 130	NE QUAD	Box S of 015-8658	39.38755470	-88.13487298	50	1	10			25
15	0150071	IL 130	NW QUAD	Box S of 015-8658	39.38754251	-88.13500743	50	1	10			25
15	0150072	IL 130	SW QUAD	Box S of 015-8658	39.38702314	-88.13502078	50	1	10			25
16	0150075	IL 49	NE QUAD	015-0071	39.53311599	-87.98139979	50	1				12.5
16	0150076	IL 49	NW QUAD	015-0071	39.53324827	-87.98156866	50	1				0
17	0150078	Oakland/Ashmore Rd	SW QUAD	015-8656	39.55302352	-88.02648350	50	1				12.5
17	0150079	Oakland/Ashmore Rd	NE QUAD	015-8656	39.55377111	-88.02633718	50	1				25
17	0150080	Oakland/Ashmore Rd	NW QUAD	015-8656	39.55396059	-88.02647583	50	1				0
18	0150081	Oakland/Ashmore Rd	SE QUAD	015-8657	39.58090242	-88.02624162	50	1				25
18	0150082	Oakland/Ashmore Rd	SW QUAD	015-8657	39.58107286	-88.02638221	37.5	1				12.5
18	0150083	Oakland/Ashmore Rd	NE QUAD	015-8657	39.58153040	-88.02624289	50	1				37.5
18	0150084	Oakland/Ashmore Rd	NW QUAD	015-8657	39.58170284	-88.02638296	50	1				25
19	0150086	Oakland/Ashmore Rd	SW QUAD	Box N of 1600N	39.61115860	-88.02642365	50	1				25
20	0150089	Oakland/Ashmore Rd	SE QUAD	015-0036	39.61369926	-88.02625553	50	1				25
20	0150090	Oakland/Ashmore Rd	SW QUAD	015-0036	39.61387182	-88.02643363	62.5	1				50
21	0150093	Oakland/Ashmore Rd	NE QUAD	015-0036	39.61709284	-88.02623038	50	1				25
21	0150094	Oakland/Ashmore Rd	N END	N of 015-0036	39.61700734	-88.02642821	50	1				25
22	0150095	Madison Ave (860N)	SE QUAD	015-8619	39.50050554	-88.13191407	50	1				12.5
22	0150096	Madison Ave (860N)	SW QUAD	015-8619	39.50089253	-88.13297527	50	1				37.5
22	0150098	Madison Ave (860N)	NW QUAD	015-8619	39.50111807	-88.13409189	50	1				37.5
22	0150248	IL 16	SE QUAD, E END	015-8650	39.50029703	-88.13174712	50	1				37.5

COLES COUNTY cont.

Map Location	GIS Guardrail ID	Route	Terminal Location	Structure No/Intersection	Latitude	Longitude	Guardrail Removal (Foot)	Traffic Barrier Terminal Type 1 (Special) Tangent (Each)	Furnished Excavation (Cu Yd)	Steel Plate Beam Guardrail, Type A, 6 Foot Posts (Foot)	Traffic Barrier Terminal Type 2 (Each)	Vertical Adjustment of Guardrail (Foot)
23	0150100	Old 316/State St	SE QUAD	015-2016	39.50344325	-88.20638644	50	1				12.5
23	0150101	Old 316/State St	NW QUAD	015-2016	39.50382800	-88.20815544	50	1				25
23	0150102	Old 316/State St	SW QUAD	015-2016	39.50373249	-88.20814428	50	1				12.5
24	0150104	Old 316 (900N)	NE QUAD	015-0069	39.50604142	-88.23063956	50	1				50
24	0150106	Old 316 (900N)	SW QUAD	015-0069	39.50594100	-88.23222742	50	1	10			37.5
25	Removed											
26	0150111	Old 316 (900N)	E END	EAST of 1075E	39.50667616	-88.27048886	37.5	1				25
26	0150112	Old 316 (900N)	W END	EAST of 1075E	39.50667424	-88.27094716	50	1				37.5
26	0150113	Old 316 (900N)	NE QUAD	015-0070	39.50676382	-88.27172681	50	1	10			12.5
26	0150115	Old 316 (900N)	NW QUAD	015-0070	39.50675704	-88.27289030	25	1				25
26	0150116	Old 316 (900N)	SW QUAD	015-0070	39.50666013	-88.27288787	25	1				37.5
27	0150118	Old 316 (900N)	SE QUAD	015-8621	39.50660558	-88.28329342	50	1	10			25
27	0150119	Old 316 (900N)	NW QUAD	015-8621	39.50669473	-88.28383273	50	1	10			25
27	0150120	Old 316 (900N)	SW QUAD	015-8621	39.50659803	-88.28432386	50	1	10			25
28	0150132	100N (FAS 1667A)	NW QUAD	015-8614	39.38727966	-88.23826690	50	1				25
28	0150133	100N (FAS 1667A)	NE QUAD	015-8614	39.38730449	-88.23767753	50	1				0
28	0150134	100N (FAS 1667A)	SE QUAD	015-8614	39.38721648	-88.23779265	37.5	1				12.5
29	0150135	100N (FAS 1667A)	SW QUAD	1st box E of 1320E	39.38739324	-88.22803352	50	1				12.5
29	0150136	100N (FAS 1667A)	NW QUAD	1st box E of 1320E	39.38747112	-88.22772116	50	1				12.5
29	0150137	100N (FAS 1667A)	NE QUAD	1st box E of 1320E	39.38745893	-88.22664812	50	1	10			0
29	0150138	100N (FAS 1667A)	SE QUAD	1st box E of 1320E	39.38738137	-88.22695619	50	1	10			0

COLES COUNTY cont.

Map Location	GIS Guardrail ID	Route	Terminal Location	Structure No/Intersection	Latitude	Longitude	Guardrail Removal (Foot)	Traffic Barrier Terminal Type 1 (Special) Tangent (Each)	Furnished Excavation (Cu Yd)	Steel Plate Beam Guardrail, Type A, 6 Foot Posts (Foot)	Traffic Barrier Terminal Type 2 (Each)	Vertical Adjustment of Guardrail (Foot)
30	0150139	100N (FAS 1667A)	SW QUAD	2nd box E of 1320E	39.38734867	-88.22450929	50	1	10			0
30	0150140	100N (FAS 1667A)	NW QUAD	2nd box E of 1320E	39.38743551	-88.22444137	37.5	1				0
30	0150141	100N (FAS 1667A)	NE QUAD	2nd box E of 1320E	39.38742879	-88.22398371	50	1				25
30	0150142	100N (FAS 1667A)	SE QUAD	2nd box E of 1320E	39.38734434	-88.22405111	50	1	10			0
31	0150143	100N (FAS 1667A)	NE QUAD	015-8306	39.38729949	-88.21331000	50	1	10			0
31	0150144	100N (FAS 1667A)	SE QUAD	015-8306	39.38721547	-88.21342062	50	1	10			0
31	0150145	100N (FAS 1667A)	SW QUAD	015-8306	39.38722139	-88.21379102	37.5	1	10			25
31	0150146	100N (FAS 1667A)	NW QUAD	015-8306	39.38730590	-88.21376629	37.5	1	10			25
32	0150148	S 4th Street Rd	SW QUAD	015-0028	39.41889049	-88.20643602	50	1	10			12.5
33	0150152	S 4th Street Rd	SE QUAD	015-0027	39.46204475	-88.19376133	50	1				37.5
33	0150154	S 4th Street Rd	NW QUAD	015-0027	39.46327100	-88.19249770	50	1				75
34	0150156	S 4th Street Rd	SW QUAD	SW of University Dr	39.46531586	-88.19010414	50	1				12.5
34	0150157	S 4th Street Rd	NW QUAD	SW of University Dr	39.46651600	-88.18870497	50	1				37.5
34	0150158	S 4th Street Rd	NE QUAD	SW of University Dr	39.46641347	-88.18868400	50	1				37.5
35	0150160	Lake Paradise Rd	NE QUAD	015-8626	39.44374104	-88.42068146	50	1	10			0
35	0150161	Lake Paradise Rd	SE QUAD	015-8626	39.44300986	-88.42067692	50	1	10			25
35	0150162	Lake Paradise Rd	SW QUAD	015-8626	39.44316477	-88.42081932	50	1	10			12.5
36	0150163	Lake Paradise Rd	NE QUAD	015-8627	39.43357200	-88.42422884	50	1	10			37.5
36	0150164	Lake Paradise Rd	NW QUAD	015-8627	39.43355908	-88.42438542	50	1	10			12.5

COLES COUNTY cont.

Map Location	GIS Guardrail ID	Route	Terminal Location	Structure No/Intersection	Latitude	Longitude	Guardrail Removal (Foot)	Traffic Barrier Terminal Type 1 (Special) Tangent (Each)	Furnished Excavation (Cu Yd)	Steel Plate Beam Guardrail, Type A, 6 Foot Posts (Foot)	Traffic Barrier Terminal Type 2 (Each)	Vertical Adjustment of Guardrail (Foot)
37	0150165	Lake Paradise Rd	SW QUAD	015-8627	39.43267207	-88.42460111	50	1	10			0
37	0150167	Lake Paradise Rd	N END	S of 400N/Paradise Rd	39.43245140	-88.42460506	50	1				25
37	0150168	Lake Paradise Rd	S END	S of 400N/Paradise Rd	39.43202898	-88.42462105	50	1				37.5
37	0150169	Lake Paradise Rd	N END	E of Cemetery	39.43198528	-88.42462059	50	1				37.5
38	Removed											
39	0150178	Lake Paradise Rd (250N)	SW QUAD	015-8629	39.41020447	-88.42975933	50	1	10			0
39	0150179	Lake Paradise Rd (250N)	NW QUAD	015-8629	39.41031562	-88.42971360	50	1	10			12.5
40	0150183	Lake Paradise Rd (150E)	NW QUAD	N Side of 015-0034	39.39793041	-88.44374606	50	1	10			25
40	0150184	Lake Paradise Rd (150E)	NE QUAD	N Side of 015-0034	39.39793358	-88.44362155	50	1	10			25
40	0150185	Lake Paradise Rd (150E)	SE QUAD	N Side of 015-0034	39.39751128	-88.44362570	12.5				1	50
40	0150186	Lake Paradise Rd (150E)	SW QUAD	N Side of 015-0034	39.39743890	-88.44373595	12.5				1	25
40	0150188	Lake Paradise Rd (150E)	NW QUAD	S Side of 015-0034	39.39707582	-88.44373529	12.5				1	37.5
40	0150189	Lake Paradise Rd (150E)	NE QUAD	S Side of 015-0034	39.39714714	-88.44362356	12.5				1	37.5
41	0150190	Lake Paradise Rd (150E)	SE QUAD	S Side of 015-0034	39.39634835	-88.44361020	50	1				87.5
41	0150191	Lake Paradise Rd (150E)	S END, W Side	Just S of 015-0034	39.39622783	-88.44373197	37.5	-			-	37.5
41	0150192	Lake Paradise Rd (150E)	N END, W Side	Just S of 015-0034	39.39634212	-88.44373641	-	-			-	37.5
42	0150197	US 45	NW QUAD	015-8664	39.38860601	-88.37927323	50	1	10			12.5
43	0150203	US 45 NB	NE QUAD	015-0002	39.42691296	-88.37795549	12.5				1	12.5
43	0150205	US 45 SB	SW QUAD	015-0001	39.42599031	-88.37827485	12.5				1	12.5
43	0153002	I 57 NB	NE QUAD	015-0001	39.42683822	-88.37716583	12.5				1	12.5
43	0153049	I 57 SB	SW QUAD	015-0002	39.42599423	-88.37916008	12.5				1	25

COLES COUNTY cont.

Map Location	GIS Guardrail ID	Route	Terminal Location	Structure No/Intersection	Latitude	Longitude	Guardrail Removal (Foot)	Traffic Barrier Terminal Type 1 (Special) Tangent (Each)	Furnished Excavation (Cu Yd)	Steel Plate Beam Guardrail, Type A, 6 Foot Posts (Foot)	Traffic Barrier Terminal Type 2 (Each)	Vertical Adjustment of Guardrail (Foot)
44	0150207	US 45	NE QUAD	015-0024	39.50886778	-88.36432954	25	1				37.5
44	0150209	US 45	SW QUAD	015-0024	39.50843366	-88.36466526	25	1				50
45	0150212	US 45	NE QUAD	015-2018	39.54682358	-88.34639650	50	1	10			0
45	0150213	US 45	NW QUAD	015-2018	39.54711168	-88.34639456	50	1	10			0
46	0150214	US 45	SE QUAD	015-0022	39.59867372	-88.32432009	50	1				25
46	0150215	US 45	SW QUAD	015-0022	39.59901506	-88.32445988	50	1				12.5
46	0150217	US 45	NW QUAD	015-0022	39.60047627	-88.32446322	50	1				0
47	0150222	IL 121	SW QUAD	015-2013	39.50956705	-88.44956539	50	1				25
47	0150223	IL 121	NW QUAD	015-2013	39.50955384	-88.44924462	50	1				25
47	0150224	IL 121	SE QUAD	015-2013	39.50891158	-88.44839831	50	1				37.5
47	0150225	IL 121	NE QUAD	015-2013	39.50889807	-88.44807428	50	1				50
48	0150226	IL 121	W END	SW Quad IL 121 & Dole RD	39.50114537	-88.43459153	50	1				25
48	0150228	IL 121	W END	SE Quad IL 121 & Dole RD @ RR Tracks	39.50080297	-88.43420311	25			12.5	1	0
48	0150229	IL 121	E END	SE Quad IL 121 & Dole RD	39.50073587	-88.43386187	50	1				0
49	0150230	IL 121	SW QUAD	015-8637	39.49418194	-88.42221702	50	1				25
49	0150231	IL 121	NW QUAD	015-8637	39.49428675	-88.42209745	50	1				0
49	0150232	IL 121	SE QUAD	015-8637	39.49363204	-88.42124042	50	1				37.5
49	0150233	IL 121	NE QUAD	015-8637	39.49369608	-88.42104970	50	1				25
50	0150234	IL 16	NE QUAD	015-0021	39.54234789	-87.98816576	50	1				50
50	0150235	IL 16	SE QUAD	015-0021	39.54220314	-87.98822579	50	1				37.5
50	0150236	IL 16	SW QUAD	015-0021	39.54190850	-87.98943973	50	1				25
50	0150237	IL 16	NW QUAD	015-0021	39.54204837	-87.98938005	50	1				37.5

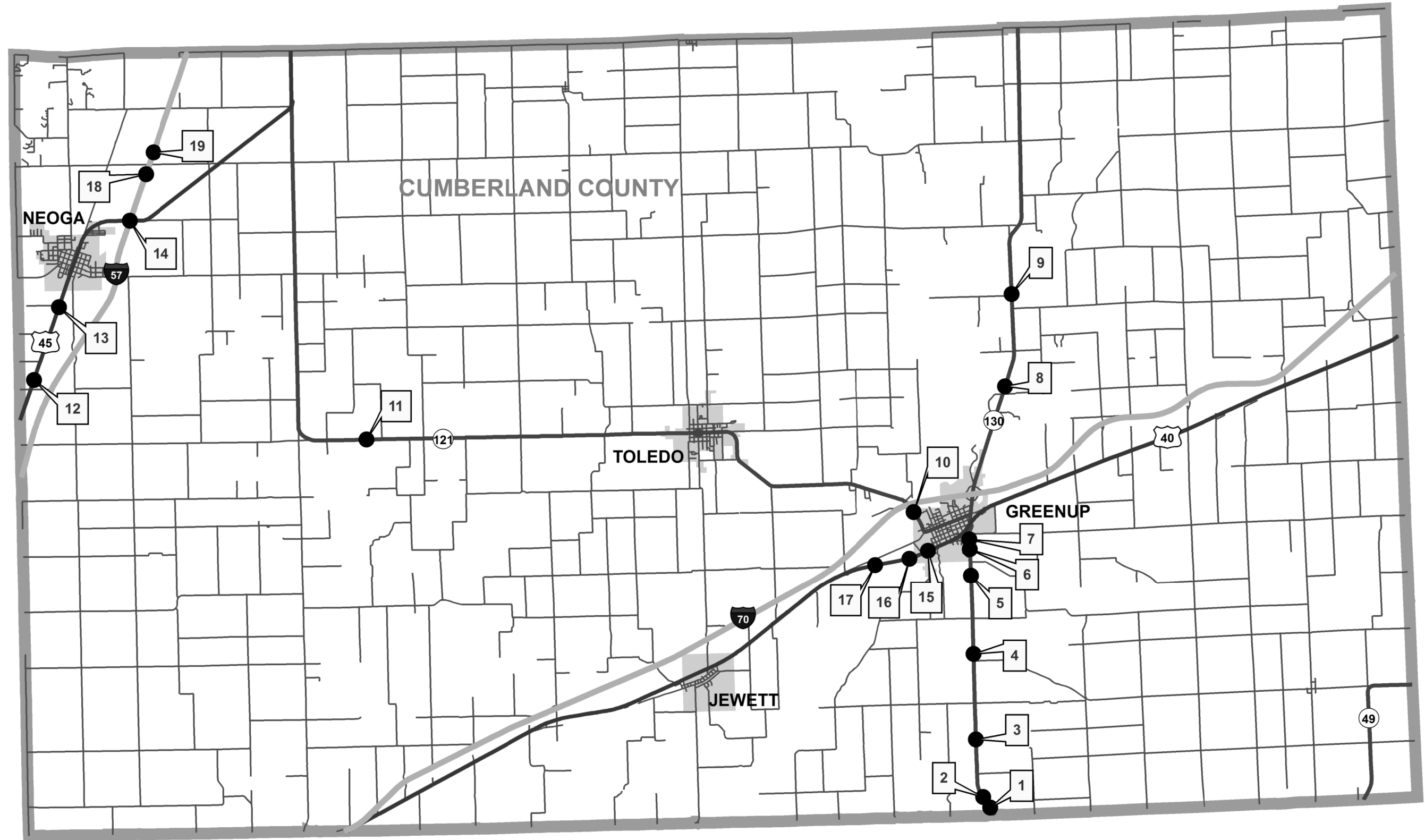
COLES COUNTY cont.

Map Location	GIS Guardrail ID	Route	Terminal Location	Structure No/Intersection	Latitude	Longitude	Guardrail Removal (Foot)	Traffic Barrier Terminal Type 1 (Special) Tangent (Each)	Furnished Excavation (Cu Yd)	Steel Plate Beam Guardrail, Type A, 6 Foot Posts (Foot)	Traffic Barrier Terminal Type 2 (Each)	Vertical Adjustment of Guardrail (Foot)
51	0150238	IL 16	NE QUAD	015-0020	39.53945100	-88.00001080	50	1	10			12.5
51	0150239	IL 16	SE QUAD	015-0020	39.53932402	-88.00000685	50	1				37.5
51	0150240	IL 16	SW QUAD	015-0020	39.53906109	-88.00108317	50	1				50
51	0150241	IL 16	NW QUAD	015-0020	39.53917529	-88.00113443	50	1	10			37.5
52	0150254	IL 16	SW QUAD	015-0017	39.48423675	-88.20731939	12.5				1	25
52	0150256	IL 16	SW QUAD	015-0016	39.48422119	-88.20934719	12.5				1	12.5
52	0150302	IL 16	SE QUAD	015-0018	39.48406993	-88.20594222	12.5				1	62.5
52	0150303	IL 16	NE QUAD	015-0018	39.48416867	-88.20600617	12.5				1	62.5
53	0150257	IL 16	NW QUAD	015-0016	39.48432002	-88.21434927	12.5				1	12.5
53	0150258	IL 16	NE QUAD	015-8646	39.48430586	-88.21470550	50	1				25
53	0150299	IL 16	SE QUAD	015-8646	39.48398481	-88.21477351	12.5				1	50
54	0150259	IL 16	NW QUAD	015-8646	39.48429798	-88.21902374	25			12.5	1	25
55	0150268	IL 16	NE QUAD	Sign Base E of I57 Ramps, Exit 190	39.48462529	-88.31689200	50	1				0
56	0150278	IL 16	SW QUAD	Sign Base W of I57 Ramps, Exit 190	39.48415364	-88.32687499	50	1				12.5
56	0150279	IL 16	SE QUAD	Sign Base W of I57 Ramps, Exit 190	39.48413635	-88.32637675	25			12.5	1	12.5
56	0150280	IL 16	NE QUAD	Sign Base W of I57 Ramps, Exit 190	39.48433375	-88.32650975	12.5				1	12.5
57	0150282	I-57 NB OFF Ramp to IL 16 WB	NE QUAD	015-0005, NB Off Ramp, Exit 190	39.48588431	-88.32025590	12.5				1	12.5
57	0150283	I-57 NB OFF Ramp to IL 16 WB	NE QUAD	015-0005, NB Off Ramp, Exit 190	39.48555424	-88.31986080	12.5				1	12.5

COLES COUNTY cont.

Map Location	GIS Guardrail ID	Route	Terminal Location	Structure No/Intersection	Latitude	Longitude	Guardrail Removal (Foot)	Traffic Barrier Terminal Type 1 (Special) Tangent (Each)	Furnished Excavation (Cu Yd)	Steel Plate Beam Guardrail, Type A, 6 Foot Posts (Foot)	Traffic Barrier Terminal Type 2 (Each)	Vertical Adjustment of Guardrail (Foot)
58	0150284	I-57 SB ON Ramp from IL 16 WB	N END	On Ramp I-57 SB, Exit 190	39.48581798	-88.32309695	50	1	10			12.5
58	0150285	I-57 SB ON Ramp from IL 16 WB	N END	On Ramp I-57 SB, Exit 190	39.48555176	-88.32230967	25			12.5	1	12.5
58	0150286	I-57 SB ON Ramp from IL 16 WB	N END	On Ramp I-57 SB, Exit 190	39.48549968	-88.32244321	50	1	10			12.5
58	0153040	I 57 SB	S END, NW QUAD	015-0006, N of IL 16, Exit 190	39.48532520	-88.32211478	37.5			25	1	12.5
59	0150287	I-57 SB OFF Ramp to IL 16 EB	Beginning of Ramp	Exit 190 Ramp to IL 16 East	39.48345824	-88.32209733	12.5				1	12.5
60	0150288	I-57 SB OFF Ramp to IL 16 WB	N END	Exit 190 Ramp to IL 16 West	39.48688594	-88.32223709	37.5	1				0
60	0150289	I-57 SB OFF Ramp to IL 16 WB	S END	Exit 190 Ramp to IL 16 West	39.48593654	-88.32321905	25			12.5	1	0
60	0150290	I-57 SB OFF Ramp to IL 16 WB	S END	EXIT 190 RAMP to IL 16 WEST	39.48549299	-88.32399045	12.5				1	12.5
61	0150292	IL 16	S END, W SIDE	NB On Ramp from WB IL 16, Exit 190	39.48629093	-88.32077243	50	1	10			12.5
61	0150293	IL 16	N END, W SIDE	NB On Ramp from WB IL 16, Exit 190	39.48694774	-88.32163160	25			12.5	1	12.5
61	0153010	I 57 NB	NE QUAD	015-0005, @ gore of WB IL 16 On ramp	39.48707310	-88.32168316	25			12.5	1	25
62	0153003	I 57 NB	N END	NB I-57 @ M.P. 185.6	39.43971051	-88.35777357	12.5				1	12.5
62	0153047	I 57 SB	S END	N of 015-0029 @ M.P. 185.6	39.44007125	-88.35797598	12.5				1	12.5
63	0153004	I 57 NB	N END	I-57 @ M.P. 186.1	39.44391916	-88.35143251	12.5				1	12.5
63	0153005	I 57 NB	NW END	015-0047	39.44465191	-88.35055319	12.5				1	12.5
63	0153045	I 57 SB	SE END	015-0047	39.44487291	-88.35052615	12.5				1	12.5
63	0153046	I 57 SB	S END	S of 015-0047 @ M.P. 186.1	39.44414205	-88.35184708	12.5				1	12.5
64	0153006	I 57 NB	N END	N of 015-0047 @ M.P. 186.3	39.44607669	-88.34818269	12.5				1	12.5
64	0153044	I 57 SB	S END	N of 015-0047 @ M.P. 186.3	39.44646773	-88.34834013	12.5				1	12.5

CUMBERLAND COUNTY LOCATION MAP



TERMINAL LOCATIONS SHOWN ARE APPROXIMATE AND ARE FOR GENERAL INFORMATION FOR CONSTRUCTION.

FILE NAME =	USER NAME = steffenk	DESIGNED -	REVISED -
pw:\IL\084EBIDINTEG.illinois.gov\PIWID\Documents\DOT Offices\District 7\Projects\74783\DRAWING\CAD\sheets\D774783-sht-schedule		DRAWN -	REVISED -
Default	PLOT SCALE = 100.0000' / in.	CHECKED -	REVISED -
	PLOT DATE = 1/30/2017	DATE -	REVISED -

**STATE OF ILLINOIS
DEPARTMENT OF TRANSPORTATION**

CUMBERLAND COUNTY LOCATION MAP

SCALE: SHEET OF SHEETS STA. TO STA.

F.A. RTE.	SECTION	COUNTY	TOTAL SHEETS	SHEET NO.
			18	15
			CONTRACT NO. 74783	

CUMBERLAND COUNTY

Map Location	GIS Guardrail ID	Route	Terminal Location	Structure No/Intersection	Latitude	Longitude	Guardrail Removal (Foot)	Traffic Barrier Terminal Type 1 (Special) Tangent (Each)	Furnished Excavation (Cu Yd)	Steel Plate Beam Guardrail, Type A, 6 Foot Posts (Foot)	Traffic Barrier Terminal Type 2 (Each)	Vertical Adjustment of Guardrail (Foot)
1	0180041	IL 130	SE QUAD	Box N of Jasper Co Ln	39.17363798	-88.14998335	50	1				12.5
1	0180042	IL 130	NE QUAD	Box N of Jasper Co Ln	39.17399963	-88.15026390	25	1				0
1	0180043	IL 130	NW QUAD	Box N of Jasper Co Ln	39.17380545	-88.15026965	37.5	1				12.5
1	0180044	IL 130	SW QUAD	Box N of Jasper Co Ln	39.17338649	-88.14994289	50	1				25
2	0180045	IL 130	S END	S of 018-8627	39.17508552	-88.15110847	50	1				12.5
2	0180046	IL 130	N END	S of 018-8627	39.17530033	-88.15127344	37.5	1				25
2	0180047	IL 130	SE QUAD	018-8627	39.17647132	-88.15218817	50	1				12.5
2	0180048	IL 130	SW QUAD	018-8627	39.17648284	-88.15235106	37.5	1				12.5
2	0180049	IL 130	NE QUAD	018-8627	39.17756571	-88.15304157	50	1				0
2	0180050	IL 130	NW QUAD	018-8627	39.17751700	-88.15315704	50	1				37.5
3	0180056	IL 130	N END	N of 018-0027	39.19147647	-88.15442295	50	1				25
4	0180058	IL 130	NE QUAD	018-8308	39.21390097	-88.15448141	50	1				25
4	0180059	IL 130	NW QUAD	018-8308	39.21391885	-88.15462367	50	1				37.5
4	0180060	IL 130	SW QUAD	018-8308	39.21336134	-88.15461675	50	1				50
5	0180061	IL 130	SE QUAD	Box S of 440N	39.23387864	-88.15474369	50	1				37.5
5	0180063	IL 130	NW QUAD	Box S of 440N	39.23441748	-88.15488972	50	1				37.5
5	0180064	IL 130	NE QUAD	Box S of 440N	39.23429876	-88.15475128	50	1				37.5
6	0180066	IL 130	SW QUAD	018-0026	39.24099978	-88.15505241	50	1				25
7	0180067	IL 130	NE QUAD	018-0026	39.24357727	-88.15491612	50	1				0
7	0180068	IL 130	NW QUAD	018-0026	39.24355004	-88.15510213	50	1				0
8	0180083	IL 130	SE QUAD	Box N of Sportsmans Club Rd	39.28284439	-88.14209726	37.5	1				25
8	0180084	IL 130	SW QUAD	Box N of Sportsmans Club Rd	39.28299350	-88.14217664	50	1				25
8	0180085	IL 130	NW QUAD	Box N of Sportsmans Club Rd	39.28351770	-88.14194527	50	1				25
8	0180086	IL 130	NE QUAD	Box N of Sportsmans Club Rd	39.28336944	-88.14186909	50	1				25

CUMBERLAND COUNTY cont.

Map Location	GIS Guardrail ID	Route	Terminal Location	Structure No/Intersection	Latitude	Longitude	Guardrail Removal (Foot)	Traffic Barrier Terminal Type 1 (Special) Tangent (Each)	Furnished Excavation (Cu Yd)	Steel Plate Beam Guardrail, Type A, 6 Foot Posts (Foot)	Traffic Barrier Terminal Type 2 (Each)	Vertical Adjustment of Guardrail (Foot)
9	0180087	IL 130	SE QUAD	018-0058	39.30625092	-88.13906854	50	1				25
9	0180088	IL 130	SW QUAD	018-0058	39.30631412	-88.13924944	50	1				37.5
9	0180089	IL 130	NW QUAD	018-0058	39.30788851	-88.13928276	50	1				37.5
9	0180090	IL 130	NE QUAD	018-0058	39.30793224	-88.13912389	37.5	1				12.5
10	0180125	IL 121	SE QUAD	018-0019	39.25005460	-88.17260157	50	1				37.5
10	0180126	IL 121	SW QUAD	018-0019	39.25019572	-88.17289686	50	1				37.5
10	0180127	IL 121	NE QUAD	018-0019	39.25180925	-88.17399377	50	1				25
10	0180128	IL 121	NW QUAD	018-0019	39.25197892	-88.17430838	50	1				25
11	0180145	IL 121	NE QUAD	018-0028	39.27277780	-88.35474506	50	1				25
11	0180146	IL 121	SE QUAD	018-0028	39.27265993	-88.35518077	50	1				50
11	0180147	IL 121	NW QUAD	018-0028	39.27277806	-88.35618453	50	1				37.5
11	0180148	IL 121	SW QUAD	018-0028	39.27267270	-88.35623183	50	1				37.5
12	0180173	US 45	SE QUAD	018-8608	39.28964115	-88.46627404	50	1	10			0
12	0180174	US 45	NE QUAD	018-8608	39.29022533	-88.46601101	50	1	10			25
13	0180177	US 45	SE QUAD	018-8610	39.30850256	-88.45746066	50	1				0
13	0180178	US 45	NE QUAD	018-8610	39.30892878	-88.45727415	50	1	10			25
14	0180179	US 45	SW QUAD	018-0003	39.33078668	-88.43400295	50	1				12.5
14	0180180	US 45	NW QUAD	018-0003	39.33091999	-88.43368907	25	1				12.5
14	0180181	US 45	NE QUAD	018-0004	39.33092612	-88.43279279	50	1				12.5
14	0180182	US 45	SE QUAD	018-0004	39.33078923	-88.43310671	25	1				37.5
15	0180304	US 40	NE QUAD	018-0010	39.24116003	-88.16802804	50	1				37.5
15	0180305	US 40	SE QUAD	018-0010	39.24097364	-88.16821453	50	1				37.5
15	0180306	US 40	NW QUAD	018-0010	39.24069893	-88.16945330	50	1				25
15	0180308	US 40	SE QUAD	018-0009	39.24037336	-88.17005920	50	1				25

CUMBERLAND COUNTY cont.

Map Location	GIS Guardrail ID	Route	Terminal Location	Structure No/Intersection	Latitude	Longitude	Guardrail Removal (Foot)	Traffic Barrier Terminal Type 1 (Special) Tangent (Each)	Furnished Excavation (Cu Yd)	Steel Plate Beam Guardrail, Type A, 6 Foot Posts (Foot)	Traffic Barrier Terminal Type 2 (Each)	Vertical Adjustment of Guardrail (Foot)	
16	0180311	US 40	SW QUAD	018-0009	39.23885330	-88.17520112	50	1				12.5	
17	0180312	US 40	NE QUAD	018-0008	39.23764677	-88.18474294	50	1				25	
17	0180313	US 40	SE QUAD	018-0008	39.23748056	-88.18504467	50	1				12.5	
17	0180314	US 40	NW QUAD	018-0008	39.23721303	-88.18795463	50	1				50	
17	0180315	US 40	SW QUAD	018-0008	39.23702381	-88.18847157	50	1				37.5	
18	0183007	I 57 NB	N END, NB	018-8607	39.34283271	-88.42753413	12.5				1	37.5	
18	0183014	I 57 SB	S END, SB	018-8607	39.34305344	-88.42795015	12.5				1	37.5	
19	0183008	I 57 NB	N END, NB	018-8600	39.34848802	-88.42488905	12.5				1	50	
19	0183013	I 57 SB	S END, SB	018-8600	39.34806103	-88.42560583	12.5				1	50	
Cumberland							TOTALS:	2563	53	30	0	4	1475.0