

STATE OF ILLINOIS  
DEPARTMENT OF TRANSPORTATION

F.A.U. RTE.	SECTION	COUNTY	TOTAL SHEETS	SHEET NO.
2503	(44, 48, 46EXT.&52) RS-4	KANE	56	1

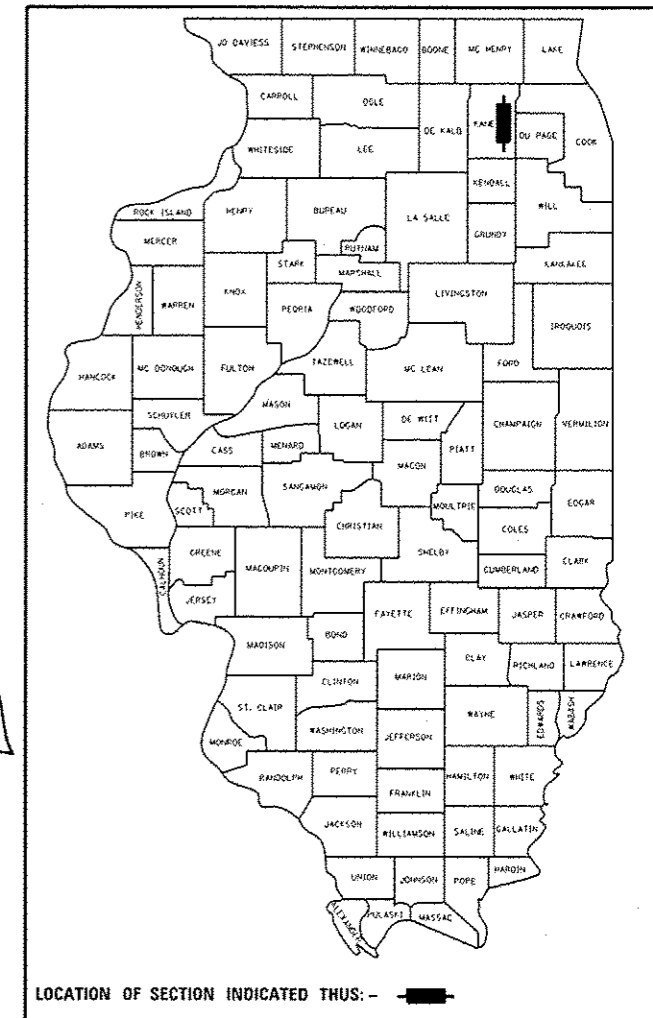
\* 56 + 17 = 73 TOTAL PAGES

D-91-174-16

# PROPOSED HIGHWAY PLANS

F.A.U. ROUTE 2503: IL ROUTE 25  
WILSON ST. TO N. OF STATE AVENUE  
SECTION (44, 48, 46EXT.&52) RS-4  
PROJECT: STP-2503(019)  
RESURFACING (3P), PEDESTRIAN RAMPS  
KANE COUNTY

THE IMPROVEMENT IS LOCATED IN  
THE CITIES OF BATAVIA, GENEVA, AND  
ST. CHARLES



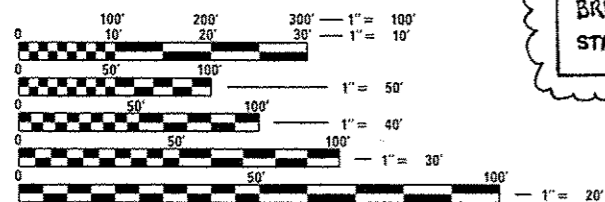
TRAFFIC DATA:  
2016 ADT = 9,350  
POSTED SPEED LIMIT = 30-50 MPH

C-91-174-16

IMPROVEMENT ENDS

STA. 276+84

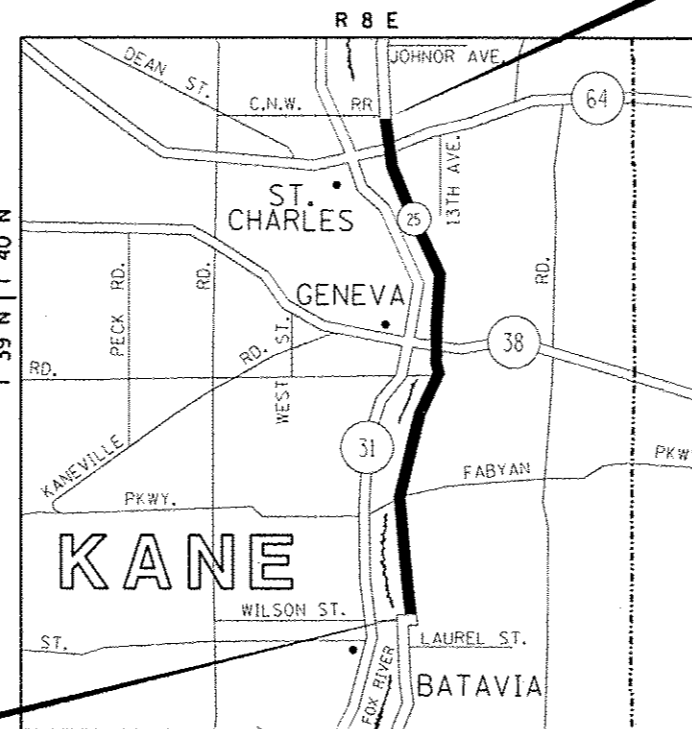
BRIDGE PCC SURFACE OMISSION:  
STA. 128+88.5 TO STA. 131+47  
IL 38 INTERSECTION OMISSION:  
STA. 149+69 TO STA. 151+30  
ROADWAY PCC SURFACE OMISSION:  
STA. 255+68.5 TO STA. 256+83.3  
BRIDGE PCC SURFACE OMISSION:  
STA. 264+01.5 TO STA. 265+29



FULL SIZE PLANS HAVE BEEN PREPARED USING STANDARD  
ENGINEERING SCALES. REDUCED SIZED PLANS WILL NOT  
CONFORM TO STANDARD SCALES. IN MAKING MEASUREMENTS  
ON REDUCED PLANS, THE ABOVE SCALES MAY BE USED.

J.U.L.I.E.  
JOINT UTILITY LOCATION INFORMATION FOR EXCAVATION  
1-800-892-0123  
OR 811

IMPROVEMENT BEGINS  
STA. 10+28



BATAVIA, GENEVA, AND ST. CHARLES TOWNSHIPS

GROSS LENGTH = 26,656 FT. = 5.05 MILES  
NET LENGTH = 25,994.2 FT. = 4.92 MILES

PROJECT ENGINEER KARI SMITH (847) 705-4437  
PROJECT MANAGER FAWAD AQUEEL (847) 705-4247

CONTRACT NO. 62B89

STATE OF ILLINOIS  
DEPARTMENT OF TRANSPORTATION  
SUBMITTED February 16, 2017  
Regional Engineer  
March 24, 2017  
Engineer of Design and Environment  
March 24, 2017  
Director of Program Development

PRINTED BY THE AUTHORITY  
OF THE STATE OF ILLINOIS

Rev 4-13-17

**INDEX OF SHEETS**

**STATE HIGHWAY STANDARDS**

**GENERAL NOTES**

SHEET NO.	DESCRIPTION
1	TITLE SHEET
2	INDEX OF SHEETS, HIGHWAY STANDARDS, AND GENERAL NOTES
3 - 5	SUMMARY OF QUANTITIES
6 - 7	TYPICAL SECTIONS
8 - 16A	ROADWAY AND PAVEMENT MARKING PLANS
17 - 400	PROPOSED SIDEWALK RAMP DETAILS
41 - 44	DETECTOR LOOP REPLACEMENT PLANS
45	DETAILS FOR FRAMES AND LIDS ADJUSTMENT WITH MILLING (BD-08)
46	PAVEMENT PATCHING FOR HMA SURFACED PAVEMENT (BD-22)
47	CURB OR CURB AND GUTTER REMOVAL AND REPLACEMENT (BD-24)
48	BUTT JOINT AND HMA TAPER DETAILS (BD-32)
49	TRAFFIC CONTROL AND PROTECTION FOR SIDE ROADS, INTERSECTIONS, AND DRIVEWAYS (TC-10)
50	TYPICAL APPLICATIONS RAISED REFLECTIVE PAVEMENT MARKERS (SNOW-PLOW RESISTANT) (TC-11)
51	DISTRICT ONE TYPICAL PAVEMENT MARKINGS (TC-13)
52	TRAFFIC CONTROL AND PROTECTION AT TURN BAYS (TO REMAIN OPEN TO TRAFFIC) (TC-14)
53	SHORT TERM PAVEMENT MARKING LETTERS AND SYMBOLS (TC-16)
54	ARTERIAL ROAD INFORMATION SIGN (TC-22)
55	DISTRICT ONE STANDARD TRAFFIC SIGNAL DESIGN DETAIL, SHEET 2 OF 7 (TS-05)
56	DISTRICT ONE DETECTOR LOOP INSTALLATION DETAILS FOR ROADWAY RESURFACING (TS-07)

STANDARD NO.	DESCRIPTION
000001-06	STANDARD SYMBOLS, ABBREVIATIONS AND PATTERNS
424001-09	PERPENDICULAR CURB RAMPS FOR SIDEWALKS
424006-02	DIAGONAL CURB RAMPS FOR SIDEWALKS
424011-03	CORNER PARALLEL CURB RAMPS FOR SIDEWALKS
442201-03	CLASS C AND D PATCHES
604001-04	FRAMES AND LIDS TYPE 1
604091-03	FRAME AND GRATE TYPE 24
606001-06	CONCRETE CURB TYPE B AND COMBINATION CONCRETE CURB AND GUTTER
701011-04	OFF-RD MOVING OPERATIONS, 2L, 2W, DAY ONLY
701201-04	LANE CLOSURE, 2L, 2W, DAY ONLY, FOR SPEEDS ≥ 45 MPH
701301-04	LANE CLOSURE, 2L, 2W, SHORT TIME OPERATIONS
701306-03	LANE CLOSURE, 2L, 2W, SLOW MOVING OPERATIONS DAY ONLY, FOR SPEEDS ≥ 45 MPH
701311-03	LANE CLOSURE 2L, 2W MOVING OPERATIONS - DAY ONLY
701336-06	LANE CLOSURE, 2L, 2W, WORK AREAS IN SERIES, FOR SPEEDS ≥ 45 MPH
701427-05	LANE CLOSURE, MULTILANE, INTERMITTENT OR MOVING OPER., FOR SPEEDS ≤ 40 MPH
701501-06	URBAN LANE CLOSURE, 2L, 2W, UNDIVIDED
701502-07	URBAN LANE CLOSURE, 2L, 2W, WITH BIDIRECTIONAL LEFT TURN LANE
701601-09	URBAN LANE CLOSURE, MULTILANE, 1W OR 2W WITH NONTRAVERSABLE MEDIAN
701606-10	URBAN SINGLE LANE CLOSURE, MULTILANE, 2W WITH MOUNTABLE MEDIAN
701701-10	URBAN LANE CLOSURE, MULTILANE INTERSECTION
701801-06	SIDEWALK, CORNER OR CROSSWALK CLOSURE
701901-06	TRAFFIC CONTROL DEVICES
814001-03	HANDHOLES

- BEFORE STARTING ANY EXCAVATION, THE CONTRACTOR SHALL CALL "JULIE" AT (800) 892-0123 OR 811 FOR FIELD LOCATIONS OF BURIED ELECTRIC, TELEPHONE, AND GAS FACILITIES. (48 HOUR NOTIFICATION REQUIRED)
- THE CONTRACTOR SHALL COORDINATE CONSTRUCTION ACTIVITIES WITH UTILITY COMPANIES AND THE CITIES OF BATAVIA, GENEVA, AND ST. CHARLES.
- FRAMES AND GRATES ADJUSTMENT OF PRIVATE UTILITIES WITHIN THE LIMITS OF THE IMPROVEMENTS SHALL BE DONE BY THEIR RESPECTIVE OWNERS AND ARE NOT PART OF THIS CONTRACT.
- THE CONTRACTOR SHALL CONTACT DISTRICT ONE ARTERIAL TRAFFIC CONTROL SUPERVISOR AT (847) 705-4470 A MINIMUM OF 72 HOURS IN ADVANCE OF BEGINNING WORK.
- THE CONTRACTOR WILL NOT BE ALLOWED TO SET UP A YARD OR FIELD OFFICE ON STATE PROPERTY WITHOUT THE WRITTEN PERMISSION OF THE DEPARTMENT.
- UNLESS OTHER CONDITIONS WARRANT EXTENDED LANE CLOSURE AS DETERMINED AND APPROVED IN WRITING BY THE RESIDENT ENGINEER OR AS PROVIDED FOR IN THE CONTRACT SPECIFICATIONS, OVERNIGHT CLOSURES SHALL NOT BE ALLOWED FOR REHABILITATION PROJECTS INVOLVING DAYTIME MILLING AND RESURFACING OPERATIONS AND CLASS D PATCHING.
- IT SHALL BE THE CONTRACTOR'S RESPONSIBILITY TO VERIFY ALL DIMENSIONS AND CONDITIONS EXISTING IN THE FIELD PRIOR TO CONSTRUCTION AND ORDERING OF MATERIALS.
- DO NOT SCALE PLANS FOR CONSTRUCTION DIMENSIONS.
- THE CONTRACTOR SHALL BE REQUIRED TO PROVIDE ACCESS TO ABUTTING PROPERTY AT ALL TIMES DURING THE CONSTRUCTION OF THIS PROJECT.
- ALL PAVEMENT PATCHING LOCATIONS WILL BE DETERMINED IN THE FIELD BY THE RESIDENT ENGINEER/TECHNICIAN.
- DRAINAGE ADJUSTMENT OR RECONSTRUCTION LOCATIONS WILL BE DETERMINED IN THE FIELD BY THE ENGINEER.
- FOR FRAMES AND LIDS ADJUSTMENT WITHOUT MILLING, REUSE EXISTING FRAME AND LID UNLESS OTHERWISE SPECIFIED IN THE PLANS.
- WHEN MILLED PAVEMENT IS OPEN TO TRAFFIC, THE MAXIMUM GRADE DIFFERENTIAL BETWEEN PASSES OF THE MILLING MACHINE SHALL NOT EXCEED 1/2 INCHES WHERE THE SPEED LIMIT IS 45 MPH OR LESS, AND 1 INCH WHERE THE SPEED LIMIT IS OVER 45 MPH. WITH WRITTEN APPROVAL FROM THE RESIDENT ENGINEER, A MAXIMUM GRADE DIFFERENTIAL OF 3 INCHES MAY BE ALLOWED IF THE EDGE OF THE MILLING IS SLOPED A MINIMUM OF 1v:3H.
- BUTT JOINTS WILL BE INSTALLED AT THE ENDS OF RESURFACING (WHERE RESURFACING MEETS EXISTING PAVEMENT) IN ACCORDANCE WITH THE "BUTT JOINT AND HMA TAPER DETAILS" SHEET INCLUDED IN THE PLANS, UNLESS OTHERWISE SPECIFIED.
- THE RESIDENT ENGINEER SHALL CONTACT DON CHIARUGI, AREA TRAFFIC FIELD ENGINEER VIA E-MAIL AT don.chiarugi@illinois.gov, A MINIMUM OF 2 WEEKS PRIOR TO PLACEMENT OF PERMANENT PAVEMENT MARKINGS.
- BEFORE BEGINNING ANY WORK, THE CONTRACTOR SHALL RETAIN AND RECORD FOR FUTURE REFERENCE, ALL EXISTING PAVEMENT MARKING LINES (AND RAISED REFLECTIVE PAVEMENT MARKERS) IN ORDER THAT THESE LOCATIONS CAN BE RE-ESTABLISHED FOR STRIPING. EXACT LOCATIONS OF ALL PAVEMENT MARKINGS SHALL BE AS DIRECTED BY THE RESIDENT ENGINEER.
- ANY PAVEMENT MARKINGS AND RAISED REFLECTIVE PAVEMENT MARKERS OBLITERATED BY MILLING AND RESURFACING OPERATIONS ON SIDE STREETS AND ENTRANCES SHALL BE REPLACED AND PAID FOR IN KIND.
- PAVEMENT MARKING TAPE, TYPE III SHALL BE USED FOR SHORT TERM PAVEMENT MARKINGS ON ALL FINAL SURFACES.
- THE CONTRACTOR SHALL BE RESPONSIBLE FOR THE REPLACEMENT OF ANY DETECTOR LOOPS DAMAGED DURING CONSTRUCTION.
- THE CONTRACTOR SHALL MAINTAIN PEDESTRIAN ACCESS AT ALL TIMES DURING CONSTRUCTION.
- LOCATION OF COMBINATION CONCRETE CURB AND GUTTER REMOVAL AND REPLACEMENT (OR COMBINATION CURB AND GUTTER (THE TYPE SPECIFIED IN THE PLANS)), WILL BE DETERMINED IN THE FIELD BY THE RESIDENT ENGINEER.

FILE NAME :	USER NAME : paragonal	DESIGNED -	REVISED -  AP 4/12/17	<b>STATE OF ILLINOIS DEPARTMENT OF TRANSPORTATION</b>	<b>ILLINOIS ROUTE 25 WILSON ST. TO N. OF STATE AVE.</b>		F.A.U. RTE.	SECTION	COUNTY	TOTAL SHEETS	SHEET NO.	
p:\j\084E6ID\INTEG\illinois.gov\PIDOT\Documents\DOT Offices\District 1\Projects\DI17\DRAWING\Design\DI17416-shr-plan.dgn		CHECKED -	REVISED -		2503	144,48,46EXT.&52\RS-4	KANE	56	2			
Default	PLOT SCALE = 100.0000 ' / in	DATE -	REVISED -		SCALE: NONE	SHEET	OF	SHEETS	STA.	TO STA.	[ILLINOIS] FED. AID PROJECT	
	PLOT DATE = 4/12/2017				Rev 4-13-17							

SUMMARY OF QUANTITIES			CONSTRUCTION TYPE CODE	
CODE NO	ITEM	UNIT	TOTAL QUANTITIES	80% FED 20% STATE 0005
20200100	EARTH EXCAVATION	CU YD	205	205
21101615	TOPSOIL FURNISH AND PLACE. 4"	SO YD	741	741
25000400	NITROGEN FERTILIZER NUTRIENT	POUND	9	9
25000500	PHOSPHORUS FERTILIZER NUTRIENT	POUND	9	9
25000600	POTASSIUM FERTILIZER NUTRIENT	POUND	9	9
25200110	SODDING, SALT TOLERANT	SO YD	741	741
25200200	SUPPLEMENTAL WATERING	UNIT	5	5
40600290	BITUMINOUS MATERIALS (TACK COAT)	POUND	59547	59547
40600400	MIXTURE FOR CRACKS, JOINTS, AND FLANGEWAYS	TON	133	133
40600827	POLYMERIZED LEVELING BINDER (MACHINE METHOD), 1L-4.75, N50	TON	3706	3706
40600982	HOT-MIX ASPHALT SURFACE REMOVAL - BUTT JOINT	SO YD	1013	1013
40603340	HOT-MIX ASPHALT SURFACE COURSE, MIX "D", N7D	TON	7411	7411
42001300	PROTECTIVE COAT	SO YD	2887	2887

SUMMARY OF QUANTITIES			CONSTRUCTION TYPE CODE	
CODE NO	ITEM	UNIT	TOTAL QUANTITIES	80% FED 20% STATE 0005
42400200	PORTLAND CEMENT CONCRETE SIDEWALK 5 INCH	SO FT	17268	17268
42400800	DETECTABLE WARNINGS	SO FT	1716	1716
44000158	HOT-MIX ASPHALT SURFACE REMOVAL, 2 1/4"	SO YD	88218	88218
44000600	SIDEWALK REMOVAL	SO FT	17268	17268
44201803	CLASS D PATCHES, TYPE II, 13 INCH	SO YD	1300	1300
44201807	CLASS D PATCHES, TYPE III, 13 INCH	SO YD	1700	1700
44201809	CLASS D PATCHES, TYPE IV, 13 INCH	SO YD	1300	1300
48102100	AGGREGATE WEDGE SHOULDER, TYPE B	TON	262	262
60250200	CATCH BASINS TO BE ADJUSTED	EACH	10	10
60255500	MANHOLES TO BE ADJUSTED	EACH	3	3
60300105	FRAMES AND GRATES TO BE ADJUSTED	EACH	20	20
60300305	FRAMES AND LIDS TO BE ADJUSTED	EACH	35	35
66900200	NON-SPECIAL WASTE DISPOSAL	CU YD	205	205
66900450	SPECIAL WASTE PLANS AND REPORTS	LSUM	1	1
66900530	SOIL DISPOSAL ANALYSIS	EACH	2	2
67000400	ENGINEER'S FIELD OFFICE, TYPE A	CAL MO	6	6

FILE NAME :	USER NAME : paramo	DESIGNED -	REVISED -
C:\Users\parril\Documents\2017\Projects\2017\ASCD\Design\2017\1118\1118.DWG		CHECKED -	REVISED -
		DATE -	REVISED -

STATE OF ILLINOIS  
DEPARTMENT OF TRANSPORTATION

ILLINOIS ROUTE 25: WILSON ST. TO N. OF STATE AVE.  
SUMMARY OF QUANTITIES

F.A.U. RTE.	SECTION	COUNTY	TOTAL SHEETS	SHEET NO.
2503	(44,48,46EXT.&52)RS-4	KANE	56	3
FED. ROAD DIST. NO. 1 ILLINOIS FED. AID PROJECT			CONTRACT NO. 62B89	

SCALE: SHEET NO. OF SHEETS STA. TO STA.

Rev 4-13-17

SUMMARY OF QUANTITIES			TOTAL QUANTITIES	CONSTRUCTION TYPE CODE			
CODE NO	ITEM	UNIT		80% FED 20% STATE 0005			
67100100	MOBILIZATION	LSUM	1	1			
70100450	TRAFFIC CONTROL AND PROTECTION, STANDARD 701201	LSUM	1	1			
70100460	TRAFFIC CONTROL AND PROTECTION, STANDARD 701306	LSUM	1	1			
70100600	TRAFFIC CONTROL AND PROTECTION, STANDARD 701336	LSUM	1	1			
70102620	TRAFFIC CONTROL AND PROTECTION, STANDARD 701501	LSUM	1	1			
70102622	TRAFFIC CONTROL AND PROTECTION, STANDARD 701502	LSUM	1	1			
70102625	TRAFFIC CONTROL AND PROTECTION, STANDARD 701606	LSUM	1	1			
70102630	TRAFFIC CONTROL AND PROTECTION, STANDARD 701601	LSUM	1	1			
70102635	TRAFFIC CONTROL AND PROTECTION, STANDARD 701701	LSUM	1	1			
70102640	TRAFFIC CONTROL AND PROTECTION, STANDARD 701801	LSUM	1	1			

SUMMARY OF QUANTITIES			TOTAL QUANTITIES	CONSTRUCTION TYPE CODE			
CODE NO	ITEM	UNIT		80% FED 20% STATE 0005			
70300100	SHORT TERM PAVEMENT MARKING	FOOT	11070	11070			
70300150	SHORT TERM PAVEMENT MARKING REMOVAL	SO FT	3691	3691			
70300210	TEMPORARY PAVEMENT MARKING LETTERS AND SYMBOLS	SO FT	583	583			
70300220	TEMPORARY PAVEMENT MARKING - LINE 4"	FOOT	37162	37162			
70300240	TEMPORARY PAVEMENT MARKING - LINE 6"	FOOT	4351	4351			
70300250	TEMPORARY PAVEMENT MARKING - LINE 8"	FOOT	360	360			
70300260	TEMPORARY PAVEMENT MARKING - LINE 12"	FOOT	831	831			
70300280	TEMPORARY PAVEMENT MARKING - LINE 24"	FOOT	764	764			
70300520	PAVEMENT MARKING TAPE, TYPE III 4"	FOOT	5535	5535			
72400500	RELOCATE SIGN PANEL ASSEMBLY - TYPE A	EACH	1	1			
72800100	TELESCOPING STEEL SIGN SUPPORT	FOOT	8	8			
78000100	THERMOPLASTIC PAVEMENT MARKING - LETTERS AND SYMBOLS	SO FT	583	583			
78000200	THERMOPLASTIC PAVEMENT MARKING - LINE 4"	FOOT	37162	37162			
78000400	THERMOPLASTIC PAVEMENT MARKING - LINE 6"	FOOT	4351	4351			

\* Specialty Item

FILE NAME :	USER NAME :	DESIGNED :	REVISED :
dw:\VLOP\EB\BID\INT\EG\Int\spv\PI\DOT\Document\5\DCD\071065\Dist\td\N\re\td\4\5\CAD\Q\td\Design\01746\B\B\AW\sh	paragood	-	-
PLOT SCALE :	CHECKED :	REVISED :	REVISED :
1:1000000	-	-	-
PLOT DATE :	DATE :	REVISED :	REVISED :
2/16/2017	-	-	-

STATE OF ILLINOIS  
DEPARTMENT OF TRANSPORTATION

ILLINOIS ROUTE 25: WILSON ST. TO N. OF STATE AVE.  
SUMMARY OF QUANTITIES

F.A.U. RTE.	SECTION	COUNTY	TOTAL SHEETS	SHEET NO.
2503	144,48,46EXT.&521RS-4	KANE	56	4
FED. ROAD DIST. NO. 1 ILLINOIS FED. AID PROJECT			CONTRACT NO. 62B89	

SCALE: SHEET NO. OF SHEETS STA. TO STA.

Rev 4-13-17

SUMMARY OF QUANTITIES			CONSTRUCTION TYPE CODE	
CODE NO	ITEM	UNIT	TOTAL QUANTITIES	80% FED 20% STATE 0005
* 78000500	THERMOPLASTIC PAVEMENT MARKING - LINE 8"	FOOT	360	360
* 78000600	THERMOPLASTIC PAVEMENT MARKING - LINE 12"	FOOT	831	831
* 78000650	THERMOPLASTIC PAVEMENT MARKING - LINE 24"	FOOT	764	764
* 78100100	RAISED REFLECTIVE PAVEMENT MARKER	EACH	977	977
78300200	RAISED REFLECTIVE PAVEMENT MARKER REMOVAL	EACH	781	781
* 85000200	MAINTENANCE OF EXISTING TRAFFIC SIGNAL INSTALLATION	EACH	6	6
* 88600600	DETECTOR LOOP REPLACEMENT	FOOT	2115	2115
* 89502376	REBUILD EXISTING HANDHOLE	EACH	12	12
X0320050	CONSTRUCTION LAYOUT (SPECIAL)	LSUM	1	1
X2020110	GRADING AND SHAPING SHOULDERS	UNIT	129	129
□ X5537800	STORM SEWERS TO BE CLEANED 12"	FOOT	1000	1000
X6030310	FRAMES AND LIDS TO BE ADJUSTED (SPECIAL)	EACH	90	90
X7030005	TEMPORARY PAVEMENT MARKING REMOVAL	SO FT	19379	19379

SUMMARY OF QUANTITIES			CONSTRUCTION TYPE CODE	
CODE NO	ITEM	UNIT	TOTAL QUANTITIES	80% FED 20% STATE 0005
Z0004562	COMBINATION CONCRETE CURB AND GUTTER REMOVAL AND REPLACEMENT	FOOT	2905	2905
Z0018500	DRAINAGE STRUCTURES TO BE CLEANED	EACH	45	45
Z0030850	TEMPORARY INFORMATION SIGNING	SO FT	102.8	102.8
Z0076600	TRAINEES	HOURL	500	500
Z0076604	TRAINEES-TRAINING PROGRAM GRANITE	HOURL	500	500

\* Specialty Item

FILE NAME :	USER NAME :	DESIGNED :	REVISED :
PROJECT :	DATE :	CHECKED :	REVISED :
PLOT SCALE :	DATE :	DATE :	REVISED :

STATE OF ILLINOIS  
DEPARTMENT OF TRANSPORTATION

ILLINOIS ROUTE 25: WILSON ST. TO N. OF STATE AVE.  
SUMMARY OF QUANTITIES

F.A.U. RTE.	SECTION	COUNTY	TOTAL SHEETS	SHEET NO.
2503	(44,48,46EXT, & 52)RS-4	KANE	56	5
CONTRACT NO. 62B89				

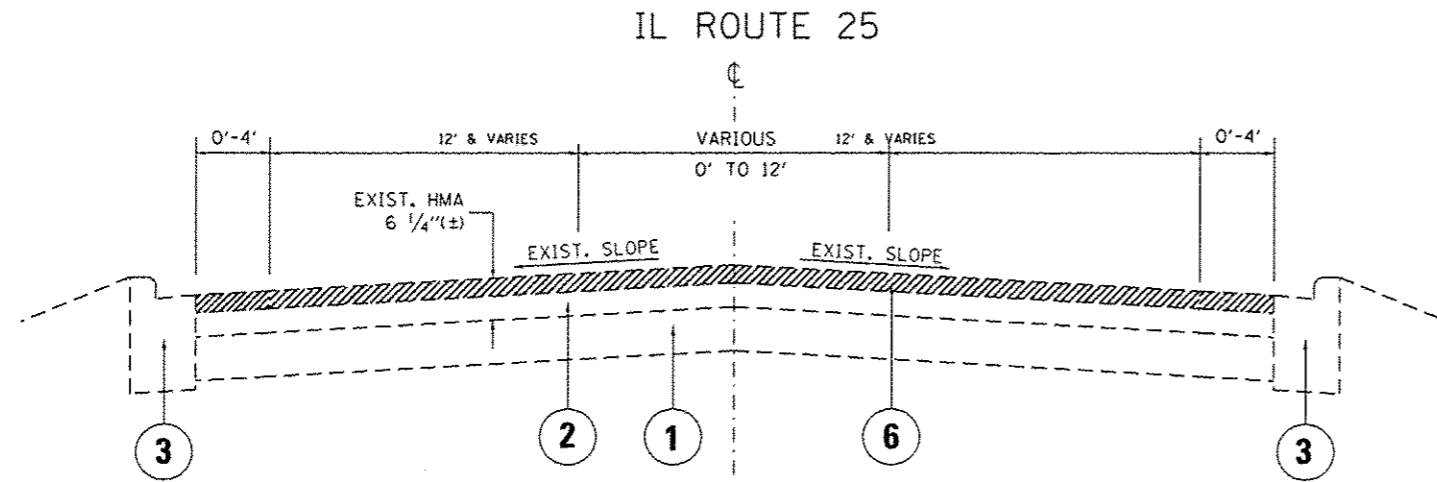
□ NOW-PARTICIPATING

Rev 4-13-17

Rev

**LEGEND**

- ① EXISTING P.C.C PAVEMENT, ± 9"
- ② EXISTING HMA SURFACE AFTER MILLING, ± 4"
- ③ EXISTING COMB. CONCRETE CURB & GUTTER
- ④ EXISTING HMA SHOULDER
- ⑤ EXISTING AGGREGATE SHOULDER
- ⑥ PROPOSED HMA SURFACE REMOVAL, 2 1/4"
- ⑦ PROPOSED HMA SURFACE COURSE, MIX "D", N70, 1 1/2"
- ⑧ PROPOSED POLYMERIZED LEVELING BINDER (MACHINE METHOD), IL-4.75, N50, 3/4"
- ⑨ PROPOSED AGGREGATE WEDGE SHOULDER, TYPE B
- ⑩ PROPOSED GRADING AND SHAPING SHOULDERS



STA. 10+28 TO STA. 47+70  
 STA. 65+10 TO STA. 75+50  
 STA. 122+00 TO 263+98.3

**HOT-MIX ASPHALT MIXTURE REQUIREMENTS**

MIXTURE TYPE	AIR VOIDS @ Nos	QMP
--------------	-----------------	-----

**ROADWAY RESURFACING:**

HOT-MIX ASPHALT SURFACE COURSE, MIX "D", N70 (IL 9.5 mm)	4% AT 70 GYR.	OCP
POLY. LEVELING BINDER (MACHINE METHOD), IL-4.75, N50	3.5% AT 50 GYR.	OCP

**HOT-MIX ASPHALT PATCHING:**

CLASS D PATCHES (HMA BINDER IL-19 mm)	4% AT 70 GYR.	QC/QA
---------------------------------------	---------------	-------

QMP Designation: Quality Control/Quality Assurance (QC/QA);  
 Quality Control for Performance (QCP); Pay for Performance (PFP)

**NOTES:**

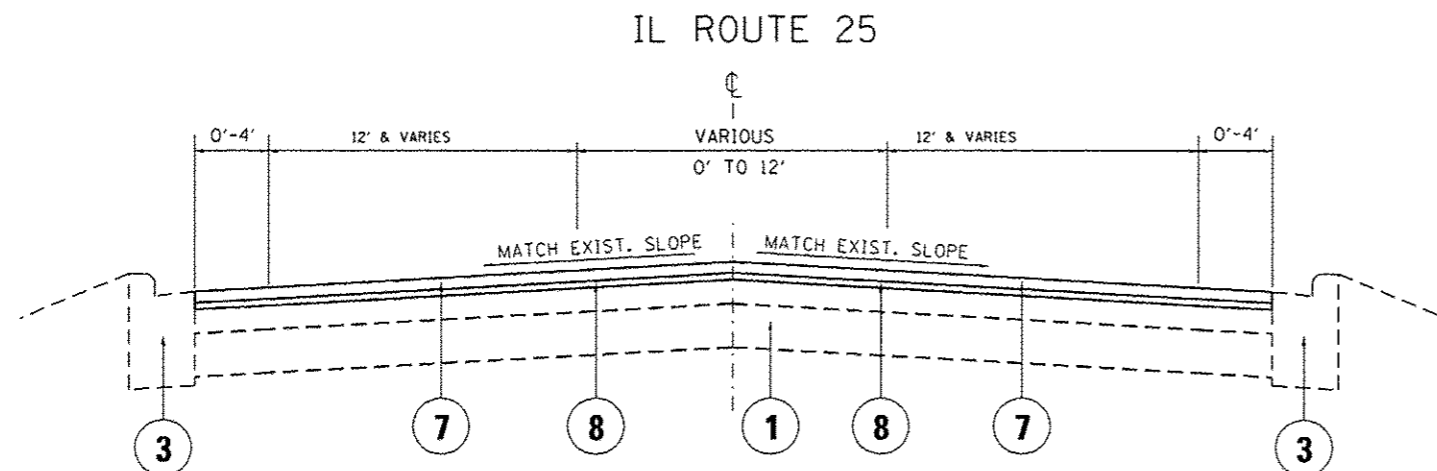
THE UNIT WEIGHT USED TO CALCULATE ALL HMA SURFACE MIXTURE QUANTITIES IS 112 LBS/50 YD/IN.

THE "AC TYPE" FOR POLYMERIZED HMA MIXES SHALL BE "SBS/SBR PG 76-22" AND FOR NON-POLYMERIZED HMA THE "AC TYPE" SHALL BE "PG 64-22" UNLESS MODIFIED BY DISTRICT ONE SPECIAL PROVISIONS.

FOR USE OF RECYCLED MATERIALS SEE SPECIAL PROVISIONS.

QUALITY MANAGEMENT PROGRAM (QMP) IDENTIFIES THE PARTICULAR QUALITY CONTROL SPECIFICATION THAT APPLIES TO THE HMA MIXTURE.

NOTE:  
 THE CONTRACTOR SHALL MILL THE ROADWAY FIRST, THEN DO PAVEMENT PATCHING PER BD-22 DETAIL.

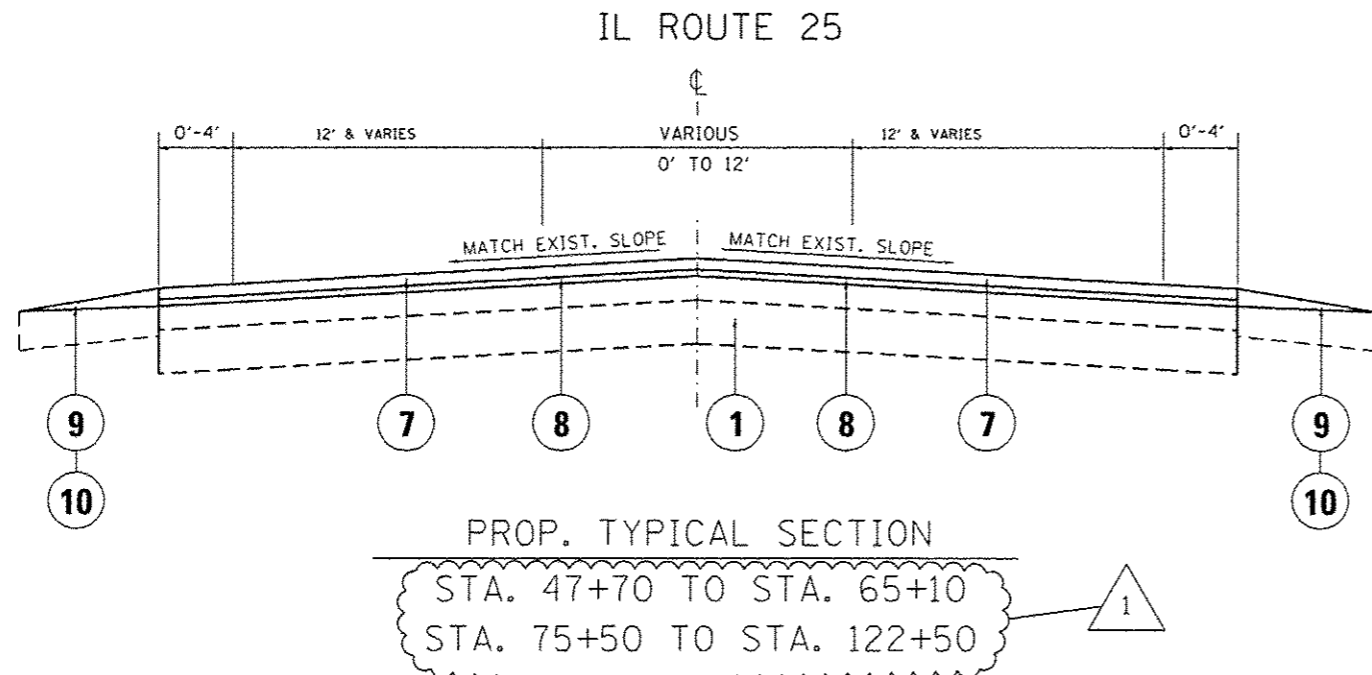
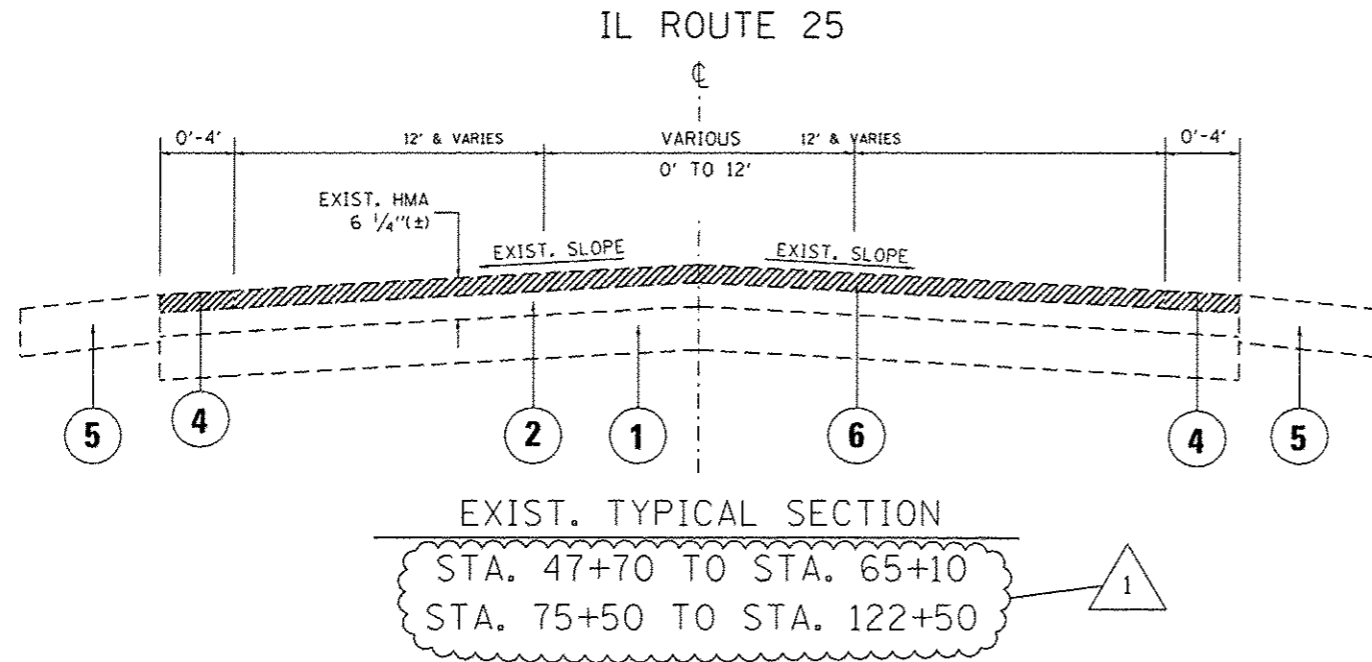


STA. 10+28 TO STA. 47+70  
 STA. 65+10 TO STA. 75+50  
 STA. 122+00 TO 263+98.3

FILE NAME : p:\IL084EBIDINTEG\illinois.gov\FWIDOT\Documents\DOT Offices\District 1\Projects\0117\DRAWING\Design\0117416-shr-plan.dgn	USER NAME : pparagon	DESIGNED -	REVISED - AP 4/12/17	<b>STATE OF ILLINOIS DEPARTMENT OF TRANSPORTATION</b>	<b>ILINOIS ROUTE 25 WILSON STREET TO N. OF STATE AVE.</b>		F.A.U. RTE. 2503	SECTION 144,48,46EXT.&52RS-4	COUNTY KANE	TOTAL SHEETS 56	SHEET NO. 6	
PLT SCALE = 100.0000 1/2" = 1'	CHECKED -	REVISOR -	REVISOR -		SCALE: NONE	SHEET OF SHEETS	STA. TO STA.	CONTRACT NO. 62B89				
PLDT DATE = 4/10/2017	DATE -	REVISOR -	REVISOR -		[ILLINOIS] FED. AID PROJECT							
Rev 4-13-17												

**LEGEND**

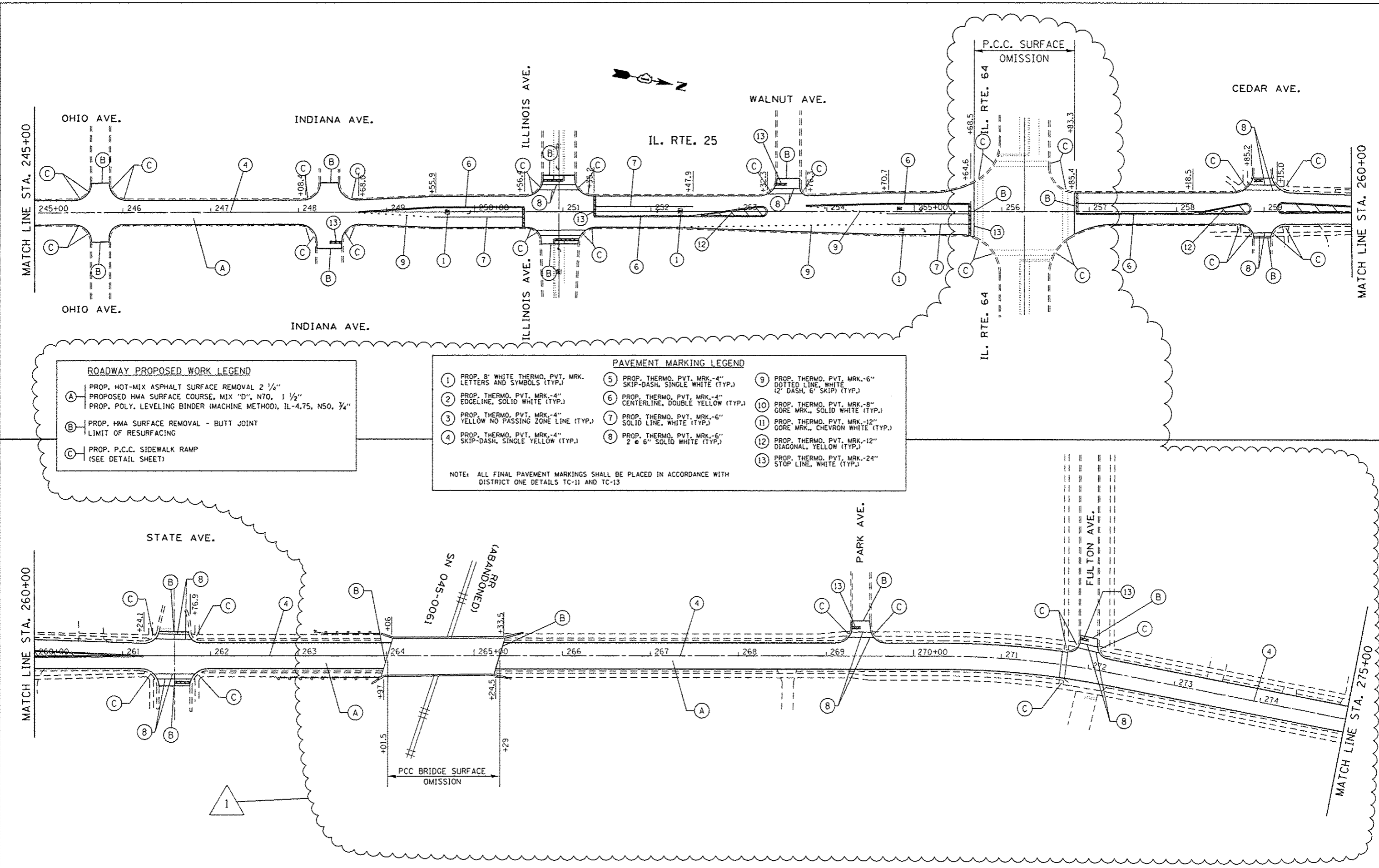
- ① EXISTING P.C.C PAVEMENT, ± 9"
- ② EXISTING HMA SURFACE AFTER MILLING, ± 4"
- ③ EXISTING COMB. CONCRETE CURB & GUTTER
- ④ EXISTING HMA SHOULDER
- ⑤ EXISTING AGGREGATE SHOULDER
- ⑥ PROPOSED HMA SURFACE REMOVAL, 2 1/4"
- ⑦ PROPOSED HMA SURFACE COURSE, MIX "D", N70, 1 1/2"
- ⑧ PROPOSED POLYMERIZED LEVELING BINDER (MACHINE METHOD), IL-4.75, N50, 3/4"
- ⑨ PROPOSED AGGREGATE WEDGE SHOULDER, TYPE B
- ⑩ PROPOSED GRADING AND SHAPING SHOULDERS



NOTE:  
 THE CONTRACTOR SHALL MILL THE ROADWAY FIRST, THEN DO PAVEMENT PATCHING PER  
 BD-22 DETAIL.

FILE NAME :	USER NAME : paragnol	DESIGNED -	REVISED - $\Delta$ AP 4/12/17	<b>STATE OF ILLINOIS DEPARTMENT OF TRANSPORTATION</b>	<b>ILINOIS ROUTE 25 WILSON STREET TO N. OF STATE AVE.</b>	F.A.U. RTE.	SECTION	COUNTY	TOTAL SHEETS	SHEET NO.	
						2503	(44,48,46EXT.&52)RS-4	KANE	56	7	
						CONTRACT NO. 62B89					
						ILLINOIS FED. AID PROJECT					
Default	PLT SCALE = 100.0000' / 1" /	CHECKED -	REVISED -	SCALE: NONE	SHEET	OF	SHEETS	STA.	TO	STA.	
	PLT DATE = 4/10/2017	DATE -	REVISED -								

$\Delta$  Rev 4-13-17



**ROADWAY PROPOSED WORK LEGEND**

(A)	PROP. HOT-MIX ASPHALT SURFACE REMOVAL 2 1/4" PROPOSED HMA SURFACE COURSE, MIX "D", N70, 1 1/2" PROP. POLY. LEVELING BINDER (MACHINE METHOD), IL-4.75, N50, 3/4"
(B)	PROP. HMA SURFACE REMOVAL - BUTT JOINT LIMIT OF RESURFACING
(C)	PROP. P.C.C. SIDEWALK RAMP (SEE DETAIL SHEET)

**PAVEMENT MARKING LEGEND**

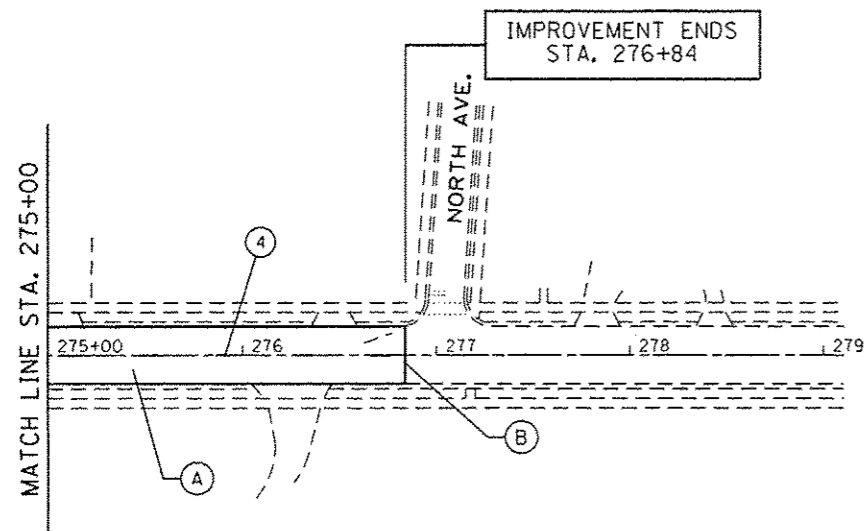
(1) PROP. 8" WHITE THERMO. PVT. MRK. LETTERS AND SYMBOLS (TYP.)	(5) PROP. THERMO. PVT. MRK.-4" SKIP-DASH, SINGLE WHITE (TYP.)	(9) PROP. THERMO. PVT. MRK.-6" DOTTED LINE, WHITE 12" DASH, 6" SKIP (TYP.)
(2) PROP. THERMO. PVT. MRK.-4" EDGELINE, SOLID WHITE (TYP.)	(6) PROP. THERMO. PVT. MRK.-4" CENTERLINE, DOUBLE YELLOW (TYP.)	(10) PROP. THERMO. PVT. MRK.-8" GORE MRK., SOLID WHITE (TYP.)
(3) PROP. THERMO. PVT. MRK.-4" YELLOW NO PASSING ZONE LINE (TYP.)	(7) PROP. THERMO. PVT. MRK.-6" SOLID LINE, WHITE (TYP.)	(11) PROP. THERMO. PVT. MRK.-12" GORE MRK., CHEVRON WHITE (TYP.)
(4) PROP. THERMO. PVT. MRK.-4" SKIP-DASH, SINGLE YELLOW (TYP.)	(8) PROP. THERMO. PVT. MRK.-6" 2 @ 6" SOLID WHITE (TYP.)	(12) PROP. THERMO. PVT. MRK.-12" DIAGONAL, YELLOW (TYP.)
		(13) PROP. THERMO. PVT. MRK.-24" STOP LINE, WHITE (TYP.)

NOTE: ALL FINAL PAVEMENT MARKINGS SHALL BE PLACED IN ACCORDANCE WITH DISTRICT ONE DETAILS TC-11 AND TC-13

FILE NAME :	USER NAME :	DESIGNED :	REVISED :	<b>STATE OF ILLINOIS</b> <b>DEPARTMENT OF TRANSPORTATION</b>	<b>ROADWAY PLAN</b> <b>ILL 25 FROM WILSON STREET TO NORTH OF STATE AVENUE</b>	F.A.U. RTE.:	SECTION:	COUNTY:	TOTAL SHEETS:	SHEET NO.:	
						2503	144, 48, 46EXT.&52)	RS-4	KANE	56	16
						CONTRACT NO. 62889					
						ILLINOIS FED. AID PROJECT					
Default	PLOT SCALE = 100.0000' / in.	CHECKED :	REVISOR :	SCALE:	SHEET OF SHEETS:	STA. TO STA.:					
	PLOT DATE = 4/18/2017	DATE :	REVISOR :								

1 Rev 4-13-17





ROADWAY PROPOSED WORK LEGEND	
(A)	PROP. HOT-MIX ASPHALT SURFACE REMOVAL 2 1/4" PROPOSED HMA SURFACE COURSE, MIX "D", N70, 1 1/2" PROP. POLY. LEVELING BINDER (MACHINE METHOD), IL-4.75, N50, 3/4"
(B)	PROP. HMA SURFACE REMOVAL - BUTT JOINT LIMIT OF RESURFACING
(C)	PROP. P.C.C. SIDEWALK RAMP (SEE DETAIL SHEET)

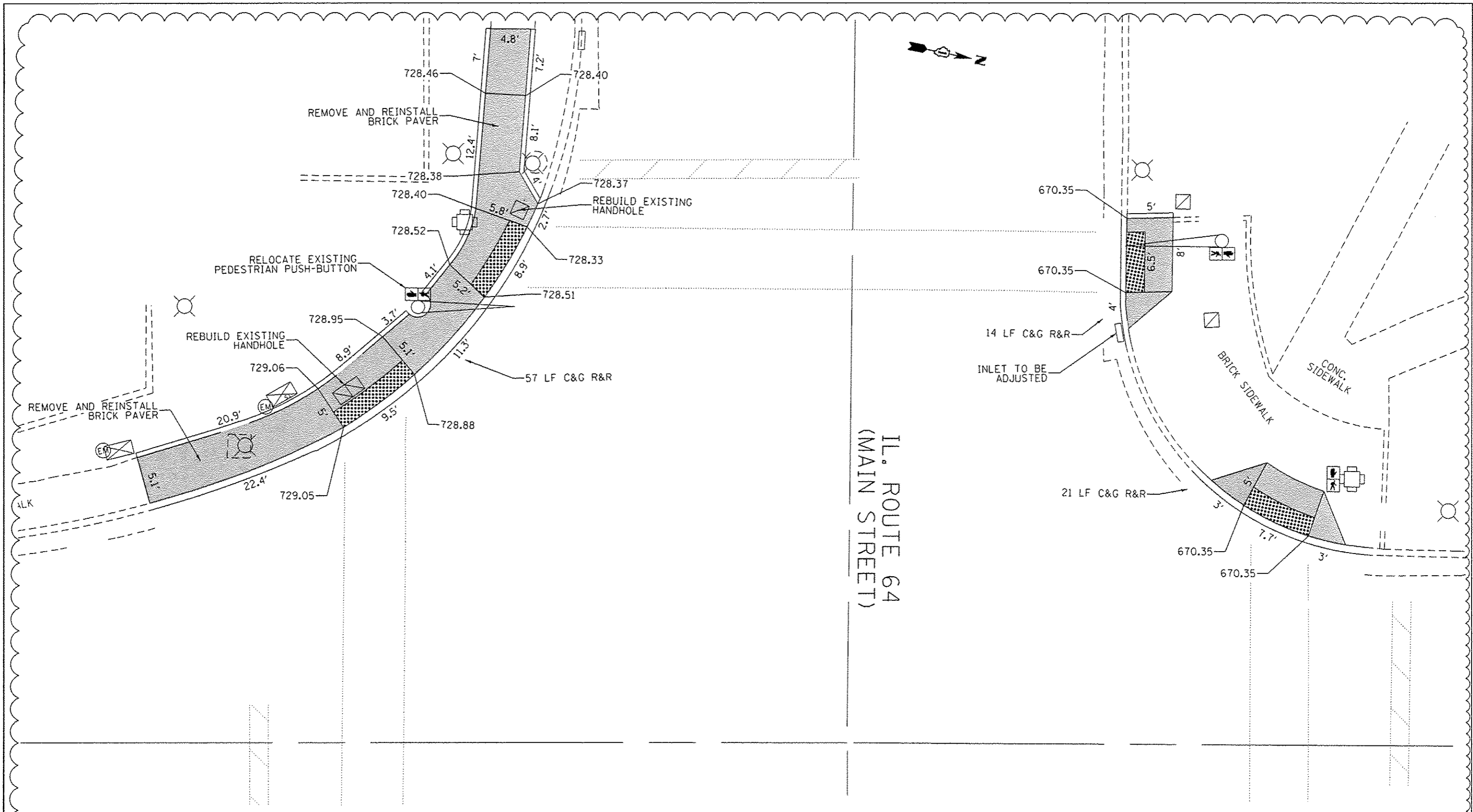
PAVEMENT MARKING LEGEND		
(1) PROP. 8" WHITE THERMO. PVT. MRK. LETTERS AND SYMBOLS (TYP.)	(5) PROP. THERMO. PVT. MRK.-4" SKIP-DASH, SINGLE WHITE (TYP.)	(9) PROP. THERMO. PVT. MRK.-6" DOTTED LINE, WHITE (2" DASH, 6" SKIP) (TYP.)
(2) PROP. THERMO. PVT. MRK.-4" EDGELINE, SOLID WHITE (TYP.)	(6) PROP. THERMO. PVT. MRK.-4" CENTERLINE, DOUBLE YELLOW (TYP.)	(10) PROP. THERMO. PVT. MRK.-8" GORE MRK., SOLID WHITE (TYP.)
(3) PROP. THERMO. PVT. MRK.-4" YELLOW NO PASSING ZONE LINE (TYP.)	(7) PROP. THERMO. PVT. MRK.-6" SOLID LINE, WHITE (TYP.)	(11) PROP. THERMO. PVT. MRK.-12" GORE MRK., CHEVRON WHITE (TYP.)
(4) PROP. THERMO. PVT. MRK.-4" SKIP-DASH, SINGLE YELLOW (TYP.)	(8) PROP. THERMO. PVT. MRK.-6" 2 @ 6" SOLID WHITE (TYP.)	(12) PROP. THERMO. PVT. MRK.-12" DIAGONAL, YELLOW (TYP.)
		(13) PROP. THERMO. PVT. MRK.-24" STOP LINE, WHITE (TYP.)

NOTE: ALL FINAL PAVEMENT MARKINGS SHALL BE PLACED IN ACCORDANCE WITH DISTRICT ONE DETAILS TC-11 AND TC-13



FILE NAME : p:\118846B10N1EG\Illinois.gov\PWIDOT\Documents\DOT Offices\District 1\Projects\DI17\DRAWING\Design\DI17416-rlt-plan.dgn	USER NAME : paragoal	DESIGNED - -	REVISED - AP 4/12/17	<b>STATE OF ILLINOIS DEPARTMENT OF TRANSPORTATION</b>	<b>ROADWAY PLAN ILL 25 FROM WILSON STREET TO NORTH OF STATE AVENUE</b>	F.A.U. RTE. 2503	SECTION (44, 48, 46EXT.&52) RS-4	COUNTY KANE	TOTAL SHEETS 56	SHEET NO. 16A		
PLLOT SCALE : 100.0000 / in.	CHECKED - -	REVISIED - -	REVISIED - -			SCALE:	SHEET OF SHEETS	STA. TO STA.	ILLINOIS FED. AID PROJECT CONTRACT NO. 62889			
PLLOT DATE : 4/11/2017	DATE - -	REVISIED - -	REVISIED - -									

Sheet Added 4-13-17



**LEGEND**

- XX.XX' EXISTING LENGTH
- PROPOSED SIDE CURB
- ( ) EXISTING ELEVATION/SLOPE
- PROPOSED SIDEWALK
- DETECTABLE WARNINGS
- SIDEWALK REMOVAL REPLACE W/TOPSOIL & SOD

FILE NAME :	USER NAME :	DESIGNED -	REVISED -
p:\il\084EBI\INTEG\illinois.gov\PIDOT\Documents\DOT Offices\District 1\Projects\0117\BRAW\0117\0117416-sht-details\01.dgn	paraynoal	AP 4/12/17	AP 4/12/17
Default	Default	Default	Default

STATE OF ILLINOIS  
DEPARTMENT OF TRANSPORTATION

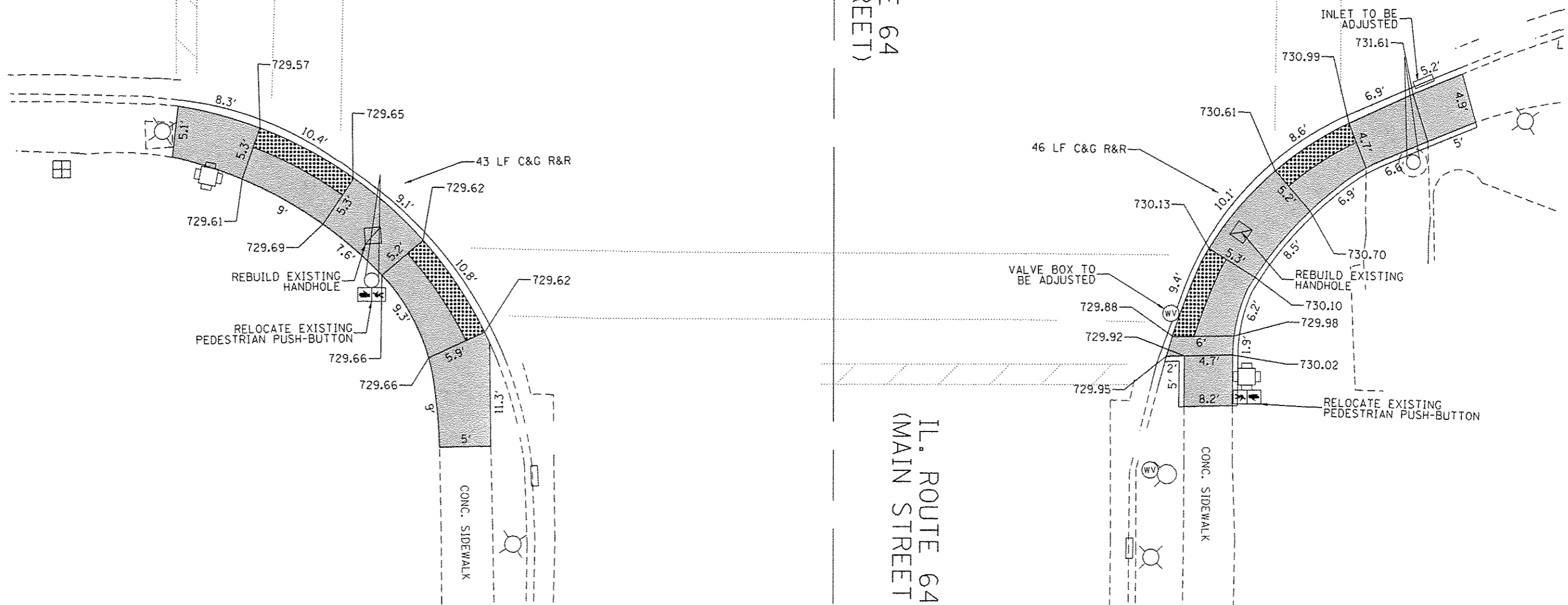
**SIDEWALK DETAIL PLAN**  
IL 25 AT IL 64 STREET, SW AND NW (STA. 256+00)

F.A.U. RTE.	SECTION	COUNTY	TOTAL SHEETS	SHEET NO.
2503	(44, 48, 46EXT, & 52) R5-4	KANE	56	40J
CONTRACT NO. 62BB9				
ILLINOIS FED. AID PROJECT				

Sheet Added 4-13-17

IL. ROUTE 64  
(MAIN STREET)

IL. ROUTE 64  
(MAIN STREET)



**LEGEND**

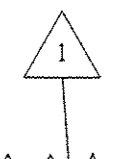
- xx.xx' EXISTING LENGTH
- PROPOSED SIDE CURB
- ( ) EXISTING ELEVATION/SLOPE
- PROPOSED SIDEWALK
- DETECTABLE WARNINGS
- SIDEWALK REMOVAL  
REPLACE W/TOPSOIL & SOD

FILE NAME :	USER NAME : ppragool	DESIGNED -	REVISED -
pr\N\04EBID\INTEG\illinois.gov\PIDOT\Documents\ID01 Offices\District 1\Projects\0117		AP 4/12/17	
Default	PLDT SCALE = 10.0000' / in.	CHECKED -	REVISED -
	PLDT DATE = 4/12/2017	DATE -	REVISED -

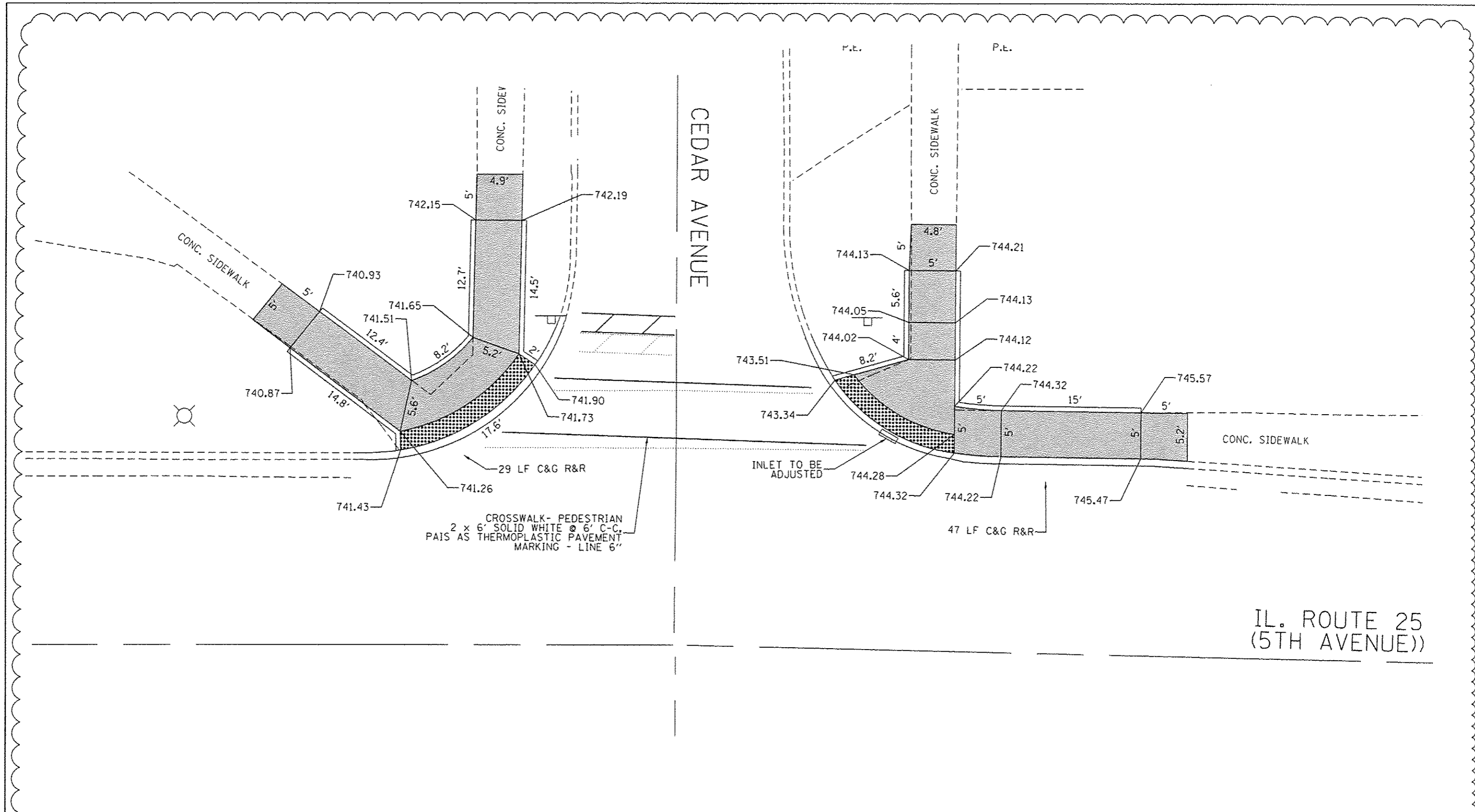
STATE OF ILLINOIS  
DEPARTMENT OF TRANSPORTATION

**SIDEWALK DETAIL PLAN**  
IL 25 AT IL 64 STREET, SE AND NE (STA. 256 + 00)

F.A.U. RTE.	SECTION	COUNTY	TOTAL SHEETS	SHEET NO.
2503	(44, 48, 46EXT.&52) RS-4	KANE	56	40K
CONTRACT NO. 62B89				



Sheet Added 4-13-17



CROSSWALK - PEDESTRIAN  
 2 x 6' SOLID WHITE @ 6' C-C.  
 PAIS AS THERMOPLASTIC PAVEMENT  
 MARKING - LINE 6"

IL. ROUTE 25  
 (5TH AVENUE))

**LEGEND**

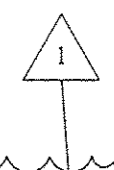
<span style="border: 1px solid black; padding: 2px;">XX.XX'</span> EXISTING LENGTH	PROPOSED SIDEWALK
PROPOSED SIDE CURB	DETECTABLE WARNINGS
( ) EXISTING ELEVATION/SLOPE	SIDEWALK REMOVAL REPLACE W/TOPSOIL & SOD

FILE NAME =	USER NAME = paragnool	DESIGNED -	REVISED - $\Delta$ AP 4/12/17
Default	...	CHECKED -	REVISED -
		DATE -	REVISED -

**STATE OF ILLINOIS  
 DEPARTMENT OF TRANSPORTATION**

**SIDEWALK DETAIL PLAN**  
 IL 25 AT CEDAR AVENUE, SW AND NW (STA. 259+00)

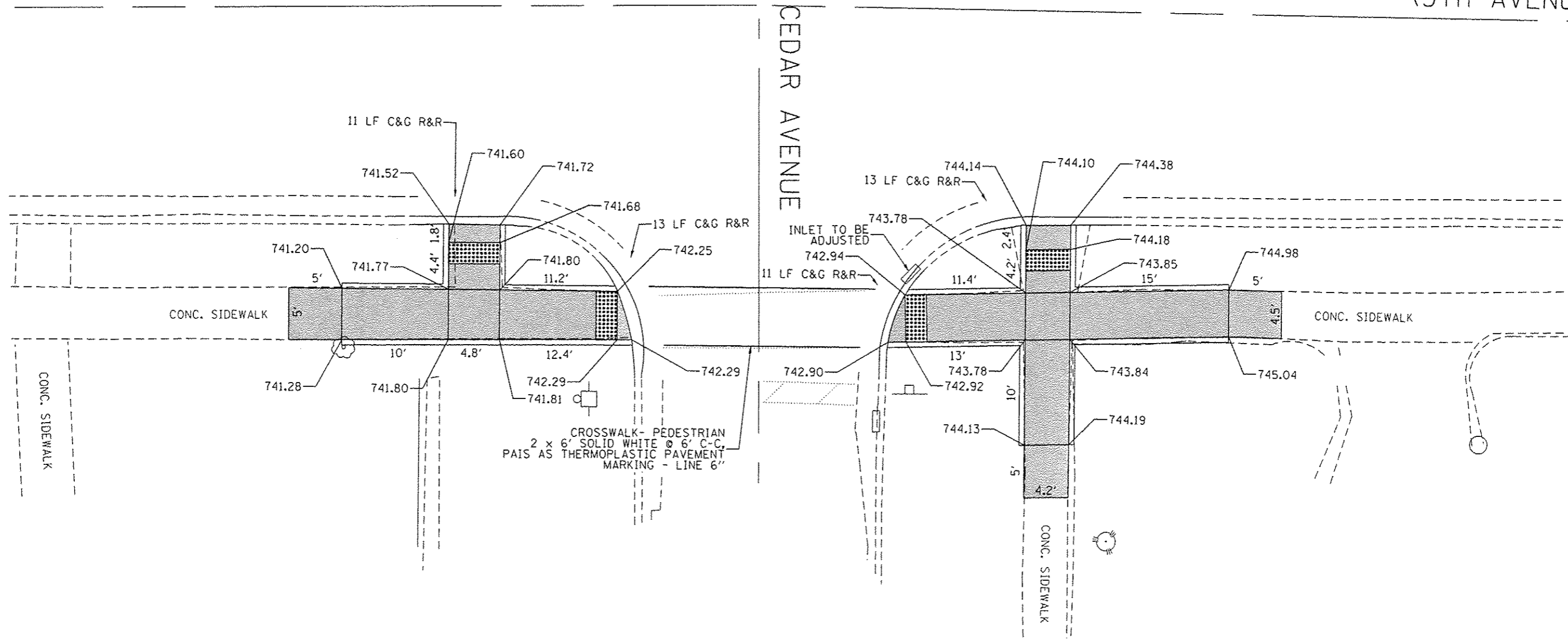
P.A.U. RTE.	SECTION	COUNTY	TOTAL SHEETS	SHEET NO.
2503	(44, 48, 46EXT.&52) RS-4	KANE	56	40
CONTRACT NO. 62B89				



$\Delta$  Sheet Added 4-13-17

IL. ROUTE 25  
(5TH AVENUE))

CEDAR AVENUE



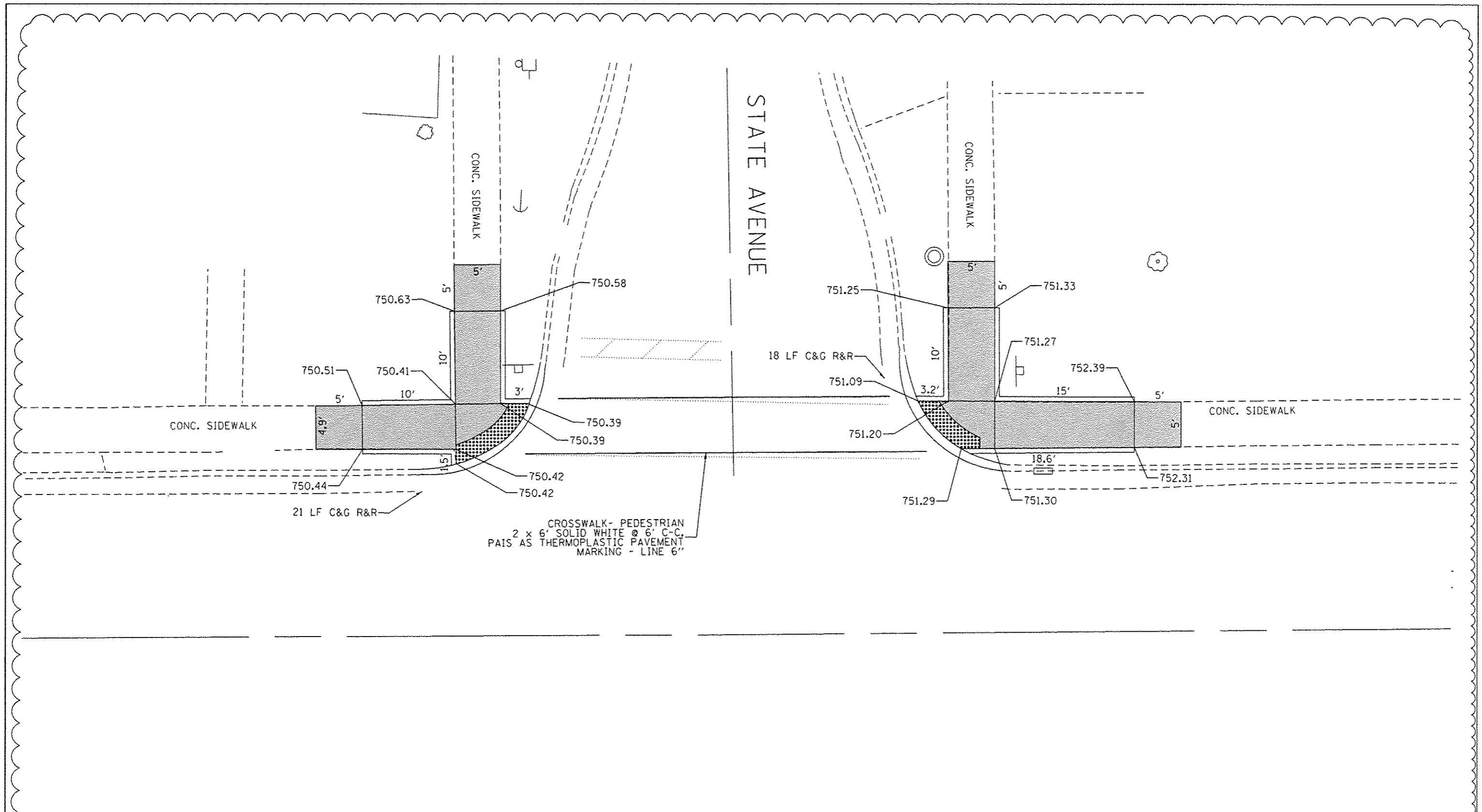
**LEGEND**

- xx.xx' EXISTING LENGTH
- ===== PROPOSED SIDE CURB
- ( ) EXISTING ELEVATION/SLOPE
- [Shaded Box] PROPOSED SIDEWALK
- [Grid Box] DETECTABLE WARNINGS
- [Cross-hatch Box] SIDEWALK REMOVAL REPLACE W/TOPSOIL & SOD

1

FILE NAME :	USER NAME :	DESIGNED :	REVISED :	<b>STATE OF ILLINOIS</b> <b>DEPARTMENT OF TRANSPORTATION</b>	<b>SIDEWALK DETAIL PLAN</b> <b>IL 25 AT CEDAR AVENUE, SE AND NE (STA. 259 + 00)</b>	F.A.J. RTE.	SECTION	COUNTY	TOTAL SHEETS	SHEET NO.	
per \\IL084EBIDINTEG\illinois.gov\PI\DOT\Documents\DOT Offices\District 1\Projects\DI172\Drawings\Design\DI17416-sht-details\01.dgn	per \\IL084EBIDINTEG\illinois.gov\PI\DOT\Documents\DOT Offices\District 1\Projects\DI172\Drawings\Design\DI17416-sht-details\01.dgn	4/12/17	AP 4/12/17			2503	(44, 48, 46EXT.&52)	RS-4	KANE	56	40M
PLT SCALE = 10.0000' / in.	CHECKED :	REVISED :	REVISED :			SCALE: SHEET OF SHEETS STA. TO STA.		CONTRACT NO. 62B89			
PLDT DATE = 4/12/2017	DATE :	REVISED :	REVISED :			ILLINOIS FED. AID PROJECT					

Sheet Added 4-13-17



CROSSWALK - PEDESTRIAN  
 2 x 6' SOLID WHITE @ 6' C-C,  
 PAIS AS THERMOPLASTIC PAVEMENT  
 MARKING - LINE 6"

LEGEND			
XX.XX'	EXISTING LENGTH		PROPOSED SIDEWALK
=====	PROPOSED SIDE CURB		DETECTABLE WARNINGS
( )	EXISTING ELEVATION/SLOPE		SIDEWALK REMOVAL REPLACE W/TOPSOIL & SOD

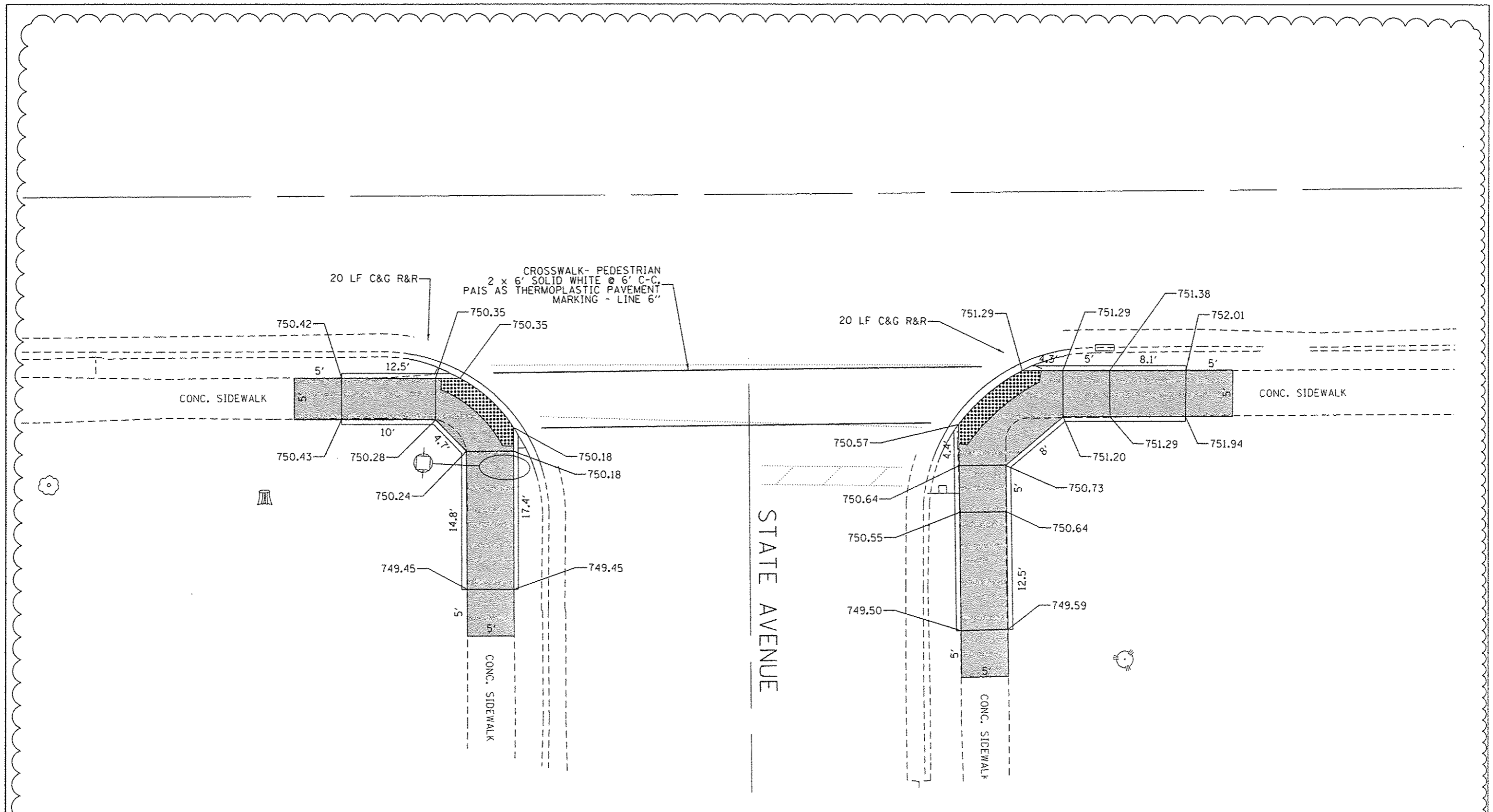
FILE NAME :	USER NAME :	DESIGNED :	REVISED :
pr\N\1804EBIDINTEG\Illinois.gov\PWIDOT\Documents\DOT Offices\District 1\Projects\0117\DRAWING\Design\0117416-ehd-detail\01.dwg	paragon	-	-
PLT SCALE :	CHECKED :	DATE :	REVISED :
10.0000 / in.	-	-	-
PLT DATE :	DATE :	DATE :	DATE :
4/12/2017	-	-	-

**STATE OF ILLINOIS  
 DEPARTMENT OF TRANSPORTATION**

**SIDEWALK DETAIL PLAN  
 IL 25 AT STATE AVENUE, ALL CORNERS (STA. 261+50)**

F.A.U. RTE.	SECTION	COUNTY	TOTAL SHEETS	SHEET NO.
2503	(44, 48, 46EXT, & 52) RS-4	KANE	56	40N
CONTRACT NO. 62889				
ILLINOIS FED. AID PROJECT				

Sheet Added 4-13-17



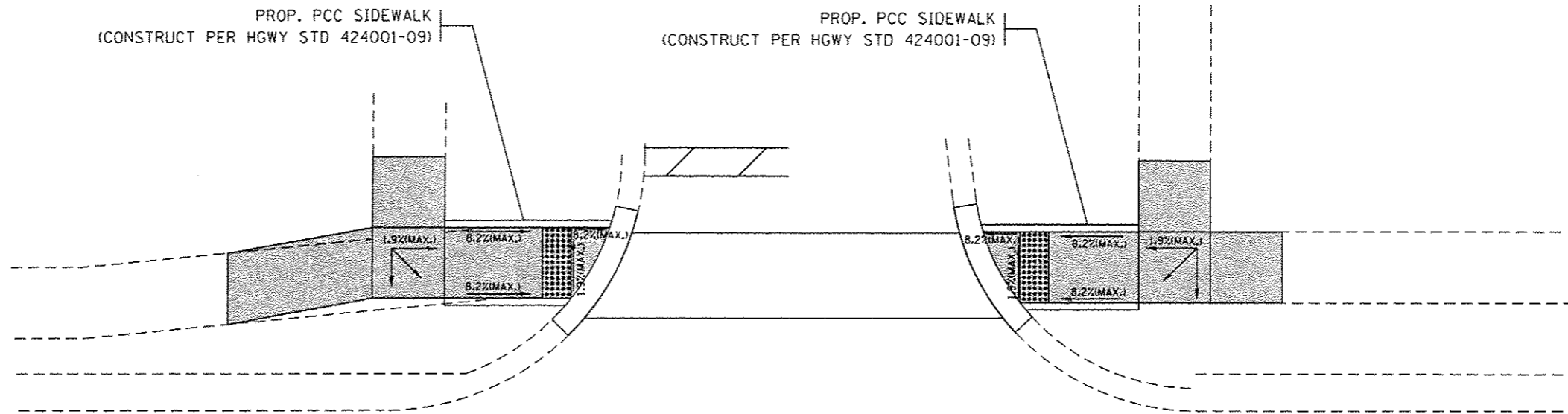
<b>LEGEND</b>		PROPOSED SIDEWALK DETECTABLE WARNINGS SIDEWALK REMOVAL REPLACE W/TOPSOIL & SOD
EXISTING LENGTH PROPOSED SIDE CURB ( ) EXISTING ELEVATION/SLOPE		

FILE NAME : USER NAME : paragonal PLOT SCALE = 10.0000' / 1"	DESIGNED - CHECKED - DATE -	REVISED - $\Delta$ AP 4/12/17 REVISED - REVISED - REVISED -	<b>STATE OF ILLINOIS</b> <b>DEPARTMENT OF TRANSPORTATION</b>	<b>SIDEWALK DETAIL PLAN</b> <b>IL 25 AT STATE AVENUE, ALL CORNERS (STA. 261+50)</b>	<table border="1" style="width:100%; border-collapse: collapse;"> <tr> <th>P.A.U. RTE.</th> <th>SECTION</th> <th>COUNTY</th> <th>TOTAL SHEETS</th> <th>SHEET NO.</th> </tr> <tr> <td>2503</td> <td>144, 48, 46EXT.&amp;52</td> <td>RS-4</td> <td>56</td> <td>400</td> </tr> </table>	P.A.U. RTE.	SECTION	COUNTY	TOTAL SHEETS	SHEET NO.	2503	144, 48, 46EXT.&52	RS-4	56	400
P.A.U. RTE.	SECTION	COUNTY	TOTAL SHEETS	SHEET NO.											
2503	144, 48, 46EXT.&52	RS-4	56	400											

SCALE: SHEET OF SHEETS STA. TO STA.

$\Delta$  Sheet Added 4-13-17

# PARK AVE.



NOTE:  
EXISTING SURVEY POINTS ARE NOT AVAILABLE FOR THE INTERSECTION. DESIGN SLOPES SHALL BE DETERMINED ON THE FIELD AS DIRECTED BY THE RESIDENT ENGINEER.

269



## LEGEND

xx.xx'

EXISTING LENGTH



PROPOSED SIDE CURB



EXISTING ELEVATION/SLOPE



PROPOSED SIDEWALK



DETECTABLE WARNINGS



SIDEWALK REMOVAL  
REPLACE W/TOPSOIL & SOD

FILE NAME :	USER NAME : paraynoal	DESIGNED -	REVISED - $\Delta$ AP 4/12/17
pc:\11884EBID\INTEG\Illinois.gov\PIDOT\Documents\1001 Offices\District 1\Projects\0117\BRAN\Bto\Design\0117416-shr-detail.dwg		CHECKED -	REVISED -
Default	PLOT SCALE = 18.0000' / in.	DATE -	REVISED -
	PLOT DATE = 4/12/2017		

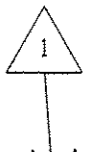
STATE OF ILLINOIS  
DEPARTMENT OF TRANSPORTATION

### SIDEWALK DETAIL PLAN

IL 25 AT IL 64 STREET, SW AND NW (STA. 269 + 30)

SCALE: SHEET OF SHEETS STA. TO STA.

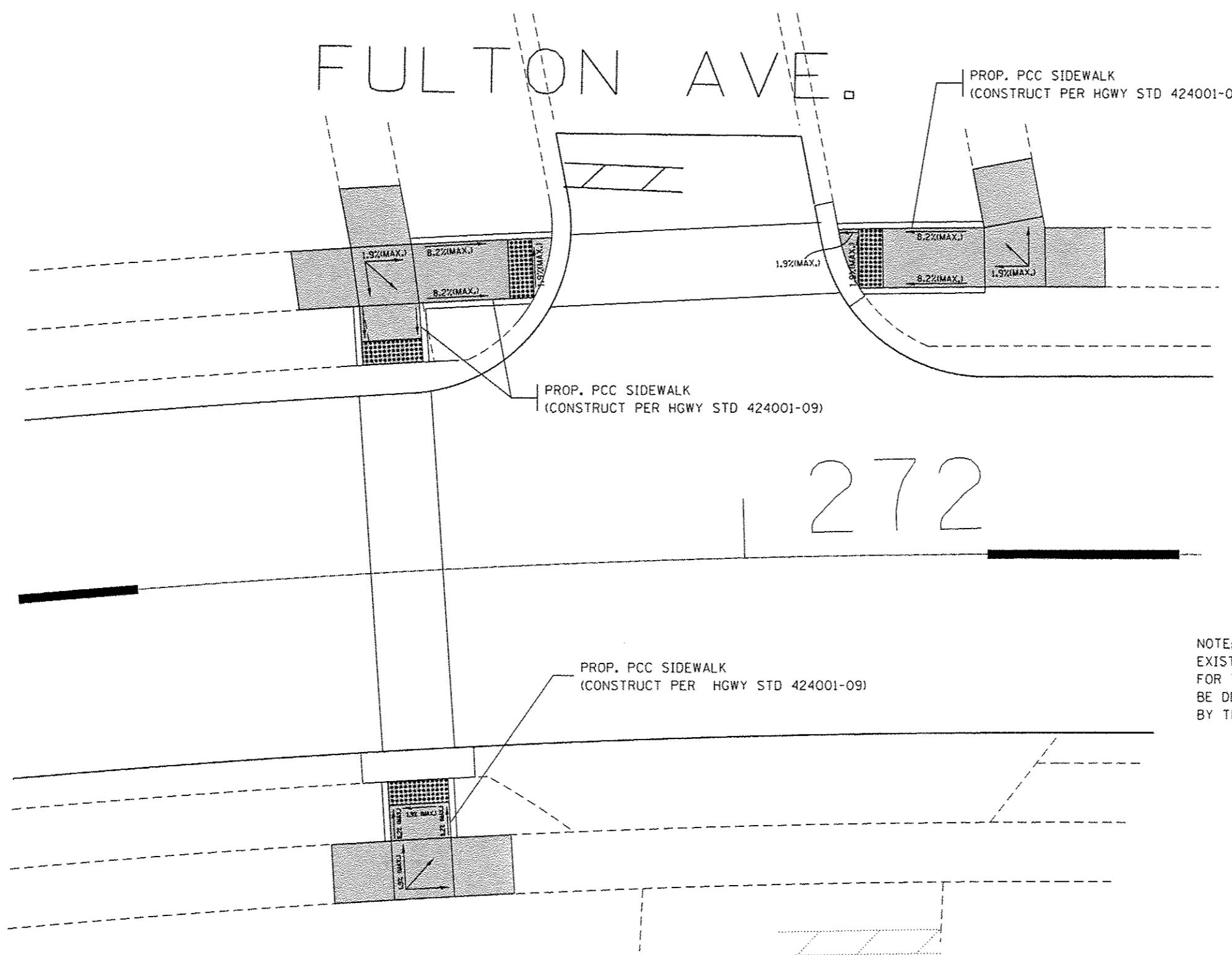
F.A.U. RTE.	SECTION	COUNTY	TOTAL SHEETS	SHEET NO.
2503	(44, 48, 46EXT.&52) RS-4	KANE	56	40P
				CONTRACT NO. 62B89
ILLINOIS FED. AID PROJECT				



$\Delta$  Sheet Added 4-13-17



# FULTON AVE.



NOTE:  
EXISTING SURVEY POINTS ARE NOT AVAILABLE FOR THE INTERSECTION. DESIGN SLOPES SHALL BE DETERMINED ON THE FIELD AS DIRECTED BY THE RESIDENT ENGINEER.

## LEGEND

- xx.xx' EXISTING LENGTH
- PROPOSED SIDE CURB
- ( ) EXISTING ELEVATION/SLOPE
- PROPOSED SIDEWALK
- DETECTABLE WARNINGS
- SIDEWALK REMOVAL  
REPLACE W/TOPSOIL & SOD

FILE NAME :	USER NAME : paragonal	DESIGNED -	REVISED -
p:\1\1884EBID\INTEG\illinois.gov\PI\DOT\Documents\DOT Offices\District 1\Projects\0117\DRAWING\Design\0117416-sht-detail\sl.dwg		AP 4/12/17	
Default	PLOT SCALE = 10.0000' / 1" =	CHECKED -	REVISED -
	PLOT DATE = 4/12/2017	DATE -	REVISED -

STATE OF ILLINOIS  
DEPARTMENT OF TRANSPORTATION

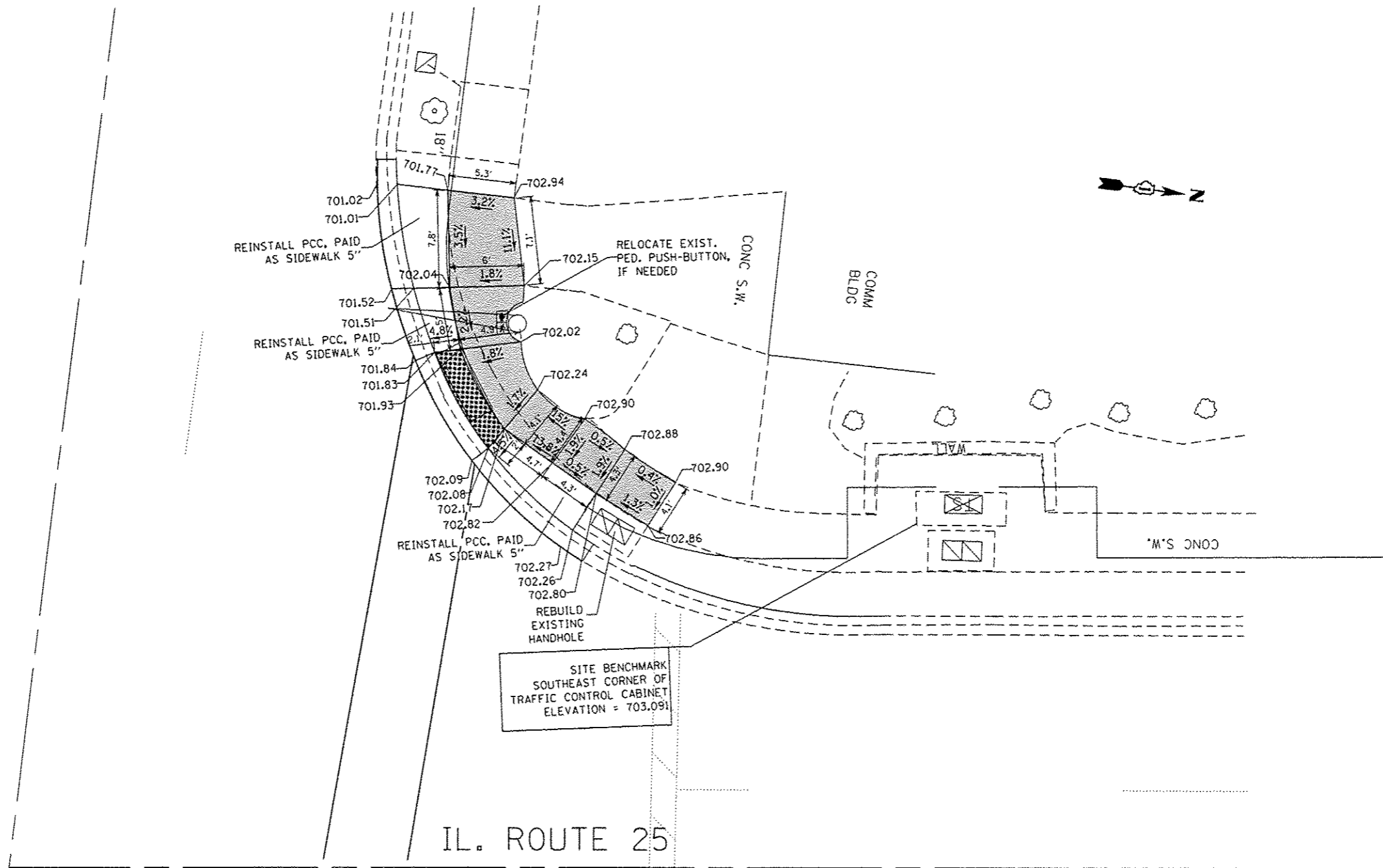
SIDEWALK DETAIL PLAN  
IL 25 AT IL 64 STREET, SW AND NW (STA. 272+00)

SCALE: SHEET OF SHEETS STA. TO STA.

F.A.U. RTE.	SECTION	COUNTY	TOTAL SHEETS	SHEET NO.
2503	(44, 48, 46EXT.&52) RS-4	KANE	56	400
			CONTRACT NO. 62889	

ILLINOIS FED. AID PROJECT

Sheet Added 4-13-17

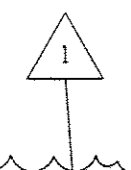


REFERENCE BENCHMARK ELEV SEE PLAN DETAIL

BENCHMARK : SEE PLAN DETAIL

**LEGEND**

- xx.xx EXISTING LENGTH
- PROPOSED SIDE CURB
- ( ) EXISTING ELEVATION/SLOPE
- PROPOSED SIDEWALK
- DETECTABLE WARNINGS
- SIDEWALK REMOVAL  
REPLACE W/TOPSOIL & SOD



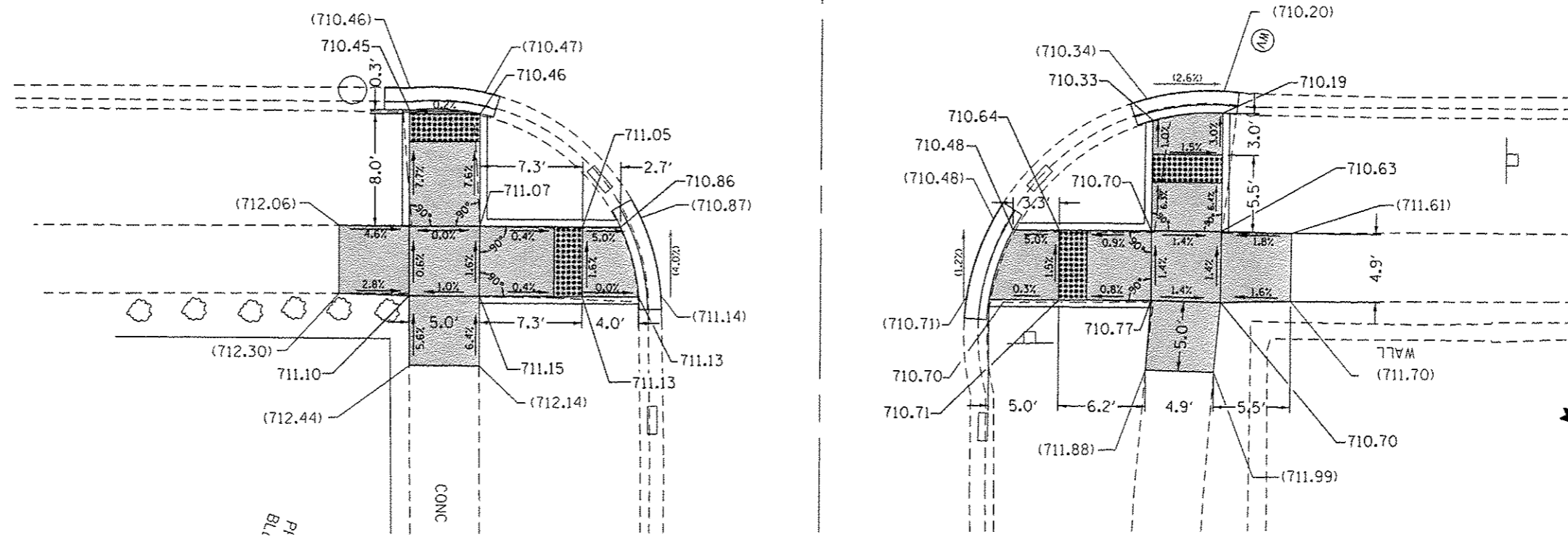
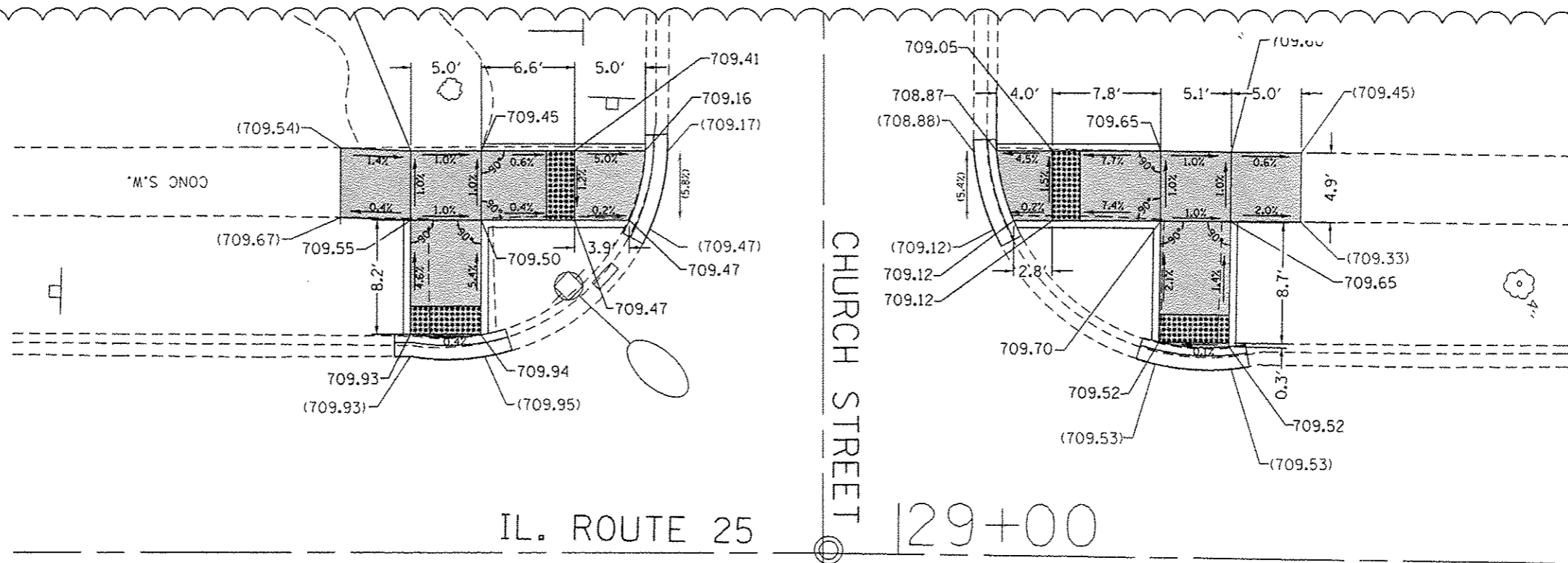
FILE NAME :	USER NAME : pcraypool	DESIGNED -	REVISED -
p:\11884EBID\INTEG\Illinois.gov\PI\DOT\Documents\DOT Offices\District 1\Projects\011718\Drawings\to\Design\0117416-sht-detail\01.dgn		AP 4/12/17	
PLOT SCALE = 10.0000' = 1" = 30'	CHECKED -	REVISED -	
PLOT DATE = 4/12/2017	DATE -	REVISED -	

**STATE OF ILLINOIS  
DEPARTMENT OF TRANSPORTATION**

**SIDEWALK DETAIL PLAN**  
**IL 25 AT WILSON STREET, NW CORNER (STA. 10+28)**  
 SCALE: SHEET OF SHEETS STA. TO STA.

F.A.U. RTE.	SECTION	COUNTY	TOTAL SHEETS	SHEET NO.
2503	(44, 48, 46EXT. & 52) RS-4	KANE	56	40B
CONTRACT NO. 62B89				
ILLINOIS FED. AID PROJECT				

Sheet Added 4-13-17



REFERENCE BENCHMARK ELEV. 710.808  
 BENCHMARK LOCATION : SOUTHWEST INTERSECTION CORNER,  
 NORTHEAST CORNER OF CONCRETE STEP

**LEGEND**

- xx.xx' EXISTING LENGTH
- PROPOSED SIDE CURB
- EXISTING ELEVATION/SLOPE
- PROPOSED SIDEWALK
- DETECTABLE WARNINGS
- SIDEWALK REMOVAL  
 REPLACE W/TOPSOIL & SOD

1

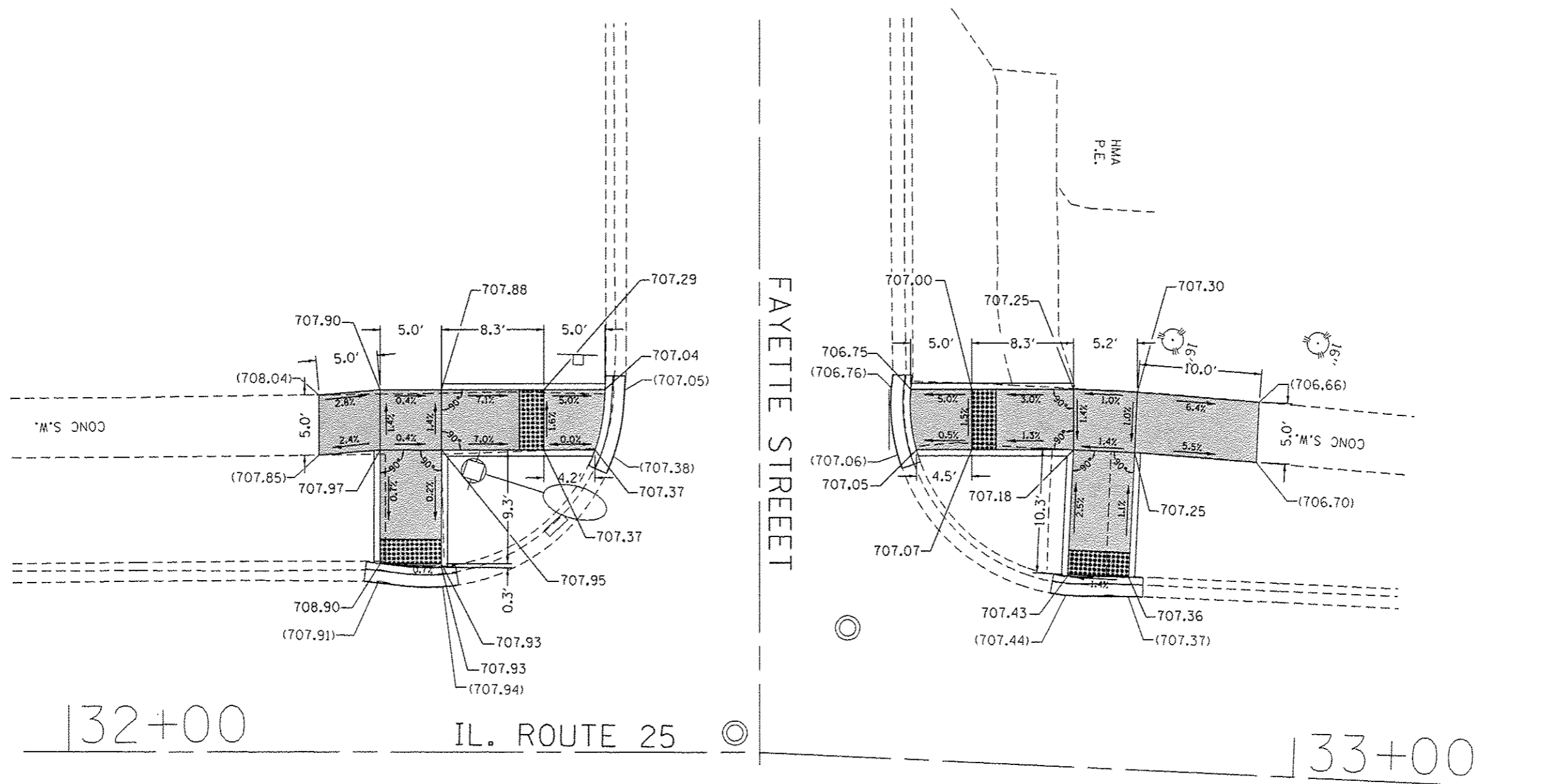
**STATE OF ILLINOIS  
 DEPARTMENT OF TRANSPORTATION**

**SIDEWALK DETAIL PLAN**  
**IL 25 AT CHURCH STREET, ALL CORNERS (STA. 29+00)**

FILE NAME :	USER NAME : paronol	DESIGNED -	REVISED -
			AP 4/12/17
		CHECKED -	REVISED -
		DATE -	REVISED -

F.A.U. RTE.	SECTION	COUNTY	TOTAL SHEETS	SHEET NO.
2503	(44, 48, 46EXT.&52) RS-4	KANE	56	40C
CONTRACT NO. 62B89				

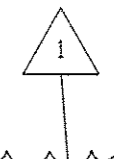
Sheet Added 4-13-17



REFERENCE BENCHMARK ELEV: 711.024  
 BENCHMARK LOCATION : NORTHEAST CORNER OF INTERSECTION,  
 NORTHWEST BOLT

**LEGEND**

- xx.xx' EXISTING LENGTH
- ==== PROPOSED SIDE CURB
- ( ) EXISTING ELEVATION/SLOPE
- PROPOSED SIDEWALK
- DETECTABLE WARNINGS
- SIDEWALK REMOVAL  
REPLACE W/TOPSOIL & SOD



FILE NAME :	USER NAME : paraynoal	DESIGNED -	REVISED - $\Delta$ AP 4/12/17
pw:\IL\84EBID\INTEG\illinois.gov\PI\DOT\Documents\IDOT Offices\District 1\Projects\DI17\DRAW\State\Design\DI17416-ehs-detail1.dwg		CHECKED -	REVISED -
Default	PLOT SCALE = 18.0000' / in.	DATE -	REVISED -
	PLOT DATE = 4/12/2017		

STATE OF ILLINOIS  
 DEPARTMENT OF TRANSPORTATION

**SIDEWALK DETAIL PLAN**  
**IL 25 AT FAYETTE STREET, SW AND NW CORNERS (STA. 32+50)**

SCALE: SHEET OF SHEETS STA. TO STA.

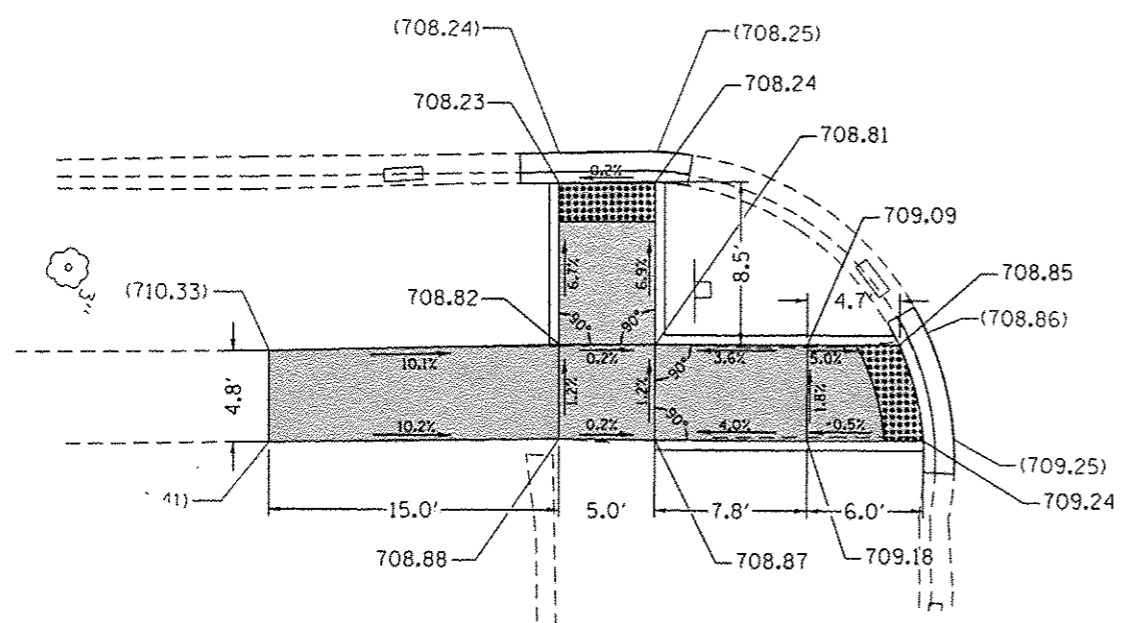
F.A.U. RTE.	SECTION	COUNTY	TOTAL SHEETS	SHEET NO.
2503	144, 48, 46EXT.&521 RS-4	KANE	96	400
ILLINOIS FED. AID PROJECT			CONTRACT NO. 62B89	

$\Delta$  Sheet Added 4-13-17

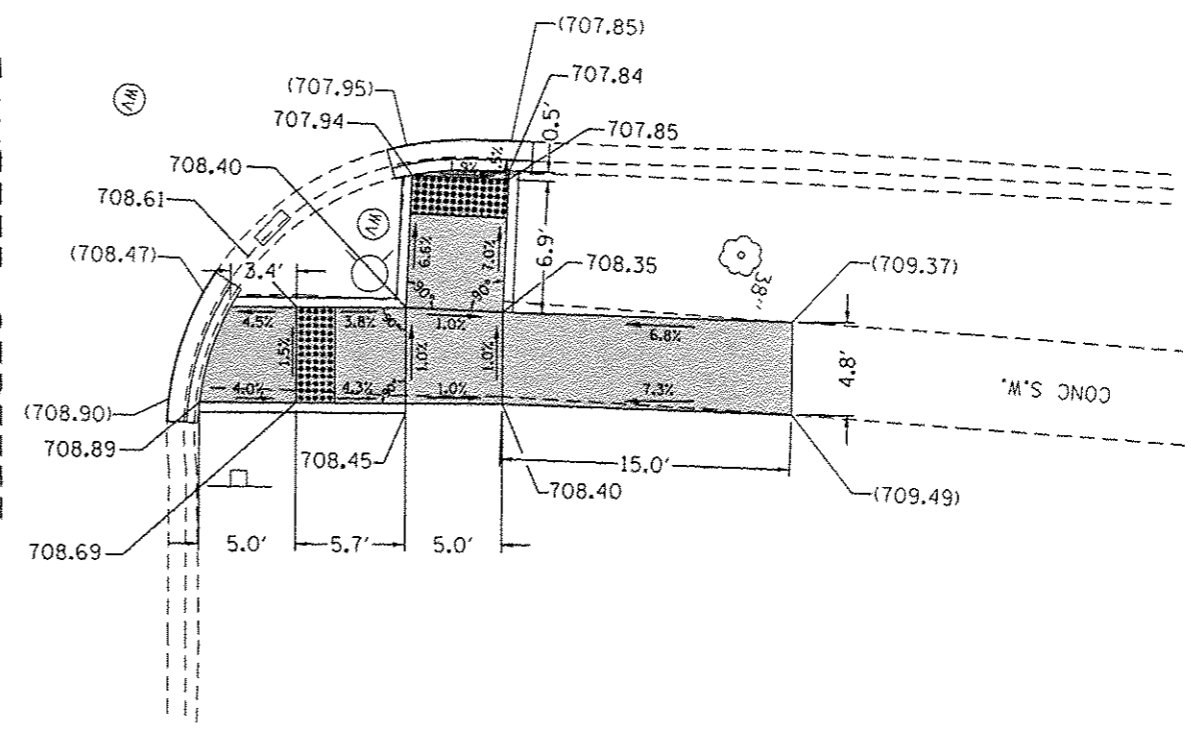
132+00

IL. ROUTE 25

133+00



FAYETTE STREET

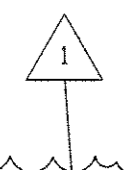


REFERENCE BENCHMARK ELEV: 711.024

BENCHMARK LOCATION : NORTHEAST CORNER OF INTERSECTION,  
NORTHWEST BOLT

**LEGEND**

- XX.XX' EXISTING LENGTH
- PROPOSED SIDE CURB
- ( ) EXISTING ELEVATION/SLOPE
- PROPOSED SIDEWALK
- DETECTABLE WARNINGS
- SIDEWALK REMOVAL  
REPLACE W/TOPSOIL & SOD



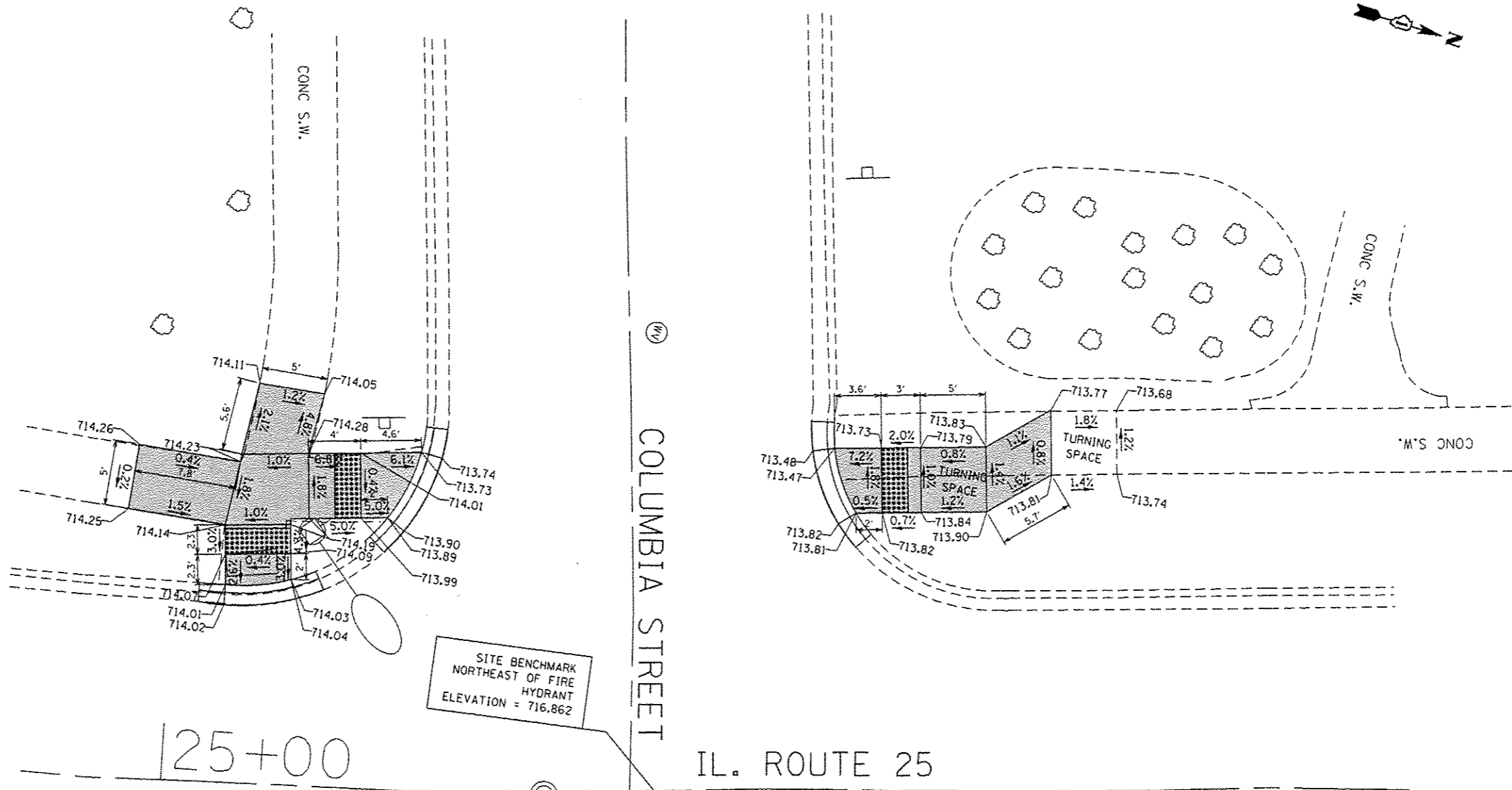
FILE NAME :	USER NAME :	DESIGNED :	REVISED :
pw\11884EBID\INTEG\Illinois.gov\FW\DOT\Documents\DOT Offices\District 1\Projects\0117\BRAWN\Design\0117416-shr-details\01.dwg	paragon	-	-
PLOT SCALE :	CHECKED :	DATE :	REVISED :
10.0000' / 1" = 100'	-	-	-
PLOT DATE :	DATE :	DATE :	DATE :
4/12/2017	-	-	-

STATE OF ILLINOIS  
DEPARTMENT OF TRANSPORTATION

**SIDEWALK DETAIL PLAN**  
IL 25 AT FAYETTE STREET, SE AND NE (STA. 32+50)

F.A.U. RTE.	SECTION	COUNTY	TOTAL SHEETS	SHEET NO.
2503	(44, 48, 46EXT.&52) RS-4	KANE	56	40E
ILLINOIS FED. AID PROJECT				CONTRACT NO. 62B89

Sheet Added 4-13-17



REFERENCE BENCHMARK ELEV: 716.862  
 BENCHMARK LOCATION : NE CORNER OF INTERSECTION,  
 NE BOLT

**LEGEND**

- xx.xx' EXISTING LENGTH
- ===== PROPOSED SIDE CURB
- ( ) EXISTING ELEVATION/SLOPE
- [Shaded Box] PROPOSED SIDEWALK
- [Grid Box] DETECTABLE WARNINGS
- [Cross-hatched Box] SIDEWALK REMOVAL  
REPLACE W/TOPSOIL & SOD

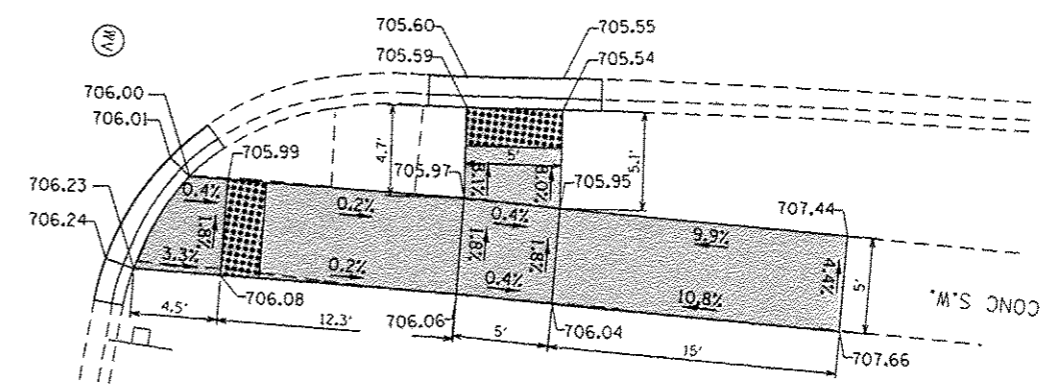
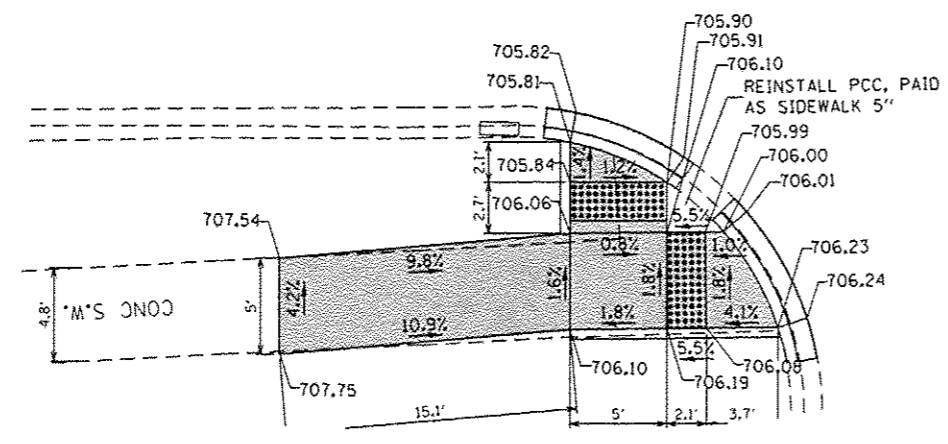
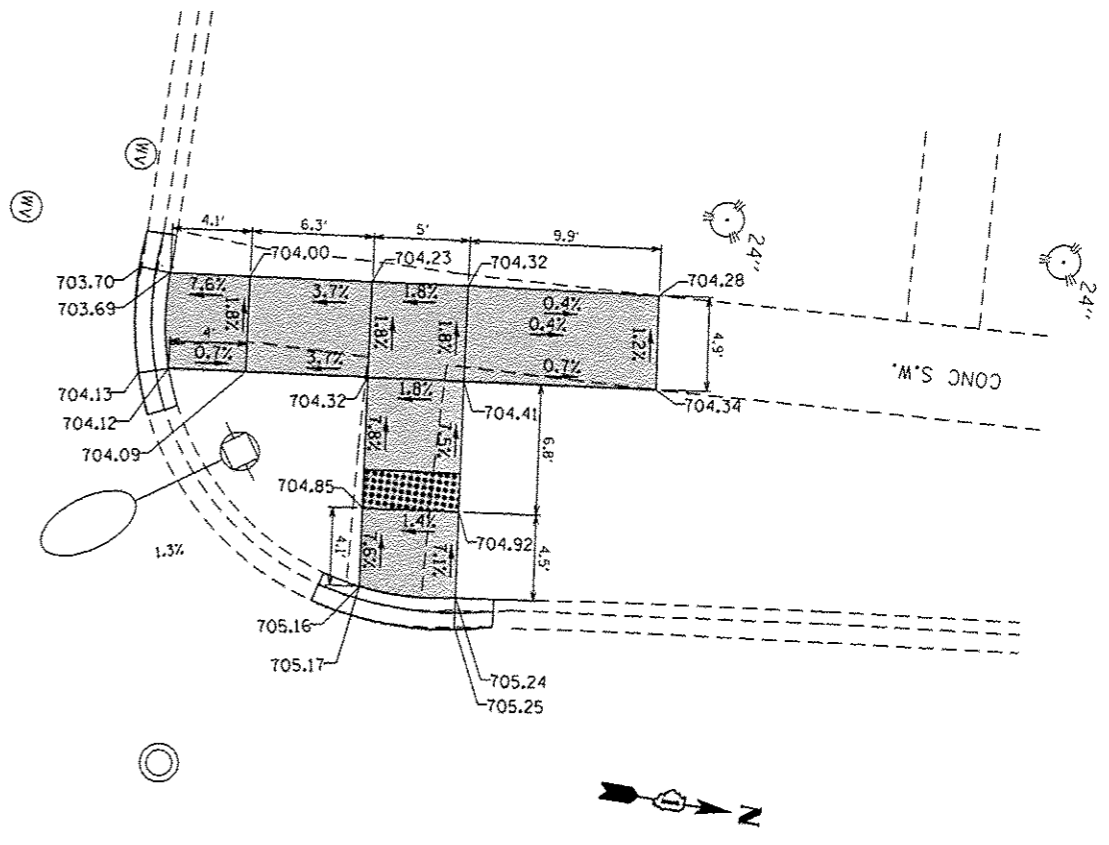
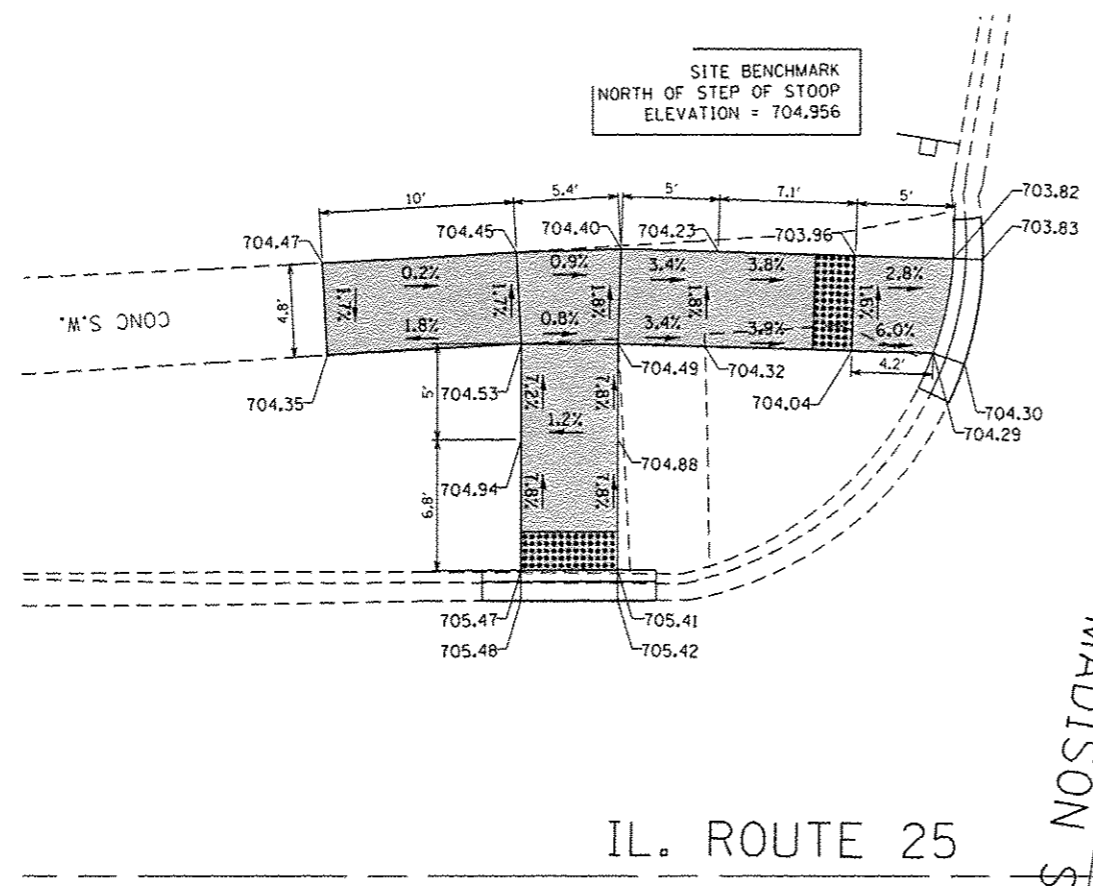
FILE NAME :	USER NAME :	DESIGNED :	REVISED :
g:\il\084EBID\INTEG\Illinois.gov\DOT\Documents\DOT Offices\District 1\Projects\DI17\DRAWING\Design\DI17416\shd-detail\01.dwg	paragood	-	-
		CHECKED :	REVISED :
		-	-
		DATE :	REVISED :
		-	-

STATE OF ILLINOIS  
 DEPARTMENT OF TRANSPORTATION

**SIDEWALK DETAIL PLAN**  
 IL 25 AT COLUMBIA STREET, SW AND NW (STA. 25+30)

F.A.U. RTE.	SECTION	COUNTY	TOTAL SHEETS	SHEET NO.
2503	(44, 48, 46EXT, & 52) R5-4	KANE	56	40F
CONTRACT NO. 62B89				
ILLINOIS FED. AID PROJECT				

Sheet Added 4-13-17



MADISON STREET

IL. ROUTE 25

REFERENCE BENCHMARK ELEV: 704.956  
 BENCHMARK LOCATION :  
 SW CORNER OF INTERSECTION,  
 NE CORNER OF STEP

**LEGEND**

- xx.xx' EXISTING LENGTH
- PROPOSED SIDE CURB
- ( ) EXISTING ELEVATION/SLOPE
- PROPOSED SIDEWALK
- DETECTABLE WARNINGS
- SIDEWALK REMOVAL  
REPLACE W/TOPSOIL & SOD

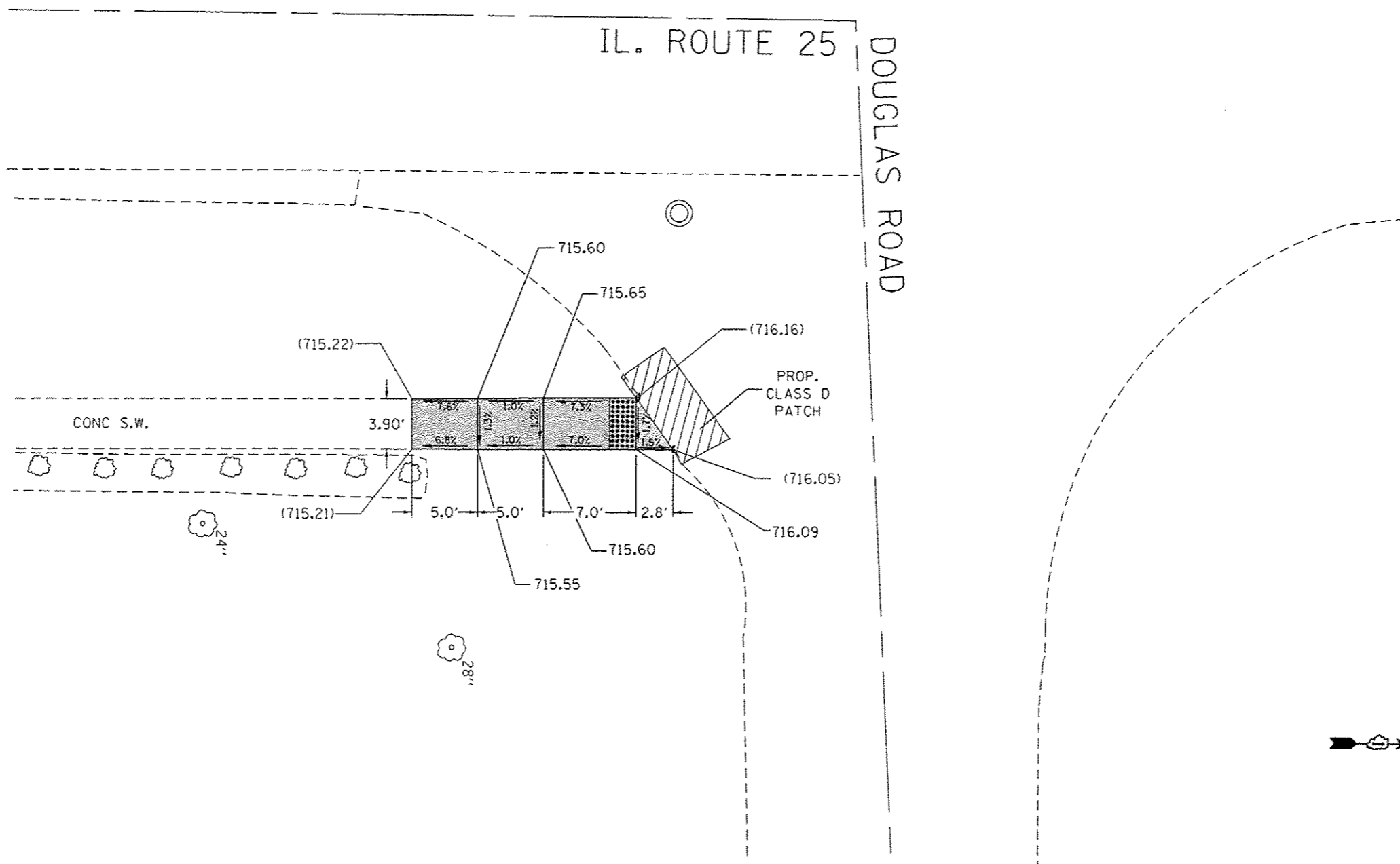
FILE NAME :	USER NAME : paragon	DESIGNED -	REVISED - <span style="font-size: small;">AP 4/12/17</span>
Default			

**STATE OF ILLINOIS  
 DEPARTMENT OF TRANSPORTATION**

**SIDEWALK DETAIL PLAN  
 IL 25 AT MADISON STREET, ALL CORNERS (STA. 35+00)**

F.A.U. RTE.	SECTION	COUNTY	TOTAL SHEETS	SHEET NO.
2503	(44, 48, 46EXT, 652) R5-4	KANE	56	400
ILLINOIS FED. AID PROJECT				

Sheet Added 4-13-17



REFERENCE BENCHMARK ELEV: 717.949

BENCHMARK LOCATION :  
NE INTERSECTION CORNER,  
NE BOLT

**LEGEND**

xx.xx'

EXISTING LENGTH

====

PROPOSED SIDE CURB

( )

EXISTING ELEVATION/SLOPE



PROPOSED SIDEWALK



DETECTABLE WARNINGS



SIDEWALK REMOVAL  
REPLACE W/TOPSOIL & SOD

STATE OF ILLINOIS  
DEPARTMENT OF TRANSPORTATION

**SIDEWALK DETAIL PLAN**

IL 25 AT DOUGLASS STREET, SE CORNER (STA. 56+00)

SCALE: SHEET OF SHEETS STA. TO STA.

F.A.U. RTE.	SECTION	COUNTY	TOTAL SHEETS	SHEET NO.
2503	(44, 48, 46EXT, & 52) RS-4	KANE	56	40H
ILLINOIS FED. AID PROJECT			CONTRACT NO. 62B89	

1

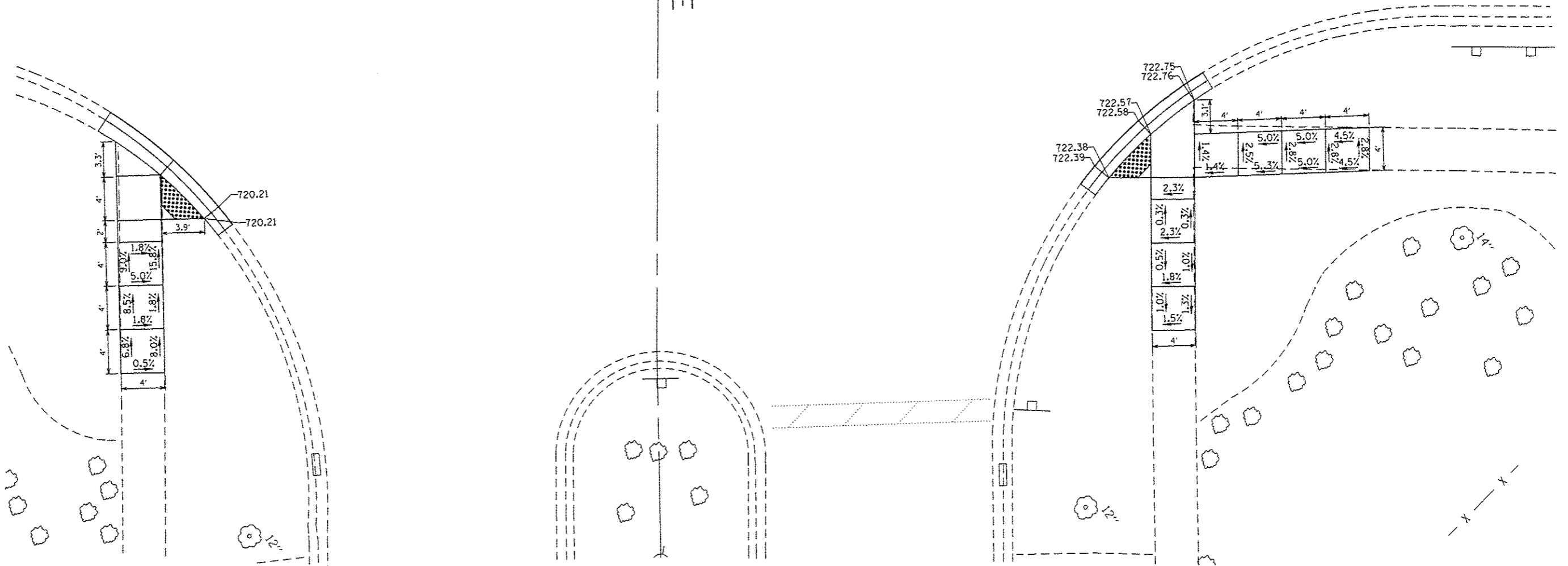
Sheet Added 4-13-17

FILE NAME :	USER NAME :	DESIGNED :	REVISED :
pw:\IL084EBI01\EGC\illinois.gov\PWIDOT\Documents\DOT Offices\District 1\Projects\DI17\DRAWING\Design\DI17416-sht-detail&B.dwg	paraynoal	-	-
Default		CHECKED -	REVISOR -
		DATE -	REVISOR -



IL. ROUTE 25 (CRISSEY AVENUE)

FOX RUN DRIVE



LEGEND

- xx.xx' EXISTING LENGTH
- ==== PROPOSED SIDE CURB
- ( ) EXISTING ELEVATION/SLOPE
- PROPOSED SIDEWALK
- DETECTABLE WARNINGS
- SIDEWALK REMOVAL  
REPLACE W/TOPSOIL & SOD

FILE NAME :	USER NAME :	DESIGNED :	REVISED :
p:\118446\BID\INTEG\Illinois.gov\PI\DOT\Documents\DOT Offices\District J\Projects\DI17	pareynol	-	- AP 4/12/17
		CHECKED :	REVISED :
		-	-
		DATE :	REVISED :
		-	-

STATE OF ILLINOIS  
DEPARTMENT OF TRANSPORTATION

SIDEWALK DETAIL PLAN

IL 25 AT FOX RUN DRIVE, SE AND NE (STA. 121+00)

SCALE: SHEET OF SHEETS STA. TO STA.

F.A.U. RTE.	SECTION	COUNTY	TOTAL SHEETS	SHEET NO.
2503	(44, 48, 46EXT.&52) RS-4	KANE	56	401
			CONTRACT NO. 62889	
ILLINOIS FED. AID PROJECT				

Sheet Added 4-13-17