

STATE OF ILLINOIS  
DEPARTMENT OF TRANSPORTATION

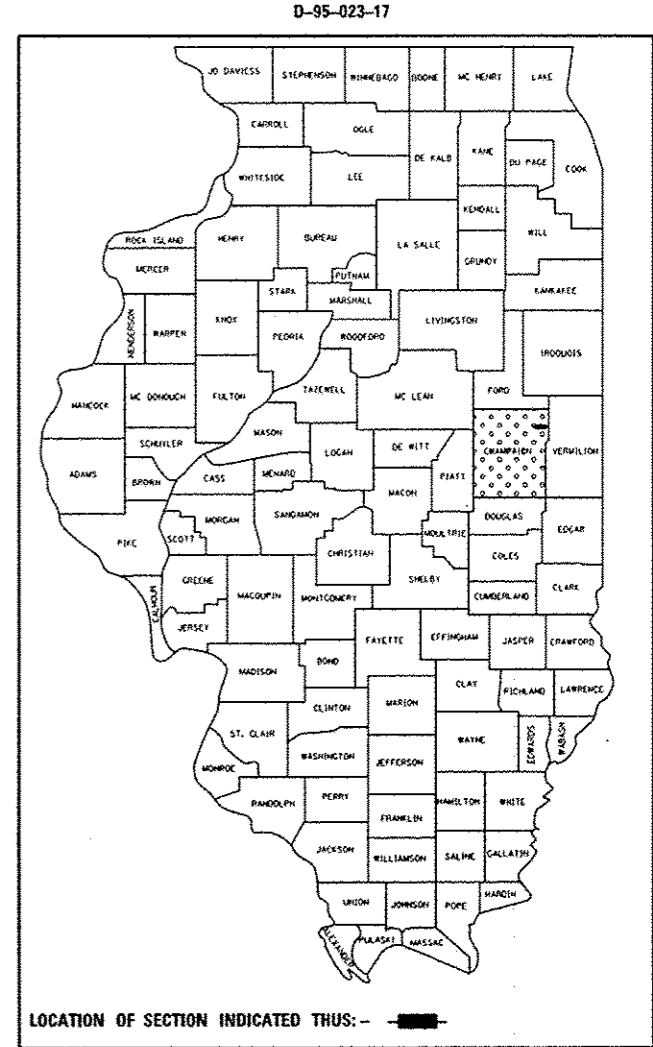
F.A.P. RTE.	SECTION	COUNTY	TOTAL SHEETS	SHEET NO.
709	(113)CLV	CHAMPAIGN	18	1
		ILLINOIS	CONTRACT NO. 70C66	

FOR INDEX OF SHEETS, SEE SHEET NO. 2  
FOR SUMMARY OF QUANTITIES, SEE SHEET NO. 3

# PROPOSED HIGHWAY PLANS

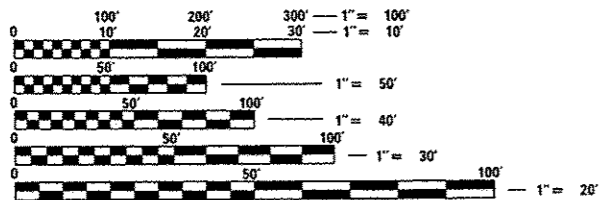
FAP ROUTE 709 (US 136)  
SECTION (113)CLV  
PROJECT STP-0709(032)  
CULVERT REPAIR  
CHAMPAIGN COUNTY

C-95-023-17



CURRENT	TRAFFIC	DATA
2017 ADT	2,050	
P.U. %	88.8	
S.U. %	6.3	
M.U. %	4.9	

DESIGN DESIGNATION  
N/A

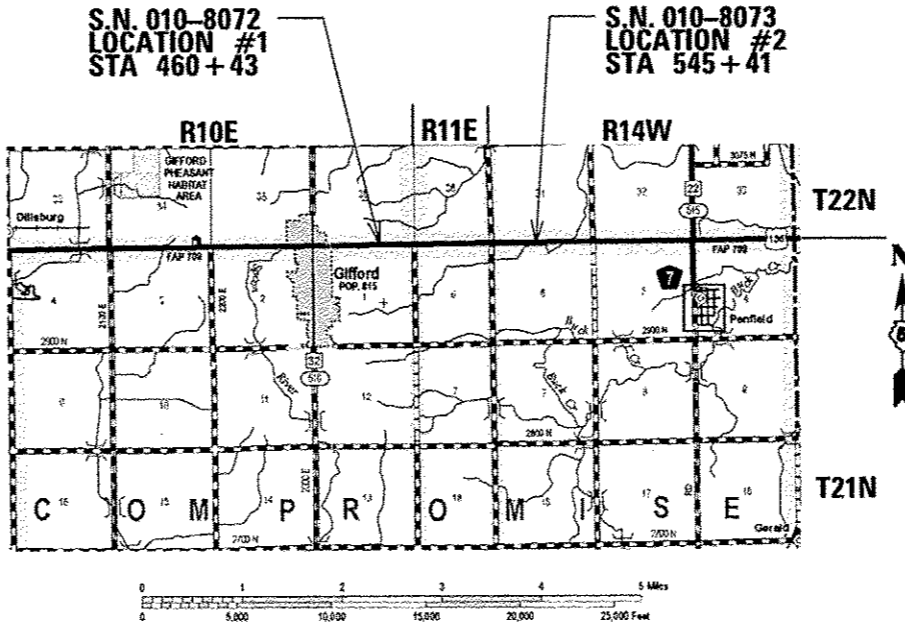


FULL SIZE PLANS HAVE BEEN PREPARED USING STANDARD ENGINEERING SCALES. REDUCED SIZED PLANS WILL NOT CONFORM TO STANDARD SCALES. IN MAKING MEASUREMENTS ON REDUCED PLANS, THE ABOVE SCALES MAY BE USED.

J.U.L.I.E.  
JOINT UTILITY LOCATION INFORMATION FOR EXCAVATION  
1-800-892-0123 HARWOOD, KERR AND  
OR 811 COMPROMISE TOWNSHIPS

PROJECT ENGINEER: NANCY FASIG  
SQUAD LEADER: BRIAN J. HOGAN  
DESIGNER: DEREK L. SCOTT  
217-465-4181  
CONTRACT NO. 70C66

DITCH EAST OF GIFFORD



GROSS LENGTH = 22.00 FT. = 0.004 MILE  
NET LENGTH = 22.00 FT. = 0.004 MILE

STATE OF ILLINOIS  
DEPARTMENT OF TRANSPORTATION

SUBMITTED JANUARY 27, 2017  
Kenneth A. Lavett  
REGIONAL ENGINEER

MAY 24, 2017  
Maureen M. Addis  
ENGINEER OF DESIGN AND ENVIRONMENT

MAY 24, 2017  
Kenneth A. Lavett  
DIRECTOR OF PROGRAM-DEVELOPMENT

PRINTED BY THE AUTHORITY  
OF THE STATE OF ILLINOIS

# INDEX OF SHEETS

SHEET NO.	DESCRIPTION
1	COVER SHEET
2	INDEX OF SHEETS
2	LIST OF STANDARDS
2	GENERAL NOTES
3	SUMMARY OF QUANTITIES
4-5	TYPICAL SECTIONS
6	PLAN SHEETS
7-8	SN 010-8072 DETAILS
9-10	SN 010-8073 DETAILS
11-12	STAGING DETAILS
13-14	WIDTH RESTRICTIONS
15-18	DISTRICT 5 DETAIL 7800AAAA- PAVEMENT MARKING MARKERS (RURAL & URBAN APPLICATIONS)

# GENERAL NOTES

G.N.-100  
ENGLISH UNITS OF MEASUREMENT SHALL GOVERN OVER AND SUPERSEDE ANY METRIC UNITS SHOWN IN THIS CONTRACT. WHERE INCLUDED, METRIC UNITS ARE FOR INFORMATION ONLY.

G.N.-100A  
ELECTRONIC FILES AND/OR ELECTRONIC SURVEY INFORMATION INCLUDING CADD FILES WILL NOT BE AVAILABLE TO THE CONTRACTOR.

G.N.-105.09A  
ALL ELEVATIONS SHOWN IN THE PLANS ARE BASED ON NORTH AMERICAN VERTICAL DATUM OF 1988. (NAVD 88)

NO COMMITMENTS

# HIGHWAY STANDARDS

STANDARD NO.	DESCRIPTION
000001 - 06	STANDARD SYMBOLS, ABBREVIATIONS AND PATTERNS
001001-02	AREAS OF REINFORCEMENT BARS
001006	DECIMAL OF AN INCH AND OF A FOOT
701006-05	OFF ROAD OPERATIONS, 2L, 2W, 15'(4.5m) TO 24"(600mm) FROM PAVEMENT EDGE
701301-04	LANE CLOSURE 2L, 2W, SHORT TIME OPERATIONS
701316-11	LANE CLOSURE 2L, 2W BRIDGE REPAIR, FOR SPEEDS >45
701901-06	TRAFFIC CONTROL DEVICES
780001-05	TYPICAL PAVEMENT MARKINGS
782006	GUARDRAIL AND BARRIER WALL REFLECTOR MOUNTING DETAILS

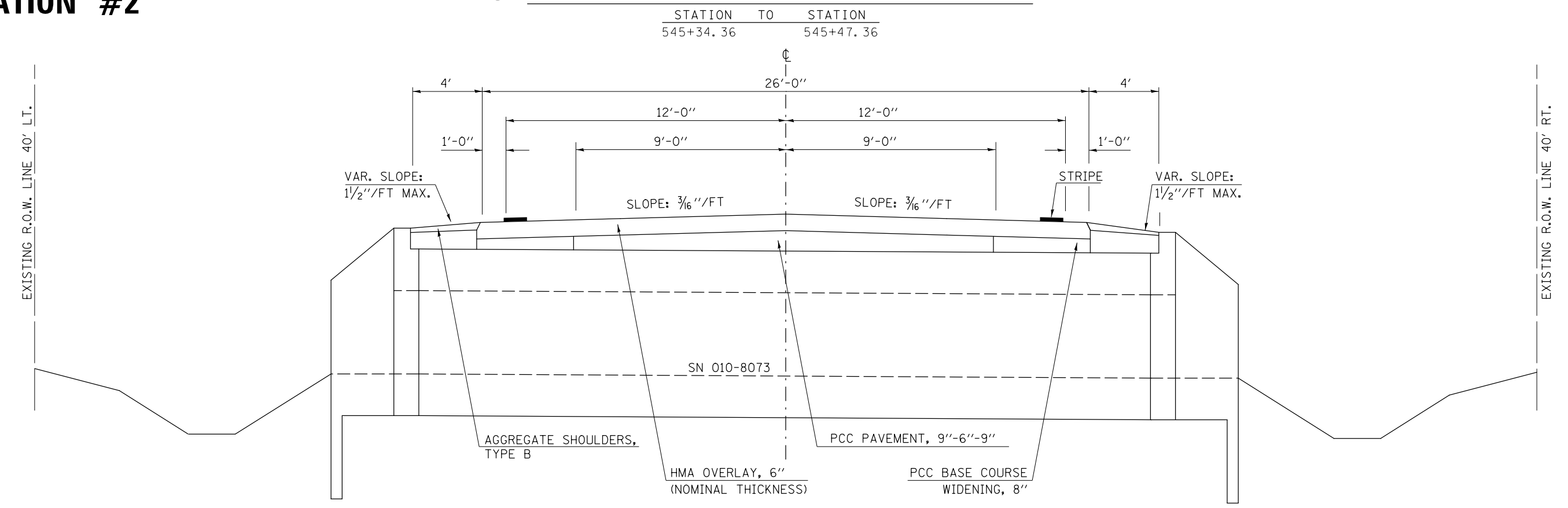
FILE NAME #	USER NAME # hoganbj	DESIGNED -	REVISED -	<b>STATE OF ILLINOIS DEPARTMENT OF TRANSPORTATION</b>	<b>INDEX OF SHEETS, LIST OF STANDARDS, AND GENERAL NOTES</b>	F.A.P. RTE.	SECTION	COUNTY	TOTAL SHEETS	SHEET NO.
p:\L204E81D\INTEG.ILLINOIS.GOV\PI\DOT\Documents\DOT Offices\District 5\Projects\0570\DRAWING\Design\0570\066-shs-index.dgn	CHECKED -	REVISED -	709			(11)CLV	CHAMPAIGN	18	2	
MODELNAME#	PLLOT SCALE = 40.0000 1 / in.	CHECKED -	REVISED -			CONTRACT NO. 70C66				
	PLLOT DATE = 1/31/2017	DATE -	REVISED -			SCALE:	SHEET 1 OF 1 SHEETS STA. TO STA.	[ILLINOIS] FED. AID PROJECT		





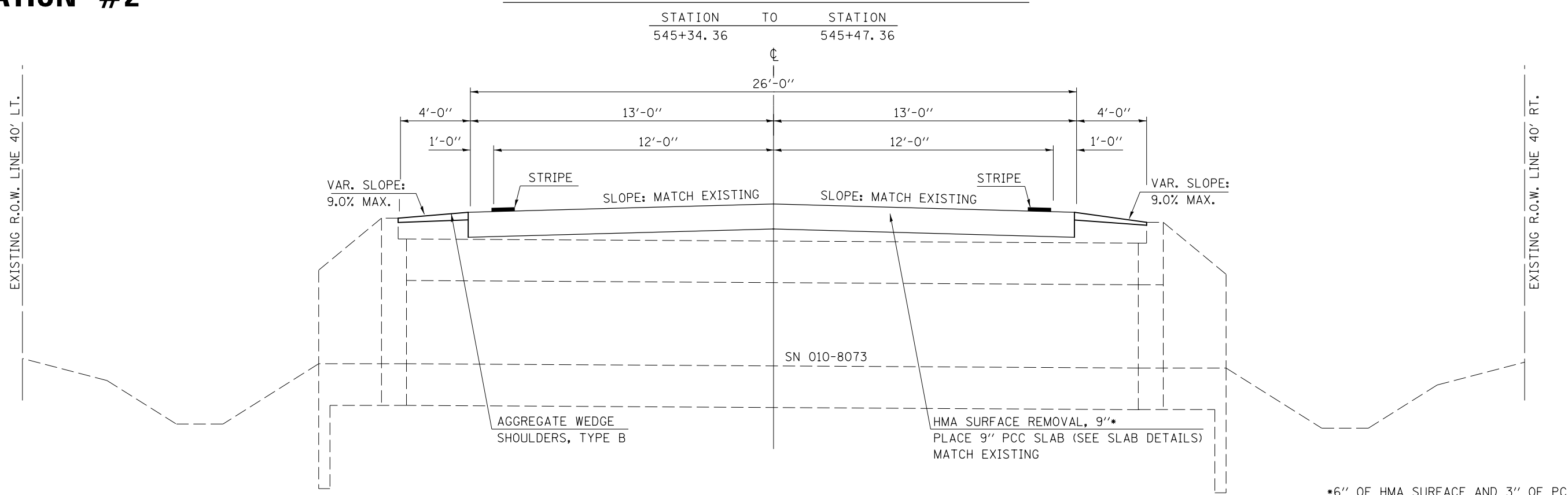
# LOCATION #2

## ② EXISTING TYPICAL CROSS SECTION



# LOCATION #2

## ② PROPOSED TYPICAL CROSS SECTION



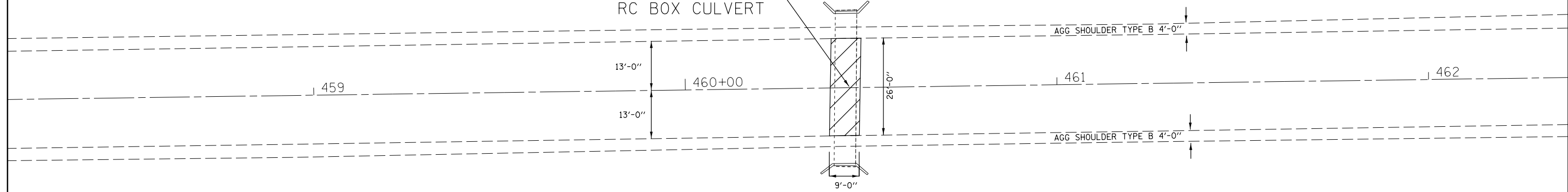
\*6" OF HMA SURFACE AND 3" OF PCC SURFACE

FILE NAME =	USER NAME = hoganbj	DESIGNED -	REVISED -	<b>STATE OF ILLINOIS DEPARTMENT OF TRANSPORTATION</b>	<b>TYPICAL SECTIONS</b>			F.A.P. RTE.	SECTION	COUNTY	TOTAL SHEETS	SHEET NO.
p:\11\084EBIDINTEG.illinois.gov\PIDOT\Documents\IDOT Offices\District 5\Projects\0570\CDRAWING\0570C66-shr-typical.dwg		CHECKED -	REVISED -		709	(113)CLV	CHAMPAIGN	18	5			
PLOT SCALE = 40.0000' / in.		CHECKED -	REVISED -		CONTRACT NO. 70C66							
*MODELNAME#	PLOT DATE = 1/30/2017	DATE -	REVISED -		SCALE:	SHEET 2 OF 2 SHEETS	STA. TO STA.	ILLINOIS FED. AID PROJECT				

SEC. 36, T 22N, R 10E, 3RD PM

**LOCATION #1**  
 FAP ROUTE 709 (US 136)  
 SECTION (113) CLV  
 CHAMPAIGN COUNTY  
 S.N. 010-8072

S.N. 010-8072  
 STA 460+43  
 EXISTING 6'X3'  
 RC BOX CULVERT



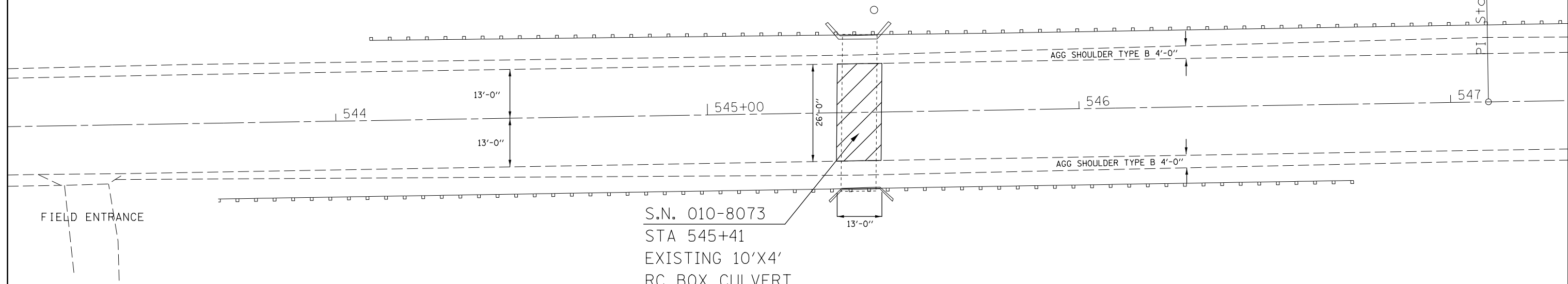
 **AREA OF IMPROVEMENT**  
 SEE SLAB DETAILS

SEC. 1, T 21N, R 10E, 3RD PM

SEC. 31, T 22N, R 14W, 2ND PM

**LOCATION #2**  
 FAP ROUTE 709 (US 136)  
 SECTION (113) CLV  
 CHAMPAIGN COUNTY  
 S.N. 010-8073

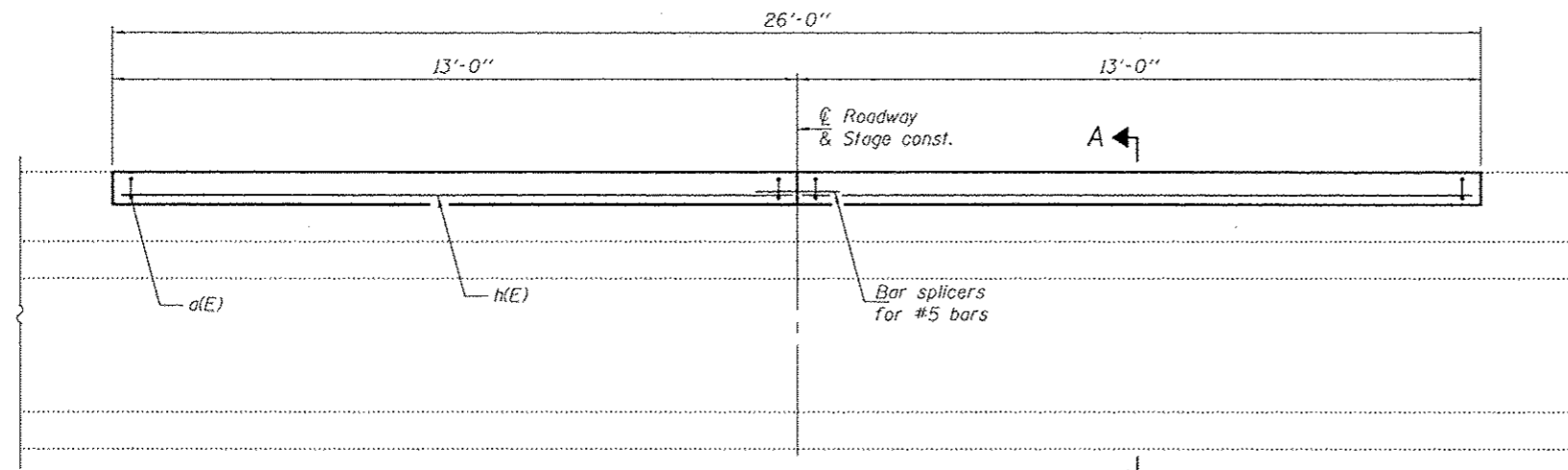
S.N. 010-8073  
 STA 545+41  
 EXISTING 10'X4'  
 RC BOX CULVERT



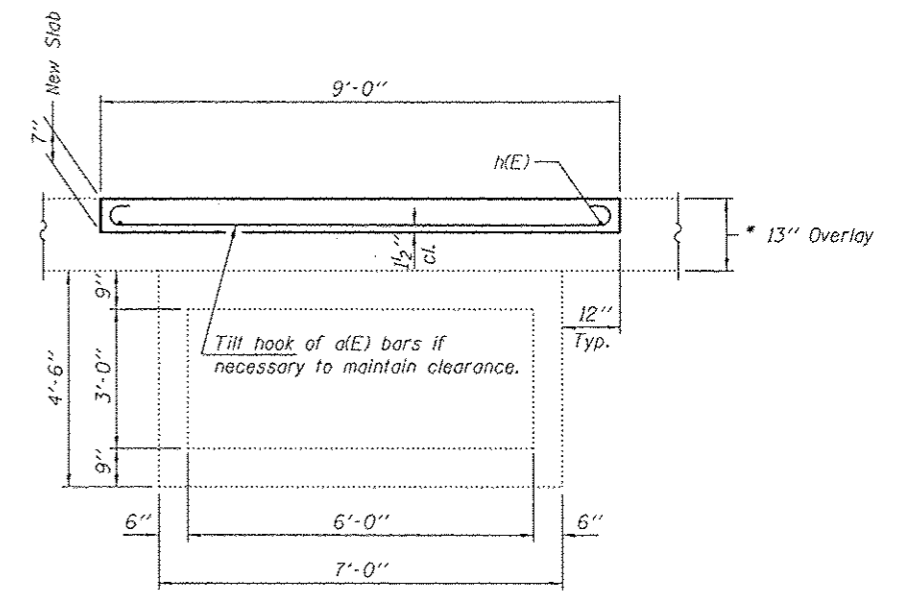
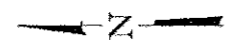
 **AREA OF IMPROVEMENT**  
 SEE SLAB DETAILS

SEC. 6, T 21N, R 14W, 2ND PM

FILE NAME =	USER NAME = hoganbj	DESIGNED -	REVISED -	<b>STATE OF ILLINOIS</b> <b>DEPARTMENT OF TRANSPORTATION</b>	<b>PLAN SHEET</b> <b>LOCATION #1 AND #2</b>			F.A.P. RTE.	SECTION	COUNTY	TOTAL SHEETS	SHEET NO.
p:\11\084EBID\INTEG\Illinois.gov\PWIDOT\Documents\DOT Offices\District 5\Projects\0570\CDRAWING\Design\0570C66-shr-plan.dgn		CHECKED -	REVISED -		709	(113)CLV	CHAMPAIGN	18	6			
		DATE -	REVISED -		CONTRACT NO. 70C66			ILLINOIS FED. AID PROJECT				
*MODELNAME#	PLOT DATE = 1/26/2017				SCALE:	SHEET 1	OF 1 SHEETS	STA.	TO STA.			

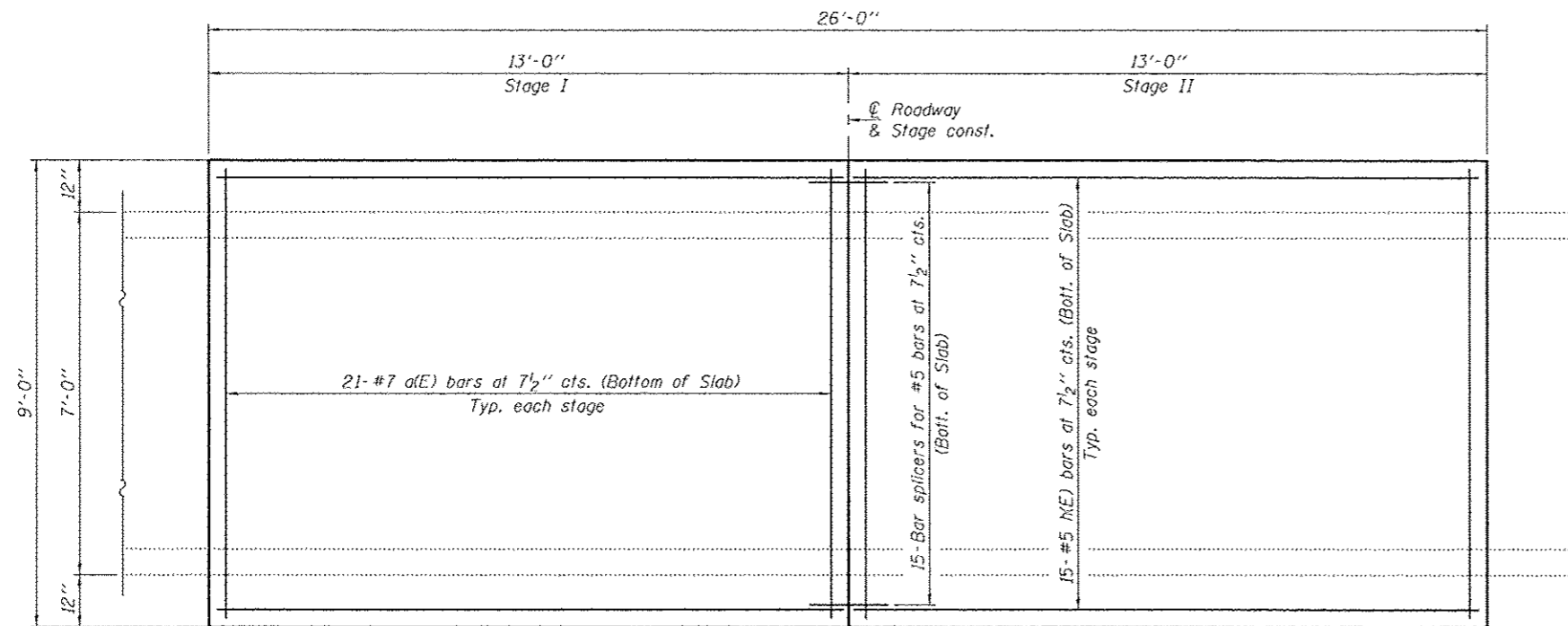


LONGITUDINAL SECTION



SECTION A-A

\* Remove 7" of existing overlay and replace with 7" concrete slab as shown. Slope to match roadway. Cost of removal included with Hot-Mix Asphalt Surface Removal, 7".



PLAN

GENERAL NOTES

Plan dimensions and details relative to existing plans are subject to nominal construction variations. The Contractor shall field verify existing dimensions and details affecting new construction and make necessary approved adjustments prior to construction or ordering of materials. Such variations shall not be cause for additional compensation for a change in scope of the work, however, the Contractor will be paid for the quantity actually furnished at the unit price bid for the work.

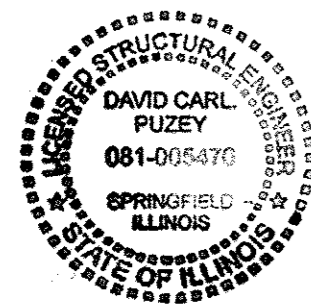
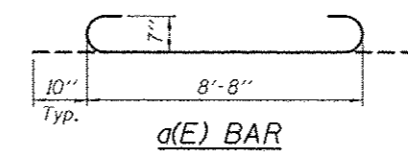
Reinforcement bars designated (E) shall be epoxy coated. The deck surface shall have its final finish lined according to Article 420.11(e)(1) of the Standard Specifications. Cost included with Concrete Superstructure.

DESIGN STRESSES

FIELD UNITS  
 $f'_c = 3,500$  psi  
 $f_y = 60,000$  psi (Reinf.)

BILL OF MATERIAL

Bar	No.	Size	Length	Shape
a(E)	42	#7	10'-4"	
h(E)	30	#5	12'-8"	
Bar Splicers	Each		15	
Hot-Mix Asphalt Surface Removal, 7"	Sq. Yds.		26.0	
Reinforcement Bars, Epoxy Coated	Pound		1280	
Concrete Superstructure	Cu. Yds.		5.1	



EXPIRES 11-30-2018

DESIGNED *David Carl Puze*  
 CHECKED *Dominic Bellone*  
 DRAWN *balvo*  
 CHECKED *DAB VUC*

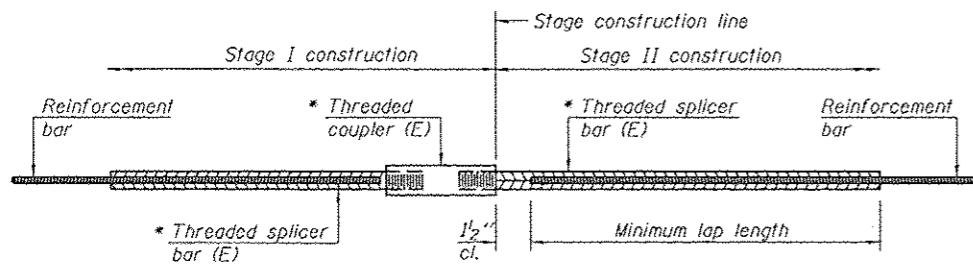
PASSED *David Carl Puze*  
 ENGINEER OF BRIDGES AND STRUCTURES

DATE MARCH 23, 2017  
 REVISED  
 REVISED

STATE OF ILLINOIS  
 DEPARTMENT OF TRANSPORTATION

SLAB DETAILS  
 FAP 709  
 SN 010-8072  
 SHEET NO. 1 OF 2 SHEETS

F.A.P. RTE.	SECTION	COUNTY	TOTAL SHEETS	SHEET NO.
709	1113CLV	CHAMPAIGN	18	7
CONTRACT NO. 70C66			ILLINOIS FED. AID PROJECT	

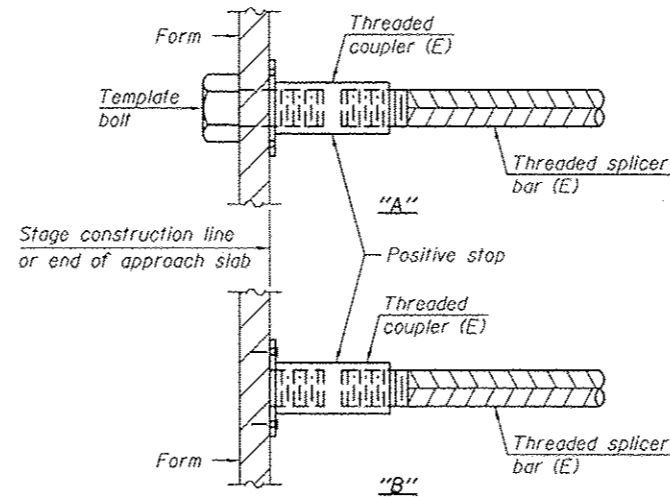


**STANDARD BAR SPLICER ASSEMBLY**

Threaded splicer bar length = min. lap length + 1/2" + thread length

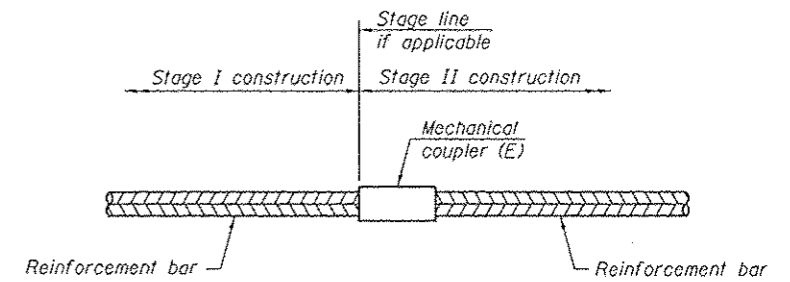
\* Epoxy not required on Bar Splicer Assembly components used in conjunction with black bars.

Location	Bar size	No. assemblies required	Minimum lap length
Bottom of slab	#5	15	3'-2"



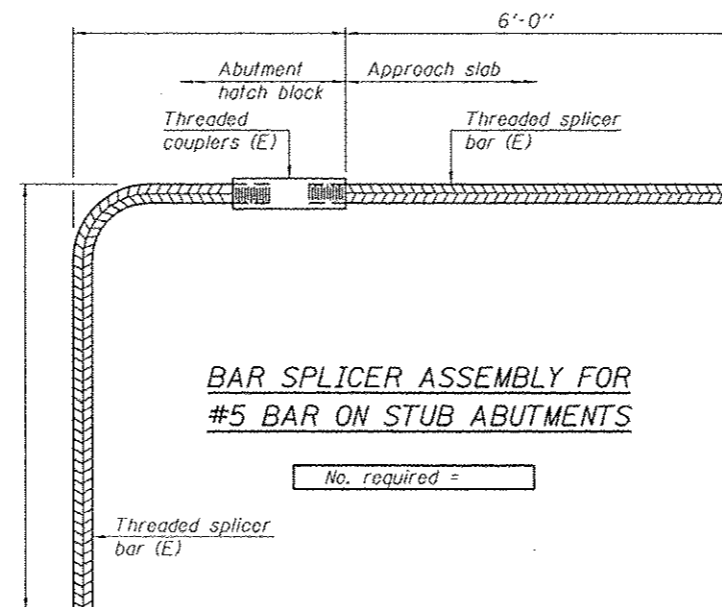
**INSTALLATION AND SETTING METHODS**

"A" : Set bar splicer assembly by means of a template bolt.  
 "B" : Set bar splicer assembly by nailing to wood forms or cementing to steel forms.  
 (E) : Indicates epoxy coating.



**STANDARD MECHANICAL SPLICER**

Location	Bar size	No. assemblies required



**BAR SPLICER ASSEMBLY FOR #5 BAR ON STUB ABUTMENTS**

No. required =

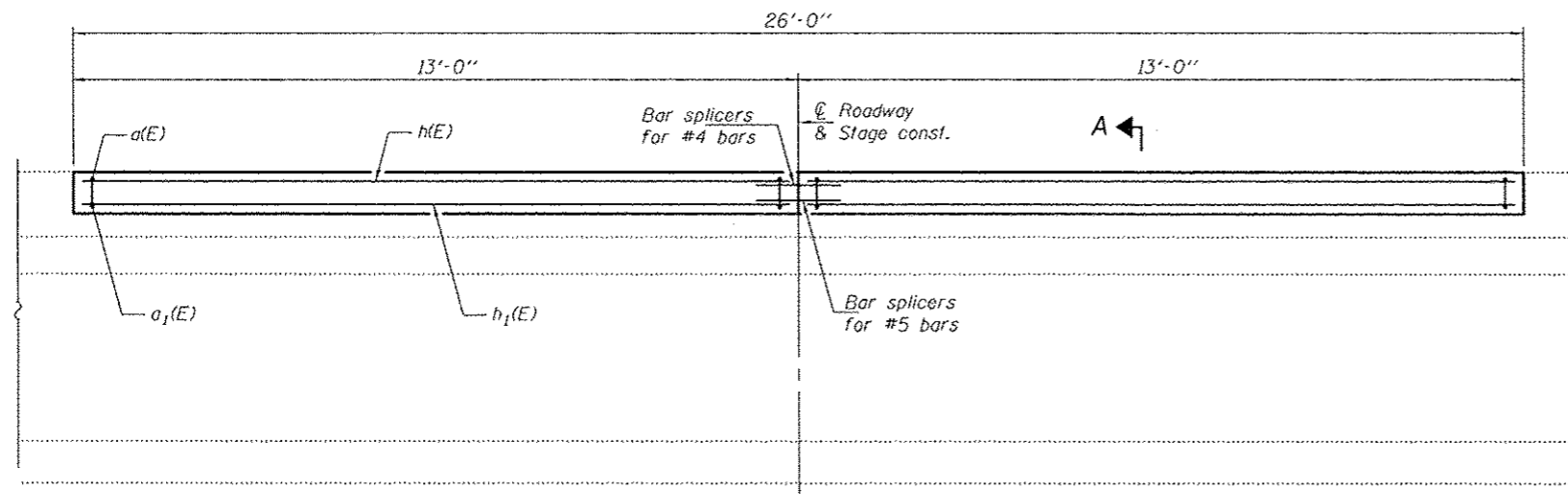
**NOTES**

Splicer bars shall be deformed with threaded ends and have a minimum 60 ksi yield strength.  
 All reinforcement shall be lapped and tied to the splicer bars.  
 Bar splicer assemblies shall be epoxy coated according to the requirements for reinforcement bars. See Section 508 of the Standard Specifications.  
 See approved list of bar splicer assemblies and mechanical splicers for alternatives.

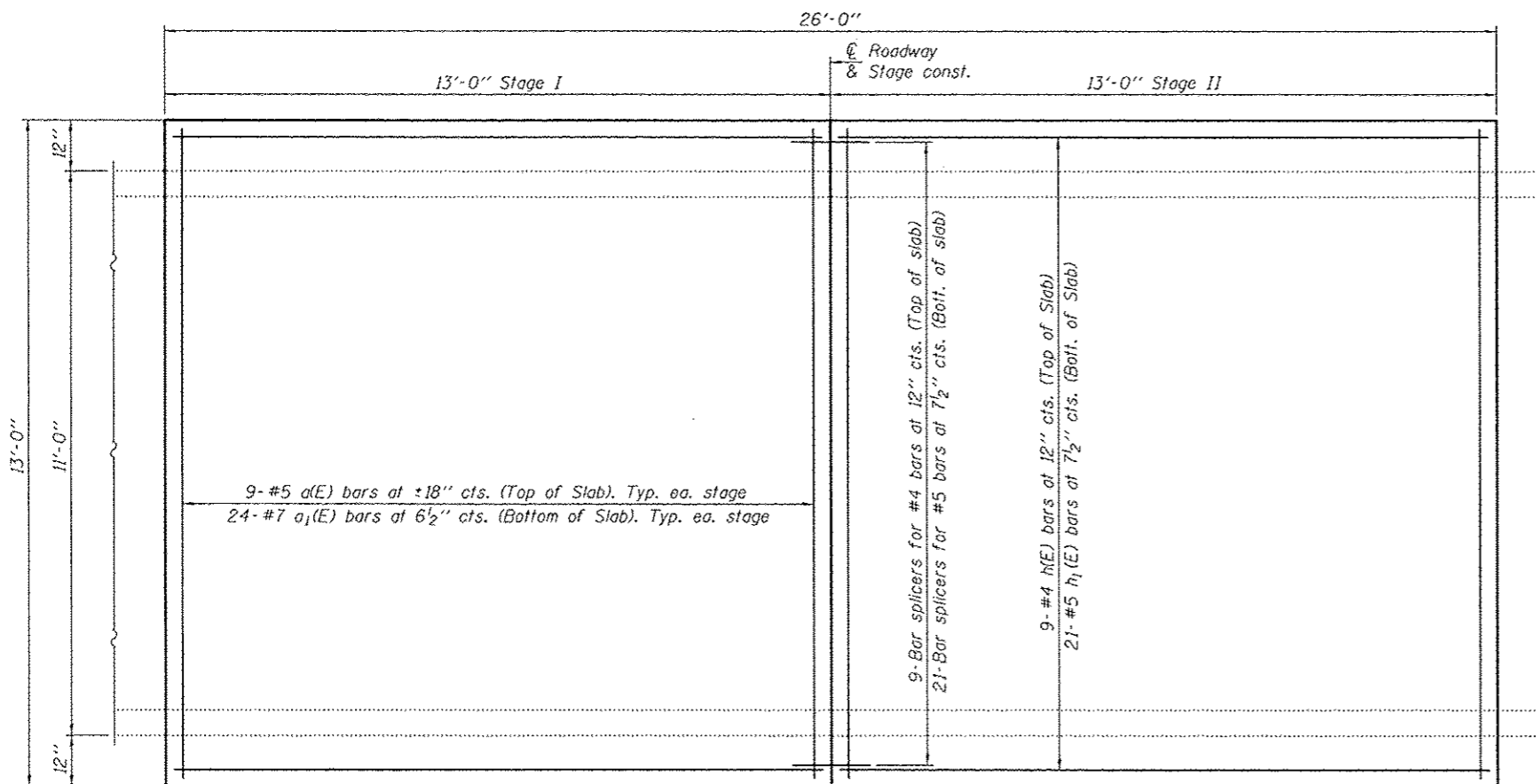
BSD-1 11-22-2016

DESIGNED VHV	EXAMINED	DATE MARCH 23, 2017	STATE OF ILLINOIS DEPARTMENT OF TRANSPORTATION	BAR SPLICER ASSEMBLY AND MECHANICAL SPLICER DETAILS SN 010-8072	F.A.P. RTE.	SECTION	COUNTY	TOTAL SHEETS	SHEET NO.
CHECKED DAB	PASSED	REVISOR			709	1113JLV	CHAMPAIGN	18	8
DRAWN Daliva	ENGINEER OF BRIDGES AND STRUCTURES	REVISOR	SHEET NO. 2 OF 2 SHEETS		CONTRACT NO. 70C66				
CHECKED VHV DAB					ILLINOIS FED. AID PROJECT				

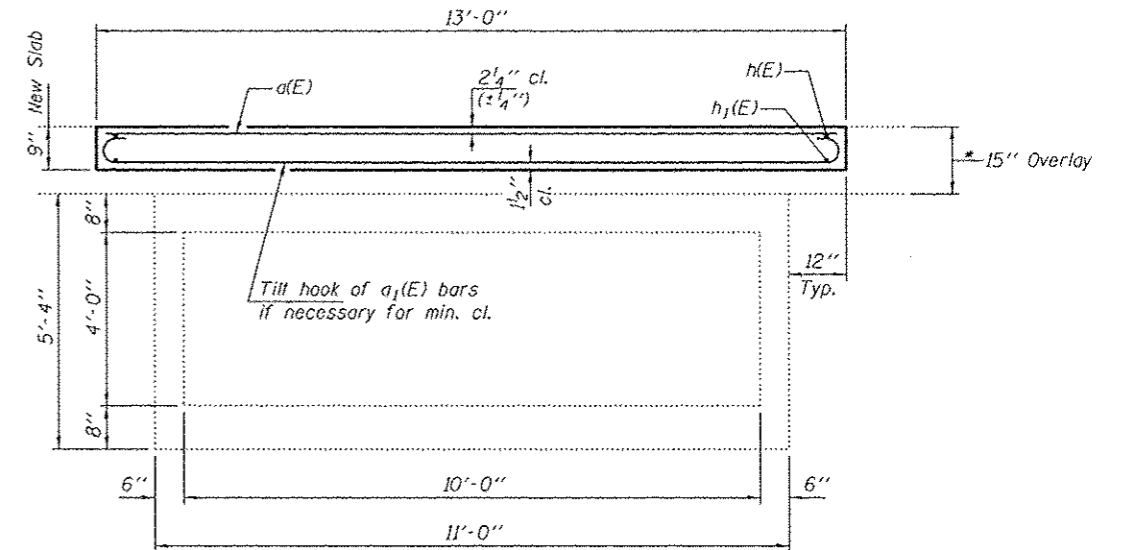




LONGITUDINAL SECTION



PLAN



SECTION A-A

\* Remove 6" of existing HMA overlay and 3" of existing PCC pavement and replace with 9" concrete slab as shown. Slope to match roadway. Cost of removal included with Partial Depth Removal (Variable Depth).

GENERAL NOTES

Plan dimensions and details relative to existing plans are subject to nominal construction variations. The Contractor shall field verify existing dimensions and details affecting new construction and make necessary approved adjustments prior to construction or ordering of materials. Such variations shall not be cause for additional compensation for a change in scope of the work, however, the Contractor will be paid for the quantity actually furnished at the unit price bid for the work.

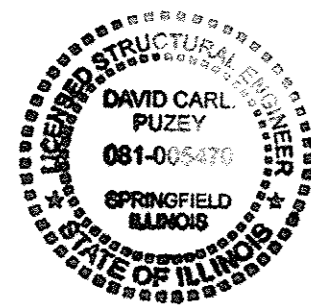
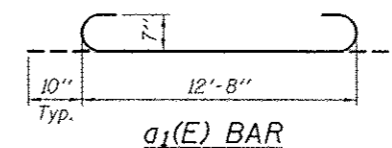
Reinforcement bars designated (E) shall be epoxy coated. The deck surface shall have its final finish tined according to Article 420.1(k)(1) of the Standard Specifications. Cost included with Concrete Superstructure.

BILL OF MATERIAL

Bar	No.	Size	Length	Shape	
a1(E)	18	#5	12'-8"	—	
a1(E)	48	#7	14'-4"	⌋	
h(E)	18	#4	12'-8"	—	
h1(E)	42	#5	12'-8"	—	
Bar Splicers				Each	30
Hot-Mix Asphalt Surface Removal, 7"				Sq. Yds.	37.6
Reinforcement Bars, Epoxy Coated				Pound	2350
Concrete Superstructure				Cu. Yds.	9.4

DESIGN STRESSES

FIELD UNITS  
 $f'_c = 3,500$  psi  
 $f_y = 60,000$  psi (Reinf.)



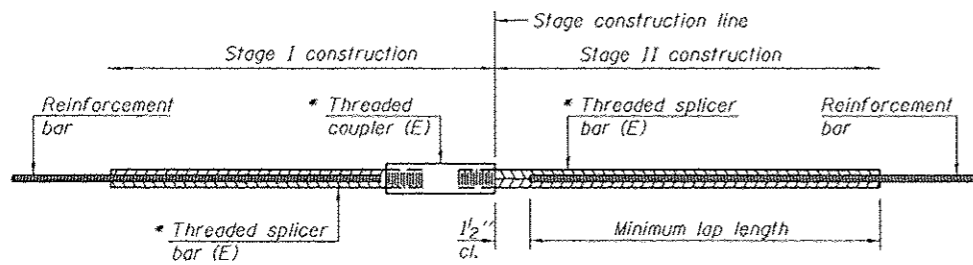
EXPIRES 11-30-2018

DESIGNED	Victor H. Vejit	DATE	MARCH 23, 2017
CHECKED	Dominic Belluso	REVISIONS	
DRAWN	batvo	REVISIONS	
CHECKED	DAR	REVISIONS	

STATE OF ILLINOIS  
 DEPARTMENT OF TRANSPORTATION

SLAB DETAILS  
 FAP 709  
 SN 010-8073  
 SHEET NO. 1 OF 2 SHEETS

F.A.P. RTE.	SECTION	COUNTY	TOTAL SHEETS	SHEET NO.
709	1131CLV	CHAMPAIGN	18	9
CONTRACT NO. 70C66				
ILLINOIS FED. AID PROJECT				

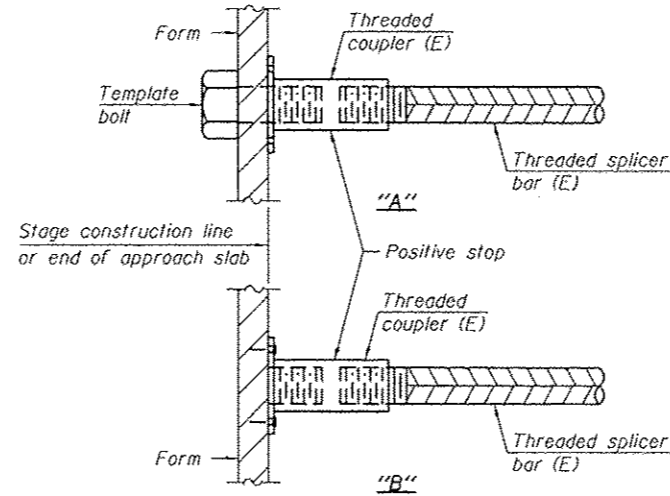


**STANDARD BAR SPLICER ASSEMBLY**

Threaded splicer bar length = min. lap length + 1/2" + thread length

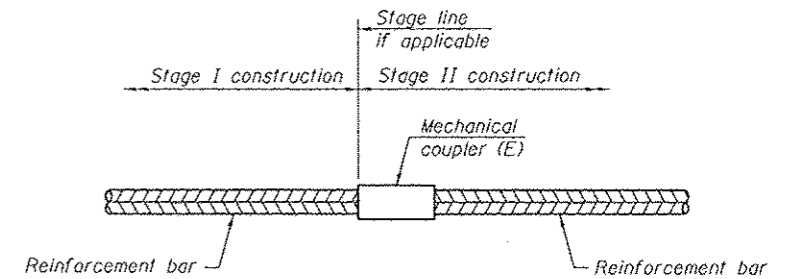
\* Epoxy not required on Bar Splicer Assembly components used in conjunction with black bars.

Location	Bar size	No. assemblies required	Minimum lap length
Top of slab	#4	9	2'-7"
Bottom of slab	#5	21	3'-2"



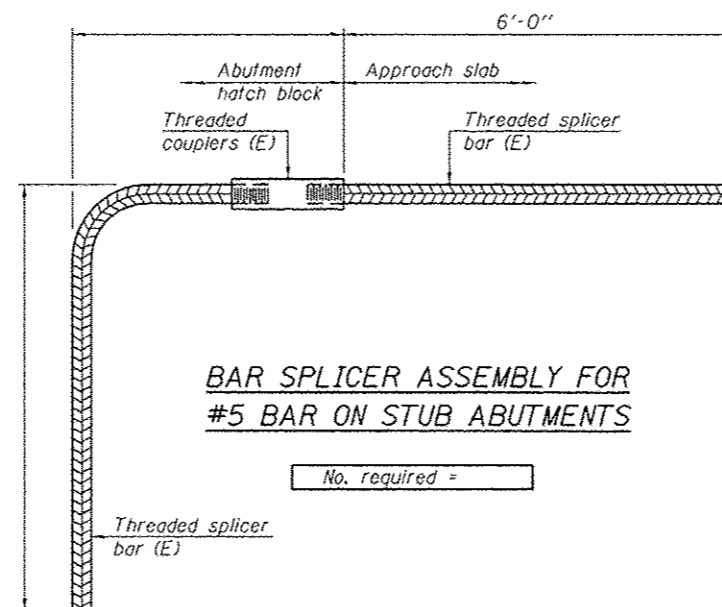
**INSTALLATION AND SETTING METHODS**

"A" : Set bar splicer assembly by means of a template bolt.  
 "B" : Set bar splicer assembly by nailing to wood forms or cementing to steel forms.  
 (E) : Indicates epoxy coating.



**STANDARD MECHANICAL SPLICER**

Location	Bar size	No. assemblies required



**BAR SPLICER ASSEMBLY FOR #5 BAR ON STUB ABUTMENTS**

No. required =

**NOTES**

Splicer bars shall be deformed with threaded ends and have a minimum 60 ksi yield strength.  
 All reinforcement shall be lapped and tied to the splicer bars.  
 Bar splicer assemblies shall be epoxy coated according to the requirements for reinforcement bars. See Section 508 of the Standard Specifications.  
 See approved list of bar splicer assemblies and mechanical splicers for alternatives.

BSD-1 11-22-2016

DESIGNED VHV  
 CHECKED DAB  
 DRAWN baliva  
 CHECKED VHV DAB

PASSED

*Carl Progg*  
 ENGINEER OF BRIDGES AND STRUCTURES

DATE MARCH 23, 2017

REVISED  
 REVISED

STATE OF ILLINOIS  
 DEPARTMENT OF TRANSPORTATION

BAR SPLICER ASSEMBLY AND MECHANICAL SPLICER DETAILS  
 SN 010-8073

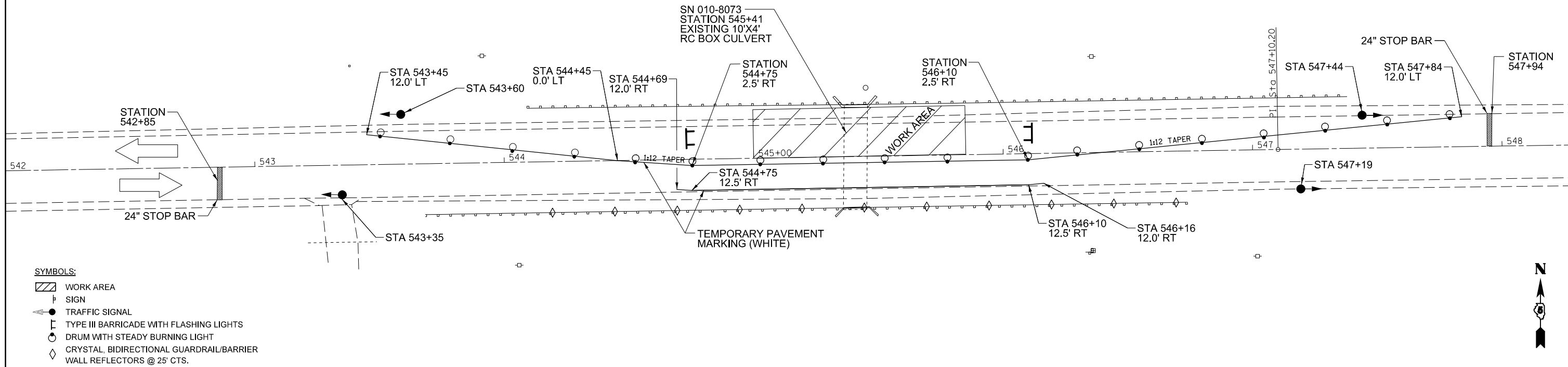
SHEET NO. 2 OF 2 SHEETS

F.A.P. RTE.	SECTION	COUNTY	TOTAL SHEETS	SHEET NO.
709	(113)CLV	CHAMPAIGN	16	10
ILLINOIS FED. AID PROJECT			CONTRACT NO. 70C66	

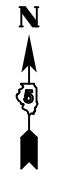


# STAGE ONE LOCATION #2

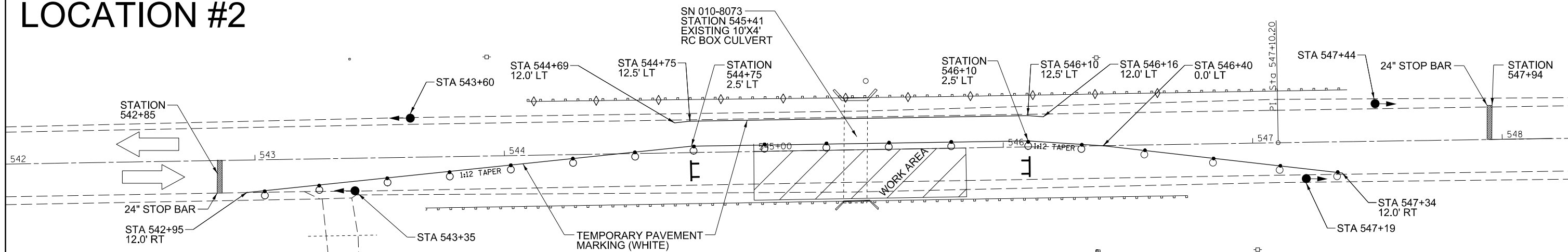
FAP ROUTE 709 (US 136)  
SECTION (113) CLV  
CHAMPAIGN COUNTY  
STA 545+41  
LOCATION #2



- SYMBOLS:**
- WORK AREA
  - SIGN
  - TRAFFIC SIGNAL
  - TYPE III BARRICADE WITH FLASHING LIGHTS
  - DRUM WITH STEADY BURNING LIGHT
  - CRYSTAL, BIDIRECTIONAL GUARDRAIL/BARRIER WALL REFLECTORS @ 25' CTS.



# STAGE TWO LOCATION #2

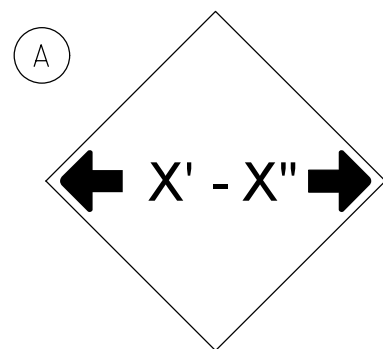


- GENERAL NOTES:**
- ERECT SIGNS, TRAFFIC SIGNALS, TRAFFIC CONTROL DEVICES ETC. ACCORDING TO TRAFFIC CONTROL STANDARD 701316 AND AS SHOWN ON THIS PLAN.
  - ALL SIGNS IN CONFLICT WITH THIS STAGE OF CONSTRUCTION SHALL BE COVERED.
  - ALL STRIPING IN CONFLICT WITH THIS STAGE OF CONSTRUCTION SHALL BE BLACKED OUT.
  - PLACING, MAINTAINING AND REMOVING TEMPORARY PAVEMENT MARKINGS WILL NOT BE PAID FOR SEPARATELY BUT SHALL BE INCLUDED IN THE COST FOR TRAFFIC CONTROL AND PROTECTION STANDARD 701316.
  - PLACE TEMPORARY PAVEMENT MARKING LINE TO ALLOW FOR A 10'-0" TRAFFIC LANE.
  - TRAFFIC CONTROL AND PROTECTION, STANDARD 701316 AND ALL TEMPORARY BRIDGE TRAFFIC SIGNALS FOR STAGE I & II AT THIS LOCATION WILL BE MEASURED FOR PAYMENT ON AN EACH BASIS AND WILL BE PAID FOR AT THE CONTRACT UNIT PRICE OF ONE (1.0) EACH. NO ADDITIONAL COMPENSATION WILL BE ALLOWED.

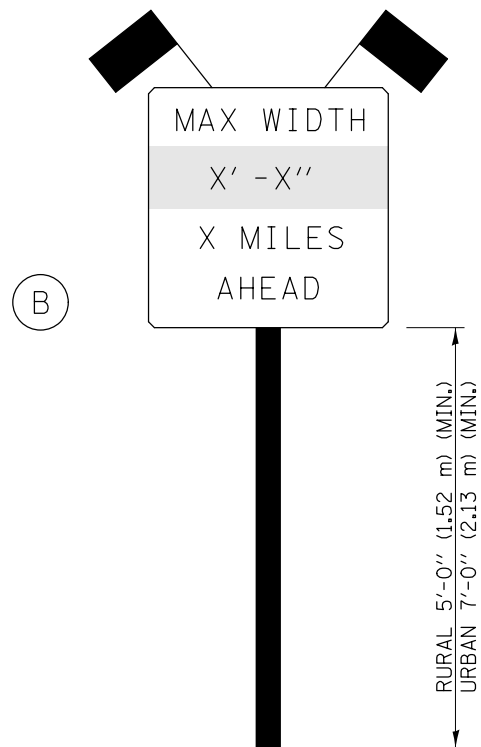


FILE NAME =	USER NAME = hoganbj	DESIGNED -	REVISED -	<b>STATE OF ILLINOIS DEPARTMENT OF TRANSPORTATION</b>	<b>STAGING LOCATION #2</b>			F.A.P. RTE.	SECTION	COUNTY	TOTAL SHEETS	SHEET NO.
pw:\IL084EBIDINTEG\illinois.gov\PIDOT\Documents\DOT Offices\District 5\Projects\0570\Drawings\Design\0570C66-sh1-staging.dwg	DRAWN	REVISIONS	REVISIONS					709	(113)CLV	CHAMPAIGN	18	12
PLOT SCALE = 40.0000' / in.	CHECKED -	REVISIONS	REVISIONS		CONTRACT NO. 70C66			ILLINOIS FED. AID PROJECT				
#MODELNAME#	DATE -	REVISIONS	REVISIONS		SCALE:	SHEET 2	OF 2 SHEETS	STA.	TO STA.			

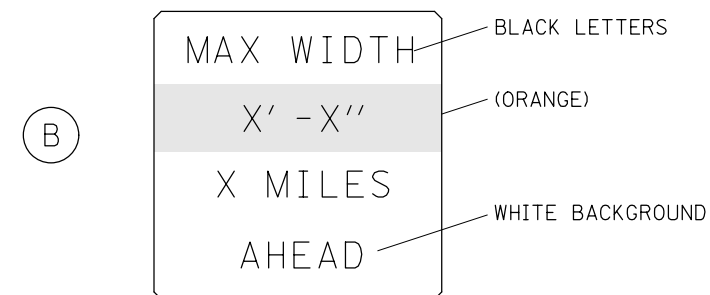




W12-2(0)-48"x48"(1200x1200)



SIGN PANEL, TYPE II



W12-I103(0)-48"x48"(1200x1200)  
"D" LETTERS/NUMBERS

SIGN (A) 2 SIGNS - W12-2(0)-48"x48"(1200x1200) ARE TO BE PLACED AS SHOWN IN THE PLANS OR AS DIRECTED BY THE ENGINEER.

SIGN (B) 2 SIGNS - (SIGN PANEL, TYPE II) AS SHOWN ARE TO BE PLACED AS SHOWN IN THE PLANS OR AS DIRECTED BY THE ENGINEER.

GENERAL NOTES

1. ALL TRAFFIC CONTROL DEVICES SHALL BE FURNISHED, ERECTED AND MAINTAINED BY THE CONTRACTOR.
2. ALL (B) SIGNS SHALL HAVE FLAGS INSTALLED UNLESS OTHERWISE DIRECTED.
3. LOCATIONS OF TRAFFIC CONTROL DEVICES MAY BE ADJUSTED BY THE ENGINEER.
4. ALL TRAFFIC CONTROL SHOWN ON THIS SHEET SHALL BE PAID FOR AT THE CONTRACT LUMP SUM PRICE FOR WIDTH RESTRICTION SIGNING.
5. ALL SIGNS SHALL BE POST MOUNTED UNLESS OTHERWISE DIRECTED.
6. ALL SIGNS SHOWN ORANGE (O) SHALL BE FLUORESCENT ORANGE.
7. ALL SIGNS SHOWN SHALL CONSIST OF THE CURRENT RETROREFLECTIVE SHEETING REQUIREMENTS AS OUTLINED IN SECTION 1106.01 OF THE STANDARD SPECIFICATIONS BOOK.

Note: All dimensions are in INCHES (millimeters) unless otherwise shown.

FILE NAME =	USER NAME = hoganbj	DESIGNED -	REVISED - 03/11 -KJT
pw:\11\084EBIDINTEG.illinois.gov\PIWIDOT\Documents\DOT Offices\District 5\Projects\0570C66\Drawings\Design\0570C66-Shr-WRD.dgn		CHECKED -	REVISED - 05/08
		PLOT SCALE = 40.0000' / in.	REVISED - 10/08 - KJT
		DATE -	REVISED - 7/09 - KJT

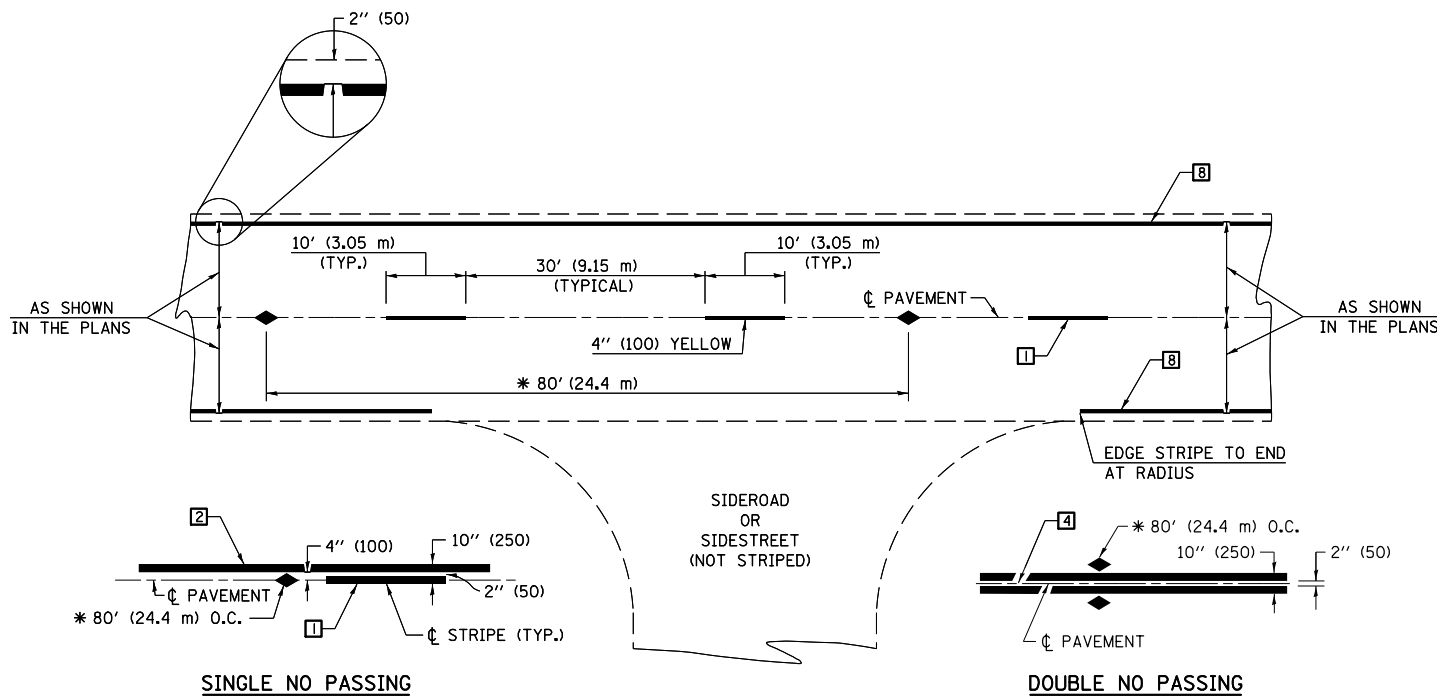
STATE OF ILLINOIS  
DEPARTMENT OF TRANSPORTATION

WIDTH RESTRICTION DETAIL

SCALE: SHEET 2 OF 2 SHEETS STA. TO STA.

**DISTRICT 5 DETAIL NO. X7200201**

F.A.P. RTE.	SECTION	COUNTY	TOTAL SHEETS	SHEET NO.
709	(113)CLV	CHAMPAIGN	18	14
FED. ROAD DIST. NO. ILLINOIS FED. AID PROJECT			CONTRACT NO. 70C66	



\* REDUCE TO 40' (12.2 m) O.C. ON CURVES WITH POSTED OR ADVISORY SPEEDS OF 45 mph (70 km/h) OR LESS.

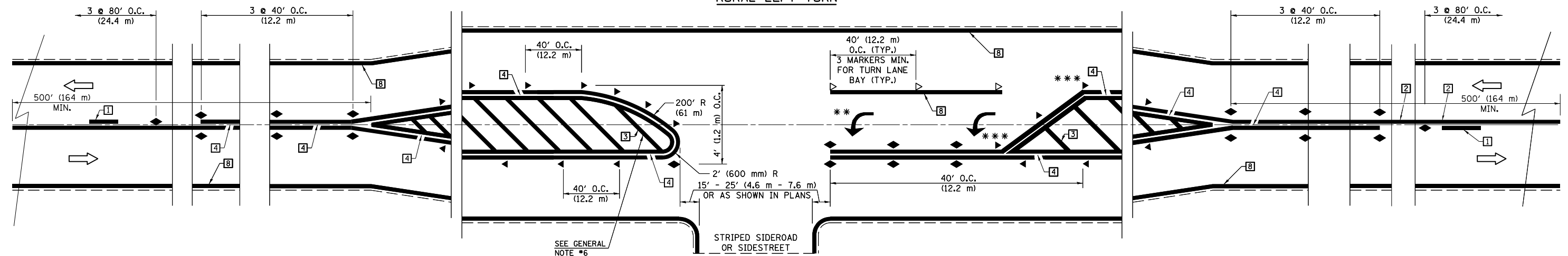
**TYPICAL PAVEMENT MARKING LEGEND**

- 1 4" (100) SKIP-DASH (YELLOW)
- 2 4" (100) SOLID (YELLOW)
- 3 12" (300) DIAGONAL (YELLOW)
- 4 4" (100) DOUBLE YELLOW (NARROW)
- 5 RESERVED
- 6 RESERVED
- 7 4" (100) SKIP-DASH (WHITE)
- 8 4" (100) SOLID (WHITE)
- 9 12" (300) DIAGONAL (WHITE)
- 10 6" (150) SOLID (WHITE)
- 11 24" (600) STOP BAR (WHITE)
- 12 8" (200) SOLID (WHITE)
- 13 4" (100) LANE LINE EXTENSIONS (WHITE)
- 14 4" (100) PARKING WHITE

**TYPICAL PAVEMENT MARKERS LEGEND**

- ◆ TWO-WAY AMBER MARKER
- ▶ ONE-WAY AMBER MARKER
- ▷ ONE-WAY CRYSTAL MARKER

**RURAL LEFT TURN**



\*\*\* REDUCE SPACING IF NECESSARY TO ASSURE MARKERS AT CORNER POINTS.  
 \*\* TURN ARROWS SHALL BE PLACED AS SHOWN ON SHEET #2.

Note: All dimensions are in INCHES (millimeters) unless otherwise shown.

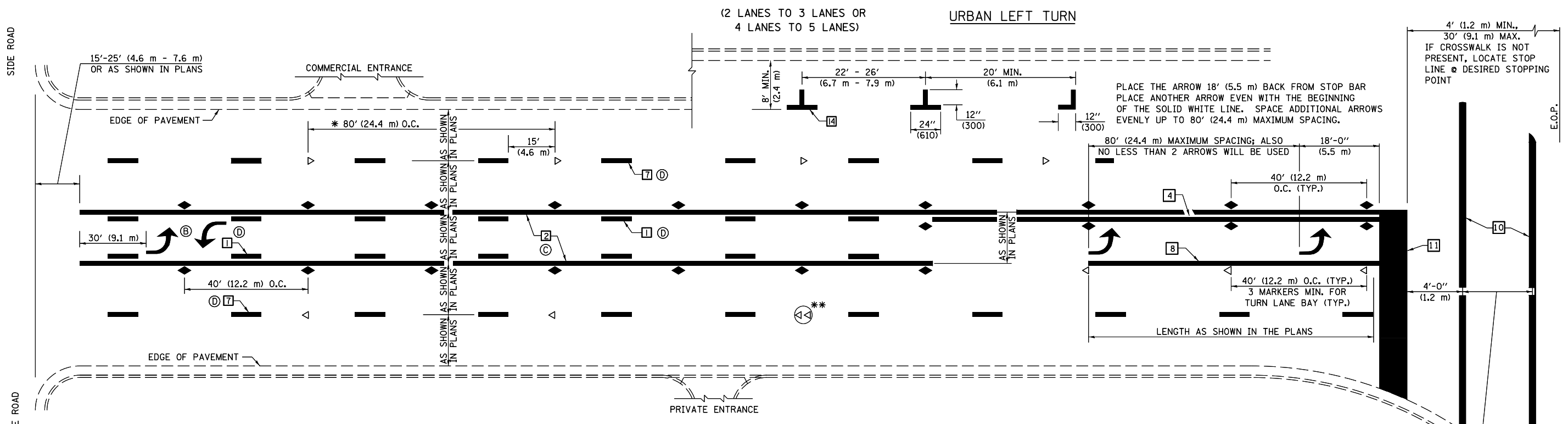
FILE NAME =	USER NAME = hoganbj	DESIGNED -	REVISED - 11/06
p:\work\084EBIDINTEG\illinois.gov\PIDOT\Documents\DOT Offices\District 5\Projects\0570\CDRAWING\Design\0570C66-05-detail.dgn		DRAWN -	REVISED - 09/2009 - KJT
	PLOT SCALE = 40.0000' / in.	CHECKED -	REVISED - 04/14 - JLA
*MODELNAME*	PLOT DATE = 1/26/2017	DATE -	REVISED -

**STATE OF ILLINOIS  
DEPARTMENT OF TRANSPORTATION**

**PAVEMENT MARKING AND MARKERS  
(RURAL & URBAN APPLICATIONS)**

SCALE: SHEET 1 OF 4 SHEETS STA. TO STA.

<b>DISTRICT 5 DETAIL NO. 7800AAA</b>				
F.A.P. RTE.	SECTION	COUNTY	TOTAL SHEETS	SHEET NO.
709	(113)CLV	CHAMPAIGN	18	15
CONTRACT NO. 70C66				
ILLINOIS FED. AID PROJECT				

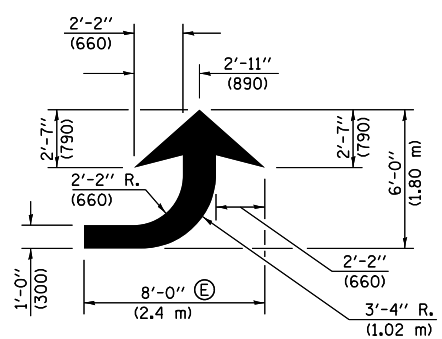


\* REDUCE TO 40 FEET (12.2 METERS) ON CENTER ON CURVES WHERE ADVISORY SPEEDS ARE 10 MPH (15 km/h) LOWER THAN POSTED SPEEDS.

\*\* DOUBLE LANE LINE MARKERS SHALL BE SPECIFIED AND SPACED AS SHOWN IN HIGHWAY STANDARD 781001 FOR MULTI-LANE DIVIDED AND UNDIVIDED HIGHWAYS.

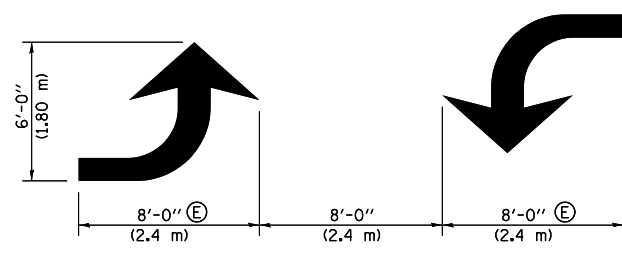
**GENERAL NOTES:**

- ⓑ TURN ARROW PAIRS SHALL BE PLACED AT 250' (75 m) INTERVALS AND SHALL BE EVENLY SPACED BETWEEN BOTH ENDS OF THE BIDIRECTIONAL LEFT TURN LANE.
- ⓒ THE SOLID YELLOW PAVEMENT MARKINGS [2] SHOULD GENERALLY START OR END NEAR THE RADIUS POINT OF EACH STREET RETURN EXCEPT WHERE ONE OR BOTH ENDS WOULD INCLUDE STOP BARS.
- ⓓ THE SKIP-DASH PAVEMENT MARKINGS [1] OR [7] SHOULD BE CENTERED BETWEEN BOTH ENDS OF EACH CITY BLOCK AND SHALL BE PLACED SO THEY LINE UP ACROSS FROM EACH OTHER. SEE EXAMPLE ON SHEET 2 OF 3.
- ⓔ USE LARGE ARROW SIZE FOR BOTH RURAL AND URBAN LOCATIONS. (SEE LAST PAGE OF SECTION 780x FOR SYMBOLS TABLE)



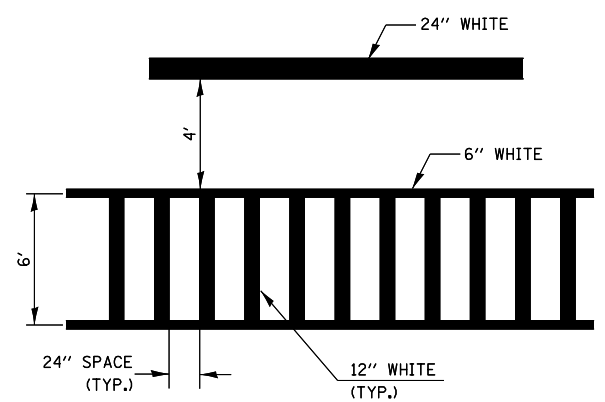
**LEFT ARROW**

REVERSE FOR RIGHT ARROW  
AREA = 15.6 SQ. FT. (1.47 m<sup>2</sup>)  
(WHITE)

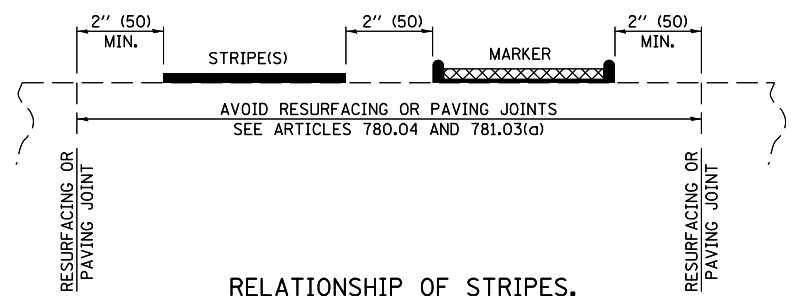


**TYPICAL DOUBLE TURN ARROWS (WHITE)**

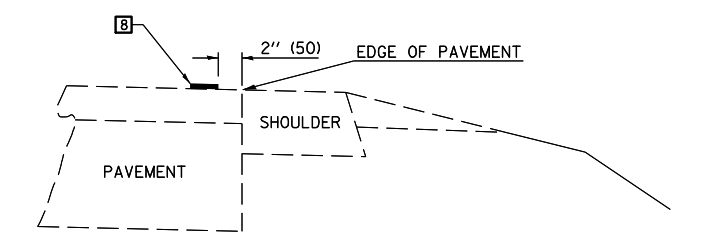
**BLOOMINGTON-NORMAL CITY LIMITS ONLY**



**TYPICAL SPACING FOR CROSSWALKS & STOP BARS**



**RELATIONSHIP OF STRIPES, MARKERS AND JOINTS**



**RELATIONSHIP OF EDGE LINE TO EDGE OF PAVEMENT (SAFETY SHOULDER OR PAVED SURFACE) SEE ARTICLE 780.04**

Note: All dimensions are in INCHES (millimeters) unless otherwise shown.

**DISTRICT 5 DETAIL NO. 7800AAA**

FILE NAME =	USER NAME = hoganbj	DESIGNED -	REVISED - 11/06	<b>STATE OF ILLINOIS DEPARTMENT OF TRANSPORTATION</b>	<b>PAVEMENT MARKING AND MARKERS (RURAL &amp; URBAN APPLICATIONS)</b>	F.A.P. RTE.	SECTION	COUNTY	TOTAL SHEETS	SHEET NO.	
pw:\11\084EBIDINTEG.illinois.gov\PIWIDOT\Documents\DOT Offices\District 5\Projects\0570\Drawings\Design\0570C66-05-detail.dgn		CHECKED -	REVISED - 09/2009 - KJT			709	(113)CLV	CHAMPAIGN	18	16	
*MODELNAME*		DATE -	REVISED - 04/14 - JLA			SCALE: SHEET 2 OF 4 SHEETS STA. TO STA.		CONTRACT NO. 70C66		ILLINOIS FED. AID PROJECT	
			REVISED -								





