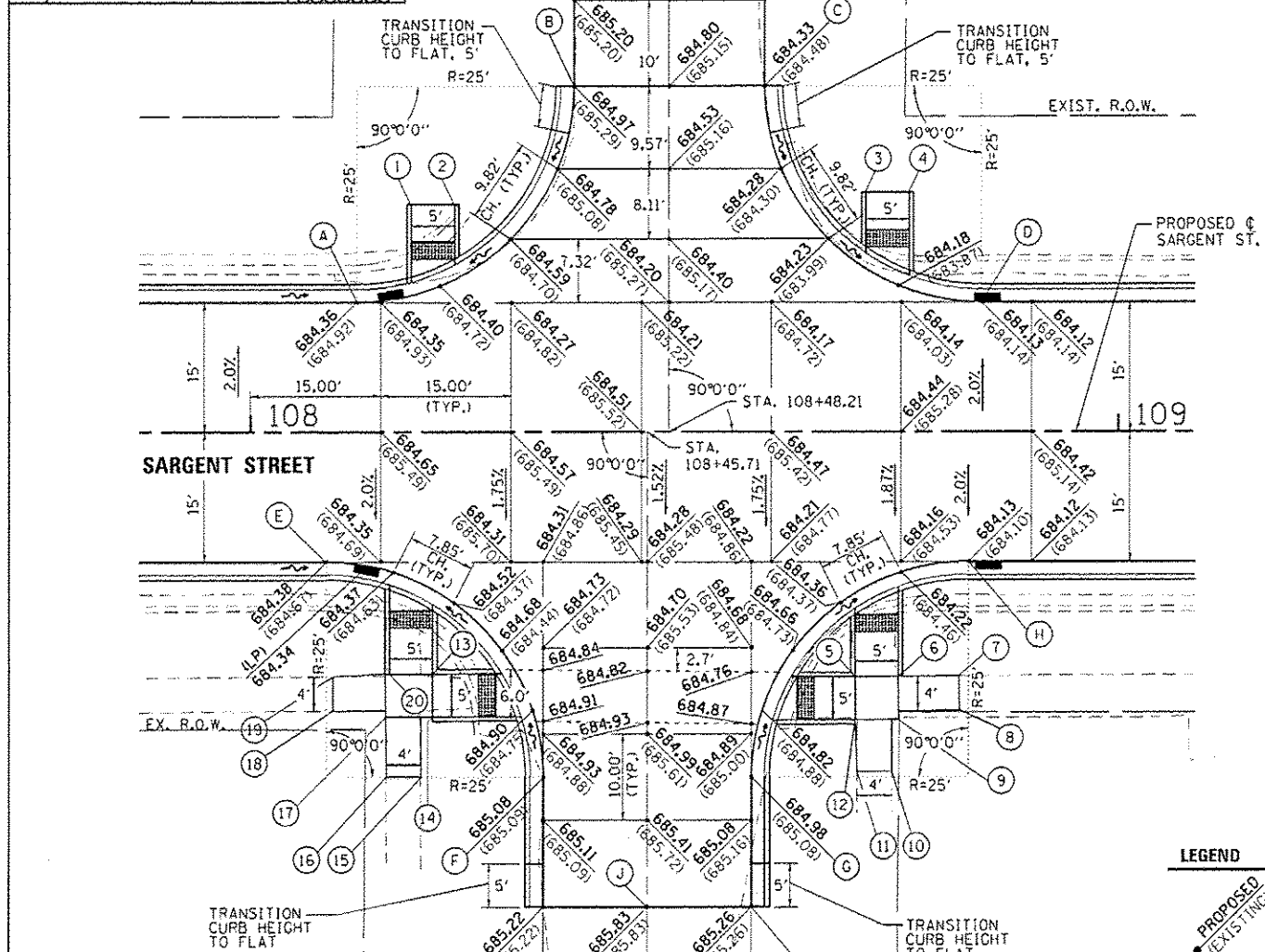


SIDEWALK LAYOUT POINTS			
PT.	STATION	OFFSET	ELEVATION
1	STA. 108+18.46	26.32' LT.	684.90 (EX.)
2	STA. 108+23.46	26.32' LT.	684.89
3	STA. 108+70.87	27.74' LT.	684.56 (EX.)
4	STA. 108+76.37	27.74' LT.	684.65
5	STA. 108+69.67	28.40' RT.	684.85
6	STA. 108+74.67	28.37' RT.	684.91
7	STA. 108+81.67	28.78' RT.	685.42 (EX.)
8	STA. 108+81.68	32.26' RT.	685.46 (EX.)
9	STA. 108+74.68	33.39' RT.	685.01
10	STA. 108+73.88	39.39' RT.	685.46 (EX.)
11	STA. 108+69.88	39.40' RT.	685.43 (EX.)
12	STA. 108+69.68	33.40' RT.	684.95

PROPOSED LAYOUT POINTS			
L	STA. 108+37.21, 50.00' LT.		
M	STA. 108+48.21, 50.00' LT.		
N	STA. 108+59.21, 50.00' LT.		

PROPOSED RADIUS POINTS R=25.0'			
A	STA. 108+12.21, 15.00' LT.		
B	STA. 108+37.21, 40.00' LT.		
C	STA. 108+59.21, 40.00' LT.		
D	STA. 108+84.21, 15.00' LT.		



SIDEWALK LAYOUT POINTS			
PT.	STATION	OFFSET	ELEVATION
13	STA. 108+20.96	28.01' RT.	685.00
14	STA. 108+20.97	33.51' RT.	685.10
15	STA. 108+19.60	40.01' RT.	685.67 (EX.)
16	STA. 108+15.60	40.02' RT.	685.74 (EX.)
17	STA. 108+15.58	33.02' RT.	685.17
18	STA. 108+09.46	32.33' RT.	685.64 (EX.)
19	STA. 108+09.46	28.33' RT.	685.57 (EX.)
20	STA. 108+15.96	28.01' RT.	685.07

PROPOSED LAYOUT POINTS			
I	STA. 108+33.71, 55.00' RT.		
J	STA. 108+45.71, 55.00' RT.		
K	STA. 108+57.71, 55.00' RT.		

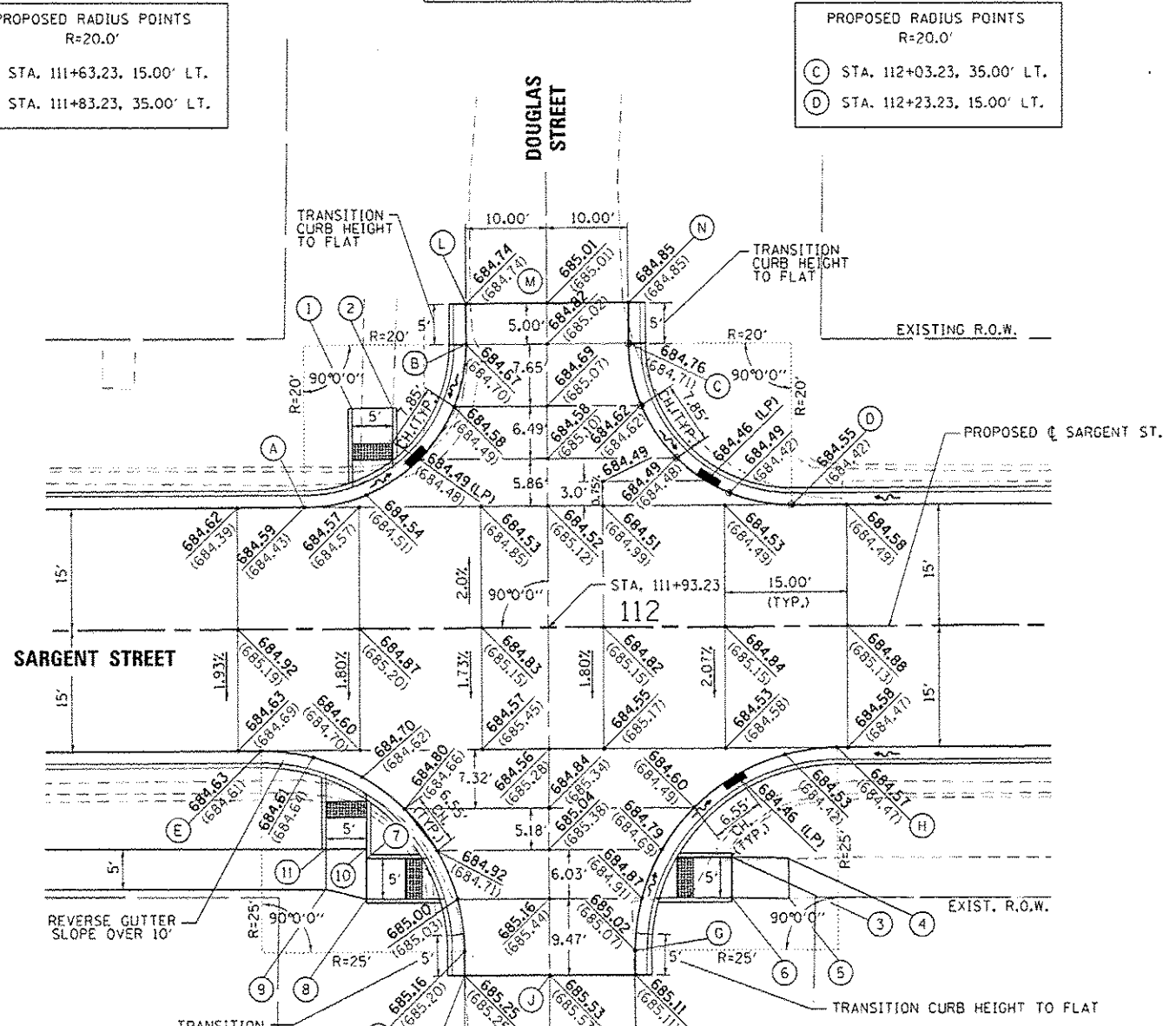
PROPOSED RADIUS POINTS R=25.0'			
E	STA. 108+08.71, 15.00' RT.		
F	STA. 108+33.71, 40.00' RT.		
G	STA. 108+57.71, 40.00' RT.		
H	STA. 108+82.71, 15.00' RT.		

LEGEND

PROPOSED RADIUS POINTS R=20.0'	
A	STA. 111+63.23, 15.00' LT.
B	STA. 111+83.23, 35.00' LT.

PROPOSED LAYOUT POINTS			
L	STA. 111+82.23, 40.00' LT.		
M	STA. 111+93.23, 40.00' LT.		
N	STA. 112+02.73, 40.00' LT.		

PROPOSED RADIUS POINTS R=20.0'			
C	STA. 112+03.23, 35.00' LT.		
D	STA. 112+23.23, 15.00' LT.		



PROPOSED RADIUS POINTS R=25.0'			
E	STA. 111+57.81, 15.00' RT.		
F	STA. 111+82.73, 40.00' RT.		
G	STA. 112+03.73, 40.00' RT.		
H	STA. 112+28.65, 15.00' RT.		

PROPOSED LAYOUT POINTS			
I	STA. 111+82.73, 43.00' RT.		
J	STA. 111+93.23, 43.00' RT.		
K	STA. 112+02.73, 43.00' RT.		

SIDEWALK LAYOUT POINTS			
PT.	STATION	OFFSET	ELEVATION
1	STA. 111+69.17	27.21' LT.	684.65 (EX.)
2	STA. 111+74.17	27.21' LT.	684.75
3	STA. 112+15.69	28.53' RT.	684.95
4	STA. 112+22.69	28.62' RT.	685.09 (EX.)
5	STA. 112+22.69	33.62' RT.	685.19
6	STA. 112+15.69	33.53' RT.	685.04
7	STA. 111+70.73	28.43' RT.	685.13
8	STA. 111+70.71	33.46' RT.	685.23
9	STA. 111+65.73	32.23' RT.	685.12
10	STA. 111+70.73	27.25' RT.	685.11
11	STA. 111+65.73	27.23' RT.	685.02

FILE NAME =	USER NAME = Kristin Timmons	DESIGNED - BB	REVISED - 4/19/17
L:\Litchfield\1582885\Draw\CADD\Sheets\2-0693683-INT-INT DET 2.dgn		DRAWN - RAH	REVISED -
PLOT SCALE = 20.0000' / 1" =		CHECKED - KLT	REVISED -
PLOT DATE = 4/18/2017		DATE - 1/12/17	REVISED -

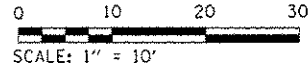
**CITY OF LITCHFIELD
LITCHFIELD, ILLINOIS**

**INTERSECTION DETAILS
LINCOLN STREET / SARGENT STREET
DOUGLAS STREET / SARGENT STREET**

SCALE: 1"=10' SHEET OF SHEETS STA. TO STA.

F.A. RTE.	SECTION	COUNTY	TOTAL SHEETS	SHEET NO.
	15-00036-00-PV	MONTGOMERY	23	12
ILLINOIS FED. AID PROJECT			CONTRACT NO. 93683	

LEGEND



PROPOSED RADIUS POINTS
R=25.0'

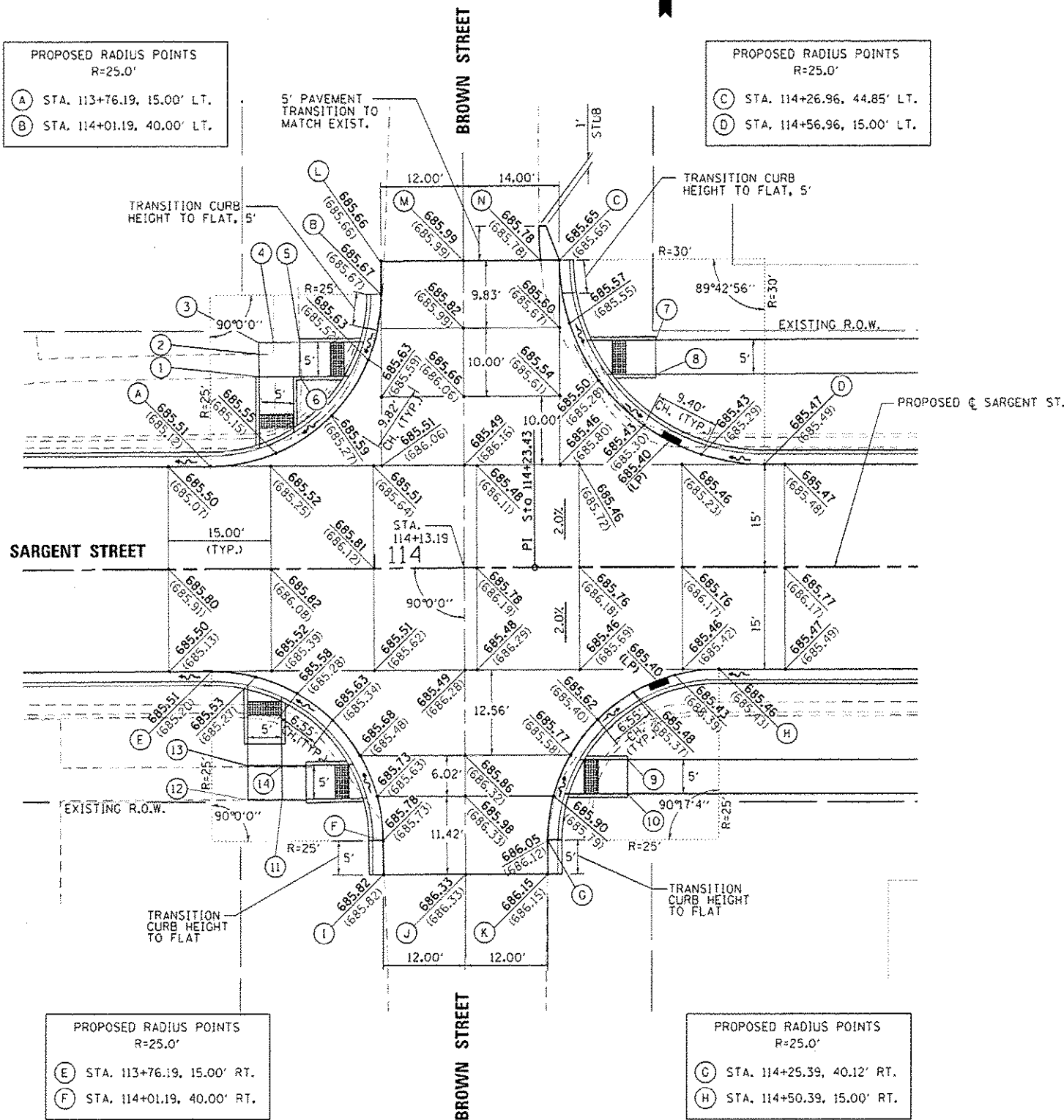
(A) STA. 113+76.19, 15.00' LT.
(B) STA. 114+01.19, 40.00' LT.

PROPOSED RADIUS POINTS
R=25.0'

(C) STA. 114+26.96, 44.85' LT.
(D) STA. 114+56.96, 15.00' LT.

PROPOSED LAYOUT POINTS

(L) STA. 114+01.19, 44.83' LT.
(M) STA. 114+13.19, 44.83' LT.
(N) STA. 114+24.24, 44.84' LT.



PROPOSED RADIUS POINTS
R=25.0'

(E) STA. 113+76.19, 15.00' RT.
(F) STA. 114+01.19, 40.00' RT.

PROPOSED RADIUS POINTS
R=25.0'

(G) STA. 114+25.39, 40.12' RT.
(H) STA. 114+50.39, 15.00' RT.

PROPOSED LAYOUT POINTS

(I) STA. 114+01.19, 45.00' RT.
(J) STA. 114+13.19, 45.00' RT.
(K) STA. 114+25.41, 45.00' RT.

SIDEWALK LAYOUT POINTS			
PT.	STATION	OFFSET	ELEVATION
1	STA. 113+83.33	28.07' LT.	685.95 (EX.)
2	STA. 113+83.33	31.34' LT.	686.01 (EX.)
3	STA. 113+83.33	33.07' LT.	686.02
4	STA. 113+85.47	33.07' LT.	685.98 (EX.)
5	STA. 113+89.27	33.07' LT.	685.99 (EX.)
6	STA. 113+89.27	28.07' LT.	685.91
7	STA. 114+41.08	33.16' LT.	685.89
8	STA. 114+41.09	28.16' LT.	685.80
9	STA. 114+36.99	28.28' RT.	685.89
10	STA. 114+37.00	33.28' RT.	685.98
11	STA. 113+86.43	33.94' RT.	686.29
12	STA. 113+81.43	33.94' RT.	686.19
13	STA. 113+81.43	28.94' RT.	686.09
14	STA. 113+86.43	28.95' RT.	686.19

FILE NAME =	USER NAME = Kristin Timmons	DESIGNED - BB	REVISED - 4/19/17
L:\Litchfield\15020025\Draw\CADD_Sheets\3_0693683-shc-INT_DET_3.dgn		DRAWN - RAH	REVISED -
PLT SCALE = 28.0000' / in.		CHECKED - KLT	REVISED -
PLT DATE = 4/18/2017		DATE - 1/12/17	REVISED -

**CITY OF LITCHFIELD
LITCHFIELD, ILLINOIS**

**INTERSECTION DETAILS
BROWN STREET / SARGENT STREET**

SCALE: 1"=10' SHEET OF SHEETS STA. TO STA.

F.A. RTE.	SECTION	COUNTY	TOTAL SHEETS	SHEET NO.
	15-00036-00-PV	MONTGOMERY	23	13
CONTRACT NO. 93683				
ILLINOIS FED. AID PROJECT				