

SEE SHEET 2 FOR INDEX OF SHEETS

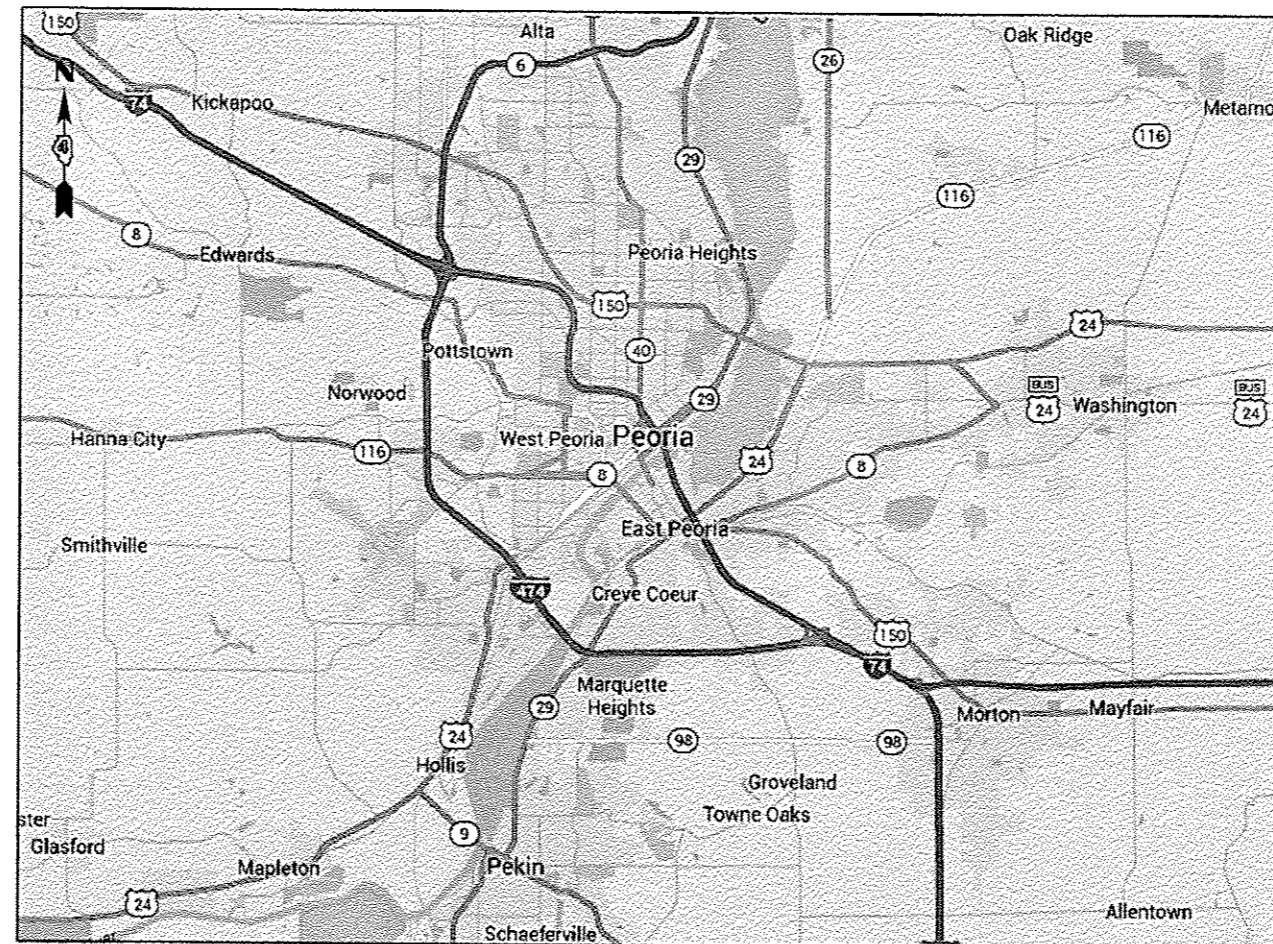
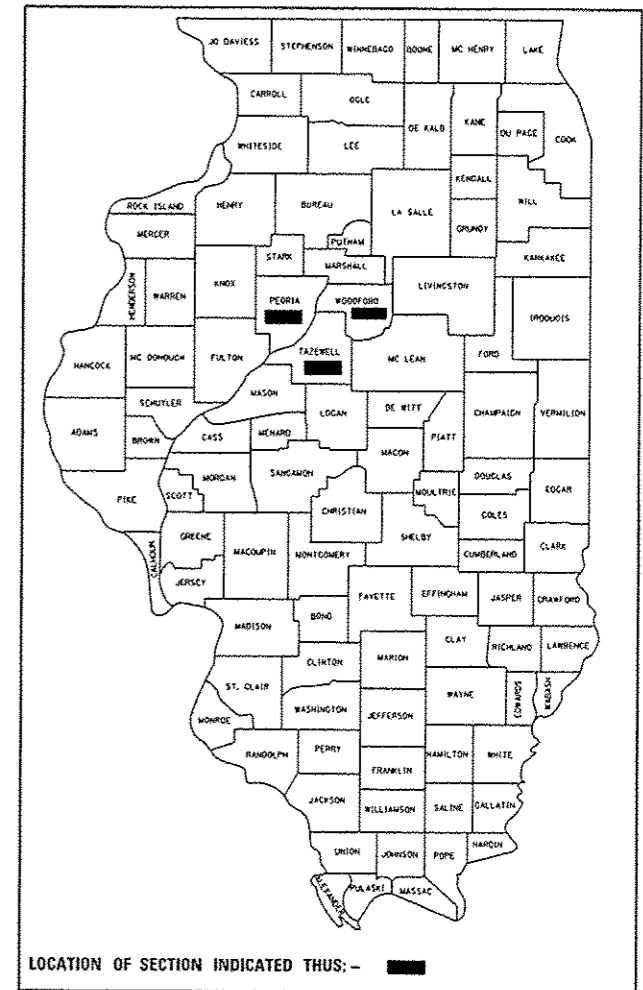
STATE OF ILLINOIS
 DEPARTMENT OF TRANSPORTATION
 DIVISION OF HIGHWAYS
**PROPOSED
 HIGHWAY PLANS**

VARIOUS ROUTES
 SECTION D4 TRAFFIC SIGNALS 2017
 VARIOUS COUNTIES

C-94-050-17

RTE.	SECTION	COUNTY	TOTAL SHEETS	SHEET NO.
VAR.	D4 TRAFFIC SIGNALS 2017	VARIOUS	23	1
		ILLINOIS	CONTRACT NO. 68D56	

D-94-023-17



HIGHWAY STANDARDS

SEE SHEET 2 FOR A LIST OF APPLICABLE HIGHWAY STANDARDS

PROJECT DESCRIPTION

REPAIR OF EXISTING LIGHTING SYSTEMS,
 INSTALLATION OF LED LUMINAIRES,
 INSTALLATION OF CCTV CAMERAS AT
 VARIOUS LOCATIONS WITHIN DISTRICT 4

J.U.L.I.E.
 JOINT UTILITY LOCATION INFORMATION FOR EXCAVATION
 1-800-892-0123
 OR 811

PROJECT ENGINEER: ERIC HOWALD (309) 671-4481
 PROJECT MANAGER: RANDY LANINGA (309) 671-4477
 CATALOG NO. 35465-00D
 CONTRACT NO. 68D56

STATE OF ILLINOIS
 DEPARTMENT OF TRANSPORTATION
 DIVISION OF HIGHWAYS

SUBMITTED February 17, 20 17
Kenneth A. Garnett
 REGION THREE ENGINEER

Mar 24, 20 17
Margaret M. Adams, P.E.
 ENGINEER OF DESIGN AND ENVIRONMENT

Mar 24, 20 17
[Signature]
 DIRECTOR OF PROGRAM DEVELOPMENT

PRINTED BY THE AUTHORITY
 OF THE STATE OF ILLINOIS

COMMITMENTS

THERE ARE NO COMMITMENTS MADE IN CONJUNCTION WITH THIS PROJECT.

HIGHWAY STANDARDS	
STANDARD	APPLICATION
000001-06	STANDARD SYMBOLS, ABBREVIATIONS, AND PATTERNS
001006	DECIMAL OF AN INCH AND OF A FOOT
701001-02	OFF-ROAD OPERATIONS, 2L, 2W, MORE THAN 4.5 M (15') AWAY
701006-05	OFF-ROAD OPERATIONS, 2L, 2W, 4.5 M (15') TO 600 MM (24") FROM PAVEMENT EDGE
701101-05	OFF-ROAD OPERATIONS, MULTILANE, 4.5 M (15') TO 600 MM (24") FROM PAVEMENT EDGE
701106-02	OFF-ROAD OPERATIONS, MULTILANE, MORE THAN 4.5 (15') AWAY
701201-04	LANE CLOSURE, 2L, 2W, DAY ONLY, FOR SPEEDS ≥ 45 MPH
701400-09	APPROACH TO LANE CLOSURE, FREEWAY/EXPRESSWAY
701406-11	LANE CLOSURE, FREEWAY/EXPRESSWAY, DAY OPERATIONS ONLY
701411-09	LANE CLOSURE, MULTILANE AT ENTRANCE OR EXIT RAMP FOR SPEEDS ≥ 45 MPH
701421-08	LANE CLOSURE, MULTILANE, DAY OPERATIONS ONLY, FOR SPEEDS ≥ 45 MPH TO 55 MPH
701428-01	TRAFFIC CONTROL SETUP AND REMOVAL FREEWAY/EXPRESSWAY
701456-04	PARTIAL EXIT RAMP CLOSURE FREEWAY/EXPRESSWAY
701601-09	URBAN LANE CLOSURE, MULTILANE, 1W OR 2W WITH NONTRAVERSABLE MEDIAN
701701-10	URBAN LANE CLOSURE, MULTILANE INTERSECTION
701801-06	SIDEWALK, CORNER OR CROSSWALK CLOSURE
701901-06	TRAFFIC CONTROL DEVICES
821101-02	LUMINAIRE WIRING DIAGRAM

INDEX OF SHEETS	
PAGE	DESCRIPTION
1	COVER SHEET
2	COMMITMENTS, CONSTRUCTION NOTES, INDEX OF SHEETS, AND HIGHWAY STANDARDS
3	SUMMARY OF QUANTITIES
4	SCHEDULE OF QUANTITIES
5	PROPOSED LED LUMINAIRE INSTALLATION DETAILS
6 - 7	PROPOSED LUMINAIRE AND CONDUIT REPAIR - I-474 @ US 24 (PEORIA COUNTY)
8 - 9	PROPOSED LUMINAIRE REPAIR - I-474 @ IL 29 (TAZEWEILL COUNTY)
10	EXISTING LIGHTING CIRCUIT DIAGRAMS - I-474 @ US 24 (PEORIA COUNTY) & I-474 @ IL 29 (TAZEWEILL COUNTY)
11	PROPOSED CCTV CAMERA INSTALLATION - I-74 @ NEBRASKA (PEORIA)
12	EXISTING LIGHT PLAN SHEETS - IL 9 MCNAUGHTON BRIDGE (PEKIN)
13	EXISTING LIGHTING PLAN SHEETS - IL 40 BOB MICHEL BRIDGE (PEORIA/EAST PEORIA)
14	EXISTING LIGHTING PLAN SHEETS - US 136 RIVER BRIDGE (HAVANA)
15	EXISTING LIGHTING PLAN SHEETS - US 24 & IL 116 INTERCHANGE (EAST PEORIA)
16 - 17	EXISTING LIGHTING PLAN SHEETS - IL 29 & IL 98 (NORTH PEKIN)
18	EXISTING LIGHTING PLAN SHEETS - IL 116 & IL 117/CH 1 (ROANOKE)
19 - 23	EXISTING LIGHTING PLAN SHEETS - US 24/US 150 MCCLUGGAGE BRIDGE (PEORIA/ EAST PEORIA)

CONSTRUCTION NOTES	
1.	EXISTING UTILITY LOCATION INFORMATION IS NOT SHOWN ON THE PLAN SHEETS. THE CONTRACTOR SHALL FIELD VERIFY THE LOCATION OF ALL UTILITIES AND PRIVATELY OWNED FACILITIES PRIOR TO THE INSTALLATION OF ANY COMPONENTS. THE CONTRACTOR SHALL VERIFY EXISTING FIELD CONDITIONS AND TERRAIN PRIOR TO COMMENCING WORK ON THE PROJECT.
2.	THE LOCATION OF ALL UTILITIES AND PRIVATELY OWNED FACILITIES SHALL BE FIELD VERIFIED BY THE CONTRACTOR PRIOR TO THE INSTALLATION OF ANY COMPONENTS.
3.	THE CONTRACTOR SHALL BE RESPONSIBLE FOR LOCATING EXISTING IDOT ELECTRICAL FACILITIES AT HIS/HER OWN EXPENSE IF REQUIRED. THE CONTRACTOR SHALL ALSO BE LIABLE FOR ANY DAMAGE TO IDOT FACILITIES RESULTING FROM INACCURATE LOCATING.
4.	ELECTRICAL WORK SHALL CONFORM WITH NATIONAL, STATE, AND LOCAL CODES.
5.	THE CONTRACTOR SHALL PROVIDE ELECTRICAL CABLE SLACK IN ACCORDANCE WITH ARTICLE 873.03 UNLESS SPECIFIED OTHERWISE.
6.	ELECTRICAL CABLE WILL BE MEASURED FOR PAYMENT IN ACCORDANCE WITH ARTICLE 873.04.
7.	ALL SURPLUS MATERIALS SHALL BE DISPOSED OF IN ACCORDANCE WITH ARTICLE 202.03 OF THE STANDARD SPECIFICATION.
8.	ANY MAINTENANCE OF EXISTING ELECTRICAL FACILITIES WILL BE CONSIDERED EXTRA WORK IN ACCORDANCE WITH ARTICLE 109.04 OF THE STANDARD SPECIFICATIONS.
9.	THE EXISTING LIGHTING SHALL REMAIN IN OPERATION DURING THE INSTALLATION OF THE PROPOSED LUMINAIRES.
10.	THE JUNCTION BOX SHALL BE CONSTRUCTED SO THAT THE TOP OF THE FRAME WILL BE FLUSH WITH THE SURFACE OF THE MEDIAN, SIDEWALK, OR GROUND LINE.
11.	COILABLE POLYETHYLENE DUCT MAY BE SUBSTITUTED FOR UNDERGROUND PVC CONDUIT.
12.	POTHOLING TO LOCATE EXISTING UNDERGROUND UTILITIES SHALL BE INCLUDED IN THE CONTRACT BID PRICE FOR THE CONDUIT PAY ITEM.
13.	NO ADDITIONAL COMPENSATION SHALL BE ALLOWED FOR PLACING CONDUIT AT GREATER THAN THE REQUIRED MINIMUM DEPTH TO AVOID OBSTACLES SUCH AS UNDERGROUND UTILITIES.
14.	THE CONTRACTOR IS RESPONSIBLE FOR THE COST OF UNCOVERING OR HAND DIGGING AROUND UTILITIES AS NECESSARY. THIS COST OF THIS WORK SHALL BE INCLUDED IN THE UNIT PRICES FOR THE CONDUITS.
15.	REMOVAL OF EXISTING ITEMS (LUMINAIRES, WIRING, ETC.) WILL NOT BE PAID FOR SEPARATELY, BUT SHALL BE INCLUDED IN THE UNIT BID PRICES FOR THE PROPOSED ITEMS.
16.	THE EXISTING FUSHOLDERS, FUSES, SURGE ARRESTORS, AND POLE WIRING MAY BE REUSED PROVIDED THAT THEY ARE OPERATIONAL AND UNDAMAGED. THE CONTRACTOR SHALL FURNISH AND INSTALL NEW COMPONENTS IN THE EVENT THAT THESE ITEMS ARE DAMAGED OR NON-FUNCTIONAL. THE COST OF THIS WORK SHALL BE INCLUDED IN THE PAY ITEM FOR THE PROPOSED LUMINAIRES.
17.	THE CONTRACTOR SHALL FURNISH AND INSTALL ALL ITEMS REQUIRED TO ATTACH THE CONDUITS AND JUNCTION BOXES TO THE STRUCTURE, INCLUDING, BUT NOT LIMITED TO UNI-STRUT, BRACKETS, SEAL-TITE, LBS, FITTINGS, HARDWARE, AND OTHER MISCELLANEOUS ITEMS. THESE ITEMS WILL NOT BE PAID FOR SEPARATELY, BUT SHALL BE INCLUDED IN THE BID PRICE FOR THE CONDUIT ATTACHED TO STRUCTURE PAY ITEM.
18.	CONDUIT ATTACHMENT BRACKETS SHALL BE INSTALLED AT 8 FT. SPACINGS (MAXIMUM) ON STRUCTURES.
19.	THE CONTRACTOR SHALL GROUND ALL EXPOSED STEEL CONDUITS IN ACCORDANCE WITH NEC REQUIREMENTS. THE CONTRACTOR SHALL MAINTAIN THE CONTINUITY OF THE GROUND SYSTEM WHEN USING NON-METALLIC SEAL-TITE CONDUIT BY INSTALLING A #6 GROUNDING CONDUCTOR INSIDE THE SEAL-TITE AND BONDING THIS WIRE TO THE GALVANIZED STEEL CONDUITS AT EACH END. THE COST OF THIS WORK SHALL BE INCLUDED IN THE UNIT BID PRICE FOR THE GALVANIZED STEEL CONDUIT PAY ITEMS.
20.	ALL CONDUIT ATTACHMENT BRACKETS SHALL BE FULLY GALVANIZED AND ALL HARDWARE SHALL BE EITHER GALVANIZED OR STAINLESS STEEL.
21.	THE CONTRACTOR SHALL INSTALL THREAD LOCKER ON ALL ATTACHED CONDUIT THREADED CONNECTIONS TO PREVENT LOOSENING THROUGH VIBRATION.

FILE NAME : #FILE#	USER NAME : #USER#	DESIGNED - _____	REVISED - _____	STATE OF ILLINOIS DEPARTMENT OF TRANSPORTATION	CONSTRUCTION NOTES AND PROJECT COMMITMENTS	F.A.P. RTE.	SECTION	COUNTY	TOTAL SHEETS	SHEET NO.
	PLOT SCALE : #SCALE#	DRAWN - _____	REVISED - _____			VAR.	04 TRAFFIC SIGNALS 2017	VARIOUS	23	2
	PLOT DATE : #DATE#	CHECKED - _____	REVISED - _____			CONTRACT NO. 68D56				
		DATE - _____	REVISED - _____	SCALE: _____ TO STA. _____		ILLINOIS FED. AID PROJECT				

REV

SUMMARY OF QUANTITIES

VARIOUS COUNTIES

CONST. TYPE
CODE 0021
VARIOUS ROUTES
(100% STATE)
URBAN

CODE	ITEM DESCRIPTION	UNIT	TOTAL QTY.	
67100100	MOBILIZATION	LSUM	1.0	1.0
81028340	UNDERGROUND CONDUIT, PVC, 1 1/2" DIA.	FOOT	150.0	150.0
81300948	<i>JUNCTION BOX, STAINLESS STEEL, ATTACHED TO STRUCTURE, 24"X24"X10"</i>	<i>EACH</i>	<i>2.0</i>	<i>2.0</i>
81702120	ELECTRIC CABLE IN CONDUIT, 600V (XLP-TYPE USE) 1/C NO. 8	FOOT	3375.0	3375.0
87900200	DRILL EXISTING HANDHOLE	EACH	1.0	1.0
X0323923	SUPPORT EQUIPMENT AND MAINTENANCE	LSUM	1.0	1.0
X0325924	CLEAN, RELAMP AND MAINTENANCE OF EXISTING LUMINAIRE	EACH	12.0	12.0
X0326812	CAT 5 ETHERNET CABLE	FOOT	248.0	248.0
X0326946	CLOSED CIRCUIT TELEVISION CAMERA INSTALLATION	EACH	1.0	1.0
X1400095	LUMINAIRE, LED, HORIZONTAL MOUNT, HIGH WATTAGE	EACH	54.0	54.0
X1400113	LUMINAIRE, LED, HORIZONTAL MOUNT, MEDIUM WATTAGE	EACH	97.0	97.0
X7010216	TRAFFIC CONTROL AND PROTECTION, (SPECIAL)	LSUM	1.0	1.0
X8110452	CONDUIT ATTACHED TO STRUCTURE, 1/2" DIA. STAINLESS STEEL	EACH	30.0	30.0
X8110458	CONDUIT ATTACHED TO STRUCTURE, 2" DIA., STAINLESS STEEL	FOOT	1125.0	1125.0
X8130110	JUNCTION BOX (SPECIAL)	EACH	1.0	1.0
Z0033022	CLEAN AND RELAMP EXISTING LUMINAIRE	EACH	18.0	18.0
Z0048665	<i>RAILROAD PROTECTIVE LIABILITY INSURANCE</i>	<i>L SUM</i>	<i>1.0</i>	<i>1.0</i>

FILE NAME :
68056 - Final Plans.dgn

USER NAME : kashob	DESIGNED -	REVISED -
PLOT SCALE : 38.8588' / in.	DRAWN -	REVISED -
PLOT DATE : 2/17/2017	CHECKED -	REVISED -
	DATE -	REVISED -

**STATE OF ILLINOIS
DEPARTMENT OF TRANSPORTATION**

SUMMARY OF QUANTITIES

SCALE: _____ TO STA. _____ TO STA. _____

F.A.P. RTE.	SECTION	COUNTY	TOTAL SHEETS	SHEET NO.
VAR.	D4 TRAFFIC SIGNALS 2017	VARIOUS	23	3
CONTRACT NO. 68056				
ILLINOIS FED. AID PROJECT				

SCHEDULE OF QUANTITIES

SCHEDULE OF QUANTITIES			FULTON COUNTY	PEORIA COUNTY				TAZEWELL COUNTY				WOODFORD COUNTY
			US 136 HAVANA BRIDGE LIGHTING	IL 40 BOB MICHEL BRIDGE LIGHTING	US 24/US 150 MCCLUGGAGE BRIDGE LIGHTING	I-474 BARTONVILLE LIGHTING	I-74 @ NEBRAKSA CCTV CAMERA	I-474 CREVE COEUR LIGHTING	US 24/IL 116 INTERCHANGE LIGHTING	IL 9 PEKIN BRIDGE LIGHTING	IL 29 & IL 98 NORTH PEKIN ROADWAY LIGHTING	IL 116 & IL 117/CH 1 LIGHTING
ITEM DESCRIPTION	UNIT	TOTAL QTY.										
UNDERGROUND CONDUIT, PVC, 1 1/2" DIA.	FOOT	150.0					150.0					
JUNCTION BOX, STAINLESS STEEL, ATTACHED TO STRUCTURE, 24" X 24" X 10"	EACH	2.0				2.0						
ELECTRIC CABLE IN CONDUIT, 600V (XLP-TYPE USE) 1/C NO. 8	FOOT	3375.0				3375.0						
DRILL EXISTING HANDHOLE	EACH	1.0					1.0					
CLEAN, RELAMP AND MAINTENANCE OF EXISTING LUMINAIRE	EACH	12.0				7.0		5.0				
CAT 5 ETHERNET CABLE	FOOT	248.0					248.0					
CLOSED CIRCUIT TELEVISION CAMERA INSTALLATION	EACH	1.0					1.0					
LUMINAIRE, LED, HORIZONTAL MOUNT, HIGH WATTAGE	EACH	54.0						38.0	16.0			
LUMINAIRE, LED, HORIZONTAL MOUNT, MEDIUM WATTAGE	EACH	97.0	18.0	22.0	43.0					6.0	8.0	
CONDUIT ATTACHED TO STRUCTURE, 1/2" DIA. STAINLESS STEEL	EACH	30.0					30.0					
CONDUIT ATTACHED TO STRUCTURE, 2" DIA., STAINLESS STEEL	FOOT	1125.0				1125.0						
JUNCTION BOX (SPECIAL)	EACH	1.0					1.0					
CLEAN AND RELAMP EXISTING LUMINAIRE	EACH	18.0				8.0		10.0				

ROUTE	LOCATION	EX. LUMINAIRE MOUNTING HEIGHT	LUMINAIRE ARM LENGTH	EX. LUMINAIRE TYPE AND WATTAGE	EX. LUMINAIRE VOLTAGE	PROP. LUMINAIRE TYPE	PROP. LUMINAIRE QTY.	NOTES	TRAFFIC CONTROL NOTES
IL 40	BOB MICHEL BRIDGE (PEORIA/EAST PEORIA)	45 FT. (POLES)		HPS, 250W	480V	LED, MEDIUM WATTAGE	22	TWO LIGHT POLES ON PEORIA APPROACH, TEN DOUBLE DAVIT ARM LIGHT POLES ON BRIDGE	HIGHWAY STANDARD 701601, LANE RESTRICTIONS FROM 8:30AM TO 3:30PM ONLY
IL 9	MCNAUGHTON BRIDGE (PEKIN)	50 FT. (POLES)		HPS, 400W	480V	LED, HIGH WATTAGE	16	TWELVE 6 FT. DAVIT ARM LIGHT POLES ON BRIDGE, ONE LIGHT POLE ON WB ENTRANCE, ONE LIGHT POLE ON EB EXIT, TWO LIGHT POLES ON IL 9 (SECOND ST.)	HIGHWAY STANDARD 701601 FOR WESTBOUND, HIGHWAY STANDARD 701421 FOR EASTBOUND
US 136	HAVANA BRIDGE	35 FT. (TRUSS)		HPS, 250W	240V	LED, MEDIUM WATTAGE	18	TWELVE 4 FT. DAVIT ARM LIGHT POLES ON BRIDGE, ONE LIGHT POLE ON WB APPROACH, FIVE LIGHT POLES ON EB APPROACH	HIGHWAY STANDARD 701201
US 24 US 150	WESTBOUND MCLUUGGAGE BRIDGE (PEORIA/EAST PEORIA)	45 FT. (POLES), 30 FT. (TRUSS)		HPS, 250W	480V	LED, MEDIUM WATTAGE	21	SEVEN LUMINAIRES ON 2 FT. DAVIT ARMS BRIDGE TRUSSES, SIX LIGHT POLES ON WB ENTRANCE, EIGHT LIGHT POLES ON WB EXIT	HIGHWAY STANDARDS 701411 AND 701601, LANE RESTRICTIONS FROM 8:30AM TO 3:30PM ONLY
US 24 US 150	EASTBOUND MCLUUGGAGE BRIDGE (PEORIA/EAST PEORIA)	45 FT. (POLES), 30 FT. (TRUSS)		HPS, 250W	480V	LED, MEDIUM WATTAGE	22	SEVEN LUMINAIRES ON 2 FT. DAVIT ARMS BRIDGE TRUSSES, SIX LIGHT POLES ON WB ENTRANCE, 3 LIGHT POLES ON WB ENTRANCE RAMP, SEVEN LIGHT POLES ON WB EXIT	HIGHWAY STANDARDS 701411 AND 701601, LANE RESTRICTIONS FROM 8:30AM TO 3:30PM ONLY
US 24 IL 116	US 24/IL 116 INTERCHANGE (TAZEWELL COUNTY)	45 FT. (POLES)		HPS, 400W	480V	LED, HIGH WATTAGE	38	UTILIZE EXISTING LUMINAIRE WIRING, ARRESTORS, AND FUSEHOLDERS, INSTALL NEW FUSES AND ARRESTORS AS NEEDED	HIGHWAY STANDARDS 701421 AND 701456, LANE RESTRICTIONS FROM 8:30AM TO 3:30PM ONLY
IL 116 IL 117	INTERSECTION OF IL 116 & IL 117/CR 1 NEAR ROANOKE	35 FT. (POLES)	8 FT.	HPS, 250W	240	LED, MEDIUM WATTAGE	8	UTILIZE EXISTING LUMINAIRE WIRING, ARRESTORS, AND FUSEHOLDERS, INSTALL NEW FUSES AND ARRESTORS AS NEEDED	HIGHWAY STANDARDS 701201 AND 701701
IL 29 IL 98	INTERSECTION OF IL 29 & IL 98 NEAR NORTH PEKIN	45 FT. (POLES)	8 FT.	HPS, 250W	240	LED, MEDIUM WATTAGE	8	UTILIZE EXISTING LUMINAIRE WIRING, ARRESTORS, AND FUSEHOLDERS, INSTALL NEW FUSES AND ARRESTORS AS NEEDED	HIGHWAY STANDARDS 701601 AND 701701

FILE NAME = 68D56 - Final Plans.dgn	USER NAME = keithbr	DESIGNED -	REVISED -	STATE OF ILLINOIS DEPARTMENT OF TRANSPORTATION	PROPOSED LED LUMINAIRE INSTALLATION DETAILS	F.A.P. RTE.	SECTION	COUNTY	TOTAL SHEETS	SHEET NO.	
		DRAWN -	REVISED -			VAR.	D4 TRAFFIC SIGNALS 2017	VARIOUS	23	5	
		CHECKED -	REVISED -			CONTRACT NO. 68D56					
		DATE -	REVISED -			SCALE:	STA.	TO STA.	ILLINOIS FED. AID PROJECT		

F.A.P. NO.	SECTION	COUNTY	TOTAL SHEETS	SHEET NO.
474	72 4L&90-SL	PEORIA	23	5
STA.		TO STA.		
FED. AID PROJ. NO.		FED. AID PROJECT		

LIGHT NO.	STATION	45 FT	55 F	400 W HPS	250 W HPS
2	358+38 FAI-474				
3	353+30 FAI-474				
4	3475 RAMP B				
5	3440 RAMP B				
6	3400 RAMP B				
7	3375 RAMP B				
8	3340 RAMP B				
9	3300 RAMP B				
10	3260 RAMP B				
11	3220 RAMP B				
12	3180 RAMP B				
13	3140 RAMP B				
14	3100 RAMP B				
15	3060 RAMP B				
16	3020 RAMP B				
17	2980 RAMP B				
18	2940 RAMP B				
19	2900 RAMP B				
20	2860 RAMP B				
21	2820 RAMP B				
22	2780 RAMP B				
23	2740 RAMP B				
24	2700 RAMP B				
25	2660 RAMP B				
26	2620 RAMP B				
27	2580 RAMP B				
28	2540 RAMP B				
29	2500 RAMP B				
30	2460 RAMP B				
31	2420 RAMP B				
32	2380 RAMP B				
33	2340 RAMP B				
34	2300 RAMP B				
35	2260 RAMP B				
36	2220 RAMP B				
37	2180 RAMP B				
38	2140 RAMP B				
39	2100 RAMP B				
40	2060 RAMP B				
41	2020 RAMP B				
42	1980 RAMP B				
43	1940 RAMP B				
44	1900 RAMP B				
45	1860 RAMP B				
46	1820 RAMP B				
47	1780 RAMP B				
48	1740 RAMP B				
49	1700 RAMP B				

THE CONTRACTOR SHALL FURNISH AND INSTALL 12" X 12" X 6" STAINLESS STEEL JUNCTION BOXES AT EACH LIGHT POLE, NON-METALLIC SEAL TITE AT EXPANSION JOINTS, AND ALL OTHER ITEMS REQUIRED TO RE-ESTABLISH THE LIGHTING CIRCUIT TO FEED THE NON-OPERATIONAL LIGHT POLES. THE COST OF THIS WORK SHALL BE INCLUDED IN THE PRICE FOR THE PROPOSED CONDUIT ATTACHED TO STRUCTURE.

PROPOSED CONDUIT AND JUNCTION BOXES SHALL BE INSTALLED IN SUCH A MANNER TO ALLOW FOR THE FUTURE INSTALLATION OF FIBER OPTIC CABLE

ALL PROPOSED CONDUIT AND JUNCTION BOXES SHALL BE GROUNDED IN ACCORDANCE WITH NEC REQUIREMENTS

● INDICATES NON-OPERATIONAL LUMINAIRE

EXTEND NEW CIRCUIT FROM EX. JUNCTION BOX

NOTE LIGHTING UNIT IN BOLD PRNT REPRESENTS POLES TO BE LEFT IN PLACE.
FOR INFORMATION ONLY SEE SHEET NO. 4 FOR QUANTITIES

CONNECT POLE #1 USING EX. CIRCUIT

JUN BX SS AS 24X24X10 1.0 EACH

JUN BX SS AS 24X24X10 1.0 EACH

CON AT ST 2 SS

BILL OF MATERIALS		
ITEM DESCRIPTION	UNIT	TOTAL QTY.
CLEAN, RELAMP AND MAINTENANCE OF EXISTING LUMINAIRE	EACH	3.0
CLEAN AND RELAMP EXISTING LUMINAIRE	EACH	6.0
JUNCTION BOX, STAINLESS STEEL, ATTACHED TO STRUCTURE, 24" X 24" X 10"	EACH	2.0
ELECTRIC CABLE IN CONDUIT, 600V (XLP-TYPE USE) 1/C NO. 8	FOOT	3375.0
CONDUIT ATTACHED TO STRUCTURE, 2" DIA., STAINLESS STEEL	FOOT	1125.0

- LEGEND**
- LIGHTING UNIT 400 W HPS 45 MH
 - LIGHTING UNIT 250 W HPS 45 MH
 - ELECTRIC CABLE UNIT DUCT 2-600 V6 P & 1 1/2 XLPG
 - ⊠ 200 AMP 240 480V 1Ø POWER SUPPLY
 - GALVANIZED STEEL CONDUIT PUSH
 - LIGHT POLE TO REMAIN
 - 41 LIGHT POLE NUMBER

REVISIONS	
NAME	DATE

NOTE FOR BILL OF MATERIALS SEE SCHEDULE OF QUANTITIES SHEET NO. 4

ILLINOIS DEPARTMENT OF TRANSPORTATION

LIGHTING PLAN
PEORIA COUNTY

SCALE VERT: _____ HORIZ: _____ DATE: _____ DRAWN BY: _____ CHECKED BY: _____

FILE NAME: _____	USER NAME: *USER*	DESIGNED: _____	REVISED: _____
*FILE#		DRAWN: _____	REVISED: _____
	PLOT SCALE: *SCALE*	CHECKED: _____	REVISED: _____
	PLOT DATE: *DATE*	DATE: _____	REVISED: _____

STATE OF ILLINOIS
DEPARTMENT OF TRANSPORTATION

PROPOSED LUMINAIRE AND CONDUIT REPAIR
I-474 & US 24 (PEORIA COUNTY)

SCALE: _____ STA. _____ TO STA. _____

F.A.P. R.T.E.	SECTION	COUNTY	TOTAL SHEETS	SHEET NO.
VAR.	D4 TRAFFIC SIGNALS 2017	VARIOUS	23	6
CONTRACT NO. 68D56			ILLINOIS FED. AID PROJECT	

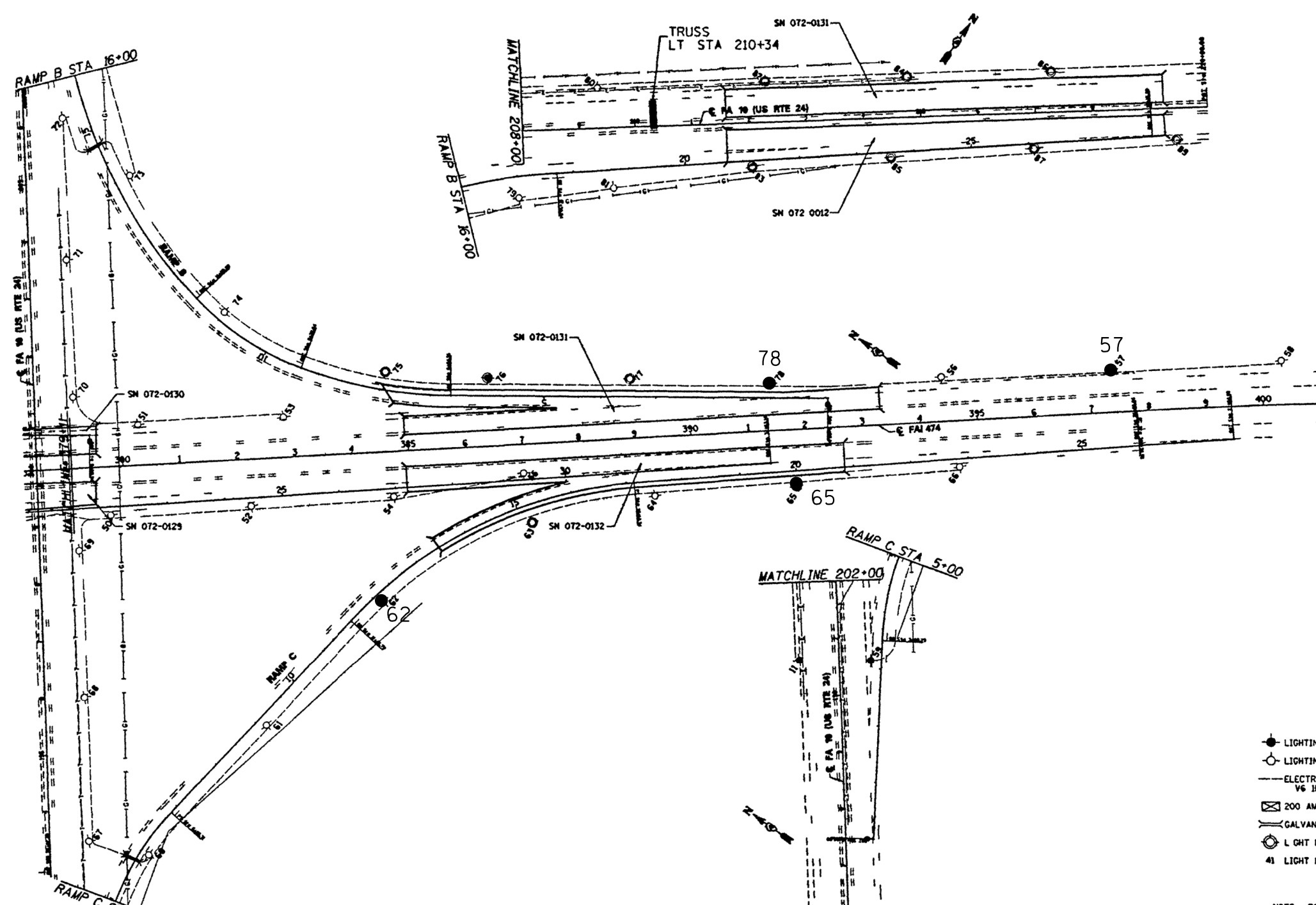
FOR INFORMATION ONLY
SEE SHEET NO 4 FOR QUANTITIES

SECTION	COUNTY	TOTAL SHEETS	SHEET NO.
72-4L&90-GL	PEORIA	23	18
STA. TO STA.			
FILE NO. PROJ. NO.		FILE NO. PROJECT	

● INDICATES NON-OPERATIONAL LUMINAIRE

LIGHT NO.	S. ATTN	45 F	55 FT	400 W HPS	250 W HPS
50	30+63 US 24				
51	329+75 FAI 474				
52	386+30 FAI-4 4				
53	382 28 FAI-474				
54	382+83 FAI-4				
55	384+70 FAI-474				
56	38 400 FAI-474				
57	354+40 FAI-47				
58	397 35 FAI-4 4				
59	408 35 FAI-474				
60	5+05 RAMP C				
61	3+18 RAMP C				
62	12+18 RAMP C				
63	5+18 RAMP C				
64	17+50 RAMP C				
65	20+00 RAMP				
66	22+85 RAMP C				
67	193+45 US 24				
68	196+00 US 24				
69	38+5 US 24				
70	201+38 US 24				
71	203+75 US 24				
72	206+15 US 24				
73	34+00 RAMP B				
74	31+00 RAMP B				
75	4+85 RAMP B				
76	6+00 RAMP B				
77	3+47 RAMP B				
78	400 RAMP B				
79	408 RAMP B				
80	203+35 US 24				
81	203+60 US 24				
82	212 31.44 US 24				
83	211+98.76 US 24				
84	214+73.23 US 24				
85	21+650 US 24				
86	21 30.01 US 2				
87	215+98.31 US 24				
88	228+08 US 24				
89	219+58 US 24				

NOTE: LIGHTING UNIT IN BOLD PRINT REPRESENTS POLES TO BE LEFT IN PLACE.



- LEGEND**
- LIGHTING UNIT 400 W HPS 45 MH
 - LIGHTING UNIT 250 W HPS 45 MH
 - ELECTRIC CABLE UNIT DUCT 2-600 V6 IP & 1 #6 XLPG
 - ⊠ 200 AMP 240/480V 1Φ POWER SUPPLY
 - GALVANIZED STEEL CONDUIT PUSH
 - LIGHT POLE TO REMAIN
 - 41 LIGHT POLE NUMBER

NOTE FOR BILL OF MATERIALS SEE SCHEDULE OF QUANTITIES SHEET NO 4

BILL OF MATERIALS

ITEM DESCRIPTION	UNIT	TOTAL QTY.
CLEAN, RELAMP AND MAINTENANCE OF EXISTING LUMINAIRE	EACH	4.0
CLEAN AND RELAMP EXISTING LUMINAIRE	EACH	2.0

REVISIONS	
NAME	DATE

ILLINOIS DEPARTMENT OF TRANSPORTATION

LIGHTING PLAN
PEORIA COUNTY

SCALE VERT HOR Z
DATE DRAWN BY CHECKED BY

FILE NAME = 68D56 - Final Plans.dgn

USER NAME = keathbr

DESIGNED -

REVISED -

PLOT SCALE = 38.0568' / in.

DRAWN -

REVISED -

PLOT DATE = 2/17/2017

CHECKED -

REVISED -

DATE -

REVISED -

STATE OF ILLINOIS
DEPARTMENT OF TRANSPORTATION

PROPOSED LUMINAIRE AND CONDUIT REPAIR
I-474 & US 24 (PEORIA COUNTY)

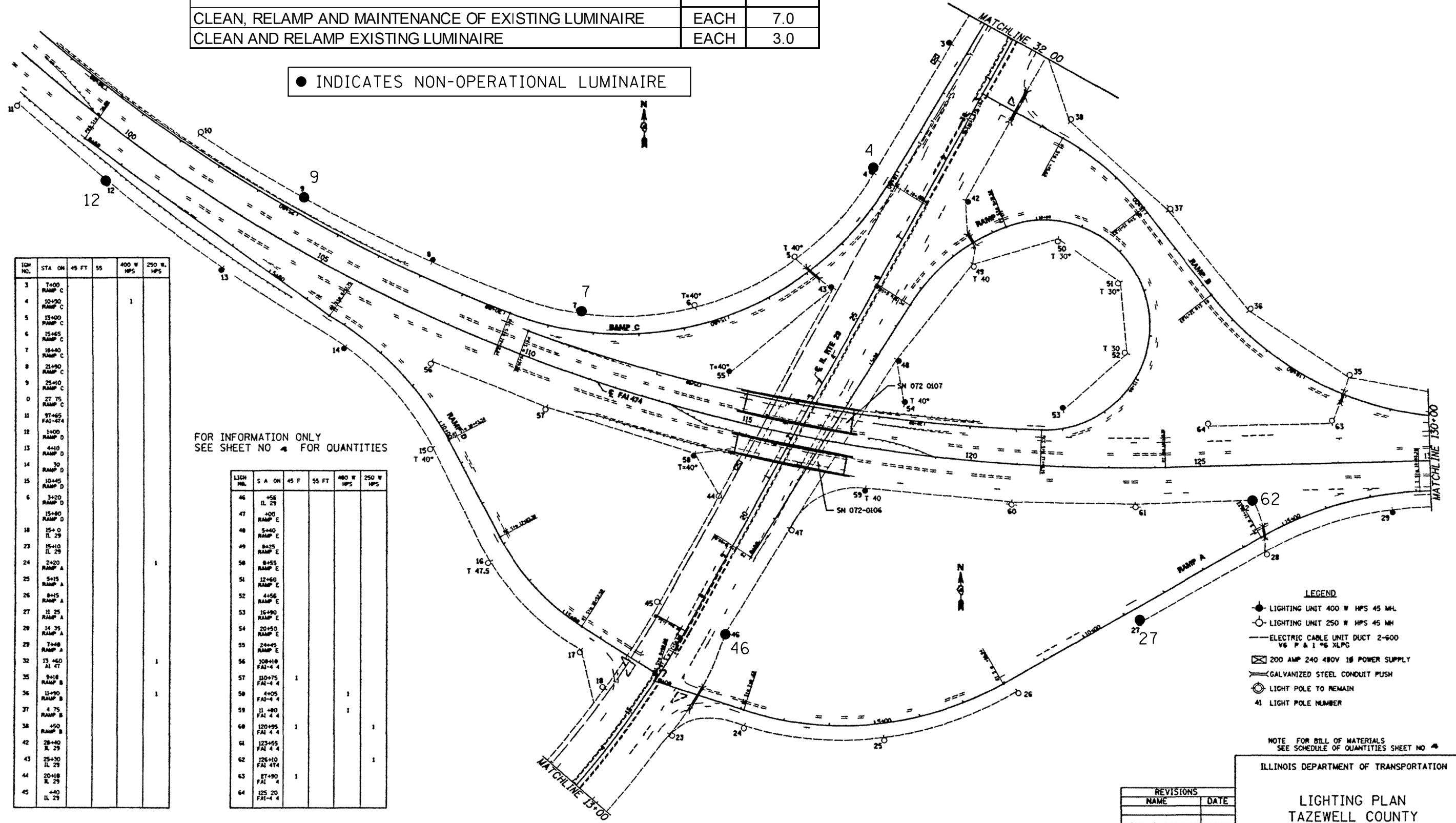
SCALE: STA. TO STA.

F.A.P. RTE.	SECTION	COUNTY	TOTAL SHEETS	SHEET NO.
VAR.	D4 TRAFFIC SIGNALS 2017	VARIOUS	23	7
CONTRACT NO. 68D56			ILLINOIS FED. AID PROJECT	

P.A. NO.	SECTION	COUNTY	TOTAL SHEETS	SHEET NO.
474	72 4L&90-GL	PEORIA	23	7
STA.	TO S.A.			
POL. AND CON. NO.	ILLINOIS	FED. AID PROJECT		

BILL OF MATERIALS		
ITEM DESCRIPTION	UNIT	TOTAL QTY.
CLEAN, RELAMP AND MAINTENANCE OF EXISTING LUMINAIRE	EACH	7.0
CLEAN AND RELAMP EXISTING LUMINAIRE	EACH	3.0

● INDICATES NON-OPERATIONAL LUMINAIRE



IGN. NO.	STA. ON	45 FT	55	400 W HPS	250 W HPS
3	T+00				
4	10+50			1	
5	13+00				
6	15+45				
7	18+40				
8	21+90				
9	25+10				
0	27.75				
11	31+65				
12	1+00				
13	4+10				
14	30				
15	10+45				
6	3+20				
18	15+0				
23	15+10				
24	2+20			1	
25	5+15				
26	8+15				
27	11.25				
28	14.35				
29	7+48				
32	13.40				1
35	3+18				
36	11+90				1
37	4.75				
38	450				
42	28+40				
43	25+30				
44	20+18				
45	440				

FOR INFORMATION ONLY
SEE SHEET NO. 4 FOR QUANTITIES

LIGH. NO.	S.A. ON	45 F	55 FT	400 W HPS	250 W HPS
46	456				
47	400				
48	5+40				
49	8+25				
50	8+55				
51	12+60				
52	4+56				
53	16+90				
54	20+50				
55	2+45				
56	108+18				
57	110+75	1			
58	4+05			1	
59	11.480			1	
60	120+95	1			1
61	123+55				
62	126+10				1
63	27+90	1			
64	125.20				

- LEGEND**
- LIGHTING UNIT 400 W HPS 45 MH
 - LIGHTING UNIT 250 W HPS 45 MH
 - ELECTRIC CABLE UNIT DUCT 2-600 V6 P & 1 1/2 XLPC
 - ⊠ 200 AMP 240 480V 1Φ POWER SUPPLY
 - GALVANIZED STEEL CONDUIT PUSH
 - LIGHT POLE TO REMAIN
 - 41 LIGHT POLE NUMBER

NOTE: FOR BILL OF MATERIALS SEE SCHEDULE OF QUANTITIES SHEET NO. 4

ILLINOIS DEPARTMENT OF TRANSPORTATION

**LIGHTING PLAN
TAZEWELL COUNTY**

REVISIONS	
NAME	DATE

SCALE: VERT HORIZ
DATE: DRAWN BY: CHECKED BY:

FILE NAME = 68D56 - Final Plans.dgn

USER NAME = keathbr
PLOT SCALE = 38.0568' / in.
PLOT DATE = 2/17/2017

DESIGNED -
DRAWN -
CHECKED -
DATE -

REVISED -
REVISED -
REVISED -
REVISED -

**STATE OF ILLINOIS
DEPARTMENT OF TRANSPORTATION**

**PROPOSED LUMINAIRE AND CONDUIT REPAIR
I-474 & IL 29 (TAZEWELL COUNTY)**

SCALE: STA. TO STA.

F.A.P. RTE.	SECTION	COUNTY	TOTAL SHEETS	SHEET NO.
VAR.	D4 TRAFFIC SIGNALS 2017	VARIOUS	23	8
ILLINOIS FED. AID PROJECT			CONTRACT NO. 68D56	

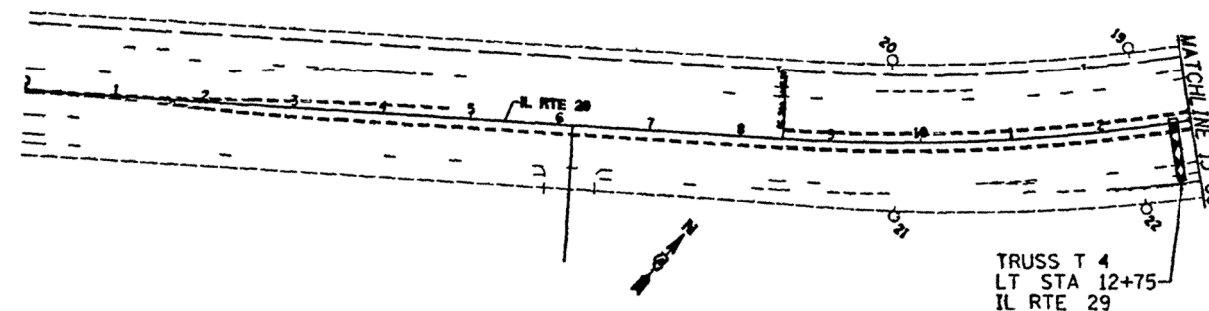
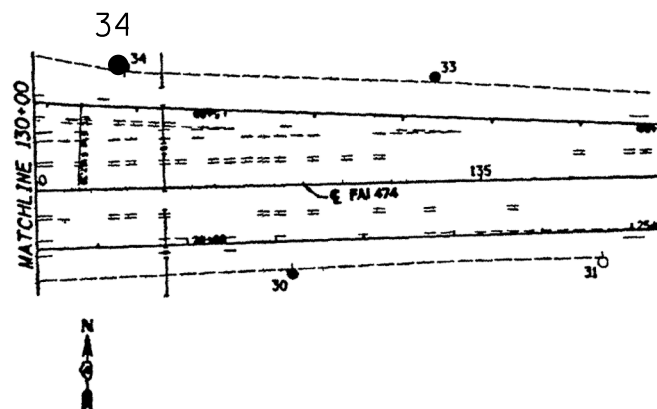
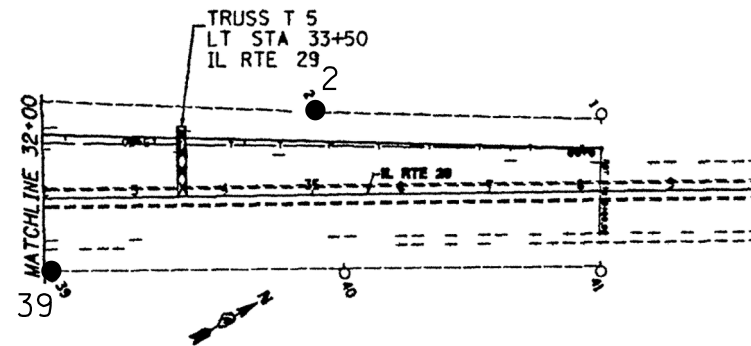
FILE NO.	SECTION	COUNTY	SHEET NO.	TOTAL SHEETS
474	72-4L&90-GL	PEORIA	23	23
STA.		TO STA.		
FILE NO.	SECTION	COUNTY	SHEET NO.	TOTAL SHEETS

BILL OF MATERIALS		
ITEM DESCRIPTION	UNIT	TOTAL QTY.
CLEAN, RELAMP AND MAINTENANCE OF EXISTING LUMINAIRE	EACH	3.0
CLEAN AND RELAMP EXISTING LUMINAIRE	EACH	2.0

● INDICATES NON-OPERATIONAL LUMINAIRE

LIGHT NO.	STATION	45 W	75 FT	400 W HPS	250 W HPS
1	0+00 RAMP C	1			1
2	3+20 RAMP C	1		1	
19	12+40 IL 29	1			
20	9+70 IL 29	1			1
21	9+70 IL 29				1
22	12+40 IL 29				1
30	21+15 RAMP A		1		
31	24+65 RAMP A				1
33	2+65 RAMP B			1	
34	6+15 RAMP B				
38	32+05 IL 29		1	1	
40	35+35 IL 29	1			1
41	38+20 IL 29				1

FOR INFORMATION ONLY
SEE SHEET NO. 4 FOR QUANTITIES



- LEGEND**
- LIGHTING UNIT 400 W HPS 45 MH
 - LIGHTING UNIT 250 W HPS 45 MH
 - ELECTRIC CABLE UNIT DUCT 2-600 V6 1P & 1 1/2 XLPC
 - ⊠ 200 AMP 240 480V 1Ø POWER SUPPLY
 - GALVANIZED STEEL CONDUIT PUSH
 - LIGHT POLE TO REMAIN
 - 41 LIGHT POLE NUMBER

NOTE FOR BILL OF MATER ALS
SEE SCHEDULE OF QUANTITIES SHEET NO. 4

REVISIONS	
NAME	DATE

ILLINOIS DEPARTMENT OF TRANSPORTATION

LIGHTING PLAN
TAZEWELL COUNTY

SCALE VERT HORIZ DATE

DRAWN BY
CHECKED BY

FILE NAME = 68D56 - Final Plans.dgn	USER NAME = keathbr	DESIGNED -	REVISED -
		DRAWN -	REVISED -
	PLOT SCALE = 38.0588 1/ in.	CHECKED -	REVISED -
	PLOT DATE = 2/17/2017	DATE -	REVISED -

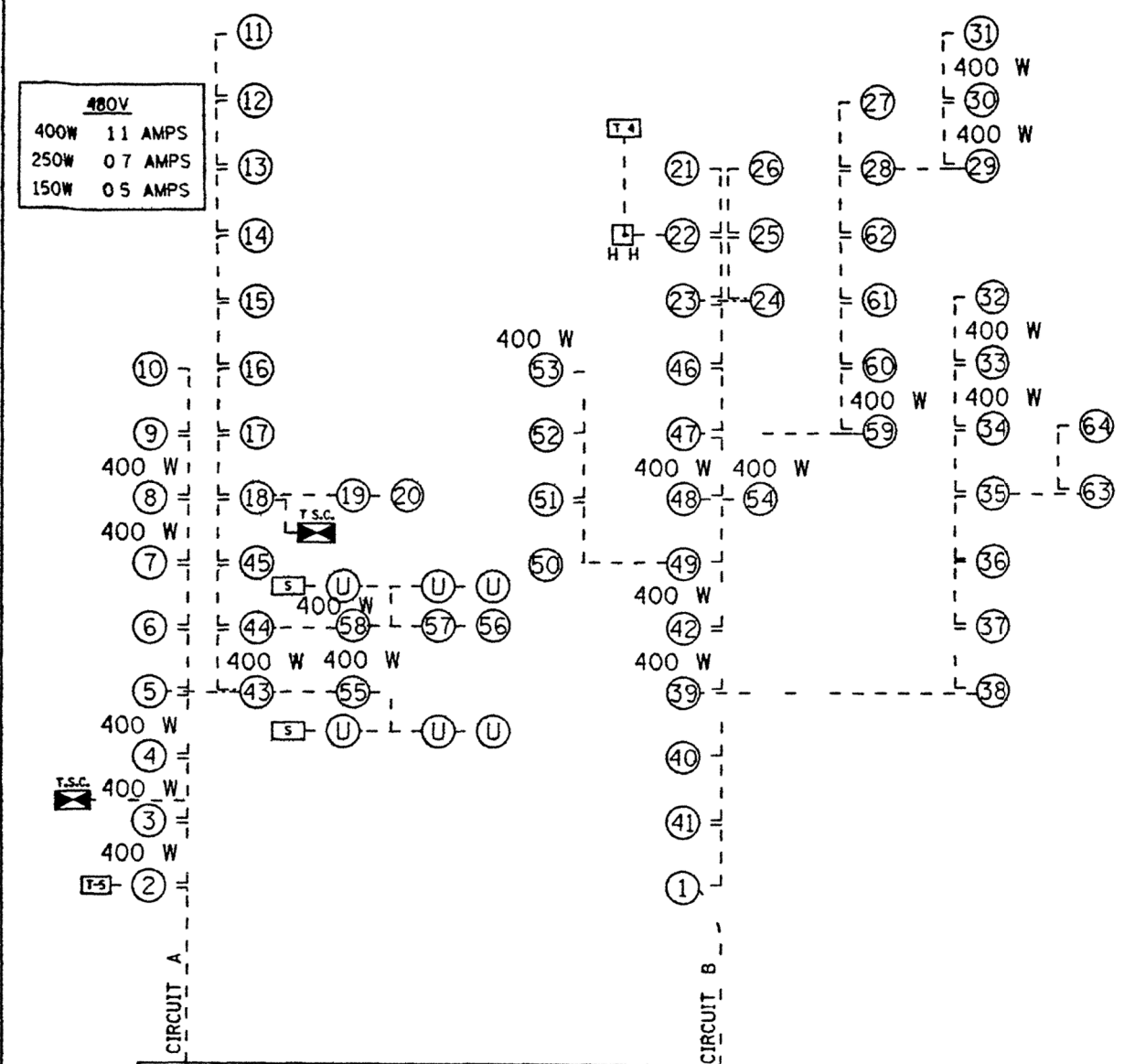
STATE OF ILLINOIS
DEPARTMENT OF TRANSPORTATION

PROPOSED LUMINAIRE AND CONDUIT REPAIR
I-474 & IL 29 (TAZEWELL COUNTY)

SCALE: STA. TO STA.

F.A.P. RTE.	SECTION	COUNTY	TOTAL SHEETS	SHEET NO.
VAR.	D4 TRAFFIC SIGNALS 2017	VARIOUS	23	9
			CONTRACT NO. 68D56	
ILLINOIS FED. AID PROJECT				

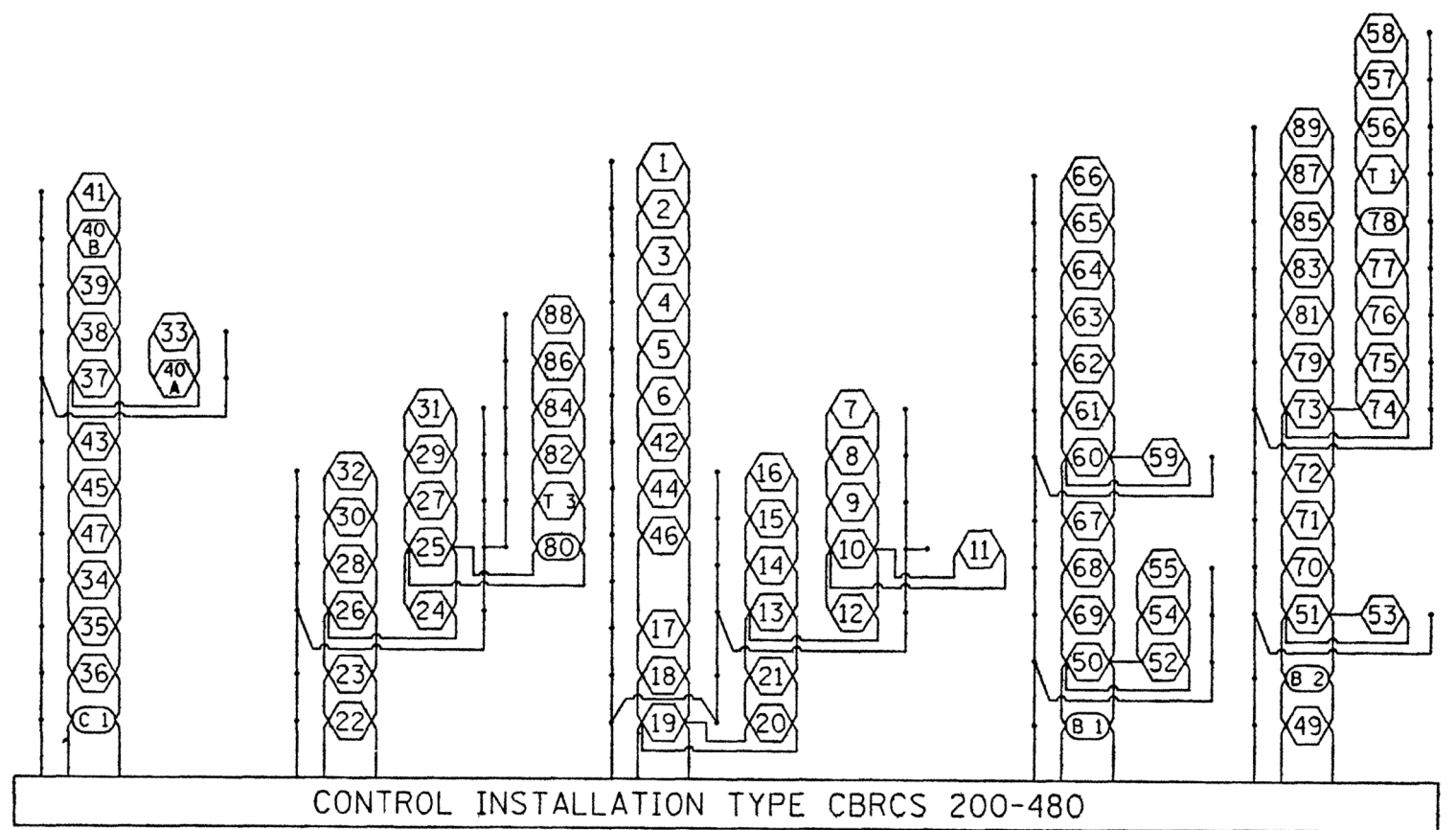
FILE NO.	SECTION	COUNTY	TOTAL SHEETS	SHEET NO.
474			23	23
STA.		TO STA.		
72 4 90 6		PEORIA & TAZEWELL		



CONTROL CABINET
 CONTROL INSTALLATION TYPE CBRCs 200 480 &
 CONTROL INSTALLATION TYPE CBRCs 100 480

TAZEWELL COUNTY

- ⑦ LIGHT POLE NUMBER
- T-5 TRUSS SIGN
- S BRIDGE MOUNT SIGN
- U UNDERPASS LIGHT
- T.S.C. TRAFFIC SIGNAL CONTROLLER



CONTROL INSTALLATION TYPE CBRCs 200-480

PEORIA COUNTY

- ③ LIGHT POLE NUMBER
- C-1 CANTILEVER SIGN
- B-1 BRIDGE MOUNT SIGN
- T-3 TRUSS SIGN

FOR INFORMATION ONLY

SEE PLAN SHEET 4 FOR QUANTITIES

ILLINOIS DEPARTMENT OF TRANSPORTATION
 CIRCUIT DIAGRAMS
 I-474 & US 24 (PEORIA COUNTY) AND I-474 & IL 29 (TAZEWELL COUNTY)
 CONTRACT NO. 68D56

FILE NAME = 68D56 - Final Plans.dgn	USER NAME = keathbr	DESIGNED -	REVISED -	STATE OF ILLINOIS DEPARTMENT OF TRANSPORTATION	EXISTING LIGHTING CIRCUIT DIAGRAM I-474 & US 24 (PEORIA COUNTY) AND I-474 & IL 29 (TAZEWELL COUNTY)	F.A.P. RTE.	SECTION	COUNTY	TOTAL SHEETS	SHEET NO.	
		DRAWN -	REVISED -			VAR.	D4 TRAFFIC SIGNALS 2017	VARIOUS	23	10	
		CHECKED -	REVISED -			CONTRACT NO. 68D56					
		DATE -	REVISED -			SCALE:	STA.	TO STA.	ILLINOIS FED. AID PROJECT		

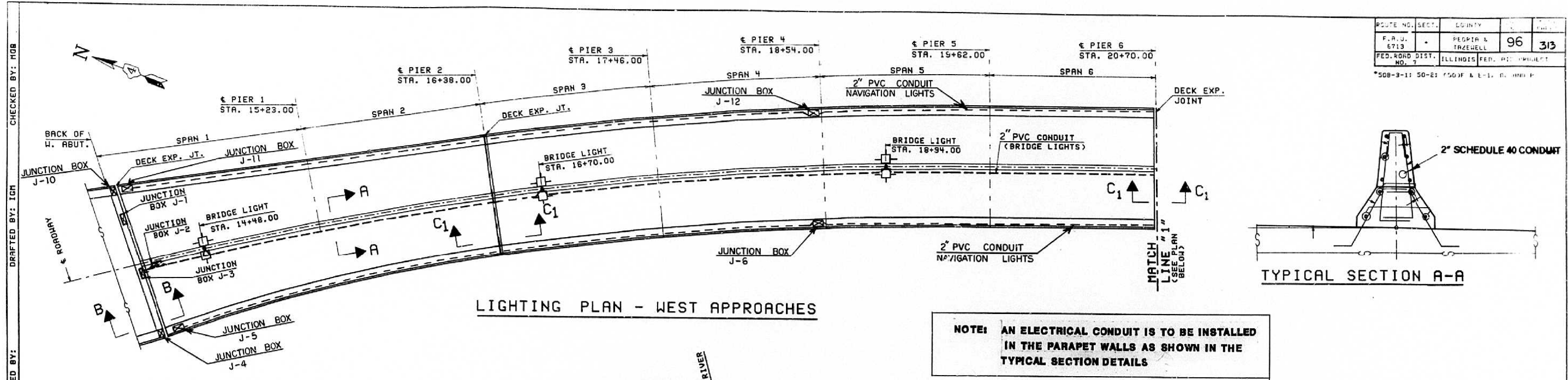


BILL OF MATERIALS		
ITEM DESCRIPTION	UNIT	TOTAL QTY.
UNDERGROUND CONDUIT, PVC, 1 1/2" DIA.	FOOT	150.0
DRILL EXISTING HANDHOLE	EACH	1.0
CAT 5 ETHERNET CABLE	FOOT	248.0
CLOSED CIRCUIT TELEVISION CAMERA INSTALLATION	EACH	1.0
CONDUIT ATTACHED TO STRUCTURE, 1/2" DIA. STAINLESS STEEL	EACH	30.0
JUNCTION BOX (SPECIAL)	EACH	1.0

FILE NAME = 68D56 - Final Plans.dgn	USER NAME = keathbr	DESIGNED -	REVISED -	STATE OF ILLINOIS DEPARTMENT OF TRANSPORTATION	PROPOSED CCTV CAMERA INSTALLATION I-74 & NEBRASKA (PEORIA)	F.A.P. RTE.	SECTION	COUNTY	TOTAL SHEETS	SHEET NO.
	PLOT SCALE = 38.0568' / in.	CHECKED -	REVISED -			VAR.	D4 TRAFFIC SIGNALS 2017	VARIOUS	23	11
	PLOT DATE = 2/17/2017	DATE -	REVISED -			CONTRACT NO. 68D56			ILLINOIS FED. AID PROJECT	

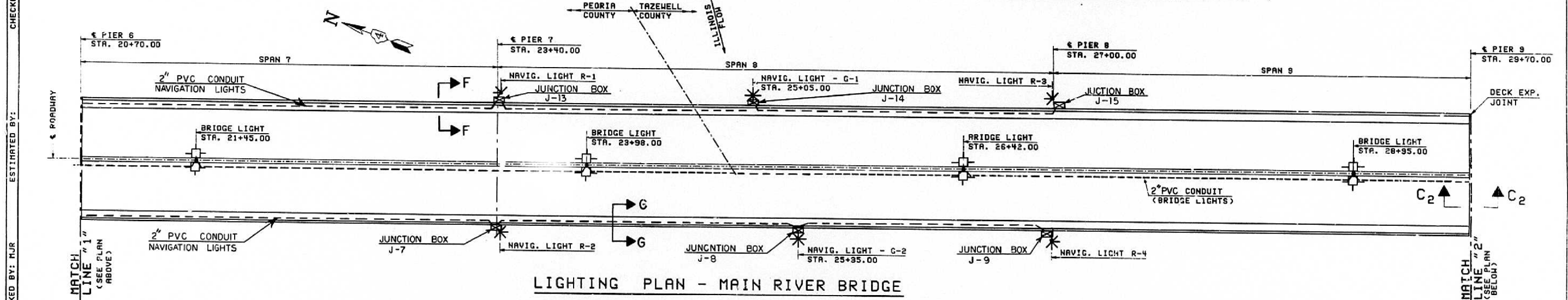
ROUTE NO.	SECT.	COUNTY	SHEET NO.
F.A.U. 6713	-	PEORIA & TAZEWELL	96 313
FED. ROAD DIST. NO. 7		ILLINOIS FED. AID PROJECT	

*508-3-11 50-21 1500' & E-11 D. HAN P.



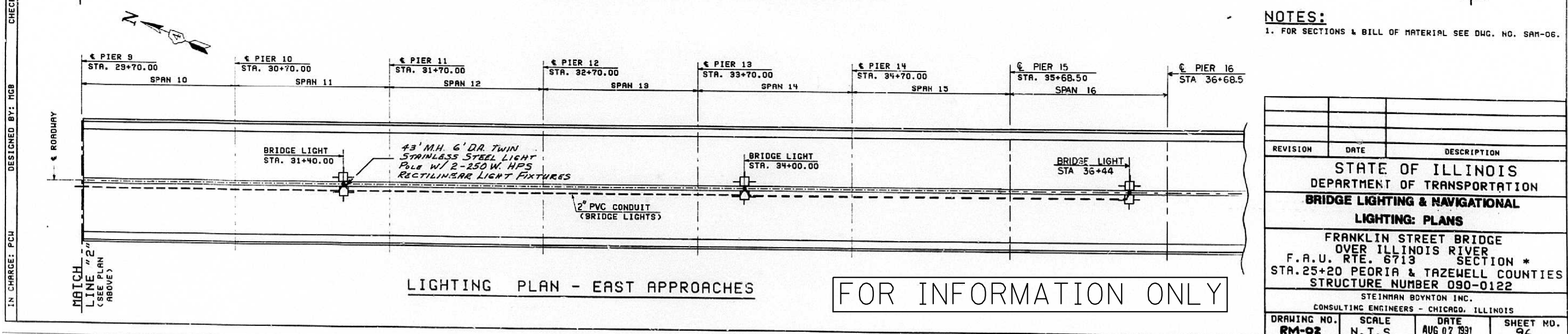
LIGHTING PLAN - WEST APPROACHES

NOTE: AN ELECTRICAL CONDUIT IS TO BE INSTALLED IN THE PARAPET WALLS AS SHOWN IN THE TYPICAL SECTION DETAILS



LIGHTING PLAN - MAIN RIVER BRIDGE

NOTES:
1. FOR SECTIONS & BILL OF MATERIAL SEE Dwg. NO. SAM-06.



LIGHTING PLAN - EAST APPROACHES

FOR INFORMATION ONLY

REVISION	DATE	DESCRIPTION
STATE OF ILLINOIS DEPARTMENT OF TRANSPORTATION BRIDGE LIGHTING & NAVIGATIONAL LIGHTING PLANS		
FRANKLIN STREET BRIDGE OVER ILLINOIS RIVER F.A.U. RTE. 6713 SECTION * STA. 25+20 PEORIA & TAZEWELL COUNTIES STRUCTURE NUMBER 090-0122		
STEINMAN BOYNTON INC. CONSULTING ENGINEERS - CHICAGO, ILLINOIS		
DRAWING NO. RM-02	SCALE N.T.S.	DATE AUG 07 1991
		SHEET NO. 96

FILE NAME = 68056 - Final Plans.dgn

USER NAME = keathbr	DESIGNED -	REVISED -
PLOT SCALE = 38.0588' / in.	DRAWN -	REVISED -
PLOT DATE = 2/17/2017	CHECKED -	REVISED -
	DATE -	REVISED -

STATE OF ILLINOIS
DEPARTMENT OF TRANSPORTATION

EXISTING LIGHTING PLANS
IL 40 - BOB MICHEL BRIDGE (PEORIA / EAST PEORIA)

F.A.P. RTE.	SECTION	COUNTY	TOTAL SHEETS	SHEET NO.
VAR.	D4 TRAFFIC SIGNALS 2017	VARIOUS	23	13
CONTRACT NO. 68D56				

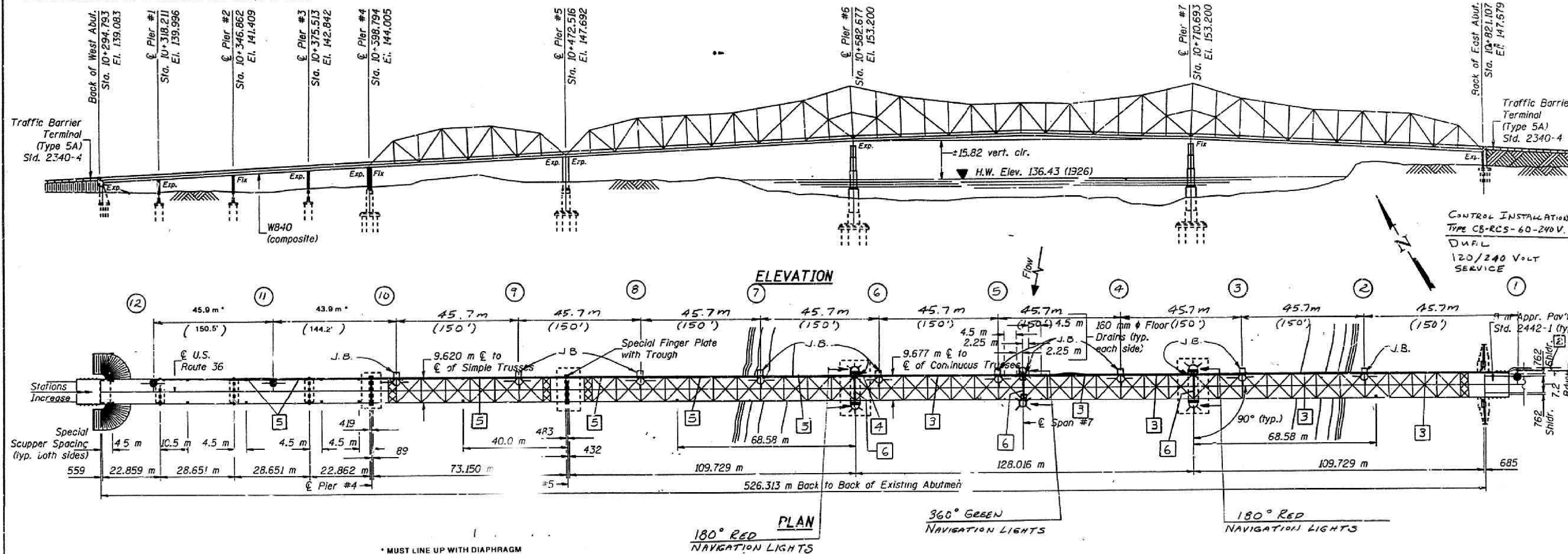
CHECKED BY: MOB
 DRAFTED BY: IGM
 ESTIMATED BY: MJR
 CHECKED BY: MCB
 DESIGNED BY: MCB
 IN CHARGE: PCU

STATE OF ILLINOIS
DEPARTMENT OF TRANSPORTATION

F.A.P. RTE.	SECTION	COUNTY	TOTAL SHEETS	SHEET NO.
315	140B-I-4	MASON FULTON	23	17
STA. 10+646.69		TO STA. 10+710.693		
FED. ROAD DIST. NO.		ILLINOIS FED. AID PROJECT		

Bench Mark: B.M. #62 - S. & W. vertical in 457 mm Elm - 30.48 m Lt. of Sta. 10+855.47 Elev. 142.366 U.S.G.S. (1929) Datum.
 B.M. #61 - S. & N. Horiz. in power pole #4 - 30.48 m Lt. of Sta. 10+500.38 Elev. 134.844 - U.S.G.S. (1929) Datum.
 Existing Structure: S.N. 063-0002. The 3 span continuous truss with a single span truss and a 4 span continuous wide flange beam approach was built in 1935 as S.B.I. Route 78, Section 140B. It was rehabilitated in 1962 and 1970. The existing bridge width is ±8.4 m face to face of a curb and a sidewalk and length is ±526.3 m back to back of abutments.
 The truss floor system and approach superstructures shall be removed and replaced along with other substructure repairs. The structure shall be closed during construction using ferry service for traffic.
 No salvage.

Note: All dimensions are in millimeters (mm) except as noted.



FOR INFORMATION ONLY

LEGEND

1	2-1/c # 8 XLP, 1-1/c # 8 XLPG 1" P.		CONTROL INSTALLATION DUAL, 60 AMP. 240 VOLT
2	2-1/c # 8 XLP, 1-1/c # 8 XLPG 1" P.		250 WATT H.P.S. HORIZONTAL MOUNT LUMINAIRE, SPECIAL BRACKET MOUNT, LIGHT DISTRIBUTION TYPE MS-3
3	2-1/c # 8 XLP, 1-1/c # 8 XLPG (RDWY LTG.) AND 3-1/c # 8 XLP (NAV. LTG.) IN 2" RIGID G.S. CONDUIT		180 DEGREE, DUAL LAMP CAVITY, RED NAVIGATION LIGHT
4	2-1/c # 8 XLP, 1-1/c # 8 XLPG (RDWY LTG.) AND 3-1/c # 8 XLP (NAV. LTG.) IN 2" RIGID G.S. CONDUIT		360 DEGREE, DUAL LAMP CAVITY, GREEN NAVIGATION LIGHT
5	2-1/c # 8 XLP, 1-1/c # 8 XLPG (RDWY LTG.) IN 2" RIGID G.S. CONDUIT		6" x 6" x 4" STAINLESS STEEL JUNCTION BOX
6	2-1/c # 10 XLP, (NAVIGATION LTG.) IN 3/4" RIGID G.S. CONDUIT		

BILL OF MATERIALS

METRIC DESCRIPTION	UNIT	QUANTITY TOTALS
UD 2# 8 XLP, 1# 8 XLPG 20 P	METER	40.0
UD 2# 8 XLP, 1# 6 XLPG 25 P	METER	40.0
Trench & Backfill For Electrical Work	METER	30.0
Conduit Attached to Structure 20 MM Dia. Galv. Steel	METER	187.5
Conduit Attached to Structure 50 MM Dia. Galv. Steel	METER	502.9
Electric Cable in Conduit, 600 V, (XLP) 1/c # 10	METER	481.1
Electric Cable in Conduit, 600 V, (XLP) 1/c # 8	METER	1400.7
Electric Cable in Conduit, 600 V, (XLP) 1/c # 6	METER	685.5
Junction Box, Stainless Steel, Attached To Structure 200 MM x 150 MM x 100 MM	EACH	12.0
Electric Cable in Conduit, Remove All Conductors	METER	
Conduit Pushed, 50 MM Dia. Intermediate Metal	METER	0.0
Light Pole Foundation 600 mm Dia	EACH	1.0
Light Pole Aluminum 10.5 m MH, 1.2 m Davit Arm	EACH	3.0
Luminaire, Sodium Vapor, Horizontal Mount 250 Watt	EACH	12.0
Lighting Controller	EACH	1.0
Removal of Existing Lighting Unit - No Salvage	EACH	7.0
Removal of Existing Navigation Lighting Unit - Salvage	EACH	8.0
Luminaire Mounting Bracket - Special	EACH	9.0
Waterway Obstruction Warning Luminaire	EACH	6.0

REVISIONS		ILLINOIS DEPARTMENT OF TRANSPORTATION HIGHWAY LIGHTING F.A.P. ROUTE 315 SEC. 140B-I-4 FULTON & MASON COUNTIES STA. 10+646.69 STRUCTURE NO. 063-0002
NAME	DATE	

NOTE - SEE BRIDGE PLANS FOR APPROACH MOUNTING BRACKET

FILE NAME = 68D56 - Final Plans.dgn

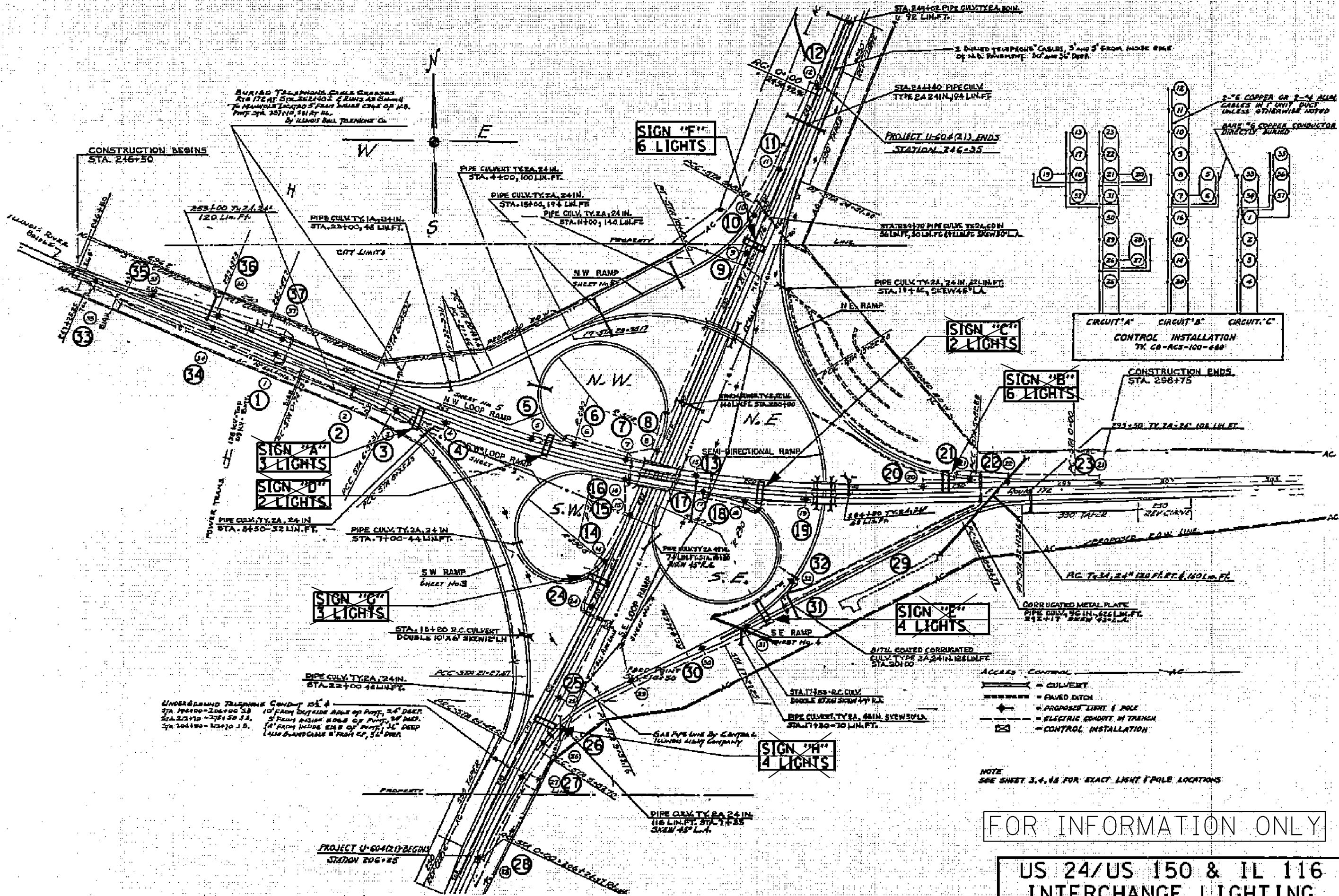
USER NAME = keathbr	DESIGNED -	REVISED -
PLOT SCALE = 38.0588' / in.	DRAWN -	REVISED -
PLOT DATE = 2/17/2017	CHECKED -	REVISED -
	DATE -	REVISED -

STATE OF ILLINOIS
DEPARTMENT OF TRANSPORTATION

EXISTING LIGHTING PLANS
US 136 - HAVANA BRIDGE

SCALE: STA. TO STA.

F.A.P. RTE.	SECTION	COUNTY	TOTAL SHEETS	SHEET NO.
VAR.	D4 TRAFFIC SIGNALS 2017	VARIOUS	23	14
			CONTRACT NO. 68D56	
ILLINOIS FED. AID PROJECT				



FILE NAME = 68D56 - Final Plans.dgn
 USER NAME = keathbr
 PLOT SCALE = 38.0588 1/4 in.
 PLOT DATE = 2/17/2017

DESIGNED -	REVISED -
DRAWN -	REVISED -
CHECKED -	REVISED -
DATE -	REVISED -

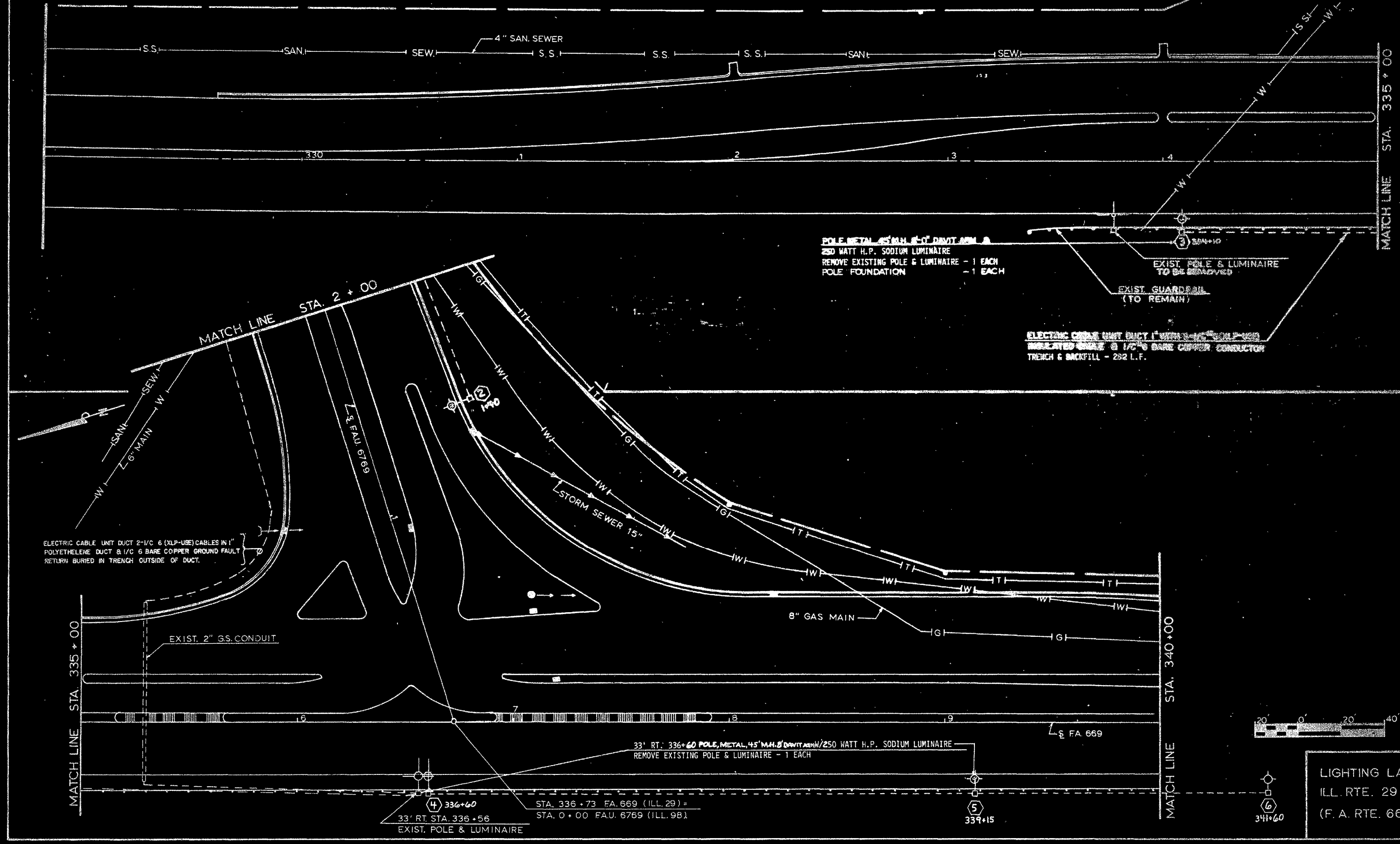
STATE OF ILLINOIS
 DEPARTMENT OF TRANSPORTATION

EXISTING LIGHTING PLANS
 US 24 & IL 116 INTERCHANGE - EAST PEORIA
 SCALE: STA. TO STA.

F.A.P. RTE.	SECTION	COUNTY	TOTAL SHEETS	SHEET NO.
VAR.	D4 TRAFFIC SIGNALS 2017	VARIOUS	23	15
			CONTRACT NO. 68D56	
ILLINOIS FED. AID PROJECT				

T25N R5W 3PM
SECTION 23

FA. 669 29 II-HL-1 TAZEWELL 5 3
COUNTY
DATE



LIGHTING LAYOUT
ILL. RTE. 29 & 98
(F. A. RTE. 669)

FILE NAME = 68056 - Final Plans.dgn	USER NAME = keathbr	DESIGNED -	REVISED -
		DRAWN -	REVISED -
	PLOT SCALE = 38.0568' / in.	CHECKED -	REVISED -
	PLOT DATE = 2/17/2017	DATE -	REVISED -

STATE OF ILLINOIS
DEPARTMENT OF TRANSPORTATION

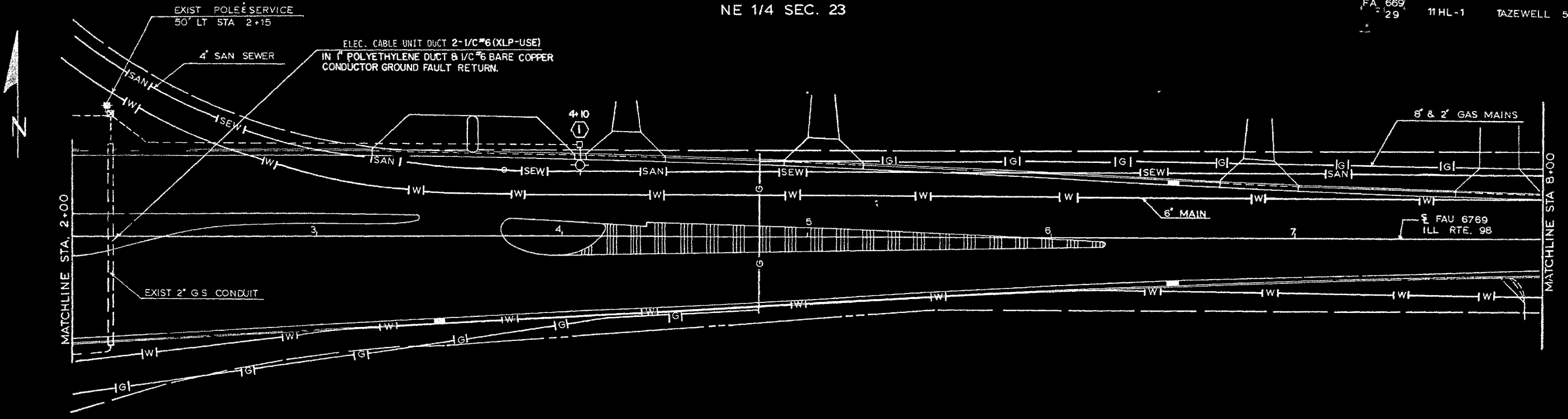
EXISTING LIGHTING PLANS
IL 29 & IL 98 - NORTH PEKIN

F.A.P. RTE.	SECTION	COUNTY	TOTAL SHEETS	SHEET NO.
VAR.	D4 TRAFFIC SIGNALS 2017	VARIOUS	23	16
CONTRACT NO. 68056				
ILLINOIS FED. AID PROJECT				

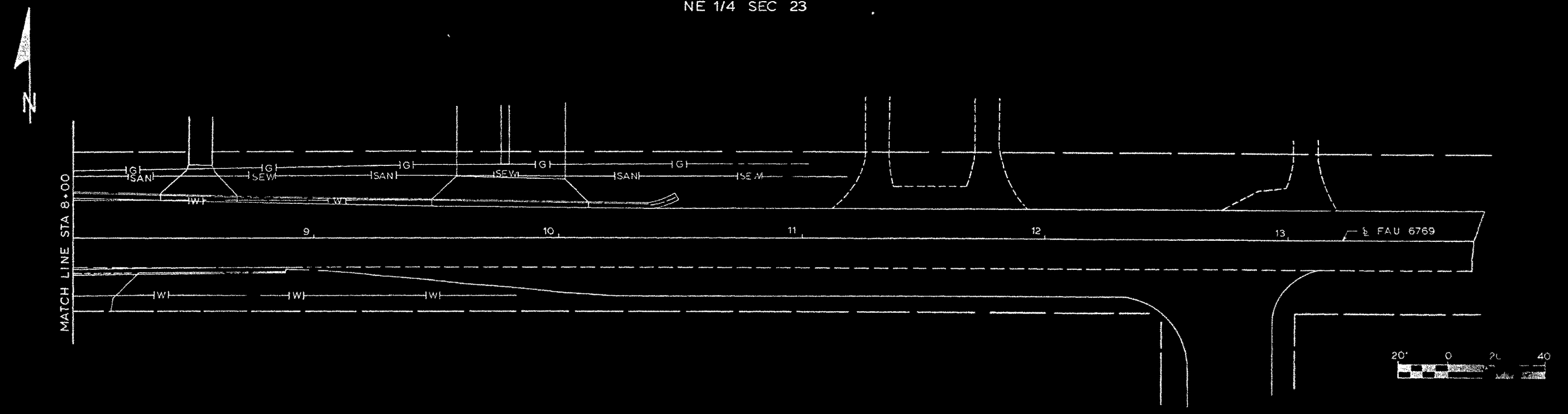
SCALE: STA. TO STA.

T25N R5W 3PM
NE 1/4 SEC. 23

FA 669
29 11 HL-1 TAZEWELL 5 4



T25N. R5W. 3PM.
NE 1/4 SEC 23

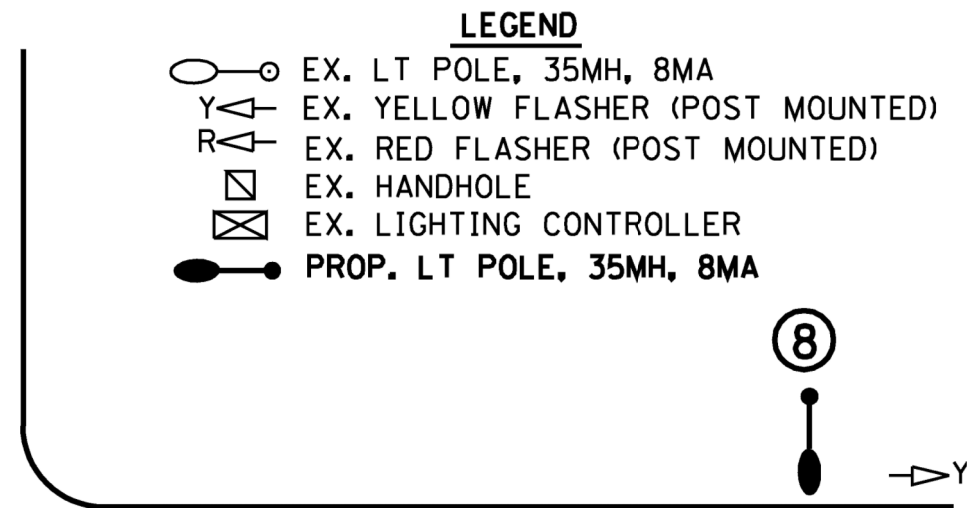
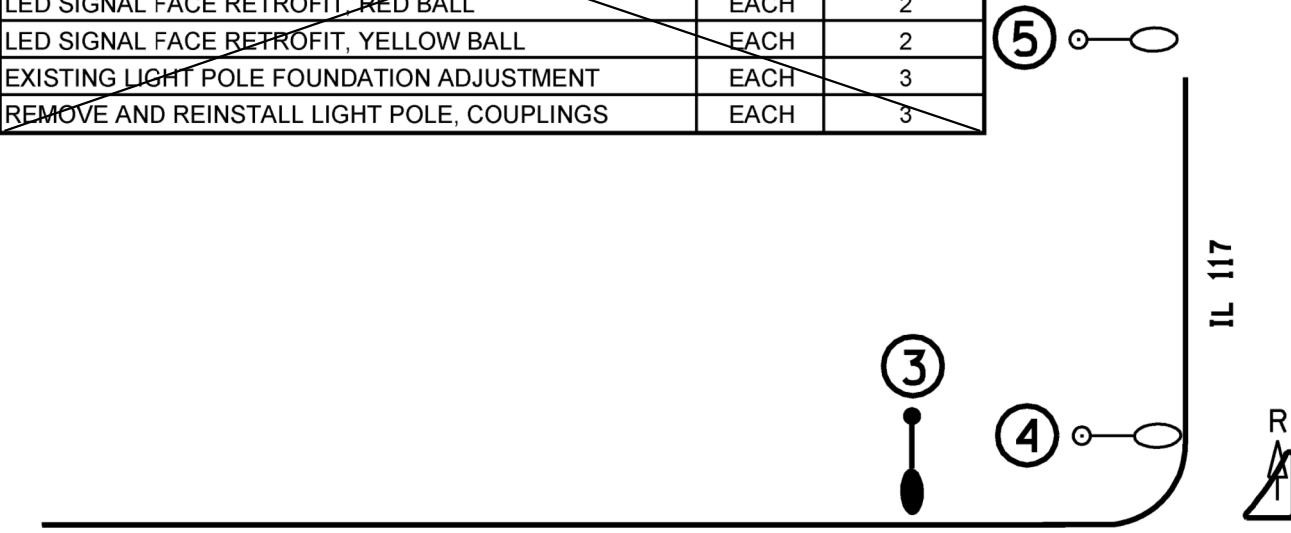


LIGHTING LAYOUT
ILL. RTE 29 & 98
(FA 669)

FILE NAME = 68056 - Final Plans.dgn	USER NAME = keathbr	DESIGNED -	REVISED -	STATE OF ILLINOIS DEPARTMENT OF TRANSPORTATION	EXISTING LIGHTING PLANS IL 29 & IL 98 - NORTH PEKIN	F.A.P. RTE.	SECTION	COUNTY	TOTAL SHEETS	SHEET NO.
	PLOT SCALE = 38.0568' / in.	CHECKED -	REVISED -			VAR.	D4 TRAFFIC SIGNALS 2017	VARIOUS	23	17
	PLOT DATE = 2/17/2017	DATE -	REVISED -			CONTRACT NO. 68056			ILLINOIS FED. AID PROJECT	

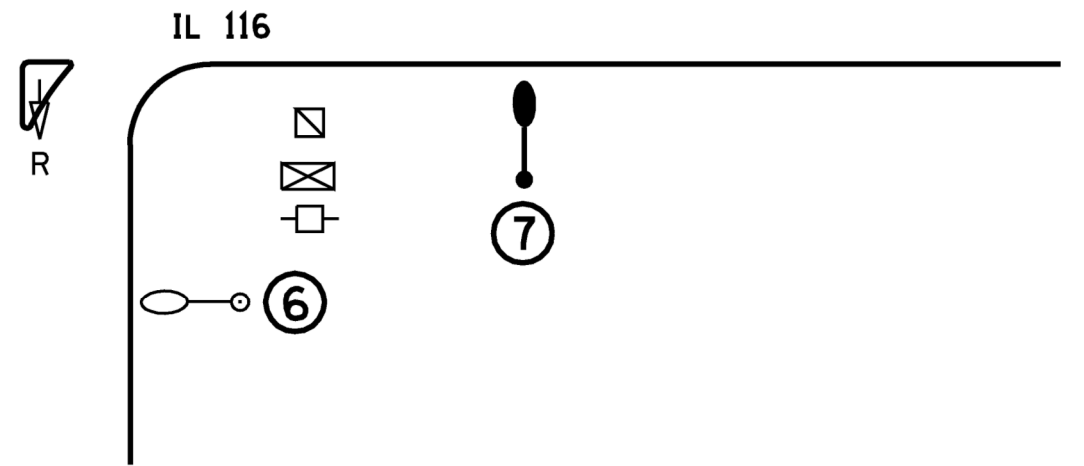
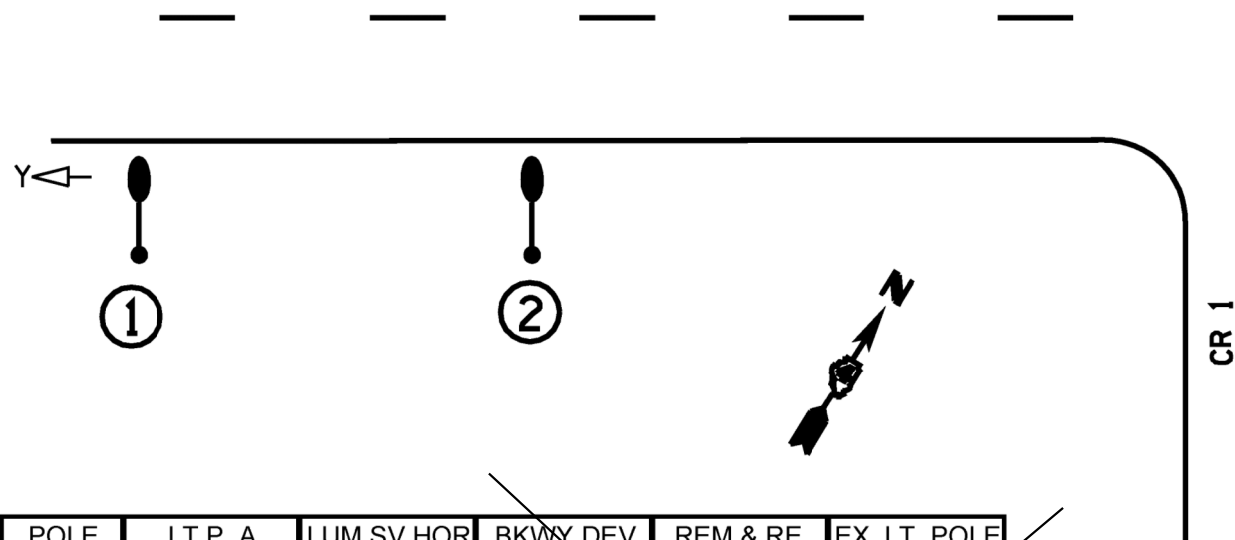
ITEM DESCRIPTION	UNIT	QUANTITY
LUMINAIRE, SODIUM VAPOR, HORIZONTAL MT, 250 W	EACH	5
LIGHT POLE, ALUMINUM, 35 FT. M.H., 8 FT. DAVIT ARM	EACH	5
BREAKAWAY DEVICE, COUPLING, WITH SS SCREEN	EACH	20
LED SIGNAL FACE RETROFIT, RED BALL	EACH	2
LED SIGNAL FACE RETROFIT, YELLOW BALL	EACH	2
EXISTING LIGHT POLE FOUNDATION ADJUSTMENT	EACH	3
REMOVE AND REINSTALL LIGHT POLE, COUPLINGS	EACH	3

ROUTE		SECTION	COUNTY	SHEET	
MKD.	DESIG.	D4 HIGHWAY LIGHTING 2008	TAZEWELL WOODFORD	TOTAL	NO.
VARIOUS	VARIOUS			16	7



LEGEND

- EX. LT POLE, 35MH, 8MA
- EX. YELLOW FLASHER (POST MOUNTED)
- EX. RED FLASHER (POST MOUNTED)
- EX. HANDHOLE
- EX. LIGHTING CONTROLLER
- PROP. LT POLE, 35MH, 8MA

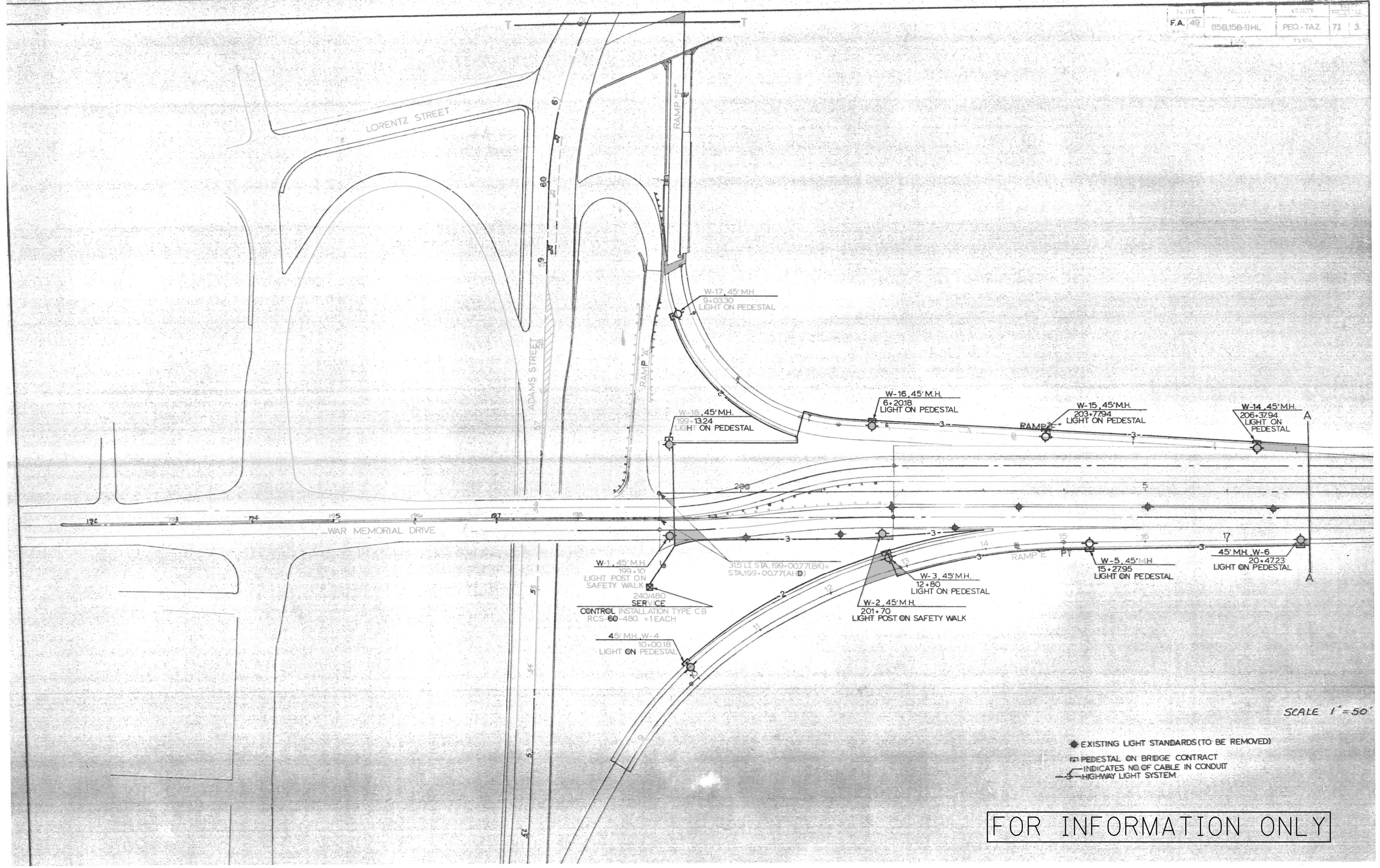


POLE NUMBER	LT P, A 35 MH 8MA	LUM SV HOR MT 150W	BKWY DEV COU SS SCR	REM & RE LT P COU	EX. LT. POLE FDN ADJUST
1	1	1	4		1
2	1	1	4		1
3	1	1	4		1
4				1	
5				1	
6				1	
7	1	1	4		
8	1	1	4		

FOR INFORMATION ONLY

NOT TO SCALE

IL 116 & IL 117
LIGHTING AND FLASHER
DETAIL
WOODFORD COUNTY



FOR INFORMATION ONLY

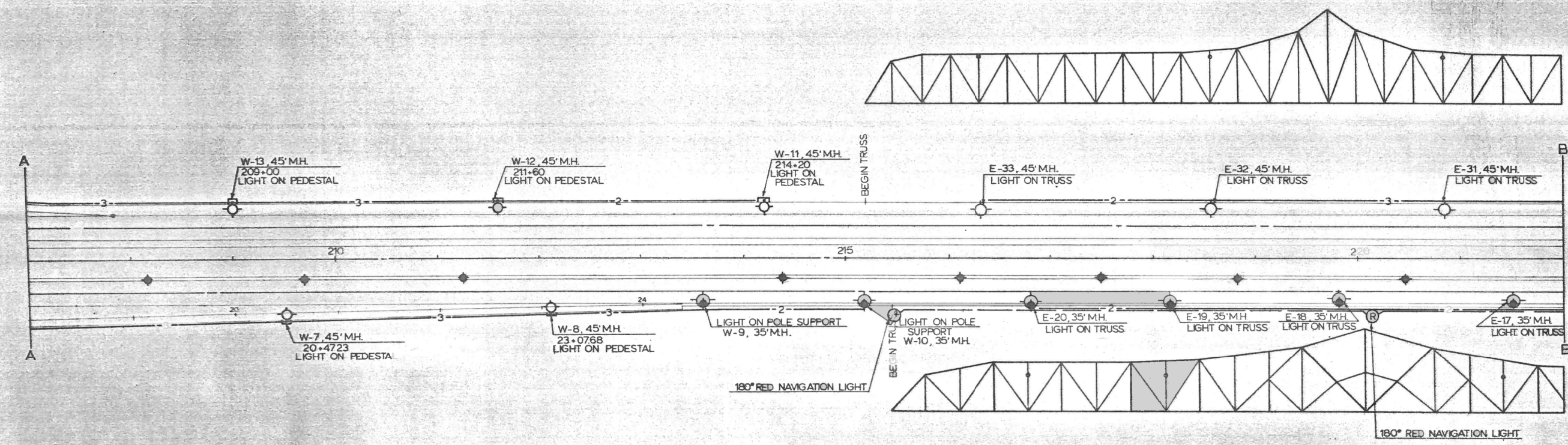
FILE NAME = 68D56 - Final Plans.dgn	USER NAME = keathbr	DESIGNED -	REVISED -
		DRAWN -	REVISED -
	PLOT SCALE = 38.0588' / in.	CHECKED -	REVISED -
	PLOT DATE = 2/17/2017	DATE -	REVISED -

**STATE OF ILLINOIS
DEPARTMENT OF TRANSPORTATION**

**EXISTING LIGHTING PLANS
US 24 - MCCLUGGAGE BRIDGE (WB STRUCTURE)**

SCALE: STA. TO STA.

F.A.P. RTE.	SECTION	COUNTY	TOTAL SHEETS	SHEET NO.
VAR.	D4 TRAFFIC SIGNALS 2017	VARIOUS	23	19
CONTRACT NO. 68D56			ILLINOIS FED. AID PROJECT	



NAVIGATION LIGHTING CONDUITS ATTACHED TO HANDRAIL POSTS ON THE EXISTING TRUSS STRUCTURE IS NECESSARY TO HAVE SMOOTH RADIAL BENTS TO GET BY THE VERTICAL AND DIAGONAL MEMBERS. THIS WORK SHALL BE CONSIDERED INCIDENTAL TO THE CONDUITS AND NO ADDITIONAL PAYMENT WILL BE ALLOWED.

- ◆ EXISTING LIGHT STANDARDS (TO BE REMOVED)
 - PEDESTAL ON BRIDGE CONTRACT
 - PROPOSED BRIDGE LIGHT
 - INDICATES NO. OF CABLE IN CONDUIT
 - HIGHWAY LIGHT SYSTEM
 - NAVIGATION LIGHT SYSTEM (2 CABLES IN CONDUIT)
- SCALE 1" = 50'

FOR INFORMATION ONLY

FILE NAME = 68D56 - Final Plans.dgn	USER NAME = keathbr	DESIGNED -	REVISED -
		DRAWN -	REVISED -
	PLOT SCALE = 38.0588' / in.	CHECKED -	REVISED -
	PLOT DATE = 2/17/2017	DATE -	REVISED -

STATE OF ILLINOIS
DEPARTMENT OF TRANSPORTATION

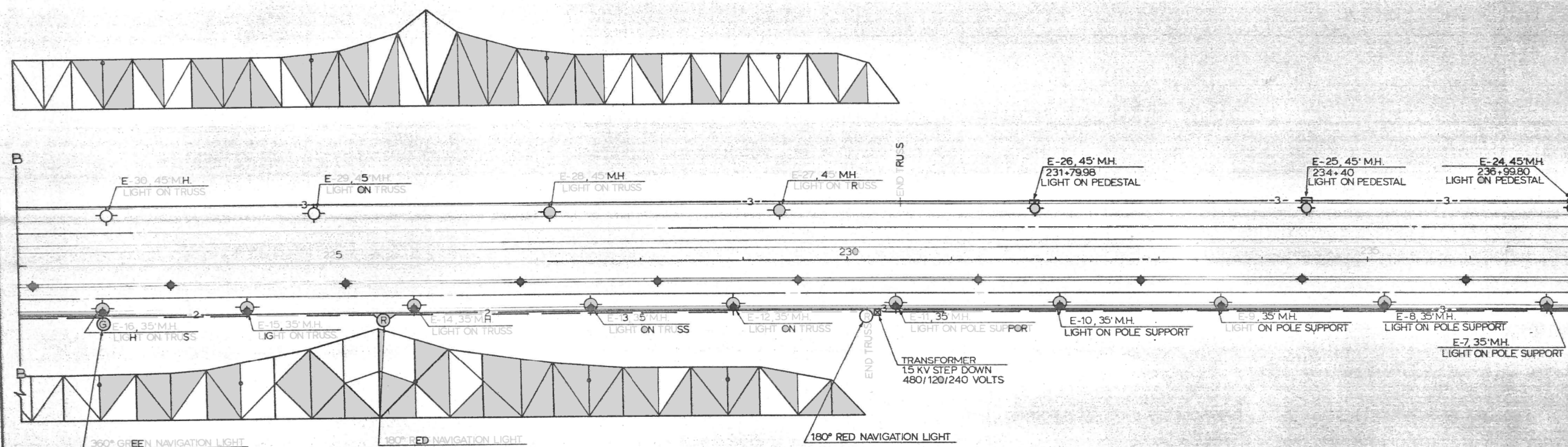
EXISTING LIGHTING PLANS
US 24 - MCCLUGGAGE BRIDGE (WB STRUCTURE)

SCALE: STA. TO STA.

F.A.P. RTE.	SECTION	COUNTY	TOTAL SHEETS	SHEET NO.
VAR.	D4 TRAFFIC SIGNALS 2017	VARIOUS	23	20
CONTRACT NO. 68D56				
ILLINOIS FED. AID PROJECT				

FA. 49	REQ-TAZ	71	15
--------	---------	----	----

POLE, METAL, 35 FT. MH, 4 FT. EXTENSION	= 13 EACH
POLE, METAL 45 FT. MH, 4 FT. EXTENSION	= 22 EACH
LUMINAIRE, RECTILINEAR TYPE: 250 WATT	= 29 EACH
LUMINAIRE, RECTILINEAR TYPE: 150 WATT	= 22 EACH
LAMP 150 WATT HPS	= 22 EACH
LAMP 250 WATT HPS	= 29 EACH
CONTROL INSTALLATION, TYPE CB RCS-60-480	= 2 EACH
ELECTRIC CABLE IN CONDUIT, 600 V(XLP-TYPE USE), 1/C NO. 12	= 4836 LIN. FT.
ELECTRIC CABLE IN CONDUIT, 600 V(XLP-TYPE USE), 1/C NO. 6	= 29919 LIN. FT.
TRENCH AND BACKFILL	= 240 LIN. FT.
CONDUIT ATTACHED TO STRUCTURE 2" DIA. GALV. STEEL	= 9990 LIN. FT.
CONDUIT ATTACHED TO STRUCTURE 3/4" DIA. GALV. STEEL	= 566 LIN. FT.
GALVANIZED CONDUIT IN TRENCH 2"	= 280 LIN. FT.
TRUSS MOUNTED BRACKET ARM 4'	= 16 EACH
STEEL CABLE 1/2 INCH	= 1880 LIN. FT.
REMOVE EXISTING BRIDGE LIGHTING SYSTEM	= 1 L. SUM
POLE SUPPORT	= 13 EACH



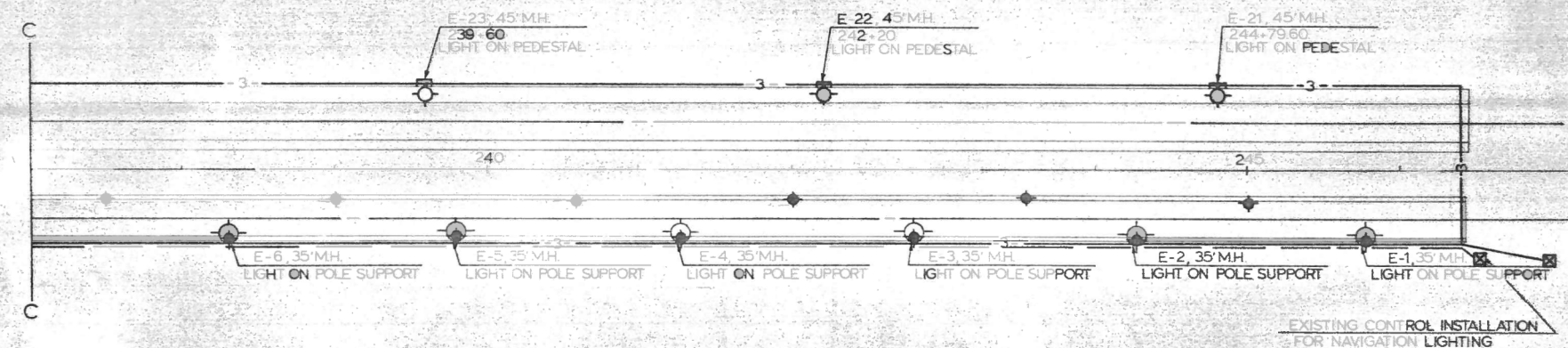
◆ EXISTING LIGHT STANDARDS (TO BE REMOVED)
 □ PEDESTAL ON BRIDGE CONTRACT
 ○ PROPOSED BRIDGE LIGHT
 - INDICATES NO. OF CABLE IN CONDUIT
 - HIGHWAY LIGHT SYSTEM
 - NAVIGATION LIGHT SYSTEM (2 CABLES IN CONDUIT)

SCALE 1" = 50'

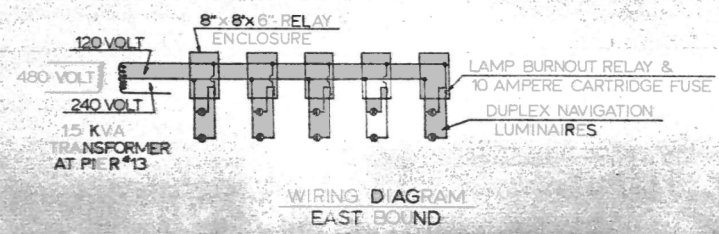
FOR INFORMATION ONLY

FILE NAME = 68D56 - Final Plans.dgn	USER NAME = keathbr	DESIGNED -	REVISED -	STATE OF ILLINOIS DEPARTMENT OF TRANSPORTATION	EXISTING LIGHTING PLANS US 24 - MCCLUGGAGE BRIDGE (WB STRUCTURE)	F.A.P. RTE.	SECTION	COUNTY	TOTAL SHEETS	SHEET NO.	
	PLOT SCALE = 38.0568' / in.	DRAWN -	REVISED -			VAR.	D4 TRAFFIC SIGNALS 2017	VARIOUS	23	21	
	PLOT DATE = 2/17/2017	CHECKED -	REVISED -			CONTRACT NO. 68D56					
		DATE -	REVISED -			ILLINOIS FED. AID PROJECT					

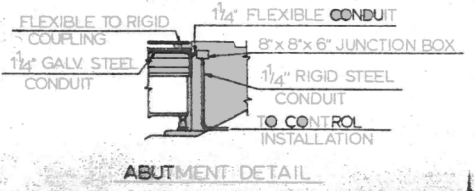
PROJECT NO.	SEC.	COUNTY	TOTAL SHEETS	SHEET NO.
FA 49	68056	PEO.-TAZ.	71	6
FED. ROAD DIST. NO.	ILLINOIS PROJECT			



NAVIGATION LIGHTING SYSTEM



WIRING DIAGRAM EAST BOUND



ABUTMENT DETAIL

NAVIGATION LIGHTING SYSTEM - 1 LUMP SUM
 CONDUIT ATTACHED TO STRUCTURE 1 1/4" DIA. GALV STEEL = 3100 LIN. FT.
 ELECTRIC CABLE IN CONDUIT 600V (XLP-TYPE USE) 1/2" O.D. = 6250 LIN. FT.
 GALVANIZED CONDUIT IN TRENCH 1 1/4" = 20 LIN. FT.
 TRENCH AND BACKFILL = 10 LIN. FT.

- ◆ EXISTING LIGHT STANDARDS (TO BE REMOVED)
- ▣ PEDESTAL ON BRIDGE CONTRACT
- PROPOSED BRIDGE LIGHT
- NAVIGATION LIGHT SYSTEM (2 CABLES IN CONDUIT)
- INDICATES NO. OF CABLE IN CONDUIT
- HIGHWAY LIGHT SYSTEM

SCALE 1" = 50'

FOR INFORMATION ONLY

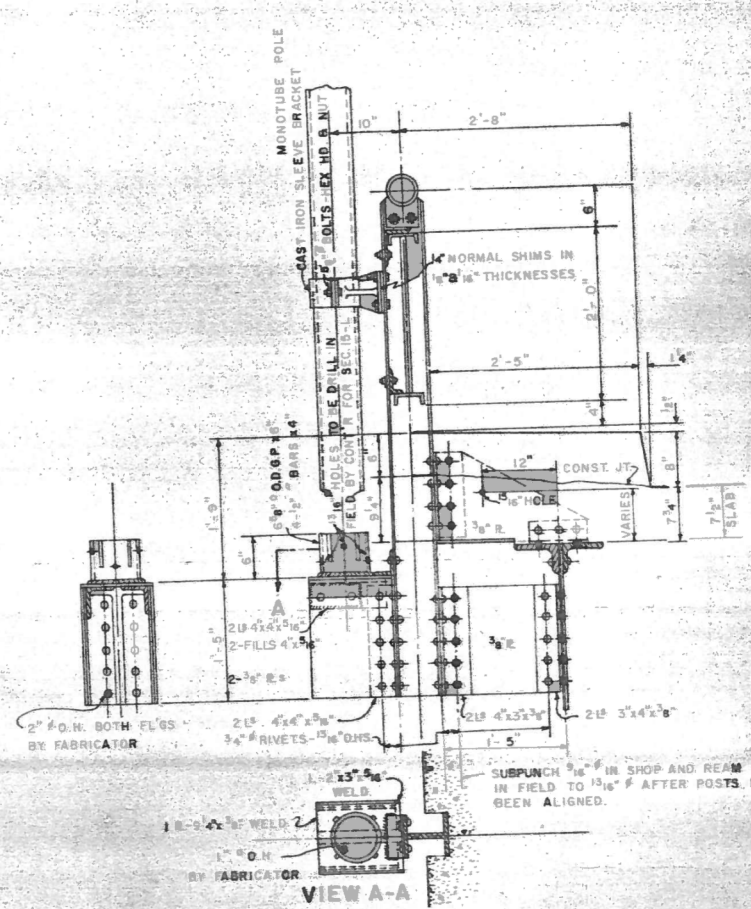
FILE NAME = 68056 - Final Plans.dgn	USER NAME = keathbr	DESIGNED -	REVISED -
		DRAWN -	REVISED -
	PLOT SCALE = 38.0568' / in.	CHECKED -	REVISED -
	PLOT DATE = 2/17/2017	DATE -	REVISED -

STATE OF ILLINOIS
 DEPARTMENT OF TRANSPORTATION

EXISTING LIGHTING PLANS
 US 24 - MCCLUGGAGE BRIDGE (WB STRUCTURE)
 SCALE: STA. TO STA.

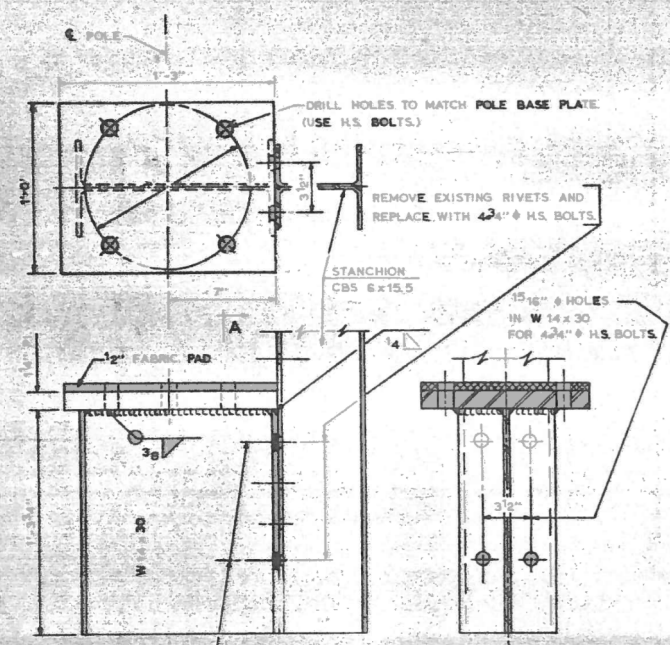
F.A.P. RTE.	SECTION	COUNTY	TOTAL SHEETS	SHEET NO.
VAR.	D4 TRAFFIC SIGNALS 2017	VARIOUS	23	22
			CONTRACT NO. 68056	
ILLINOIS FED. AID PROJECT				

CONTROL #1
60 AMP 240/480 VOLT

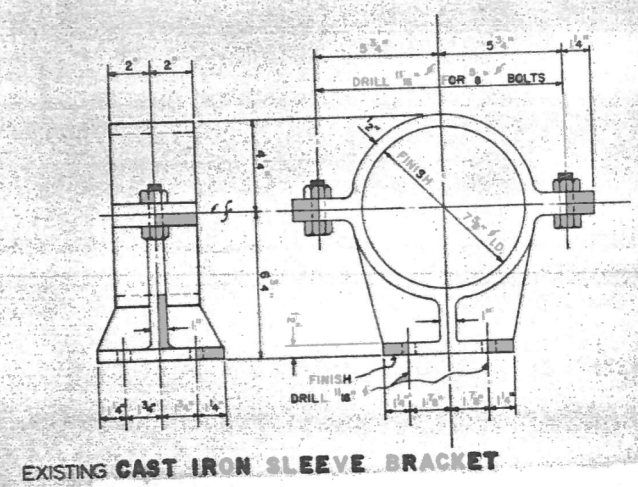
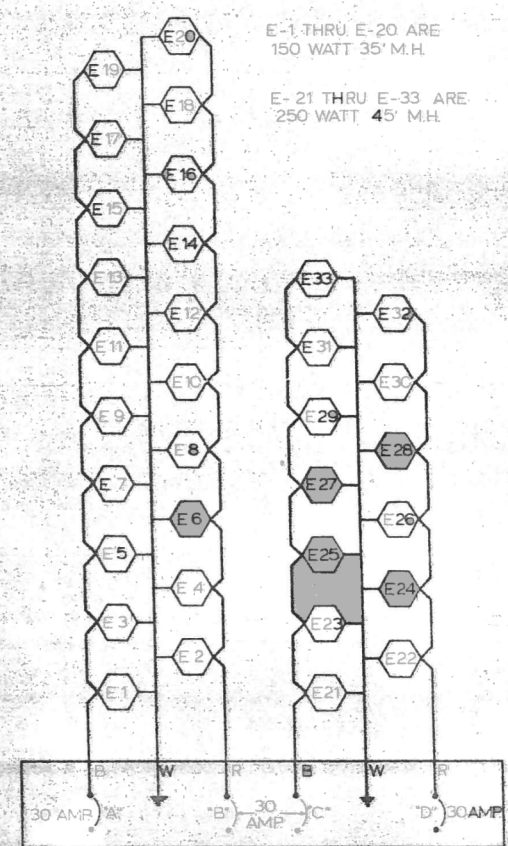


EXISTING LIGHT POLE SUPPORT

NOTE: USE FABRIC PADS AROUND THE ALUMINUM POLE AT THE EXISTING CAST IRON SLEEVE BRACKET.



NEW POLE SUPPORT

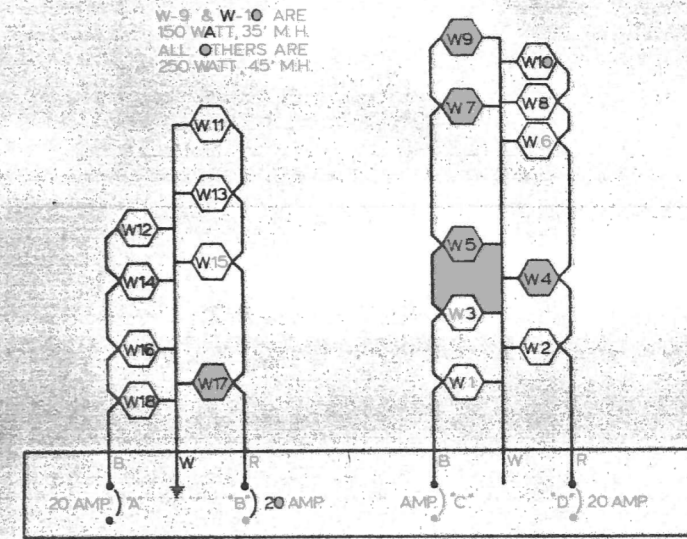


EXISTING CAST IRON SLEEVE BRACKET

NOTE: Painting of the steel lighting pole, cast iron sleeve brackets, and the pole supports shall be incidental to the contract and no additional payment will be allow.

FOR INFORMATION ONLY

CONTROL #2
60 AMP 240/480 VOLT



LIGHTING DETAILS