

STATE OF ILLINOIS
DEPARTMENT OF TRANSPORTATION

F.A.S. RTE.	SECTION	COUNTY	TOTAL SHEETS	SHEET NO.
2709	D7 PAVT PRSV 2017-2	JASPER	5	1
		ILLINOIS	CONTRACT NO. 74793	

FOR INDEX OF SHEETS, SEE SHEET NO. 2

ADT = 950

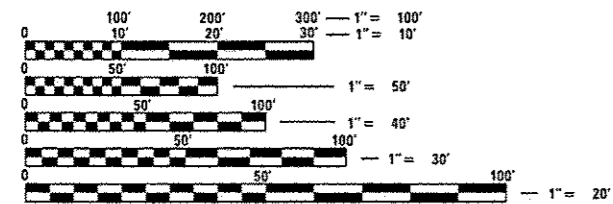
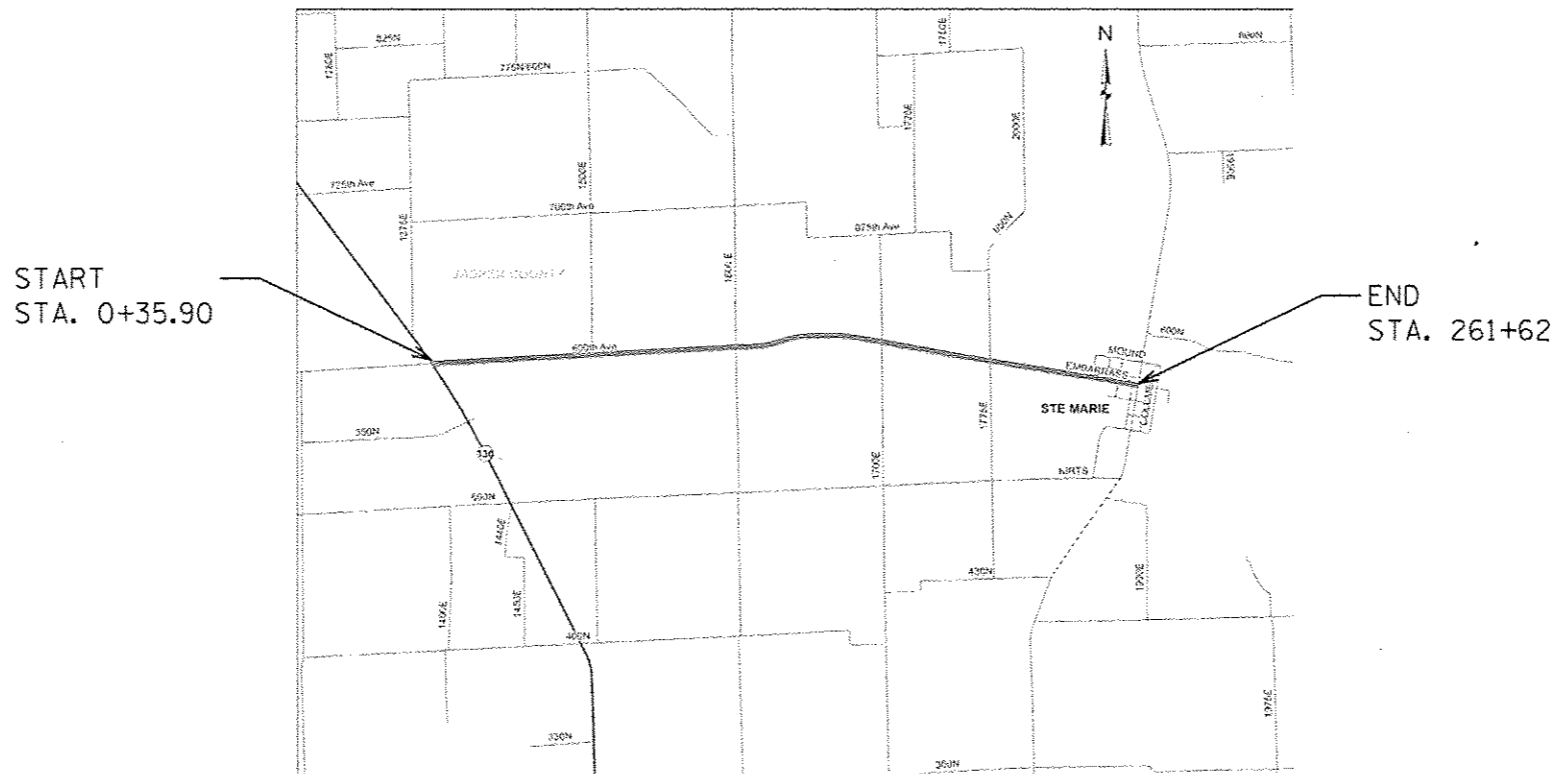
PROPOSED HIGHWAY PLANS

FAS ROUTE 2709 (STE. MARIE SPUR)
SECTION D7 PAVT PRSV 2017-2

A-2 BITUMINOUS SURFACE TREATMENT
JASPER COUNTY

C-97-023-17

D-97-014-17



FULL SIZE PLANS HAVE BEEN PREPARED USING STANDARD ENGINEERING SCALES. REDUCED SIZED PLANS WILL NOT CONFORM TO STANDARD SCALES. IN MAKING MEASUREMENTS ON REDUCED PLANS, THE ABOVE SCALES MAY BE USED.

J.U.L.I.E.
JOINT UTILITY LOCATION INFORMATION FOR EXCAVATION
1-800-892-0123
OR 811

PROJECT ENGINEER TOM RONAN
PROJECT MANAGER KALEB KNIERIM

GROSS LENGTH = 26115 FT. = 4.94 MILE
NET LENGTH = 26115 FT. = 4.94 MILE

CONTRACT NO. 74793

STATE OF ILLINOIS
DEPARTMENT OF TRANSPORTATION

SUBMITTED January 25, 2017
Jeffrey M. South
REGIONAL ENGINEER

Mar 24, 2017
Mawneen M. Addis, P.E.
ENGINEER OF DESIGN AND ENVIRONMENT

Mar 24, 2017
Maureen M. Addis
DIRECTOR OF PROGRAM DEVELOPMENT

PRINTED BY THE AUTHORITY
OF THE STATE OF ILLINOIS

INDEX OF SHEETS

SHEET NO.	DESCRIPTION
1	TITLE SHEET
2	INDEX OF SHEETS, HIGHWAY STANDARDS, & GENERAL NOTES
3	SUMMARY OF QUANTITIES
4	SCHEDULE OF QUANTITIES
5	LOCATION MAP

THE FOLLOWING STANDARDS ARE A PART OF THESE PLANS AND ARE INCLUDED FOLLOWING SHEET NUMBER 5:

701001-02	OFF ROAD, 2L 2W, 15' MINIMUM FROM EDGE OF PAVEMENT, FOR SPEEDS >= 45 MPH
701006-05	OFF ROAD, 2L 2W, 15' AWAY TO EDGE OF PAVEMENT, FOR SPEEDS >= 45 MPH
701011-04	OFF ROAD, 2L, 2W, MOVING OPERATIONS DAY ONLY, FOR SPEEDS >= 45 MPH
701201-04	LANE CLOSURE, 2L, 2W, DAY ONLY, FOR SPEEDS >= 45 MPH
701301-04	LANE CLOSURE, 2L, 2W, SHORT TIME OPERATIONS
701306-03	LANE CLOSURE, 2L, 2W, SLOW MOVING OPERATIONS DAY ONLY, FOR SPEEDS >= 45 MPH
701901-06	TRAFFIC CONTROL DEVICES

GENERAL NOTES

THIS SECTION SHALL BE CONSTRUCTED IN ACCORDANCE WITH THE PLANS; THE "STANDARD SPECIFICATIONS FOR ROAD AND BRIDGE CONSTRUCTION" ADOPTED APRIL 1, 2016; THE "SUPPLEMENTAL SPECIFICATIONS AND RECURRING SPECIAL PROVISIONS" INDICATED ON THE CHECK SHEET, AND "THE SPECIAL PROVISIONS" INCLUDED IN THE PROPOSAL.

THE PROPOSED WORK IS LOCATED ON STE. MARIE SPUR STARTING AT IL 130 AND EXTENDING 4.94 MILES EAST TO N. MAIN ST. IN STE. MARIE IN JASPER COUNTY.

THE WORK IN THIS SECTION CONSISTS OF POTHOLE PATCHING, CONSTRUCTION OF SEAL COAT FOR BITUMINOUS SURFACE TREATMENT CLASS A-2, PAVEMENT MARKING, AND ANY OTHER WORK NECESSARY TO COMPLETE THIS SECTION PER THE STANDARD SPECIFICATIONS. AN ESTIMATED QUANTITY OF HOT-MIX-ASPHALT FOR PATCHING POTHOLES (COLD MIX) HAS BEEN INCLUDED FOR ANY NECESSARY POTHOLE PATCHING. THE QUANTITY AND LOCATIONS OF POTHOLE PATCHING WILL BE DETERMINED BY THE RESIDENT IN THE FIELD.

THE MATERIAL USED FOR SEAL COAT AGGREGATE SHALL BE CA-16 CRUSHED STONE.

THE QUANTITY FOR PAINT PAVEMENT MARKING LINE 4" CONSISTS OF 103,038 FEET OF WHITE AND 26,070 FEET OF YELLOW. THE PAINT PAVEMENT MARKING IS TO BE COMPLETED TWO TIMES. THE APPLICATIONS SHALL BE COMPLETED 30 DAYS APART. THE QUANTITY FOR SHORT-TERM PAVEMENT MARKING CONSISTS OF 5,223 FEET.

SHORT-TERM PAVEMENT MARKING SHALL BE APPLIED AFTER COMPLETION OF THE COVER COAT AND AFTER COMPLETION OF THE SEAL COAT. SHORT-TERM PAVEMENT MARKING SHALL BE PAINT AND CONSIST OF 4' LONG CENTERLINE SKIP DASHES EVERY 40'. THE FINAL PERMANENT PAVEMENT MARKING SHALL BE APPLIED DIRECTLY OVER THE SHORT-TERM PAVEMENT MARKING.

RAISED REFLECTIVE PAVEMENT MARKERS AND SURVEY MONUMENT VAULTS SHALL BE KEPT FREE OF THE BITUMINOUS SURFACE TREATMENT. SURVEY MONUMENT VAULTS SHALL BE PROTECTED BY COVERING THEM WITH A MINIMUM OF 8" X 8" OF TAPE. THE REFLECTOR LENS OF THE EXISTING RAISED REFLECTIVE PAVEMENT MARKERS SHALL BE PROTECTED BY COVERING THEM WITH A MINIMUM OF 3" X 4" OF TAPE. IT IS THE INTENT OF THE DEPARTMENT THAT THE REMAINING PORTION OF THE RAISED REFLECTIVE PAVEMENT MARKER CASTING NOT COVERED BY TAPE SHALL BE COATED WITH THE BITUMINOUS SURFACE TREATMENT IN ORDER TO HELP SEAL THE RAISED REFLECTIVE PAVEMENT MARKER IN PLACE. THE COST TO COVER AND REMOVE THE TAPE FROM THE RAISED REFLECTIVE PAVEMENT MARKERS AND SURVEY MONUMENT VAULTS WILL BE INCLUDED IN THE COST OF THE CONTRACT.

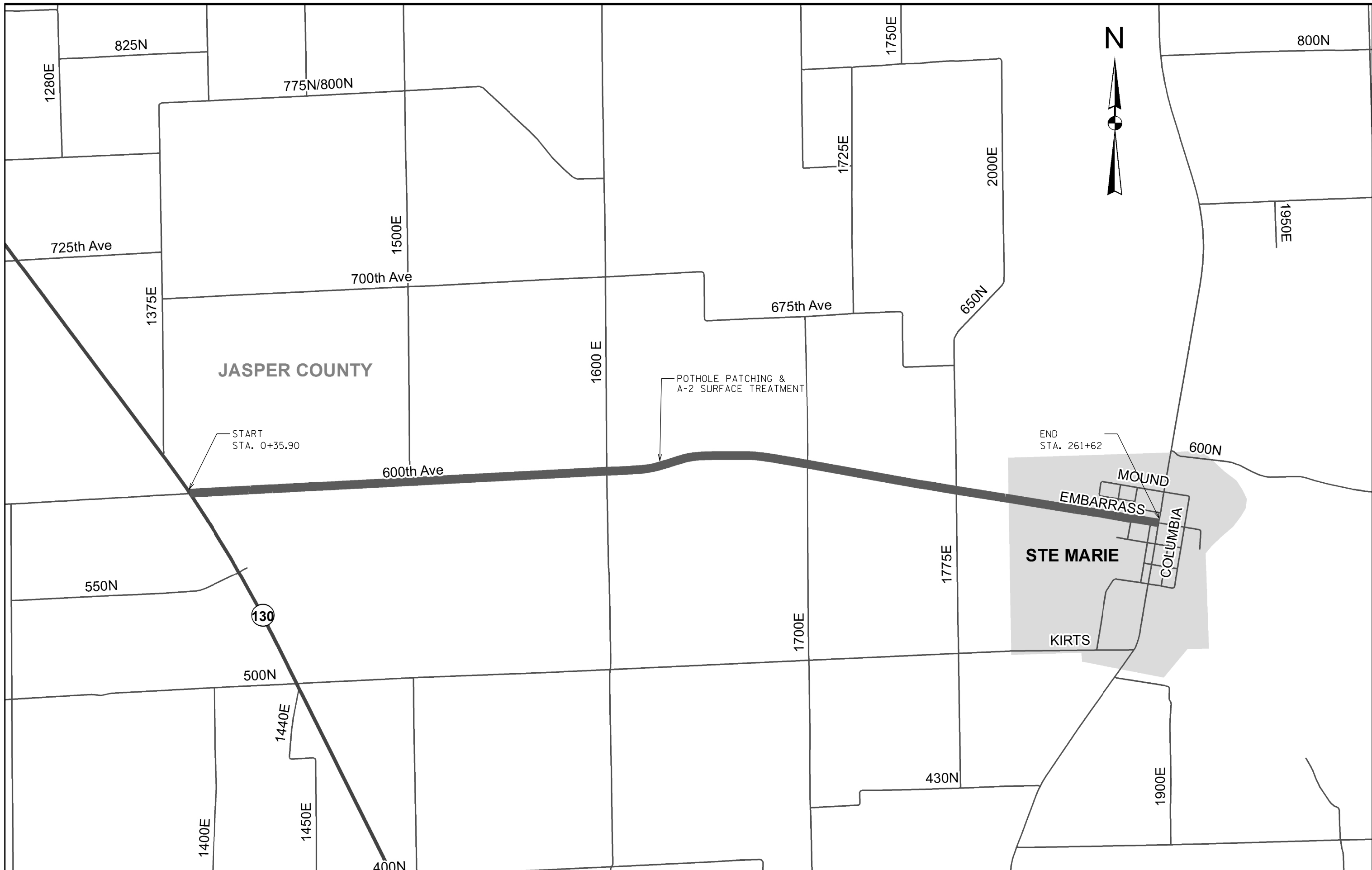
REQUIRED RATES OF APPLICATION:

BITUMINOUS MATERIALS (COVER & SEAL COAT)	0.32 POUNDS / SQ. FT.
SEAL COAT AGGREGATE	25 LBS. / SQ. YD.
COVER COAT AGGREGATE	25 LBS. / SQ. YD.

FILE NAME =	USER NAME = steffenmk	DESIGNED -	REVISED -	STATE OF ILLINOIS DEPARTMENT OF TRANSPORTATION	INDEX OF SHEETS AND GENERAL NOTES		F.A.S. RTE.	SECTION	COUNTY	TOTAL SHEETS	SHEET NO.
p:\IL\084EBIDINTEG\illinois.gov\PWIDOT\Documents\IDOT Offices\District 7\Projects\74793\Drawings\CAD\Sheets\0774793-sht-gennotes.dwg	3-DRAWN	CHECKED -	REVISED -				2709	D7 PAVT PRSV 2017-2	JASPER	5	2
Default	PLOT SCALE = 100.0000' / in.	DATE -	REVISED -				CONTRACT NO. 74793				
	PLOT DATE = 2/8/2017	DATE -	REVISED -				SCALE:	SHEET 1	OF 1	SHEETS	STA.

SCHEDULE OF QUANTITIES

Station to Station	Length	Pavement Width	Area	Bituminous Materials (Cover and Seal Coats)	Cover Coat Aggregate	Seal Coat Aggregate
	Feet	Feet	SQ FT	Ton	Ton	Ton
STA 0+26.9 to STA 0+56.4	29.5	89.9	2652.1	0.8	3.68	3.68
STA 0+56.4 to STA 1+21.4	65.0	44.0	2860.0	0.9	3.97	3.97
STA 1+21.4 to STA 21+54.2	2032.8	24.0	48787.2	15.6	67.76	67.76
STA 21+54.2 to STA 22+55.3	101.1	24.0	2426.4	0.8	3.37	3.37
STA 22+55.3 to STA 69+01.6	4646.3	24.0	111511.2	35.7	154.88	154.88
STA 69+01.6 to STA 120+01.6	5100.1	24.0	122401.7	39.2	170.00	170.00
STA 120+01.6 to STA 127+06.5	704.9	24.0	16917.6	5.4	23.50	23.50
STA 127+06.5(BK) = STA 127+10.2(AH)		Station Equation				
STA 127+10.2 to STA 138+55.1	1144.9	24.0	27477.6	8.8	38.16	38.16
STA 138+55.1(BK) = STA 138+59.8(AH)		Station Equation				
STA 138+59.8 to STA 158+20.2	1960.4	24.0	47049.6	15.1	65.35	65.35
STA 158+20.2(BK) = STA 158+23.5(AH)		Station Equation				
STA 158+23.5 to STA 166+51.6	828.1	24.0	19874.4	6.4	27.60	27.60
STA 166+51.6 to STA 230+01.6	6350.0	24.0	152400	48.8	211.67	211.67
STA 230+01.6 to STA 261+12.2	3110.6	24.0	74654.4	23.9	103.69	103.69
STA 261+12.2 to STA 261+41.7	29.5	24.0	708.0	0.2	0.98	0.98
TOTALS	26103.2		629720.1	201.5	874.6	874.6



FILE NAME = p:\11\084EBIDINTEG.illinois.gov\PWIDOT\Documents\DOT Offices\District 7\Projects\74793\Drawings\CAD\Sheets\0774793-sht-plan.dgn
 USER NAME = steffennk
 DESIGNED -
 PLOT SCALE = 100.0000' / in.
 CHECKED -
 PLOT DATE = 2/8/2017
 DATE -

REVISIONS
 REVISED -
 REVISED -
 REVISED -
 REVISED -

**STATE OF ILLINOIS
 DEPARTMENT OF TRANSPORTATION**

LOCATION MAPS
 SCALE: SHEET 1 OF 1 SHEETS STA. TO STA.

F.A.S. RTE.	SECTION	COUNTY	TOTAL SHEETS	SHEET NO.
2709	D7 PAVT PRSV 2017-2	JASPER	5	5
CONTRACT NO. 74793				
ILLINOIS FED. AID PROJECT				