

CODE NO.	ITEM	UNIT	TOTAL QUANTITY	CONSTRUCTION CODE	
				100% STATE ✓	
				URBAN ✓	0014 ✓
20200100	EARTH EXCAVATION	CU YD	385	385	
21101615	TOPSOIL FURNISH AND PLACE. 4"	50 YD	148	148	
25000210	SEEDING, CLASS 2A	ACRE	0.11	0.11	
25000400	NITROGEN FERTILIZER NUTRIENT	POUND	11	11	
25000500	PHOSPHORUS FERTILIZER NUTRIENT	POUND	11	11	
25000600	POTASSIUM FERTILIZER NUTRIENT	POUND	11	11	
50102400	CONCRETE REMOVAL	CU YD	45	45	
50200100	STRUCTURE EXCAVATION	CU YD	94	94	
50300225	CONCRETE STRUCTURES	CU YD	47.7	47.7	
50300300	PROTECTIVE COAT	50 YD	94	94	
50800205	REINFORCEMENT BARS, EPOXY COATED	POUND	8670	8670	
52200020	TEMPORARY SOIL RETENTION SYSTEM	50 FT	785	785	
550A0450	STORM SEWERS, CLASS A, TYPE 2 36"	FOOT	8	8	
55101600	STORM SEWER REMOVAL 36"	FOOT	8	8	

• SPECIALTY ITEMS

CODE NO.	ITEM	UNIT	TOTAL QUANTITY	CONSTRUCTION CODE	
				100% STATE	
				URBAN	0014
59100100	GEOCOMPOSITE WALL DRAIN	50 YD	75	75	
* 66900200	NON SPECIAL WASTE DISPOSAL	CU YD	100	100	
67000400	ENGINEER'S FIELD OFFICE, TYPE A	CAL MO	1	1	
* 66900450	SPECIAL WASTE PLANS AND REPORTS	LSUM	1	1	
67100100	MOBILIZATION	LSUM	1	1	
* 66900530	SOIL DISPOSAL ANALYSIS	EACH	1	1	
70102620	TRAFFIC CONTROL AND PROTECTION, STANDARD 701501	LSUM	1	1	
70300240	TEMPORARY PAVEMENT MARKING - LINE 6"	FOOT	102	102	
70400100	TEMPORARY CONCRETE BARRIER	FOOT	102	102	
70600250	IMPACT ATTENUATORS, TEMPORARY (NON-REDIRECTIVE), TEST LEVEL 3	EACH	1	1	
78200011	BARRIER WALL REFLECTORS, TYPE C	EACH	10	10	
* 81028240	UNDERGROUND CONDUIT, GALVANIZED STEEL 4" DIA.	FOOT	20	20	
* X1400233	UNIT DUCT, 600V, 4-1C NO. 2, 1/C NO. 4 GROUND. (XLP-TYPE USE). 2" DIA. POLYETHYLENE	FOOT	950	950	
* 81800190	AERIAL CABLE, 2-1/C NO. 2 WITH MESSENGER WIRE	FOOT	1200	1200	
* 81800300	AERIAL CABLE, 3-1/C NO. 2 WITH MESSENGER WIRE	FOOT	1200	1200	
* X1400234	LIGHT POLE, WOOD, 50 FOOT, CLASS 4	EACH	1	1	

A
A
12



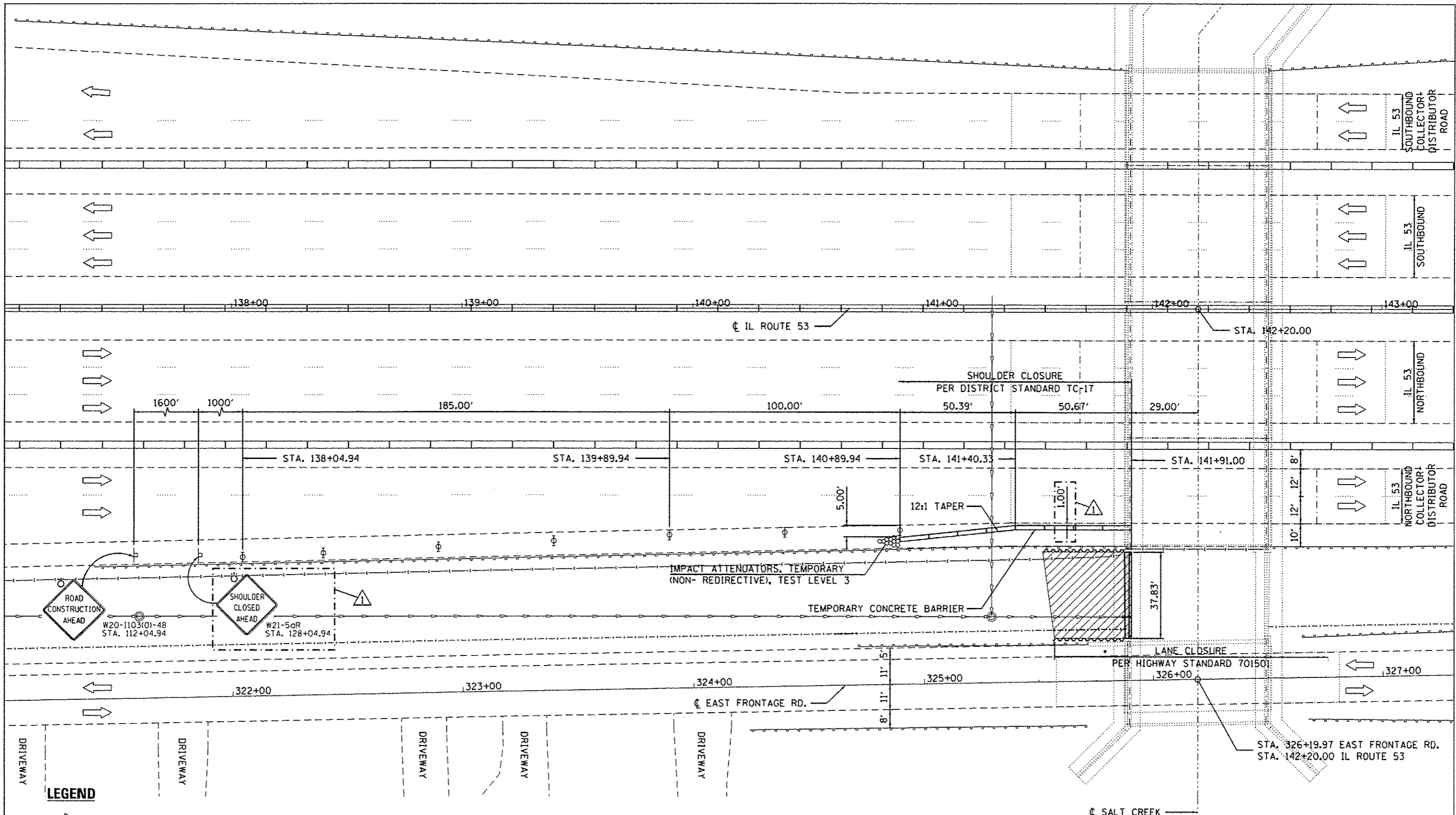
USER NAME - Kan.dobant	DESIGNED - KJD, RTB	REVISED -
	DRAWN - KJD	REVISED -
PLOT SCALE - 4000.0000 1" = 100'	CHECKED - RTB, JMG	REVISED -
PLOT DATE - 2/16/2017	DATE - 02/01/2017	REVISED -

STATE OF ILLINOIS
DEPARTMENT OF TRANSPORTATION

SUMMARY OF QUANTITIES
IL 53 OVER SALT CREEK

F.A.P. RTE. 342	SECTION 2016-0551	COUNTY COOK	TOTAL SHEETS 21	SHEET NO. 3
SCALE: SHEET 1 OF 2 SHEETS STA. TO STA.			CONTRACT NO. 62037	
[ILLINOIS] FED. AID PROJECT				

A Revised sheet 4-18-17 Rev



PLAN



LEGEND

- TRAFFIC DIRECTION
- WORK AREA
- IMPACT ATTENUATORS, TEMPORARY (NON- REDIRECTIVE), TEST LEVEL 3
- TEMPORARY CONCRETE BARRIER
- SIGN
- DRUMS AT 50' CTS
- EXIST. STORM SEWER
- EXIST. FENCE
- CHAIN LINK FENCE TO BE REMOVED AND RE-ERECTED
- EXIST. GUARDRAIL

NOTE:
STATIONING MEASURED ALONG ϕ IL ROUTE 53



USER NAME = Kerudrabant	DESIGNED - KJD, RTB	REVISED - Δ 4/13/2017
	DRAWN - KJD	REVISED -
PLLOT SCALE = 4000.0000 1" = 100'	CHECKED - RTB, JMG	REVISED -
PLLOT DATE = 4/13/2017	DATE - 03/20/2017	REVISED -

STATE OF ILLINOIS
DEPARTMENT OF TRANSPORTATION

MAINTENANCE OF TRAFFIC
IL 53 OVER SALT CREEK

SCALE: SHEET 1 OF 1 SHEETS STA. TO STA.

F.A.P. RTE.	SECTION	COUNTY	TOTAL SHEETS	SHEET NO.
342	2016-0551	COOK	21	5
CONTRACT NO. 62D37				

Δ Revised Sheet 4-18-17