

STATE OF ILLINOIS
DEPARTMENT OF TRANSPORTATION

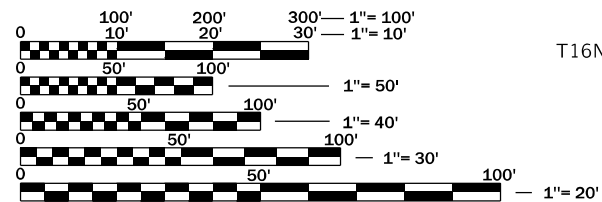
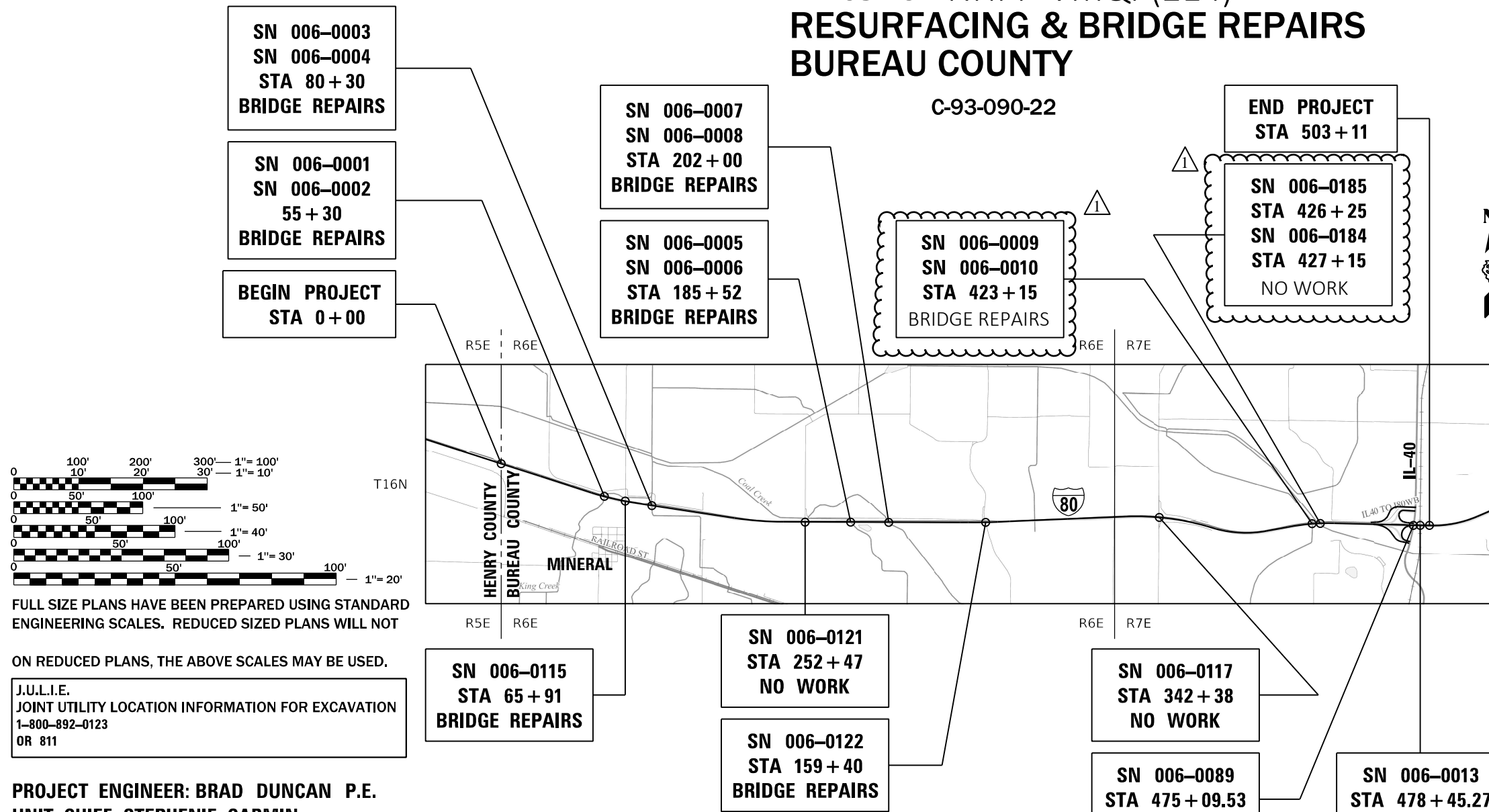
F.A.I. RTE.	SECTION	COUNTY	TOTAL SHEETS	SHEET NO.
80	(06-1,06-2)RS-4, BRR	BUREAU	208	1
		ILLINOIS	CONTRACT NO. 66J65	

FOR INDEX OF SHEETS, SEE SHEET NO. 3

PROPOSED HIGHWAY PLANS

FAI 80 (I-80)
SECTION (06-1,06-2)RS-4, BRR
PROJECT NHPP-VMQP(214)
RESURFACING & BRIDGE REPAIRS
BUREAU COUNTY

C-93-090-22

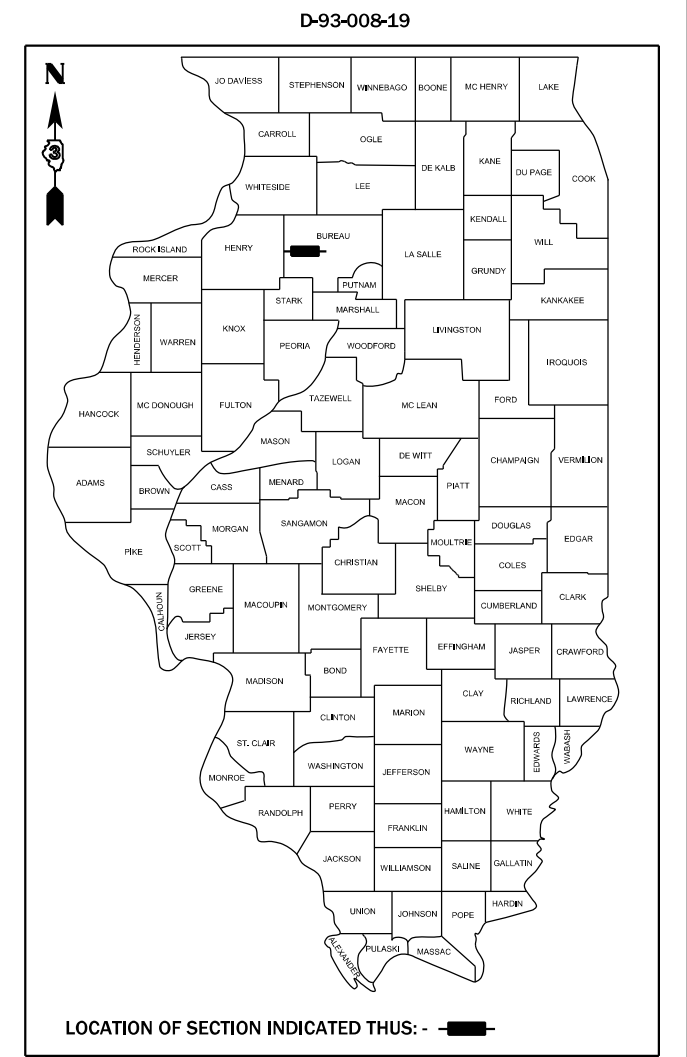


FULL SIZE PLANS HAVE BEEN PREPARED USING STANDARD ENGINEERING SCALES. REDUCED SIZED PLANS WILL NOT ON REDUCED PLANS, THE ABOVE SCALES MAY BE USED.

J.U.L.I.E.
JOINT UTILITY LOCATION INFORMATION FOR EXCAVATION
1-800-892-0123
OR 811

PROJECT ENGINEER: BRAD DUNCAN P.E.
UNIT CHIEF: STEPHENIE CARMIN
DISTRICT 3 NO. (815) 434-6131
CONTRACT NO. 66J65

GROSS LENGTH = 50,311 FT. = 9.529 MILES
NET LENGTH = 49,232 FT. = 9.324 MILE



LOCATION OF SECTION INDICATED THIS: - [black rectangle] -

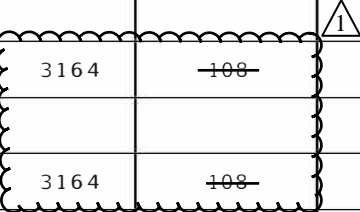
FUNCTIONAL CLASSIFICATION
INTERSTATE
2022 ADT = 17200
PV = 45.93% SU = 6.1% MU = 45.97%

STATE OF ILLINOIS
DEPARTMENT OF TRANSPORTATION
SUBMITTED February 2, 2023
James A. Alford REGIONAL ENGINEER
March 24, 2023
Scott A. Etk ENGINEER OF DESIGN AND ENVIRONMENT
March 24, 2023
Steph M. Smith DIRECTOR OF HIGHWAYS PROJECT IMPLEMENTATION

PRINTED BY THE AUTHORITY
OF THE STATE OF ILLINOIS

CONSTRUCTION CODE								
NHPP 90Fed/10St	NHPP 90Fed/10St	NHPP 90Fed/10St	NHPP 90Fed/10St	NHPP 90Fed/10St	NHPP 90Fed/10St	NHPP 90Fed/10St	NHPP 90Fed/10St	NHPP 90Fed/10St
ROADWAY	BRIDGE	BRIDGE	BRIDGE	BRIDGE	BRIDGE	BRIDGE	BRIDGE	BRIDGE
0005	0047	0047	0047	0047	0047	0047	0047	0047
RURAL	S.N. 006-0001/2	S.N. 006-0115	S.N. 006-0003/4	S.N. 006-0122	S.N. 006-0005/6	S.N. 006-0007/8	S.N. 006-0009/10	

CODE NO.	ITEM	UNIT	TOTAL QUANTITY							
X7010216	TRAFFIC CONTROL AND PROTECTION, (SPECIAL)	L SUM	1	1						
X7010239	CHANGEABLE MESSAGE SIGN, SPECIAL	CAL WK	360	360						
X7011800	TRAFFIC CONTROL AND PROTECTION, STANDARD BLR 21	L SUM	1	1						
X7030030	WET REFLECTIVE TEMPORARY TAPE TYPE III, 4 INCH	FOOT	30480	30480						
X7040650	REMOVE TEMPORARY CONCRETE BARRIER	FOOT	102300	102300						
X7240207	REMOVE EXISTING SIGN COMPLETE	EACH	1	1						
X8410102	TEMPORARY LIGHTING SYSTEM	L SUM	1	1						
X8570002	SMART TRAFFIC MONITORING SYSTEM	CAL WK	90	90						
X8570004	SMART TRAFFIC MONITORING DEVICE	CAL WK	900	900						
Z0000300	ADJUST ROCKER AND SOLE PLATE	EACH	14							14
Z0001800	APPROACH SLAB REPAIR (PARTIAL DEPTH)	SQ YD	4		2		1			1
Z0005216	HOT-MIX ASPHALT STABILIZATION 6" AT STEEL PLATE BEAM GUARD RAIL	SQ YD	4114	4114						
Z0006014	BRIDGE DECK LATEX CONCRETE OVERLAY, 2 1/2 INCHES	SQ YD	3164	108				1456	1708	
Z0012130	BRIDGE DECK SCARIFICATION 3/4"	SQ YD	3164	108				1456	1708	



MODEL: Default
 FILE NAME: P:\Illinois\Bentley.com\PROJECTS\Documents\DOT_Offices\District_3\Projects\36665\CADD\Drawings\36665-2k-500.dgn

USER NAME = Rachel.Dudley	DESIGNED -	REVISED -
PLOT SCALE = 100.0000' / in.	DRAWN -	REVISED -
PLOT DATE = 2/2/2023	CHECKED -	REVISED -
	DATE -	REVISED -

**STATE OF ILLINOIS
DEPARTMENT OF TRANSPORTATION**

SUMMARY OF QUANTITIES

SCALE: SHEET OF SHEETS STA. TO STA.

F.A.I. RTE.	SECTION	COUNTY	TOTAL SHEETS	SHEET NO.
80	(06-1,06-2)RS-4, BRR	BUREAU	208	19
			CONTRACT NO. 66J65	
ILLINOIS FED. AID PROJECT				



CONSTRUCTION CODE

CODE NO.	ITEM	UNIT	TOTAL QUANTITY	NHPP	NHPP	NHPP	NHPP	NHPP	NHPP	NHPP	NHPP	
				90Fed/105t	90Fed/10St	90Fed/10St	90Fed/10St	90Fed/10St	90Fed/10St	90Fed/10St	90Fed/10St	90Fed/10St
				ROADWAY	BRIDGE	BRIDGE	BRIDGE	BRIDGE	BRIDGE	BRIDGE	BRIDGE	BRIDGE
				0005	0047	0047	0047	0047	0047	0047	0047	
				RURAL	S.N. 006-0001/2	S.N. 006-0115	S.N. 006-0003/4	S.N. 006-0122	S.N. 006-0005/6	S.N. 006-0007/8	S.N. 006-0009/10	
20012754	STRUCTURAL REPAIR OF CONCRETE (DEPTH EQUAL TO OR LESS THAN 5 INCHES)	SQ FT	10.2	3	6						1.2	
20013798	CONSTRUCTION LAYOUT	LSUM	1	1								
20015802	PLUG EXISTING DECK DRAINS	EACH	68			44		24				
20016001	DECK SLAB REPAIR (FULL DEPTH, TYPE)	SQ YD	4			2		2				
20016200	DECK SLAB REPAIR (PARTIAL)	SQ YD	561		1	184	1	374			1	
20021904	SILICONE JOINT SEALER, 1'	FOOT	181							181		
20029090	DIAMOND GRINDING (BRIDGE SECTION)	SQ YD	2976						1365	1611		
20034105	MATERIAL TRANSFER DEVICE	TON	110620	110620								
20041895	POLYMER CONCRETE	CJ FT	19							19		
20048665	RAILROAD PROTECTIVE LIABILITY INSURANCE	LSUM	1	1								
20049790	RELOCATING NAME PLATES	EACH	2							2		
20058668	GRADING AND SHAPING FORESLOPES	SQ YD	1295	1295								
20065700	SLOPE WALL REPAIR	SQ YD	647		116	56	231	10	139		95	
20076600	TRAINEES	HOUR	2,000	2,000								
20065730	SLOPE WALL SLURRY PUMPING	CUYD	288.8		46.6	27	135.1	2	46.5		31.6	
20076604	TRAINEES - TRAINING PROGRAM GRADUATE	HOUR	2,000	2,000								
20065740	SLOTTED DRAIN 12' WITH VARIABLE SLOT	FOOT	210	210								



Ø 0042

MODEL: Default
 FILE NAME: P:\Illinois\Bentley.com\PROJECTS\Documents\DOT_Offices\District_3\Projects\2023\66J65\CADD\Drawings\2023\66J65-200.dgn

USER NAME = Rachel.Dudley	DESIGNED -	REV(SED) -
DRAWN -	REV(SED) -	
PLOT SCALE = 100.0000 "/in.	CHECKED -	REV(SED) -
PLOT DATE = 2/2/2023	DATE -	REV(SED) -

STATE OF ILLINOIS
DEPARTMENT OF TRANSPORTATION

SUMMARY OF QUANTITIES

SCALE: SHEET OF SHEETS! STA. TO STA.

F A L	SECTION	COUNTY	TOTAL SHEETS	SHEET NO.
RTE. I	(06-1,06-2)RS-4, BRR	BUREAU	20s	20
ILLINOIS FED. AID PROJECT			CONTRACT NO 66J65	