

SUMMARY OF QUANTITIES

CODE NO.	ITEM	UNIT	TOTAL QUANTITY	CONSTRUCTION CODE			
				80% FEDERAL 10% STATE 10% VILLAGE	80% FEDERAL 10% STATE 10% VILLAGE	80% FEDERAL 10% STATE 10% VILLAGE	100% VILLAGE
				ROADWAY	TRAFFIC SIGNALS	INTERCONNECT	TRAFFIC SIGNALS
				0028 URBAN	0028 URBAN	0028 URBAN	0021 URBAN
#* 66901003	REGULATED SUBSTANCES FINAL CONSTRUCTION REPORT	L SUM	1	1			
#* 66901006	REGULATED SUBSTANCES MONITORING	CAL DA	5	5			
67100100	MOBILIZATION	L SUM	1	1			
70102620	TRAFFIC CONTROL AND PROTECTION, STANDARD 701501	L SUM	1	1			
70102625	TRAFFIC CONTROL AND PROTECTION, STANDARD 701606	L SUM	1	1			
70102630	TRAFFIC CONTROL AND PROTECTION, STANDARD 701601	L SUM	1	1			
70102635	TRAFFIC CONTROL AND PROTECTION, STANDARD 701701	L SUM	1	1			
70102640	TRAFFIC CONTROL AND PROTECTION, STANDARD 701801	L SUM	1	1			
70107025	CHANGEABLE MESSAGE SIGN	CAL DA	248	248			
72400500	RELOCATE SIGN PANEL ASSEMBLY - TYPE A	EACH	2	2			
72400710	RELOCATE SIGN PANEL - TYPE 1	SQ FT	34	34			
72800100	TELESCOPING STEEL SIGN SUPPORT	FOOT	12	12			
81028200	UNDERGROUND CONDUIT, GALVANIZED STEEL, 2" DIA.	FOOT	780		780		
81028220	UNDERGROUND CONDUIT, GALVANIZED STEEL, 3" DIA.	FOOT	75		75		
81028240	UNDERGROUND CONDUIT, GALVANIZED STEEL, 4" DIA.	FOOT	433		433		

* SPECIALTY ITEM
SPECIAL PROVISION

STATE OF ILLINOIS - PROFESSIONAL DESIGN FIRM
 LICENSE NO. - 184-001121 - EXPIRES 4/30/2024
 gfoley Default
 4/12/2023 8:49:41 AM
 FILE NAME: P:\GLV\212221\Milwaukee Zenith\CAD\Sheets_Phase 2\212221_PH2_SHT-500_01.dgn
 FILE NAME: P:\GLV\212221\Milwaukee Zenith\CAD\Sheets_Phase 2\212221_PH2_SHT-500_01.dgn



USER NAME = gfoley	DESIGNED - GJF	REVISED - 04-11-2023
	DRAWN - KAR	REVISED -
PLOT SCALE = 40.0000' / in.	CHECKED - JBT	REVISED -
PLOT DATE = 4/12/2023	DATE - 02-15-2023	FILE - 212221_PH2_SHT-500_01.dgn

STATE OF ILLINOIS
DEPARTMENT OF TRANSPORTATION

SCALE:		SHEET 3 OF 8 SHEETS		STA.	TO STA.
--------	--	---------------------	--	------	---------

SUMMARY OF QUANTITIES

F.A.P. RTE.	SECTION	COUNTY	TOTAL SHEETS	SHEET NO.
374	21-00203-00-TL	COOK	44	5
CONTRACT NO.			61139	
ILLINOIS FED. AID PROJECT				

SUMMARY OF QUANTITIES

CODE NO.	ITEM	UNIT	TOTAL QUANTITY	CONSTRUCTION CODE			
				80% FEDERAL 10% STATE 10% VILLAGE	80% FEDERAL 10% STATE 10% VILLAGE	80% FEDERAL 10% STATE 10% VILLAGE	100% VILLAGE
				ROADWAY 0028 URBAN	TRAFFIC SIGNALS 0028 URBAN	INTERCONNECT 0028 URBAN	TRAFFIC SIGNALS 0021 URBAN
# 81400100	HANDHOLE	EACH	4		4		
81400200	HEAVY-DUTY HANDHOLE	EACH	2		2		
81400300	DOUBLE HANDHOLE	EACH	2		2		
# 85000200	MAINTENANCE OF EXISTING TRAFFIC SIGNAL INSTALLATION	EACH	1			1	
# 85100500	PAINT NEW TRAFFIC SIGNAL POST	EACH	3				3
# 85100600	PAINT NEW MAST ARM AND POLE, UNDER 40 FOOT	EACH	2				2
# 85100701	PAINT NEW MAST ARM AND POLE, 40 FOOT AND OVER	EACH	1				1
86400100	TRANSCIEVER - FIBER OPTIC	EACH	1			1	
# 87300925	ELECTRIC CABLE IN CONDUIT, TRACER, NO. 14 1C	FOOT	2,083			2,083	
# 87301215	ELECTRIC CABLE IN CONDUIT, SIGNAL NO. 14 2C	FOOT	1,251		1,251		
# 87301225	ELECTRIC CABLE IN CONDUIT, SIGNAL NO. 14 3C	FOOT	1,849		1,849		
# 87301245	ELECTRIC CABLE IN CONDUIT, SIGNAL NO. 14 5C	FOOT	1,811		1,811		
# 87301255	ELECTRIC CABLE IN CONDUIT, SIGNAL NO. 14 7C	FOOT	1,528		1,528		⚠
# 87301305	ELECTRIC CABLE IN CONDUIT, LEAD-IN, NO. 14 1 PAIR	FOOT	2,047		2,047		
# 87301805	ELECTRIC CABLE IN CONDUIT, SERVICE, NO. 6 2 C	FOOT	167		167		

* SPECIALTY ITEM
SPECIAL PROVISION

STATE OF ILLINOIS - PROFESSIONAL DESIGN FIRM
 LICENSE NO. - 184-001121 - EXPIRES 4/30/2024
 gfoley Default
 4/12/2023 10:26:43 AM
 FILE NAME: P:\GLV\212221\Milwaukee Zenith\CAD\Sheets_Phase 2\212221_PH2_SHT-500_01.dgn



USER NAME = gfoley	DESIGNED - GJF	REVISED - 04-11-2023
	DRAWN - KAR	REVISED -
PLOT SCALE = 40.0000' / in.	CHECKED - JBT	REVISED -
PLOT DATE = 4/12/2023	DATE - 02-15-2023	FILE - 212221_PH2_SHT-500_01.dgn

STATE OF ILLINOIS
DEPARTMENT OF TRANSPORTATION

SUMMARY OF QUANTITIES	
SCALE:	SHEET 4 OF 8 SHEETS STA. TO STA.

F.A.P. RTE.	SECTION	COUNTY	TOTAL SHEETS	SHEET NO.
374	21-00203-00-TL	COOK	44	6
CONTRACT NO.			61J39	
ILLINOIS FED. AID PROJECT				

SUMMARY OF QUANTITIES

CODE NO.	ITEM	UNIT	TOTAL QUANTITY	CONSTRUCTION CODE			
				80% FEDERAL 10% STATE 10% VILLAGE	80% FEDERAL 10% STATE 10% VILLAGE	80% FEDERAL 10% STATE 10% VILLAGE	100% VILLAGE
				ROADWAY	TRAFFIC SIGNALS	INTERCONNECT	TRAFFIC SIGNALS
				0028 URBAN	0028 URBAN	0028 URBAN	0021 URBAN
# 87301900	ELECTRIC CABLE IN CONDUIT, EQUIPMENT GROUNDING CONDUCTOR, NO. 6 1C	FOOT	875		875	△	
# 87800100	CONCRETE FOUNDATION, TYPE A	FOOT	16		16		
# 87800150	CONCRETE FOUNDATION, TYPE C	FOOT	4		4		
# 87800400	CONCRETE FOUNDATION, TYPE E 30-INCH DIAMETER	FOOT	14		14		
# 87800415	CONCRETE FOUNDATION, TYPE E 36-INCH DIAMETER	FOOT	38		38		
87900200	DRILL EXISTING HANDHOLE	EACH	2		2		
# 88030020	SIGNAL HEAD, LED, 1-FACE, 3-SECTION, MAST-ARM MOUNTED	EACH	6		6		
# 88030050	SIGNAL HEAD, LED, 1-FACE, 3-SECTION, BRACKET MOUNTED	EACH	4		4	△	
# 88030100	SIGNAL HEAD, LED, 1-FACE, 5-SECTION, BRACKET MOUNTED	EACH	2		2		
# 88030110	SIGNAL HEAD, LED, 1-FACE, 5-SECTION, MAST-ARM MOUNTED	EACH	6		6	△	
# 88102717	PEDESTRIAN SIGNAL HEAD, LED, 1-FACE, BRACKET MOUNTED WITH COUNTDOWN TIMER	EACH	8		8		
# 88200410	TRAFFIC SIGNAL BACKPLATE, LOUVERED, FORMED PLASTIC	EACH	12		12	△	
88500100	INDUCTIVE LOOP DETECTOR	EACH	6		6		
# 88600100	DETECTOR LOOP, TYPE I	FOOT	346		346		
# 88700200	LIGHT DETECTOR	EACH	2				2

* SPECIALTY ITEM
SPECIAL PROVISION

STATE OF ILLINOIS - PROFESSIONAL DESIGN FIRM
 LICENSE NO. - 184-001121 - EXPIRES 4/30/2024
 gfoley Default 4/12/2023 9:49:52 AM
 FILE NAME: P:\GLV\212221\Milwaukee Zenith\CAD\Sheets_Phase 2\212221_PH2_SHT-SOQ_01.dgn



USER NAME = gfoley	DESIGNED - GJF	REVISED - △ 04-11-2023
PLOT SCALE = 40.0000' / in.	DRAWN - KAR	REVISED -
PLOT DATE = 4/12/2023	CHECKED - JBT	REVISED -
	DATE - 02-15-2023	FILE - 212221_PH2_SHT-SOQ_01.dgn

STATE OF ILLINOIS
DEPARTMENT OF TRANSPORTATION

SCALE:		SHEET 5 OF 8 SHEETS		STA.	TO STA.
--------	--	---------------------	--	------	---------

SUMMARY OF QUANTITIES

F.A.P. RTE.	SECTION	COUNTY	TOTAL SHEETS	SHEET NO.
374	21-00203-00-TL	COOK	44	7
CONTRACT NO.			61J39	
ILLINOIS FED. AID PROJECT				

SUMMARY OF QUANTITIES

CODE NO.	ITEM	UNIT	TOTAL QUANTITY	CONSTRUCTION CODE			
				80% FEDERAL 10% STATE 10% VILLAGE	80% FEDERAL 10% STATE 10% VILLAGE	80% FEDERAL 10% STATE 10% VILLAGE	100% VILLAGE
				ROADWAY	TRAFFIC SIGNALS	INTERCONNECT	TRAFFIC SIGNALS
				0028 URBAN	0028 URBAN	0028 URBAN	0021 URBAN
# X1400388	VIDEO VEHICLE DETECTION SYSTEM, SINGLE APPROACH	EACH	2		2		
# X1400424	ELECTRIC CABLE IN CONDUIT, STREET NAME SIGN, NO. 14 3C, TYPE SOOW	FOOT	754				754
# X2130010	EXPLORATION TRENCH (SPECIAL)	FOOT	20		20		
# X4240800	DETECTABLE WARNINGS (SPECIAL)	SQ FT	94	94			
# X6030310	FRAMES AND LIDS TO BE ADJUSTED (SPECIAL)	EACH	1	1			
# X8510502	PAINT NEW MAST ARM ASSEMBLY AND POLE WITH DUAL MAST ARMS, 1-UNDER 40 FEET, 1-OVER 40 FEET	EACH	1				1
# X8620200	UNINTERRUPTABLE POWER SUPPLY, SPECIAL	EACH	1		1		
# X8710024	FIBER OPTIC CABLE IN CONDUIT, NO. 62.5/125, MM12F SM24E	FOOT	2,083			2,083	
# 87100020	FIBER OPTIC CABLE IN CONDUIT, NO. 62.5/125, MM12F SM12F	FOOT	2,083			2,083	
# X8752700	TRAFFIC SIGNAL POST, ALUMINUM 16 FT. (SPECIAL)	EACH	3				3
# X8760200	ACCESSIBLE PEDESTRIAN SIGNALS	EACH	8		8		
# X8771210	STEEL MAST ARM ASSEMBLY AND POLE, 34 FT. (SPECIAL)	EACH	2		2		
# X8771250	STEEL MAST ARM ASSEMBLY AND POLE, 42 FT. (SPECIAL)	EACH	1		1		
# XX009572	STEEL MAST ARM ASSEMBLY AND POLE WITH DUAL MAST ARMS, 44 FT. AND 34 FT. (SPECIAL)	EACH	1		1		
# Z0007430	TEMPORARY SIDEWALK	SQ FT	60	60			
# Z0013798	CONSTRUCTION LAYOUT	L SUM	1	1			

* SPECIALTY ITEM
SPECIAL PROVISION

STATE OF ILLINOIS - PROFESSIONAL DESIGN FIRM
 LICENSE NO. - 184-001121 - EXPIRES 4/30/2024
 gfoley Default 4/12/2023 10:26:48 AM
 FILE NAME: P:\GLV\212221\Milwaukee Zenith\CAD\Sheets_Phase 2\212221_PH2_SHT-SOQ_01.dgn



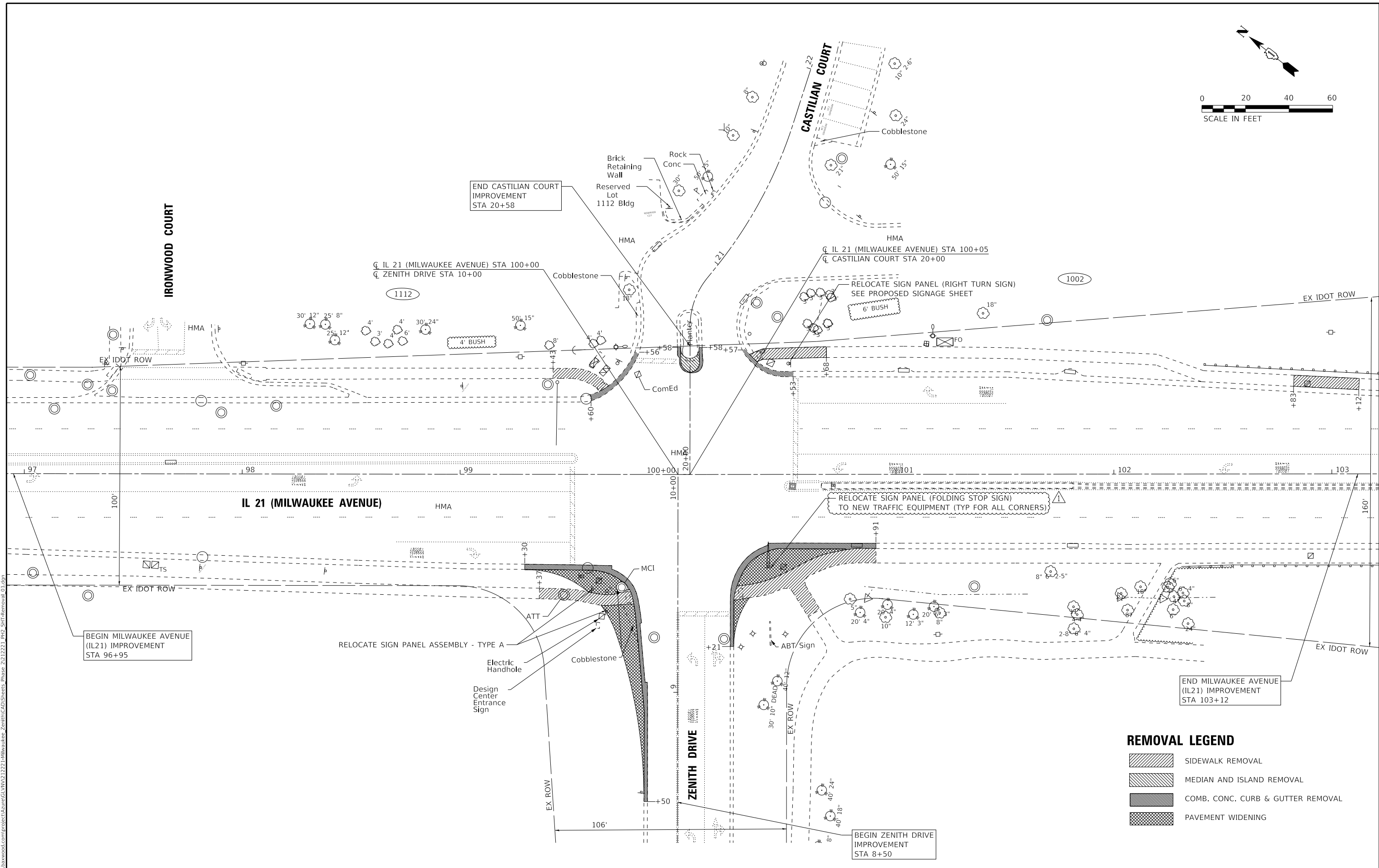
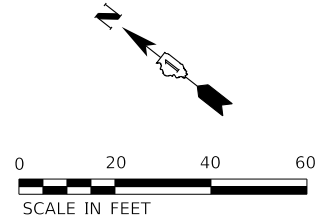
USER NAME = gfoley	DESIGNED - GJF	REVISED - 04-11-2023
PLOT SCALE = 40.0000' / in.	DRAWN - KAR	REVISED -
PLOT DATE = 4/12/2023	CHECKED - JBT	REVISED -
	DATE - 02-15-2023	FILE - 212221_PH2_SHT-SOQ_01.dgn

STATE OF ILLINOIS
DEPARTMENT OF TRANSPORTATION

SCALE:		SHEET 7 OF 8 SHEETS		STA.	TO STA.
--------	--	---------------------	--	------	---------

SUMMARY OF QUANTITIES

F.A.P. RTE.	SECTION	COUNTY	TOTAL SHEETS	SHEET NO.
374	21-00203-00-TL	COOK	44	9
CONTRACT NO.			61J39	
ILLINOIS FED. AID PROJECT				



REMOVAL LEGEND

- SIDEWALK REMOVAL
- MEDIAN AND ISLAND REMOVAL
- COMB. CONC. CURB & GUTTER REMOVAL
- PAVEMENT WIDENING

STATE OF ILLINOIS - PROFESSIONAL DESIGN FIRM
 LICENSE NO. - 184-001121 - EXPIRES 4/30/2024
 gfoley
 FILE NAME: \\corp.baxwood.com\project\azure\GLVNV212221-Milwaukee_Zenith\CAD\Sheets_Phase 2\212221_P2_SHT-Removal_01.dgn



USER NAME = gfoley	DESIGNED - GJF	REVISED - 04-11-2023
PLOT SCALE = 20.0000' / in.	DRAWN - KAR	REVISID -
PLOT DATE = 4/12/2023	CHECKED - JBT	REVISID -
	DATE - 02-15-2023	FILE - 212221_P2_SHT-Removal_01.dgn

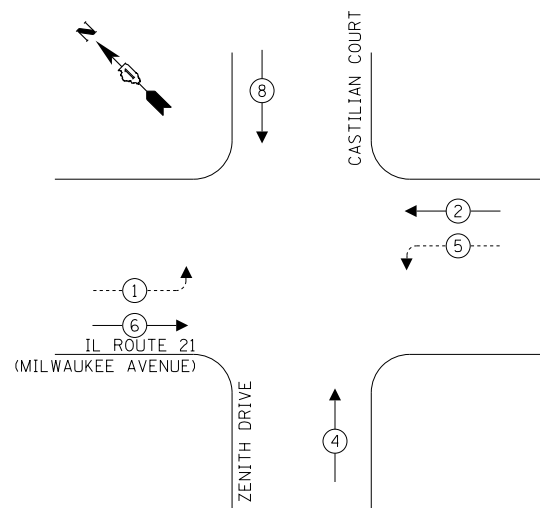
STATE OF ILLINOIS
 DEPARTMENT OF TRANSPORTATION

REMOVAL PLAN
MILWAUKEE AVENUE & ZENITH DRIVE

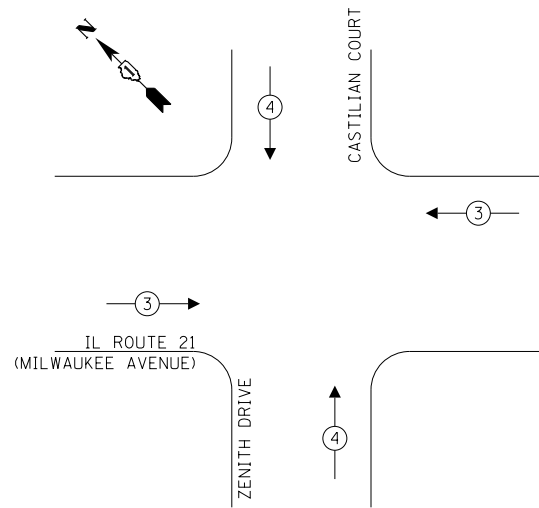
SCALE: 1" = 20' SHEET 1 OF 1 SHEETS STA. TO STA.

F.A.P. RTE.	SECTION	COUNTY	TOTAL SHEETS	SHEET NO.
374	21-00203-00-TL	COOK	44	15
CONTRACT NO. 61J39			ILLINOIS FED. AID PROJECT	

PROPOSED CONTROLLER SEQUENCE



**PROPOSED EMERGENCY VEHICLE
PREEMPTION SEQUENCE**



LEGEND:

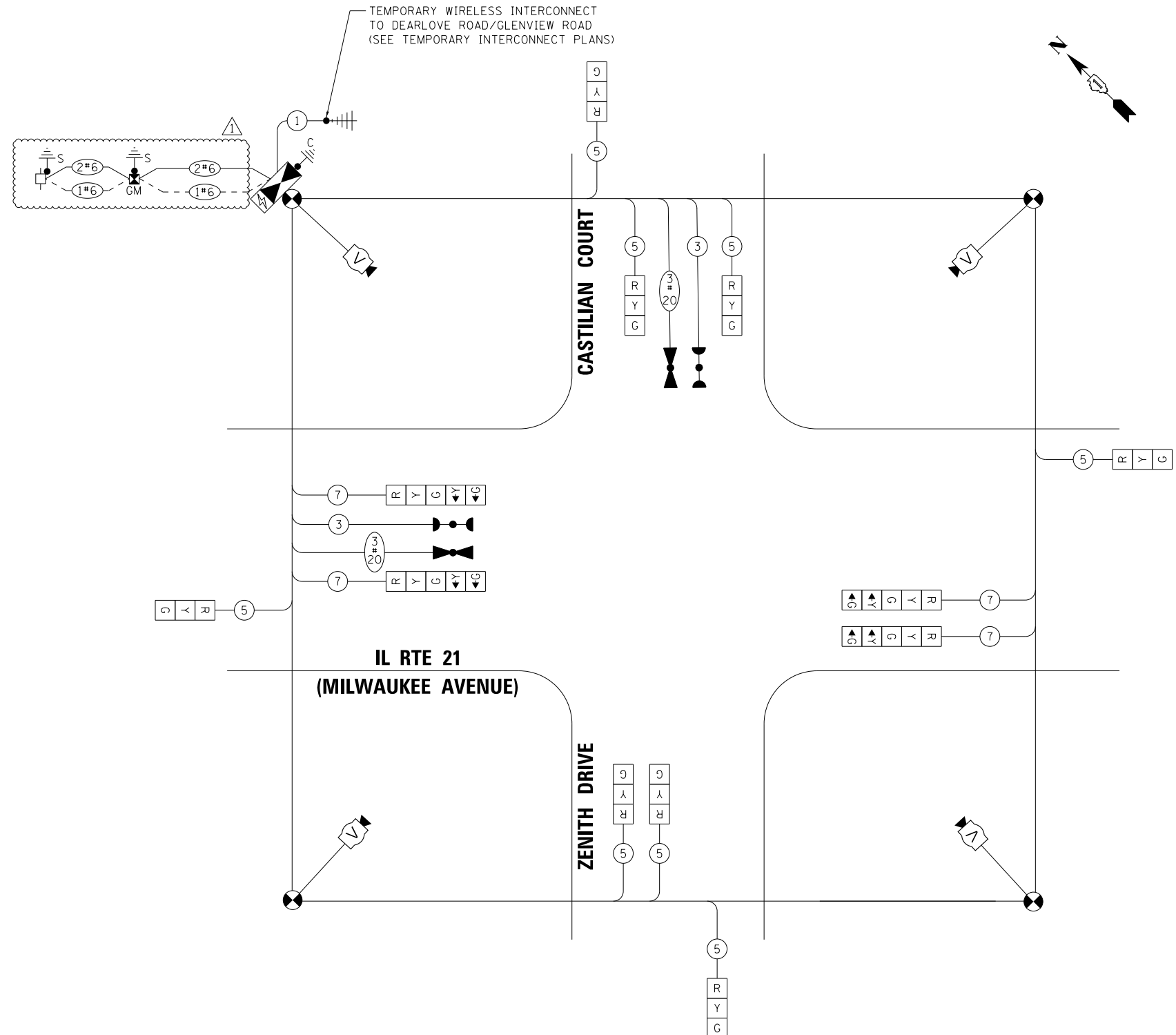
- ← ⊛ → PROTECTED PHASE
- ← ⊛ ··· ⊛ → PROTECTED/PERMITTED PHASE
- ← ⊛ ⊛ → PEDESTRIAN PHASE
- ⊛ OL OVERLAP

**TRAFFIC SIGNAL
ELECTRICAL SERVICE REQUIREMENTS**

TYPE	QUANTITY	UNIT WATTAGE	TOTAL WATTAGE
SIGNAL HEAD			
3 - SECTION	8	11	88
4 - SECTION	0	14	0
5 - SECTION	4	13	52
PROGRAMMABLE SIGNALS			
3 - SECTION	0	22	0
4 - SECTION	0	32	0
5 - SECTION	0	28	0
PED. SIGNAL	0	15	0
CONTROLLER	1	150	150
MASTER CONTROLLER	0	100	0
UPS	1	25	25
DETECTION			
RADAR	0	20	0
VIDEO	4	20	80
BLANK-OUT SIGN	0	25	0
NETWORK SWITCH II OR III	0	35	0
CELLULAR MODEM	0	15	0
TOTAL UPS SIZING			395
UPS CHARGING	1	225	225
BATTERY HEATER MAT	1	180	180
CABINET HEATER	1	200	200
FLASHER	0	15	0
LED STREET NAME SIGN	0	120	0
LUMINAIRE	0	240	0
TOTAL SERVICE WIRE SIZING			1000

ENERGY COSTS TO:
ILLINOIS DEPARTMENT OF TRANSPORTATION
201 WEST CENTER COURT
SCHAUMBURG, IL 60196-1096
ENERGY SUPPLY CONTACT TERRI BLACK
PHONE: 847-816-5239
COMPANY: COMMONWEALTH EDISION
ACCOUNT NUMBER: ---

TS SHEET NO.11



USER NAME = gfoley
DESIGNED - GJF
DRAWN - KAR
PLOT SCALE = 20.0000 "/in.
PLOT DATE = 4/12/2023

REVISED - 04-11-2023
REVISED -
CHECKED - JBT
DATE - 02-15-2023
FILE - 212221_PH2_SHT-TS-Temp Cable Plan_01.dgn

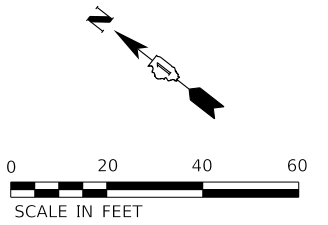
STATE OF ILLINOIS
DEPARTMENT OF TRANSPORTATION

**TEMPORARY CABLE PLAN, TEMPORARY PHASE DESIGNATION DIAGRAM,
AND TEMPORARY EMERGENCY VEHICLE PREEMPTION SEQUENCE
MILWAUKEE AVENUE (IL 21) AT ZENITH DR / CASTILIAN CT**

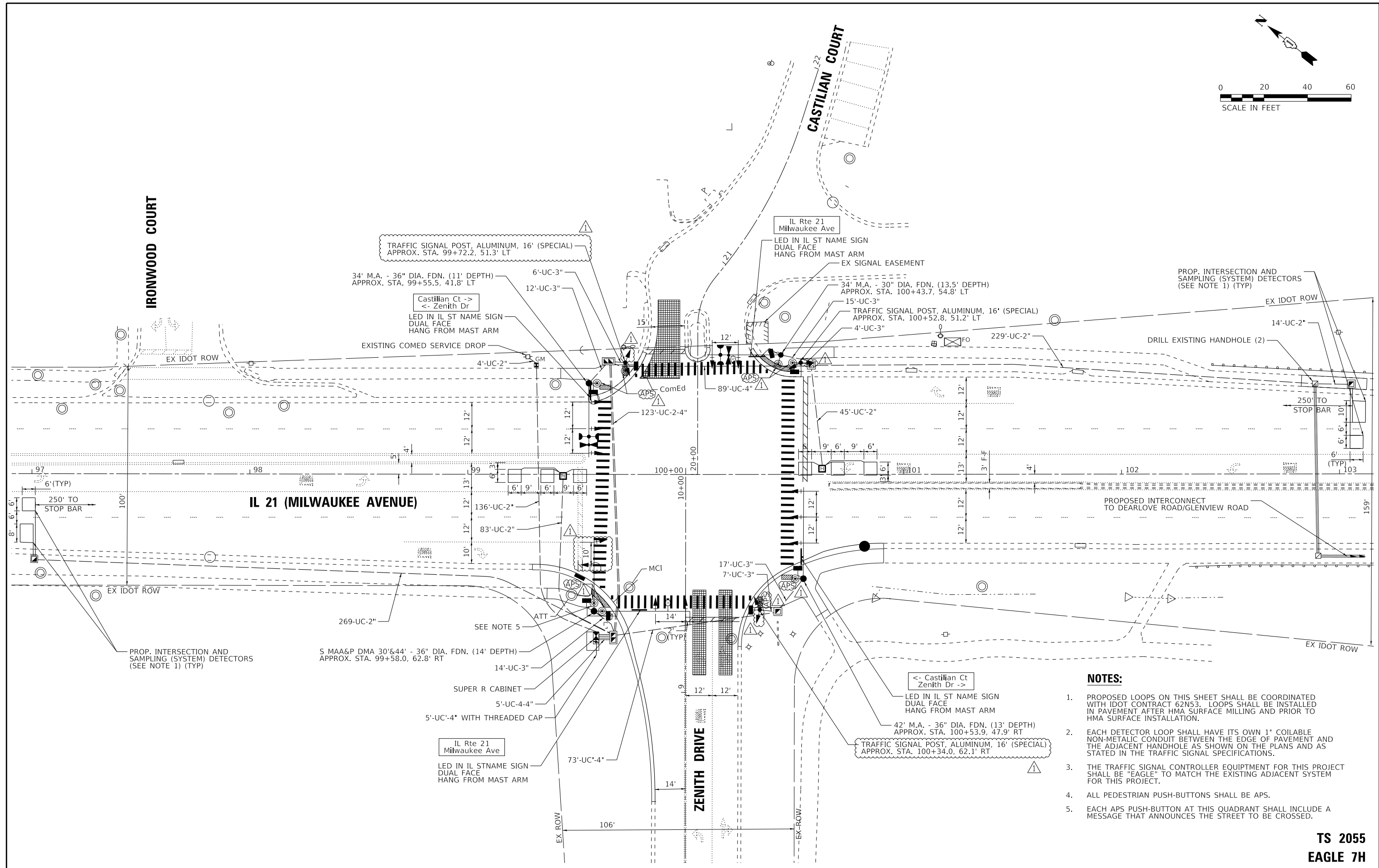
SCALE: NTS SHEET 1 OF 1 SHEETS STA. TO STA.

F.A.P. RTE.	SECTION	COUNTY	TOTAL SHEETS	SHEET NO.
374	21-00203-00-TL	COOK	44	29
CONTRACT NO. 61J39			ILLINOIS FED. AID PROJECT	

**TS 2055
EAGLE 7H**



TS SHEET NO. 12

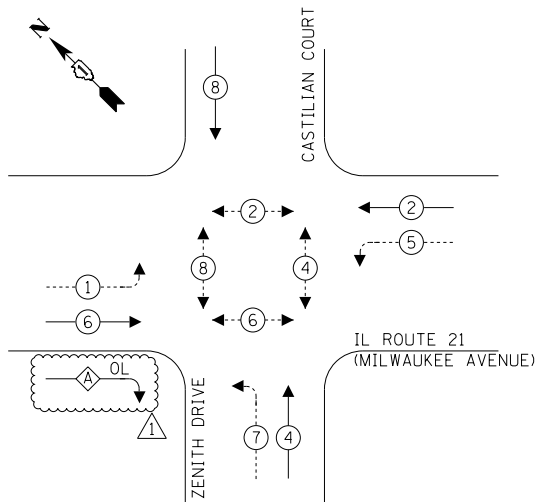


- NOTES:**
1. PROPOSED LOOPS ON THIS SHEET SHALL BE COORDINATED WITH IDOT CONTRACT 62N53. LOOPS SHALL BE INSTALLED IN PAVEMENT AFTER HMA SURFACE MILLING AND PRIOR TO HMA SURFACE INSTALLATION.
 2. EACH DETECTOR LOOP SHALL HAVE ITS OWN 1" COILABLE NON-METALIC CONDUIT BETWEEN THE EDGE OF PAVEMENT AND THE ADJACENT HANDHOLE AS SHOWN ON THE PLANS AND AS STATED IN THE TRAFFIC SIGNAL SPECIFICATIONS.
 3. THE TRAFFIC SIGNAL CONTROLLER EQUIPMENT FOR THIS PROJECT SHALL BE "EAGLE" TO MATCH THE EXISTING ADJACENT SYSTEM FOR THIS PROJECT.
 4. ALL PEDESTRIAN PUSH-BUTTONS SHALL BE APS.
 5. EACH APS PUSH-BUTTON AT THIS QUADRANT SHALL INCLUDE A MESSAGE THAT ANNOUNCES THE STREET TO BE CROSSED.

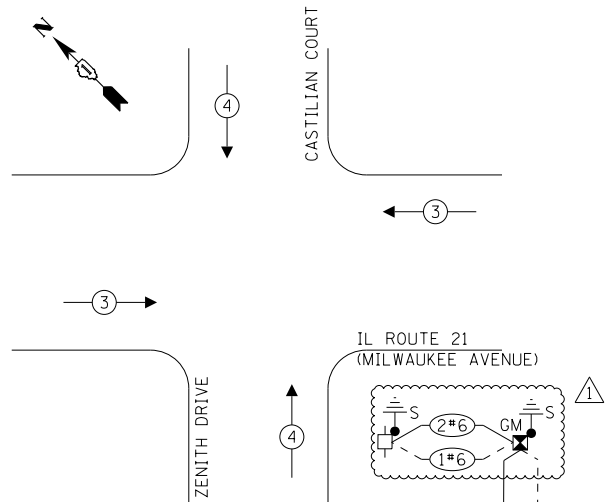
TS 2055
EAGLE 7H

	USER NAME = gfoley	DESIGNED - GJF	REVISED - 04-11-2023	STATE OF ILLINOIS DEPARTMENT OF TRANSPORTATION	TRAFFIC SIGNAL MODERNIZATION PLAN MILWAUKEE AVENUE (IL 21) AT ZENITH DRIVE / CASTILIAN CT			F.A.P. RTE.	SECTION	COUNTY	TOTAL SHEETS	SHEET NO.
	PLOT SCALE = 20.0000 "/td> <td>CHECKED - JBT</td> <td>REVISED -</td> <td>374</td> <td>21-00203-00-TL</td> <td>COOK</td> <td>44</td> <td>30</td>	CHECKED - JBT	REVISED -		374	21-00203-00-TL	COOK	44	30			
	PLOT DATE = 4/12/2023	DATE - 02-15-2023	FILE - 212221_PH2_SHT-TS-Signal Modernization_01.dgn		SCALE: 1" = 20'	SHEET 1 OF 1 SHEETS	STA. TO STA.	ILLINOIS FED. AID PROJECT				
								CONTRACT NO. 61J39				

PROPOSED CONTROLLER SEQUENCE



**PROPOSED EMERGENCY VEHICLE
PREEMPTION SEQUENCE**



LEGEND:

- ← (circle with star) → PROTECTED PHASE
- ← (circle with star and dot) → PROTECTED/PERMITTED PHASE
- ← (circle with star and arrow) → PEDESTRIAN PHASE
- ← (circle with star and OL) → OVERLAP

**RIGHT TURN OVERLAP
PHASE DESIGNATION:**

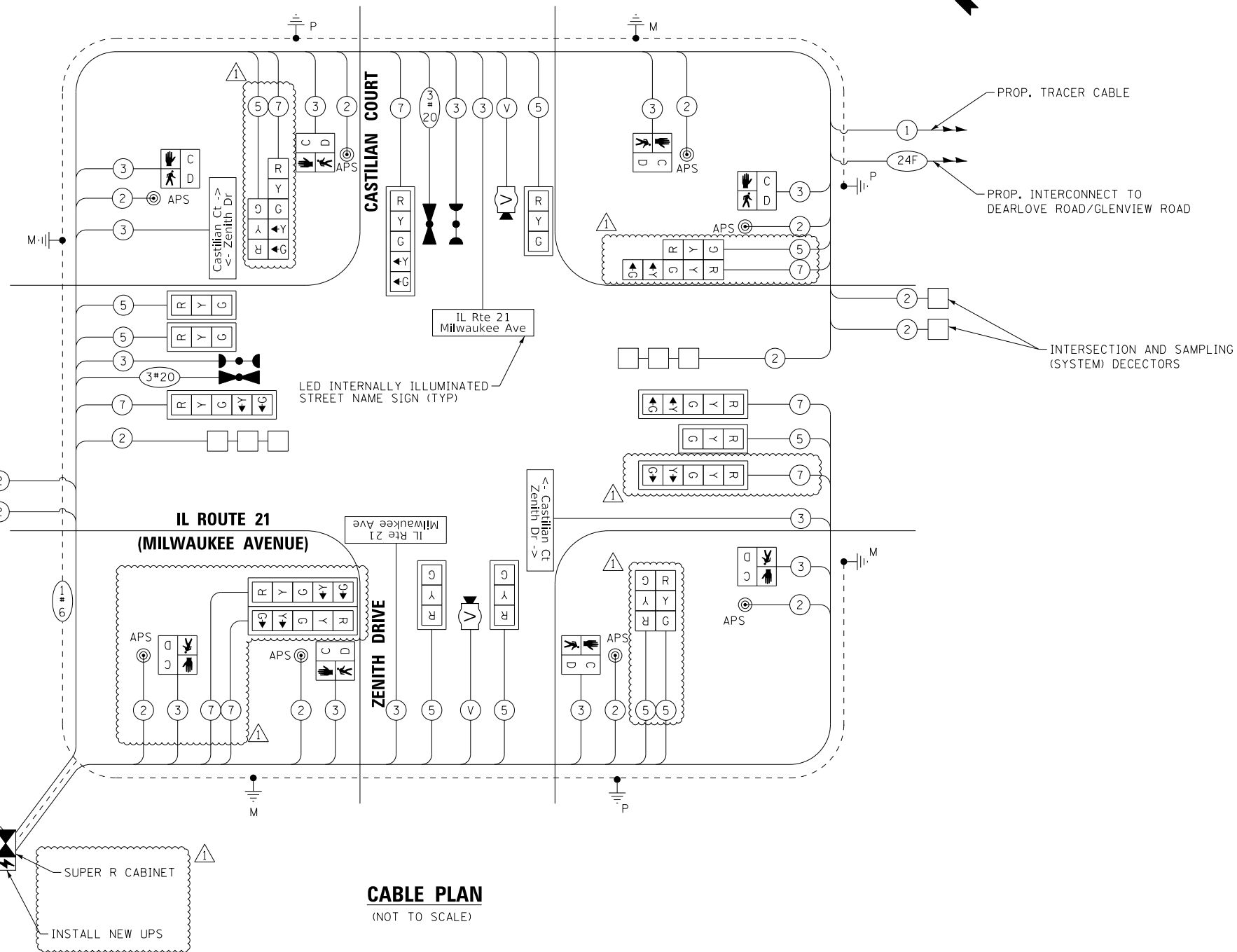
OVERLAP LETTER	PERMISSIVE PHASE	PROTECTED PHASE
A	6	7

**TRAFFIC SIGNAL
ELECTRICAL SERVICE REQUIREMENTS**

TYPE	QUANTITY	UNIT WATTAGE	TOTAL WATTAGE
SIGNAL HEAD			
3 - SECTION	10	11	110
4 - SECTION	0	14	0
5 - SECTION	8	13	104
PROGRAMMABLE SIGNALS			
3 - SECTION	0	22	0
4 - SECTION	0	32	0
5 - SECTION	0	28	0
PED. SIGNAL			
CONTROLLER	8	15	120
MASTER CONTROLLER	1	150	150
UPS	0	100	0
UPS	1	25	25
DETECTION			
RADAR	0	20	0
VIDEO	2	20	40
BLANK-OUT SIGN			
NETWORK SWITCH II OR III	0	25	0
CELLULAR MODEM	0	35	0
CELLULAR MODEM	0	15	0
TOTAL UPS SIZING			
UPS CHARGING	1	225	225
BATTERY HEATER MAT	1	180	180
CABINET HEATER	1	200	200
FLASHER	0	15	0
LED STREET NAME SIGN	4	120	480
LUMINAIRE	0	240	0
TOTAL SERVICE WIRE SIZING			1634

ENERGY COSTS TO:
ILLINOIS DEPARTMENT OF TRANSPORTATION
201 WEST CENTER COURT
SCHAUMBURG, IL 60196-1096
ENERGY SUPPLY CONTACT TERRI BLACK
PHONE: 847-816-5239
COMPANY: COMMONWEALTH EDISON
ACCOUNT NUMBER: ---

INTERSECTION AND SAMPLING (SYSTEM) DETECTORS



CABLE PLAN

(NOT TO SCALE)

TS SHEET NO. 13



USER NAME = gfoley	DESIGNED - GJF	REVISED - 04-11-2023
PLOT SCALE = 20.0000 "/>		

STATE OF ILLINOIS
DEPARTMENT OF TRANSPORTATION

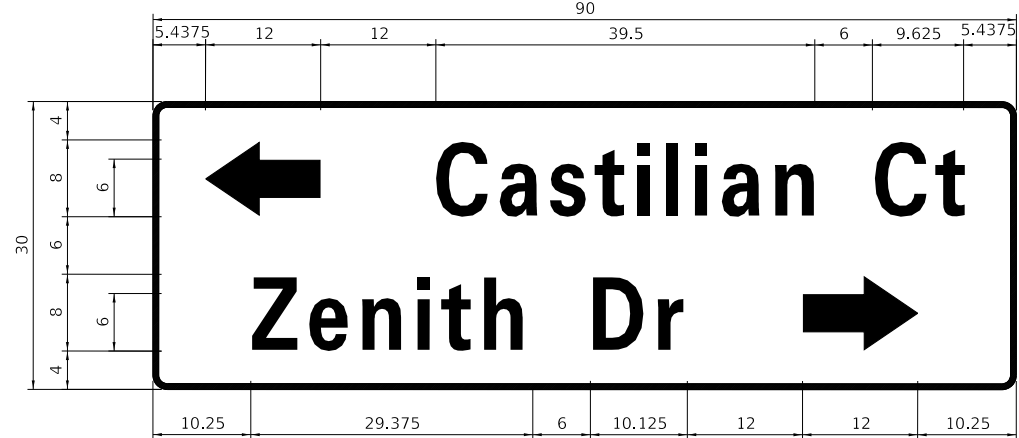
CABLE PLAN, PHASE DESIGNATION DIAGRAM, AND EMERGENCY VEHICLE PREEMPTION SEQUENCE			
SCALE: NTS	SHEET 1 OF 1 SHEETS	STA. TO STA.	

F.A.P. RTE. 374	SECTION 21-00203-00-TL	COUNTY COOK	TOTAL SHEETS 44	SHEET NO. 31
ILLINOIS			FED. AID PROJECT	

**TS 2055
EAGLE 7H**

SIGN PANEL – FOR LED INTERNALLY ILLUMINATED STREET NAME SIGNS

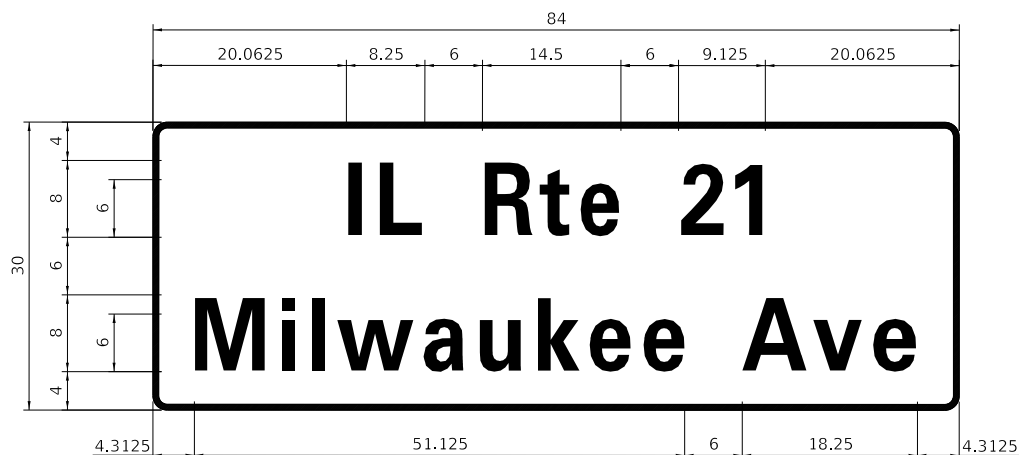
ALL DIMENSIONS ARE IN INCHES UNLESS NOTED OTHERWISE



DESIGN SERIES	AREA (SQ FT)	SIGN PANEL TYPE	QTY REQUIRED
D	18.75	LED	1



DESIGN SERIES	AREA (SQ FT)	SIGN PANEL TYPE	QTY REQUIRED
D	18.75	LED	1



DESIGN SERIES	AREA (SQ FT)	SIGN PANEL TYPE	QTY REQUIRED
D	17.5	LED	2

NOTE: FOR ADDITIONAL DESIGN AND INSTALLATION INFORMATION PLEASE SEE DISTRICT ONE LIGHTED STREET NAME SIGN DETAIL.

SCHEDULE OF QUANTITIES

ITEM DESCRIPTION	UNITS	TOTAL QTY.
UNDERGROUND CONDUIT, GALVANIZED STEEL, 2" DIA.	FOOT	780
UNDERGROUND CONDUIT, GALVANIZED STEEL, 3" DIA.	FOOT	75
UNDERGROUND CONDUIT, GALVANIZED STEEL, 4" DIA.	FOOT	433
HANDHOLE	EACH	4
HEAVY-DUTY HANDHOLE	EACH	2
DOUBLE HANDHOLE	EACH	2
PAINT NEW TRAFFIC SIGNAL POST	EACH	3
PAINT NEW MAST ARM AND POLE, UNDER 40 FOOT	EACH	2
PAINT NEW MAST ARM AND POLE, 40 FOOT AND OVER	EACH	1
ELECTRIC CABLE IN CONDUIT, SIGNAL NO. 14 2C	FOOT	1251
ELECTRIC CABLE IN CONDUIT, SIGNAL NO. 14 3C	FOOT	1849
ELECTRIC CABLE IN CONDUIT, SIGNAL NO. 14 5C	FOOT	1811
ELECTRIC CABLE IN CONDUIT, SIGNAL NO. 14 7C	FOOT	1528
ELECTRIC CABLE IN CONDUIT, LEAD-IN, NO. 14 1 PAIR	FOOT	2047
ELECTRIC CABLE IN CONDUIT, SERVICE, NO. 6 2 C	FOOT	167
ELECTRIC CABLE IN CONDUIT, EQUIPMENT GROUNDING CONDUCTOR, NO. 6 1C	FOOT	875
CONCRETE FOUNDATION, TYPE A	FOOT	16
CONCRETE FOUNDATION, TYPE C	FOOT	4
CONCRETE FOUNDATION, TYPE E 30-INCH DIAMETER	FOOT	14
CONCRETE FOUNDATION, TYPE E 36-INCH DIAMETER	FOOT	38
DRILL EXISTING HANDHOLE	EACH	2
SIGNAL HEAD, LED, 1-FACE, 3-SECTION, MAST-ARM MOUNTED	EACH	6
SIGNAL HEAD, LED, 1-FACE, 3-SECTION, BRACKET MOUNTED	EACH	4
SIGNAL HEAD, LED, 1-FACE, 5-SECTION, BRACKET MOUNTED	EACH	2
SIGNAL HEAD, LED, 1-FACE, 5-SECTION, MAST-ARM MOUNTED	EACH	6
PEDESTRIAN SIGNAL HEAD, LED, 1-FACE, BRACKET MOUNTED WITH COUNTDOWN TIMER	EACH	8
TRAFFIC SIGNAL BACKPLATE, LOUVERED, FORMED PLASTIC	EACH	12
INDUCTIVE LOOP DETECTOR	EACH	6
DETECTOR LOOP, TYPE I	FOOT	346
LIGHT DETECTOR	EACH	2
LIGHT DETECTOR AMPLIFIER	EACH	1
TEMPORARY TRAFFIC SIGNAL INSTALLATION	EACH	1
REMOVE EXISTING SERVICE INSTALLATION	EACH	1
REMOVE EXISTING TRAFFIC SIGNAL EQUIPMENT	EACH	1
REBUILD EXISTING HANDHOLE	EACH	1
REMOVE EXISTING HANDHOLE	EACH	5
REMOVE EXISTING DOUBLE HANDHOLE	EACH	1
REMOVE EXISTING CONCRETE FOUNDATION	EACH	7
EMERGENCY VEHICLE PRIORITY SYSTEM LINE SENSOR CABLE, NO. 20 3/C	FOOT	542
LED INTERNALLY ILLUMINATED STREET NAME SIGN	EACH	4
FULL-ACTUATED CONTROLLER AND TYPE SUPER R CABINET (SPECIAL)	EACH	1
SERVICE INSTALLATION, GROUND MOUNTED, METERED	EACH	1
VIDEO VEHICLE DETECTION SYSTEM, SINGLE APPROACH	EACH	2
EXPLORATION TRENCH (SPECIAL)	FOOT	20
PAINT NEW MAST ARM ASSEMBLY AND POLE WITH DUAL MAST ARMS, 1-UNDER 40 FEET, 1-OVER 40 FEET	EACH	1
UNINTERRUPTABLE POWER SUPPLY, SPECIAL	EACH	1
TRAFFIC SIGNAL POST, ALUMINUM 16 FT. (SPECIAL)	EACH	3
ACCESSIBLE PEDESTRIAN SIGNALS	EACH	8
STEEL MAST ARM ASSEMBLY AND POLE, 34 FT. (SPECIAL)	EACH	2
STEEL MAST ARM ASSEMBLY AND POLE, 42 FT. (SPECIAL)	EACH	1
STEEL MAST ARM ASSEMBLY AND POLE WITH DUAL MAST ARMS, 44 FT. AND 34 FT. (SPECIAL)	EACH	1
TEMPORARY TRAFFIC SIGNAL TIMING	EACH	1
ELECTRIC CABLE IN CONDUIT, STREET NAME SIGN, NO. 14 3C, TYPE SOOW	FOOT	754

* NOMINAL QUANTITY TO BE USED AT THE DIRECTION OF THE ENGINEER

*** 100% OF COST TO THE VILLAGE OF GLENVIEW

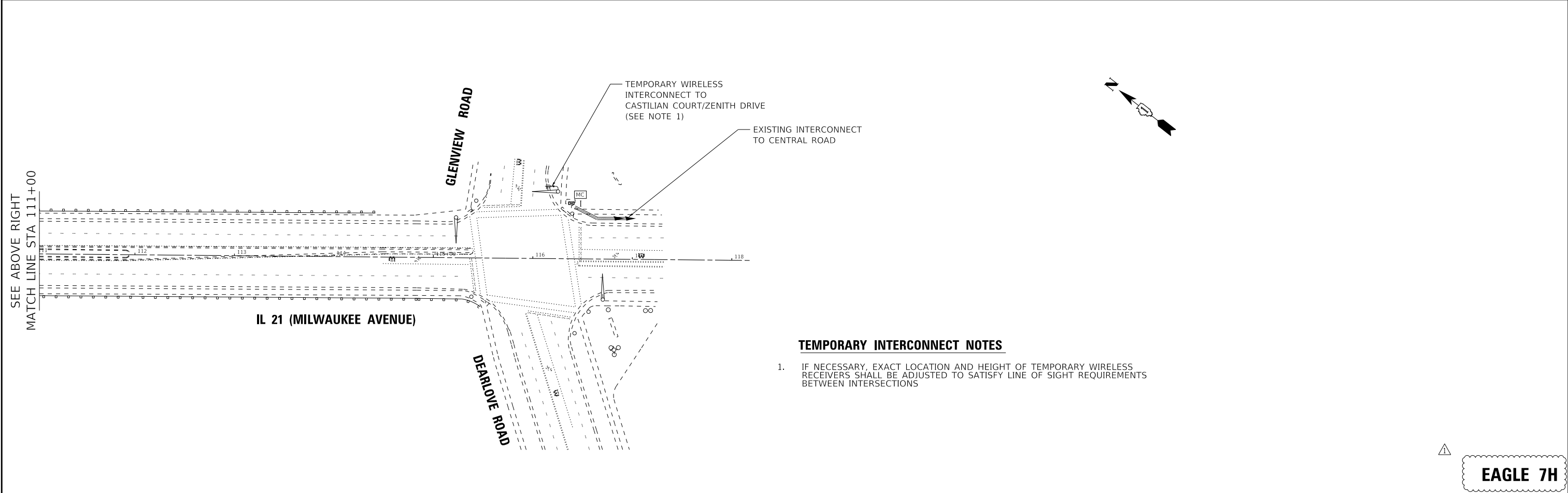
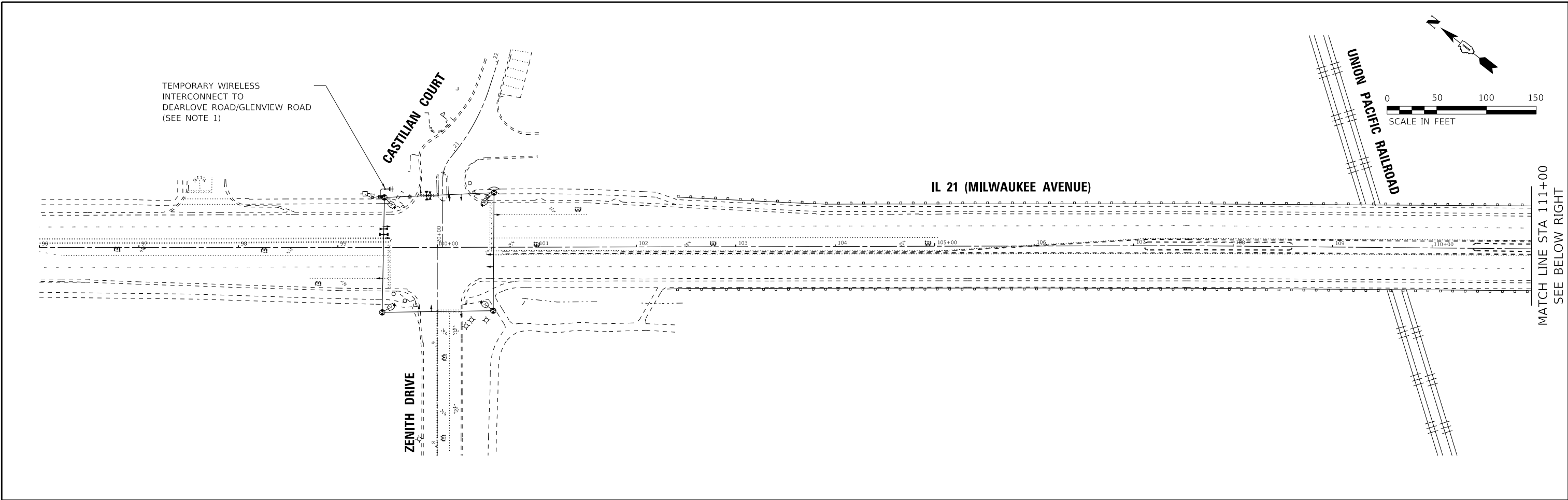
TS SHEET NO. 14

BAXTER & WOODMAN Consulting Engineers	USER NAME = gfoley	DESIGNED - GJF	REVISED - 04-11-2023
	PLOT SCALE = 20.0000' / in.	DRAWN - KAR	REVISED -
	PLOT DATE = 4/12/2023	CHECKED - JBT	REVISED -
		DATE - 02-15-2023	FILE - 212221_PH2_SHT-TS-Mast Arm Signs_01.dgn

STATE OF ILLINOIS
DEPARTMENT OF TRANSPORTATION

MAST ARM MOUNTED STREET NAME SIGNS AND SCHEDULE OF QUANTITIES	
SCALE: NTS	SHEET 1 OF 1 SHEETS STA. TO STA.

F.A.P. RTE.	SECTION	COUNTY	TOTAL SHEETS	SHEET NO.
374	21-00203-00-TL	COOK	44	32
CONTRACT NO. 61139			ILLINOIS FED. AID PROJECT	



TEMPORARY INTERCONNECT NOTES

1. IF NECESSARY, EXACT LOCATION AND HEIGHT OF TEMPORARY WIRELESS RECEIVERS SHALL BE ADJUSTED TO SATISFY LINE OF SIGHT REQUIREMENTS BETWEEN INTERSECTIONS

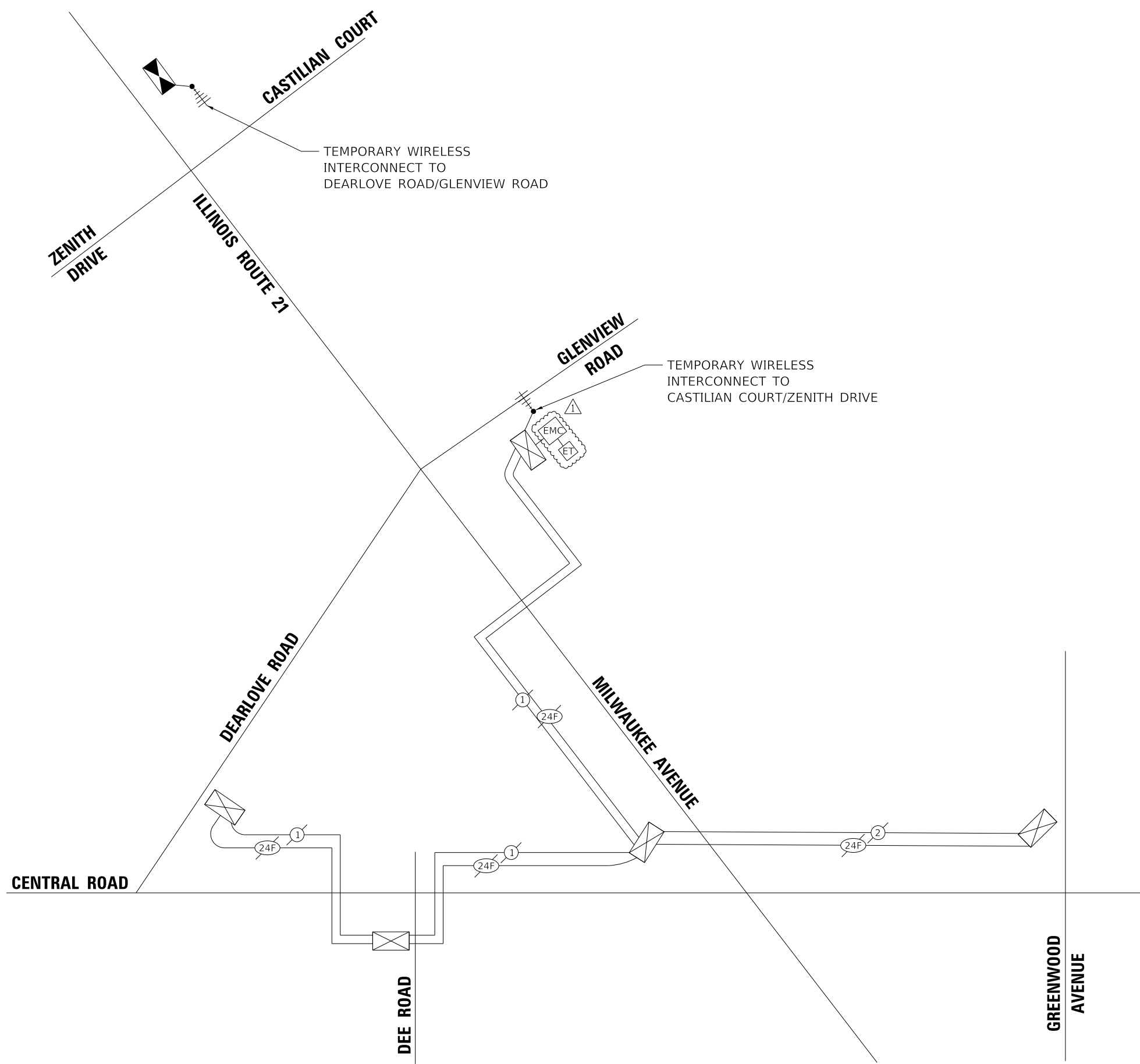
	USER NAME = gfoley	DESIGNED - GJF	REVISED - 04-11-2023
	PLOT SCALE = 50.0000' / in.	DRAWN - KAR	REVISED -
	PLOT DATE = 4/12/2023	CHECKED - JBT	REVISED -
		DATE - 02-15-2023	FILE - 212221_PH2_SHT-TS-Temp Interconnect Plan_01.dgn

STATE OF ILLINOIS
DEPARTMENT OF TRANSPORTATION

TEMPORARY INTERCONNECT PLAN IL ROUTE 21 (MILWAUKEE AVENUE) FROM ZENITH DR / CASTILIAN CT TO DEARLOVE RD / GLENVIEW RD			
SCALE: 1"=50'	SHEET 1 OF 1 SHEETS	STA.	TO STA.

F.A.P. RTE.	SECTION	COUNTY	TOTAL SHEETS	SHEET NO.
374	21-00203-00-TL	COOK	44	33
ILLINOIS			FED. AID PROJECT	

EAGLE 7H



TS SHEET NO. 16



BAXTER & WOODMAN
Consulting Engineers

USER NAME = gfoley	DESIGNED - GJF	REVISED - 04-11-2023
	DRAWN - KAR	REVISED -
PLOT SCALE = 20.0000' / in.	CHECKED - JBT	REVISED -
PLOT DATE = 4/12/2023	DATE - 02-15-2023	FILE - 212221_PH2_SHT-TS-Temp Interconnect Schematic_01.dgn

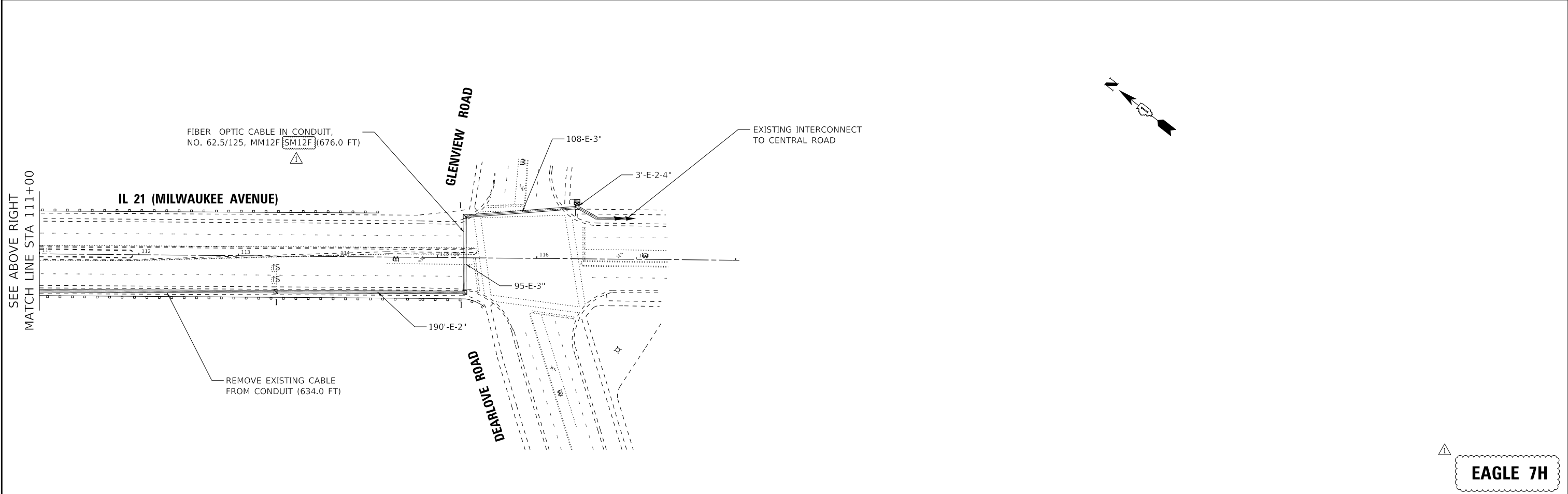
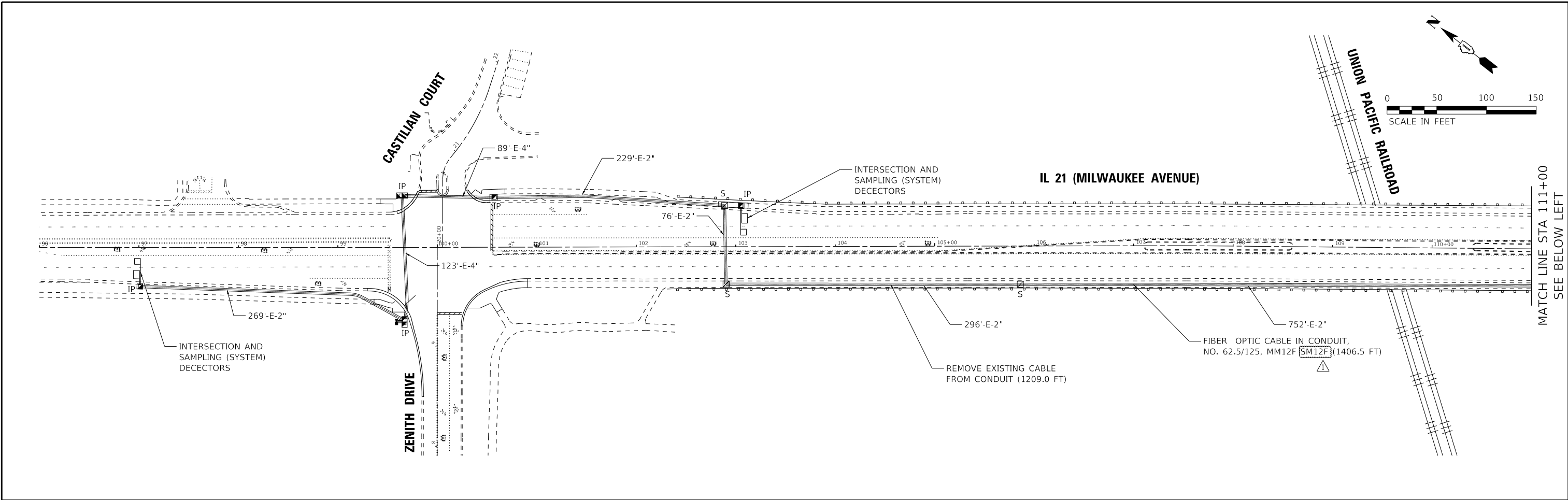
STATE OF ILLINOIS
DEPARTMENT OF TRANSPORTATION

**TEMPORARY INTERCONNECT SCHEMATIC
IL ROUTE 21 (MILWAUKEE AVENUE)
FROM ZENITH DR /CASTILIAN CT TO DEARLOVE RD /GLENVIEW RD**

SCALE: NTS SHEET 1 OF 1 SHEETS STA. TO STA.

F.A.P. RTE.	SECTION	COUNTY	TOTAL SHEETS	SHEET NO.
374	21-00203-00-TL	COOK	44	34
CONTRACT NO. 61139			ILLINOIS FED. AID PROJECT	

TS SHEET NO. 17



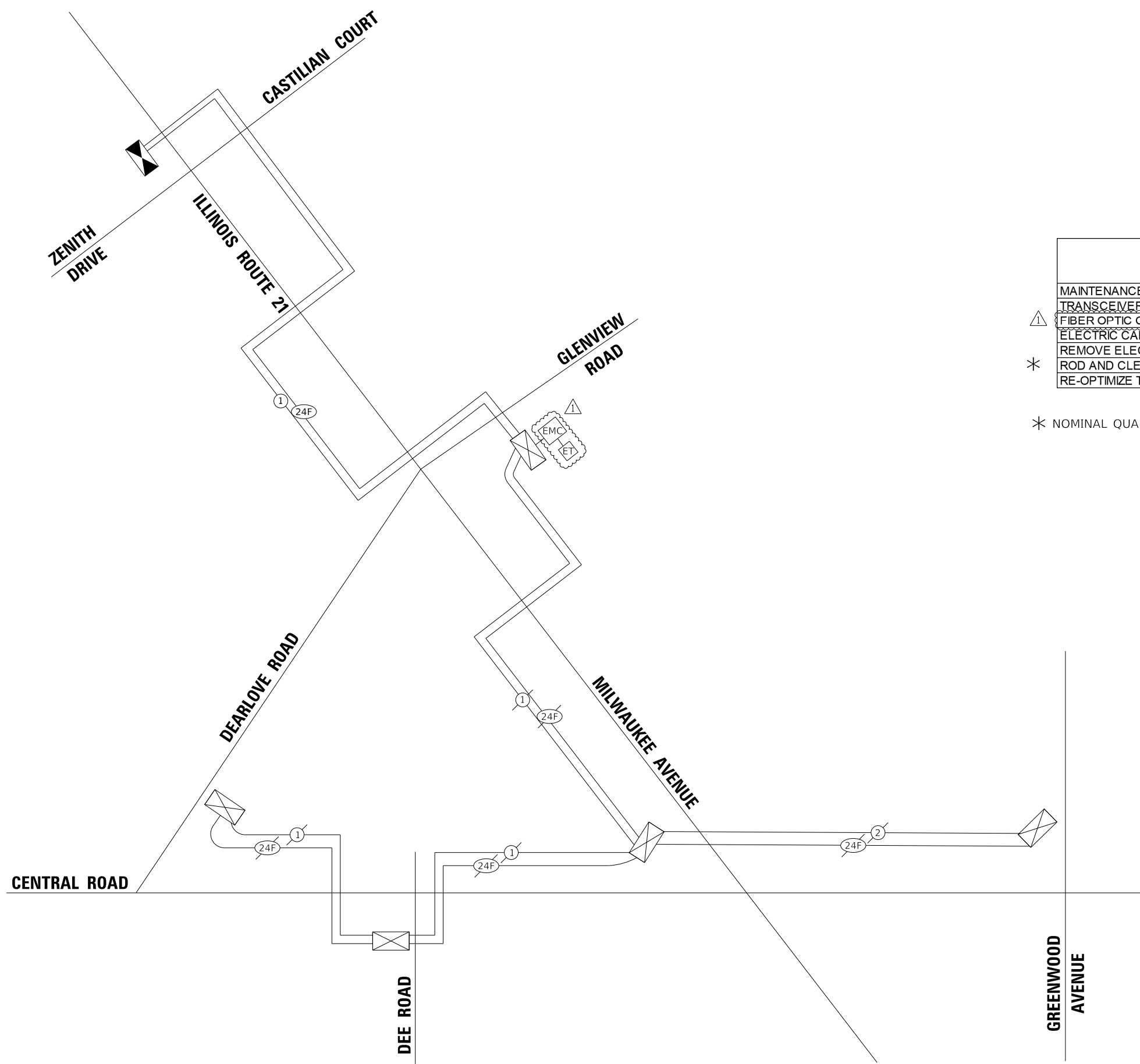
USER NAME = gfoley	DESIGNED - GJF	REVISED - 04-11-2023
PLOT SCALE = 50.0000' / in.	DRAWN - KAR	REVISED -
PLOT DATE = 4/12/2023	CHECKED - JBT	REVISED -
	DATE - 02-15-2023	FILE - 212221_PH2_SHT-TS-Interconnect_Plan_01.dgn

STATE OF ILLINOIS
DEPARTMENT OF TRANSPORTATION

INTERCONNECT PLAN
IL ROUTE 21 (MILWAUKEE AVENUE)
FROM ZENITH DR / CASTILIAN CT TO DEARLOVE RD / GLENVIEW RD

F.A.P. RTE.	SECTION	COUNTY	TOTAL SHEETS	SHEET NO.
374	21-00203-00-TL	COOK	44	35
CONTRACT NO. 61J39			ILLINOIS FED. AID PROJECT	





SCHEDULE OF QUANTITIES

ITEM DESCRIPTION	UNITS	TOTAL QTY.
MAINTAINANCE OF EXISTING TRAFFIC SIGNAL INSTALLATION	EACH	1
TRANSCEIVER - FIBER OPTIC	EACH	1
△ FIBER OPTIC CABLE IN CONDUIT, NO. 62.5/125, MM12F SM12F	FOOT	2083
ELECTRIC CABLE IN CONDUIT, TRACER, NO. 14 1C	FOOT	2083
REMOVE ELECTRIC CABLE FROM CONDUIT	FOOT	1843
* ROD AND CLEAN EXISTING CONDUIT	FOOT	800
RE-OPTIMIZE TRAFFIC SIGNAL SYSTEM LEVEL 2	EACH	1

* NOMINAL QUANTITY TO BE USED AT THE DIRECTION OF THE ENGINEER

TS SHEET NO. 18



BAXTER & WOODMAN
Consulting Engineers

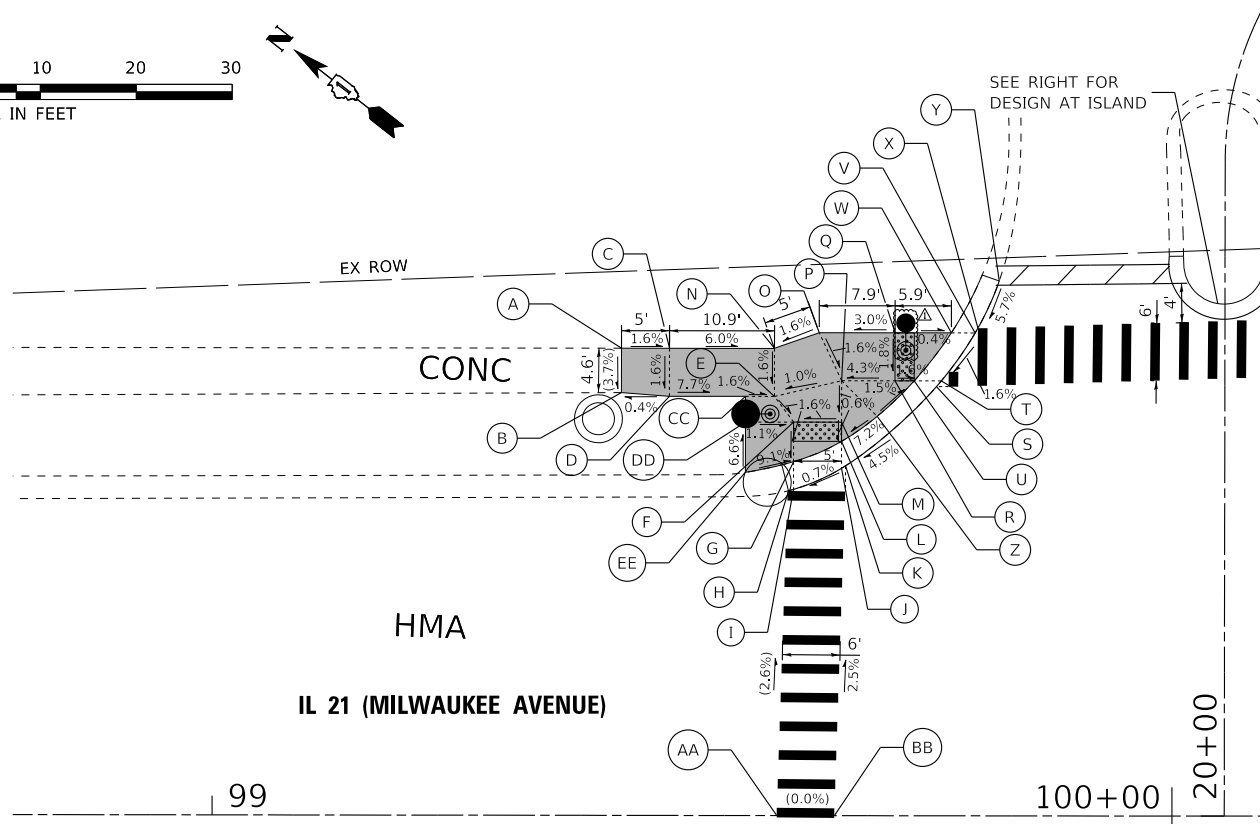
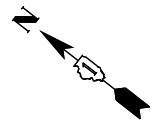
USER NAME = gfoley	DESIGNED - GJF	REVISED - △ 04-11-2023
	DRAWN - KAR	REVISED -
PLOT SCALE = 20.0000 ' / in.	CHECKED - JBT	REVISED -
PLOT DATE = 4/12/2023	DATE - 02-15-2023	FILE - 212221_PH2_SHT-TS-Interconnect Schematic_01.dgn

STATE OF ILLINOIS
DEPARTMENT OF TRANSPORTATION

PROPOSED INTERCONNECT SCHEMATIC AND SCHEDULE OF QUANTITIES
IL ROUTE 21 (MILWAUKEE AVENUE)
FROM ZENITH DR / CASTILIAN CT TO DEARLOVE RD / GLENVIEW RD

F.A.P. RTE.	SECTION	COUNTY	TOTAL SHEETS	SHEET NO.
374	21-00203-00-TL	COOK	44	36
CONTRACT NO. 61J39			ILLINOIS FED. AID PROJECT	

SCALE: NTS SHEET 1 OF 1 SHEETS STA. TO STA.

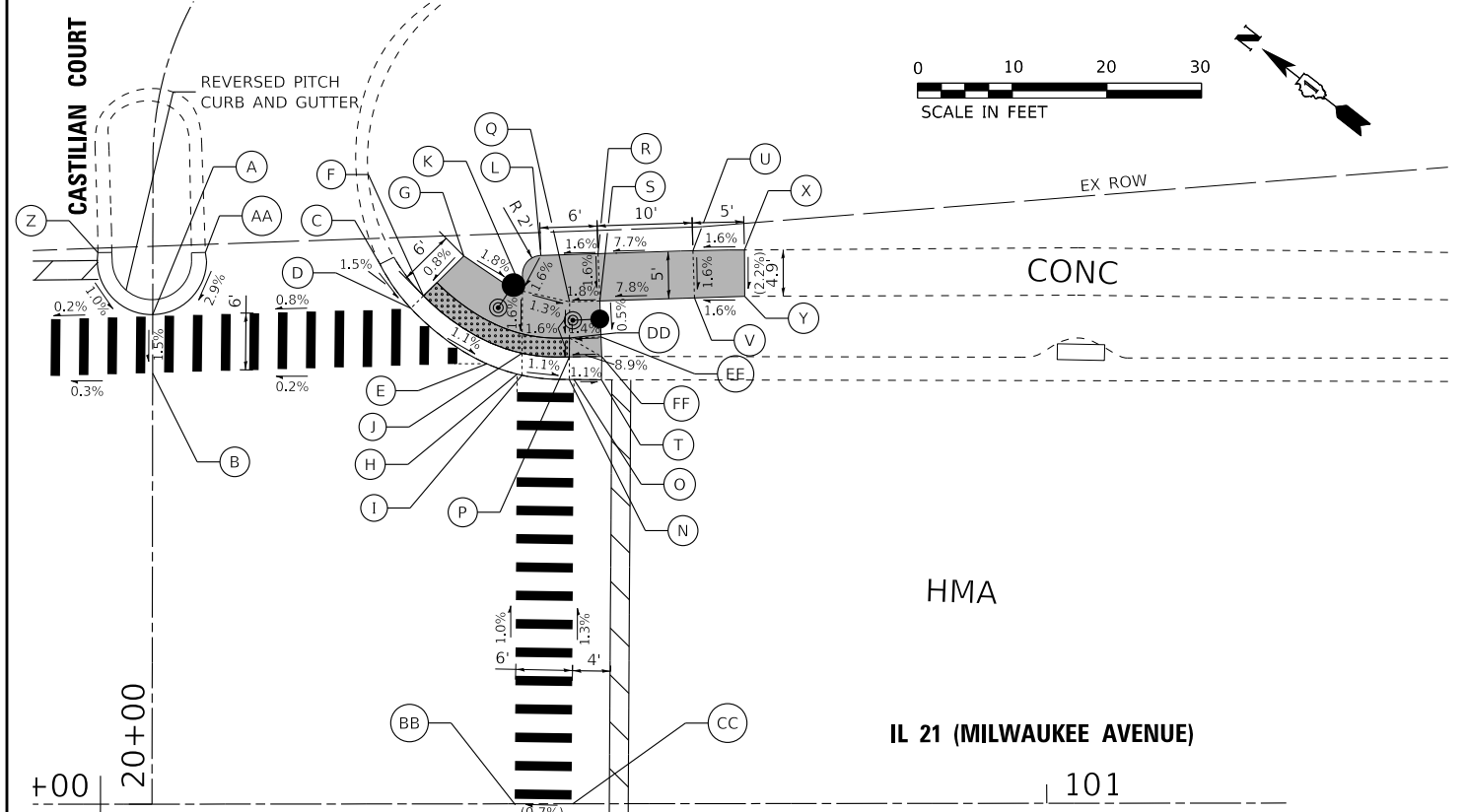
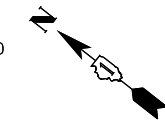


	STATION	OFFSET	ELEVATION
A	99+42.6	48.7' LT	(668.08')
B	99+42.6	44.1' LT	(667.90')
C	99+47.6	48.7' LT	668.00'
D	99+47.6	43.7' LT	667.92'
E	99+58.5	43.7' LT	667.26'
F	99+60.5	41.0' LT	667.21'
G	99+60.5	36.9' LT	667.14'
H	99+60.0	33.8' LT	(667.18')
I	99+60.5	34.0' LT	667.18'
J	99+66.0	36.5' LT	667.23'
K	99+71.1	40.4' LT	667.27'
L	99+65.5	39.0' LT	667.31'
M	99+65.5	41.0' LT	667.32'
N	99+58.5	48.7' LT	667.34'
O	99+63.2	50.3' LT	667.42'
P	99+65.5	45.3' LT	667.33'
Q	99+71.1	50.3' LT	667.68'
R	99+71.1	45.3' LT	667.59'
S	99+75.4	44.7' LT	667.54'
T	99+75.9	45.3' LT	667.56'
U	99+73.1	45.3' LT	667.56'
V	99+79.4	50.3' LT	667.65'
W	99+77.0	50.3' LT	667.65'
X	99+79.7	50.8' LT	667.66'
Y	99+81.9	55.7' LT	(667.97')
Z	99+69.2	41.6' LT	667.64'
AA	99+58.8	CL	(668.05')
BB	99+64.8	CL	(668.05')

	STATION	OFFSET	ELEVATION
CC	99+55.5	43.7' LT	667.31'
DD	99+55.5	41.0' LT	667.27'
EE	99+55.5	35.8' LT	(667.61')

LEGEND

- (X.X') EXISTING LENGTH/ELEVATION
- (X.X%) EXISTING SLOPE
- PROPOSED SIDEWALK
- DETECTABLE WARNINGS



	STATION	OFFSET	ELEVATION
A	100+05.6	51.6' LT	667.71'
B	100+05.6	45.6' LT	(667.62')
C	100+29.6	57.1' LT	(667.86')
D	100+32.9	52.4' LT	667.77'
E	100+40.1	46.9' LT	667.67'
F	100+34.2	53.7' LT	667.77'
G	100+38.5	57.9' LT	667.82'
H	100+44.1	45.4' LT	667.63'
I	100+44.6	45.3' LT	667.62'
J	100+44.6	47.6' LT	667.58'
K	100+44.6	54.2' LT	667.69'
L	100+44.6	56.0' LT	667.72'
M	100+46.6	58.0' LT	667.76'
N	100+49.6	44.9' LT	667.57'
O	100+50.1	44.9' LT	667.56'
P	100+49.6	47.2' LT	667.53'
Q	100+49.5	53.1' LT	667.56'
R	100+52.7	58.1' LT	667.58'
S	100+52.7	53.1' LT	667.56'
T	100+53.0	44.8' LT	(667.53')
U	100+63.0	58.4' LT	668.37'
V	100+63.0	53.5' LT	668.29'
X	100+68.1	58.5' LT	(668.45')
Y	100+68.1	53.6' LT	(668.34')

	STATION	OFFSET	ELEVATION
Z	99+99.7	58.3' LT	(667.80')
AA	100+11.1	58.3' LT	(667.96')
BB	100+43.8	CL	(668.08')
CC	100+49.8	CL	(668.12')
DD	100+49.6	49.2' LT	667.50'
EE	100+53.0	49.2' LT	667.54'
FF	100+53.0	47.3' LT	(667.83')

STATE OF ILLINOIS - PROFESSIONAL DESIGN FIRM
 LICENSE NO. - 184-001121 - EXPIRES 4/30/2024
 gfoley - File Default
 FILE NAME: \\corp.baxwood.com\project\azure\GLVNV212221-Milwaukee_ZenithCAD\Sheets_Phase 2\212221_P2_SHT-ADA_Details_01.dgn
 ...\\plandrv\pdrf-BW_Default.plt
 ...\\plandrv\pdrf-BW_Default.plt
 ...\\plandrv\pdrf-BW_Default.plt



USER NAME = gfoley	DESIGNED - GJF	REVISED - 04-11-2023
PLOT SCALE = 10.0000' / in.	DRAWN - KAR	REVISED -
PLOT DATE = 4/12/2023	CHECKED - JBT	REVISED -
	DATE - 02-15-2023	FILE - 212221_P2_SHT-ADA_Details_01.dgn

STATE OF ILLINOIS
DEPARTMENT OF TRANSPORTATION

MILWAUKEE AVENUE & ZENITH DRIVE
ADA DETAILS
SCALE: 1" = 10' SHEET 1 OF 2 SHEETS STA. TO STA.

F.A.P. RTE. 374	SECTION 21-00203-00-TL	COUNTY COOK	TOTAL SHEETS 44	SHEET NO. 37
CONTRACT NO. 61J39			ILLINOIS FED. AID PROJECT	



	STATION	OFFSET	ELEVATION
A	99+56.9	56.0' RT	666.70'
B	99+51.7	55.5' RT	666.95'
C	99+44.3	53.1' RT	667.33'
D	99+36.5	52.3' RT	(667.61')
E	99+36.4	57.1' RT	(667.50')
F	99+42.3	57.7' RT	667.25'
G	99+50.2	60.3' RT	666.87'
H	99+65.4	61.0' RT	666.47'
I	99+68.7	61.5' RT	666.50'
J	99+68.4	61.0' RT	666.51'
K	99+64.0	55.5' RT	666.63'
L	99+63.0	54.3' RT	666.66'
M	NOT USED		
N	99+57.0	49.3' RT	666.79'
O	99+57.0	52.5' RT	666.76'
P	99+51.9	46.2' RT	666.89'
Q	99+29.7	41.3' RT	(667.12')
R	99+58.8	CL	(668.05')
S	99+64.8	CL	(668.05')
T	99+84.6	150.1' RT	(664.65')
U	100+00.0	61.5' RT	(666.82')
V	100+00.0	55.5' RT	(666.96')
W	99+56.9	61.0' RT	666.62'
X	99+54.8	61.0' RT	666.70'
Y	99+54.8	65.0' RT	666.76'
Z	99+56.9	65.0' RT	666.69'
AA	99+62.9	61.0' RT	666.52'
BB	99+68.1	65.0' RT	666.87'
CC	99+62.9	65.0' RT	666.59'

LEGEND

- (X.X') EXISTING LENGTH/ELEVATION
- (X.X%) EXISTING SLOPE
- PROPOSED SIDEWALK
- ▨ DETECTABLE WARNINGS

IL 21 (MILWAUKEE AVENUE)

IL 21 (MILWAUKEE AVENUE)

STATE OF ILLINOIS
DEPARTMENT OF TRANSPORTATION

MILWAUKEE AVENUE & ZENITH DRIVE
ADA DETAILS

SCALE: 1" = 10' SHEET 2 OF 2 SHEETS STA. TO STA.

F.A.P. RTE.	SECTION	COUNTY	TOTAL SHEETS	SHEET NO.
374	21-00203-00-TL	COOK	44	38
CONTRACT NO. 61J39				

ILLINOIS FED. AID PROJECT

STATE OF ILLINOIS - PROFESSIONAL DESIGN FIRM
 LICENSE NO. - 184-001211 - EXPIRES 4/30/2024
 gfoley
 FILE NAME: \\corp.baxwood.com\project\azure\GLVNV212221-Milwaukee_Zenith\CAD\Sheets_Phase 2\12221_PH2_SHT-ADA_Details_02.dgn

...\\pld\rv\pof\B\W_Default.plt
 ...\\pld\122221_PH2_PlanSet.tbl
 \\corp.baxwood.com\project\azure\GLVNV212221-Milwaukee_Zenith\CAD\Sheets_Phase 2\12221_PH2_SHT-ADA_Details_02.dgn