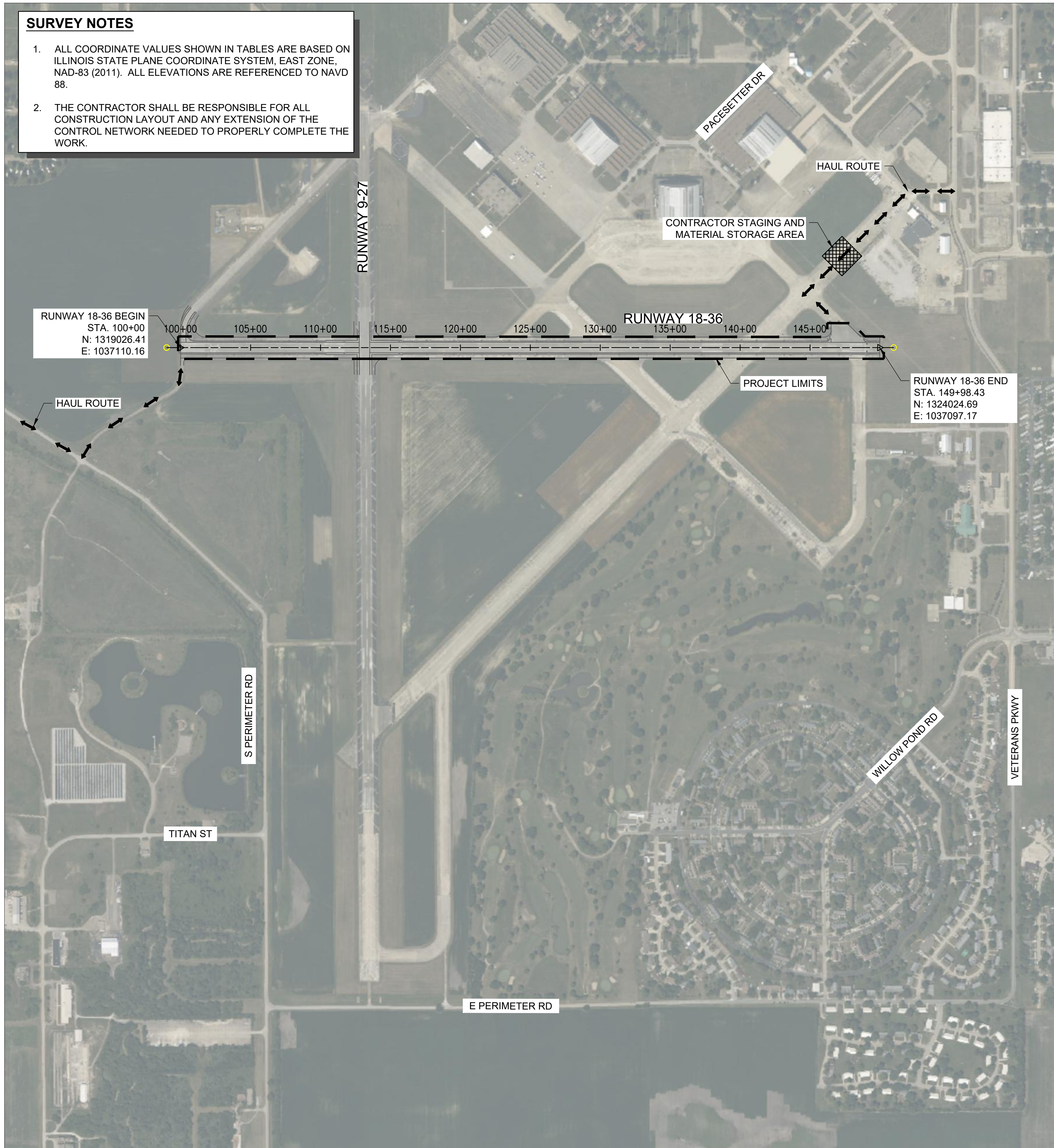


SURVEY NOTES

1. ALL COORDINATE VALUES SHOWN IN TABLES ARE BASED ON ILLINOIS STATE PLANE COORDINATE SYSTEM, EAST ZONE, NAD-83 (2011). ALL ELEVATIONS ARE REFERENCED TO NAVD 88.
2. THE CONTRACTOR SHALL BE RESPONSIBLE FOR ALL CONSTRUCTION LAYOUT AND ANY EXTENSION OF THE CONTROL NETWORK NEEDED TO PROPERLY COMPLETE THE WORK.



ALIGNMENT DATA				
ALIGNMENT	LOCATION	STATION	EASTING	NORTHING
RUNWAY 18-36	BEGIN	100+00	1,037,110.16	1,319,026.41
	END	149+98.43	1,037,097.17	1,324,024.69

SCOPE OF WORK

- PROJECT CONSISTS OF NOMINAL DEPTH ASPHALT MILLING, HMA OVERLAY, HMA PATCHING, HMA CRACK SEALING, AND WATERBORNE MARKING.

GENERAL

- RANTOUL NATIONAL AVIATION CENTER IS A NON-TOWER CONTROLLED, GENERAL AVIATION AIRPORT COMPRISED OF TWO PAVED RUNWAYS (RUNWAY 18-36 AND RUNWAY 9-27).
- THE PROPOSED CONSTRUCTION WILL REQUIRE THE CLOSURE OF RUNWAY 18-36 FOR THE DURATION OF THE PROJECT. THE CONNECTING TAXIWAYS AND RUNWAY 9-27 WILL BE CLOSED AT VARIOUS TIMES THROUGHOUT THE PROJECT.
- IN ORDER TO MAINTAIN AN ACTIVE RUNWAY 9-27, FLAGGERS WITH TWO-WAY RADIO COMMUNICATION WILL BE REQUIRED.

AIRFIELD SAFETY

- AIRFIELD SAFETY SHALL BE HELD PARAMOUNT AT ALL TIMES. ANY INDIVIDUALS RESPONSIBLE FOR INCURSIONS OR POTENTIAL INCURSIONS WITH AIR TRAFFIC DUE TO NON-COMPLIANCE WITH REQUIREMENTS SET FORTH IN THESE PLANS, SPECIFICATIONS, SPECIAL PROVISIONS, AND FAA ADVISORY CIRCULAR 150/5370-2 (CURRENT EDITION) WILL BE SUBJECT TO AN IMMEDIATE SUSPENSION OF DRIVING PRIVILEGES ON THE AIRPORT OR A COMPLETE RESTRICTION FROM ENTERING THE AIR OPERATIONS AREA ALTOGETHER. THE AIRPORT MANAGER OR RESIDENT ENGINEER/TECHNICIAN MAY STOP THE WORK AT ANY TIME THEY BELIEVE AIRFIELD SAFETY IS BEING COMPROMISED.
- AIRPORT SECURITY WILL BE MAINTAINED AT ALL TIMES. ONLY CONTRACTOR EMPLOYEES SHALL BE ALLOWED WITHIN THE PROJECT LIMITS.



Engineering | Planning | Allied Services
 Hanson Professional Services Inc.
 1525 S. 6th Street
 Springfield, IL 62703
 phone: 217-788-2450
 fax: 217-788-2503
 Offices Nationwide
 www.hanson-inc.com

Illinois Licensed
 Professional Service Corporation
 #184-001084



Rantoul National Aviation Center
 333 South Tanner Street
 Rantoul, Illinois 61866
 Telephone: 217.892.6800
 Fax: 217.892.6899

**REHABILITATE
 RUNWAY 18-36**

IDA No: TIP-4959

SBGP No:
 3-17-SBGP-162/171/184

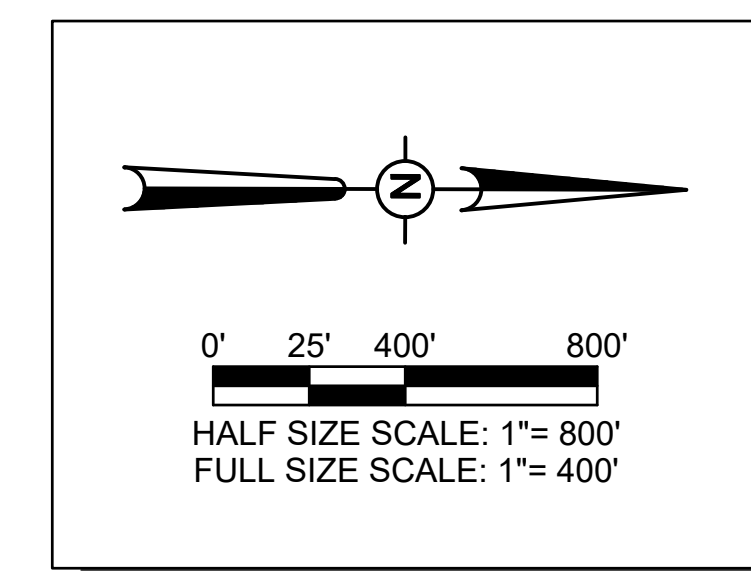
Contract No.: RA018

NO.	DATE	DESCRIPTION		
		DES	DWN	REV

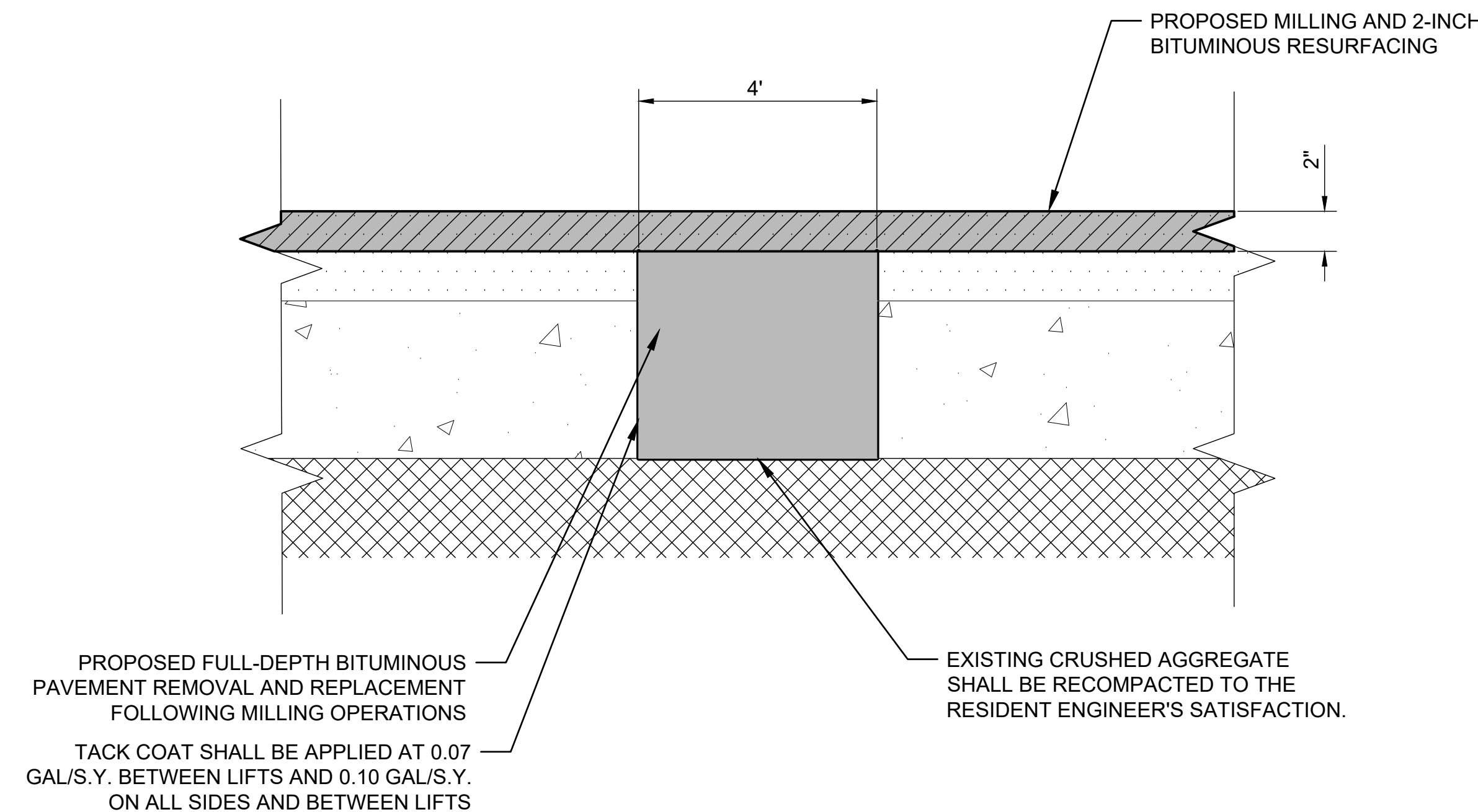
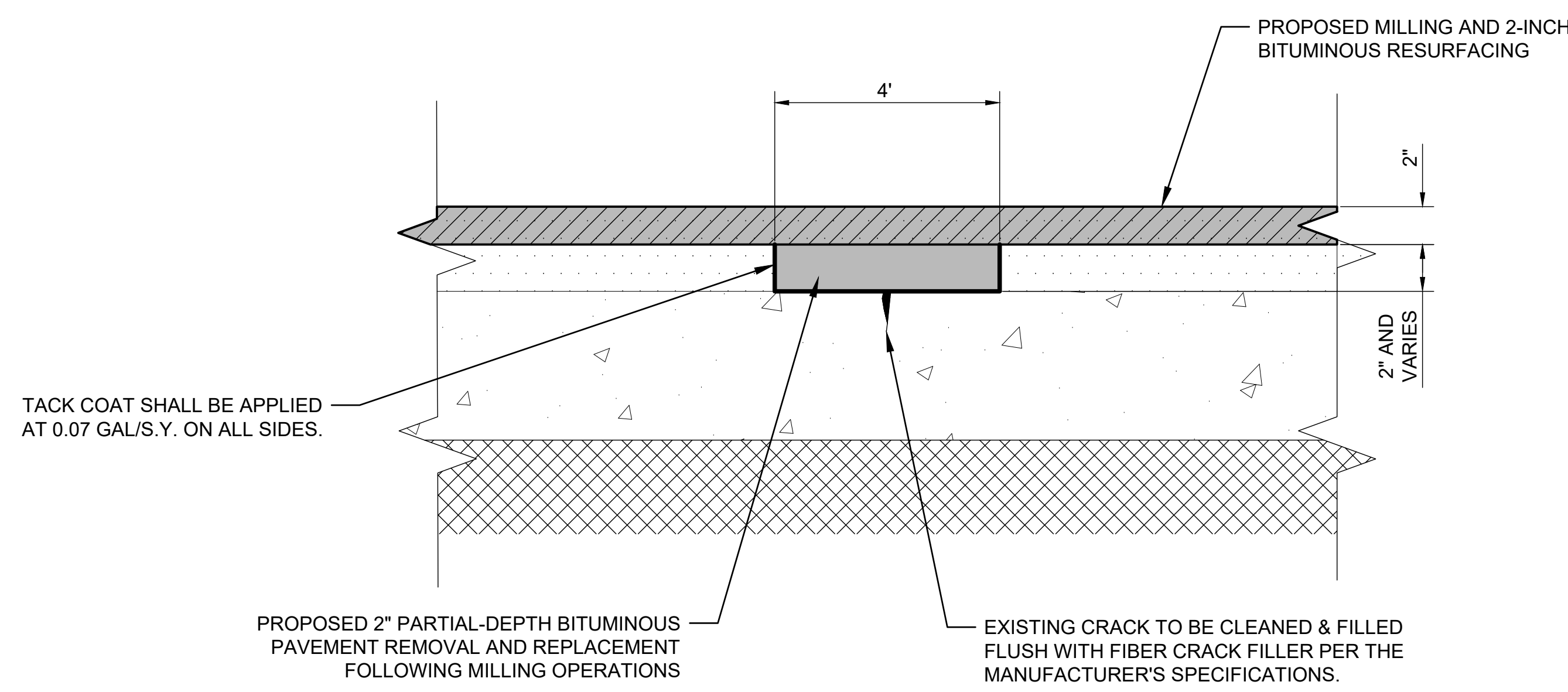
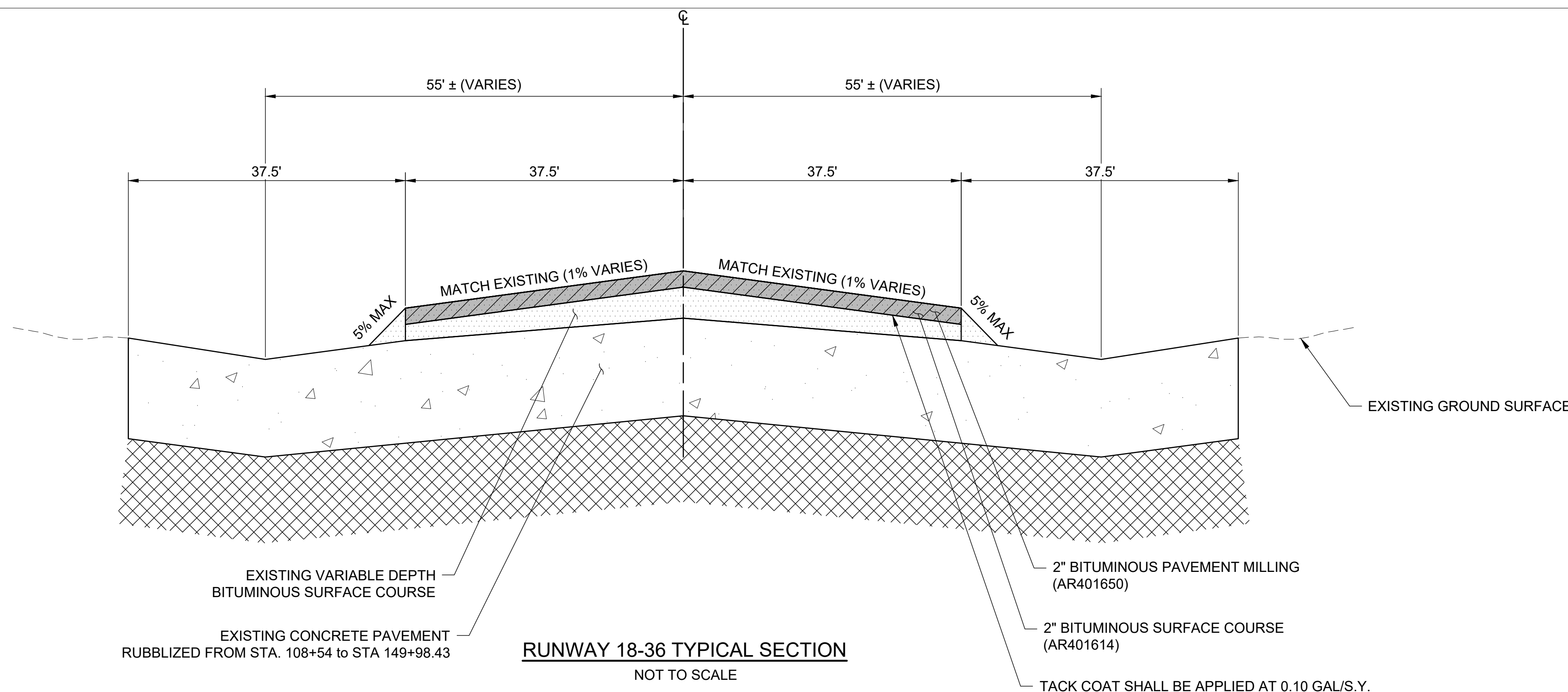
ISSUE: 5/13/2022
 PROJECT NO: 21A0106
 CAD FILE: G-003-SOW.DWG
 DESIGN BY: CEM 5/5/2022
 DRAWN BY: CEM 5/5/2022
 REVIEWED BY: JMO 5/5/2022

SHEET TITLE

SCOPE OF WORK



MAR 14, 2023 1:40 PM ENG0101009
 I:\2\JOBS\21A0106\CAD\AIRPORT\TSHEETC-003-SOW.DWG



EXISTING	PROPOSED	LEGEND
		BIT. SURF. CSE.-METHOD II, SUPERPAVE (2")
		BIT. PAVEMENT MILLING (2")
		BITUMINOUS PAVEMENT
		CONCRETE PAVEMENT

REHABILITATE RUNWAY 18-36

IDA No: TIP-4959

SBGP No:
3-17-SBGP-162/171/184

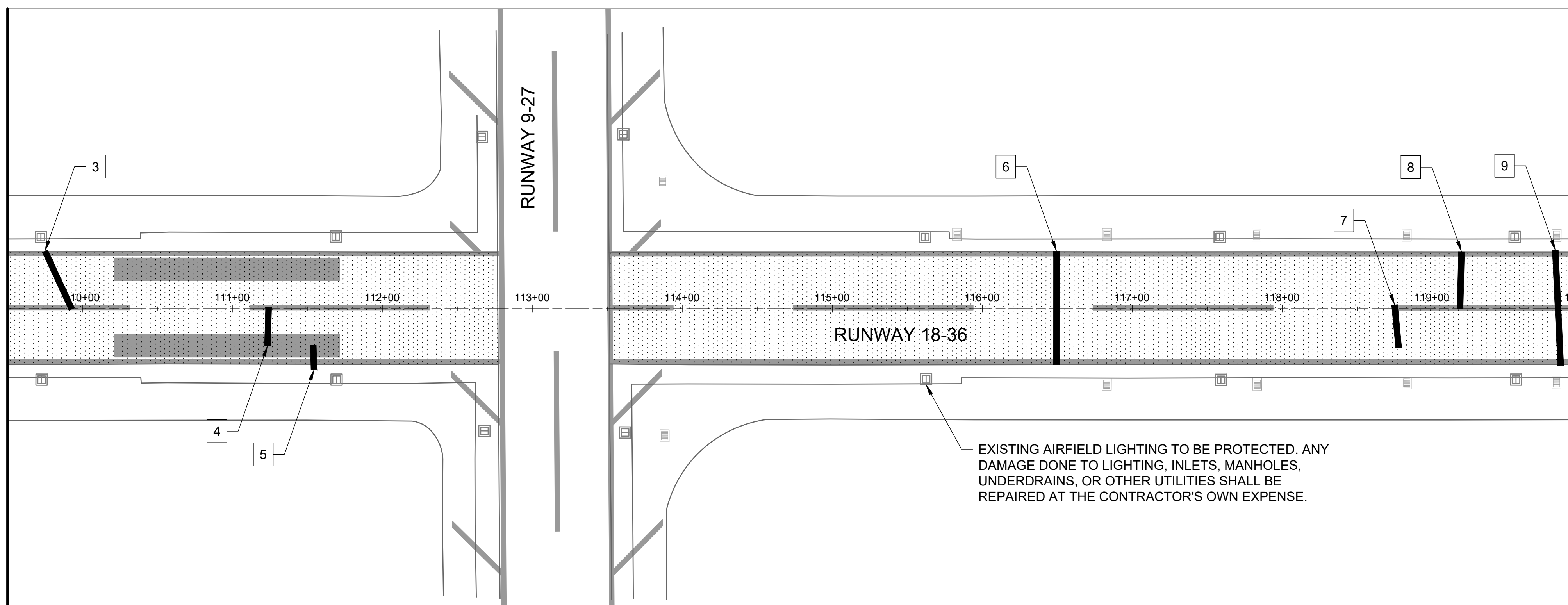
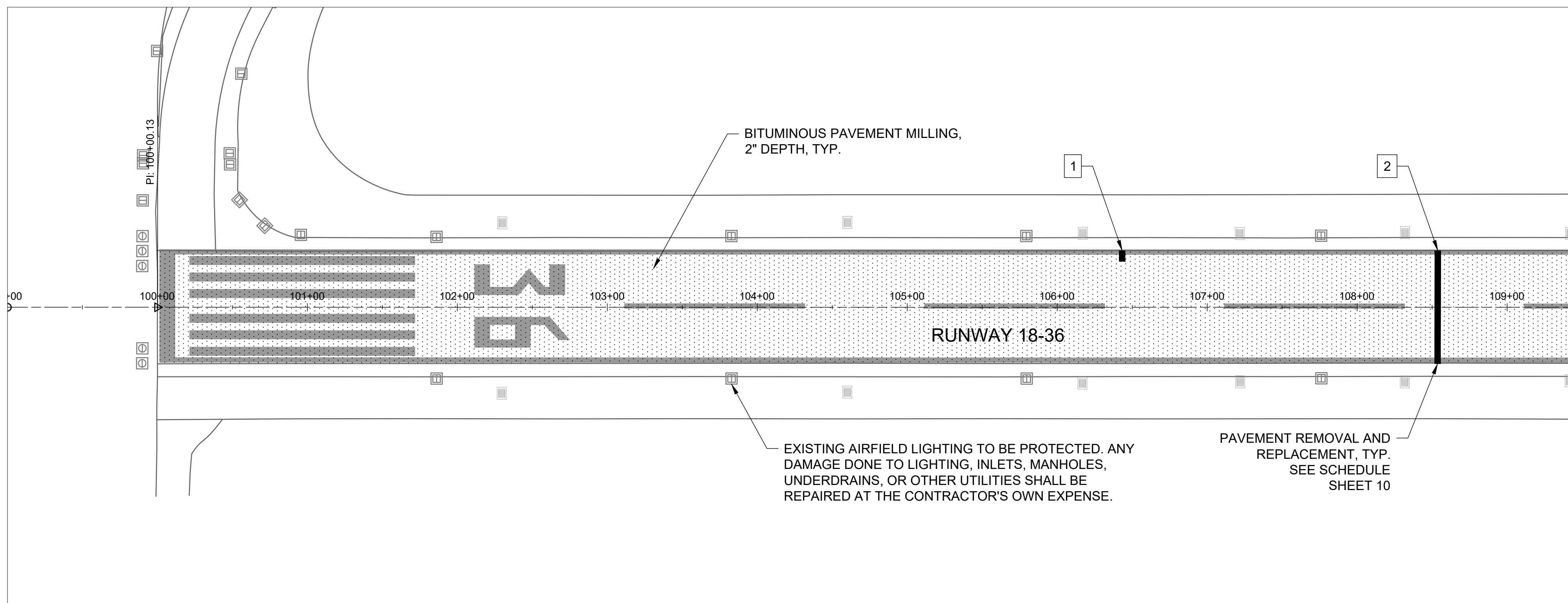
Contract No.: RA018

NO.	DATE	DESCRIPTION		
		DES	DWN	REV

ISSUE: 5/13/2022
PROJECT NO: 21A0106
CAD FILE: C-301-TYP.DWG
DESIGN BY: CEM 5/5/2022
DRAWN BY: CEM 5/5/2022
REVIEWED BY: JMO 5/5/2022

SHEET TITLE

TYPICAL SECTIONS



ELECTRICAL NOTES

1. THE CONTRACTOR SHALL EXAMINE THE SITE TO CONFIRM AND FIELD VERIFY EXISTING SITE CONDITIONS. THE CONTRACTOR SHALL FIELD VERIFY RESPECTIVE CIRCUITS AND POWER SOURCES PRIOR TO REMOVING, DISCONNECTING, WORKING ON, RELOCATING, RECONNECTING, AND/OR INSTALLING THE RESPECTIVE AIRFIELD LIGHTING, TAXI SIGN, NAVAID, OR OTHER DEVICES. CONTRACTOR SHALL REPORT ANY VARIATIONS, DEFICIENCIES, AND/OR APPARENT SAFETY CONCERNS TO THE RESIDENT ENGINEER/TECHNICIAN.
2. WHEN A RUNWAY IS CLOSED THE RESPECTIVE LIGHTING AND NAVAIDS SHALL BE SHUT OFF. WHEN A TAXIWAY IS CLOSED THE RESPECTIVE LIGHTING SYSTEM SHALL BE SHUT OFF.
3. ALL WORK, POWER OUTAGES, AND/OR SHUT DOWN OF EXISTING SYSTEMS SHALL BE COORDINATED WITH THE AIRPORT MANAGER/DIRECTOR AND RESIDENT ENGINEER/TECHNICIAN.

NOTES

CLEAN & SEAL BITUMINOUS CRACKS

1. A NOMINAL QUANTITY OF AR201661 "CLEAN AND SEAL BITUMINOUS CRACKS" HAS BEEN INCLUDED AND WILL BE LAID OUT BY THE RESIDENT ENGINEER FOLLOWING PAVEMENT MILLING. THE NOMINAL QUANTITY WAS DETERMINED BY A FIELD SURVEY (CONDUCTED ON 02/22/22) AND ASSUMES THAT 50% OF SURVEYED CRACKS WILL BE ELIMINATED AFTER THE COMPLETION OF MILLING.

BITUMINOUS PAVEMENT MILLING

2. CONTRACTOR SHALL PROTECT ALL ADJACENT PAVEMENT EDGES DURING MILLING AND PAVING OPERATIONS. ANY DAMAGE DONE TO EXISTING PAVEMENT OR MARKINGS SHALL BE REPAIRED OR REMARKED AT THE CONTRACTOR'S EXPENSE.
3. ALL MILLED MATERIAL SHALL BE HAULED OFFSITE UNLESS OTHERWISE DIRECTED BY THE RESIDENT ENGINEER/TECHNICIAN. MILLED MATERIAL MAY BE USED TO MAKE REPAIRS TO THE HAUL ROUTE AS NEEDED AND APPROVED BY THE RESIDENT ENGINEER.

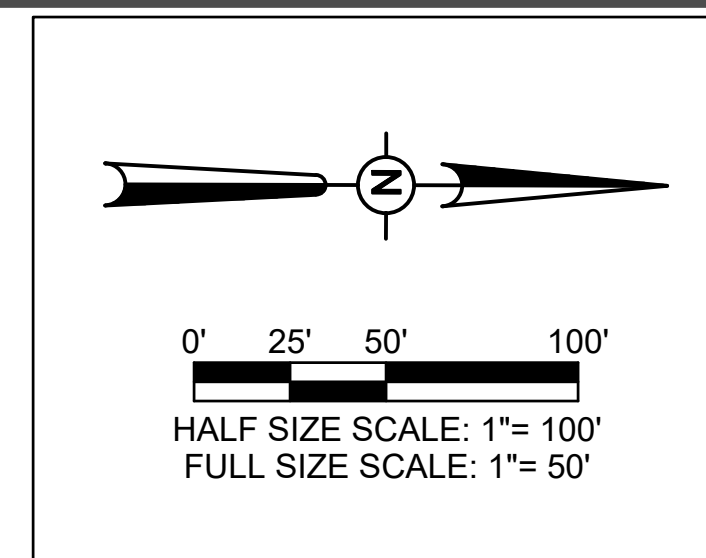
REMOVE & REPLACE BITUMINOUS PAVEMENT

1. SEE DETAILS SHEET FOR PATCHING. PATCHING LOCATIONS ARE APPROXIMATE AND WILL BE CONFIRMED AND LAID OUT BY THE RESIDENT ENGINEER/TECHNICIAN FOLLOWING PAVEMENT MILLING.
2. ALL PATCHES INDICATED AS PARTIAL (TYPE A) OR FULL DEPTH (TYPE B) WERE DETERMINED DURING A FIELD SURVEY AND PRIOR TO MILLING. FOLLOWING MILLING, AND UPON INSPECTION BY RESIDENT ENGINEER/TECHNICIAN, PARTIAL PATCHES MAY BE CONVERTED TO TYPE B (FULL-DEPTH) PATCH TO BE MEASURED AND PAID FOR UNDER PAY ITEM AR401916 OR REMOVED.

TEMPORARY EROSION CONTROL

1. DURING CONSTRUCTION, THE CONTRACTOR SHALL CONDUCT THEIR OPERATIONS IN SUCH A MANNER TO PREVENT DEBRIS FROM ENTERING THE DOWNSTREAM DRAINAGE PIPES. FAILURE TO DO SO THAT RESULTS IN DEBRIS DEPOSITS IN DOWNSTREAM PIPE OR STRUCTURES WILL REQUIRE THE CONTRACTOR TO REMOVE THE RESULTING DEBRIS AT NO ADDITIONAL COST TO THE OWNER.

EXISTING	PROPOSED	LEGEND
		AR401650 - BITUMINOUS PAVEMENT MILLING
		REMOVE AND REPLACE BIT. PAVEMENT
		INLET
		AIRFIELD LIGHTING



REHABILITATE RUNWAY 18-36

IDA No: TIP-4959

SBGP No: 3-17-SBGP-162/171/184

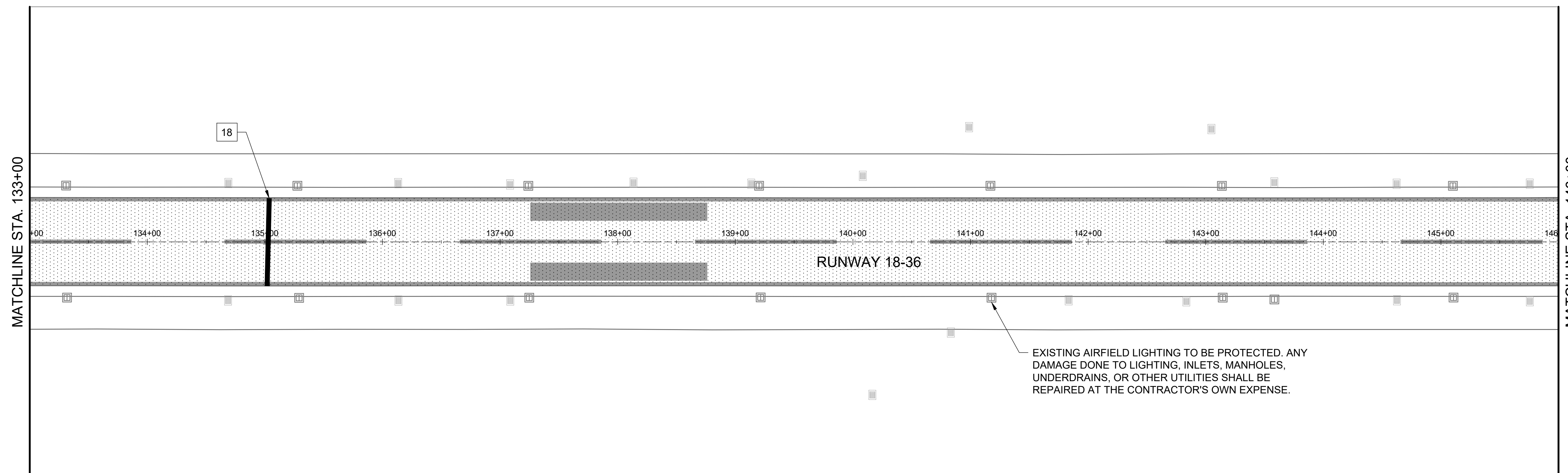
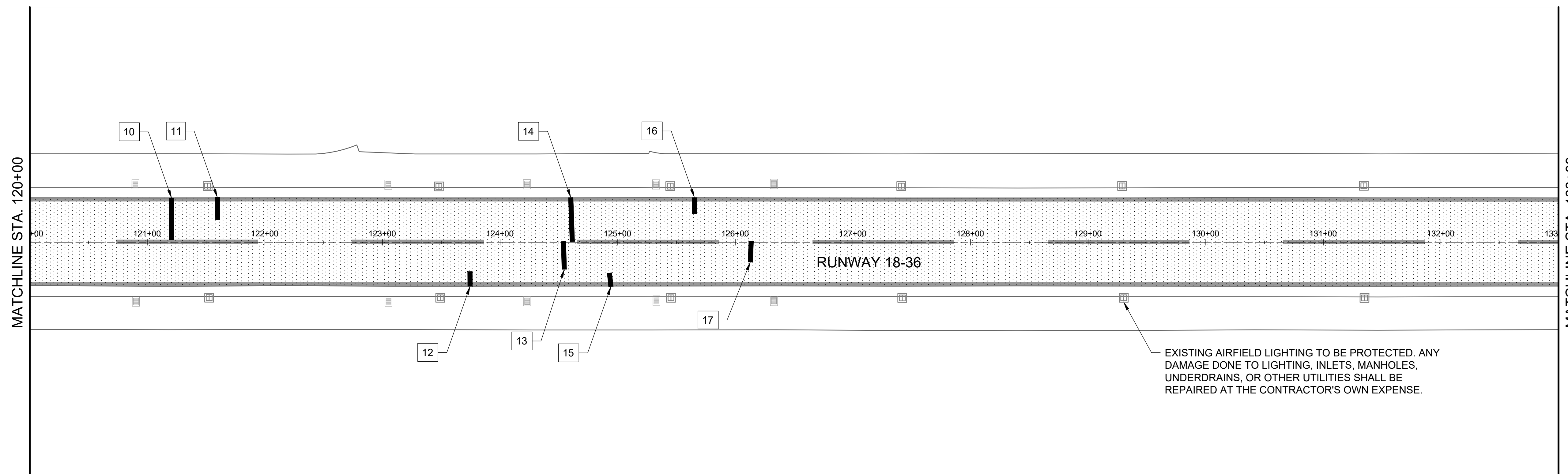
Contract No.: RA018

NO.	DATE	DESCRIPTION		
		DES	DWN	REV

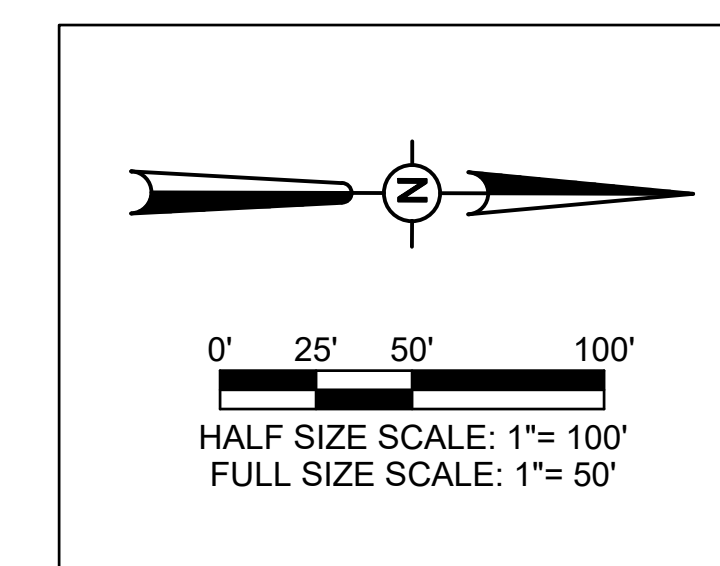
ISSUE: 5/13/2022
PROJECT NO: 21A0106
CAD FILE: C-101-PREP.DWG
DESIGN BY: CEM 5/5/2022
DRAWN BY: CEM 5/5/2022
REVIEWED BY: JMO 5/5/2022

SHEET TITLE

PAVEMENT PREPARATION PLAN - STA. 100+00 TO STA. 120+00



EXISTING	PROPOSED	LEGEND
		AR401650 - BITUMINOUS PAVEMENT MILLING
		REMOVE AND REPLACE BIT. PAVEMENT
		INLET
		AIRFIELD LIGHTING



REHABILITATE
RUNWAY 18-36

IDA No: TIP-4959

SBGP No:
3-17-SBGP-162/171/184

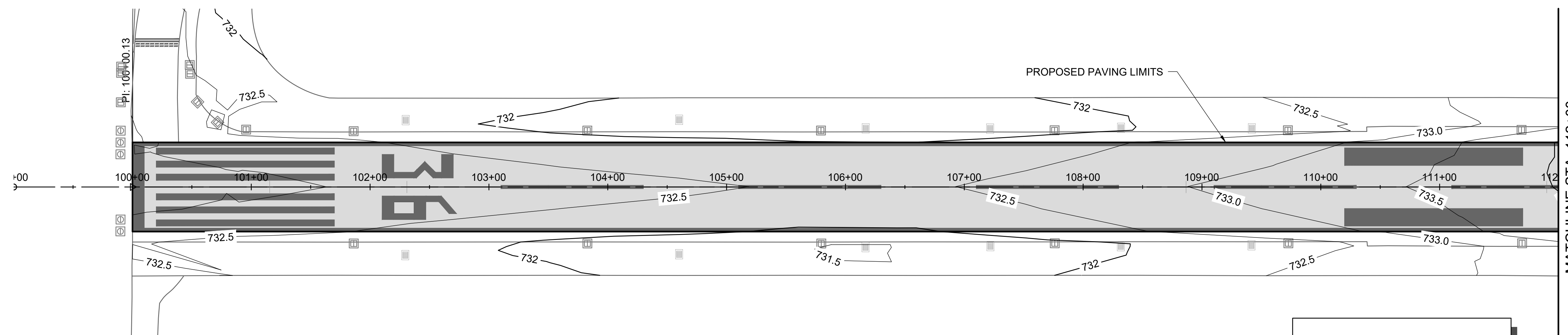
Contract No.: RA018

NO.	DATE	DESCRIPTION		
		DES	DWN	REV

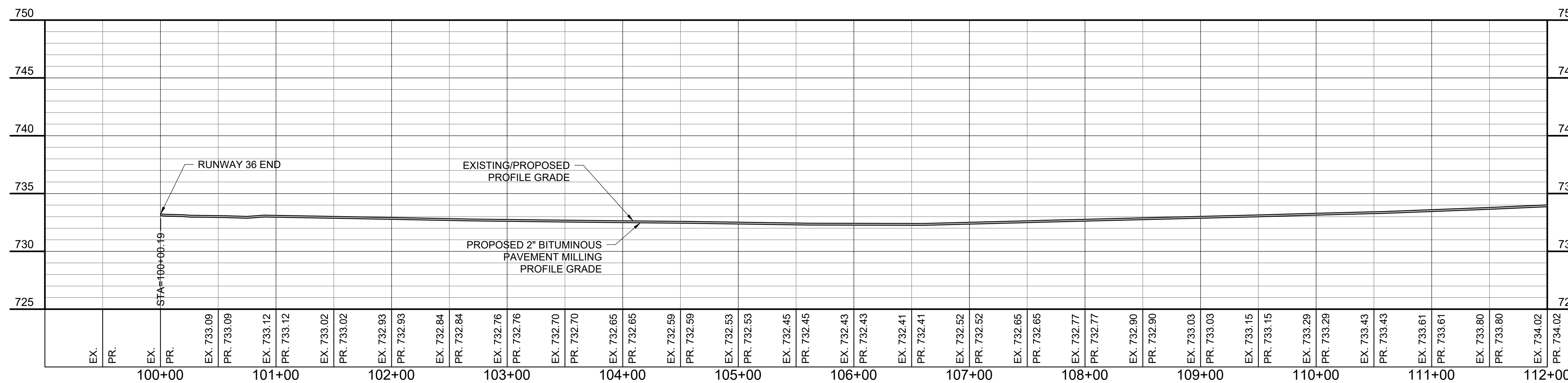
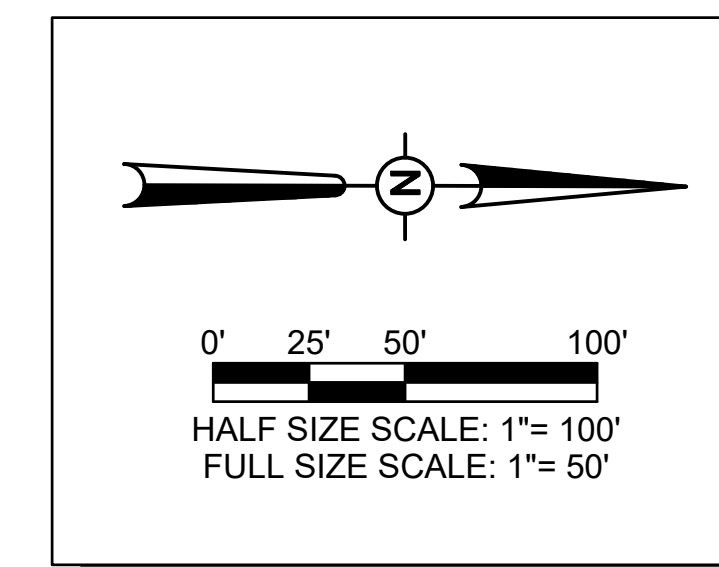
ISSUE: 5/13/2022
PROJECT NO: 21A0106
CAD FILE: C-101-PREP.DWG
DESIGN BY: CEM 5/5/2022
DRAWN BY: CEM 5/5/2022
REVIEWED BY: JMO 5/5/2022

SHEET TITLE

PAVEMENT
PREPARATION PLAN -
STA. 120+00 TO STA.
146+00



EXISTING	PROPOSED	LEGEND
		AR401614 - BITUMINOUS SURFACE COURSE - METHOD II, SUPERPAVE
		INLET
		AIRFIELD LIGHTING



REHABILITATE
 RUNWAY 18-36

IDA No: TIP-4959

SBGP No:
 3-17-SBGP-162/171/184

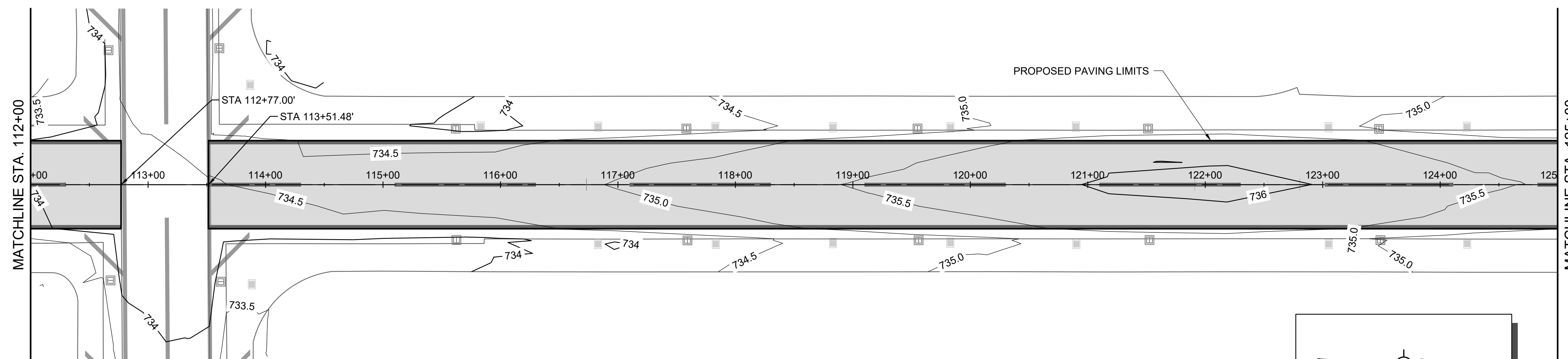
Contract No.: RA018

NO.	DATE	DESCRIPTION		
		DES	DWN	REV

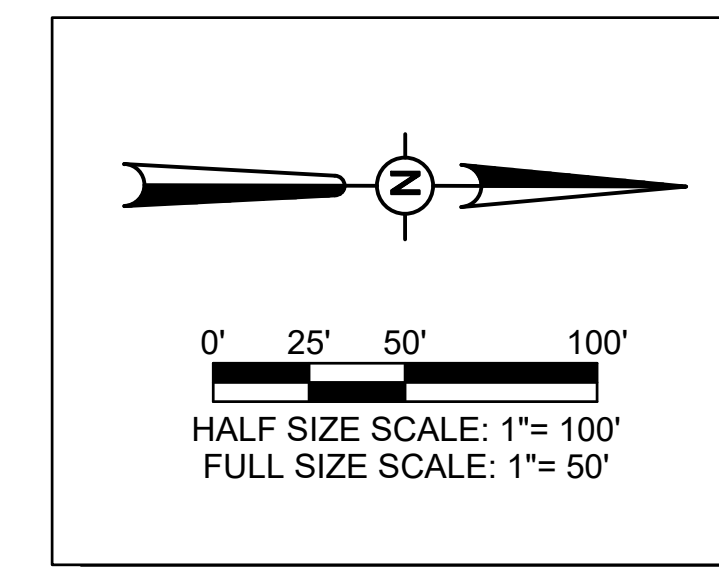
ISSUE: 5/13/2022
 PROJECT NO: 21A0106
 CAD FILE: C-701-PNP.DWG
 DESIGN BY: CEM 5/5/2022
 DRAWN BY: CEM 5/5/2022
 REVIEWED BY: JMO 5/5/2022

SHEET TITLE

PLAN & PROFILE -
 STA. 100+00 TO STA.
 112+00



EXISTING	PROPOSED	LEGEND
		AR401614 - BITUMINOUS SURFACE COURSE - METHOD II, SUPERPAVE
		INLET
		AIRFIELD LIGHTING

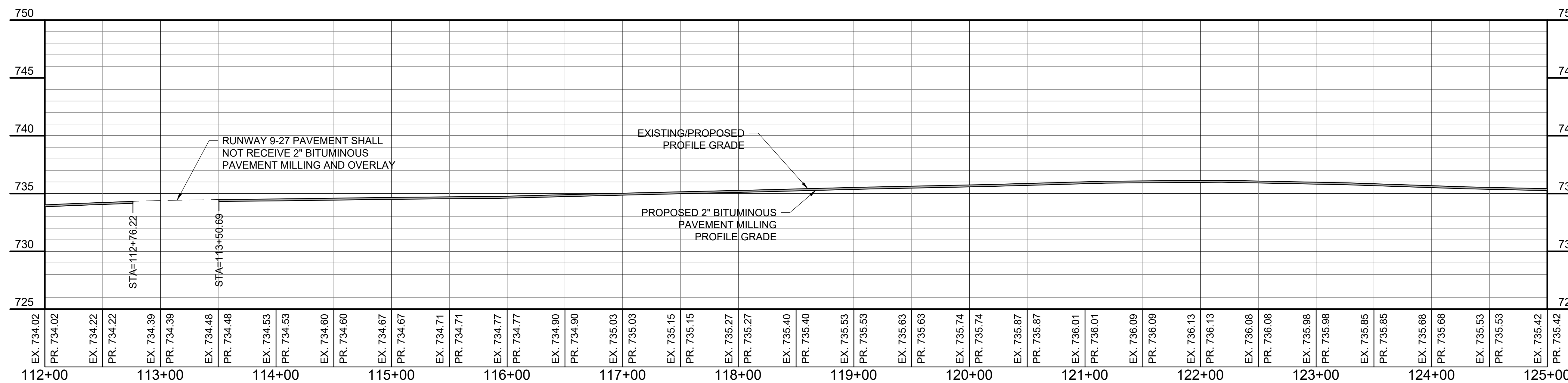


REHABILITATE
RUNWAY 18-36

IDA No: TIP-4959

SBGP No:
3-17-SBGP-162/171/184

Contract No.: RA018

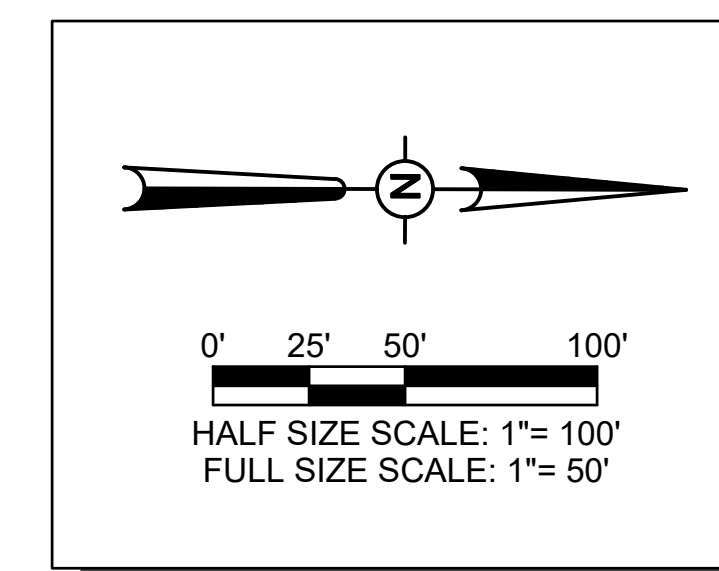
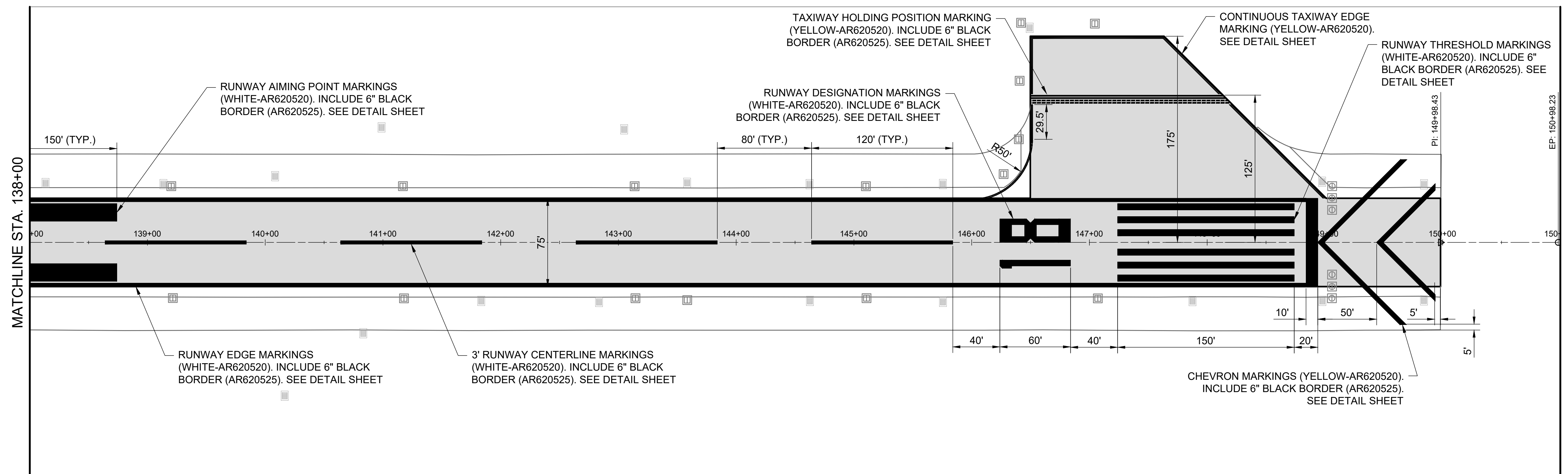
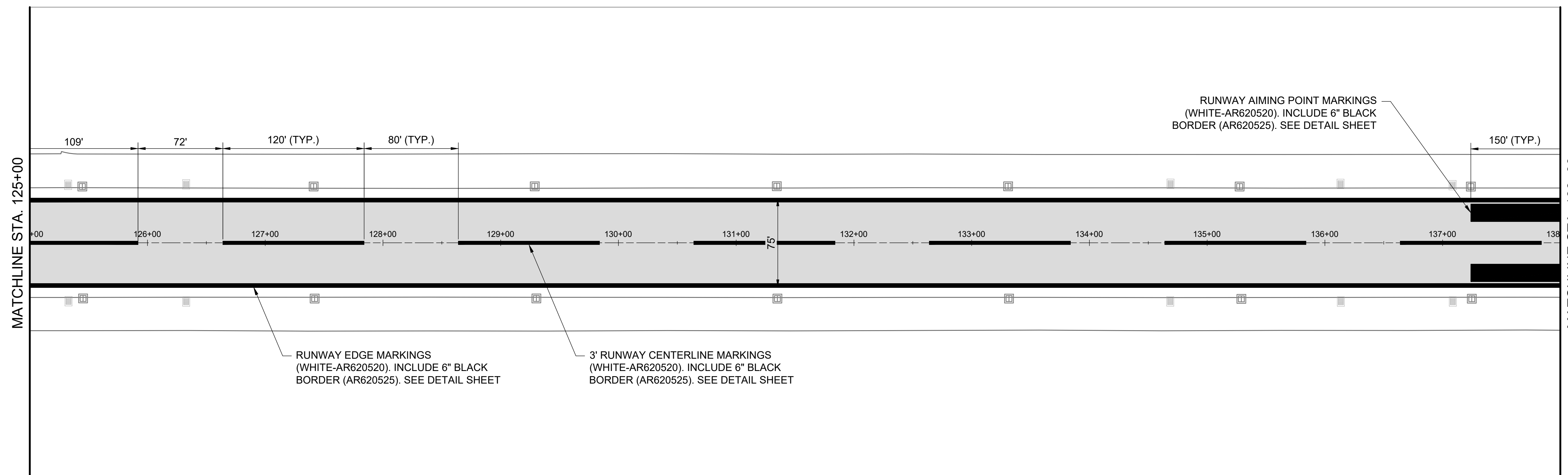


NO.	DATE	DESCRIPTION		
		DES	DWN	REV

ISSUE: 5/13/2022
PROJECT NO: 21A0106
CAD FILE: C-701-PNP.DWG
DESIGN BY: CEM 5/5/2022
DRAWN BY: CEM 5/5/2022
REVIEWED BY: JMO 5/5/2022

SHEET TITLE

PLAN & PROFILE -
STA. 112+00 TO STA.
125+00



REHABILITATE
RUNWAY 18-36

IDA No: TIP-4959

SBGP No:
3-17-SBGP-162/171/184

Contract No.: RA018

NO.	DATE	DESCRIPTION		
		DES	DWN	REV

ISSUE: 5/13/2022
PROJECT NO: 21A0106
CAD FILE: C-102-MRK.DWG
DESIGN BY: CEM 5/5/2022
DRAWN BY: CEM 5/5/2022
REVIEWED BY: JMO 5/5/2022

SHEET TITLE

MARKING PLAN - STA.
125+00 TO STA.
149+98.43

