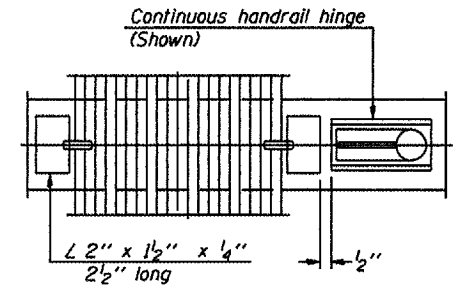
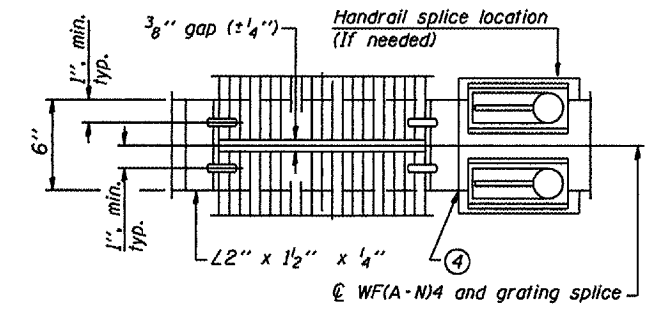


SECTION B-B

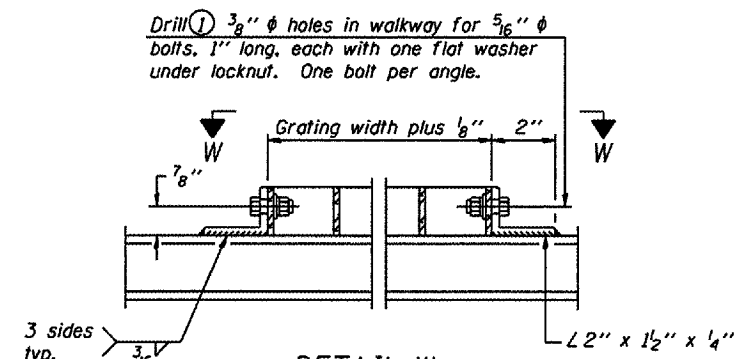


(CONTINUOUS WALKWAY GRATING)

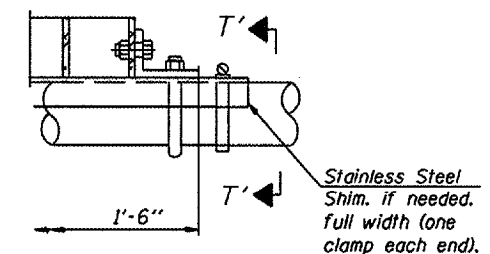


(AT WALKWAY GRATING SPLICE)

SECTION W-W

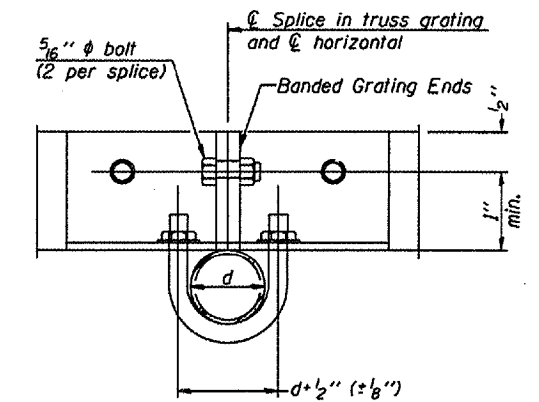


DETAIL W
(Walkway grating)

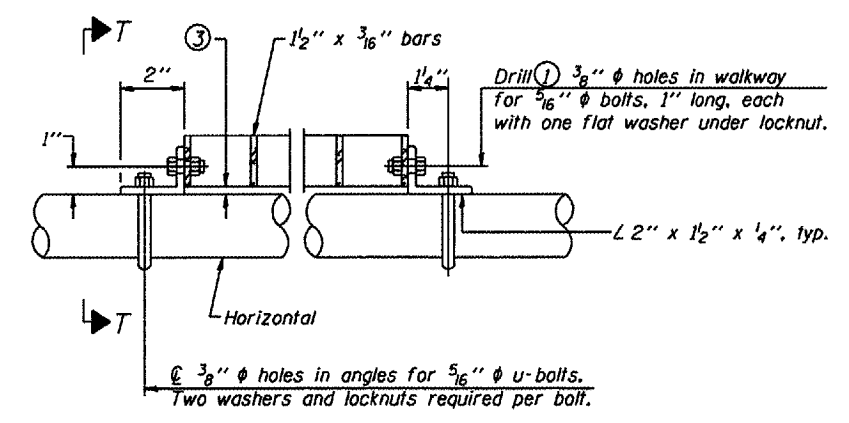


DETAIL T'
(Truss grating splice)

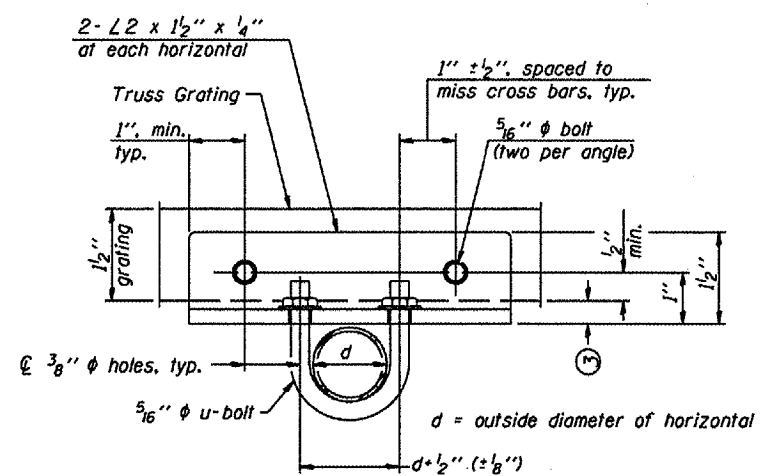
Details not shown same as Detail T.
Alternate materials may be used subject to the
Engineer's review and approval.



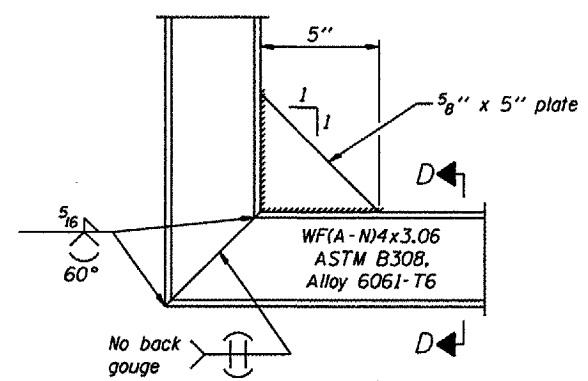
SECTION T'-T'



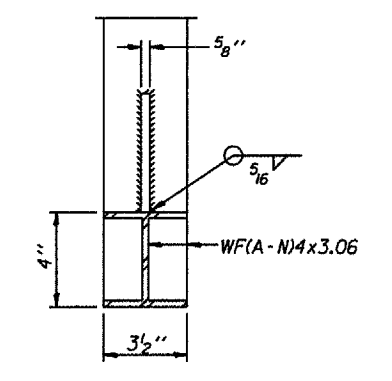
DETAIL T
(Truss grating at horizontal)



SECTION T-T'



DETAIL D
(See Detail P, Base Sheet OSC-A-8.)



SECTION D-D

NUMBER	REVISION	DATE

- Drilling holes in grating may be done in shop or field, based on Contractor's preference and subject to accurate alignment.
- When truss grating must be spliced, use suggested detail or other methods subject to the Engineer's review and approval. Locate splice to avoid interference between cross bars and bolt locations.
- Tube to grating gap may vary from 0 to 1/2", max. to align walkway, allow for camber, etc.
- If Handrail Joint present, weld angle to WF(A-N)4 and 1/4" extension bars. (See Base Sheet OSC-A-8)
- 1/2" x 1/2" x 2" welded to handrail posts to protect locations that contact grating.

Structure Number	Station	A	B	C	D

DESIGNED - _____ 20
 CHECKED - _____
 DRAWN - _____
 CHECKED - _____

EXAMINED _____
 PASSED _____
 ENGINEER OF BRIDGE DESIGN
 ENGINEER OF BRIDGES AND STRUCTURES

OSC-A-7 1-7-05

CANTILEVER SIGN STRUCTURES
WALKWAY DETAILS
ALUMINUM TRUSS & STEEL POST

District 2
Truss Repair & Replacement