

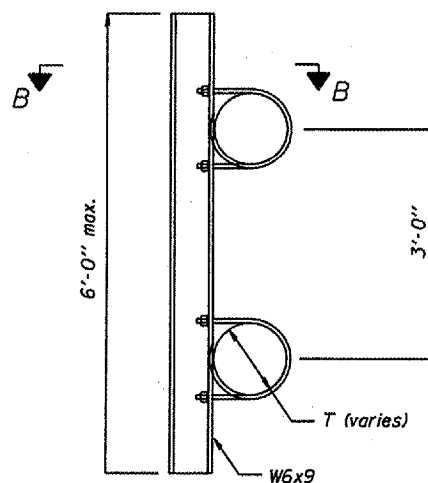
Span (Ft.)	B (Ft.)
Span \leq 65	12
65 < Span \leq 80	13
80 < Span \leq 100	14

FOUNDATIONS: The contract unit price for "Concrete Foundations" or "Drilled Shaft Concrete Foundations" shall include: All necessary excavation or drilling (except in rock); backfilling with excavated material; disposal of unsuitable or surplus material; formwork; and furnishing and placing the Class SI Concrete, reinforcement bars, conduit, anchor bolts, nuts, washers and ground rods complete in place.

The foundation details shown are based on common cohesive soil conditions (silty or sandy clay) with an average $Q_u \geq 1.25$ ton/Sq. ft. for all strata within and below the "B" portion of the foundation. " Q_u ", the soil's unconfined compressive strength, shall be determined by the Engineer from either hand penetrometer readings during construction or previous soil investigations at the site. For lower soil strengths or different soil types, the Engineer shall review pertinent data and determine any required revisions to the diameter, depth, reinforcement or configuration of the foundation. If changes are required by the Engineer, or if dimension "B" is increased more than 12 inches by the contractor, "as built" plans shall be prepared and submitted to the District Bureau of Operations for future reference.

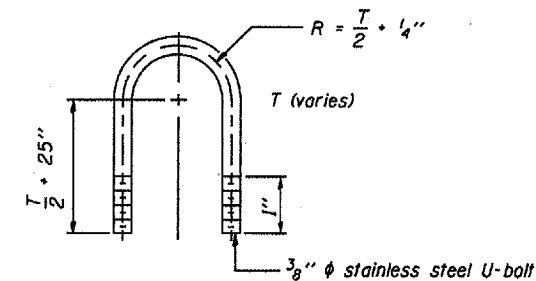
No sonotubes or decomposable forms shall be used below the lower conduit entrance. Permanent metal forms or other shielding may not be left in place below that elevation without the Engineers' written permission. Excavations shall be dewatered before concrete placement if directed by the Engineer at no additional cost.

Concrete shall be placed monolithically, without construction joints.



SIGN MOUNTING BRACKET

3/8" ϕ stainless steel U-bolt (Provide 2 stainless steel washers and 2 hex locknuts per bolt.) 2 bolts required per bracket. (See U-Bolt Detail)



U-BOLT DETAIL
(Typical)

SECTION B-B
6'-0" maximum spacing.
2'-0" maximum sign overhang beyond end bracket.

DUAL MONOTUBE SIGN STRUCTURE

District 2
Truss Repair & Replacement

DESIGNED	20
CHECKED	EXAMINED
DRAWN	PASSED
CHECKED	ENGINEER OF BRIDGES AND STRUCTURES