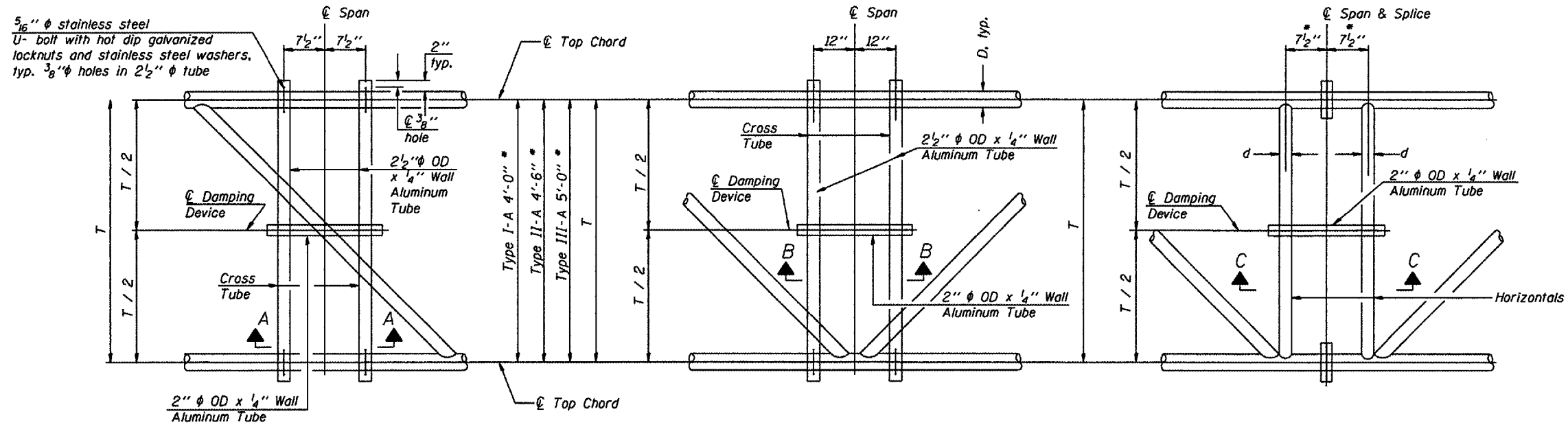


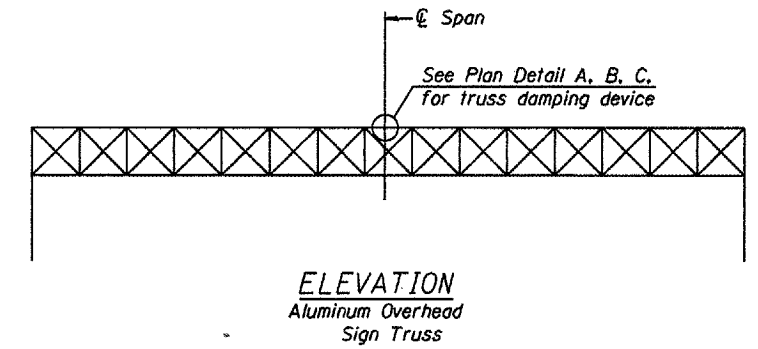
Center of horizontal to center of splice dimension may vary. Verify before drilling holes in mounting tube.



PLAN DETAIL "A"  
Span between Panel Points

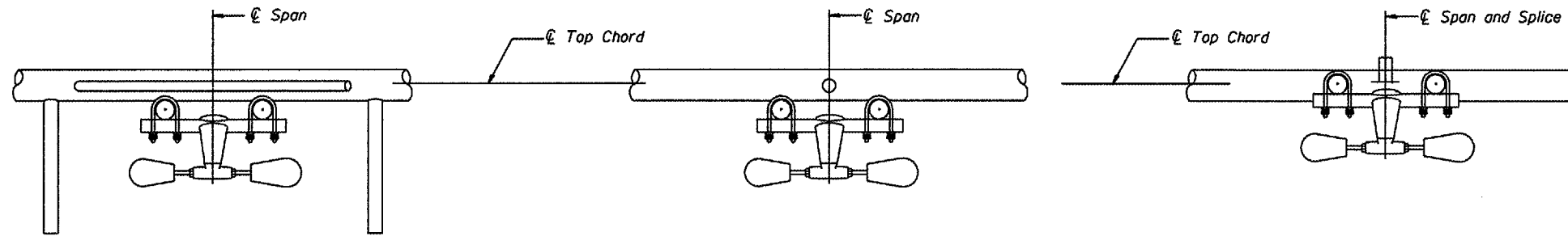
PLAN DETAIL "B"  
Span at Panel Point

PLAN DETAIL "C"  
Span at Chord Splice



ELEVATION  
Aluminum Overhead  
Sign Truss

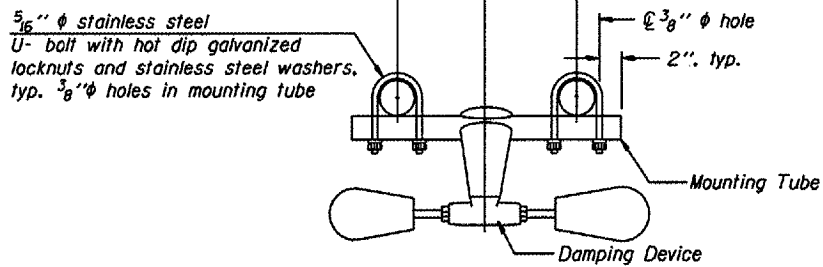
**NOTES**  
Damper: One damper per truss.  
(31 lbs. Stockbridge-Type Aluminum)  
Cost included in Overhead Sign Structure...  
Materials: Aluminum tubes shall be ASTM B221 alloy 6061 temper T6. Cost included in Overhead Sign Structure...



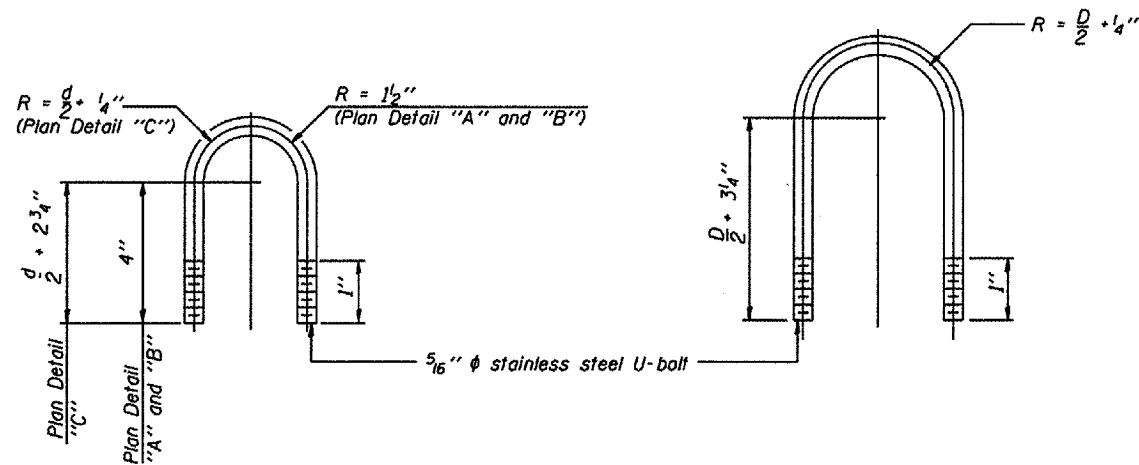
SECTION A-A

SECTION B-B

SECTION C-C



TRUSS DAMPING  
DEVICE CONNECTION DETAIL  
(Typical)



DAMPING DEVICE MOUNTING  
TUBE U-BOLT DETAIL  
(Typical)

TOP CHORD TO CROSS TUBE  
U-BOLT DETAIL  
(Typical - Detail "A" and "B")

This sheet applies to the following structures:  
Structure No. 3S057I074L134.8

DESIGNED -	20
CHECKED -	EXAMINED
DRAWN -	PASSED
CHECKED -	ENGINEER OF BRIDGES AND STRUCTURES