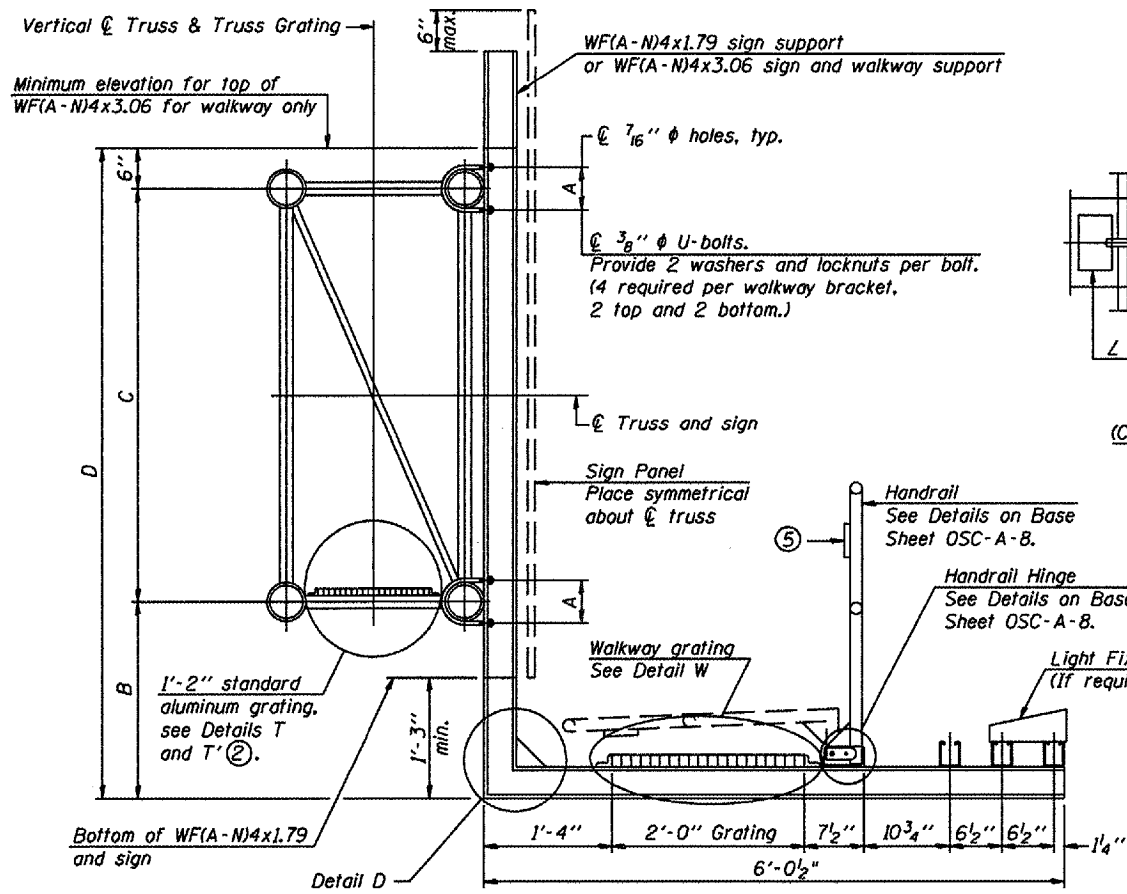
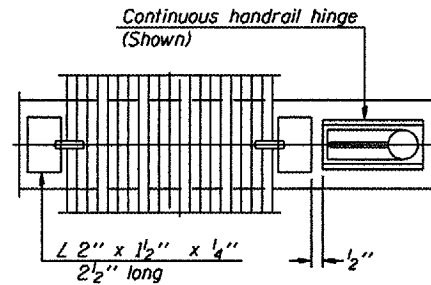


STATE OF ILLINOIS
DEPARTMENT OF TRANSPORTATION

Various Routes
OVD SIN STR REP & REPL 2005-12
Various Counties
Sheet 55 of 82
Contract Number 44872

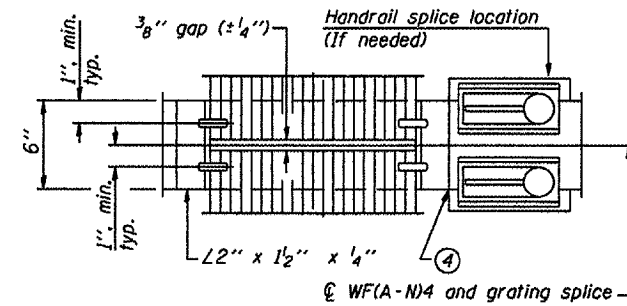


SECTION B-B



(CONTINUOUS WALKWAY GRATING)

SECTION W-W

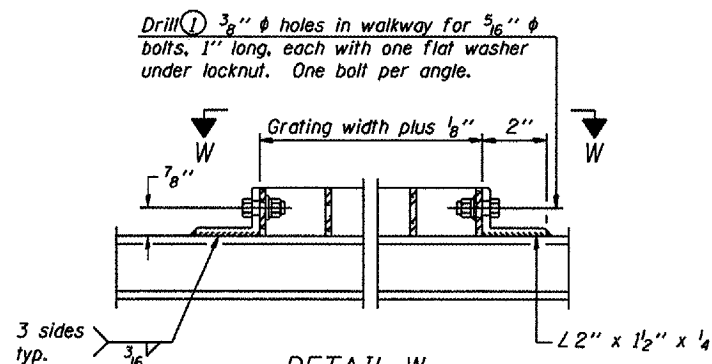


(AT WALKWAY GRATING SPLICE)

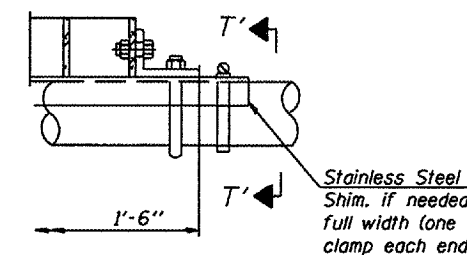
SPECIFICATIONS FOR STANDARD ALUMINUM GRATING
Main Bearing Bars (MBB) shall be 3/16" x 1 1/2" on 1 3/16" centers and conform to ASTM B211 Alloy 6061-T6.
Cross bars (CB) shall be 3/16" x 1 1/2" on 4" centers and conform to ASTM B221 Alloy 6063-T5 or 6061-T6.

OR

Aluminum Grating with modified "I" sections for main bearing bars shall meet the following requirements:
Main bars shall conform to ASTM B221 Alloy 6061-T6 and have a minimum section modulus equal to 0.0705 in.³ per bar, a depth of 1 1/2", spaced on 1 3/16" centers.
Cross bars shall conform to ASTM B221 Alloy 6063-T5 or T-42 and spaced on 4" centers.

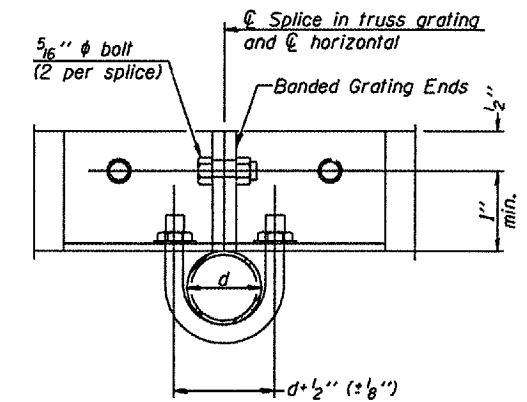


DETAIL W
(Walkway grating)

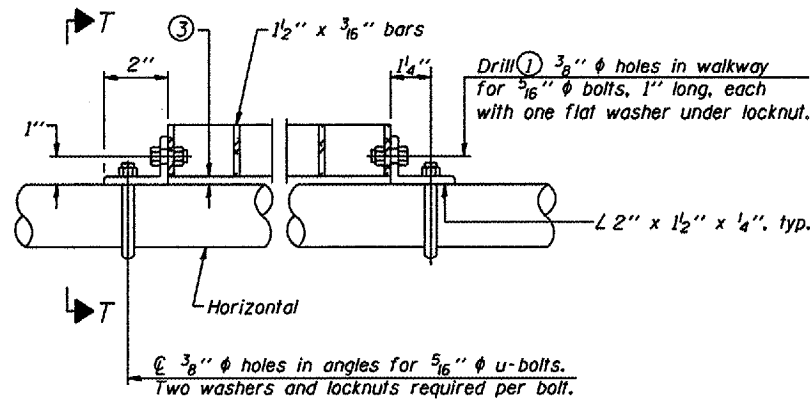


DETAIL T'

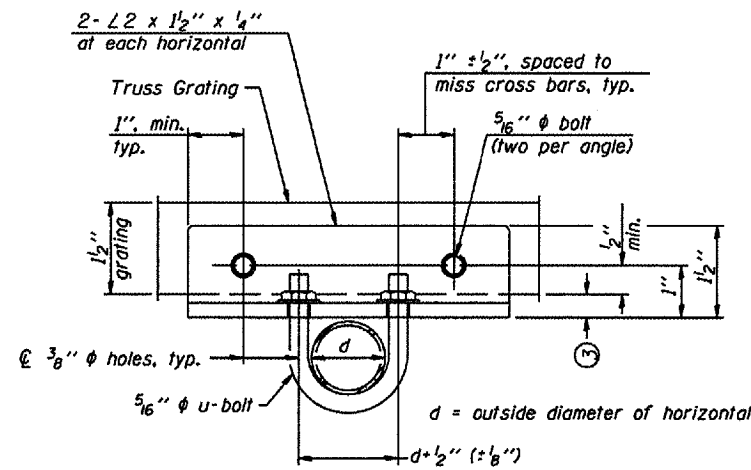
(Truss grating splice)
Details not shown same as Detail T.
Alternate materials may be used subject to the Engineer's review and approval.



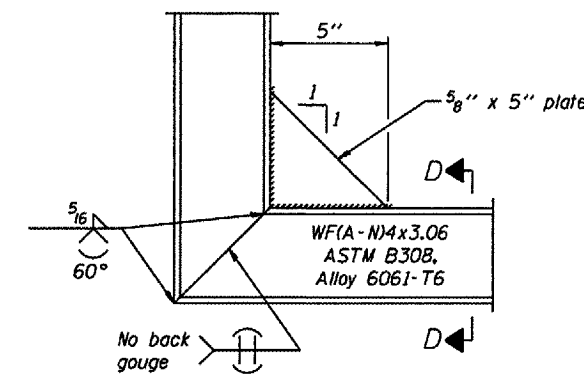
SECTION T-T'



DETAIL T
(Truss grating at horizontal)

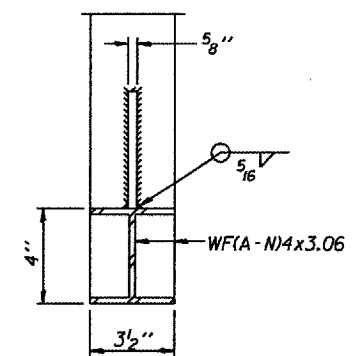


SECTION T-T



DETAIL D

(See Detail P, Base Sheet OSC-A-8.)



SECTION D-D

NUMBER	REVISION	DATE

DESIGNED -	20
CHECKED -	EXAMINED
DRAWN -	PASSED
CHECKED -	ENGINEER OF BRIDGES AND STRUCTURES

OSC-A-7 1-7-05

- Drilling holes in grating may be done in shop or field, based on Contractor's preference and subject to accurate alignment.
- When truss grating must be spliced, use suggested detail or other methods subject to the Engineer's review and approval. Locate splice to avoid interference between cross bars and bolt locations.
- Tube to grating gap may vary from 0 to 1/2", max. to align walkway, allow for camber, etc.
- If Handrail Joint present, weld angle to WF(A-N)4 and 1/4" extension bars. (See Base Sheet OSC-A-8)
- ϕ 1/8" x 1/2" x 2" welded to handrail posts to protect locations that contact grating.

Structure Number	Station	A	B	C	D
<i>Reuse existing walkway support brackets.</i>					

CANTILEVER SIGN STRUCTURES
WALKWAY DETAILS
ALUMINUM TRUSS & STEEL POST

District 4
Truss Repair & Replacement