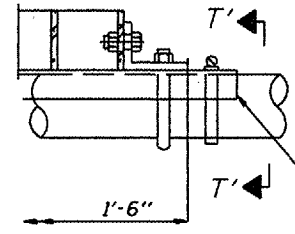
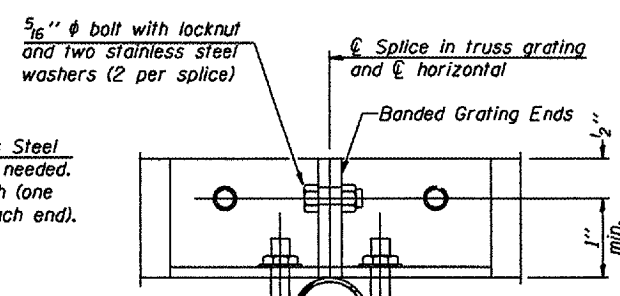


DETAIL W
(Walkway grating)

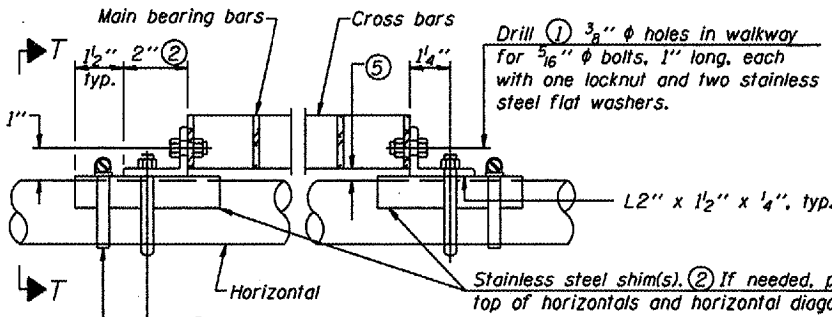


DETAIL T'

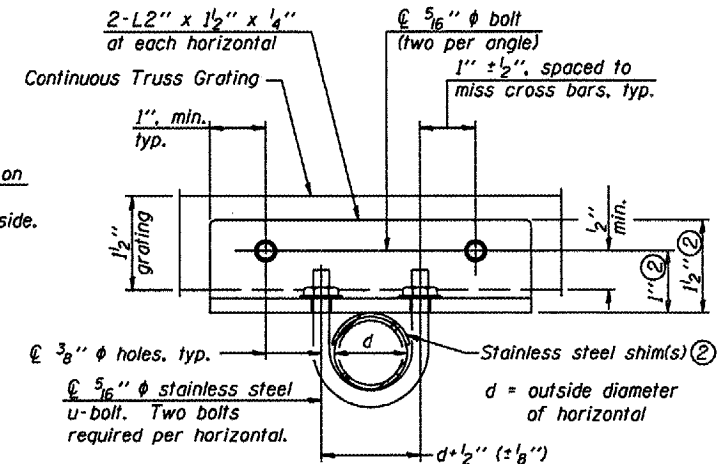
(Truss grating splice)
Details not shown same as Detail T. Alternate materials may be used subject to the Engineer's review and approval.



SECTION T'-T'



DETAIL T
(Continuous Truss grating)



SECTION T-T

SPECIFICATIONS FOR STANDARD ALUMINUM GRATING

Main Bearing Bars shall be 3/8" x 1 1/2" on 1 3/8" centers and conform to ASTM B221 Alloy 6061-T6.
Cross bars shall be 3/8" x 1 1/2" on 4" centers and conform to ASTM B221 Alloy 6063-T5 or 6061-T6.

OR

Aluminum Grating with modified "T" sections for main bearing bars shall meet the following requirements:
Main bars shall conform to ASTM B221 Alloy 6061-T6 and have a minimum section modulus equal to 0.0705 in.³ per bar, a depth of 1 1/2", spaced on 1 3/8" centers.
Cross bars shall conform to ASTM B221 Alloy 6063-T5 or T-42 and spaced on 4" centers.

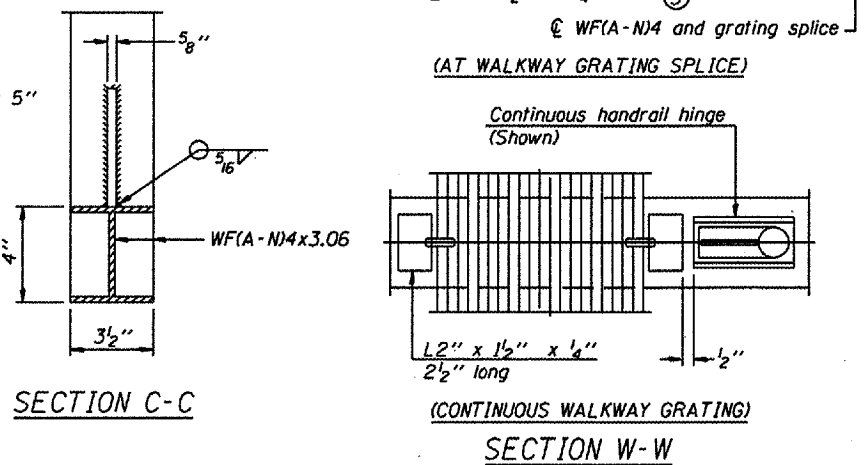
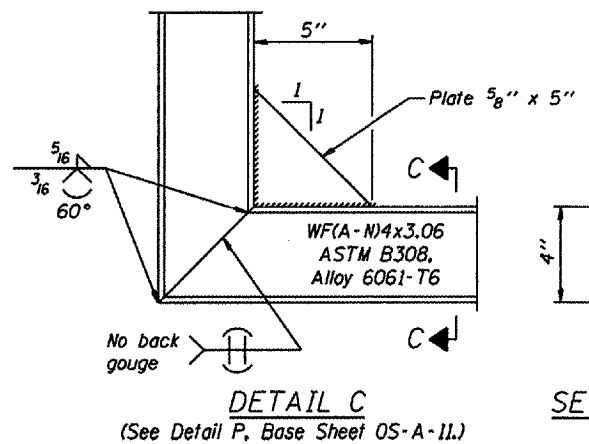
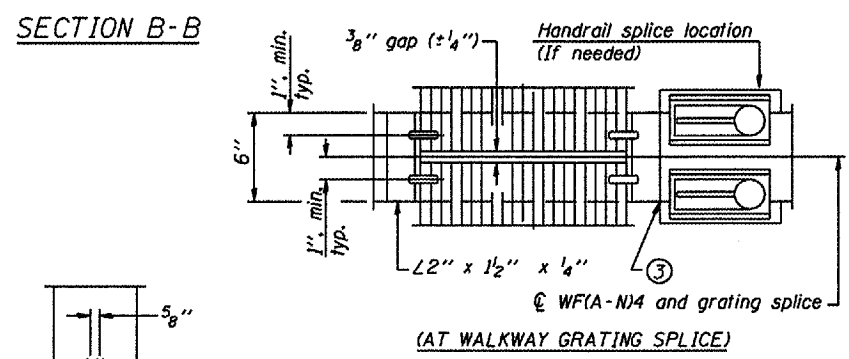
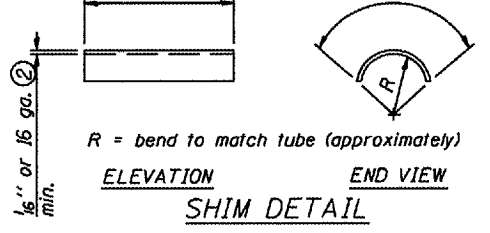
This Sheet For Information Only 5

Structure Number	Station	A	B	C	D

Reuse Existing Walkway and Walkway Support Brackets

OVERHEAD SIGN STRUCTURES
ALUMINUM WALKWAY DETAILS

District 6
Truss Repair & Replacement



DESIGNED		20
CHECKED		ENGINEER OF BRIDGE DESIGN
DRAWN		ENGINEER OF BRIDGES AND STRUCTURES
CHECKED		

NUMBER	REVISION	DATE