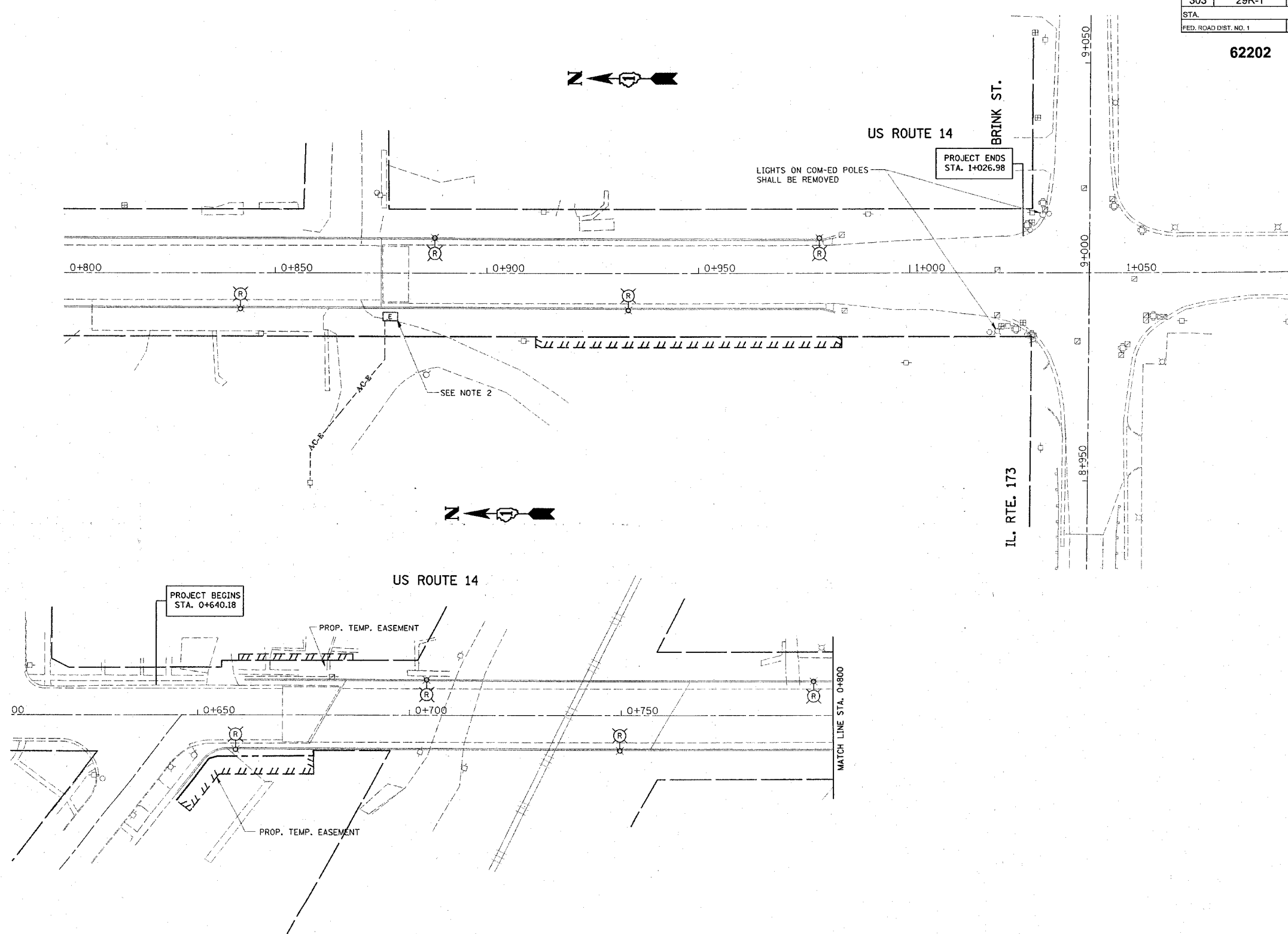
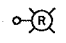




REF-ELIGHT1
REF-ELIGHT2

FAP ROUTE	SECTION	COUNTY	TOTAL SHEETS	SHEET NO.
303	29R-T	McHENRY	88	39A
STA.	TO STA.		FED. AID PROJECT	
FED. ROAD DIST. NO. 1	ILLINOIS		D-91-190-01	

62202



-  EXISTING LIGHTING UNIT TO BE REMOVED
-  EXISTING JUNCTION BOX TO BE REMOVED
-  EXISTING AERIAL SERVICE FEED TO BE REMOVED

NOTES:

1. THE CONTRACTOR SHALL DISCONNECT AND REMOVE THE WHOLE LIGHTING SYSTEM AS SHOWN ON THE PLANS AND AS DIRECTED BY THE ENGINEER PRIOR TO THE START OF CONSTRUCTION.
2. THE CONTRACTOR SHALL DISCONNECT AND REMOVE THE EXISTING AERIAL SERVICE FEED AND JUNCTION BOX ATTACHED TO STRUCTURE. THIS WORK SHALL BE PAID FOR UNDER REMOVAL OF EXISTING LIGHTING UNIT, NO SALVAGE PAY ITEM.

REVISIONS	
NAME	DATE

ILLINOIS DEPARTMENT OF TRANSPORTATION
**U.S. RTE. 14
 OVER MOKELER CREEK
 LIGHTING REMOVAL PLANS**
 DRAWN BY AC
 CHECKED BY
 DATE 3/11/2005