

STATE OF ILLINOIS  
DEPARTMENT OF TRANSPORTATION  
DIVISION OF HIGHWAYS

PLANS FOR PROPOSED  
HIGHWAY

F.A.P. 066 – (NORTHWEST HIGHWAY)  
U.S. ROUTE 14 OVER LAWRENCE CREEK  
SECTION: 21 (B&G) R  
BOX CULVERT REPLACEMENTS  
PROJECT: *BRF-0066(007)*  
MCHENRY COUNTY  
C-91-053-02

Project located  
in CHEMUNG  
TOWNSHIP

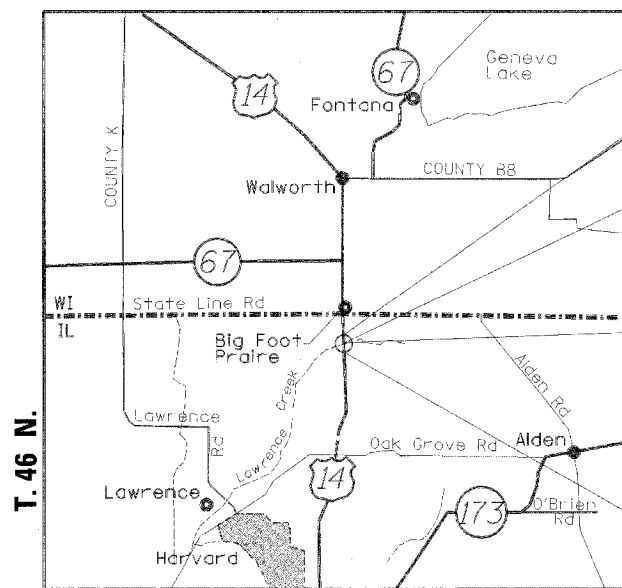
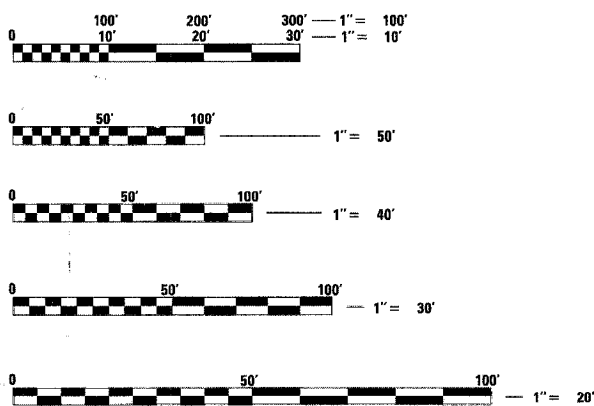
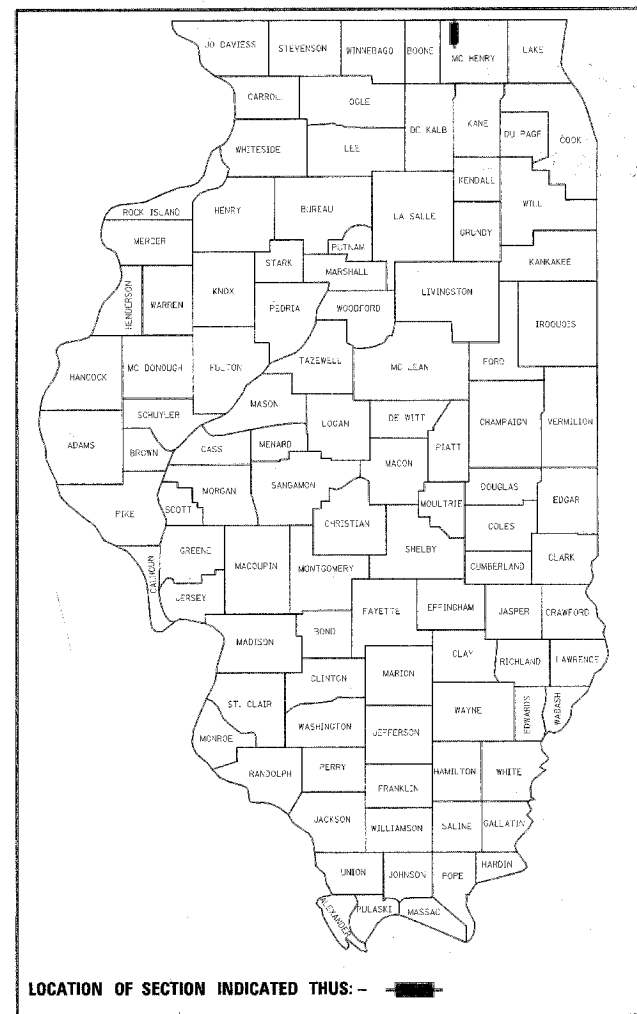
FOR INDEX OF SHEETS, SEE SHEET NO. 2

TRAFFIC DATA  
2004 ADT: 6750 VEHICLES  
2024 ADT: 8100 VEHICLES  
2024 ADTT (SU) = 259  
2024 ADTT (MU) = 381

POSTED SPEED LIMIT  
55 mph

DESIGN DESIGNATION

6750(2004) OTHER PRINCIPAL ARTERIAL 2.52 (COMPOSITE-20)



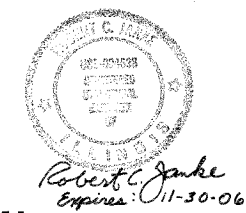
Project Ends  
Sta. 122 + 10  
Improvement Ends  
Sta. 115 + 10

Project Description  
U.S. ROUTE 14 OVER LAWRENCE  
CREEK CULVERT STA. 110+00  
REMOVE & REPLACE EXISTING  
BOX CULVERT.  
EXISTING S. N. : 056-2000  
NEW S. N. : 056-0074

U.S. ROUTE 14 OVER LAWRENCE  
CREEK BYPASS STA. 107+00 REMOVE  
EXISTING CIRCULAR CULVERT & BOX  
CULVERT. REPLACE WITH A BOX  
CULVERT.  
EXISTING S. N. : NONE  
NEW S. N. : 056-0075

Improvement Begins  
Sta. 104 + 00  
Project Begins  
Sta. 97 + 00

R. 5 E.  
CHEMUNG TOWNSHIP  
LOCATION MAP  
SCALE: 1:30000



SEAL

STATE OF ILLINOIS  
DEPARTMENT OF TRANSPORTATION  
DIVISION OF HIGHWAYS

SUBMITTED *February 14, 20 05*  
*Dina O'Keefe/PP*  
DISTRICT ENGINEER

*March 25, 20 05*  
*Mike Hine/PP*  
ENGINEER OF DESIGN AND ENVIRONMENT

*March 25, 20 05*  
*Victor Mader/PP*  
DIRECTOR, DIVISION OF HIGHWAYS

PRINTED BY THE AUTHORITY  
OF THE STATE OF ILLINOIS

FULL SIZE PLANS HAVE BEEN PREPARED USING STANDARD  
ENGINEERING SCALES. REDUCED SIZED PLANS WILL NOT  
CONFORM TO STANDARD SCALES. IN MAKING MEASUREMENTS  
ON REDUCED PLANS, THE ABOVE SCALES MAY BE USED.

J.U.L.I.E.  
JOINT UTILITY LOCATION INFORMATION FOR EXCAVATION  
1-800-892-0123

GROSS AND NET LENGTH OF PROJECT = 1110 ft = 0.210 mi

CONTRACT NO. 62391

**Applied Technologies**  
CONSULTING ENGINEERS  
300 NORTH MILWAUKEE AVE. SUITE E  
LAKE VILLA, ILLINOIS 60046  
PHONE: 847 265-7325  
FAX: 847-265-7327

DIST. 1 DESIGN / CONSULTANT SERVICES PROJECT MANAGER: CATHERINE KUBLE (847) 705-4269

3287COV