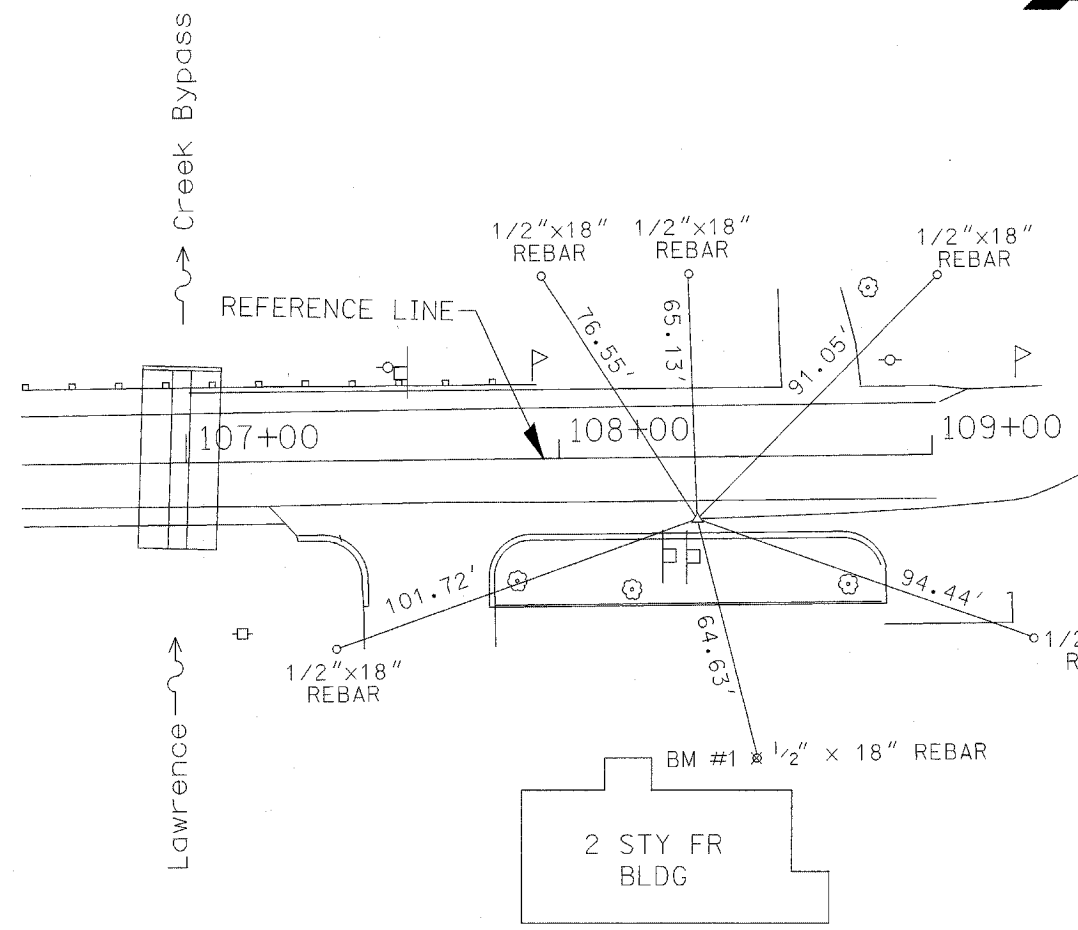
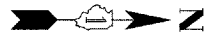
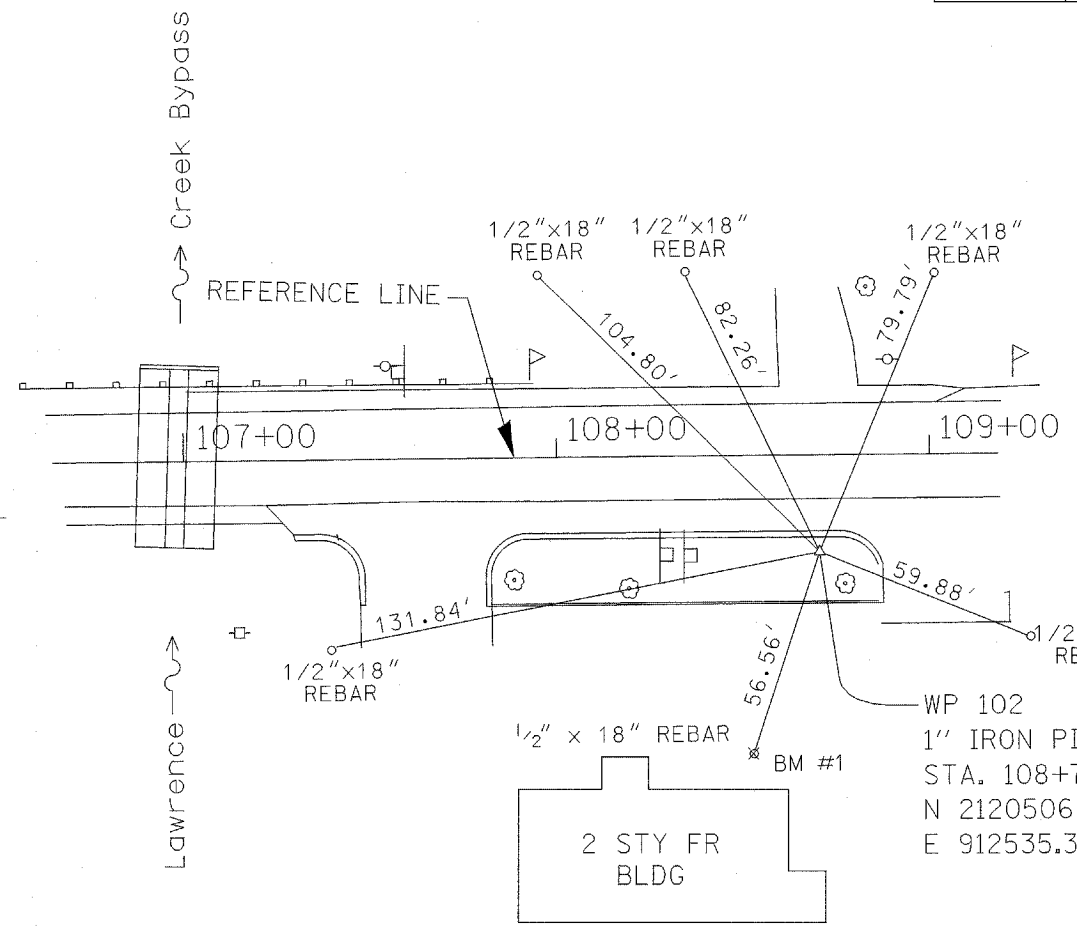


F.A.P. RTE.	SECTION	COUNTY	TOTAL SHEETS	SHEET NO.
066	21 (B&G) R	McHENRY	66	15
STA.		TO STA.		
FED. ROAD DIST. NO.		ILLINOIS FED. AID PROJECT		

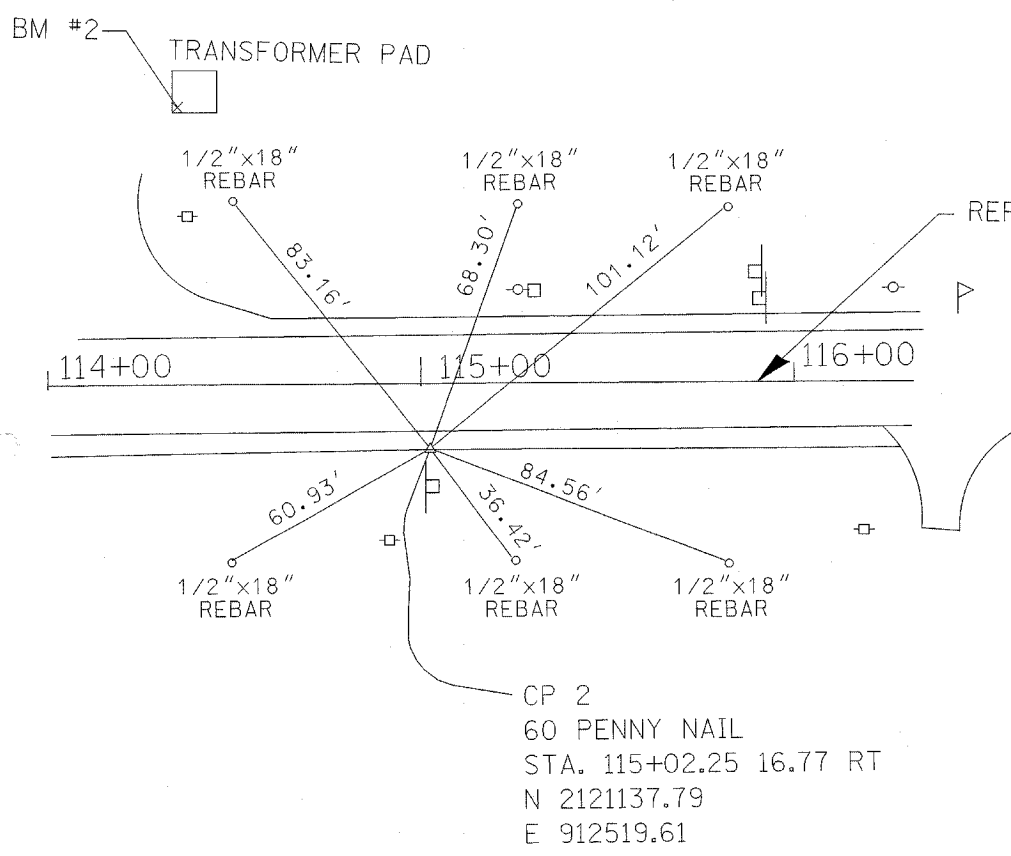
#62391



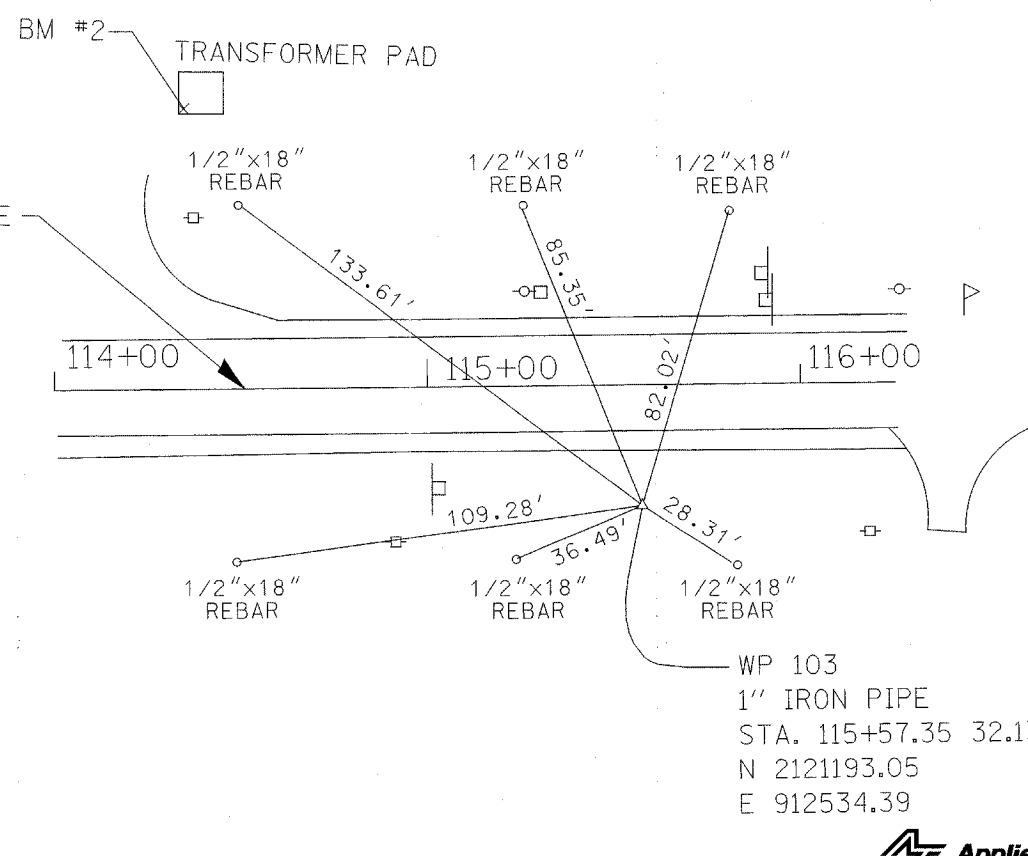
CP 1  
PK NAIL  
STA. 108+36.86 16.65 RT  
N 2120472.44  
E 912526.54



WP 102  
1" IRON PIPE  
STA. 108+70.33 25.85 RT  
N 2120506.01  
E 912535.38



CP 2  
60 PENNY NAIL  
STA. 115+02.25 16.77 RT  
N 2121137.79  
E 912519.61



WP 103  
1" IRON PIPE  
STA. 115+57.35 32.13 RT  
N 2121193.05  
E 912534.39

**BENCHMARK**  
BM #1 CHISELED "X" IN WEST FACE OF CONCRETE WALK,  
11.04' SOUTHWEST OF NORTHWEST CORNER OF CONCRETE  
FOUNDATION FOR TAVERN.  
STA. 108+50, 85' RT EL. 959.70  
  
BM #2 CHISELED "X" AT SOUTHEAST CORNER OF TRANSFORMER PAD.  
STA. 114+35, 75' LT EL. 957.37

REVISIONS	
NAME	DATE

ILLINOIS DEPARTMENT OF TRANSPORTATION  
U.S. ROUTE 14 OVER LAWRENCE CREEK  
**ALIGNMENT, TIES & BENCHMARKS**

SCALE: N.T.S.  
DATE: 4-13-04  
DRAWN BY: CLG  
CHECKED BY: JJD



3287TIE.DGN