

**LEGEND:**

- ⊗ TREE REMOVAL
- ⊙ TREE TRUNK PROTECTION
- ▨ TREE REMOVAL
- ▨ REMOVE DRIVES

1. PR. TRAFFIC BARRIER TERMINAL, TYPE 1 SPECIAL (FLARED) 12:1 FLARE STA. 106+10 RT, STA. 107+90 LT AND STA. 110+93 LT TAPER POINTS ARE AT 106+65 RT, 107+35 LT, AND 110+38 LT
2. PR. TRAFFIC BARRIER TERMINAL, TYPE 1 SPECIAL (TANGENT) STA. 105+95 LT, STA. 107+47 RT, STA. 108+13 RT, STA. 108+92 LT AND STA. 111+08 RT
3. PR. STEEL PLATE BEAM GUARD RAIL, TYPE B STA. 105+95 TO STA. 107+90 LT, STA. 106+10 TO STA. 107+47 RT, STA. 108+13 TO STA. 111+08 RT AND STA. 108+92 TO STA. 110+93 LT (STA. 105+95 TO STA. 106+20 LT. WILL BE INSTALLED AFTER STAGE II MOT IS COMPLETE)

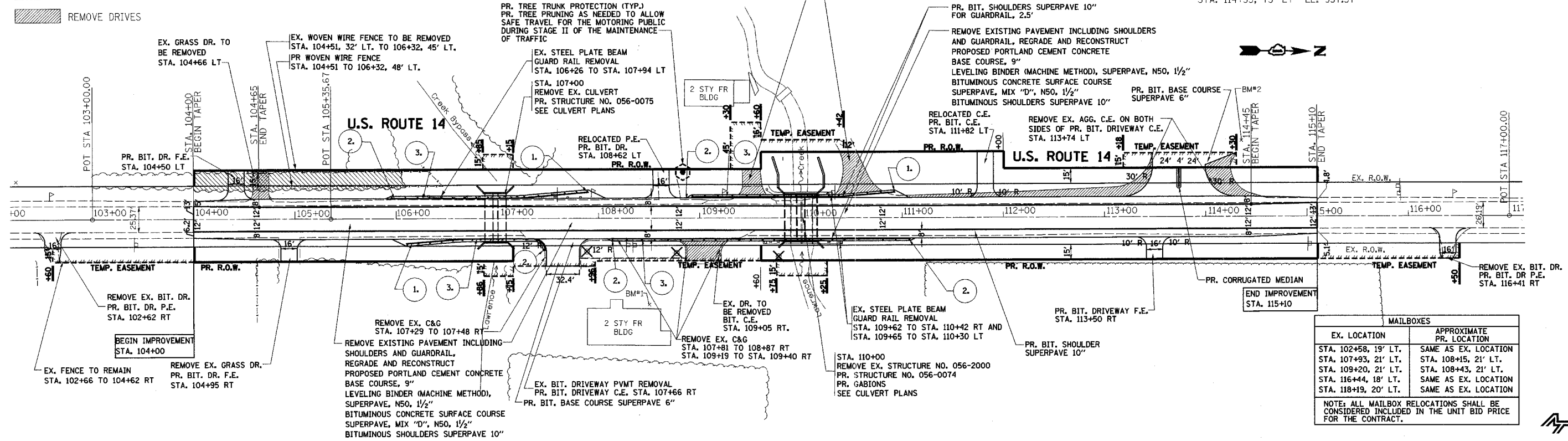
**BENCHMARK**

BM #1 CHISELED "X" IN WEST FACE OF CONCRETE WALK, 11.0' SOUTHWEST OF NORTHWEST CORNER OF CONCRETE FOUNDATION FOR TAVERN.  
STA. 108+50, 85' RT EL. 959.70

BM #2 CHISELED "X" AT SOUTHEAST CORNER OF TRANSFORMER PAD.  
STA. 114+35, 75' LT EL. 957.37

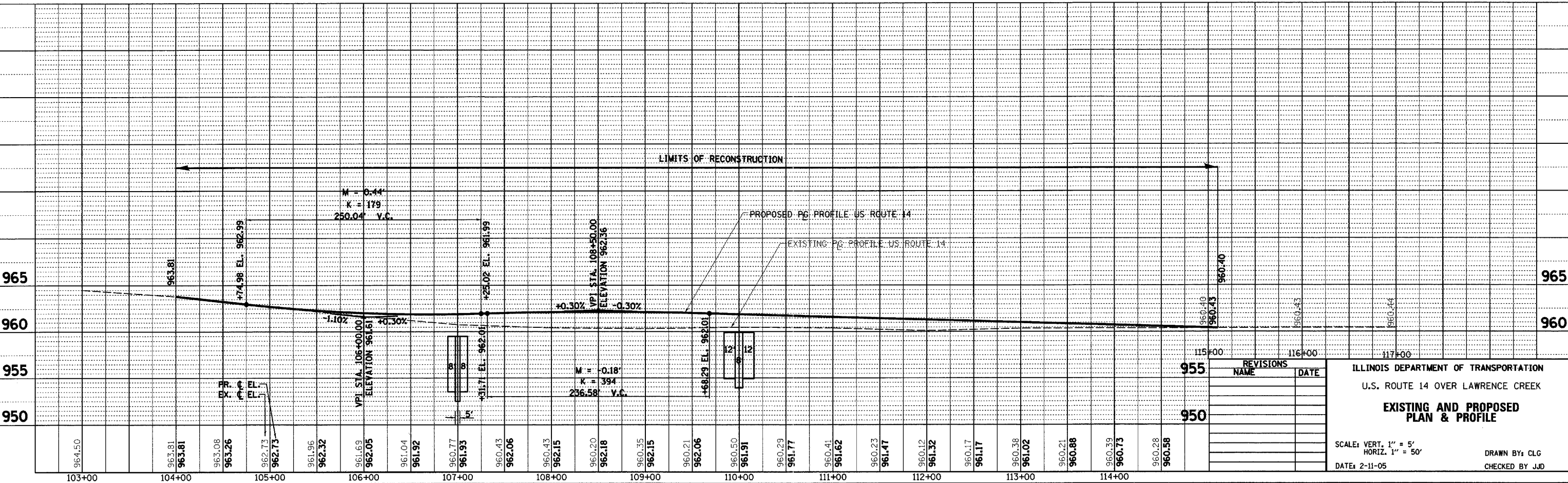
F.A.P. RTE.	SECTION	COUNTY	TOTAL SHEETS	SHEET NO.
066	21 (B&G) R	MCHENRY	66	16
STA. 104+00 TO STA. 115+10		ILLINOIS FED. AID PROJECT		

#62391



MAILBOXES	
EX. LOCATION	APPROXIMATE PR. LOCATION
STA. 102+58, 19' LT.	SAME AS EX. LOCATION
STA. 107+93, 21' LT.	STA. 108+15, 21' LT.
STA. 109+20, 21' LT.	STA. 108+43, 21' LT.
STA. 116+44, 18' LT.	SAME AS EX. LOCATION
STA. 118+19, 20' LT.	SAME AS EX. LOCATION

NOTE: ALL MAILBOX RELOCATIONS SHALL BE CONSIDERED INCLUDED IN THE UNIT BID PRICE FOR THE CONTRACT.



REVISIONS	
NAME	DATE

ILLINOIS DEPARTMENT OF TRANSPORTATION  
U.S. ROUTE 14 OVER LAWRENCE CREEK  
**EXISTING AND PROPOSED PLAN & PROFILE**

SCALE: VERT. 1" = 5'  
HORIZ. 1" = 50'

DATE: 2-11-05  
DRAWN BY: CLG  
CHECKED BY: JJD