

F.A.P. RTE.	SECTION	COUNTY	TOTAL SHEETS	SHEET NO.
066	21 (B&G) R	MCHENRY	66	24
STA.	103+00	TO STA.	115+00	
FED. ROAD DIST. NO.	ILLINOIS	FED. AID PROJECT		

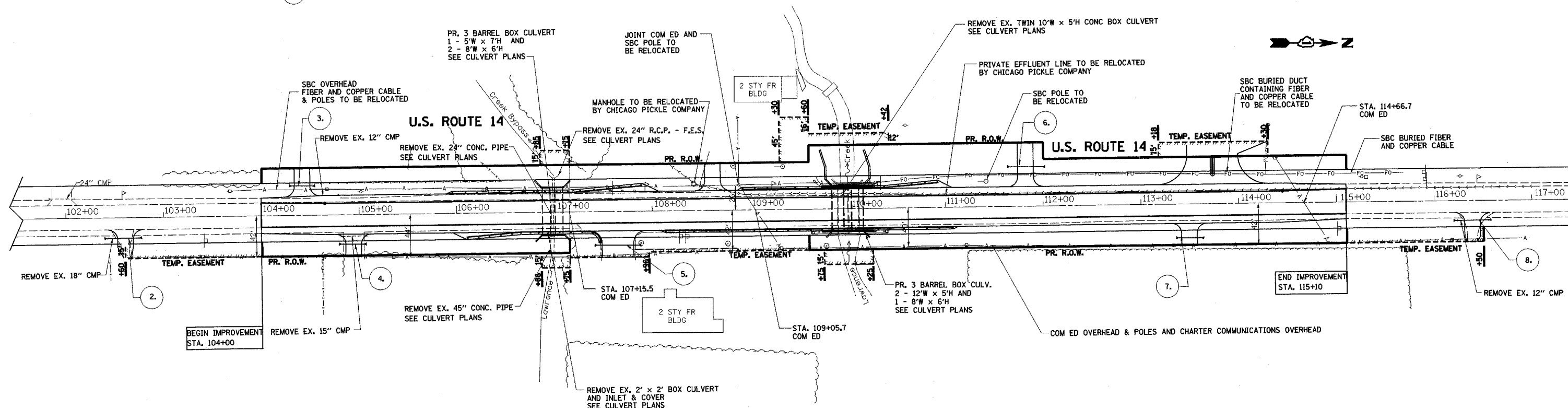
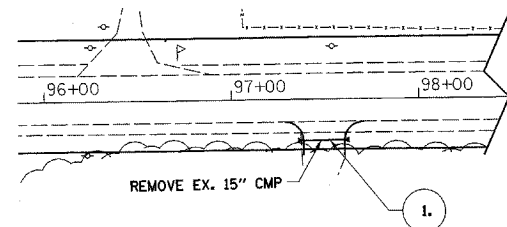
#62391

PIPE CULVERT TYPE 1, CORRUGATED STEEL OR ALUMINUM

NO.	CL STA.	OFFSET	DIAMETER	LENGTH (FT)	FLOW	INLET	OUTLET
1.	97+50	22 RT	18"	24	SOUTH	972.56	972.23
2.	102+62	21 RT	18"	38	NORTH	962.40	962.20
3.	104+50	30 LT	18"	26	NORTH	960.22	960.00
4.	105+00	30 RT	18"	28	NORTH	959.95	959.65
5.	107+66	33 RT	18"	44	SOUTH	958.89	958.41
6.	111+82	40 LT	18"	34	SOUTH	956.65	956.39
7.	113+50	30 RT	18"	24	SOUTH	957.39	957.15
8.	116+41	20 RT	18"	38	SOUTH	958.41	958.03

NOTE:

ALL CULVERTS INCLUDE 2 STEEL END SECTIONS



REVISIONS	
NAME	DATE

ILLINOIS DEPARTMENT OF TRANSPORTATION
 U.S. ROUTE 14 OVER LAWRENCE CREEK
**EXISTING AND PROPOSED
 DRAINAGE & UTILITIES**

SCALE: 1" = 50'
 DATE: 2-11-05

DRAWN BY: CLG
 CHECKED BY: JJD



3287UTILITY.DGN