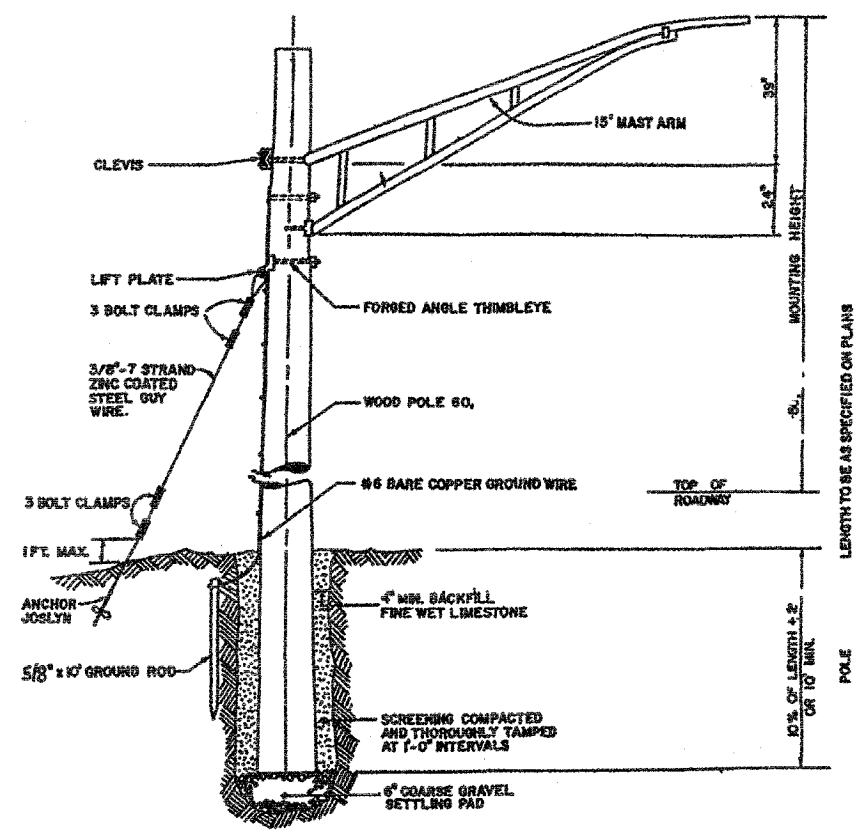


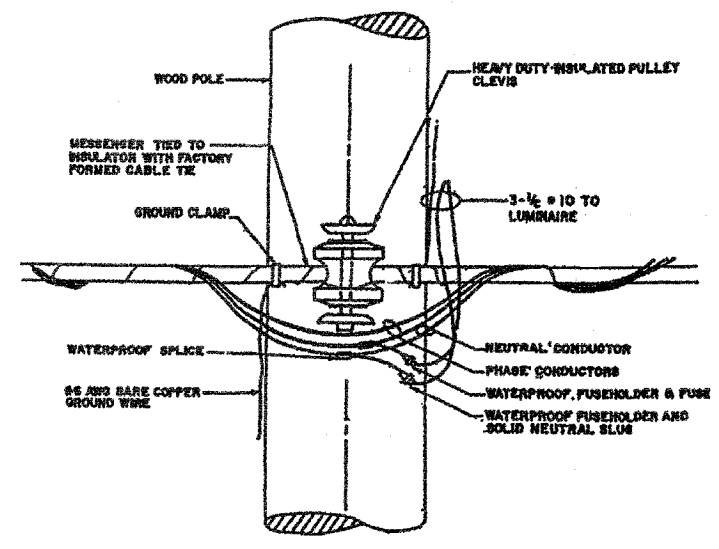
Sheet 31 is deleted.

| | | | | |
|---------------------|------------|---------------------------|--------------|-----------|
| F.A.P. RTE. | SECTION | COUNTY | TOTAL SHEETS | SHEET NO. |
| 066 | 21 (B&G) R | MCPHENRY | 66 | 32 |
| STA. | | TO STA. | | |
| FED. ROAD DIST. NO. | | ILLINOIS FED. AID PROJECT | | |

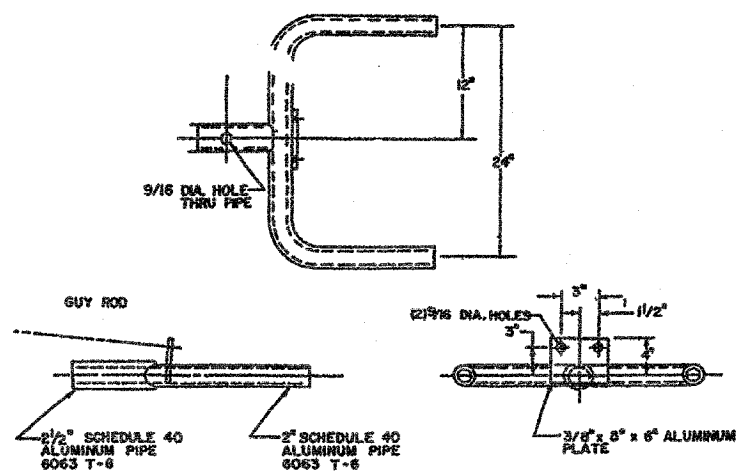
#62391



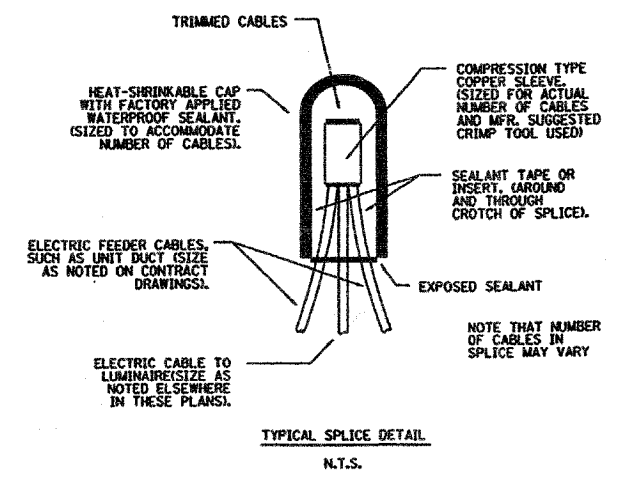
TEMPORARY LIGHT POLE DETAIL



TEMPORARY LIGHT POLE CABLE ATTACHMENT DETAIL



DUPLIX BRACKET DETAIL



TYPICAL SPLICE DETAIL
N.T.S.

| REVISIONS | |
|-----------|------|
| NAME | DATE |
| | |
| | |
| | |
| | |
| | |
| | |
| | |
| | |
| | |

ILLINOIS DEPARTMENT OF TRANSPORTATION
U.S. ROUTE 14 OVER LAWRENCE CREEK
TEMPORARY LIGHTING DETAILS

SCALE: N.T.S.
DATE: 2-28-05

DRAWN BY: JPG
CHECKED BY: GAG

