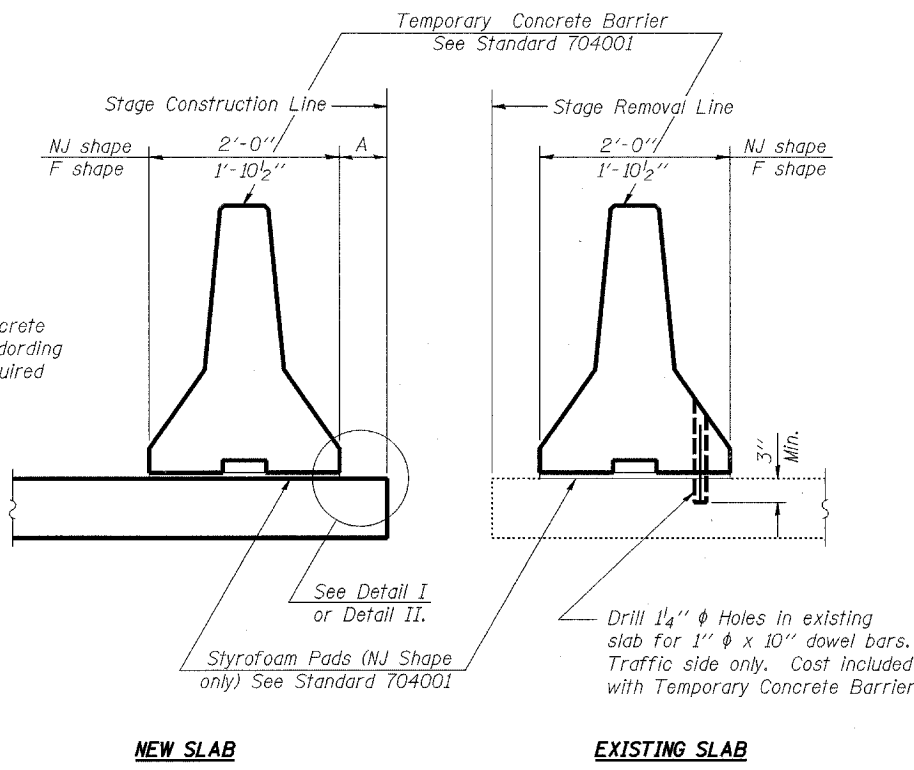


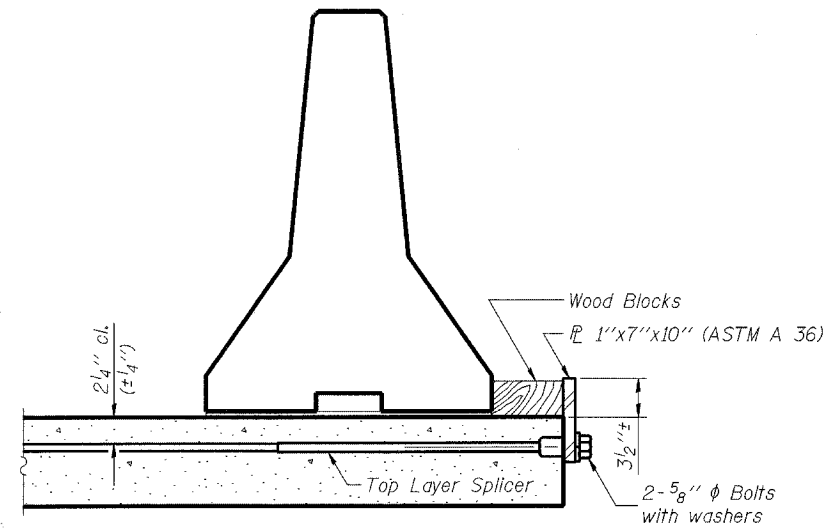
STATE OF ILLINOIS  
DEPARTMENT OF TRANSPORTATION

ROUTE NO.	SECTION	COUNTY	TOTAL SHEETS	SHEET NO.
F.A.P. 066	2(B&G)R	McHENRY	66	37
FED. ROAD DIST. NO. 7	ALL SHEETS	FED. AID PROJECT		

#62391

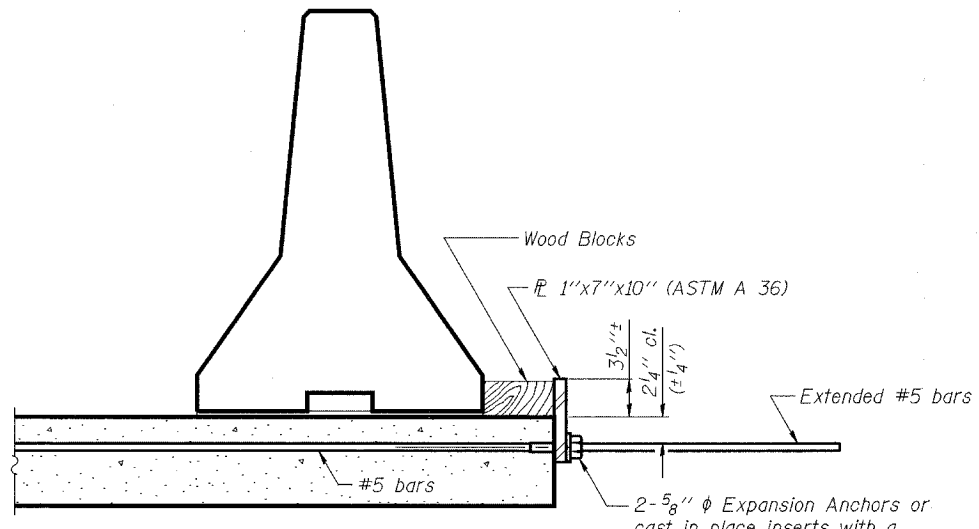


**SECTIONS THRU SLAB**



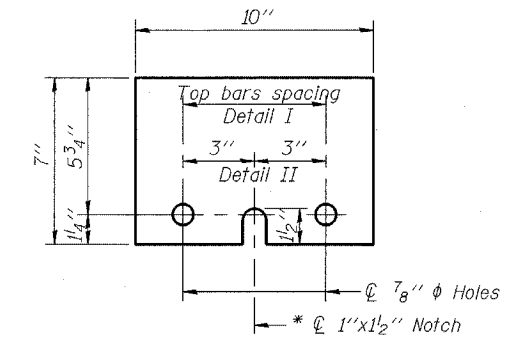
**DETAIL I**

The 1"x7"x10" Plate shall not be removed until Stage II Construction forms and reinforcement bars are in place.



**DETAIL II**

The 1"x7"x10" Plate shall not be removed until Stage II Construction forms and all reinforcement bars are in place and the concrete is ready to be placed.



**1"x7"x10"**

\* Required only with Detail II

When "A" is 3'-6" or less, the temporary concrete barrier shall be Anchored to the new slab according to Detail I or Detail II. No anchorage is required when "A" is greater than 3'-6".

- NOTES**
- Detail I - With Bar Splicer or Couplers:  
Connect one (1) 1"x7"x10" steel  $\bar{P}$  to the top layer of couplers with 2-5/8"  $\phi$  bolts screwed to coupler at approximate  $\phi$  of each barrier panel.
- Detail II - With Extended Reinforcement Bars:  
Connect one (1) 1"x7"x10" steel  $\bar{P}$  to the concrete slab with 2-5/8"  $\phi$  Expansion Anchors or cast in place inserts spaced between the top layer of reinforcement at approximate  $\phi$  of each barrier panel.
- Cost of anchorage is included with Temporary Concrete Barrier.

DESIGNED	RFS	20
CHECKED	LLP	EXAMINED
DRAWN	JPG	PASSED
CHECKED	RFS	ENGINEER OF BRIDGES AND STRUCTURES

**TEMPORARY CONCRETE BARRIER  
FOR STAGE CONSTRUCTION  
U.S. ROUTE 14  
(NORTHWEST HIGHWAY)  
OVER LAWRENCE CREEK  
FAP 066 SECTION 2(B&G)R  
McHENRY COUNTY  
STATION 110+00.00  
STRUCTURE NO. 056-0074**