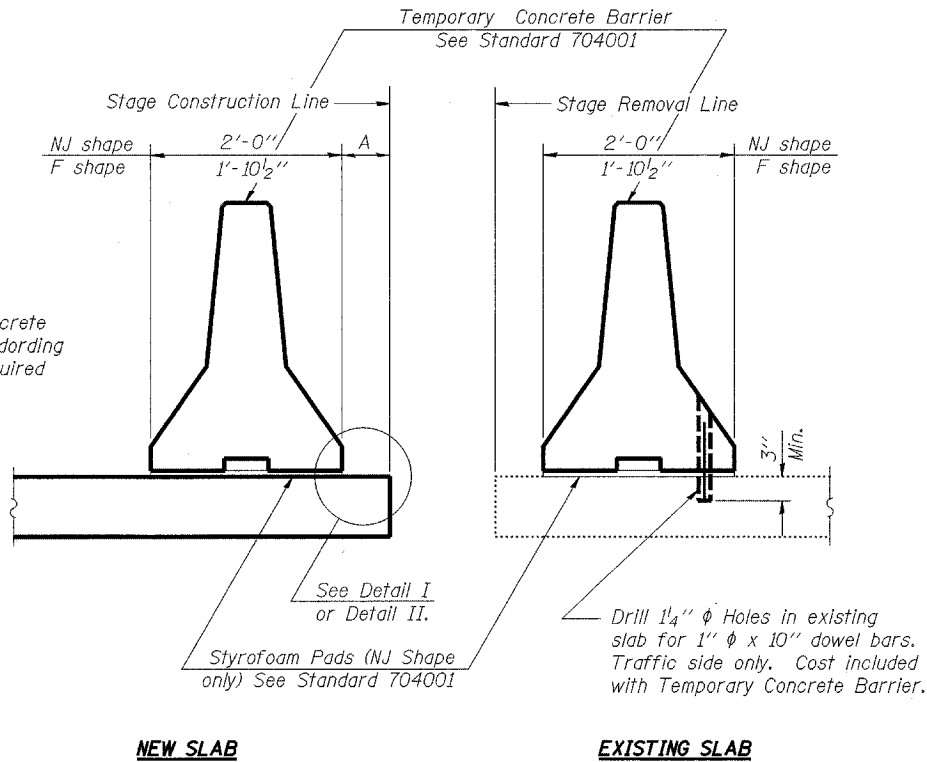


STATE OF ILLINOIS  
DEPARTMENT OF TRANSPORTATION

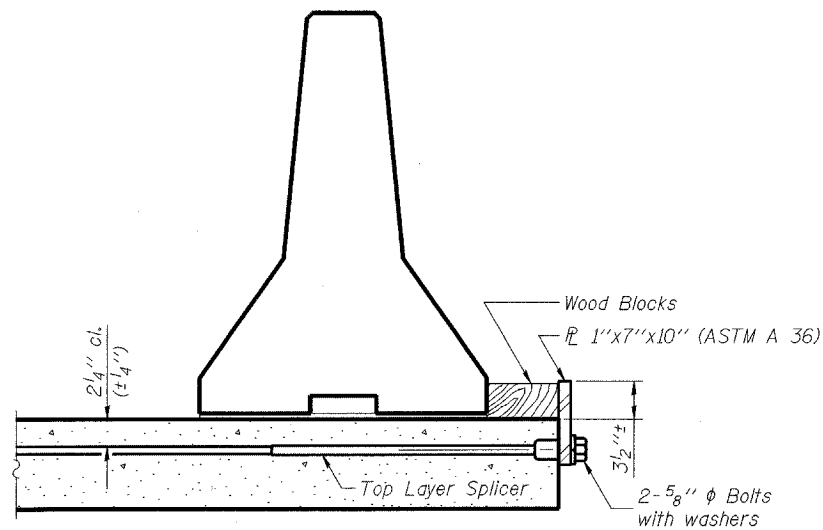
ROUTE NO.	SECTION	COUNTY	TOTAL SHEETS	SHEET NO.
F.A.P. 066	2(B&G)R	McHENRY	66	44
FED. ROAD DIST. NO. 7	ILLINOIS	FED. AID PROJECT-		

SHEET NO. 4  
6 SHEETS

#62391

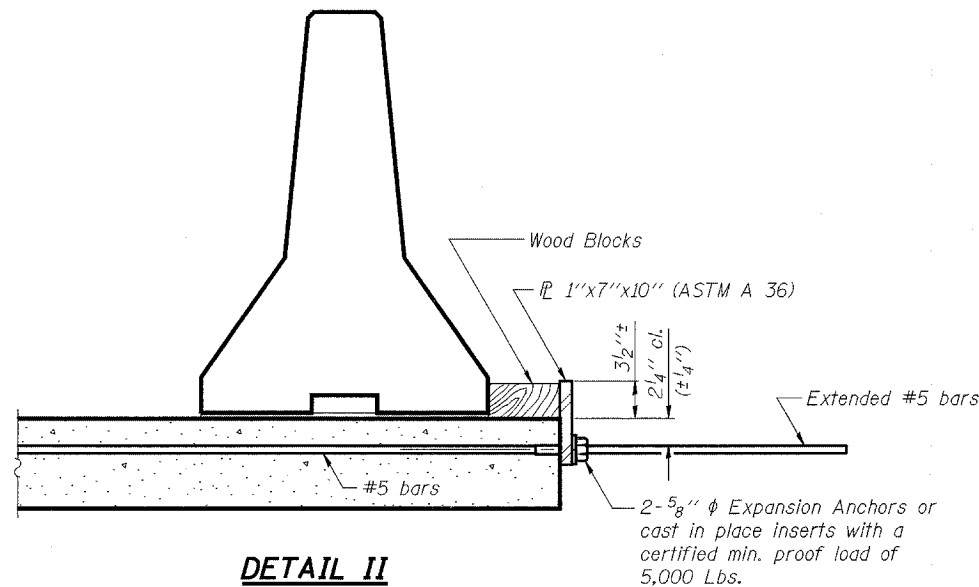


**SECTIONS THRU SLAB**



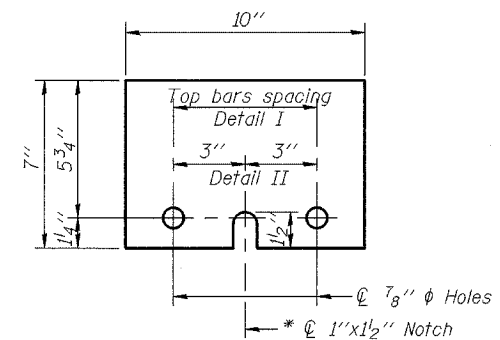
**DETAIL I**

The 1" x 7" x 10" Plate shall not be removed until Stage II Construction forms and reinforcement bars are in place.



**DETAIL II**

The 1" x 7" x 10" Plate shall not be removed until Stage II Construction forms and all reinforcement bars are in place and the concrete is ready to be placed.



**1" x 7" x 10"**

\* Required only with Detail II

- NOTES**
- Detail I - With Bar Splicer or Couplers:  
Connect one (1) 1" x 7" x 10" steel  $\bar{L}$  to the top layer of couplers with 2-5/8"  $\phi$  bolts screwed to coupler at approximate  $\phi$  of each barrier panel.
- Detail II - With Extended Reinforcement Bars:  
Connect one (1) 1" x 7" x 10" steel  $\bar{L}$  to the concrete slab with 2-5/8"  $\phi$  Expansion Anchors or cast in place inserts spaced between the top layer of reinforcement at approximate  $\phi$  of each barrier panel.
- Cost of anchorage is included with Temporary Concrete Barrier.

DESIGNED	RFS
CHECKED	LLP
DRAWN	JPG
CHECKED	RFS

20
EXAMINED
PASSED
ENGINEER OF BRIDGE DESIGN
ENGINEER OF BRIDGES AND STRUCTURES

**TEMPORARY CONCRETE BARRIER  
FOR STAGE CONSTRUCTION  
U.S. ROUTE 14  
(NORTHWEST HIGHWAY)  
OVER TRIBUTARY 'A'  
TO LAWRENCE CREEK  
FAP 066 SECTION 2(B&G)R  
McHENRY COUNTY  
STATION 107+00.00  
STRUCTURE NO. 056-0075**

3287-0056-0075.dgn