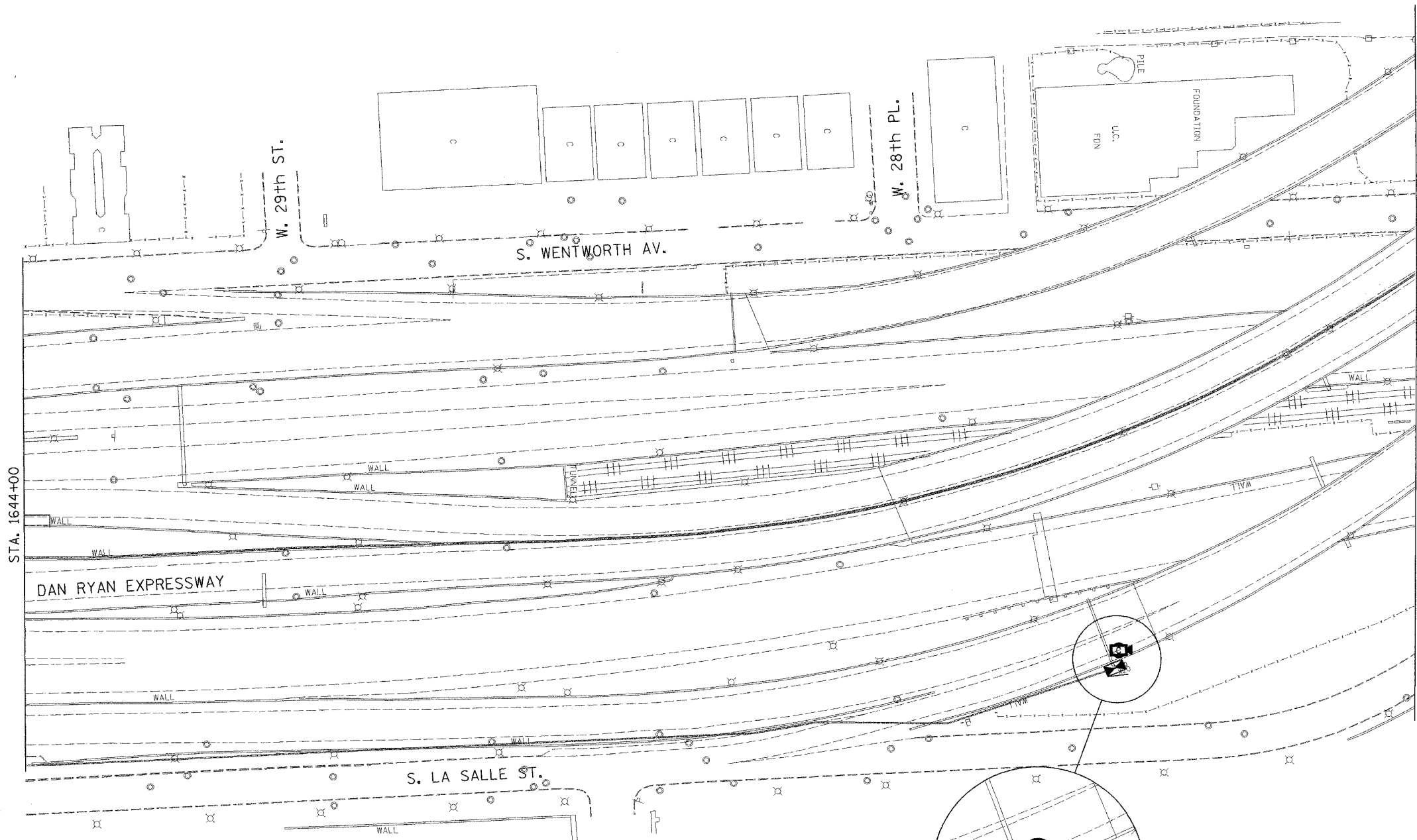
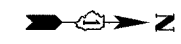


SECTION	COUNTY	TOTAL SHEETS	SHEET NO.
2003-0311	COOK	976	709
STA. 1644+00 TO STA.			
FED. ROAD DIST. NO.	ILLINOIS	FED. AID PROJECT	
62583			



- NOTES:**
- SEE DRAWINGS ME-01 AND ME-02 FOR ELECTRICAL SYMBOLS AND ABBREVIATIONS.
 - UNLESS OTHERWISE STATED, ALL NOTED CABLE AND CONDUIT TO BE FURNISHED AND INSTALLED UNDER THIS CONTRACT.
 - THIS SHEET ONLY DEPICTS INSTALLATION OF CLOSED CIRCUIT TELEVISION ELEMENTS.
 - CONTRACTOR SHALL CONNECT CAMERA POWER FEED TO EXISTING IDOT CONTROLLER CABINET X22 AS DIRECTED IN THE SPECIAL PROVISIONS.
 - SUPPORT ARM OF THE CCTV DOME CAMERA SHALL BE INSTALLED ON THE EXPRESSWAY SIDE OF THE EXTENSION POLE. SEE DRAWING DT-16 FOR CCTV CAMERA MOUNTING DETAILS ON SIGN STRUCTURE.
 - SEE DRAWING COMM-50 FOR CCTV COMMUNICATIONS SYSTEM CONDUIT AND CABLE LAYOUT.
 - SEE DRAWING DT-16 FOR CCTV CABINET MOUNTING DETAILS ON SIGN STRUCTURE.

STA. 1644+00

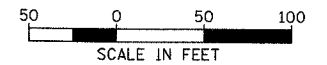
INSTALL AND CONNECT CCTV CAMERA SYSTEM ON EXISTING SIGN STRUCTURE (NOTES 5, 6)

FOR POWER FEED INSTALLATION, SEE NOTE 4

(2) 1/C #12, 1/C #12 GND, 1/4" UD
IN 2" RGC ATS
(2) 1/C #12, 1/C #12 GND,
1/4" UD

INSTALL AND CONNECT CCTV CABINET EQUIPMENT IN CCTV CABINET DR-2B

INSTALL CCTV CABINET DR-2B ON EXISTING SIGN STRUCTURE (NOTE 7)



CCTV-32

Edwards AND Kelcey
ONE NORTH FRANKLIN
CHICAGO, IL 60606
PHONE: (312) 251-3000
FAX: (312) 251-3015
WEB: WWW.EDKORP.COM

REVISIONS	
NAME	DATE

ILLINOIS DEPARTMENT OF TRANSPORTATION
F.A.I. 94/90 (DAN RYAN EXPRESSWAY)
31st STREET TO I-57
**CLOSED CIRCUIT TELEVISION
SITE LAYOUT
CAMERA DR-2B**
SCALE: 1"=50'
DATE: October 29, 2004
DRAWN BY: DHI
CHECKED BY: MJL

P:\0300150.35\150322.ctb 10/14/2004 09:23:40 AM