

F.A.P. RT#	SECTION	COUNTY	TOTAL SHEETS	SHEET NO.
365	56 RS-7	DuPAGE	24	1

CONTRACT NO.: 62909

STATE OF ILLINOIS  
DEPARTMENT OF TRANSPORTATION  
DIVISION OF HIGHWAYS

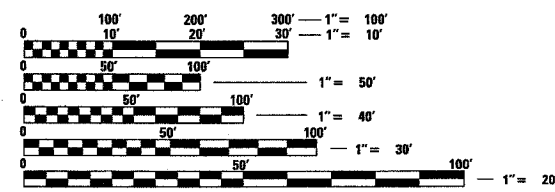
**PROPOSED  
HIGHWAY PLANS**  
F.A.P. 365 – IL 56 (BUTTERFIELD RD.)  
AT FINLEY RD.  
SECTION: 56 RS-7  
SURFACE MAINTENANCE  
DuPAGE COUNTY  
C-91-115-05

FOR INDEX OF SHEETS, SEE SHEET NO. 2

IMPROVEMENT LOCATED IN THE  
VILLAGE OF DOWNERS GROVE

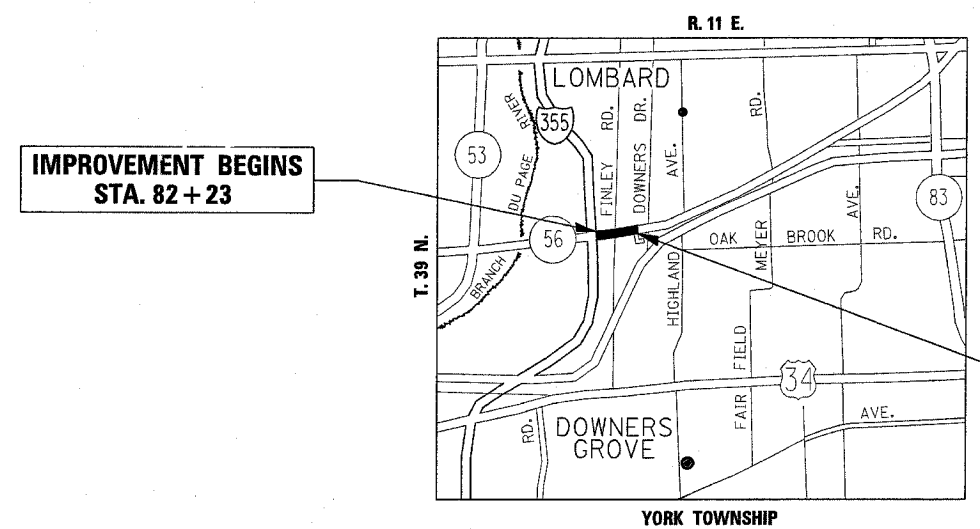


DIST. 1 DESIGN – PLAN PREPARATION ENGINEER: KEN ENG / J. CHANG (847) 705-4432



FULL SIZE PLANS HAVE BEEN PREPARED USING STANDARD ENGINEERING SCALES. REDUCED SIZED PLANS WILL NOT CONFORM TO STANDARD SCALES. IN MAKING MEASUREMENTS ON REDUCED PLANS, THE ABOVE SCALES MAY BE USED.

J.U.L.I.E.  
JOINT UTILITY LOCATION INFORMATION FOR EXCAVATION  
1-800-892-0123



IMPROVEMENT BEGINS  
STA. 82 + 23

IMPROVEMENT ENDS  
STA. 95 + 23

TRAFFIC DATA:  
2001 ADT – 53900  
SPEED LIMIT – 45 MPH

GROSS AND NET LENGTH OF IMPROVEMENT – 1300 LIN. FT. = .25 MI.

STATE OF ILLINOIS  
DEPARTMENT OF TRANSPORTATION  
DIVISION OF HIGHWAYS

SUBMITTED February 24, 20 05  
Dina O'Keefe  
DEPUTY DIRECTOR OF HIGHWAYS, REGION ENGINEER

March 25, 20 05  
Mike Kline  
ENGINEER OF DESIGN AND ENVIRONMENT

March 25, 20 05  
Victor Maden  
DIRECTOR, DIVISION OF HIGHWAYS

PRINTED BY THE AUTHORITY  
OF THE STATE OF ILLINOIS