

F.A.I. RTE.	SECTION	COUNTY	TOTAL SHEETS	SHEET NO.
74	81-1TS-1	ROCK ISLAND	17	1

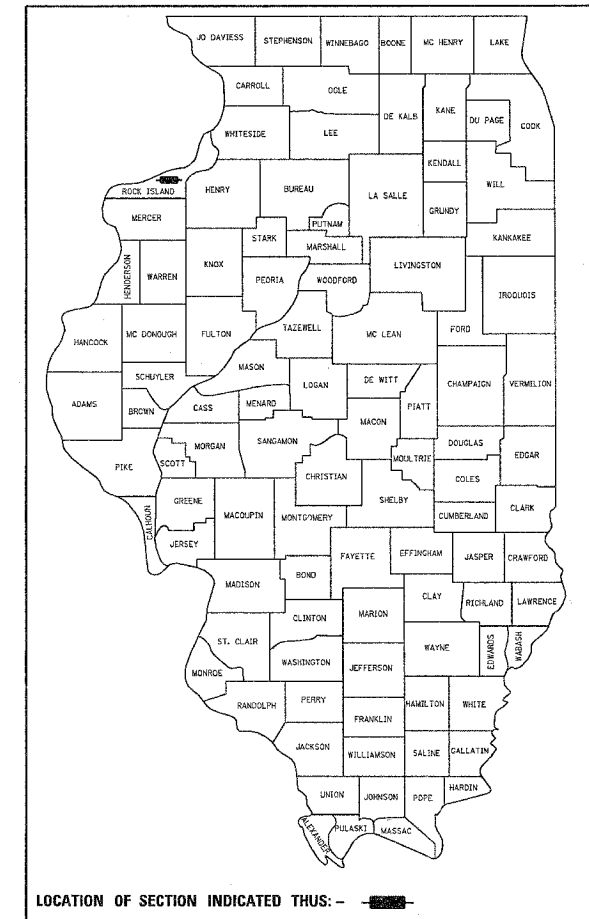
STATE OF ILLINOIS
DEPARTMENT OF TRANSPORTATION
DIVISION OF HIGHWAYS

**PROPOSED
HIGHWAY PLANS**

FAI ROUTE 74 (INTERSTATE 74)
SECTION (81-1)TS-1
PROJECT HS-074-1(091)002
ROCK ISLAND COUNTY

C-92-132-04

CONTRACT NO. 64A39
P-92-089-04



LOCATION OF SECTION INDICATED THUS: - [shaded box] -

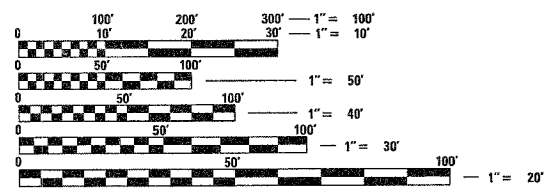
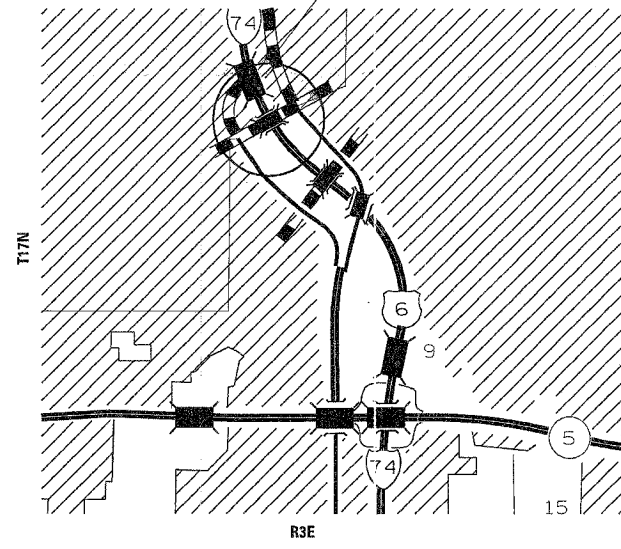
D-92-089-04

- INDEX OF SHEETS
- COVER SHEET
 - INDEX OF SHEETS
 - STATE STANDARDS
 - GENERAL NOTES
 - UTILITIES
 - SUMMARY OF QUANTITIES
 - SCHEDULE OF QUANTITIES
 - TYPICAL
 - SOUTHBOUND REMOVAL DETAILS
 - NORTHBOUND REMOVAL DETAILS
 - NORTHBOUND REPLACEMENT DETAILS
 - NORTHBOUND RETURN AND ISLAND DETAILS
 - SOUTHBOUND SIGNAL PLANS
 - NORTHBOUND SIGNAL PLANS
 - SOUTHBOUND RAMP AND CABLE DETAILS
 - NORTHBOUND RAMP AND CABLE DETAILS
 - SERVICE INSTALLATION DETAIL
 - LIGHT POLE FOUNDATION LGT.007
 - ROUGH GROOVED SURFACE SIGN (91.2)
 - 15-16 TYPICAL PAVEMENT MARKINGS (41.1)
 - 16A PC CONCRETE ISLANDS AND MEDIANS ACCESSIBLE TO THE DISABLED

HIGHWAY STANDARDS

- 000001-04 STANDARD SYMBOLS, ABBREVIATIONS AND PATTERNS
- 001001 AREAS OF REINFORCEMENT BARS
- 353001-01 PCC BASE COURSE WITH BITUMINOUS CONCRETE BINDER AND SURFACE COURSES
- 420001-05 PAVEMENT JOINTS
- 424001-03 CURB RAMPS FOR SIDEWALKS
- 442101-05 CLASS B PATCHES
- 602306 INLET - TYPE B
- 604011-02 FRAME AND GRATE TYPE 3V
- 606001-02 CONCRETE CURB TYPE B AND COMBINATION CONCRETE CURB AND GUTTER
- 701601-04 TYPICAL APPLICATION OF TRAFFIC CONTROL DEVICES
- 701701-04 TYPICAL APPLICATION OF TRAFFIC CONTROL DEVICES
- 702001-05 TRAFFIC CONTROL DEVICES
- 780001-01 TYPICAL PAVEMENT MARKINGS
- 814001 CONCRETE HANDHOLE
- 814006 DOUBLE HANDHOLE
- 857001 STANDARD PHASE DESIGNATION DIAGRAMS AND PHASE SEQUENCES
- 878001-03 CONCRETE FOUNDATION DETAILS
- 880006 TRAFFIC SIGNAL MOUNTING DETAILS
- 886001 DETECTOR LOOP INSTALLATIONS
- 886006 TYPICAL LAYOUT FOR DETECTION LOOPS

LOCATION OF PROJECT
I-74 RAMPS AT 23RD AVENUE
NORTH AND SOUTH BOUND RAMPS
(19TH ST)



FULL SIZE PLANS HAVE BEEN PREPARED USING STANDARD ENGINEERING SCALES. REDUCED SIZED PLANS WILL NOT CONFORM TO STANDARD SCALES. IN MAKING MEASUREMENTS ON REDUCED PLANS, THE ABOVE SCALES MAY BE USED.

J.U.L.I.E.
JOINT UTILITY LOCATION INFORMATION FOR EXCAVATION
1-800-892-0123

CONTRACT NO. 64A39

PROJECT ENGINEER
SCOTT KULLERSTRAND 815-284-5968

PROJECT DESIGNERS
JOE FENWICK 815-284-5480 TRAFFIC SIGNALS
JOEL GRAFF 815-284-5900 PAVEMENT

STATE OF ILLINOIS
DEPARTMENT OF TRANSPORTATION
DIVISION OF HIGHWAYS

SUBMITTED February 10 20 05

Gregory L. Menden
DEPUTY DIRECTOR OF HIGHWAYS, REGION ENGINEER

March 25, 20 05
Mike Stuebel
ENGINEER OF DESIGN AND ENVIRONMENT

March 25, 20 05
Victor Mader
DIRECTOR OF HIGHWAYS, CHIEF ENGINEER

PRINTED BY THE AUTHORITY
OF THE STATE OF ILLINOIS

CONTRACT NO. 64A39				
F.A.I. RTE.	SECTION	COUNTY	TOTAL SHEETS	SHEET NO.
74	61-1TS-1	ROCK ISLAND	16	3
STA.		TO STA.		
FED. ROAD DIST. NO.		ILLINOIS FED. AID PROJECT		

SUMMARY OF QUANTITIES

CODE NUMBER	ITEM	UNIT	90% FED 10% STATE	ROCK ISLAND COUNTY			
				J000-1A		Y031-1F	
				NB	SB	NB	SB
20101700	SUPPLEMENTAL WATERING	UNIT	5.5	1.5	0	1	1
20200500	EARTH EXCAVATION (WIDENING)	CU YD	50	50	0	0	0
20800150	TRENCH BACKFILL	CU YD	19	19	0	0	0
25200100	SODDING	SQ YD	361	361	0	0	0
31200100	STABILIZED SUBBASE 4"	SQ YD	122	122	0	0	0
35300500	PORTLAND CEMENT CONCRETE BASE COURSE 10"	SQ YD	235	235	0	0	0
42400200	PORTLAND CEMENT CONCRETE SIDEWALK 5 INCH	SQ FT	1139	1139	0	0	0
44000025	BITUMINOUS SURFACE REMOVAL (SPECIAL)	SQ YD	974	974	0	0	0
44000500	COMBINATION CURB AND GUTTER REMOVAL	FOOT	315	315	0	0	0
44000600	SIDEWALK REMOVAL	SQ FT	1171	1171	0	0	0
44002800	ISLAND PAVEMENT REMOVAL	SQ YD	136	136	0	0	0
44003800	MEDIAN SURFACE REMOVAL	SQ FT	280	75	205	0	0
44300200	STRIP REFLECTIVE CRACK CONTROL TREATMENT	FOOT	634	634	0	0	0
55100500	STORM SEWER REMOVAL 12"	FOOT	20	20	0	0	0
60240355	INLETS, TYPE B, TYPE "V" FRAME AND GRATE	EACH	1	1	0	0	0
60500060	REMOVING INLETS	EACH	1	1	0	0	0
60605000	COMBINATION CONCRETE CURB AND GUTTER, TYPE B - 6.24	FOOT	312	312	0	0	0
60618300	CONCRETE MEDIAN SURFACE 4"	SQ FT	260	75	205	0	0
67100100	MOBILIZATION	L.SUM	1	0.25	0.25	0.25	0.25
70102830	TRAFFIC CONTROL AND PROTECTION, STANDARD 701601	L.SUM	1	0.25	0.25	0.25	0.25
70102835	TRAFFIC CONTROL AND PROTECTION, STANDARD 701701	L.SUM	1	0.25	0.25	0.25	0.25
70103815	TRAFFIC CONTROL AND SURVEILLANCE	CAL DA	1	0.5	0.5	0	0
* 78000500	THERMOPLASTIC PAVEMENT MARKING - LINE 8"	FOOT	798	560	238	0	0
* 78000600	THERMOPLASTIC PAVEMENT MARKING - LINE 12"	FOOT	346	173	173	0	0
* 78000650	THERMOPLASTIC PAVEMENT MARKING - LINE 24"	FOOT	312	145	167	0	0
78300100	PAVEMENT MARKING REMOVAL	SQ FT	96	96	0	0	0
80800000	SERVICE INSTALLATION (SPECIAL)	EACH	2	0	0	1	1
81030100	CONDUIT SPLICE	EACH	7	0	0	1	6
81400200	HEAVY-DUTY HANDHOLE	EACH	1	0	0	1	0
81400600	CONC DBL HANDHOLE	EACH	2	0	0	1	1
81600315	UNIT DUCT, 2#XLP, 1#6 XLP GROUND 1" POLYETHYLENE	FOOT	100	0	0	100	0
85000000	MAINTAIN EXISTING TRAFFIC SIGNAL INSTALLATION	L.SUM	1	0	0	.5	.5
85700205	FULL-ACTUATED CONTROLLER AND TYPE IV CABINET, SPECIAL	EACH	2	0	0	1	1
87301215	ELECTRIC CABLE SIGNAL, NO.14 2 CONDUCTOR	FOOT	1618	0	0	765	853

* SPECIALTY ITEM

CODE NUMBER	ITEM	UNIT	90% FED 10% STATE	ROCK ISLAND COUNTY			
				J000-1A		Y031-1F	
				NB	SB	NB	SB
87301225	ELECTRIC CABLE SIGNAL, 14 3 CONDUCTOR	FOOT	1618	0	0	765	853
87301245	ELECTRIC CABLE SIGNAL 14.5 CONDUCTOR	FOOT	5048	0	0	2305	2743
87301515	ELECTRIC CABLE IN CONDUIT, LEAD-IN, NO. 18 3 PAIR	FOOT	1718	0	0	1028	690
87301815	ELECTRIC CABLE IN CONDUIT, SERVICE, NO. 6 3 CONDUCTOR	FOOT	215	0	0	150	65
87502440	TRAFFIC SIGNAL POST, GALVANIZED STEEL 10 FT.	EACH	2	0	0	1	1
87502480	TRAFFIC SIGNAL POST GALVANIZED 14	EACH	8	0	0	4	4
87800100	CONCRETE FOUNDATION, TYPE A	FOOT	9	0	0	9	0
87800200	CONCRETE FOUNDATION, TYPE D	EACH	7	0	0	3.5	3.5
87900200	DRILL EXISTING HANDHOLE	EACH	18	0	0	10	8
88200400	TRAFFIC SIGNAL BACKPLATE FORMED PLASTIC	EACH	6	0	0	3	3
88500100	INDUCTIVE LOOP DETECTOR	EACH	8	0	0	4	4
88900100	DETECTOR LOOP TYPE 1	FOOT	229	0	0	107	122
89502380	REMOVE EXISTING HANDHOLE	EACH	3	0	0	2	1
89502385	REMOVE EXISTING CONCRETE FOUNDATION	EACH	5	0	0	4	1
X0324885	CON INSTALLED 1 (NON-METALIC)	FOOT	125	0	0	85	40
X0324887	CON INSTALLED 2 1/2 (NON-METALIC)	FOOT	189	0	0	115	74
X0324888	CON INSTALLED 4 (NON-METALIC)	FOOT	625	0	0	305	320
X0324991	REMOVE AND REINSTALL FIBER OPTIC CABLE IN CONDUIT, SPECIAL	L.SUM	1	0	0	1	0
* 550A0340	STORM SEWERS, CLASS A, TYPE 2 12"	FOOT	10	10	0	0	0
X0322512	REINSTALL LIGHT POLE WITH NEW FOUNDATION	EACH	1	0	0	1	0
X0323153	ELECTRIC CABLE IN CONDUIT, GROUND, No. 6 1C (GREEN)	FOOT	640	0	0	310	330
X0323230	ISLAND SPECIAL	SQ YD	96	96	0	0	0
X0323713	RADIO INTERCONNECT SYSTEM COMPLETE, LOCAL	EACH	1	0	0	0.5	0.5
X4066436	BITUMINOUS CONCRETE SURFACE COURSE, SUPERPAVE, MIX "E", N70	TON	150	150	0	0	0
X4066770	LEVELING BINDER (MACHINE METHOD), SUPERPAVE N70	TON	100	100	0	0	0
X8801310	SIGNAL HEAD, POLYCARBONATE, LED, 1-FACE, 3-SECTION, MAST ARM MOUNTED	EACH	6	0	0	3	3
XX003663	PEDESTRIAN SIGNAL HEAD, 1-FACE, BRACKET MOUNTED WITH COUNTDOWN TIMER	EACH	8	0	0	4	4
X0962500	REMOVE EXISTING TRAFFIC SIGNAL EQUIPMENT	L.SUM	1	0	0	0.5	0.5
XX004440	SIGNAL HEAD, LED, 1-FACE, 3-SECTION, BRACKET MOUNTED, RETROFIT	EACH	13	0	0	7	6
XX004921	PEDESTRIAN PUSH-BUTTON SPECIAL	EACH	8	0	0	4	4
							0
X0324992	GROUT REMOVAL AND REPLACEMENT	EACH	6	0	0	3	3
Z0050400	REMOVE AND REPLACE ANCHOR BOLTS	EACH	10	0	0	5	5

REVISIONS		ILLINOIS DEPARTMENT OF TRANSPORTATION
NAME	DATE	
		SCALE: VERT. HORIZ. DATE DRAWN BY CHECKED BY

F.A.I. RTE.	SECTION	COUNTY	TOTAL SHEETS	SHEET NO.
74	81-ITS-1	ROCK ISLAND	16	4
STA.		TO STA.		
FED. ROAD DIST. NO.		ILLINOIS	FED. AID PROJECT	

SCHEDULE OF QUANTITIES

20200500	EARTH EXCAVATION (WIDENING)				
	CU YD	LOCATION		REMARKS	
	12	ROCK ISLAND COUNTY			
	38	NORTHBOUND RAMP, NORTH RETURN			
	38	NORTHBOUND RAMP, SOUTH RETURN			
TOTAL	50				

25200100	SODDING				
	SQ YD	LOCATION		REMARKS	
	184.8	ROCK ISLAND COUNTY			
	176.3	125+53.30 TO 126+32.10	LT		
	176.3	226+11.70 TO 227+37.00	RT		
TOTAL	361.2				

31200100	STABILIZED SUBBASE 4"				
	SQ YD	LOCATION		REMARKS	
	83.3	ROCK ISLAND COUNTY			
	100.2	125+51.50 TO 126+27.30	LT	RETURN	
	100.2	125+68.50 TO 126+25.00	LT	ISLAND	
	121.9	225+82.20 TO 226+32.20	RT	ISLAND	
	120.4	226+09.30 TO 227+37.00	RT	RETURN	
TOTAL	121.9				

35300500	PORTLAND CEMENT CONCRETE BASE COURSE 10"				
	SQ YD	LOCATION		REMARKS	
	26.6	ROCK ISLAND COUNTY			
	67.7	125+51.50 TO 126+27.30	LT	RETURN	
	67.7	125+68.50 TO 126+25.00	LT	ISLAND	
	59.1	225+82.20 TO 226+32.20	RT	ISLAND	
	81.5	226+09.30 TO 227+37.00	RT	RETURN	
TOTAL	234.9				

42400200	PORTLAND CEMENT CONCRETE SIDEWALK 5 INCH				
	SQ FT	LOCATION		REMARKS	
	737	ROCK ISLAND COUNTY			
	401.7	125+59.50 TO 126+30.10			
	401.7	226+28.00 TO 226+99.00			
TOTAL	1138.7				

44000025	BITUMINOUS SURFACE REMOVAL (SPECIAL)				
	SQ YD	LOCATION		REMARKS	
	705	ROCK ISLAND COUNTY			
	590	125+56.00 TO 126+27.00			
	590	225+70.00 TO 227+70.00			
TOTAL	1295				

44000500	COMBINATION CURB AND GUTTER REMOVAL				
	FOOT	LOCATION		REMARKS	
	145.3	ROCK ISLAND COUNTY			
	170.0	125+51.50 TO 126+27.30	LT	RETURN	
	170.0	226+09.30 TO 227+37.00	RT	RETURN	
	191	125+51.50 TO 126+27.30	LT	ISLAND	
	170.0	226+09.30 TO 227+37.00	RT	ISLAND	
TOTAL	315.3				

44002800	ISLAND PAVEMENT REMOVAL				
	SQ YD	LOCATION		REMARKS	
	136	ROCK ISLAND			
	17	NORTHBOUND INTERSECTION			
	17	SOUTHBOUND INTERSECTION			
TOTAL	153				

44300200	STRIP REFLECTIVE CRACK CONTROL TREATMENT				
	FOOT	LOCATION		REMARKS	
	317	ROCK ISLAND COUNTY			
	317	225+40.00 TO 228+20.00			
	317	125+36.00 TO 126+87.00			
TOTAL	634				

60240355	INLETS, TYPE B, TYPE "V" FRAME AND GRATE				
	EACH	LOCATION		REMARKS	
	1	ROCK ISLAND COUNTY			
	1	125+68.46	99' LT	TYPE 3V GRATE	
TOTAL	1				

60605000	COMBINATION CONCRETE CURB AND GUTTER, TYPE B - 6.24				
	FOOT	LOCATION		REMARKS	
	146.1	ROCK ISLAND COUNTY			
	166.3	125+51.50 TO 126+27.30	LT		
	166.3	226+09.30 TO 227+37.00	RT		
TOTAL	312.4				

78000500	THERMOPLASTIC PAVEMENT MARKING - LINE 8"				
	FOOT	LOCATION		REMARKS	
	240	ROCK ISLAND COUNTY			
	320	NORTHBOUND RAMP, NORTH RETURN		ISLAND & CW'S	
	345	NORTHBOUND RAMP, SOUTH RETURN		ISLAND & CW'S	
	255	SOUTHBOUND RAMP, NORTH RETURN		ISLAND & CW'S	
	255	SOUTHBOUND RAMP, SOUTH RETURN		ISLAND & CW'S	
TOTAL	1160				

78000600	THERMOPLASTIC PAVEMENT MARKING - LINE 12"				
	FOOT	LOCATION		REMARKS	
	74	ROCK ISLAND COUNTY			
	105	NORTHBOUND RAMP, NORTH RETURN		ISLAND CHEVRON	
	97	NORTHBOUND RAMP, SOUTH RETURN		ISLAND CHEVRON	
	93	SOUTHBOUND RAMP, NORTH RETURN		ISLAND CHEVRON	
	93	SOUTHBOUND RAMP, SOUTH RETURN		ISLAND CHEVRON	
TOTAL	369				

78000650	THERMOPLASTIC PAVEMENT MARKING - LINE 24"				
	FOOT	LOCATION		REMARKS	
	36	ROCK ISLAND COUNTY			
	36	NORTHBOUND RAMP		STOP BARS	
	36	SOUTHBOUND RAMP		STOP BARS	
TOTAL	72				

X0323230	ISLAND SPECIAL				
	SG YD	LOCATION		REMARKS	
	100.1	ROCK ISLAND COUNTY			
	122.0	125+68.50 TO 126+25.00	LT		
	122.0	225+82.20 TO 226+32.20	RT		
TOTAL	222.1				

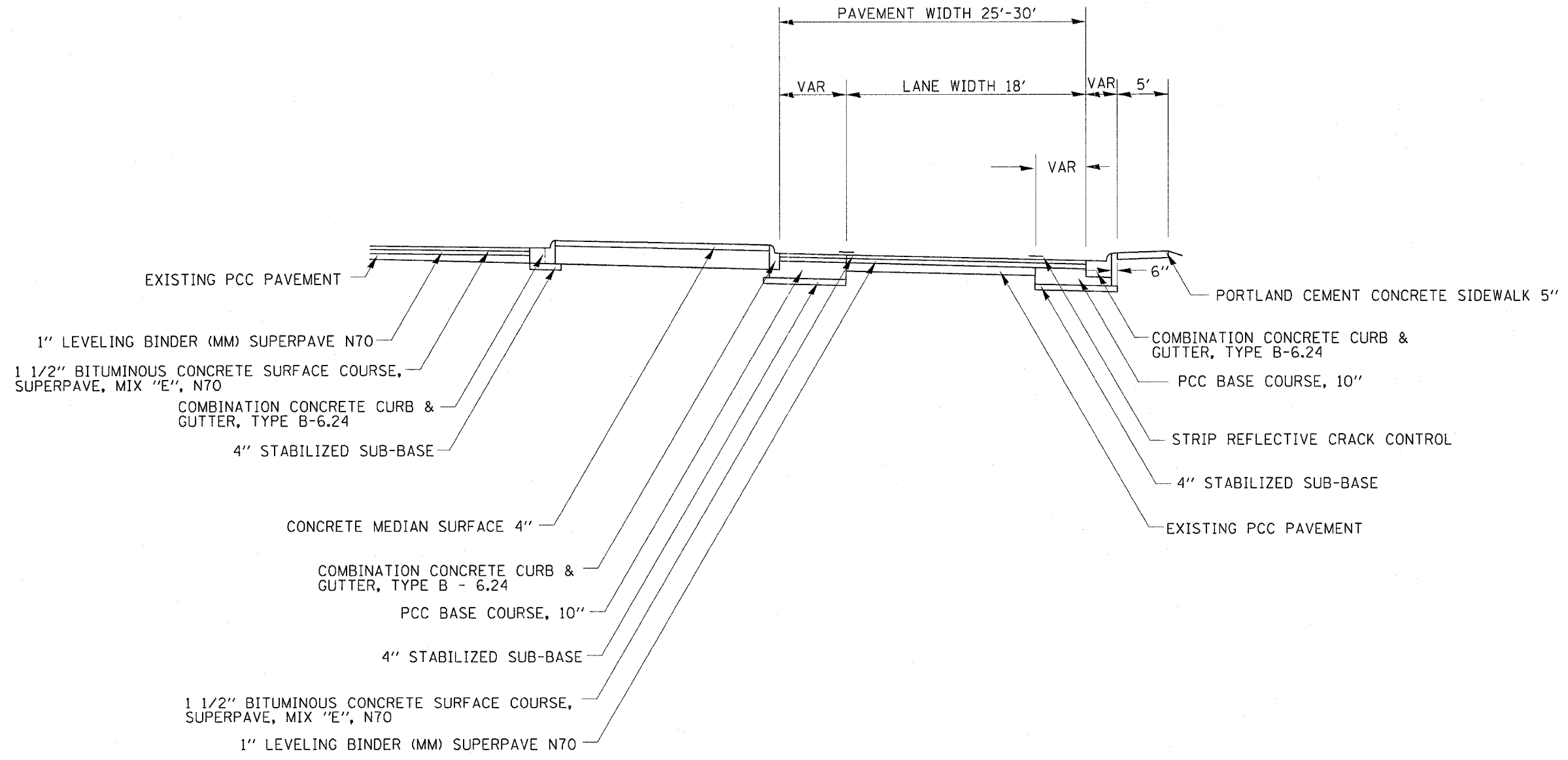
X4066436	BITUMINOUS SURFACE COURSE, SUPERPAVE, MIX "E", N70				
	TON	LOCATION		REMARKS	
	80	ROCK ISLAND COUNTY			
	70	225+40.00 TO 228+20.00			
	70	125+36.00 TO 126+87.00			
TOTAL	150				

X4066770	LEVELING BINDER (MACHINE METHOD), SUPERPAVE N70				
	TON	LOCATION		REMARKS	
	53	ROCK ISLAND COUNTY			
	47	225+40.00 TO 228+20.00			
	47	125+36.00 TO 126+87.00			
TOTAL	100				

REVISIONS		ILLINOIS DEPARTMENT OF TRANSPORTATION
NAME	DATE	
		SCALE: VERT. _____ HORIZ. _____ DATE _____ DRAWN BY _____ CHECKED BY _____

F.A.I. RTE.	SECTION	COUNTY	TOTAL SHEETS	SHEET NO.
74	81-ITS-1	ROCK ISLAND	16	5
STA.		TO STA.		
FED. ROAD DIST. NO.	ILLINOIS	FED. AID PROJECT		

TYPICAL



BITUMINOUS - APPLICATION RATES
 ALL BITUMINOUS MIXTURES : 112 LB/SY-IN
 BITUMINOUS MATERIAL (PRIME COAT) : 0.000286 TON/SY
 AGGREGATE (PRIME COAT) : 0.0015 TON/SY

REVISIONS	
NAME	DATE

ILLINOIS DEPARTMENT OF TRANSPORTATION

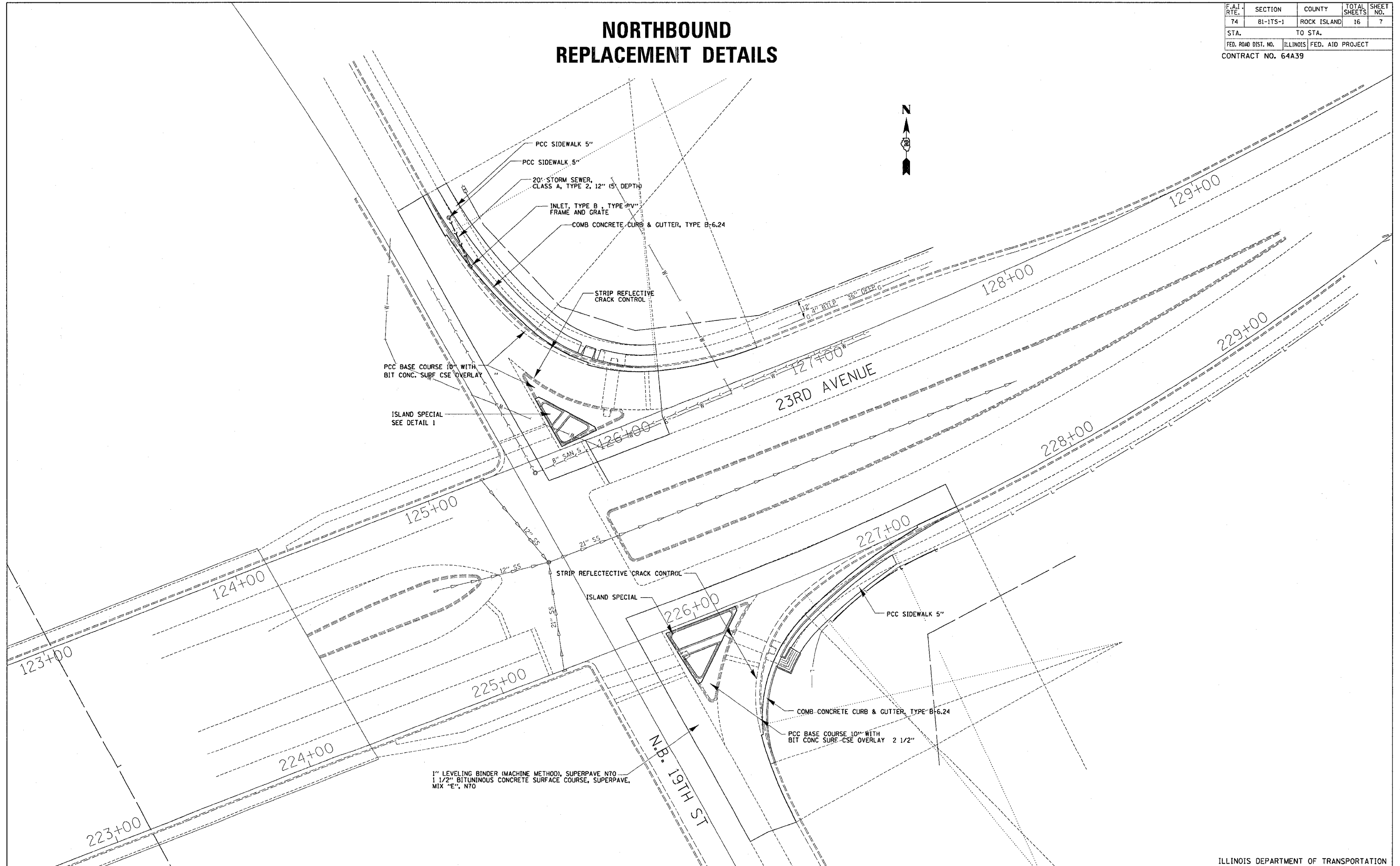
SCALE: VERT. HORIZ.
 DATE DATE

DRAWN BY
 CHECKED BY

PLOT DATE = Wed Mar 09 13:56:05 2005
 PLOT NAME = S:\firmac\cadd\9104.dgn
 PLOT SCALE = 1/8" = 1'-0"
 REFERENCE = REF#

NORTHBOUND REPLACEMENT DETAILS

F.A.I. RTE.	SECTION	COUNTY	TOTAL SHEETS	SHEET NO.
74	81-ITS-1	ROCK ISLAND	16	7
STA.		TO STA.		
FED. ROAD DIST. NO.	ILLINOIS	FED. AID PROJECT		
CONTRACT NO. 64A39				

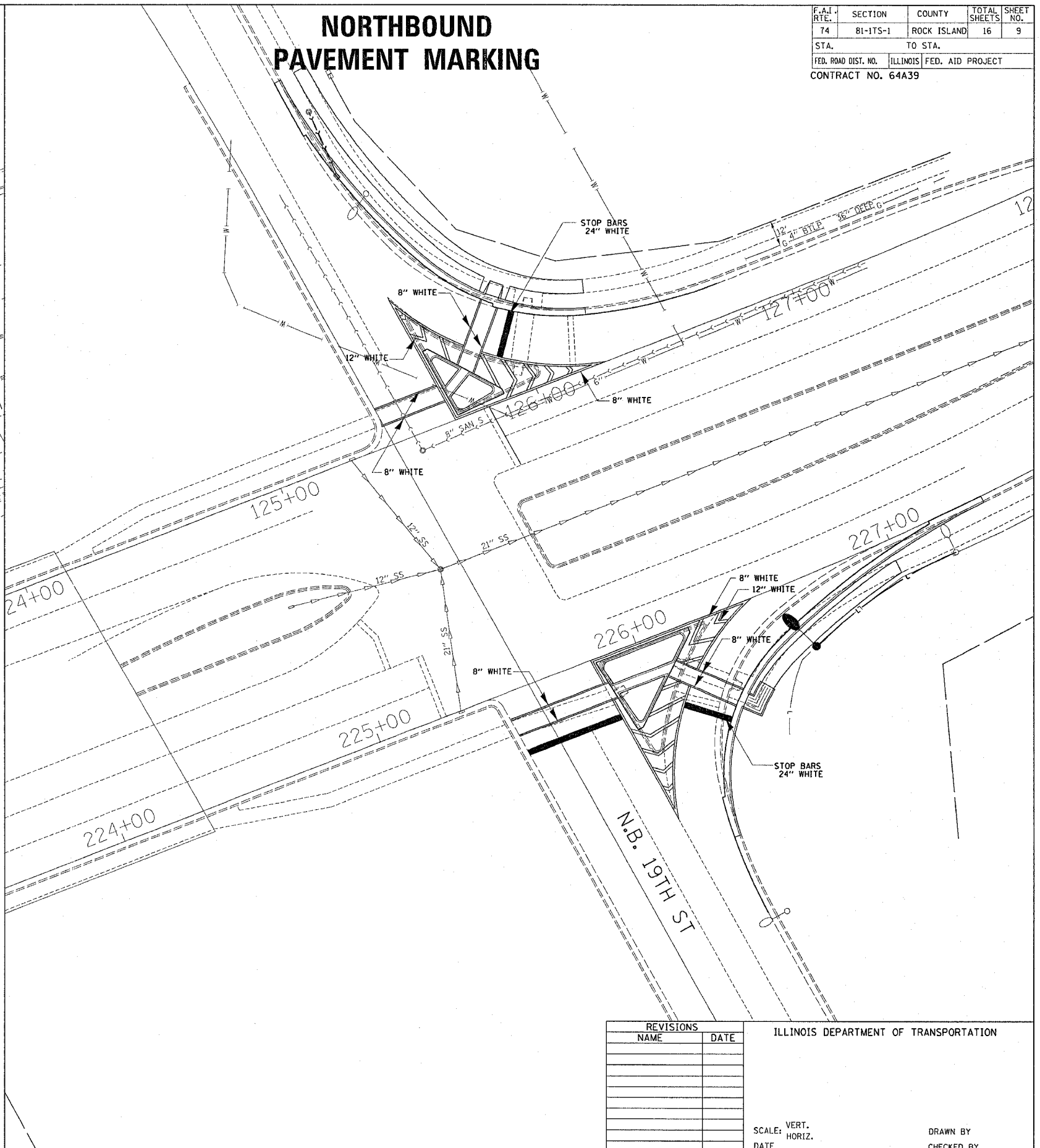
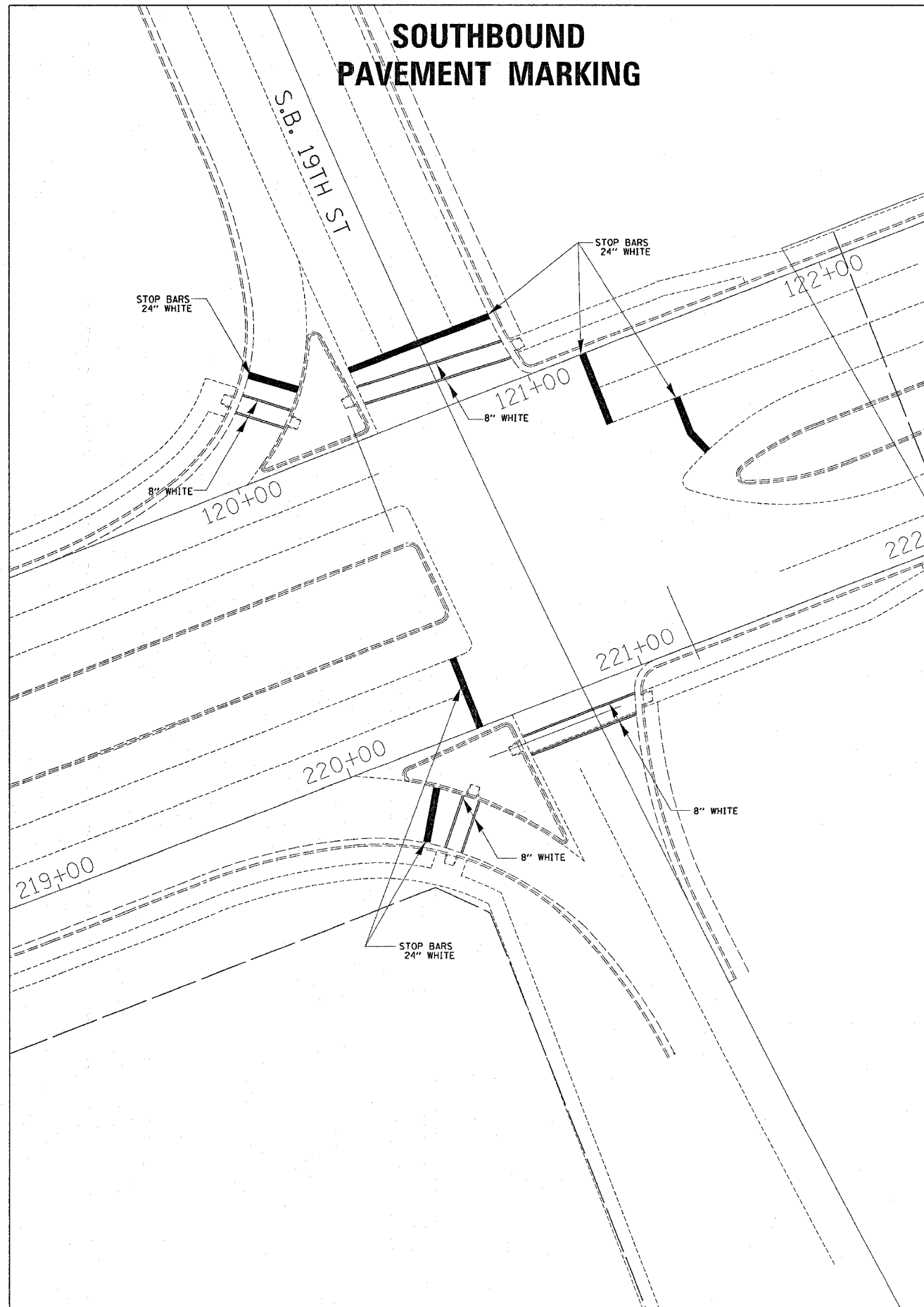


PLOT DATE = Wed Nov 09 13:56:02 2005
 FILE NAME = S:\F\enrich\0808904.dgn
 PLOT SCALE = 20.0000 : 1 IN.
 REFERENCE = AREA

SOUTHBOUND PAVEMENT MARKING

NORTHBOUND PAVEMENT MARKING

F.A.I. RTE.	SECTION	COUNTY	TOTAL SHEETS	SHEET NO.
74	81-ITS-1	ROCK ISLAND	16	9
STA.		TO STA.		
FED. ROAD DIST. NO.		ILLINOIS	FED. AID PROJECT	
CONTRACT NO. 64A39				



PLOT DATE = Thu Feb 18 13:08:47 2025
 FILE NAME = c:\projects\2020\81-ITS-1\64A39\19th.dgn
 PLOT SCALE = 28.0000 / 1 IN.
 REFERENCE = SHEET 9

REVISIONS	
NAME	DATE

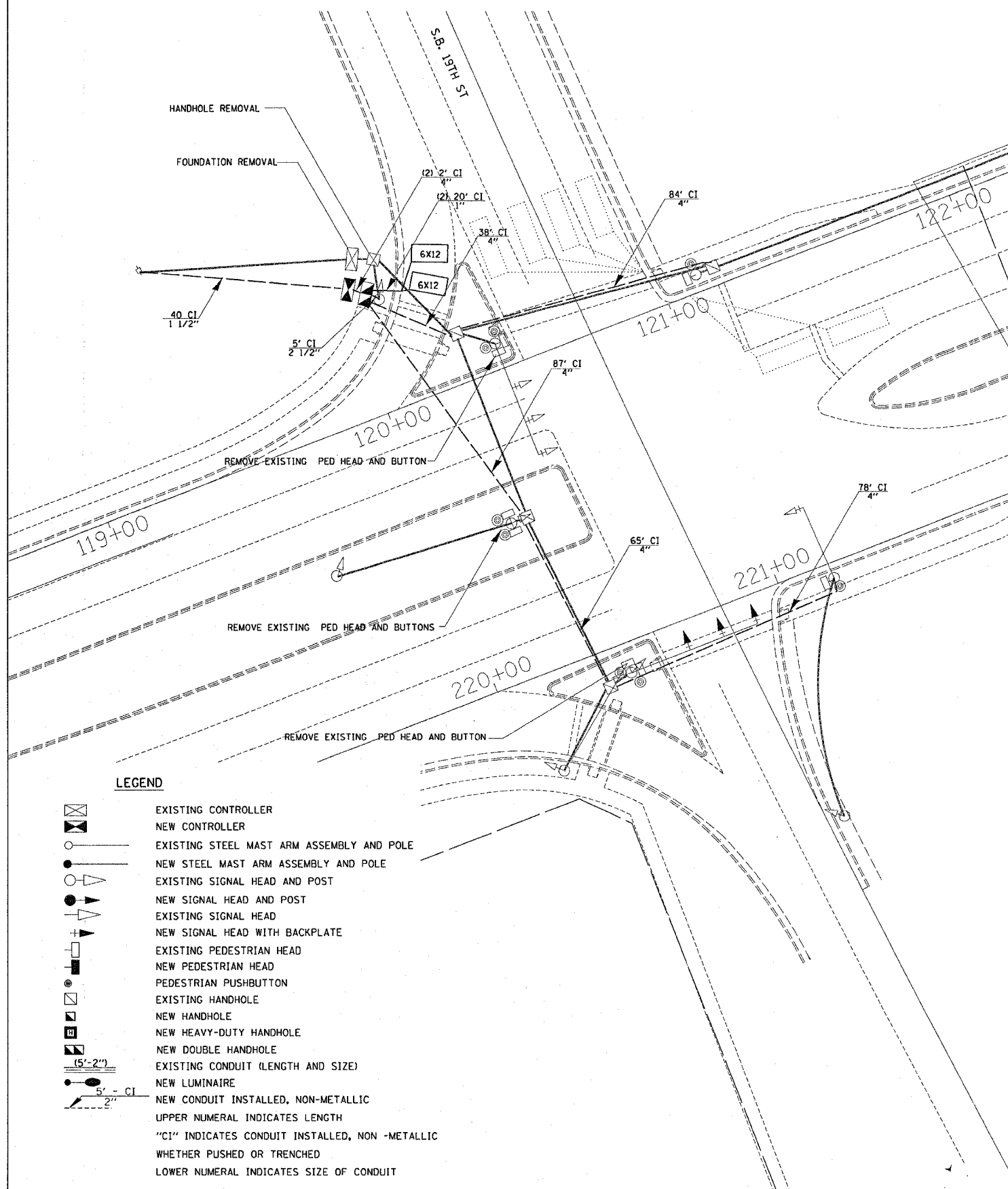
ILLINOIS DEPARTMENT OF TRANSPORTATION

SCALE: VERT. _____
 HORIZ. _____
 DATE _____

DRAWN BY _____
 CHECKED BY _____

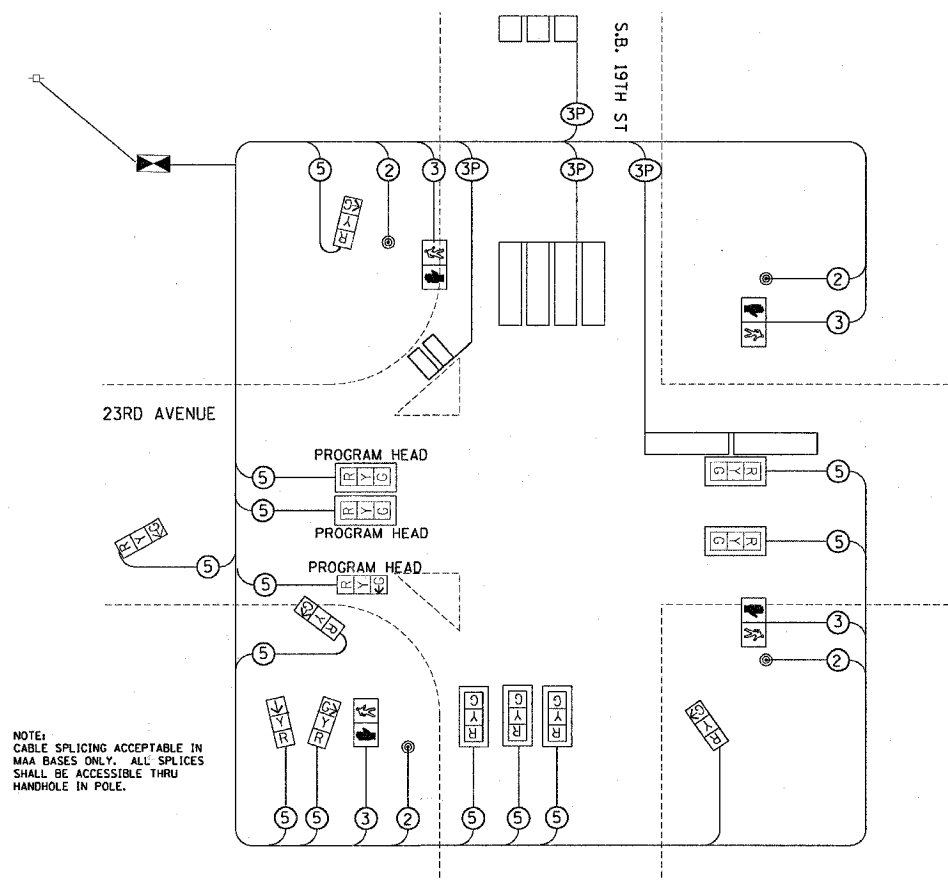
SOUTHBOUND RAMP

F.A.I. RTE.	SECTION	COUNTY	TOTAL SHEETS	SHEET NO.
74	81-ITS-1	ROCK ISLAND	16	10
STA.		TO STA.		
FED. ROAD DIST. NO.		ILLINOIS FED. AID PROJECT		
CONTRACT NO. 64A39				



LEGEND

- EXISTING CONTROLLER
- NEW CONTROLLER
- EXISTING STEEL MAST ARM ASSEMBLY AND POLE
- NEW STEEL MAST ARM ASSEMBLY AND POLE
- EXISTING SIGNAL HEAD AND POST
- NEW SIGNAL HEAD AND POST
- EXISTING SIGNAL HEAD
- NEW SIGNAL HEAD WITH BACKPLATE
- EXISTING PEDESTRIAN HEAD
- NEW PEDESTRIAN HEAD
- PEDESTRIAN PUSHBUTTON
- EXISTING HANDHOLE
- NEW HANDHOLE
- NEW HEAVY-DUTY HANDHOLE
- NEW DOUBLE HANDHOLE
- EXISTING CONDUIT (LENGTH AND SIZE)
- NEW LUMINAIRE
- NEW CONDUIT INSTALLED, NON-METALLIC
- UPPER NUMERAL INDICATES LENGTH
- "CI" INDICATES CONDUIT INSTALLED, NON-METALLIC
- WHETHER PUSHED OR TRENCHED
- LOWER NUMERAL INDICATES SIZE OF CONDUIT

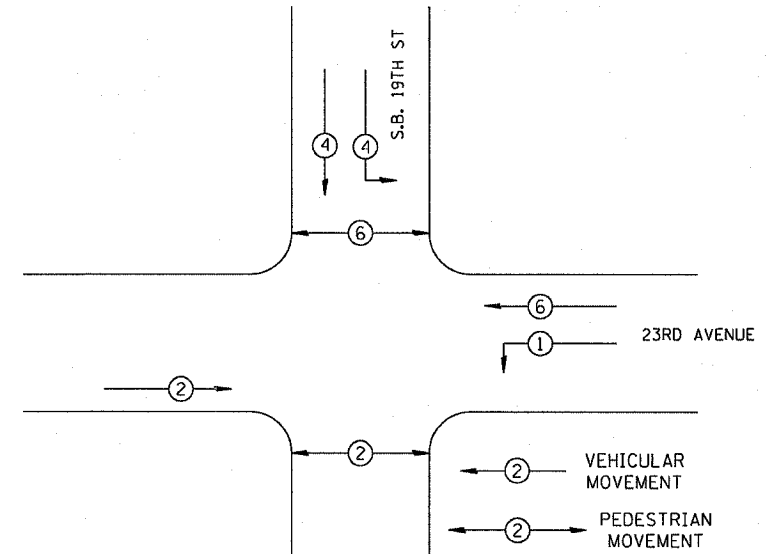


NOTE:
CABLE SPLICING ACCEPTABLE IN
MAA BASES ONLY. ALL SPLICES
SHALL BE ACCESSIBLE THRU
HANDHOLE IN POLE.

- ### LEGEND
- INDICATES NUMBER OF NEW CONDUCTORS. ALL CABLE IS NO. 14 EXCEPT AS INDICATED. "P" INDICATES PAIR CABLE
 - SIGNAL HEAD REMAIN ONLY HOUSE TO BE REPLACED
 - NEW SIGNAL HEAD WITH OR WITHOUT BACKPLATE
 - NEW PEDESTRIAN HEAD - LED
 - PEDESTRIAN PUSHBUTTON
 - LUMINAIRE, 250 WATT

EXISTING CABLE DETAILS

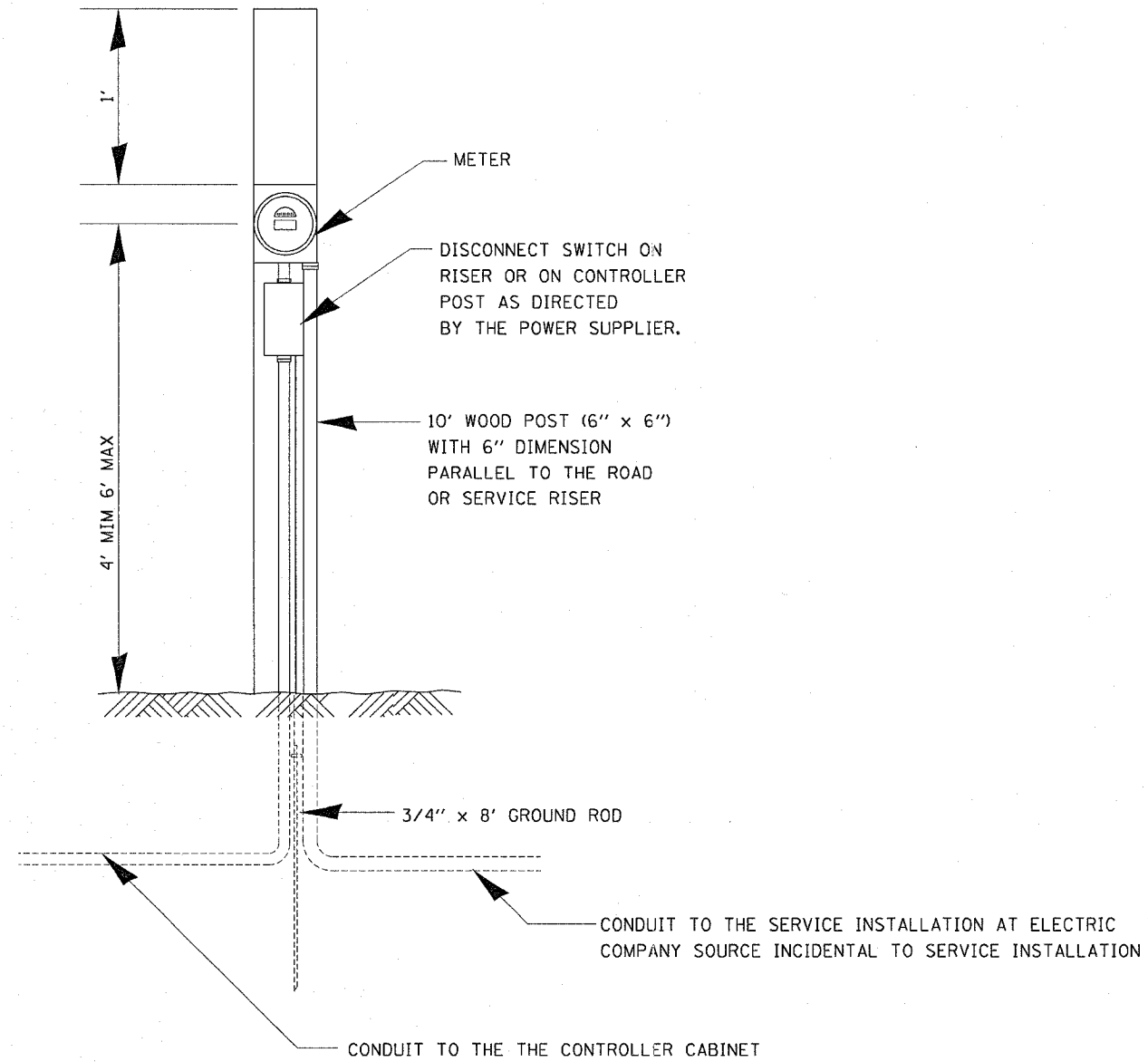
PHASE DESIGNATION DIAGRAM



REFER TO STANDARD 857001

PLOT DATE = Thu Feb 10 13:08:48 2005
FILE NAME = c:\nrc\p05\326819\1\30819.dgn
PLOT NUMBER = 1000000000 / IN.
REFERENCE = 4REF8

F.A.I. RTE.	SECTION	COUNTY	TOTAL SHEETS	SHEET NO.
74	81-ITS-1	ROCK ISLAND	16	12
STA.		TO STA.		
FED. ROAD DIST. NO.	ILLINOIS	FED. AID PROJECT		



ELECTRIC SERVICE INSTALLATION, SPECIAL
(SEE SPECIAL PROVISIONS)

REVISIONS		ILLINOIS DEPARTMENT OF TRANSPORTATION
NAME	DATE	
		SCALE: VERT. HORIZ. DATE
DRAWN BY		CHECKED BY

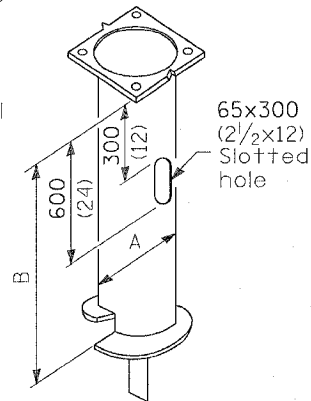
PLOT DATE = Thu Feb 18 13:08:48 2005
FILE NAME = c:\pwork\81-ITS-1\20050218\081-ITS-1.dgn
PLOT NUMBER = 81-ITS-1
REFERENCE = 81-ITS-1

CONTRACT NO. 64A39

BOLT CIRCLE	A	B	MOUNTING HEIGHT
381 mm (15")	254 mm (10")	1.8 m (6')	13.7 m or 16.0 m* (45' 50')
381 mm (15")	203 mm (8")	1.8 m (6')	13.7 m (45')
292 mm (11")	203 mm (8")	1.8 m (6')	12.0 m or less (40')

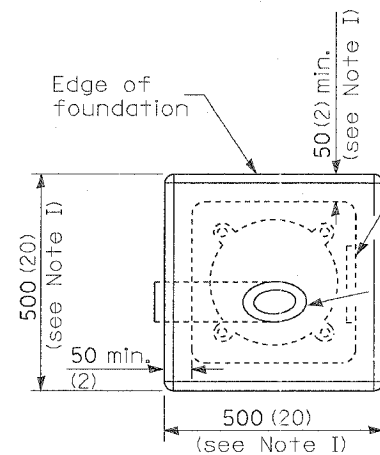
* For use on poles w/twin tenon

** Minimum torque req'd to install foundations shall be 2268 kg (5,000 lbs.)



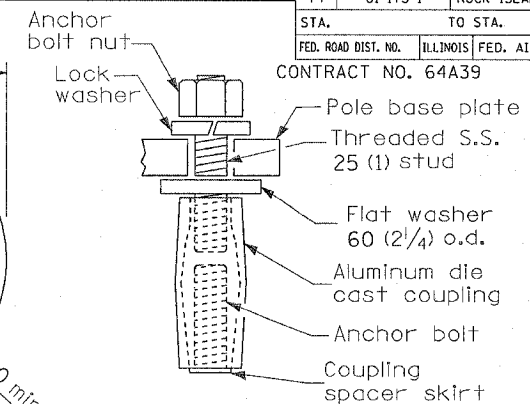
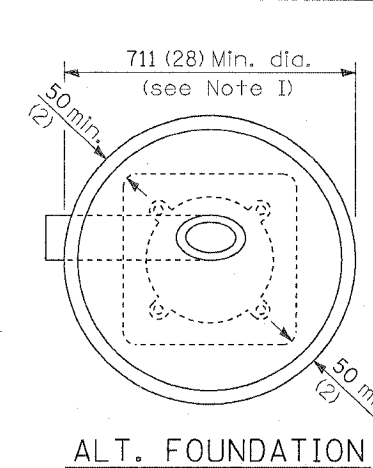
STEEL POLE FOUNDATION

HEIGHT	DEPTH	BOLT CIRCLE
9 m (30')	1.5 m (5'-0")	292 mm (11")
9.4 m - 10.7 m (31'-35')	1.8 m (6'-0")	292 mm (11")
11.9 m - 12.0 m (36'-40')	2.1 m (7'-0")	381 mm (15")
12.5 m - 13.7 m (41'-45')	2.3 m (7'-6")	381 mm (15")
14.0 m - 16.0 m (46'-50')	2.4 m (8'-0")	381 mm (15")



Place door on wireway side. Wireway may be on front, back, or side of foundation as required by the trenching which should permit unit duct to have as few bends as are practical.

Top of fiber duct shall be flush with the tip of foundation for drainage. 125 mm (5") I.D. type I fiber or polystyrene duct wiring window.



GENERAL NOTES

After pouring concrete, the form shall remain undisturbed overnight.

The top 375 mm (15") only shall be formed. Concrete bounded by undisturbed earth only shall fill the remainder of the hole.

I Minimum clearance from the outside edge of foundation to any part of the pole baseplate shall be 50 mm (2").

II The depth of the foundation may be reduced 150 mm (6") for every 300 mm (12") of rock encountered with a minimum depth of 1.4 m (4'-6"). When the depth of the foundation is decreased to less than 1.8 m (6') the anchor bolts shall be cut, threaded, and a steel plate 500 mm x 500 mm x 5 mm (20"x20"x1/4") shall be installed on the anchor bolts 150 mm (6") above the bottom of the excavation. The cost shall be incidental the foundation.

III On parapet walls use 30 mm (1 1/4") ϕ anchor bolts. Use self-locking nut and flat washer. Do not use lockwasher. (For details see Standard III/2.35 of Bridge Design Manual.

IV Bend radius shall be four times bolt diameter.

V Connect ground wires to pole base ground lug, not anchor bolts or transformer base.

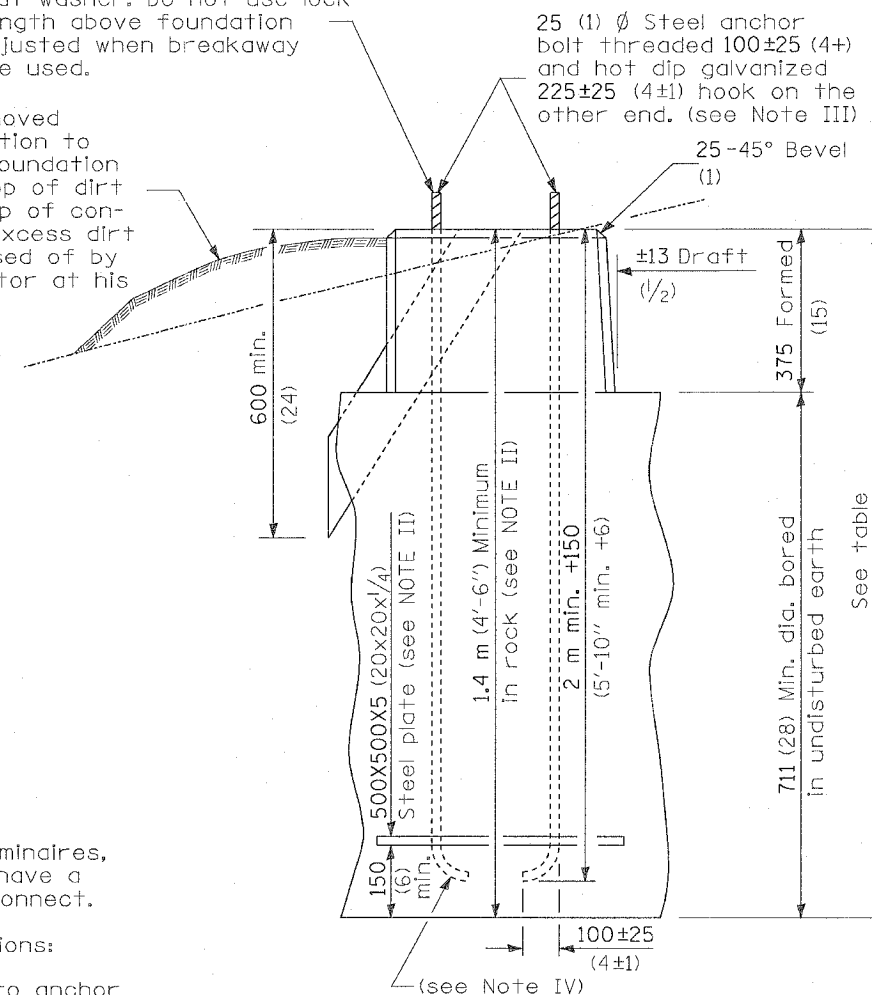
VI Low mount pole foundation setback:

For horizontal mounted luminaires, setback shall be a minimum of 6.1 m (20') from edge of pavement.

For vertical mount luminaires, setback shall be a minimum of 9 m (30') from edge of pavement. Poles shall be located 1.5 m (5') behind guardrail or other protective barriers, or as directed by the Engineer. All dimensions are in millimeters (inches) unless otherwise shown.

Anchor bolt shall extend through nut 10 to 25 (3/8 to 1). Use self-locking nut and flat washer. Do not use lockwasher. Length above foundation shall be adjusted when breakaway devices are used.

Use dirt removed from foundation to fill around foundation top. Make top of dirt level with top of concrete. Any excess dirt will be disposed of by the contractor at his expense.



NOTE: On poles with two luminaires, each luminaire shall have a separate fused disconnect.

Installation Instructions:

Screw couplings on to anchor bolts to end of threads, level couplings, very important, as couplings will become overstressed and either crack or strip threads inside coupling.

POLE BASE MOUNTING & WIRING

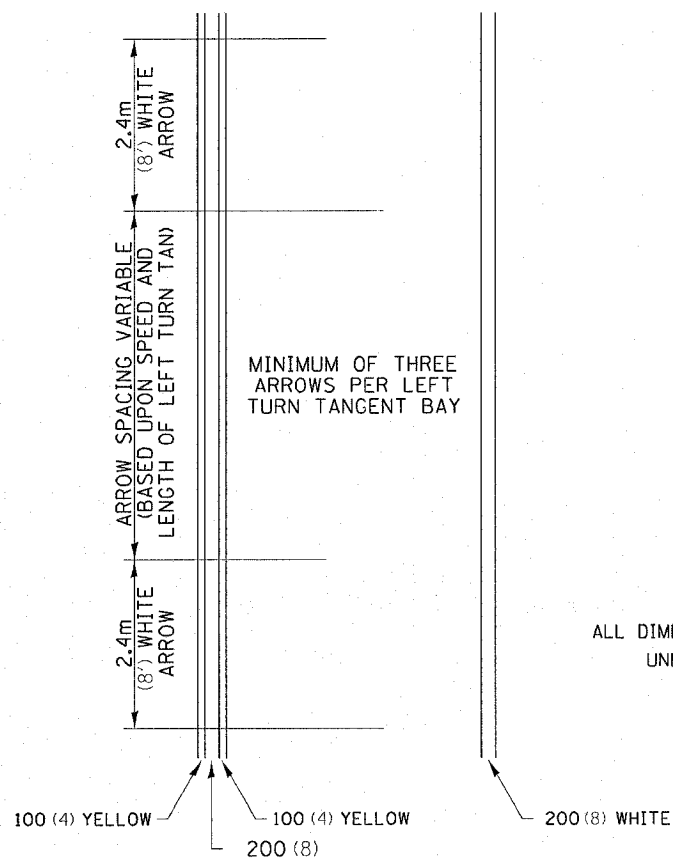
DATE	REVISIONS

LIGHT POLE FOUNDATION

F.A.I. RTE.	SECTION	COUNTY	TOTAL SHEETS	SHEET NO.
74	BI-ITS-1	ROCK ISLAND	16	16
STA.		TO STA.		
FED. ROAD DIST. NO.		ILLINOIS FED. AID PROJECT		

TYPICAL PAVEMENT MARKINGS

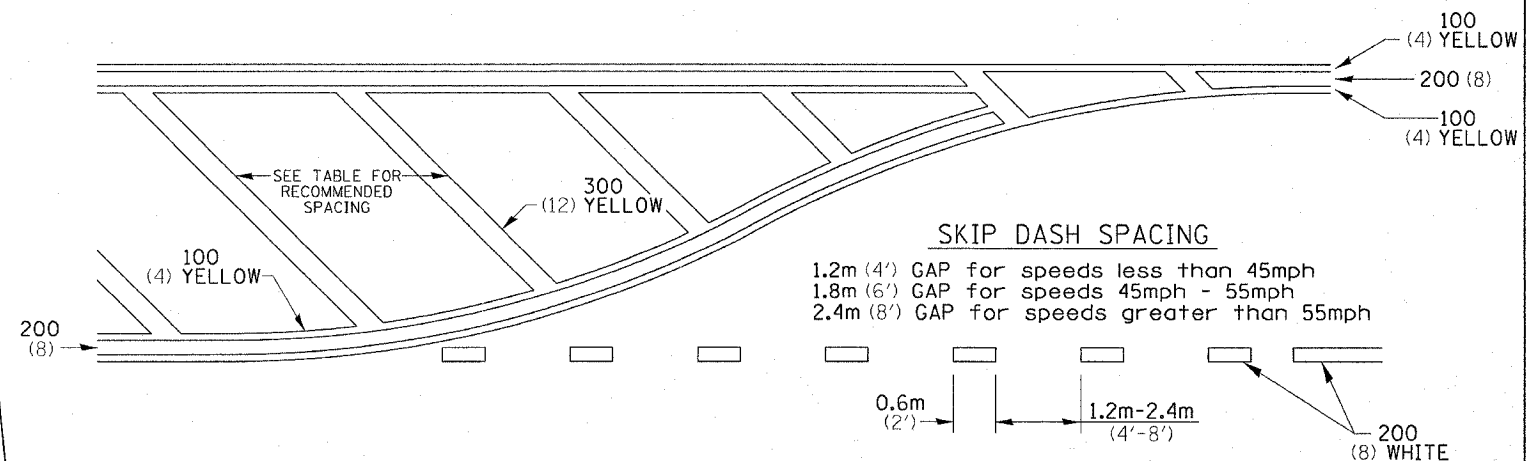
ARROW LAYOUT



- ▲ ONE-WAY AMBER MARKER
- △ ONE-WAY CRYSTAL MARKER
- ◆ TWO-WAY AMBER MARKER

ALL DIMENSIONS ARE IN MILLIMETERS (INCHES) UNLESS OTHERWISE NOTED.

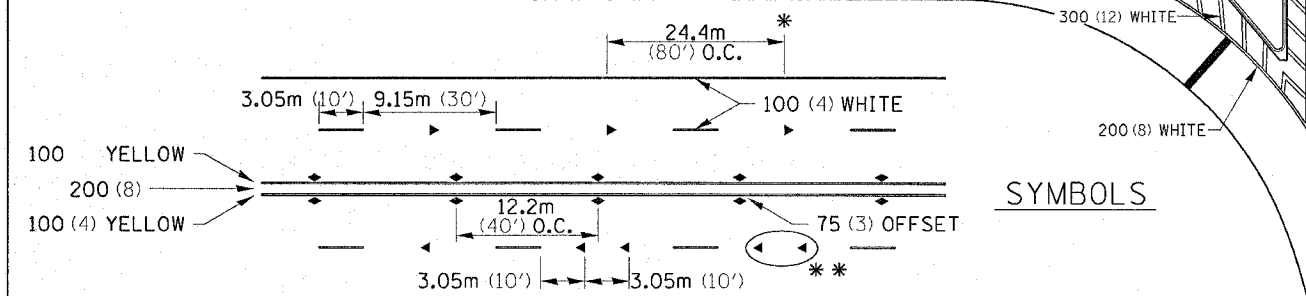
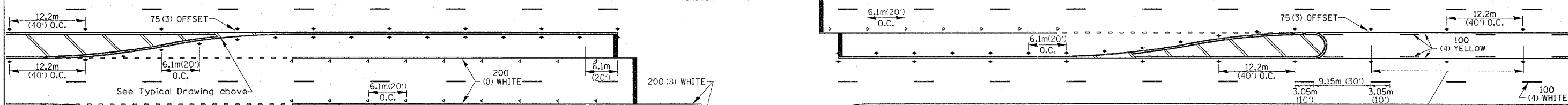
TYPICAL PAVEMENT MARKING FOR FLUSH MEDIAN



RECOMMENDED SPACING BETWEEN DIAGONALS (IN FEET)

Speed Limit Range	Continuous Median Area	Intersection Channelization	Objects (Islands)
less than 50km/H (30MPH)	15.3m (50')	4.53m (15')	3.05m (10')
50-60km/H (30-40MPH)	22.9m (75')	6.1m (20')	4.53m (15')
70km/H (45MPH) & over	22.9m (75')	9.05m (30')	6.1m (20')

NOTE: if the spacing recommended in the Table does not permit at least five diagonal lines in the area being marked, the spacing from the next lowest speed range should be used. The recommended spacing is measured parallel to the pavement center line.



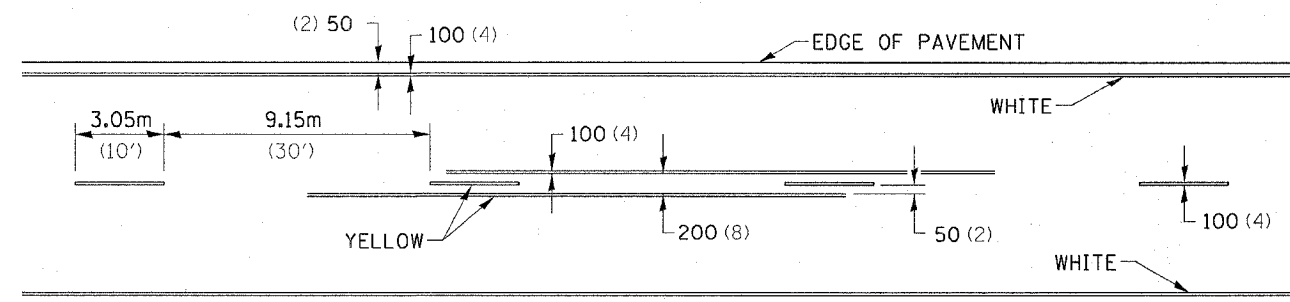
- * REDUCE TO 12.2m (40') O.C. ON CURVES WHERE ADVISORY SPEEDS ARE 15km/H (10MPH) LOWER THAN POSTED SPEEDS.
- ** USE DOUBLE MARKERS WHEN ADT ≥ 25,000

MULTI-LANE / UNDIVIDED

SYMBOLS

See Typical Drawing above
 12.2m (40') O.C.
 6 at (40') O.C. APPROACH SIDE ONLY

TYPICAL PAVEMENT MARKING FOR TWO LANE SECTION - NO PASSING ZONES



F.A. RTE.	SECTION	COUNTY	TOTAL SHEETS	SHEET NO.
74	81-ITS-1	ROCK ISLAND	16	16A
STA.		TO STA.		
FED. ROAD DIST. NO.		ILLINOIS	FED. AID PROJECT	

PC CONCRETE ISLANDS AND MEDIANS ACCESSIBLE TO THE DISABLED

General Notes:

See Standard 606301 and plan sheets for station & offsets, radii, dimensions, and details not shown.

The sidewalk should drain to the low side of the island. If necessary the sidewalk shall be sloped to drain at a maximum 2% grade.

See the plan general notes for the type of curb & gutter to be used on islands.

Curb & gutter adjacent to the walkway in the interior of the island shall have 150 (6) gutter flags.

The sidewalk should not be closer than 900 (36) from the corner of the island.

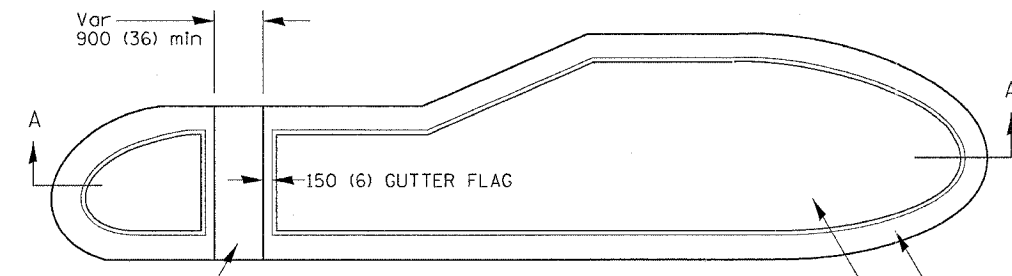
Keyed longitudinal construction joints shall be constructed without tie bars.

Medians and large islands shall consist of PCC Sidewalk 125 (5), Concrete Median Surface 100 (4), and Combination Concrete Curb & Gutter, Type M or B of the size specified. Median island can also be solid concrete medians.

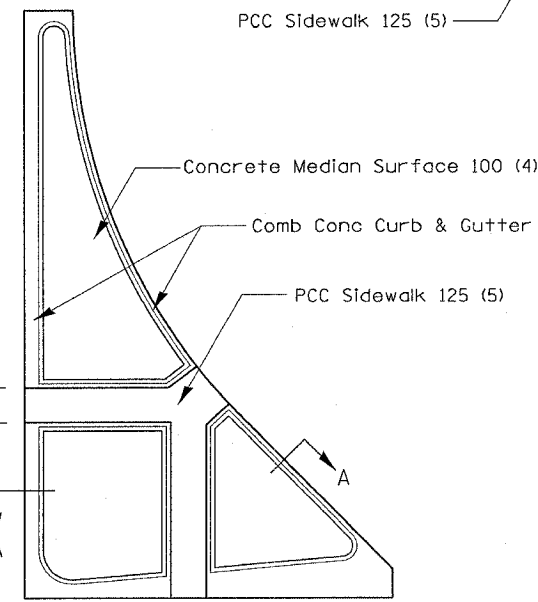
Locations, layouts, and widths of the flush sidewalk area, shall be determined by the designer and shown on the plans.

The intermediate and small islands will be measured for payment from E.O.P. to E.O.P. using either option 1 or option 2, as directed by the Engineer, and will be paid for at the contract unit price per SQ M (SQ YD) for ISLAND SPECIAL, which shall include the combination curb & gutter, sidewalk, aggregate fill, concrete median surface, and solid concrete median.

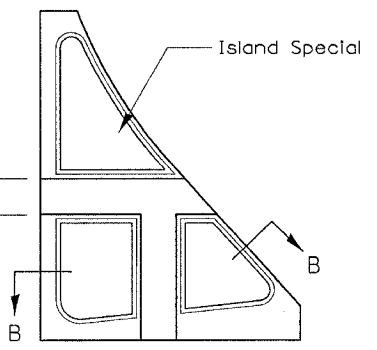
ALL DIMENSIONS ARE IN MILLIMETERS (INCHES) UNLESS OTHERWISE NOTED.



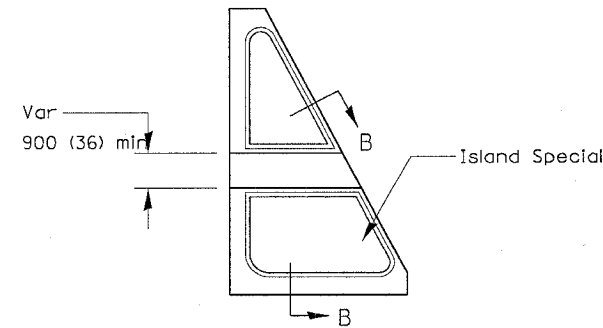
TYPICAL PLAN OF MEDIAN ISLAND



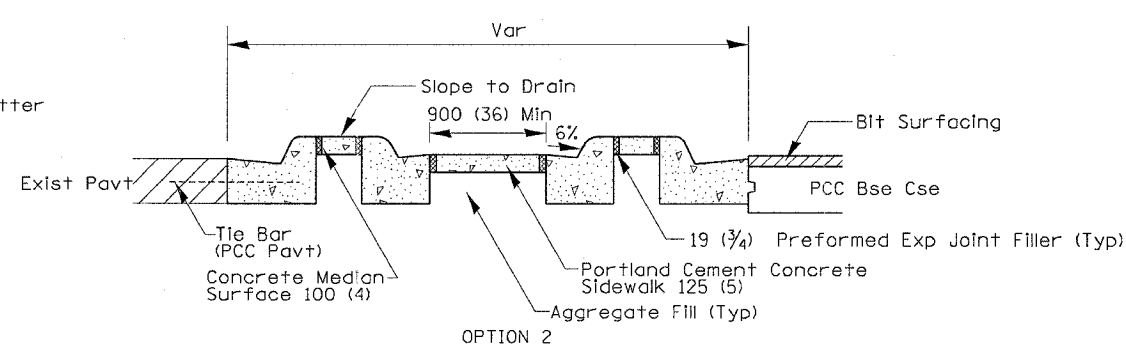
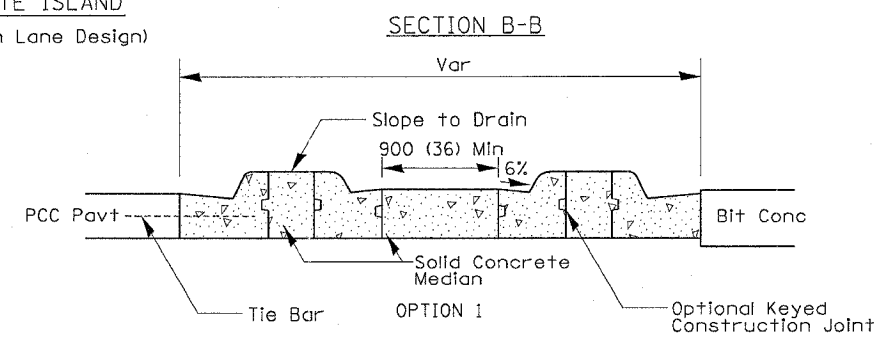
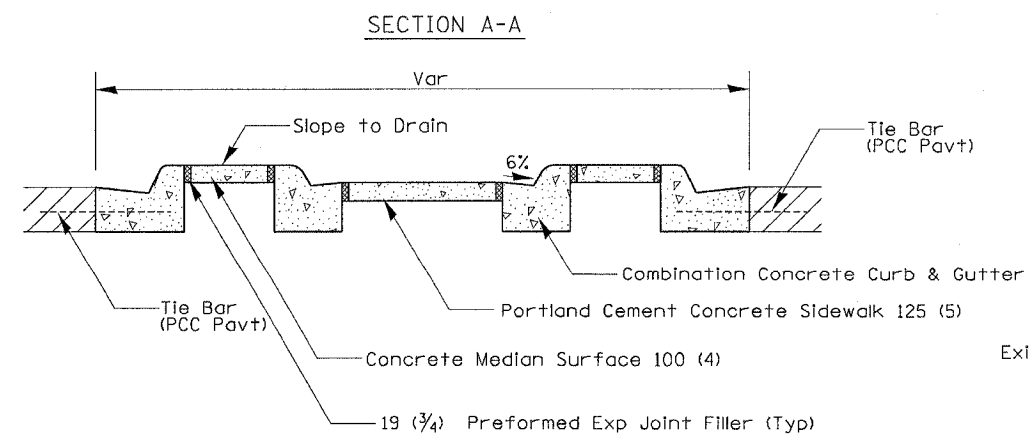
LARGE ISLAND (Free Flow Design)



INTERMEDIATE ISLAND (For Right Turn Lane Design)



SMALL ISLAND (For Typical Design)



REVISIONS	
NAME	DATE

ILLINOIS DEPARTMENT OF TRANSPORTATION
PC CONCRETE ISLANDS AND MEDIANS ACCESSIBLE TO THE DISABLED
 SCALE: VERT. HORIZ. DATE 1-15-04 DRAWN BY LM CHECKED BY BW

PLOT DATE = Wed Nov 09 13:56:05 2005
 FILE NAME = S:\Fennick\ad89194.dgn
 PLOT SCALE = 200/800 = 1/4"