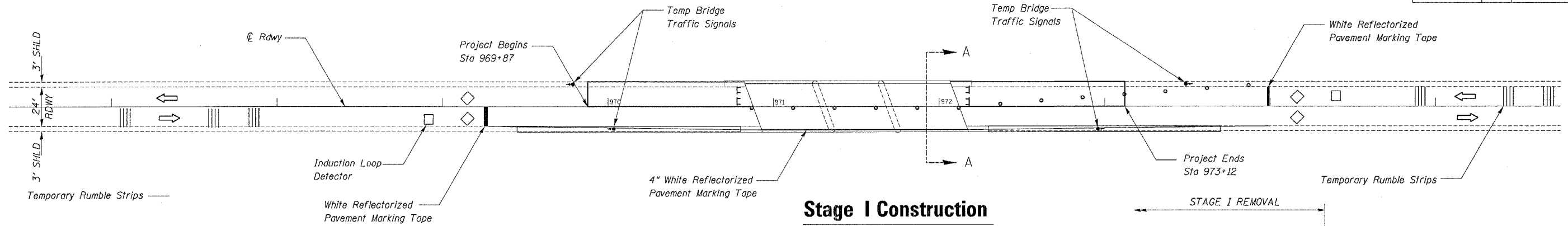


| F.A.S. RTE.         | SECTION | COUNTY   | TOTAL SHEETS     | SHEET NO. |
|---------------------|---------|----------|------------------|-----------|
| 2079                | 16BR-M  | OGLE     | 14               | 5         |
| STA.                |         | TO STA.  |                  |           |
| FED. ROAD DIST. NO. |         | ILLINOIS | FED. AID PROJECT |           |

### Stage I Traffic Control

Refer to Standard 701316



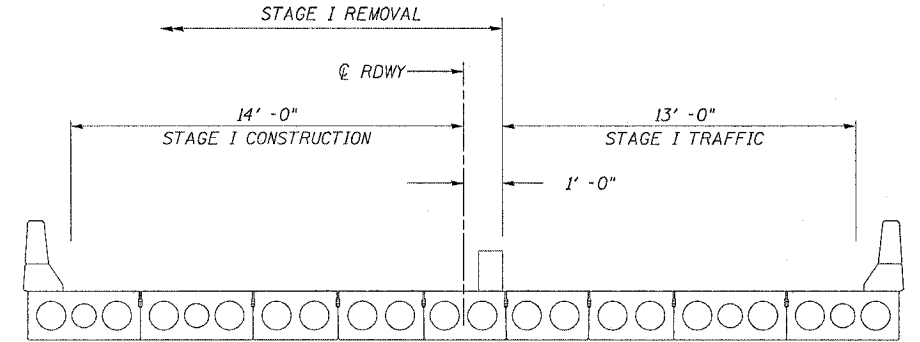
### Stage I Construction

Place Bituminous & PCC Shoulder on South Side using Standard 701306 or 701326

Install Standard 701316. Use Standard 701201

Move Traffic to Stage I Traffic Lane. Complete Stage I Construction.

Place Bituminous & PCC Shoulder on North Side.



SECTION A-A

| Pavement Marking Removal |            | Sq. Ft. |
|--------------------------|------------|---------|
| Stage I                  | Edge Line  | 120     |
|                          | Centerline | 27      |
| Stage II                 | Edge Line  | 48      |
| Total                    |            | 195     |

| Temporary Bridge Traffic Signals |  | Each |
|----------------------------------|--|------|
| Standard 701316                  |  | 1    |
| Total                            |  | 1    |

#### Pavement Marking Tape, Type III 4"

|                    | Foot |
|--------------------|------|
| Stage I Right Line | 473  |
| Stage I Edge Line  | 470  |
| Total              | 943  |

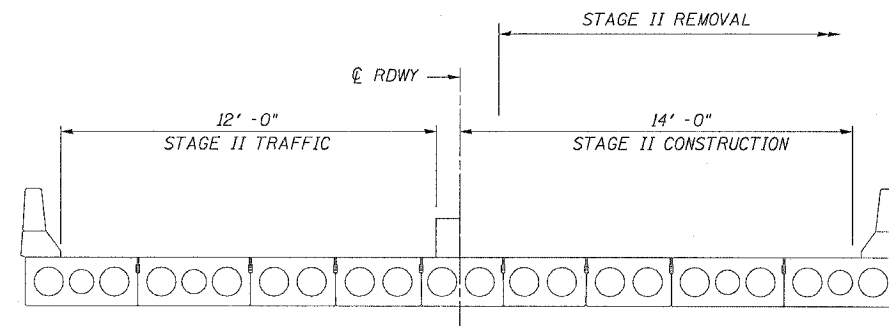
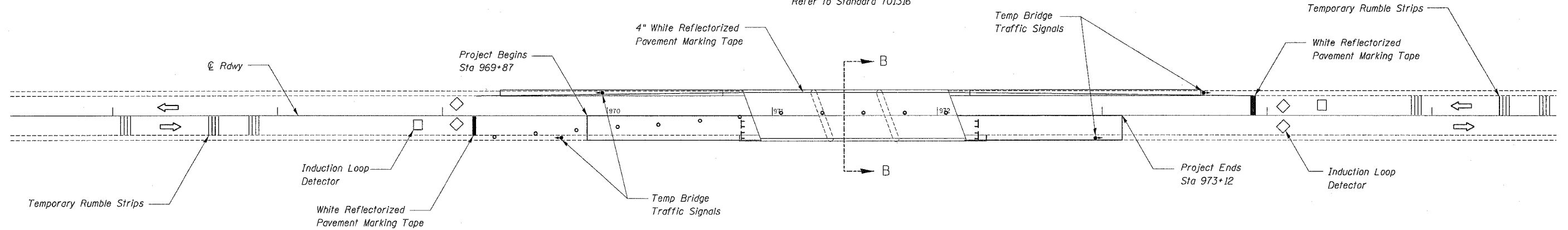
| Work Zone Pavement Marking Removal |                 | Sq. Ft. |
|------------------------------------|-----------------|---------|
| Stage II                           | Temporary Lines | 272     |
| Total                              |                 | 272     |

| Traffic Control & Protection Std 701316 |  | Each |
|---|--|------|
| Entire Project                          |  | 1    |
| Total                                   |  | 1    |

| Temporary Rumble Strips |  | Each |
|-------------------------|--|------|
| Standard 701316         |  | 1    |
| Total                   |  | 1    |

### Stage II Traffic Control

Refer to Standard 701316



SECTION B-B

### Stage II Construction

Relocate Traffic Control Devices to Stage II using Standard 701301 or 701306.

Move traffic to Stage II Traffic Lanes. Complete Stage II Construction.

Remove Standard 701316 using Standard 701201

| Short Term Pavement Marking 4"          |  | Foot |
|---|--|------|
| Temporary Centerline Skip Dash (Yellow) |  | 44   |
| Total                                   |  | 44   |
| Paint Pavement Marking - Line 4"        |  | Foot |
| Centerline Skip Dash (Yellow)           |  | 82   |
| Left & Right Edge Line (White)          |  | 944  |
| Total                                   |  | 1026 |

TRAFFIC CONTROL PLAN  
 US 52 OVER ELKHORN CREEK  
 FAS ROUTE 2079 (US 52)  
 SECTION 16BR-M  
 OGLE COUNTY  
 STRUCTURE NUMBER 071-0070