

STATE OF ILLINOIS  
DEPARTMENT OF TRANSPORTATION

**TEMPORARY CONCRETE BARRIER 70400100**

Location	Foot
STA. 148+02 TO STA. 136+05	1197
Total 1197 Foot	

**PAVEMENT MARKING REMOVAL 78300105**

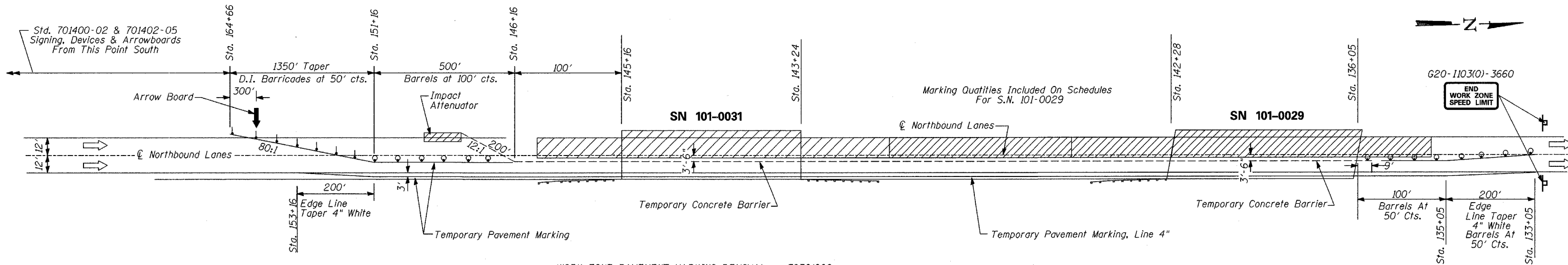
Location	Color	Foot
RT. STA. 153+16 TO RT. STA. 133+05	White	2011
Total 2011 Foot		

**IMPACT ATTENUATORS (NON-REDIRECTIVE), TEST LEVEL 3 20030150**

Location	Each
STA. 148+16	1
Total 1 Each	

ROUTE NO.	SECTION	COUNTY	DATE	SHEET
	*	Winnebago	36	5

\* (5VB, 5HB, 1-2HB)M



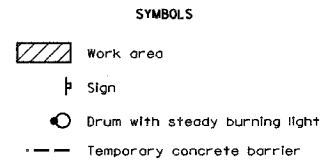
**TEMPORARY PAVEMENT MARKING - LINE 4" 70300220**

Location	Color	Foot
LT. STA. 164+66 TO STA. 133+05	Yellow	3161
RT. STA. 153+16 TO RT. STA. 133+05	White	2011
Total 5172 Foot		

**WORK ZONE PAVEMENT MARKING REMOVAL 70301000**

Location	Color	Sq. Ft.
LT. STA. 164+66 TO RT. STA. 146+16	Yellow	617
RT. STA. 153+16 TO RT. STA. 145+16	White	267
RT. STA. 143+24 TO RT. STA. 142+28	White	32
RT. STA. 136+05 TO RT. STA. 133+05	White	100
RT. STA. 135+96 TO STA. 133+05	Yellow	97
Total 1113 Sq. Ft.		

**STAGE I PLAN**  
PRINCIPAL TRAFFIC CONTROL STANDARDS:  
701400-02 & 701402-05  
NOT TO SCALE



**IMPACT ATTENUATORS, RELOCATE (NON-REDIRECTIVE), TEST LEVEL 3 20030350**

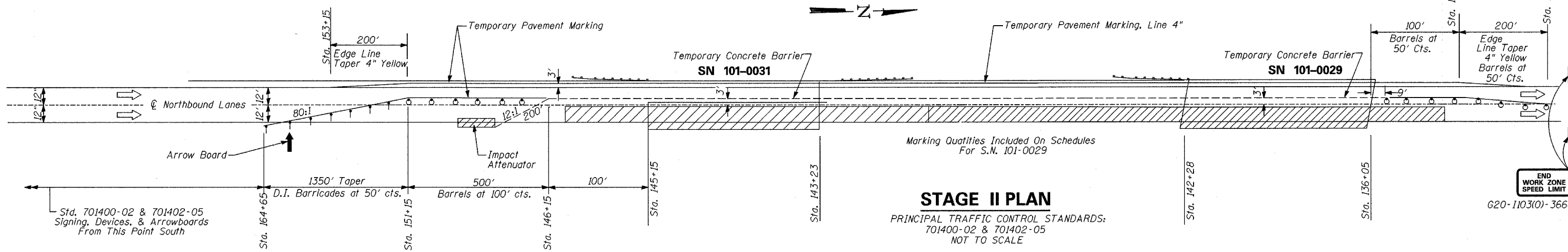
Location	Each
STA. 148+16	1
Total 1 Each	

**WORK ZONE PAVEMENT MARKING REMOVAL 70301000**

Location	Color	Sq. Ft.
LT. STA. 153+15 TO LT. STA. 133+05	Yellow	670
RT. STA. 164+65 TO STA. 133+05	White	1053
Total 1723 Sq.Ft.		

**RELOCATE TEMPORARY CONCRETE BARRIER 70400200**

Location	Foot
STA. 148+02 TO STA. 136+05	1197
Total 1197 Foot	



**PAVEMENT MARKING REMOVAL 78300105**

Location	Color	Foot
LT. STA. 153+15 TO LT. STA. 133+05	Yellow	2010
Total 2010 Foot		

**TEMPORARY PAVEMENT MARKING - LINE 4" 70300220**

Location	Color	Foot
LT. STA. 153+15 TO LT. STA. 133+05	Yellow	2010
RT. STA. 164+65 TO STA. 133+05	White	3160
Total 5170 Foot		

**PERMANENT PAVEMENT MARKING - LINE 4" 78007110**

Location	Color	Foot
LT. STA. 153+15 TO LT. STA. 133+05	Yellow	2010
RT. STA. 153+16 TO RT. STA. 133+05	White	2011
STA. 146+16 TO STA. 135+05	White	278
Total 4299 Foot		

**STAGE II PLAN**  
PRINCIPAL TRAFFIC CONTROL STANDARDS:  
701400-02 & 701402-05  
NOT TO SCALE

DESIGNED
CHECKED
DRAWN
CHECKED

**TRAFFIC CONTROL PLAN**  
F.A.P. RTE. 303 & F.A.P. RTE 738  
(IL 251) OVER RAILROAD  
SECTION (5VB, 5HB, 1-2HB)M  
WINNEBAGO COUNTY  
SN 101-0029 & SN 101-0031