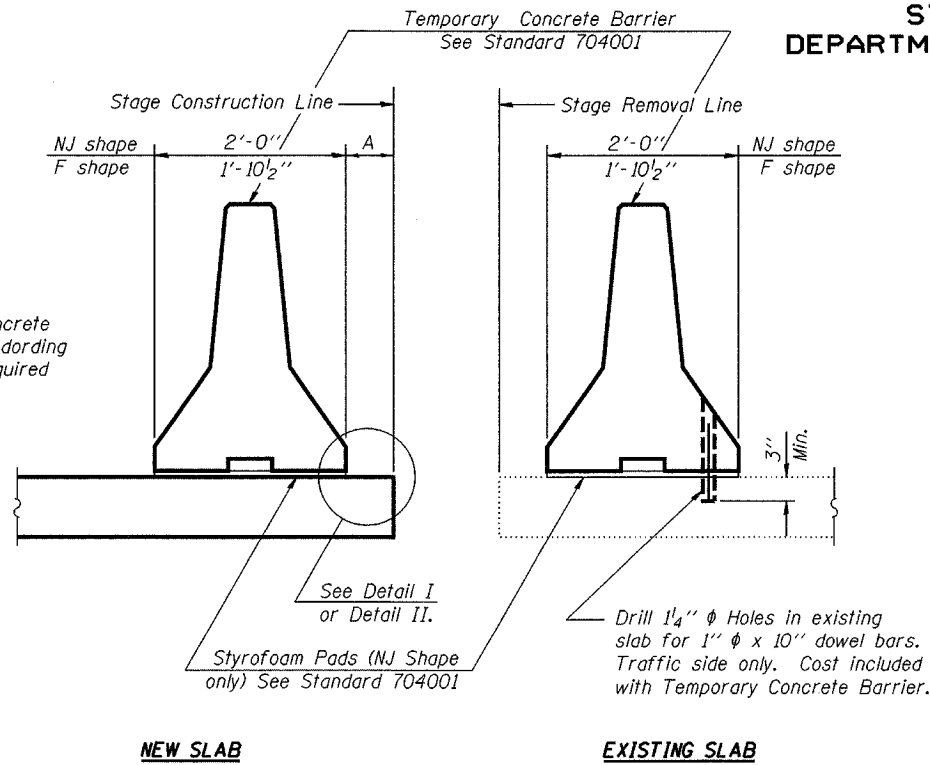


STATE OF ILLINOIS
DEPARTMENT OF TRANSPORTATION

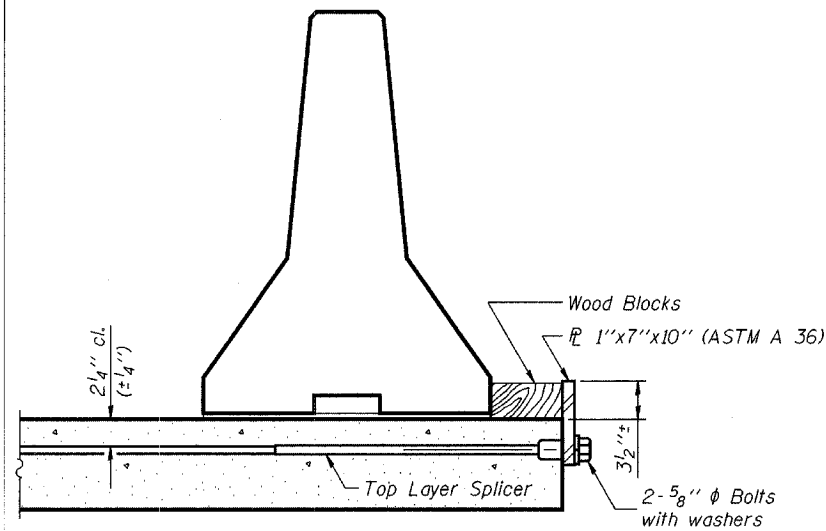
ROUTE NO.	SECTION	COUNTY	SHEET NO.	TOTAL SHEETS
	*	Winnebago	36	36
FED. ROAD DIST. NO. 7	ILLINOIS	FED. AID PROJECT		

* Section (5VB, 5HB, 1-2HB)M (A)



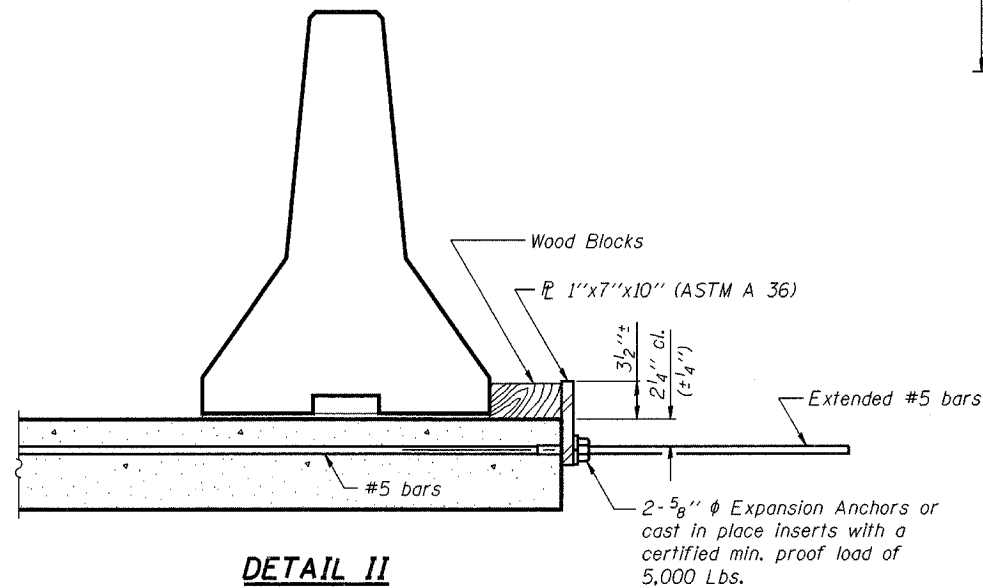
When "A" is 3'-6" or less, the temporary concrete barrier shall be Anchored to the new slab according to Detail I or Detail II. No anchorage is required when "A" is greater than 3'-6".

SECTIONS THRU SLAB



DETAIL I

The 1"x7"x10" Plate shall not be removed until Stage II Construction forms and reinforcement bars are in place.

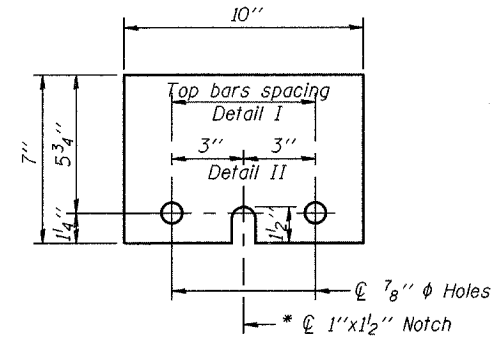


DETAIL II

The 1"x7"x10" Plate shall not be removed until Stage II Construction forms and all reinforcement bars are in place and the concrete is ready to be placed.

NOTES

- Detail I - With Bar Splicer or Couplers:
Connect one (1) 1"x7"x10" steel \bar{P} to the top layer of couplers with 2-5/8" ϕ bolts screwed to coupler at approximate \bar{C} of each barrier panel.
 - Detail II - With Extended Reinforcement Bars:
Connect one (1) 1"x7"x10" steel \bar{P} to the concrete slab with 2-5/8" ϕ Expansion Anchors or cast in place inserts spaced between the top layer of reinforcement at approximate \bar{C} of each barrier panel.
- Cost of anchorage is included with Temporary Concrete Barrier.



\bar{P} 1"x7"x10"

* Required only with Detail II

DESIGNED
CHECKED
DRAWN
CHECKED

**TEMPORARY CONCRETE BARRIER
FOR STAGE CONSTRUCTION**
F.A.P. Route 303 & F.A.P. Route 73
SECTION (5VB, 5HB, 1-2HB)M
WINNEBAGO COUNTY