

F.A.P. RTE.	SECTION	COUNTY	TOTAL SHEETS	SHEET NO.
318	(06-2HB-5)M	BUREAU	--3--	1

INDEX OF SHEETS

1. Cover Sheet, Summary of Quantities
2. Plan and Elevation Structure No. 006-0085
3. Repair Details Structure No. 006-0085

STANDARDS

- 701101 Off-Road Operations, Multilane, Less Than 4.5 m (15') Away, For Speeds > or = 45 MPH
 701400 Approach to Lane Closure, Freeway/Expressway
 701406-03 Lane Closure, Freeway/Expressway, Day Operations Only
 702001-04 Traffic Control Devices

SUMMARY OF QUANTITIES

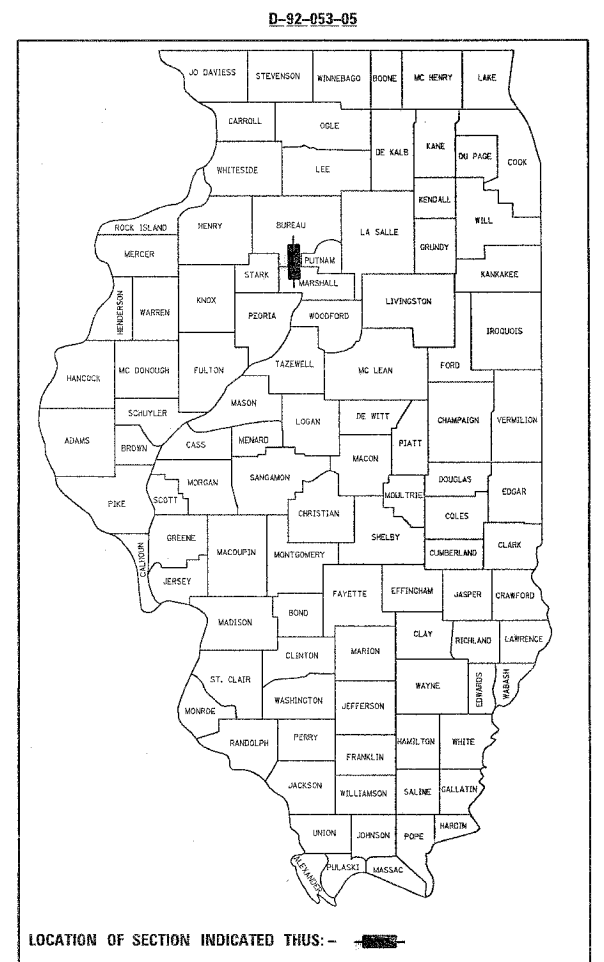
Code Number	Pay Item	Unit	Quantity
			SFTY-2A
50501130	STRUCTURAL STEEL REPAIR	POUND	500
67000400	ENGINEER'S FIELD OFFICE, TYPE A	CAL MO	1
67100100	MOBILIZATION	L SUM	1
70100305	TRAFFIC CONTROL AND PROTECTION, STANDARD 701400	L SUM	1
70100700	TRAFFIC CONTROL AND PROTECTION, STANDARD 701406	L SUM	1

**STATE OF ILLINOIS
 DEPARTMENT OF TRANSPORTATION
 DIVISION OF HIGHWAYS**

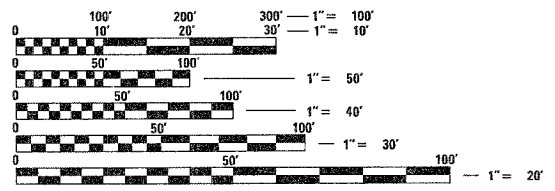
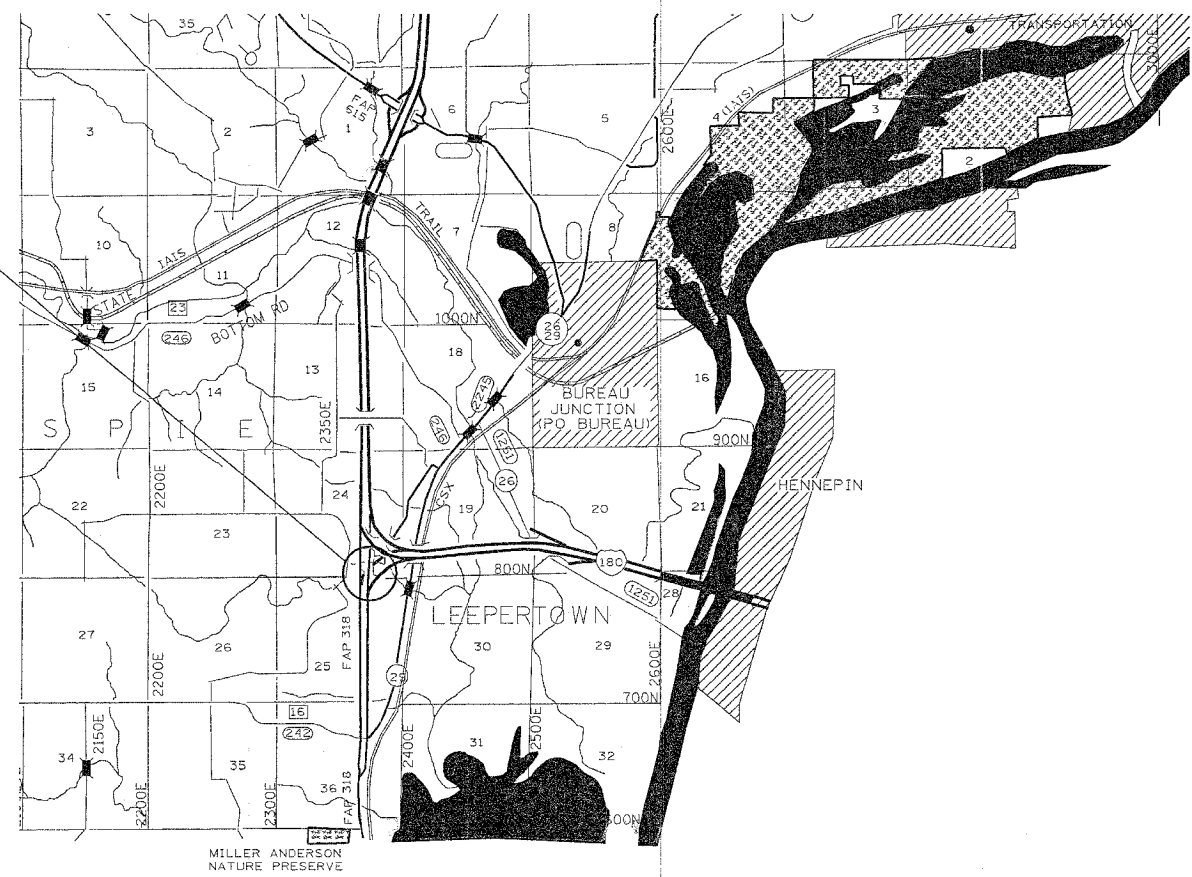
**PROPOSED
 HIGHWAY PLANS**

**FAP ROUTE 318 (ILLINOIS ROUTE 29 [NB])
 SECTION (06-2HB-5)M
 BUREAU COUNTY**

C-92-055-05



PROJECT LOCATION
 STRUCTURE NO 006-0085



FULL SIZE PLANS HAVE BEEN PREPARED USING STANDARD ENGINEERING SCALES. REDUCED SIZED PLANS WILL NOT CONFORM TO STANDARD SCALES. IN MAKING MEASUREMENTS ON REDUCED PLANS, THE ABOVE SCALES MAY BE USED.

J.U.L.I.E.
 JOINT UTILITY LOCATION INFORMATION FOR EXCAVATION
 1-800-892-0123

CONTRACT NO. 64A92

STATE OF ILLINOIS
 DEPARTMENT OF TRANSPORTATION
 DIVISION OF HIGHWAYS

SUBMITTED Jan 26 2005

Gregory L. Mounts
 DEPUTY DIRECTOR OF HIGHWAYS, REGION ENGINEER

March 25, 20 05
Mike Hine
 ENGINEER OF DESIGN AND ENVIRONMENT

March 25, 20 05
Victor Maden
 DIRECTOR OF HIGHWAYS, CHIEF ENGINEER

**PRINTED BY THE AUTHORITY
 OF THE STATE OF ILLINOIS**