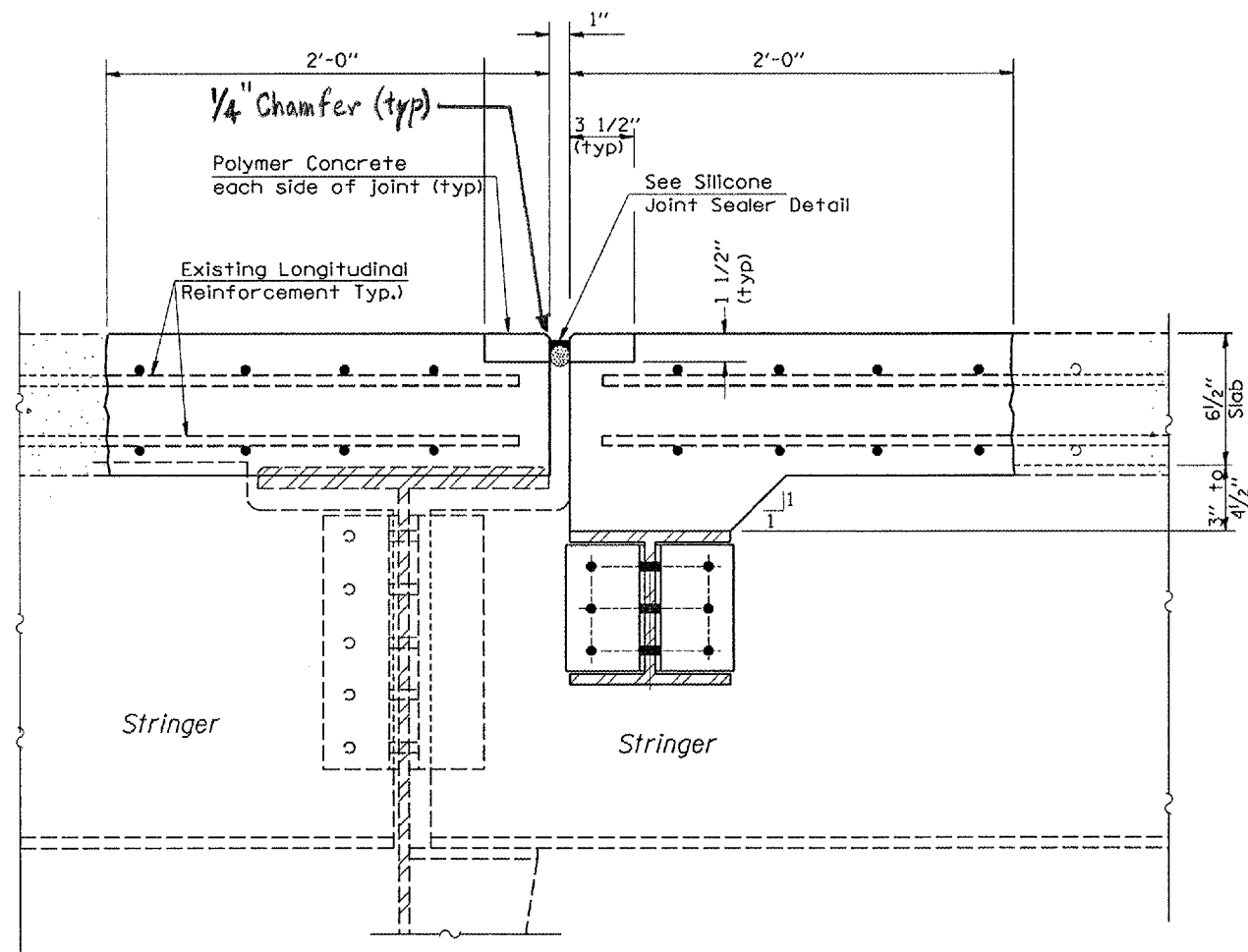
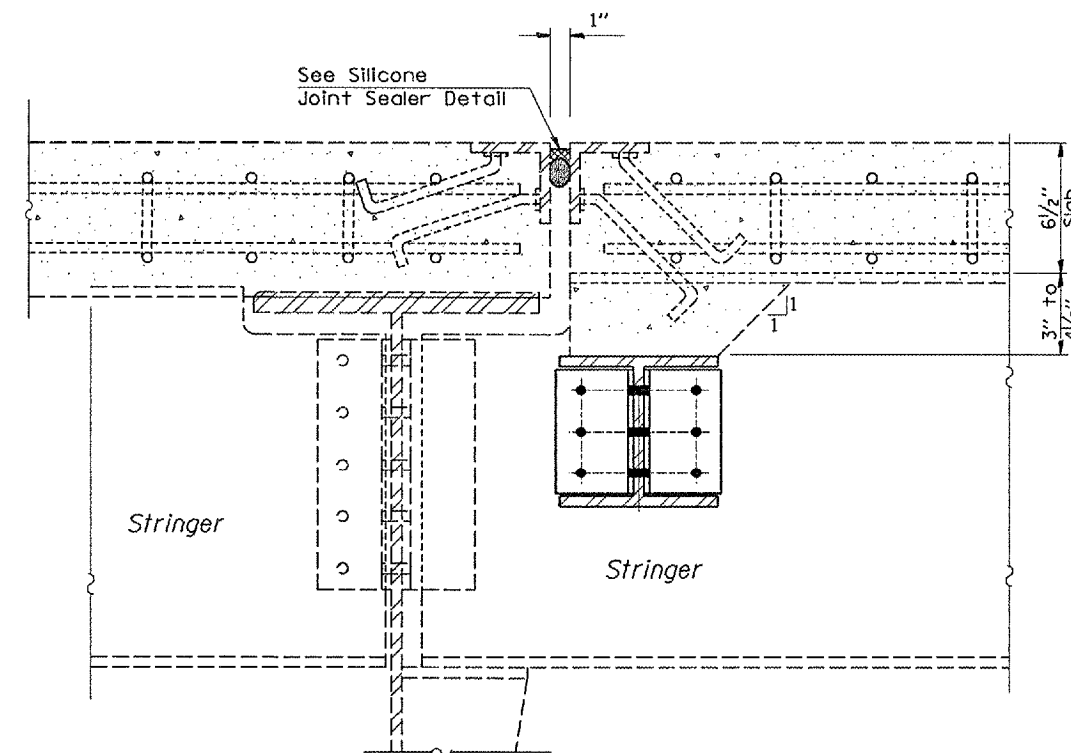


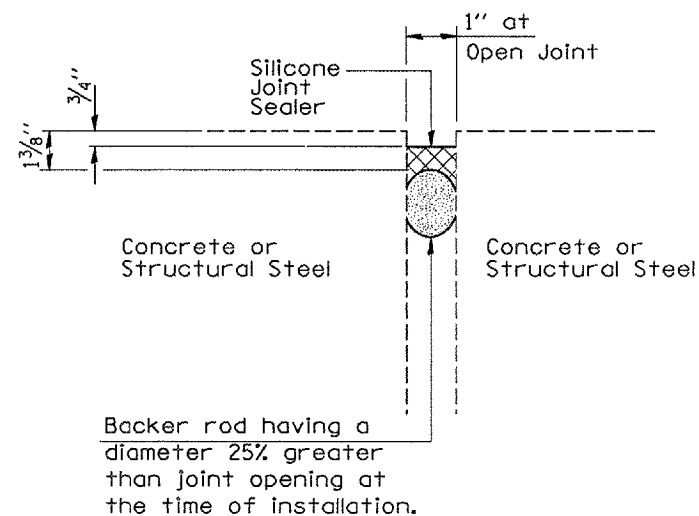
| F.A.S. RTE. | SECTION | COUNTY | TOTAL SHEETS | SHEET NO. |
|------------------------------|---------------|----------------------|--------------|-----------|
| 1279 | 10D,E,F,P11-3 | LASALLE | 19 | 11 |
| STA. 23+51 | | TO STA. 35+09 | | |
| FED. ROAD DIST. NO. ILLINOIS | | NON-FED. AID PROJECT | | |



JOINT SEAL DETAIL A
Looking West @ L15 & L4'



JOINT SEAL DETAIL B
Looking West @ L8'
Looking East at L4 & L8



SILICONE JOINT SEALER

| REVISIONS | |
|-----------|------|
| NAME | DATE |
| | |
| | |
| | |
| | |
| | |
| | |
| | |
| | |
| | |

ILLINOIS DEPARTMENT OF TRANSPORTATION
JOINT SEAL DETAILS
 EXISTING S.N. 050-0088
 IL 178 OVER ILLINOIS RIVER
 STATION 29+30
 SCALE: VERT. _____
 HORIZ. _____
 DATE 12/08/04
 DRAWN BY RLV
 CHECKED BY _____

cmain05/cm326/det011s.dgn