

F.A.I. SHEETS	SECTION	COUNTY	TOTAL SHEETS
57	D-3 BRIDGE PAINTING 2005-1	IROQUOIS	16
FED. ROAD DIST. NO.			ILLINOIS FED. AID PROJECT

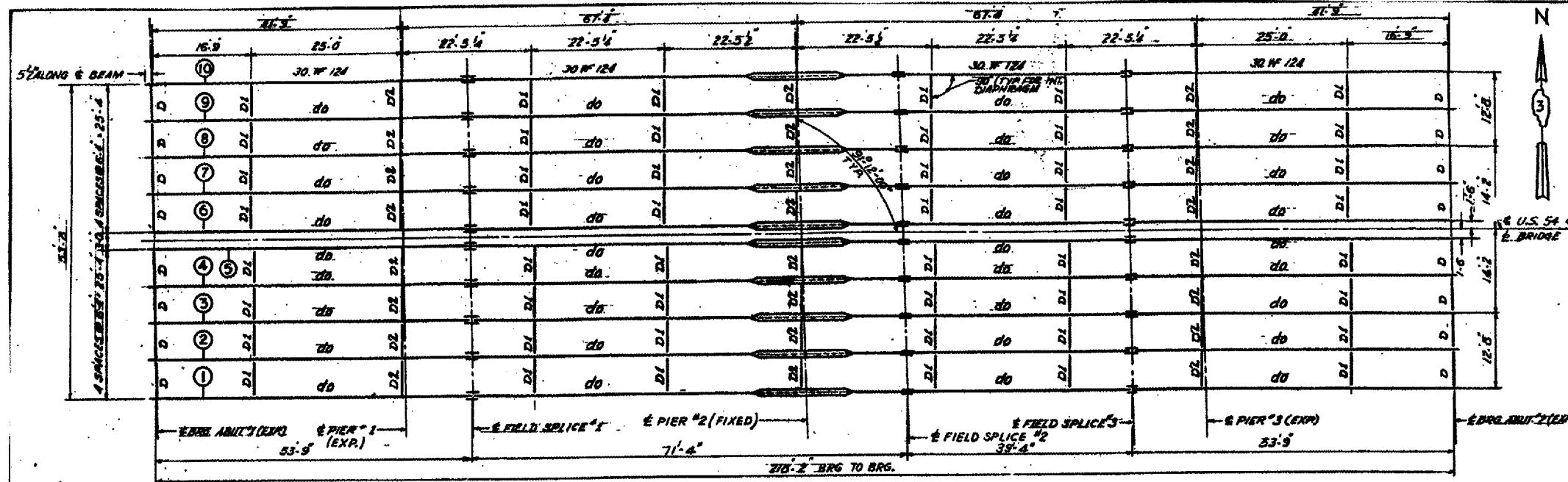
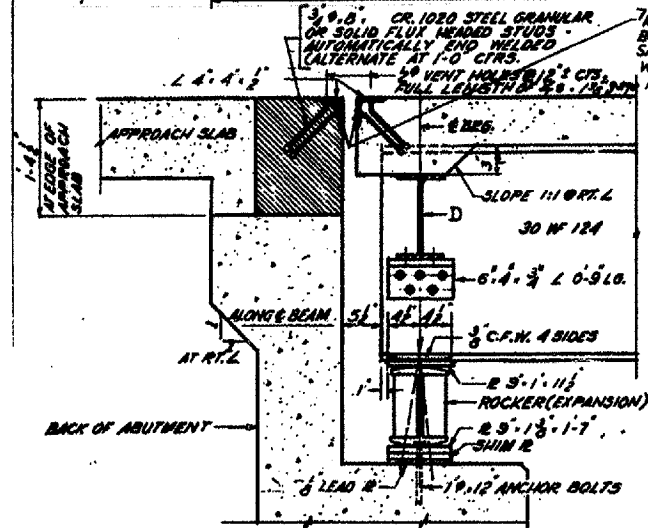
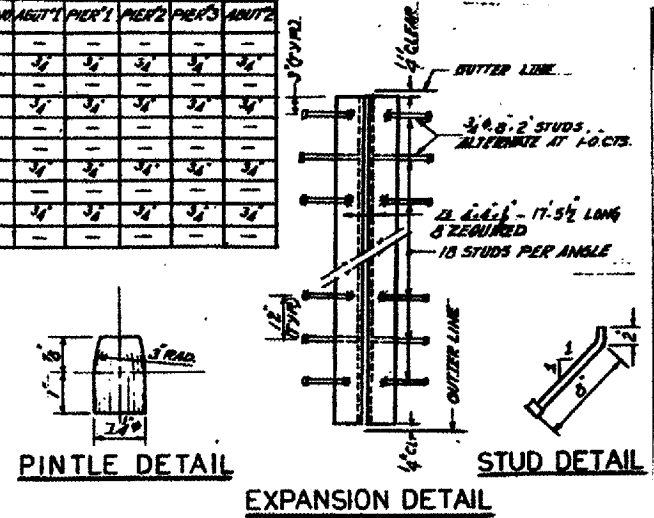
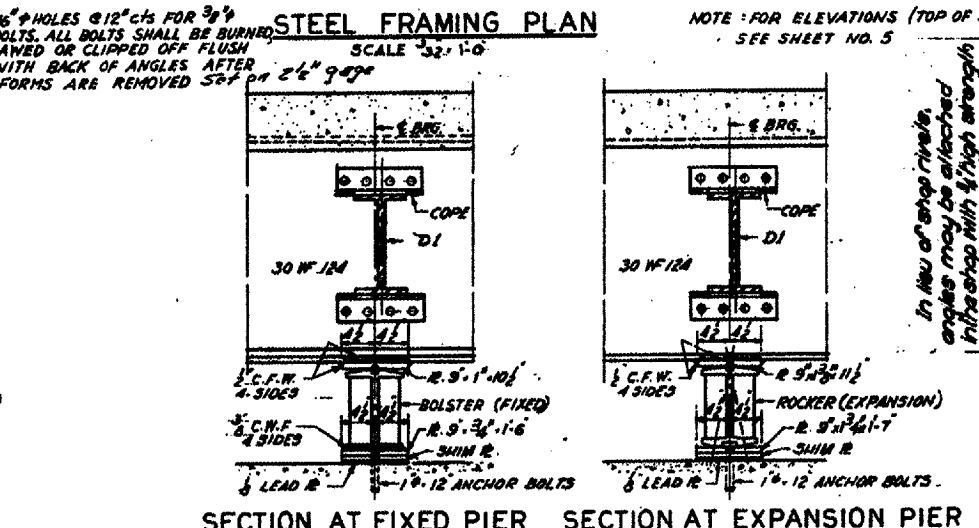


TABLE OF SHIM PLATES

BEAM NO.	ABUT 1	PIER 1	PIER 2	PIER 3	ABUT 2
1	-	-	-	-	-
2	1/2	1/2	1/2	1/2	1/2
3	-	-	-	-	-
4	1/2	1/2	1/2	1/2	1/2
5	-	-	-	-	-
6	-	-	-	-	-
7	1/2	1/2	1/2	1/2	1/2
8	-	-	-	-	-
9	1/2	1/2	1/2	1/2	1/2
10	-	-	-	-	-

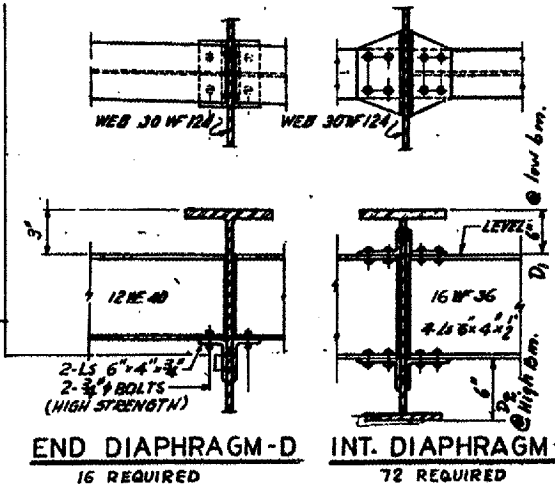


SECTION AT ABUTMENT SCALE: 1/4\"/>

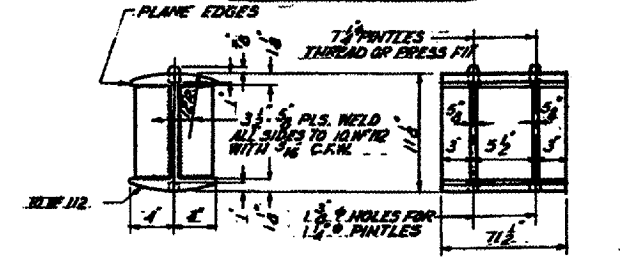


SECTION AT FIXED PIER SCALE: 1/4\"/>

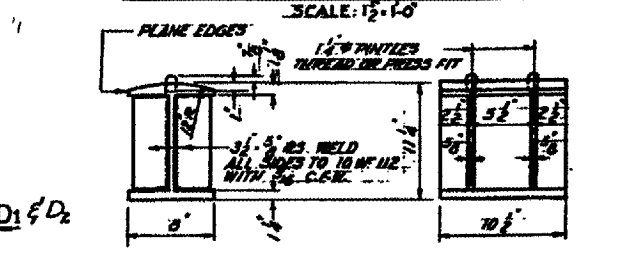
SECTION AT EXPANSION PIER SCALE: 1/4\"/>



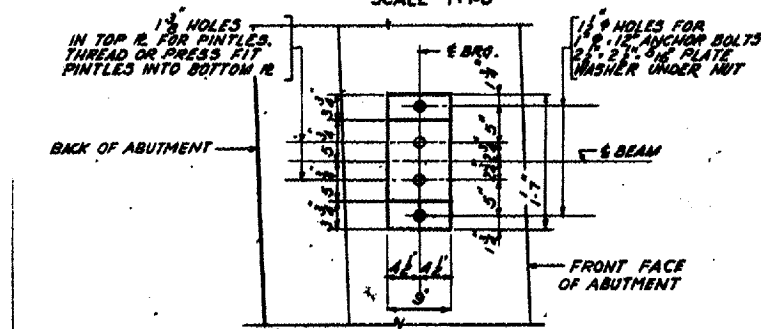
END DIAPHRAGM-D 16 REQUIRED  
INT. DIAPHRAGM-D1 & D2 72 REQUIRED



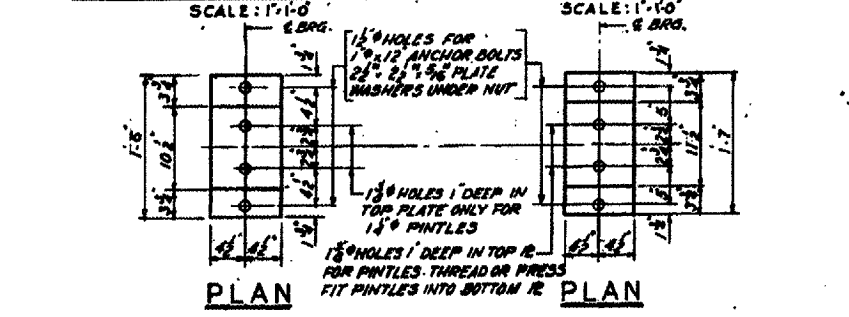
ROCKER DETAIL AT EXP. BEARING SCALE: 1/2\"/>



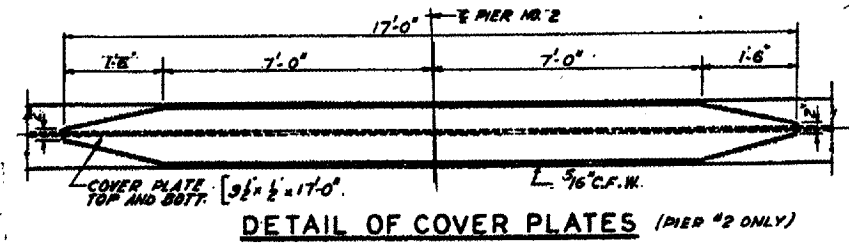
BOLSTER DETAIL AT FIXED BEARING



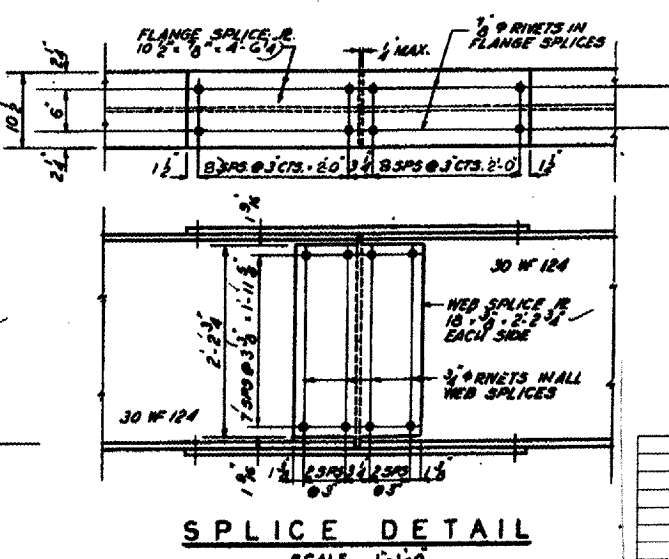
PLAN SCALE: 1/4\"/>



PLAN



DETAIL OF COVER PLATES (PIER #2 ONLY)



SPlice DETAIL SCALE: 1/4\"/>

NOTE: FOR SPlice DETAIL ALL RIVET HOLES TO BE REAMED WITH ALL PARTS ASSEMBLED TO GRADE AND ALL PARTS MATCH MARKED

**Bearings and Anchorages**  
The location of the anchor bolts and vertical alignment of the expansion bearings shall be adjusted to the temperature of the time of erection. See Art. 5.4.907

DESIGNED BY: A.M.  
DRAWN BY: A.M.  
CHECKED BY: P.X.  
IN CHARGE: P.X.

Anchor bolts shall be grouted into drilled holes after bearings are in place, or bolts at fixed pier may be bolt into the masonry.

REVISIONS	NAME	DATE

ILLINOIS DEPARTMENT OF TRANSPORTATION  
**EXISTING STRUCTURE PLANS FOR INFORMATION ONLY**  
**BRIDGE NO. 1**  
**S.N. 038-0048**

VERT. SCALE: HORIZ.  
DATE: 01/10/05

DRAWN BY: RW  
CHECKED BY:  

Date: 01/10/05  
bridgepainting05/2005-1/details.dgn