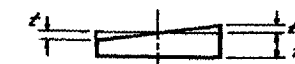
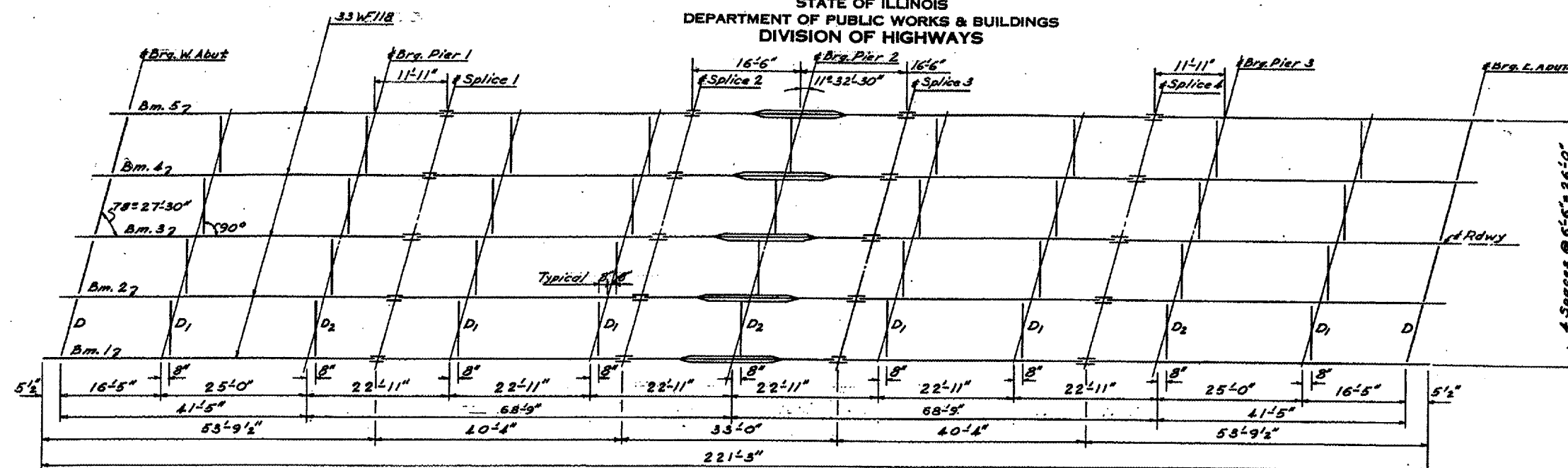


F.A.I. RTE.	SECTION	COUNTY	TOTAL SHEET NO.
57	D-3 BRIDGE PAINTING 2005-1	IROQUOIS	16
FED. ROAD DIST. NO.		ILLINOIS FED. AID PROJECT	

STATE OF ILLINOIS
DEPARTMENT OF PUBLIC WORKS & BUILDINGS
DIVISION OF HIGHWAYS

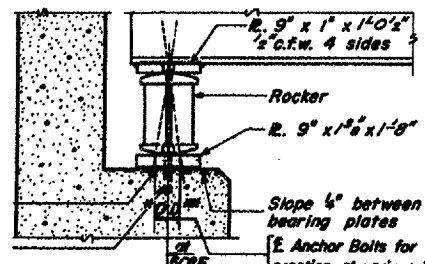


TOP PLATE DETAIL

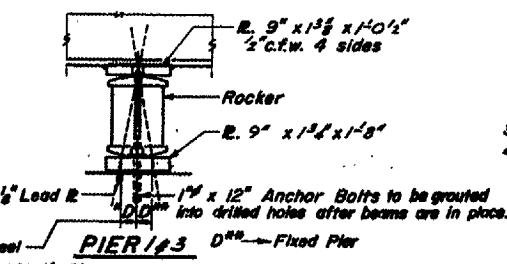
Table of 1/2"

W/L Abut	Pier 1 & 3	Pier 2
t ₁	t ₁	t ₁
1"	1 1/8"	1 1/2"

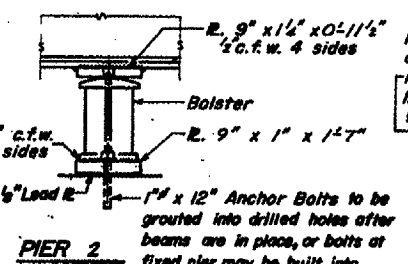
STEEL FRAMING PLAN



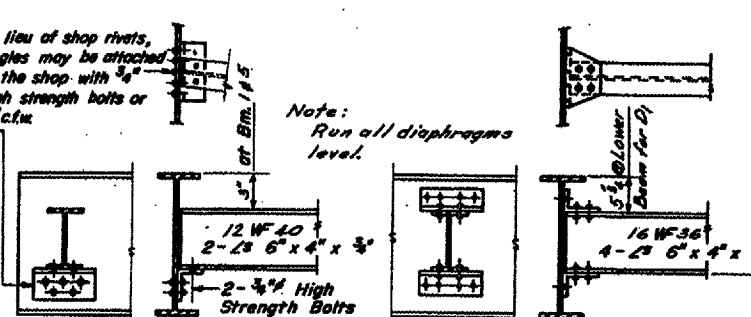
SECTION AT ABUTMENT



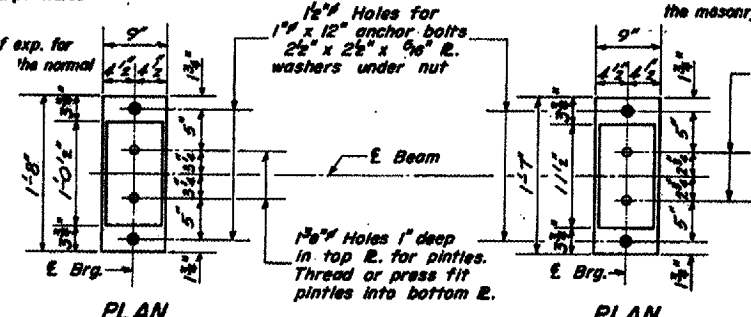
PIER 1 & 3



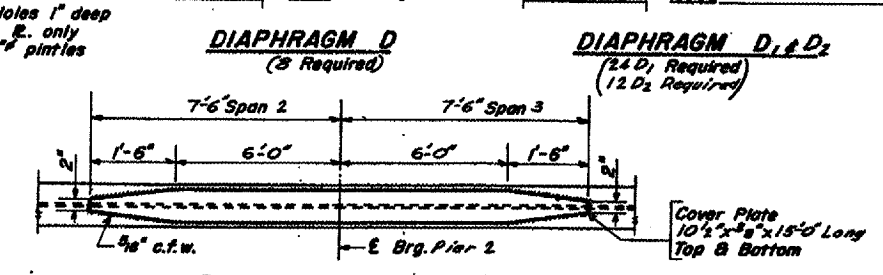
PIER 2



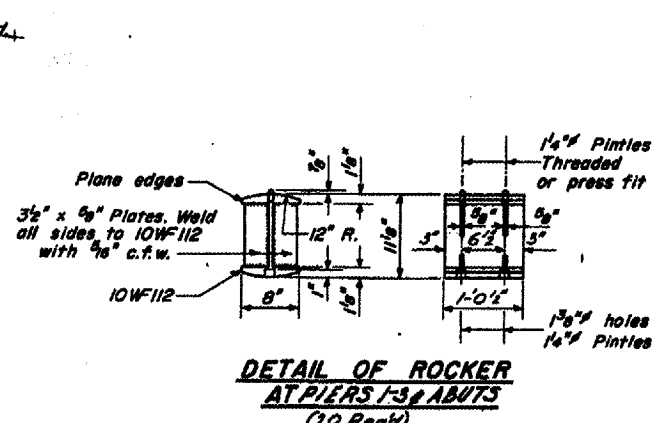
DIAPHRAGM D (3 Required) and DIAPHRAGM D1 & D2 (24 D1 Required, 12 D2 Required)



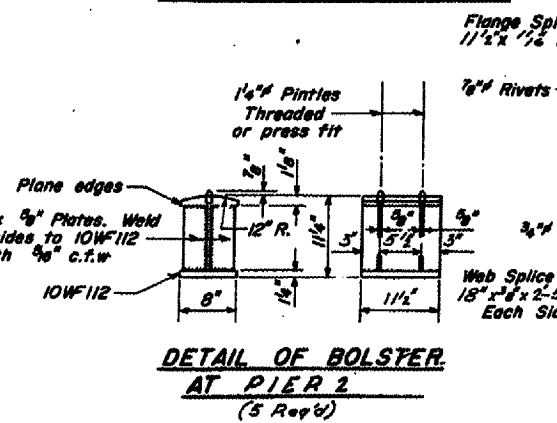
PLAN



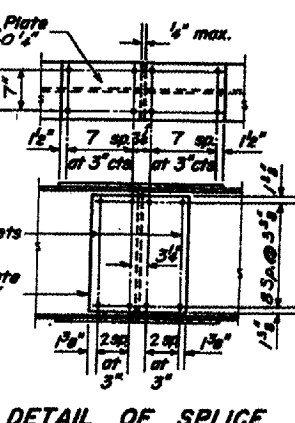
DETAIL OF COVER PLATE



DETAIL OF ROCKER AT PIERS 1-3 ABUTS (20 Req'd)



DETAIL OF BOLSTER AT PIER 2 (5 Req'd)



DETAIL OF SPLICE

REVISIONS	
NAME	DATE

ILLINOIS DEPARTMENT OF TRANSPORTATION
**EXISTING STRUCTURE PLANS
FOR INFORMATION ONLY**
BRIDGE NO. 2
S.N. 038-0082

SCALE: VERT. HORIZ. DATE 01/10/05

DRAWN BY RW
CHECKED BY

Date: 01/10/05
bridgepaint05/2005-1/details.dgn