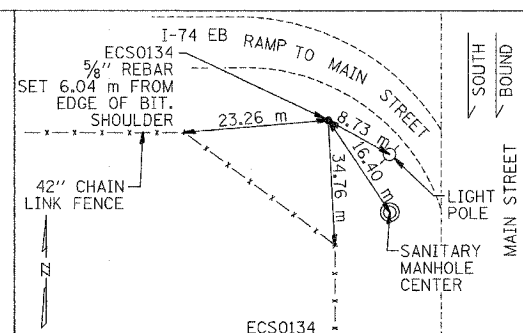
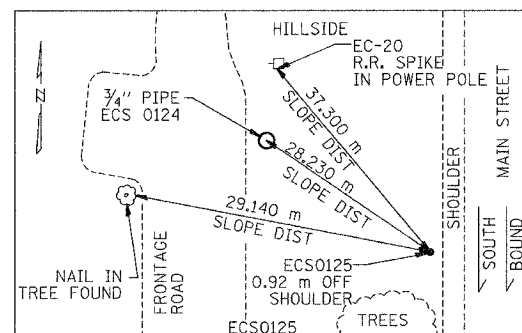
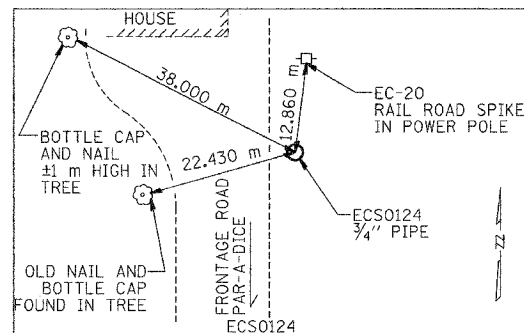
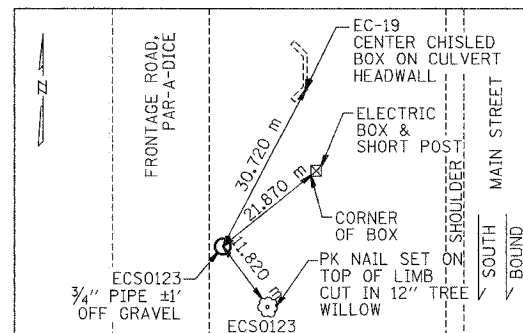
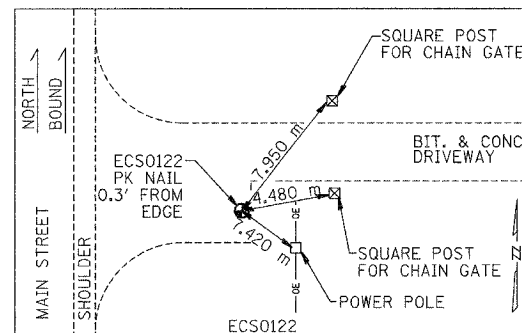
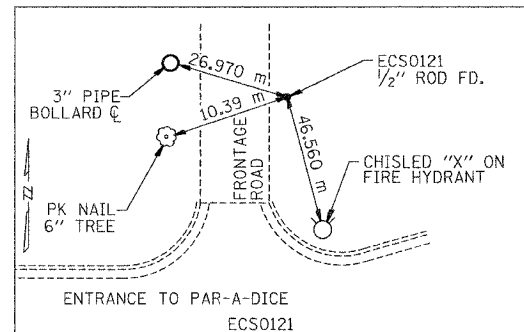
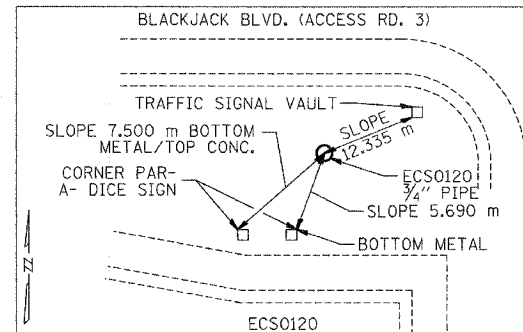
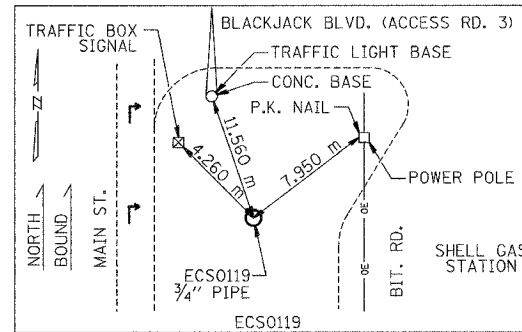


F.A.I. RTE.	SECTION	COUNTY	TOTAL SHEETS	SHEET NO.
74	*	TAZEWELL	1366	117
STA.		TO STA.		
FED. ROAD DIST. NO.		ILLINOIS FED. AID PROJECT		

*(90-IDR-2;90(I3,14,14-IDR-1



HORIZONTAL CONTROL POINT DATA

CONTROL POINT NO.	NORTHING	EASTING
TP1344	444,839.100	749,831.904
TP1345	444,126.266	750,435.923
TP1351	444,348.297	750,174.560
TP1357	443,811.792	750,458.754
ECS0103	444,365.451	749,889.454
ECS0105	444,746.357	750,369.594
ECS0106	444,796.620	750,340.517
ECS0107	444,849.924	750,435.251
ECS0108	444,839.566	750,491.221
ECS0109	444,937.081	750,553.097
ECS0110	444,928.652	750,618.298
ECS0111	445,064.460	750,676.119
ECS0112	444,025.391	750,719.220
ECS0113	445,149.429	750,681.401
ECS0114	445,220.556	750,793.551
ECS0115	445,102.404	750,865.283
ECS0116	445,194.974	750,858.152
ECS0117	445,225.551	750,976.300
ECS0118	445,266.811	750,951.627
ECS0119	445,363.973	751,163.022
ECS0120	445,414.848	751,129.534
ECS0121	445,470.855	751,187.494
ECS0122	445,547.684	751,381.950
ECS0123	445,595.857	751,363.040
ECS0124	445,732.468	751,527.340
ECS0125	445,705.183	751,524.066
ECS0134	444,565.167	750,037.247
EADBRGD001	444,571.955	750,239.040
EADBRGD002	444,647.887	750,304.113

BENCHMARK DATA

NUMBER	DESCRIPTION	ELEVATION
BM30	CHISELED "4" ON E CAP BOLT FH, 30'± E OF HOLIDAY INN EAST PEORIA SIGN & 80'± NW ♂ RT. 116	142.878
BM19	CHISELED "L" ON SE CORNER OF NW CRASHWALL OF BRIDGE, WESTBOUND I-74 OVER WASHINGTON ST. IN EAST PEORIA	143.777
TBM15	CHISELED "L" ON NW CORNER OF LIGHT POLE BASE, I-74 EASTBOUND ON-RAMP FOR WASHINGTON ST.	143.055
EC3	NW CAP BOLT FH @ SW OF COMMON ENT TO WALGREENS AND BOB EVANS NEAR CAMP ST AND MAIN ST	142.710
EC4	NW CAP BOLT FH E. SIDE OF MAIN SR BTWN COMMERCIAL ENT TO MUTUAL WHEEL & PRIVATE ENT TO THE NORTH (184m S OF EC6)	145.957
EC5	CHISELED SQUARE ON NE COR OF MOST SOUTHERLY STOOP @ FEDERAL WAREHOUSE BTWN ALTORFER & NATIONAL ST	141.857
EC6	N CAP BOLT FH @ E QUAD SOUTHERLY INT MAIN ST @ CATERPILLAR TRAIL (ACROSS FROM NATIONAL ST)	144.956
EC7	CHISELED SQ ON STEP/FOOTING 28m NE OF MOST SOUTHERLY CORNER OF BLDG @ N QUAD INT MAIN AND NATIONAL ST	142.202
EC8	NW CAP BOLT FH BTWN MAIN ST & CATERPILLAR TRAIL (145m NORTH OF EC6)	146.055
EC9	N CAP BOLT FH IN FEDERAL WAREHOUSE PARKING LOT JUST NORTH OF NATIONAL ST	141.625
EC10	N CAP BOLT FH IN FEDERAL WAREHOUSE PARKING LOT NORTH OF EC9 SOUTH OF EC11	141.152
EC11	N CAP BOLT FH IN FEDERAL WAREHOUSE PARKING LOT NOTH OF EC10, NEAR ECS0113	140.544
EC12	NW CAP BOLT FH BTWN MAIN ST & CATERPILLAR TRAIL (153m NORTH OF EC8)	146.869
EC13	NW CAP BOLT FH IN ISLAND IN HAMPTON INN PARKING LOT NEAR ECS0116	140.038
EC14	N CAP BOLT FH BTWN MAIN ST & CATERPILLAR TRAIL DIRECTLY S. OF CUL-DE-SAC @ HAMPTON INN PARKING LOT	141.249
EC15	N CAP BOLT FH @ NORTHEASTERLY EDGE OF CUL-DE-SAC @ HAMPTON INN PARKING LOT	140.301
EC16	SW CAP BOLT FH BTWN MAIN ST & CATERPILLAR TRAIL ACROSS FROM MOST SOUTHERLY ENT TO SHELL STATION	144.731
EC17	NW CORNER CONC SLAB OF TRANSFORMER PAD @ SW QUAD INT OF MAIN ST & BLACKJACK BLVD	141.889
EC18	RR SPIKE IN PP E. QUAD INT OF MAIN ST & PRIVATE ENT JUST NORTH OF "WIESE" COMMERCIAL BLDG	147.305
EC19	CHISELED SQ ON HEADWALL EAST OF MAIN ST NORTH OF BLACKJACK BLVD	142.976
EC20	NAIL IN PP NEAR FIRST HOUSE NORTH OF BLACKJACK BLVD EAST OF MAIN ST	142.278
EC221	NW CAP BOLT FH BTWN MAIN ST AND CATERPILLAR TRAIL BTWN EC12 & EC14	146.263

REVISIONS	
NAME	DATE

ILLINOIS DEPARTMENT OF TRANSPORTATION
 REFERENCE TIES & BENCHMARKS
 WESTBOUND I-74
 ILL. 116 - U.S. 150 - MAIN ST.

