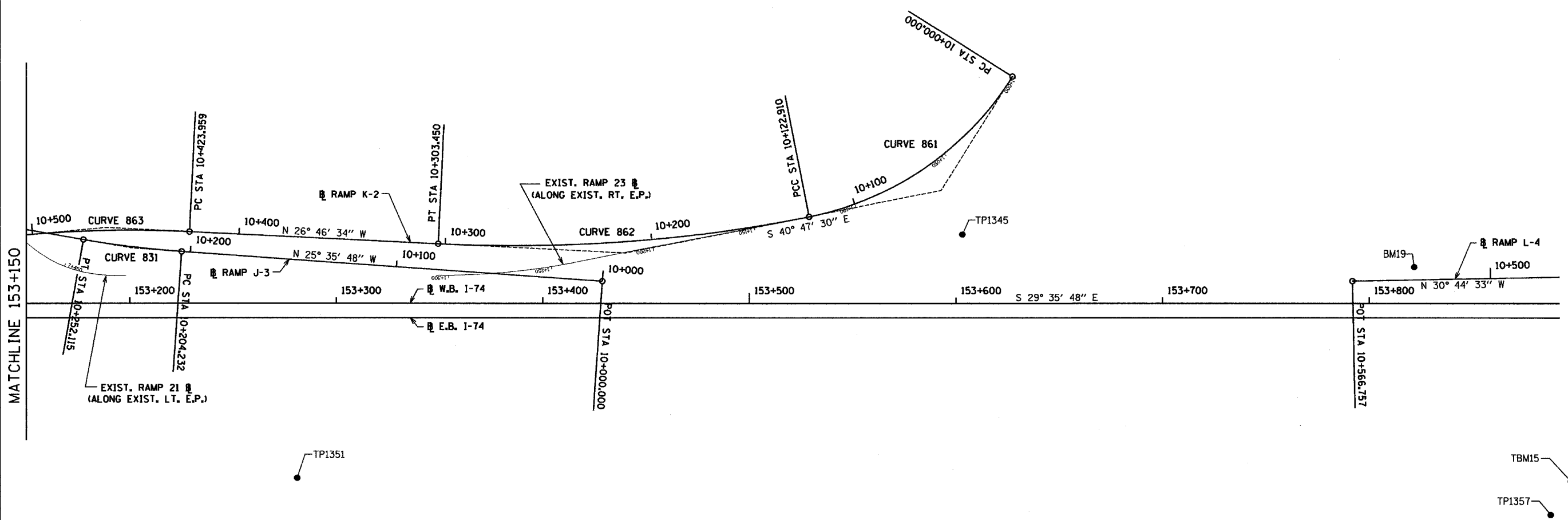
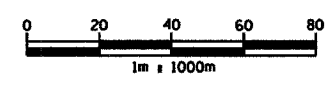
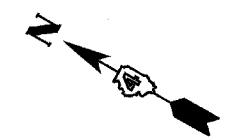


W:\06_02_04\06_02_04_002\02\02_04_002_02_04_002_02_04_002_02_04_002.dwg

68201

F.A.I. RTE.	SECTION	COUNTY	TOTAL SHEETS	SHEET NO.
74	90-10R-29013,14,15-1R-1	TAZEWELL	1366	119
STA. 153+150.000 TO STA. 153+892.180				
FED. ROAD DIST. NO. 4 ILLINOIS FED. AID PROJECT				



PROP. CURVE 831
 PI STA = 10+228.196
 N 444472.468
 E 750231.584
 $\Delta = 6^\circ 05' 48''$ (RT)
 R = 450.000 m
 T = 23.964 m
 L = 47.883 m
 E = 0.638 m
 S.E. = 6.2%
 P.C. STA = 10+204.232
 N 444450.856
 E 750241.937
 P.T. STA = 10+252.115
 N 444495.058
 E 750223.585
 TRANSITION IN: 10+177 - 10+218
 TRANSITION OUT: 10+237 - 10+283

PROP. CURVE 861
 PI STA = 10+065.099
 N 444145.742
 E 750449.223
 $\Delta = 46^\circ 41' 46''$ (RT)
 R = 150.810 m
 T = 65.099 m
 L = 122.910 m
 E = 13.451 m
 S.E. = 7.8%
 P.C. STA = 10+000.000
 N 444142.889
 E 750514.260
 P.C.C. STA = 10+122.910
 N 444195.028
 E 750406.693
 TRANSITION IN: 9+969 - 10+016
 TRANSITION OUT: 10+102 - 10+123

PROP. CURVE 862
 PI STA = 10+213.633
 N 444263.713
 E 750347.423
 $\Delta = 14^\circ 00' 56''$ (RT)
 R = 738.047 m
 T = 90.723 m
 L = 180.540 m
 E = 5.555 m
 S.E. = 2.8%
 P.C.C. STA = 10+122.910
 N 444195.028
 E 750406.693
 P.T. STA = 10+303.450
 N 444344.708
 E 750306.552
 TRANSITION IN: 10+123 - 10+144
 TRANSITION OUT: 10+299 - 10+310

PROP. CURVE 863
 PI STA = 10+464.428
 N 444488.424
 E 750234.031
 $\Delta = 7^\circ 58' 57''$ (LT)
 R = 580.000 m
 T = 40.469 m
 L = 80.806 m
 E = 1.410 m
 S.E. = -4.4%
 P.C. STA = 10+423.959
 N 444452.295
 E 750252.262
 P.T. STA = 10+504.765
 N 444521.672
 E 750210.959
 TRANSITION IN: 10+385 - 10+443
 TRANSITION OUT: 10+486 - 10+544

NOTE:
 FOR COORDINATES OF "ECS" AND "TP" POINTS
 SEE REFERENCE TIES & BENCHMARK SHT.
 FOR BENCHMARK INFORMATION SEE
 REFERENCE TIES & BENCHMARK SHT.

SHEET 2 OF 4

REVISIONS	
NAME	DATE

ILLINOIS DEPARTMENT OF TRANSPORTATION
SCHEMATIC DRAWING
WESTBOUND I-74
STA. 153+150.000 TO
STA. 153+892.180
 DRAWN BY JEH
 CHECKED BY MLB
 DATE 12/20/04

