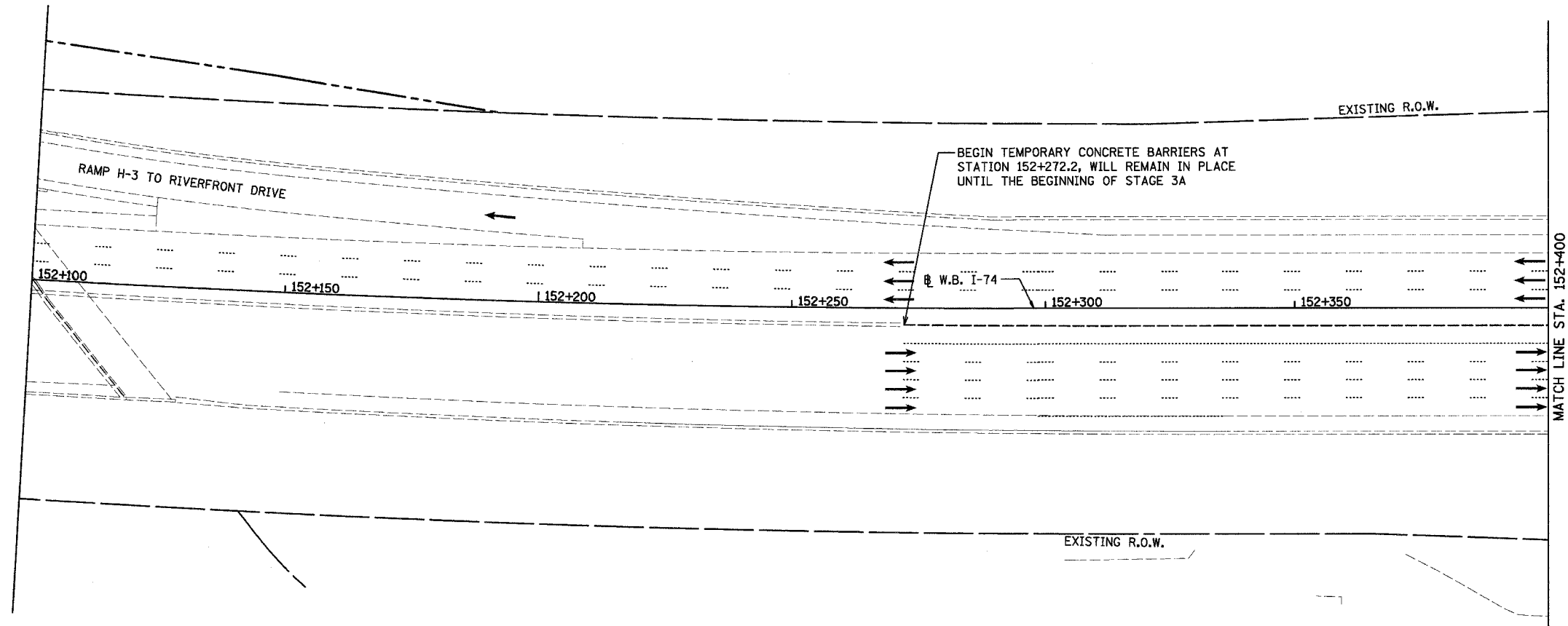
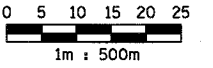
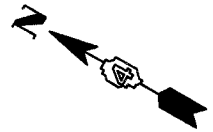


F.A.I. RTE.	SECTION	COUNTY	TOTAL SHEETS	SHEET NO.
74	(90-11R-2; 90(13,14,14-1)R-1	TAZEWELL	1366	121
STA. 152+100		TO STA. 152+400		
FED. ROAD DIST. NO. 4		ILLINOIS FED. AID PROJECT		



LEGEND	
	TEMPORARY PAVEMENT MARKING
	TRAFFIC FLOW DIRECTION
	TEMPORARY CONCRETE BARRIER

THIS MAINTENANCE OF TRAFFIC PLAN SHOWS SPECIAL TRAFFIC CONTROL IN THIS AREA. IN ADDITION TO THE SPECIAL TRAFFIC CONTROL DETAILS SHOWN, IDOT TRAFFIC CONTROL HIGHWAY STANDARDS SHALL APPLY WHERE APPLICABLE AND AS DIRECTED BY THE ENGINEER. SEE TRAFFIC NOTES ON THE CONSTRUCTION SEQUENCING SHEET FOR PRE STAGE 3A FOR APPLICABLE IDOT HIGHWAY STANDARDS.

REVISIONS	
NAME	DATE



ILLINOIS DEPARTMENT OF TRANSPORTATION
 F.A.I. ROUTE 74 (I-74)
 MAINTENANCE OF TRAFFIC
 STAGE 3A-1 (PRE STAGE 3)
 STA. 152+100 TO STA. 152+400 I-74.
 DRAWN BY KMO
 DATE 12/20/2004
 CHECKED BY RTG