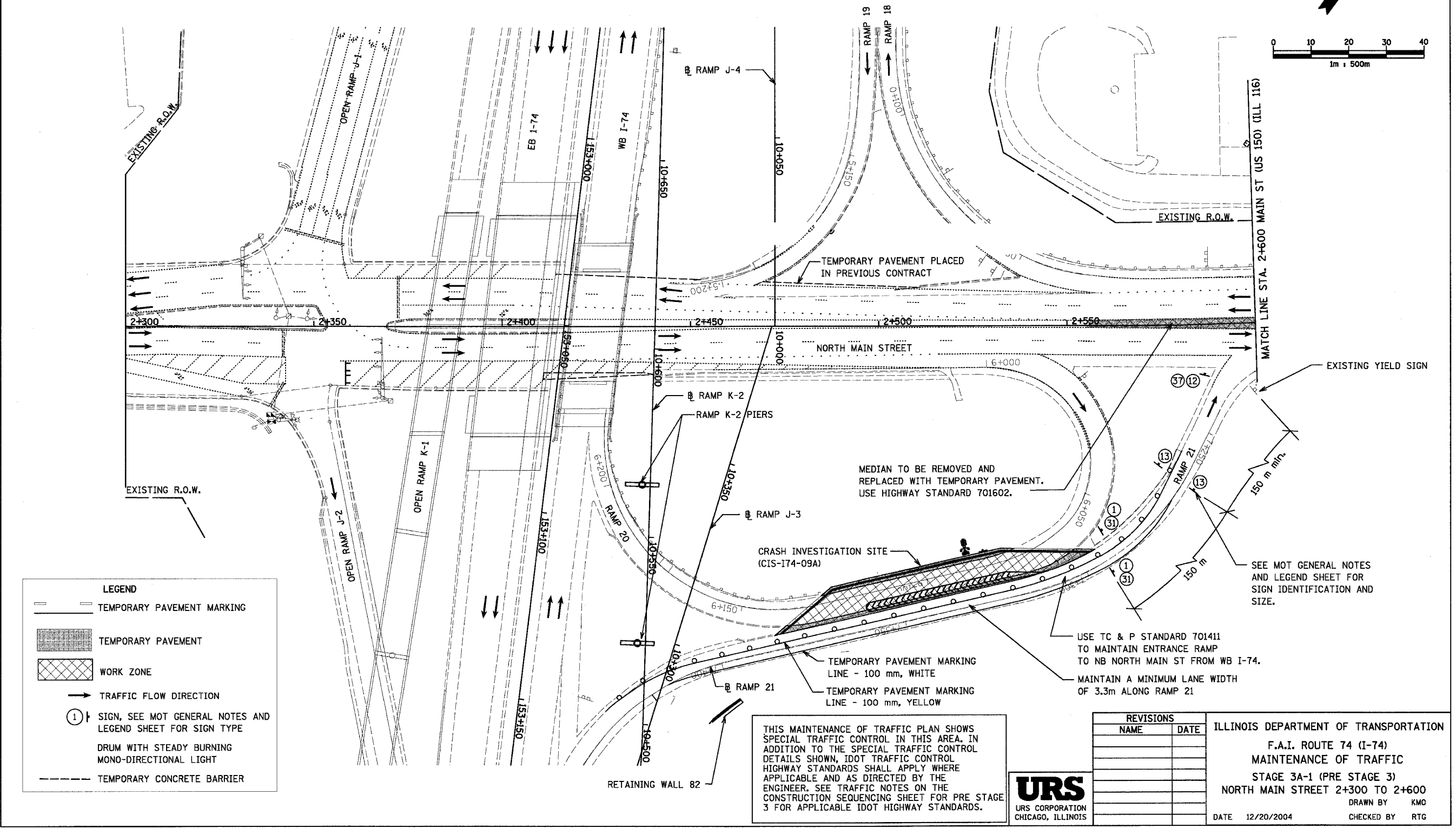
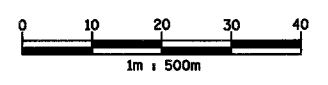
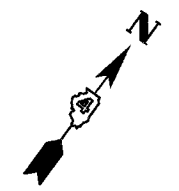


F.A.I. RTE.	SECTION	COUNTY	TOTAL SHEETS	SHEET NO.
74	(90-11R-2) 90(13,14,14-1R-1	TAZEWELL	1366	130
STA.	2+300	TO STA.	2+600	
FED. ROAD DIST. NO. 4 ILLINOIS FED. AID PROJECT				



LEGEND

- TEMPORARY PAVEMENT MARKING
- TEMPORARY PAVEMENT
- WORK ZONE
- TRAFFIC FLOW DIRECTION
- SIGN, SEE MOT GENERAL NOTES AND LEGEND SHEET FOR SIGN TYPE
- DRUM WITH STEADY BURNING MONO-DIRECTIONAL LIGHT
- TEMPORARY CONCRETE BARRIER

THIS MAINTENANCE OF TRAFFIC PLAN SHOWS SPECIAL TRAFFIC CONTROL IN THIS AREA. IN ADDITION TO THE SPECIAL TRAFFIC CONTROL DETAILS SHOWN, IDOT TRAFFIC CONTROL HIGHWAY STANDARDS SHALL APPLY WHERE APPLICABLE AND AS DIRECTED BY THE ENGINEER. SEE TRAFFIC NOTES ON THE CONSTRUCTION SEQUENCING SHEET FOR PRE STAGE 3 FOR APPLICABLE IDOT HIGHWAY STANDARDS.



REVISIONS	
NAME	DATE

ILLINOIS DEPARTMENT OF TRANSPORTATION
 F.A.I. ROUTE 74 (I-74)
 MAINTENANCE OF TRAFFIC
 STAGE 3A-1 (PRE STAGE 3)
 NORTH MAIN STREET 2+300 TO 2+600
 DRAWN BY KMO
 CHECKED BY RTG
 DATE 12/20/2004