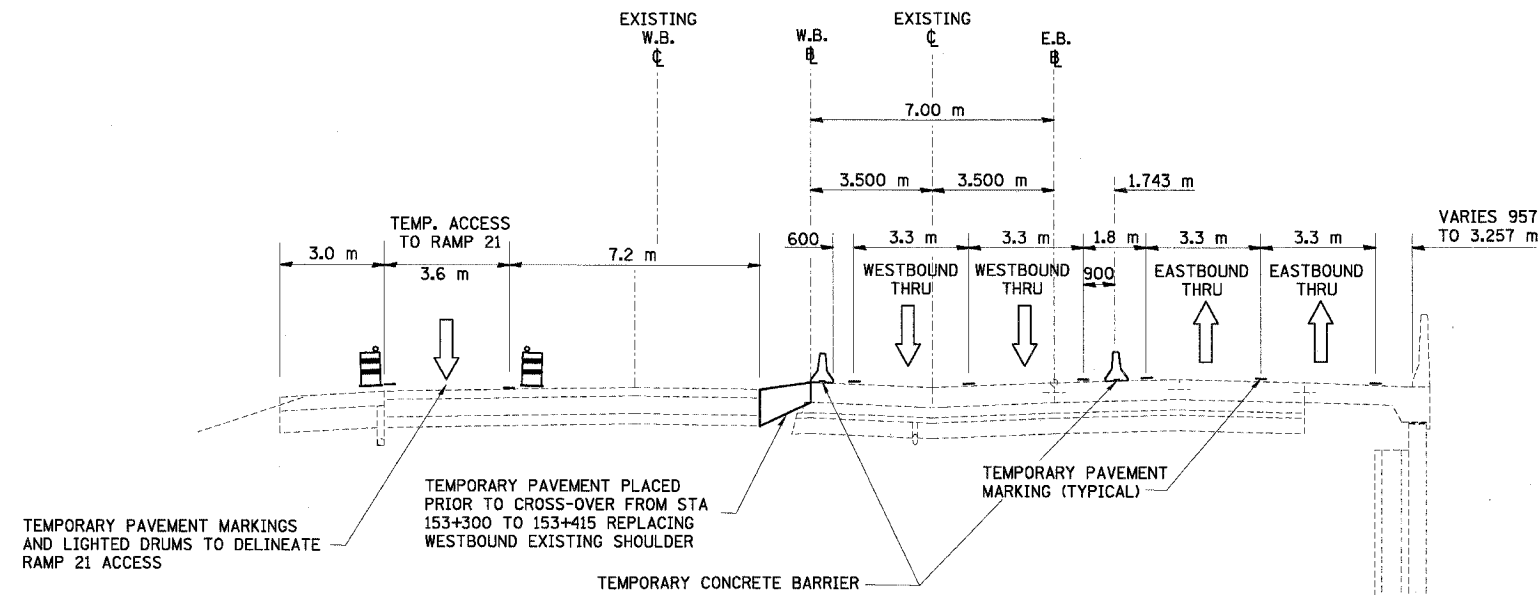


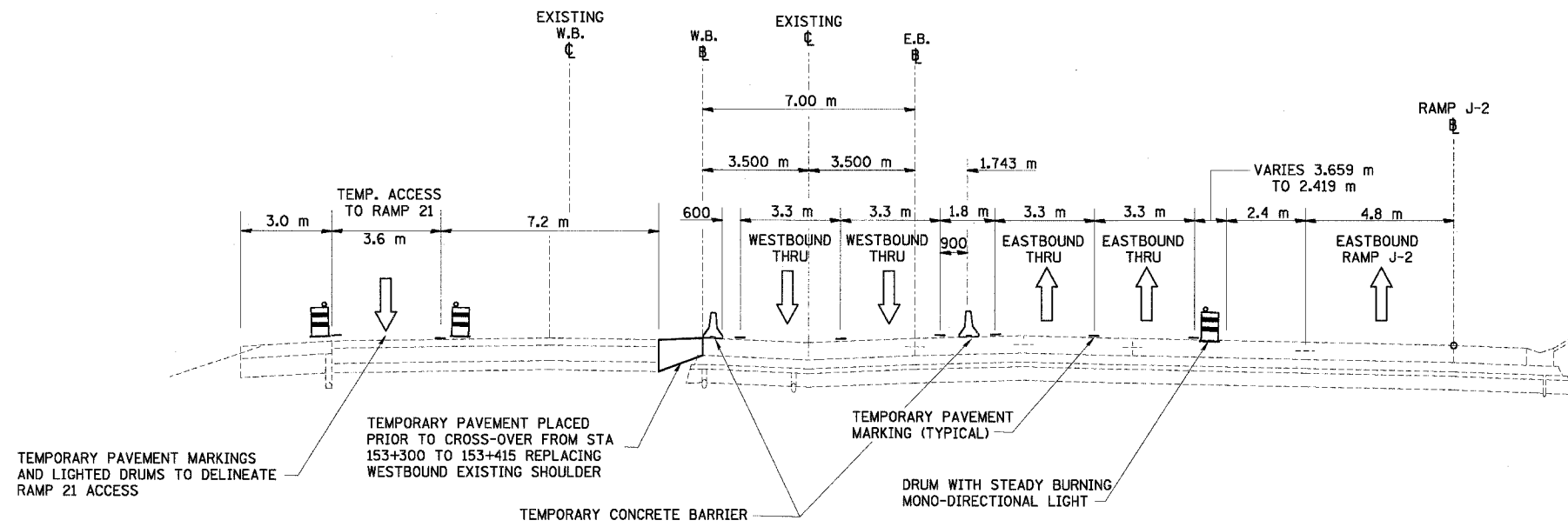
F.A.I. RTE.	SECTION	COUNTY	TOTAL SHEETS	SHEET NO.
74	(90-11)R-2 90(13,14,14-1)R-1	TAZEWELL	1366	142
STA.	TO STA.			
FED. ROAD DIST. NO. 4	ILLINOIS FED. AID PROJECT			



I-74 MOT TYPICAL SECTION NO. 11

11

STA. 153+202.863 TO STA. 153+294.550
WESTBOUND I-74 GAPPED BETWEEN STATION 153+168 TO 153+470



I-74 MOT TYPICAL SECTION NO. 12

12

STA. 153+294.550 TO STA. 153+356.574
WESTBOUND I-74 GAPPED BETWEEN STATION 153+168 TO 153+470

REVISIONS	
NAME	DATE

ILLINOIS DEPARTMENT OF TRANSPORTATION
F.A.I. ROUTE 74 (I-74)
MAINTENANCE OF TRAFFIC
STAGE 3A
I-74 TYPICAL SECTIONS 11 & 12
DRAWN BY KMO
CHECKED BY RTG
DATE 12/20/2004

