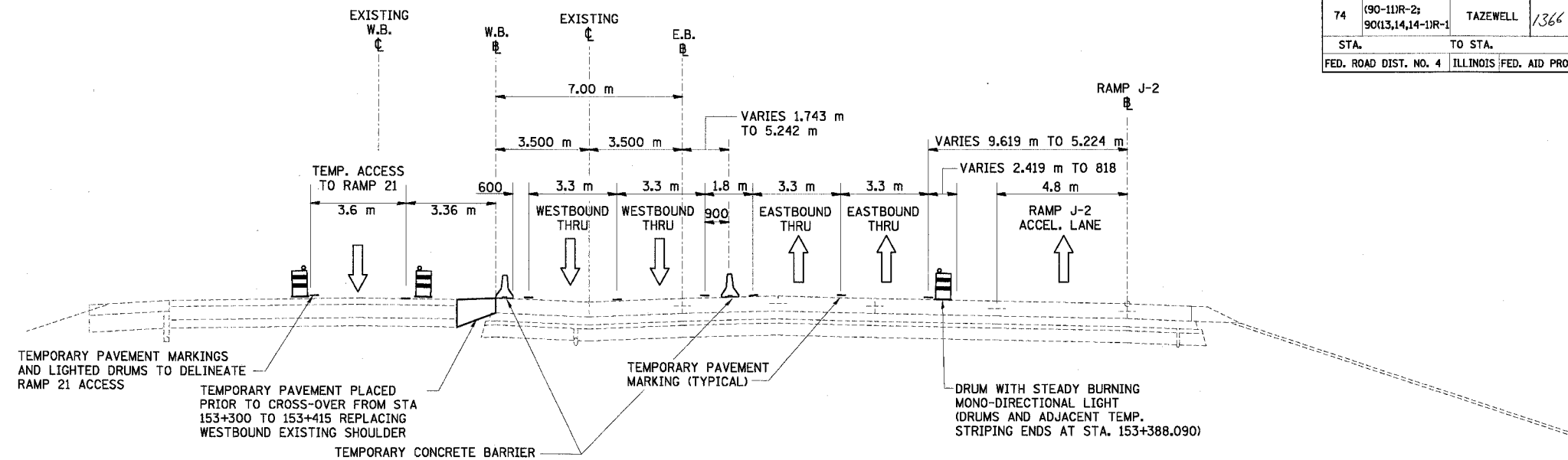
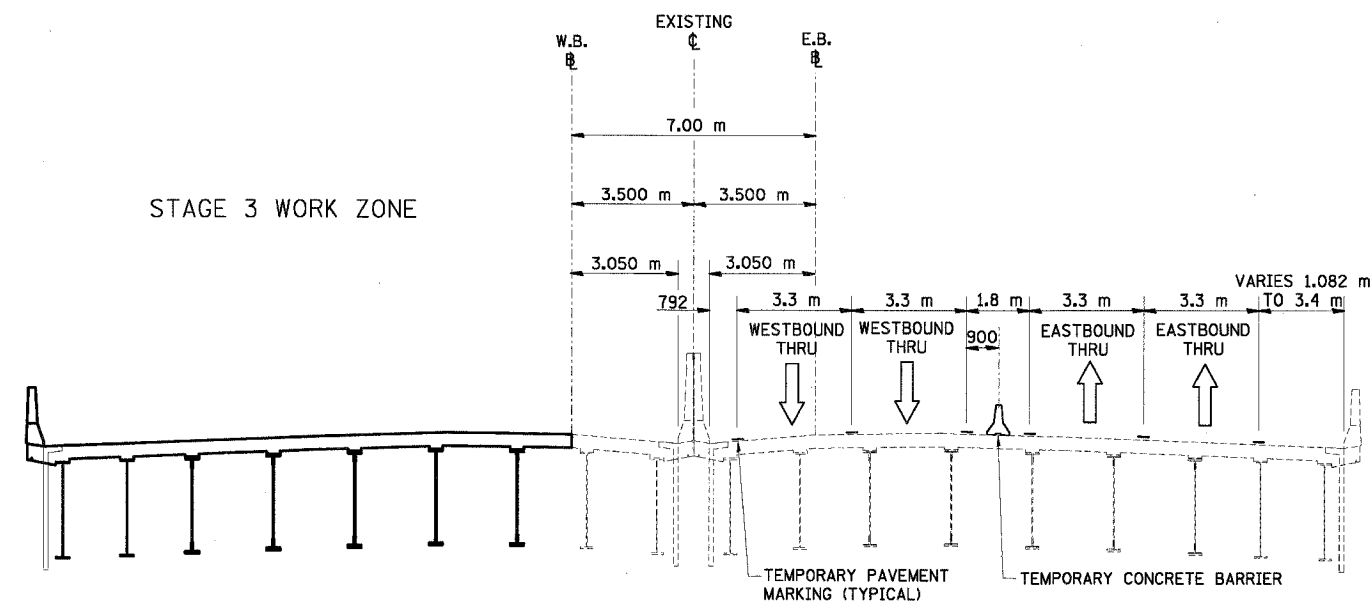


68201			
F.A.I. RTE.	SECTION	COUNTY	TOTAL SHEETS NO.
74	(90-11R-2) 90(13,14,14-1R-1	TAZEWELL	1366 143
STA.		TO STA.	
FED. ROAD DIST. NO. 4		ILLINOIS FED. AID PROJECT	



I-74 MOT TYPICAL SECTION NO. 13
STA. 153+356.574 TO STA. 153+479.130

13



I-74 MOT TYPICAL SECTION NO. 14
STA. 153+479.130 TO STA. 153+750.460

14

I-74 OVER CAMP ST (US 150), FARM CREEK AND TP&W R.R.

REVISIONS		ILLINOIS DEPARTMENT OF TRANSPORTATION F.A.I. ROUTE 74 (I-74) MAINTENANCE OF TRAFFIC STAGE 3A I-74 TYPICAL SECTIONS 13 & 14
NAME	DATE	
		DRAWN BY KMO CHECKED BY RTG DATE 12/20/2004

